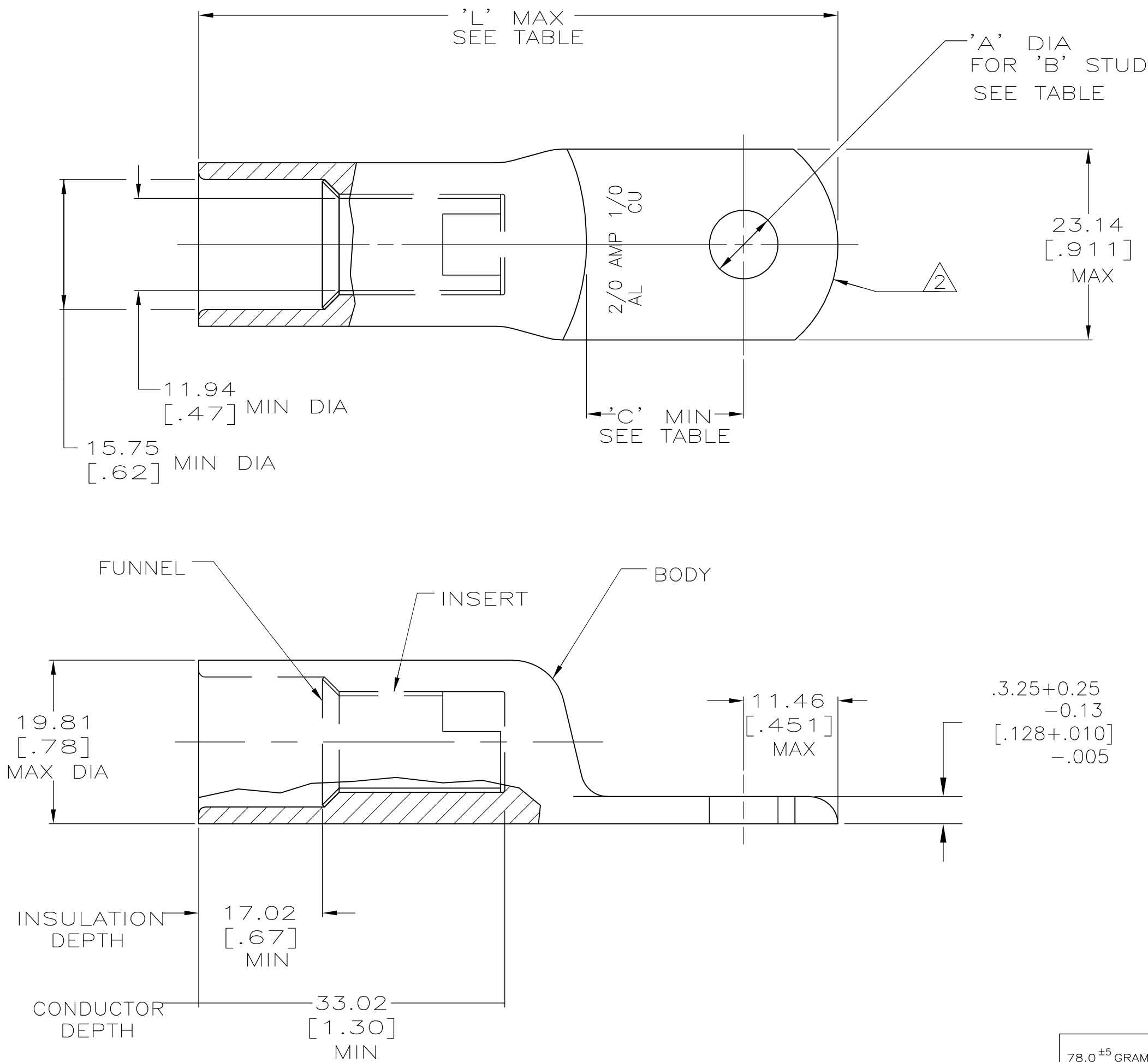


- 1
- WIRE INSULATION: 12.70[.500] — 13.97[.550] DIA
- 2
- THE TONGUE RADIUS FEATURE IS NOT A TOOLING CONTROLLED DIMENSION AND MAY NOT BE A TRUE RADIUS.



|                          |   |      |              |             |  |          |
|--------------------------|---|------|--------------|-------------|--|----------|
| 78.0 <sup>±5</sup> GRAMS | 13.08 <sup>±0.13</sup> [.515 <sup>±.005</sup> ] | 1/2  | 77.47 [3.05] | 18.03 [.71] | BODY: COPPER ASTM-B187 ANNEALED<br>TIN PL PER MIL-T-10727<br>0.00381[.000150] MIN THK                            | 277152-5 |
| 81 <sup>±5</sup> GRAMS   | 9.91 <sup>±0.13</sup> [.390 <sup>±.005</sup> ]  | 3/8  |              |             |  | 277152-4 |
| 80 <sup>±5</sup> GRAMS   | 8.33 <sup>±0.13</sup> [.328 <sup>±.005</sup> ]  | 5/16 | 71.37 [2.81] | 11.94 [.47] | INSERT & FUNNEL: BRASS ASTM B36<br>NICKEL PL SAE AMS QQ-N-290A,<br>DATED JULY 2000,<br>0.00254 [.000100] MIN THK | 277152-3 |
| 76.3 <sup>±5</sup> GRAMS | 9.91 <sup>±0.13</sup> [.390 <sup>±.005</sup> ]  | 3/8  |              |             |  | 277152-2 |
| -                        | 6.73 <sup>±0.13</sup> [.265 <sup>±.005</sup> ]  | 1/4  |              |             |  | 277152-1 |
| WEIGHT                   | 'A'   | 'B'  | 'L'          | 'C'         | MATERIAL & FINISH  | PART NO. |

|  |  |  |                                |  |                 |            |
|--|--|--|--------------------------------|--|-----------------|------------|
| THIS DRAWING IS A CONTROLLED DOCUMENT. |  |  | DWN<br>DK SCHRUM<br>6/23/89    | TE Connectivity  |                 |            |
| DIMENSIONS:<br>MM [ INCHES]            |  |  | CHK<br>MS FEHER<br>10/16/90    |  |                 |            |
|  |  |  | APVD<br>AJ KAUFMAN<br>10/20/90 | NAME   |                 |            |
|  |  |  | PRODUCT SPEC<br>108-11011      | WIRE TERMINAL, RING TONGUE, SEALED COPALUM<br>71.3mm2 [2/0] ALUMINUM<br>53.9mm2 [1/0] COPPER |                 |            |
|  |  |  | APPLICATION SPEC<br>114-2134   | SIZE   | CAGE CODE       | DRAWING NO |
| MATERIAL<br>SEE TABLE                  |  |  | WEIGHT<br>SEE TABLE            | A2   | 00779           | C=277152   |
| FINISH<br>SEE TABLE                    |  |  | CUSTOMER DRAWING               | SCALE<br>2:1   | SHEET<br>1 of 1 | REV<br>L   |

# Mouser Electronics

Authorized Distributor

Click to View Pricing, Inventory, Delivery & Lifecycle Information:

[TE Connectivity:](#)

[277152-1](#)