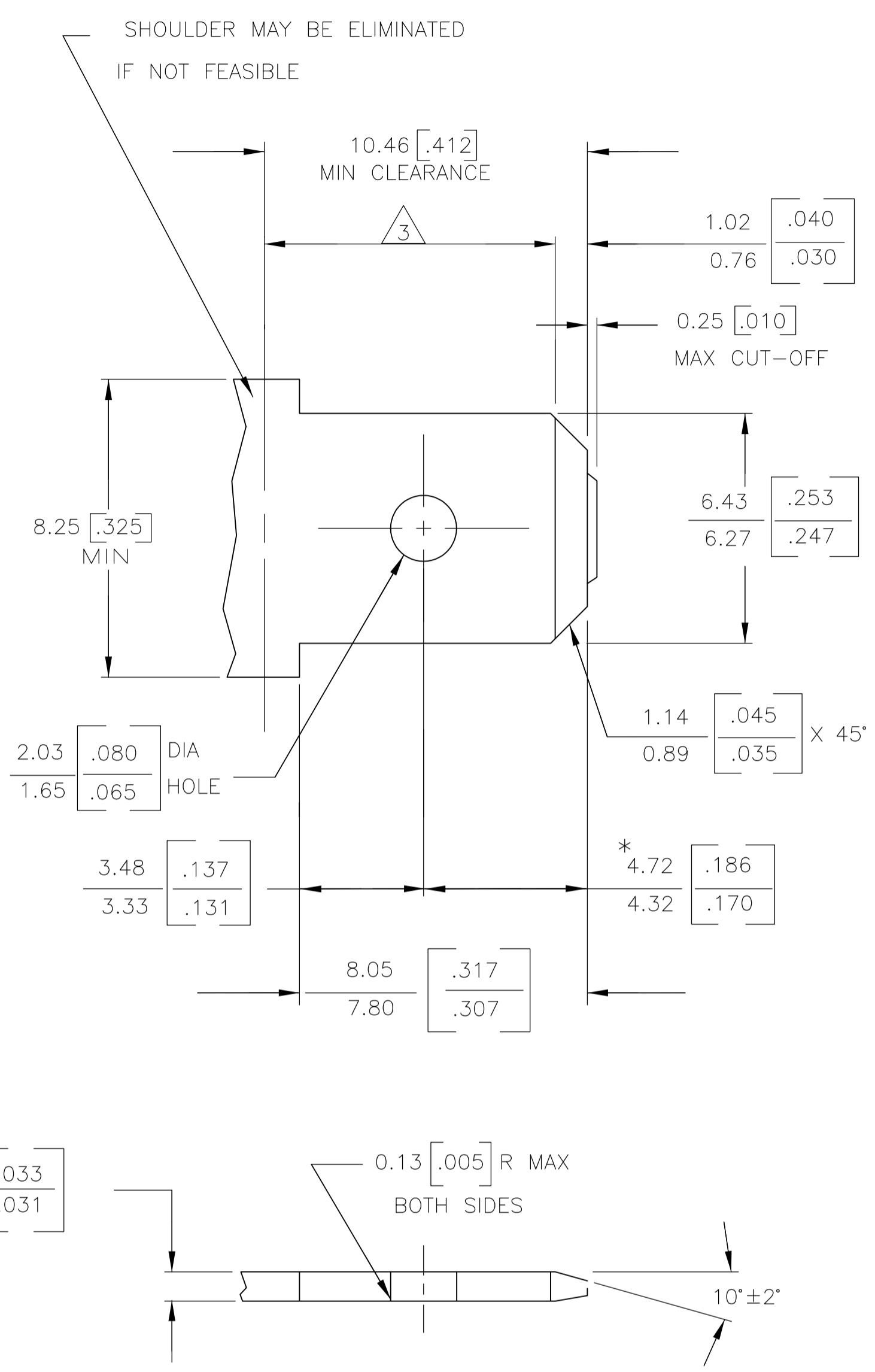
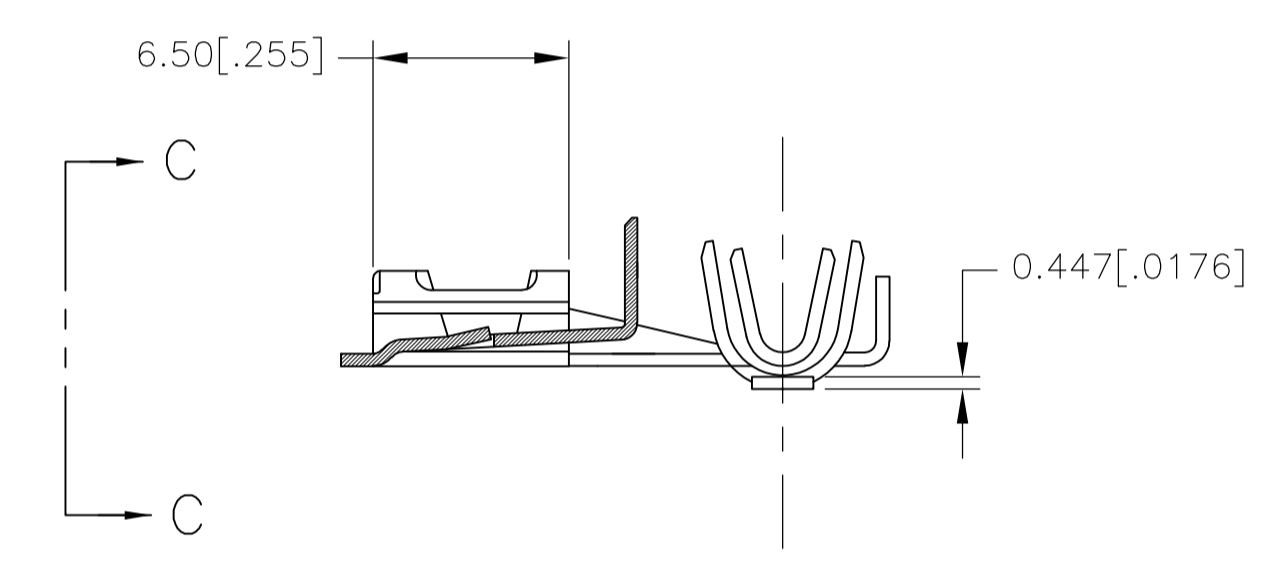
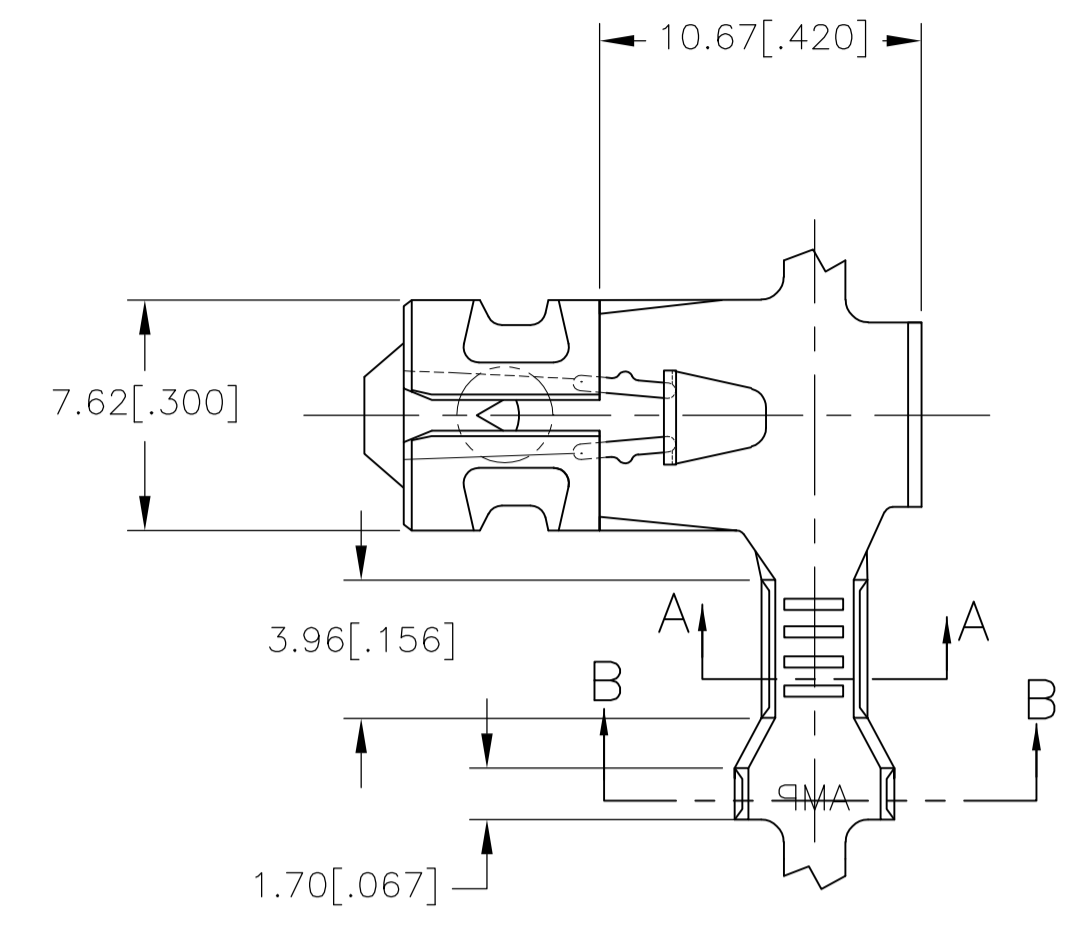


REVISIONS					
REV	DATE	DESCRIPTION	BY	CHK	APPV
A1	27JUL2017	REVISED PER ECO-17-010992	RS	MD	

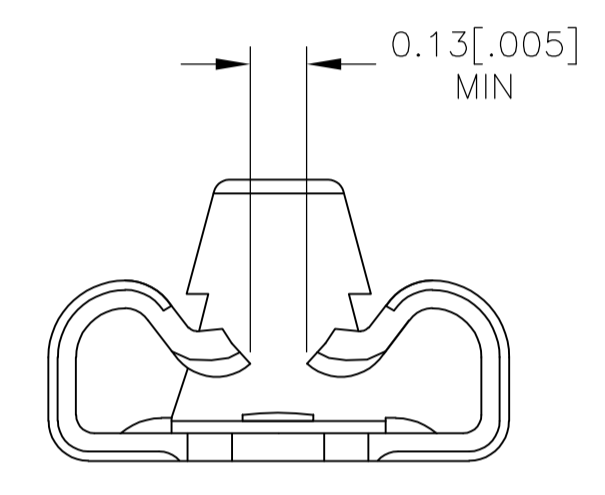
SUGGESTED MATING TAB



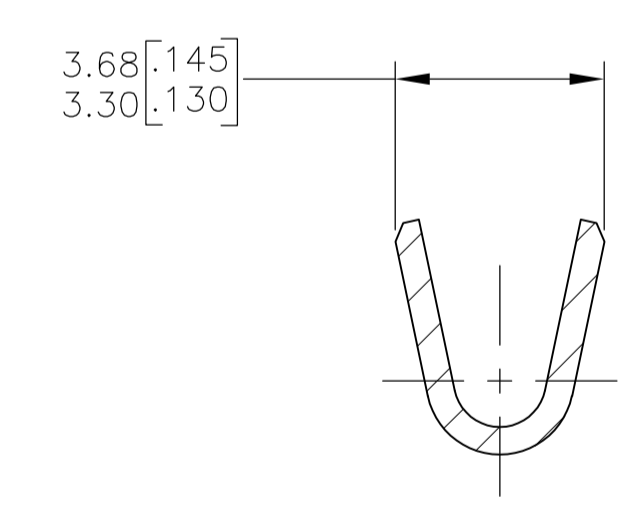
- MATL: 1/2 H BRASS OR NICKEL PL STEEL.
 - NO BURRS PERMISSIBLE AT HOLE.
 - MUST BE FLAT WITHIN 0.076 [.003] OVER THIS LENGTH.
 - TIN PLATING IS REQUIRED ON BRASS WHEN TERMINAL TEMP. IS OVER 225°F
 - HOLE MUST BE SYMMETRICAL ABOUT TAB Q WITHIN 0.076 [.003]
- * TO BE USED ONLY WHEN SHOULDER IS ELIMINATED.



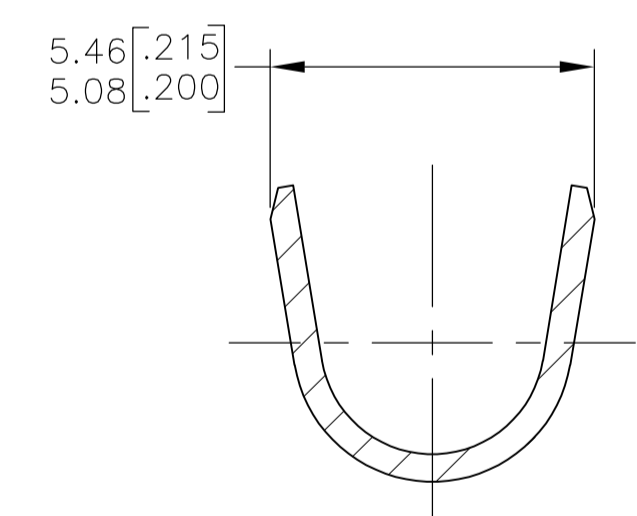
- DIMENSIONS IN BRACKETS ARE IN INCHES.
- PRODUCT PROVIDED IN STRIP FORM, BREAKS MAY BE PRESENT.
- THIS PART HAS NOT COMPLETED QUALIFICATION TESTING



VIEW C-C
SCALE 8:1



SECTION A-A
SCALE 8:1



SECTION B-B
SCALE 8:1

2.29-3.94 [.090-.155] DIA	#16-#14 AWG	2238105-1
INSULATION RANGE	WIRE SIZE	PART NUMBER

THIS DRAWING IS A CONTROLLED DOCUMENT.		DIN: BASVESH WARAD 04MAY2016		STE TE Connectivity	
DIMENSIONS: mm [INCHES]		CHK: MIKE DIDONATO 04MAY2016		NAME: RECEPTACLE, FLAG, POSITIVE-LOCK, .250 SERIES	
TOLERANCES UNLESS OTHERWISE SPECIFIED:		APVD: MIKE DIDONATO 04MAY2016		PRODUCT SPEC: -	
0 PLC ± -		APPLICATION SPEC: -		SIZE: -	
1 PLC ± -		WEIGHT: 0		CAGE CODE: A1	
2 PLC ± -		CUSTOMER DRAWING		DRAWING NO: 00779	
3 PLC ± 0.25 [.010]		SCALE: 4:1		SHEET 1 OF 1	
4 PLC ± -		REV: A1		REV: A1	
ANGLES ± -					
FINISH: -					

Mouser Electronics

Authorized Distributor

Click to View Pricing, Inventory, Delivery & Lifecycle Information:

[TE Connectivity:](#)

[2238105-1](#)