
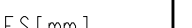
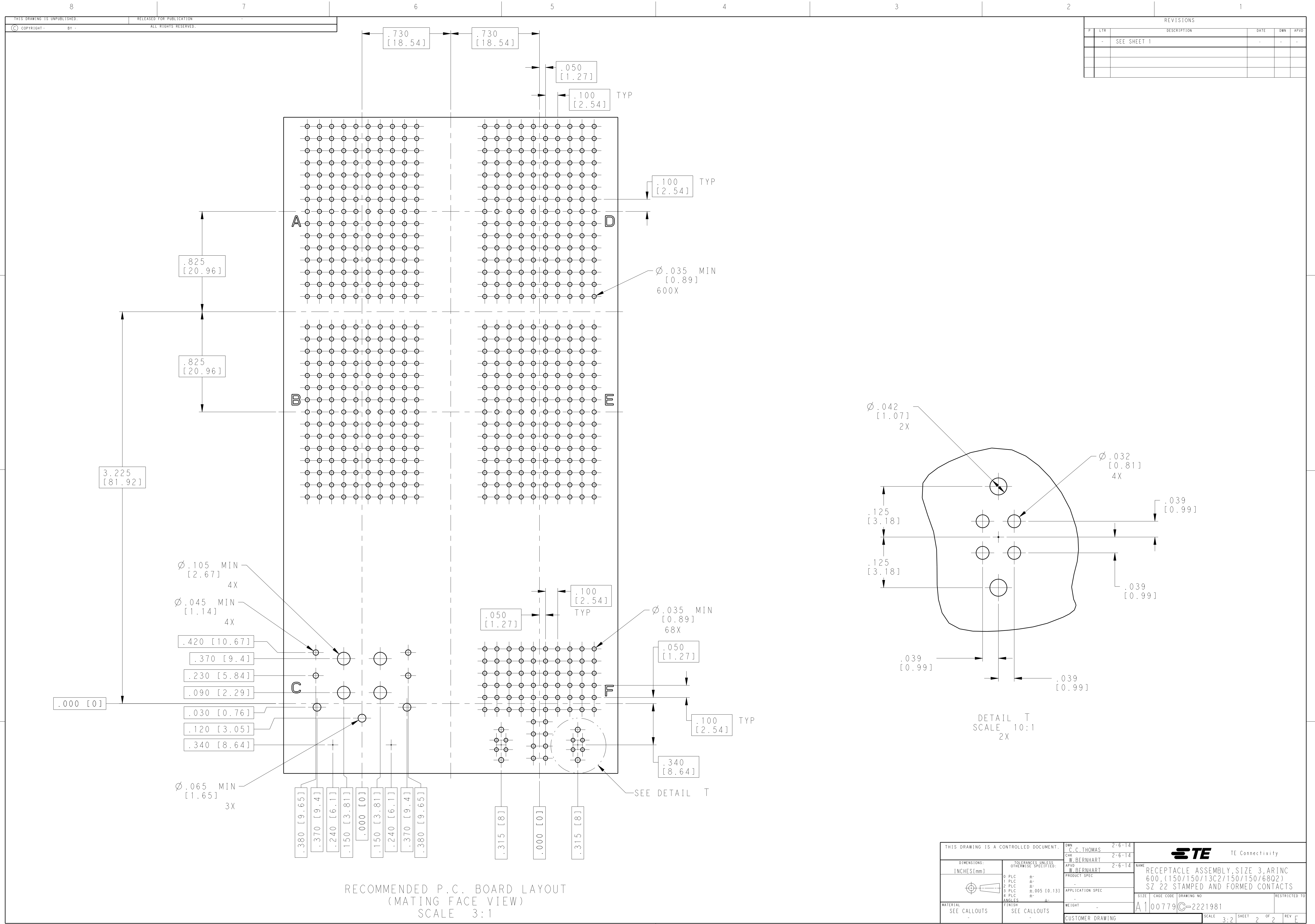


SIZE 22 SOCKET CONTACT QTY = 600	BODY: COPPER ALLOY HOOD: STAINLESS STEEL	BODY: .000050 MIN GOLD ON MATING TINES, SnPb ON TAIL, BOTH OVER NICKEL PLATE HOOD: PASSIVATED	SEE CALLOUT
150 POSITION INSERT 4 PLC	THERMOPLASTIC	NONE	SEE CALLOUT
13C2 INSERT	THERMOSET	NONE	ALL FRONT RELEASE/REMOVE
68Q2 POSITION INSERT	THERMOPLASTIC	NONE	--
#6-32 CLINCH NUT QTY = 10	STAINLESS STEEL	CADMIUM PLATED WITH SUPP YELLOW CHROMATE	PART SHALL MEET THE REQUIREMENTS OF NASM45938/7-4
SHELL RETENTION PLATES	ALUMINUM ALLOY PER ASTM-B-85 OR ASTN B211 6061-T6 OR ASTM B209 2024-T4.	ELECTROLESS NICKEL PER MIL-C-26074	--
COMPONENT	MATERIAL	FINISH	REMARKS

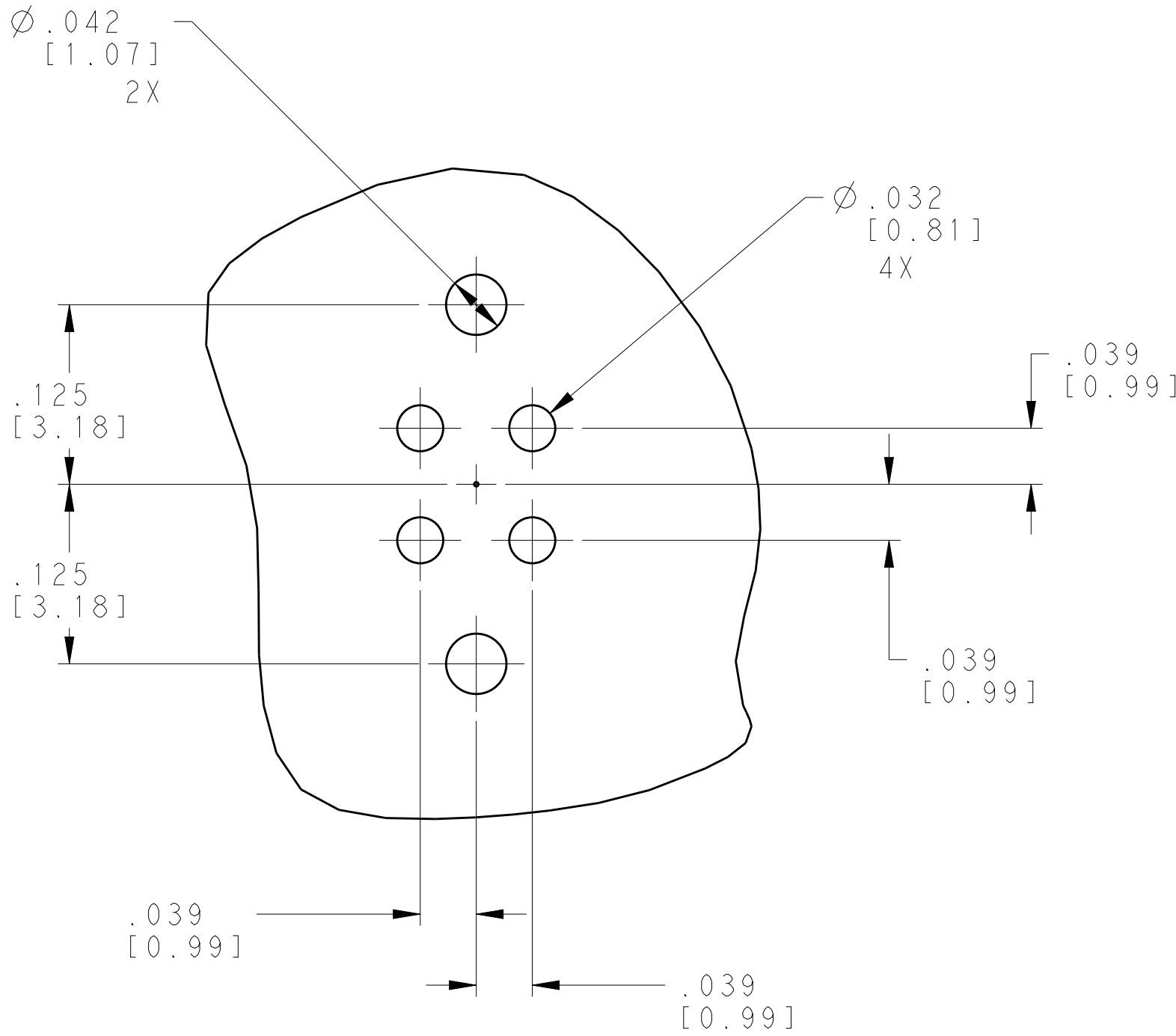
- RECEPTACLE IS INTERMATEABLE TO ARINC 600 STYLE SIZE 3 PLUG ASSEMBLY
- ASSEMBLED CONNECTOR FEATURES COMPLY WITH ARINC 600 SPECIFICATION EXCEPT AS NOTED.
- "98571-2245040-1 REV -"  
2221981-1 00779  
DATE CODE  
MARED IN AREA SHOWN WITH .12 MIN HIGH CHARACTERS.
- KEYING INSTALLED IN POSITION "01".
- TE LOGO APPEARS IN THIS APPROXIMATE LOCATION ON MACHINED FROM BILLET SHELLS.
- ASSEMBLY SHOWN WITH DIE CAST SHELL. ASSEMBLIES WITH MACHINED SHELLS MAY VARY SLIGHTLY IN APPEARANCE

"01"	2221981-2
"01"	2221981-1
KEYING POSITION	PART NO.

THIS DRAWING IS A CONTROLLED DOCUMENT.		DWN C.C. THOMAS 2-6-14	 TE Connectivity		
DIMENSIONS: [INCHES][mm]		CHK W. BERNHART 2-6-14			
		TOLERANCES UNLESS OTHERWISE SPECIFIED:		NAME RECEPTACLE ASSEMBLY, SIZE 3, ARINC 600, (150/150/13C2/150/150/68Q2) SZ 22 STAMPED AND FORMED CONTACTS	
		0 PLC ± 1 PLC ± 2 PLC ± 3 PLC ±.005 (0.13) 4 PLC ± ANGLES ± FINISH			
MATERIAL SEE CALLOUTS		WEIGHT		SIZE A1	
		CUSTOMER DRAWING		SCALE 3:2 SHEET 1 OF 2 REV E	


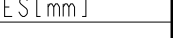


REVISIONS					
P.	LTR.	DESCRIPTION	DATE	DWN.	APVD.
-	-	SEE SHEET 1	-	-	-



DETAIL T  
SCALE 10:1  
2X

RECOMMENDED P.C. BOARD LAYOUT  
(MATING FACE VIEW)  
SCALE 3:1

THIS DRAWING IS A CONTROLLED DOCUMENT.		DWN. C.C. THOMAS 2-6-14	 TE Connectivity	
DIMENSIONS: INCHES[mm]		CHK. W. BERNHART 2-6-14		
	TOLERANCES UNLESS OTHERWISE SPECIFIED:		NAME	
	0.1 P/LC ±		RECEPTACLE ASSEMBLY, SIZE 3, ARINC	
	0.2 P/LC ±		600, (150/150/13C2/150/150/68Q2)	
	0.005 (0.13) ±		SZ 22 STAMPED AND FORMED CONTACTS	
0.4 P/LC ±		APPLICATION SPEC		
0.1 P/LC ±		FINISH		
MATERIAL SEE CALLOUTS	SEE CALLOUTS	WEIGHT	SIZE A1	CAGE CODE 00779
CUSTOMER DRAWING		SCALE 3:2	SHEET 2 OF 2	REV E

# Mouser Electronics

Authorized Distributor

Click to View Pricing, Inventory, Delivery & Lifecycle Information:

[TE Connectivity:](#)

[2221981-1](#)