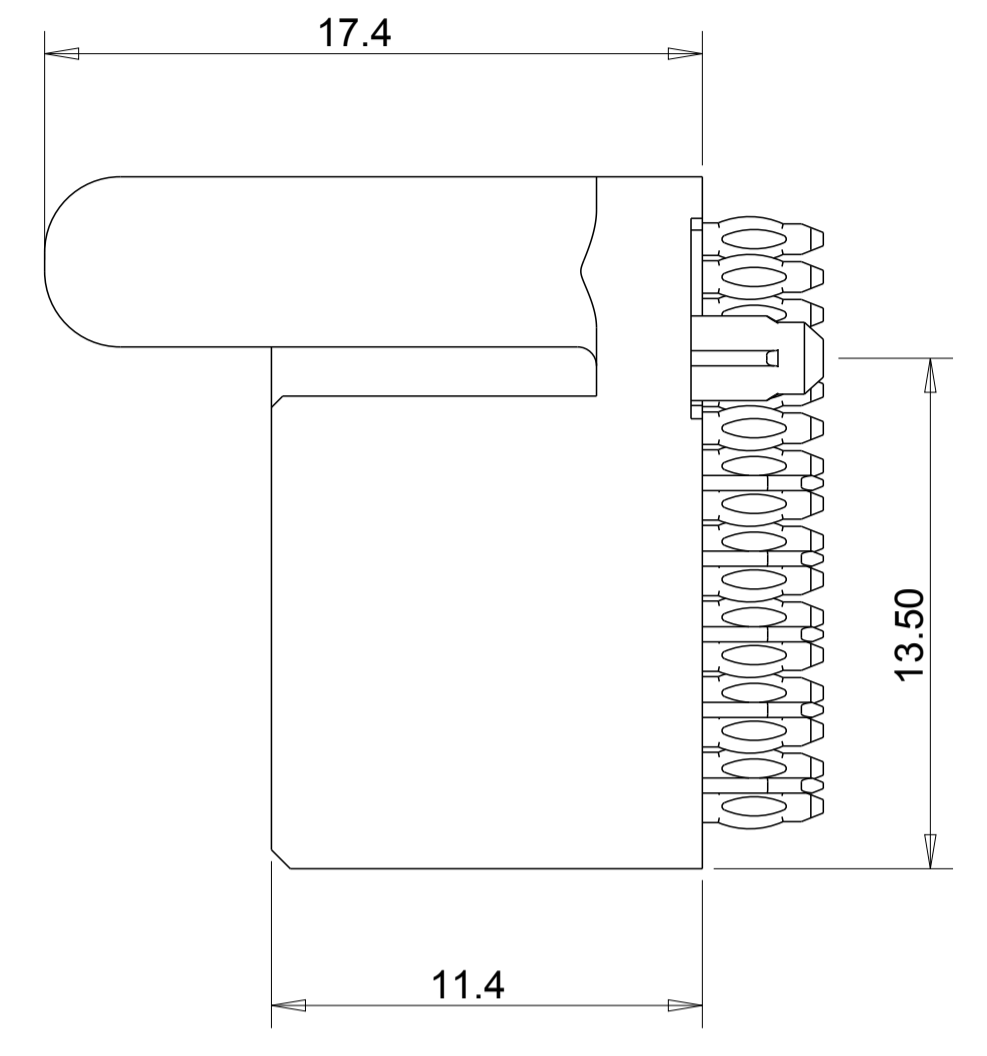
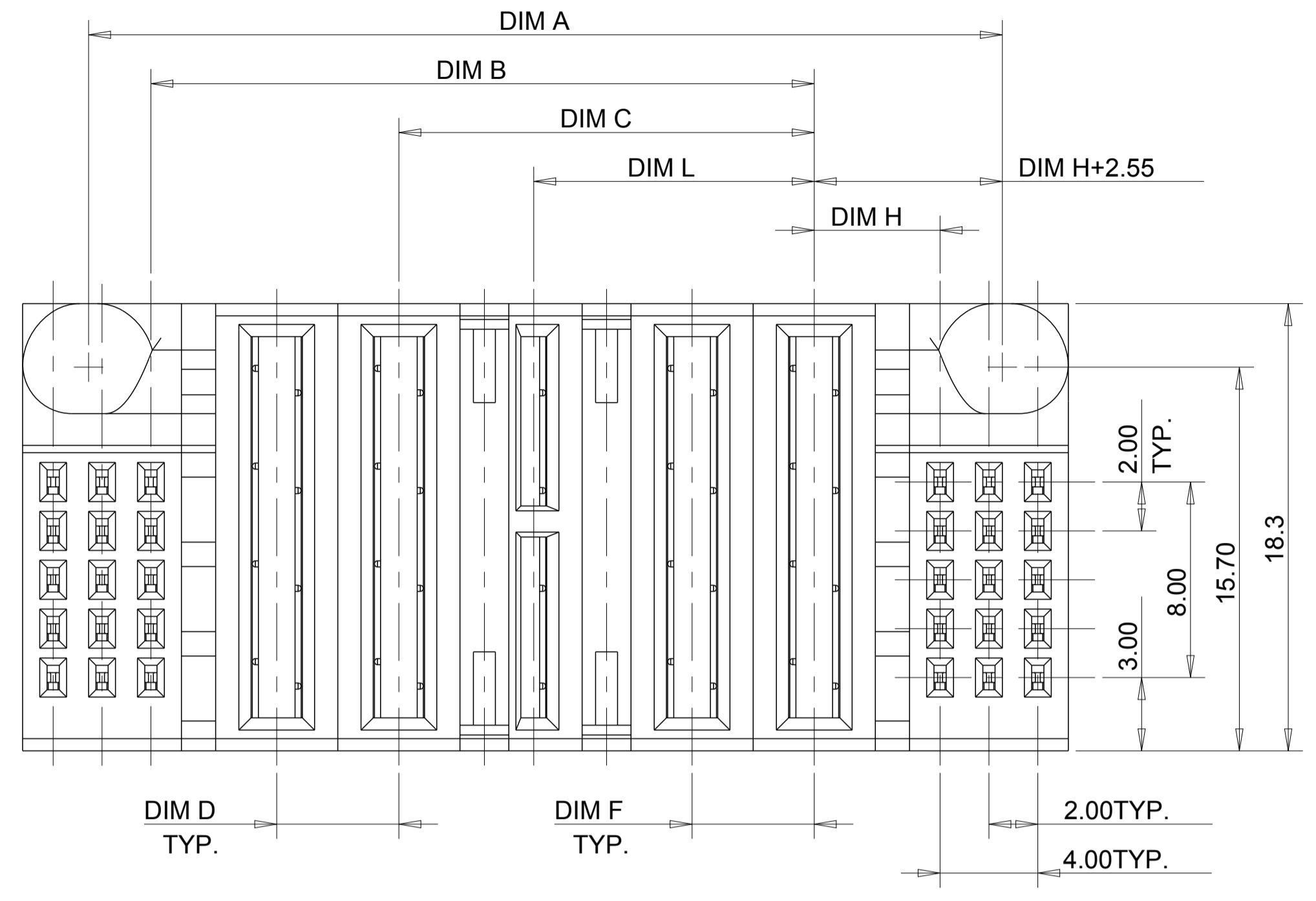
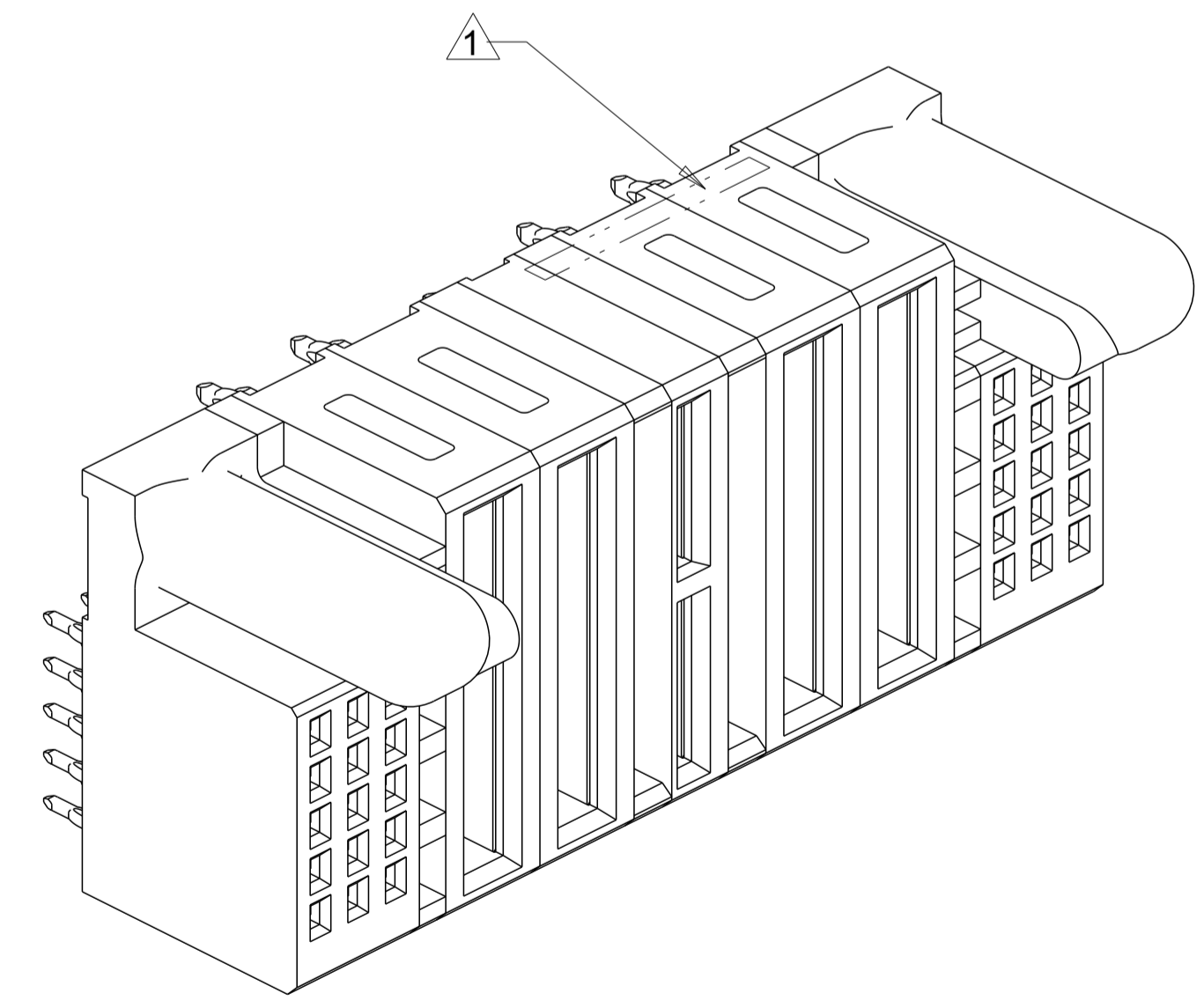
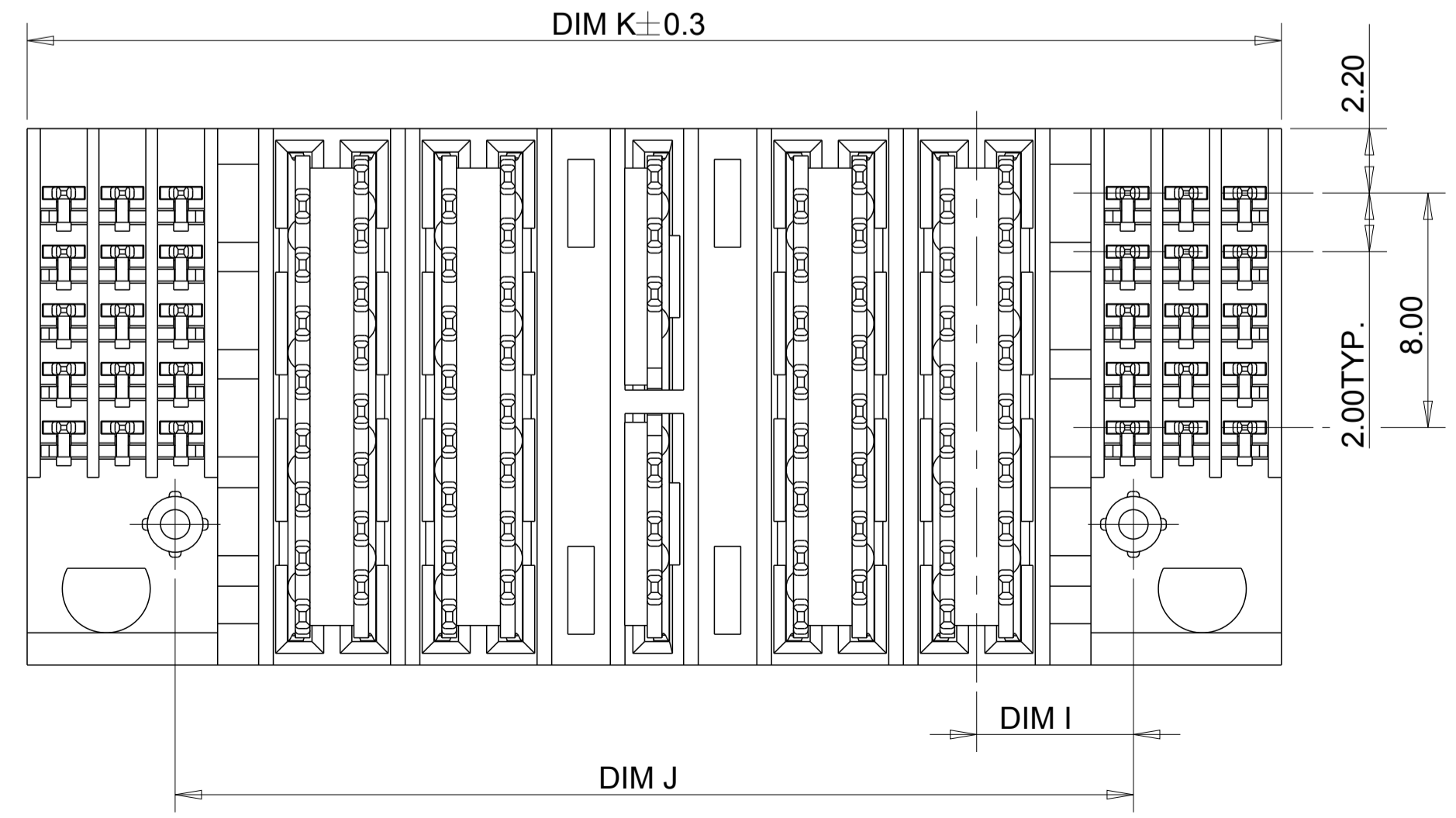
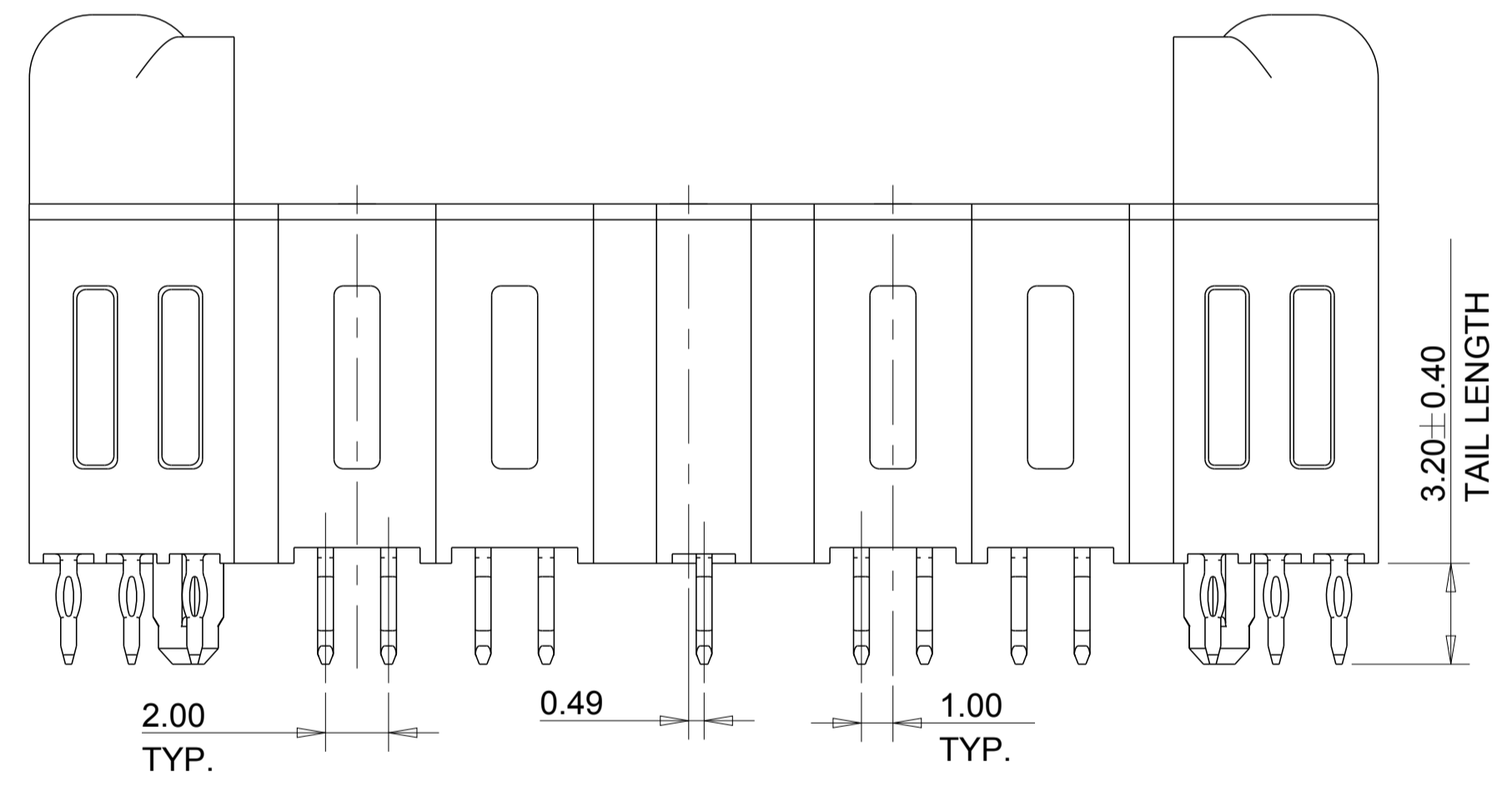


| LOC |     | DIST             |           | REVISIONS |      |  |  |
|-----|-----|------------------|-----------|-----------|------|--|--|
| P   | LTR | DESCRIPTION      | DATE      | DWN       | APVD |  |  |
| A   |     | RELEASED DRAWING | 10AUG2016 | TZ        | SZ   |  |  |

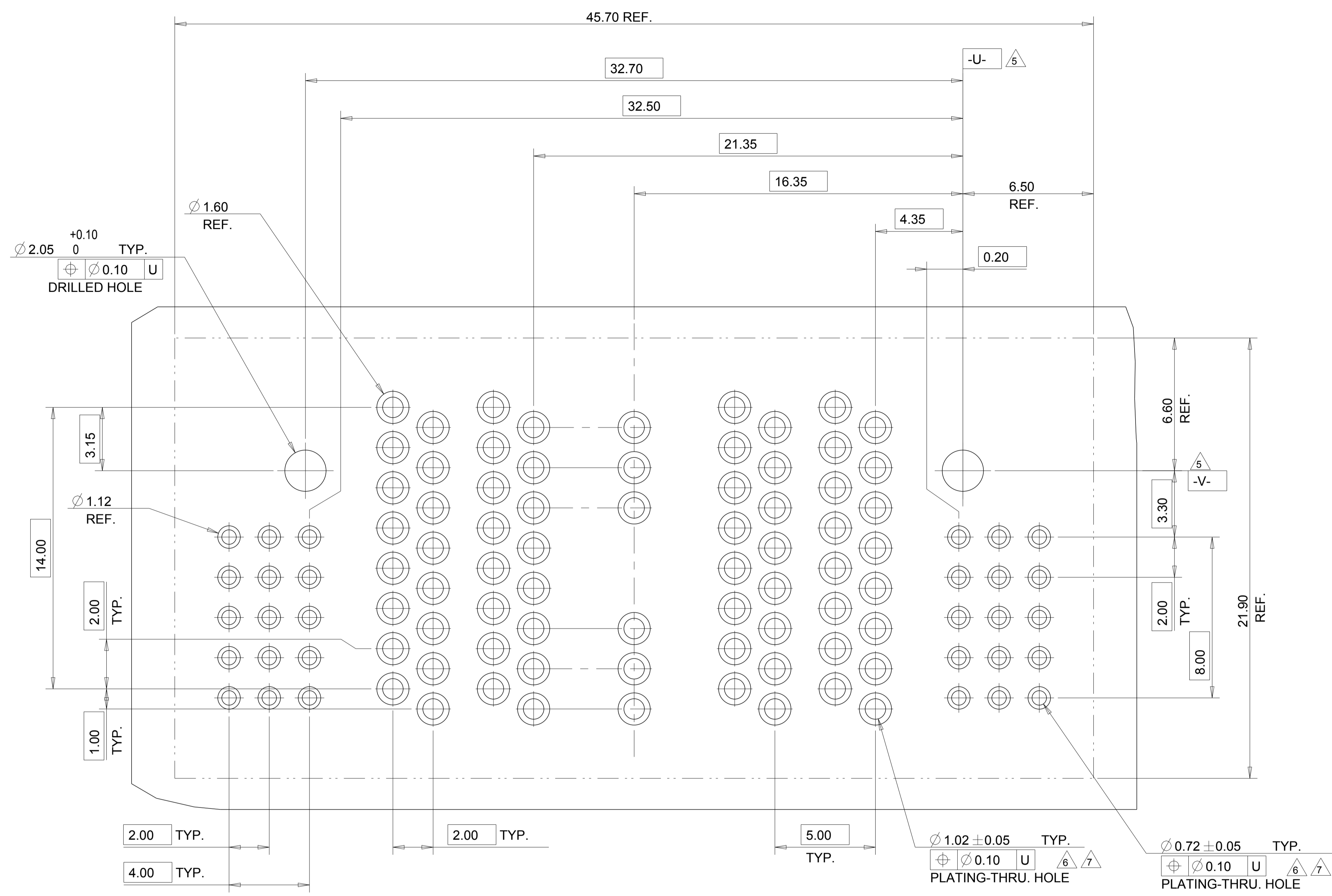


- NOTES, UNLESS OTHERWISE SPECIFIED:
1. "TE" PART NUMBER AND DATE CODE TO BE MARKED IN AREA SHOWN.
  2. MATERIAL:
    - HOUSING - GLASS FILLED HIGH TEMP THERMO PLASTIC, COLOR: BLACK, UL94 V-0.
    - SIGNAL CONTACT - HIGH CONDUCTIVITY COPPER ALLOY.
    - POWER CONTACT - HIGH CONDUCTIVITY COPPER ALLOY.
  3. CONTACT PLATING:
    - MATING AREA - NOBLE METAL OVERALL NICKEL
    - TAIL SIDE AREA - MATTE TIN OVERALL NICKEL.
  4. MECHANICAL CONNECTOR KEEP OUT ZONE.
  5. DATUM AND BASIC DIMENSIONS ESTABLISHED BY CUSTOMER.
  6. PCB - ALL HOLE DIAMETERS ARE FINISHED HOLE SIZES.
  7. PCB HOLE:
    - POWER -  $1.15 \pm 0.025$  MM DRILLED HOLES SIZE PLATING WITH 0.0076 MM MIN. Sn OVER 0.025-0.076 MM Cu PLATING TO ACHIEVE A 1.02 MM DIA. HOLE.
    - SIGNAL -  $0.835 \pm 0.025$  MM DRILLED HOLES SIZE PLATING WITH 0.0076 MM MIN. Sn OVER 0.025-0.076 MM Cu PLATING TO ACHIEVE A 0.72 MM DIA. HOLE.



|  |  |                            |                               |
|--|--|----------------------------|-------------------------------|
| THIS DRAWING IS A CONTROLLED DOCUMENT. |  | DWN: THOMAS ZHAO 09JAN2013 |                               |
| DIMENSIONS: mm                         |  | CHK: SUNY ZHAO 09JAN2013   |                               |
| TOLERANCES UNLESS OTHERWISE SPECIFIED: |  | APVD: SUNY ZHAO 09JAN2013  | NAME: Customer Drawing        |
| 0 PLC ±                                |  | PRODUCT SPEC               | VERTICAL RECEPTACLE CONNECTOR |
| 1 PLC ±0.5                             |  | APPLICATION SPEC           | MULTI-BEAM HD S+P+LP+P+S      |
| 2 PLC ±0.25                            |  | SIZE: A1                   | RESTRICTED TO                 |
| 3 PLC ±0.15                            |  | CAGE CODE: -               | DRAWING NO: 2204421           |
| 4 PLC ±                                |  | WEIGHT: -                  | SCALE: 5:1                    |
| FINISH: ANGLE                          |  | CUSTOMER DRAWING           | SHEET 1 OF 3                  |
| MATERIAL: 2                            |  |                            | REV A                         |

| LOC |     | DIST        |      | REVISIONS |       |   |   |
|-----|-----|-------------|------|-----------|-------|---|---|
| P   | LTR | DESCRIPTION | DATE | DWN       | APP'D |   |   |
| -   | -   | SEE SHEET 1 | -    | -         | -     | - | - |



|                                  |            |
|----------------------------------|------------|
| TOP LP CONTACT MFBL PRESS FIT    | LM1        |
| BOTTOM LP CONTACT MFBL PRESS FIT | LM2        |
| SIGNAL CONTACT PRESS FIT         | SM1        |
| POWER CONTACT MFBL PRESS FIT     | PM         |
| DESCRIPTION                      | IDENTIFIER |

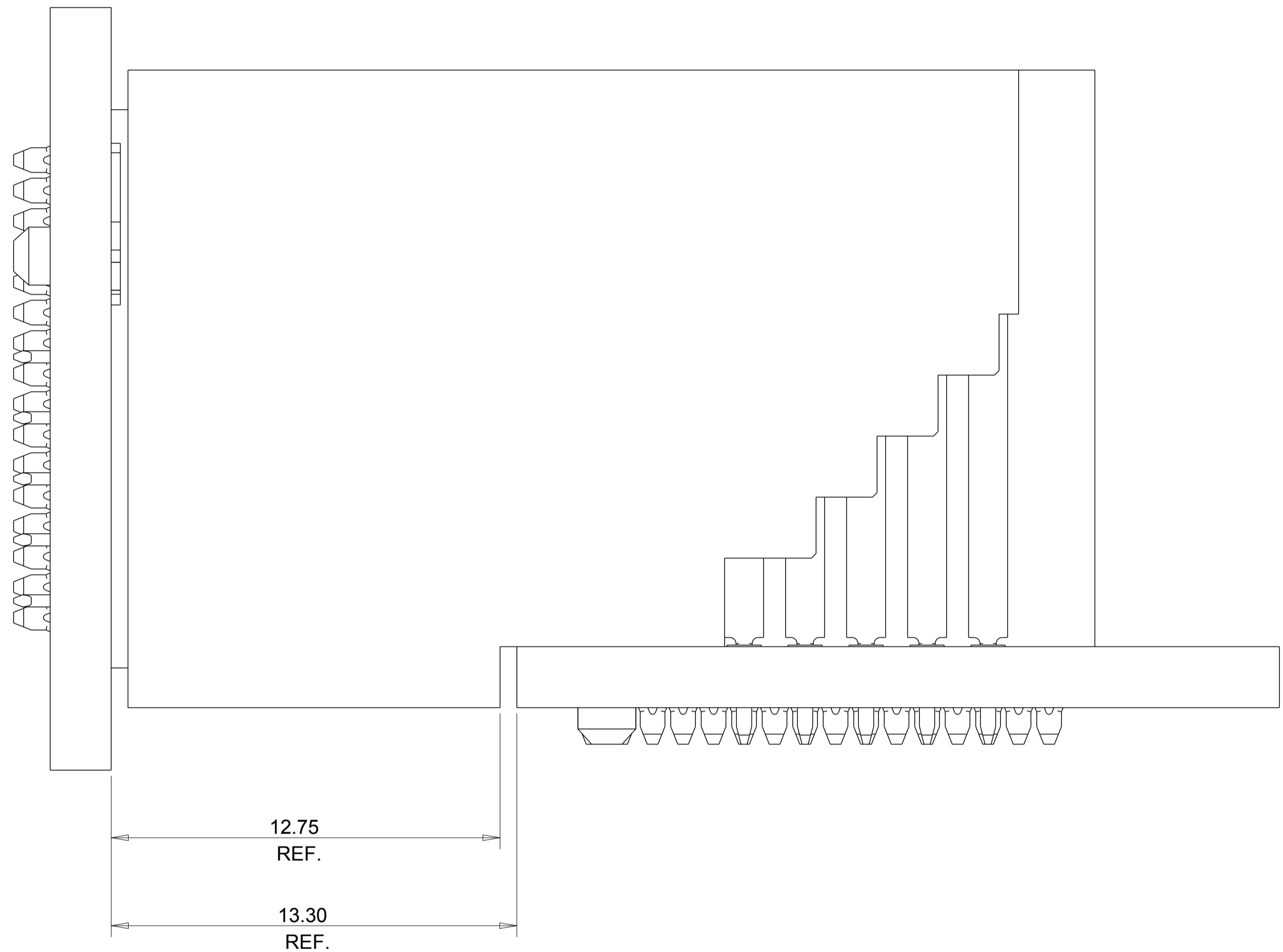
| PART NUMBER | ROWS | SIGNAL |    |    | POWER |    |     |    |    | SIGNAL |    |    |
|-------------|------|--------|----|----|-------|----|-----|----|----|--------|----|----|
|             |      | 6      | 5  | 4  | P4    | P3 | LP  | P2 | PI | 3      | 2  | 1  |
| 2204421-1   | E    | SM     | SM | SM | PM    | PM | LM1 | PM | PM | SM     | SM | SM |
|             | D    | SM     | SM | SM | PM    | PM |     | PM | PM | SM     | SM | SM |
|             | C    | SM     | SM | SM |       |    | LM2 |    |    | SM     | SM | SM |
|             | B    | SM     | SM | SM |       |    |     |    |    | SM     | SM | SM |
|             | A    | SM     | SM | SM |       |    |     |    |    | SM     | SM | SM |

| DIM A | DIM B | DIM C | DIM D | DIM F | DIM H | DIM I | DIM J | DIM K | DIM L | DESCRIPTION       | PART NUMBER |
|-------|-------|-------|-------|-------|-------|-------|-------|-------|-------|-------------------|-------------|
| 37.40 | 27.15 | 17.00 | 5.00  | 5.00  | 5.15  | 5.35  | 32.70 | 42.80 | 11.48 | 15S+2P+2LP+2P+15S | 2204421-1   |

|  |  |                           |  |
|--|--|---------------------------|--|
| THIS DRAWING IS A CONTROLLED DOCUMENT. |  | DWN THOMAS ZHAO 08JAN2013 | TE Connectivity<br>Customer Drawing<br>VERTICAL RECEPTACLE CONNECTOR<br>MULTI-BEAM HD S+P+LP+P+S |
| DIMENSIONS: mm                         |  | CHK SUNY ZHAO 08JAN2013   |  |
| TOLERANCES UNLESS OTHERWISE SPECIFIED: |  | AP'D SUNY ZHAO 08JAN2013  | NAME   |
| 0 PLC ±                                |  | PRODUCT SPEC              |  |
| 1 PLC ±0.25                            |  | APPLICATION SPEC          |  |
| 2 PLC ±0.25                            |  |                           |  |
| 3 PLC ±0.15                            |  |                           |  |
| 4 PLC ±                                |  |                           |  |
| FINISH                                 |  | WEIGHT                    |  |
| ANGLES                                 |  | RESTRICTED TO             |  |
| MATERIAL                               |  | SIZE                      | A1   |
|  |  | CAGE CODE                 | -  |
|  |  | DRAWING NO                | 2204421  |
|  |  | SCALE                     | 3:1  |
|  |  | SHEET                     | 2 OF 3   |
|  |  | REV                       | A  |

| LOC |     | DIST        |      | REVISIONS |      |  |  |
|-----|-----|-------------|------|-----------|------|--|--|
| P   | LTR | DESCRIPTION | DATE | DWN       | APPD |  |  |
| -   | -   | SEE SHEET 1 | -    | -         | -    |  |  |
|     |     |             |      |           |      |  |  |
|     |     |             |      |           |      |  |  |



THE DISTANCE IS 0.05 MM MATING FACE FROM R/A HEADER TO VERTICAL RECEPTACLE.

|  |       |                                 |                          |       |      |       |       |       |       |       |   |              |                               |
|--|-------|---------------------------------|--------------------------|-------|------|-------|-------|-------|-------|-------|---|--------------|-------------------------------|
| THIS DRAWING IS A CONTROLLED DOCUMENT.   |       | DWN<br>THOMAS ZHAO<br>08JAN2013 |                          |       |      |       |       |       |       |       |   |              |                               |
| DIMENSIONS: mm   |       | CHK<br>SUNY ZHAO<br>08JAN2013   |                          |       |      |       |       |       |       |       |   |              |                               |
| TOLERANCES UNLESS OTHERWISE SPECIFIED:   |       | APD<br>SUNY ZHAO<br>08JAN2013   | NAME<br>Customer Drawing |       |      |       |       |       |       |       |   |              |                               |
| <table border="1"> <tr><td>0 PLC</td><td>±</td></tr> <tr><td>1 PLC</td><td>±0.5</td></tr> <tr><td>2 PLC</td><td>±0.25</td></tr> <tr><td>3 PLC</td><td>±0.15</td></tr> <tr><td>4 PLC</td><td>±</td></tr> </table> |       | 0 PLC                           | ±                        | 1 PLC | ±0.5 | 2 PLC | ±0.25 | 3 PLC | ±0.15 | 4 PLC | ± | PRODUCT SPEC | VERTICAL RECEPTACLE CONNECTOR |
| 0 PLC  | ±     |                                 |                          |       |      |       |       |       |       |       |   |              |                               |
| 1 PLC  | ±0.5  |                                 |                          |       |      |       |       |       |       |       |   |              |                               |
| 2 PLC  | ±0.25 |                                 |                          |       |      |       |       |       |       |       |   |              |                               |
| 3 PLC  | ±0.15 |                                 |                          |       |      |       |       |       |       |       |   |              |                               |
| 4 PLC  | ±     |                                 |                          |       |      |       |       |       |       |       |   |              |                               |
| MATERIAL   |       | APPLICATION SPEC                | MULTI-BEAM HD S+P+LP+P+S |       |      |       |       |       |       |       |   |              |                               |
| FINISH   |       | SIZE<br>A1                      | CAGE CODE<br>2204421     |       |      |       |       |       |       |       |   |              |                               |
| ANGLES   |       | WEIGHT                          | DRAWING NO<br>2204421    |       |      |       |       |       |       |       |   |              |                               |
| CUSTOMER DRAWING   |       | RESTRICTED TO                   | SCALE<br>3:1             |       |      |       |       |       |       |       |   |              |                               |
|  |       | SCALE<br>3:1                    | SHEET<br>3 OF 3          |       |      |       |       |       |       |       |   |              |                               |
|  |       | REV<br>A                        |                          |       |      |       |       |       |       |       |   |              |                               |

# Mouser Electronics

Authorized Distributor

Click to View Pricing, Inventory, Delivery & Lifecycle Information:

[TE Connectivity:](#)

[2204421-1](#)