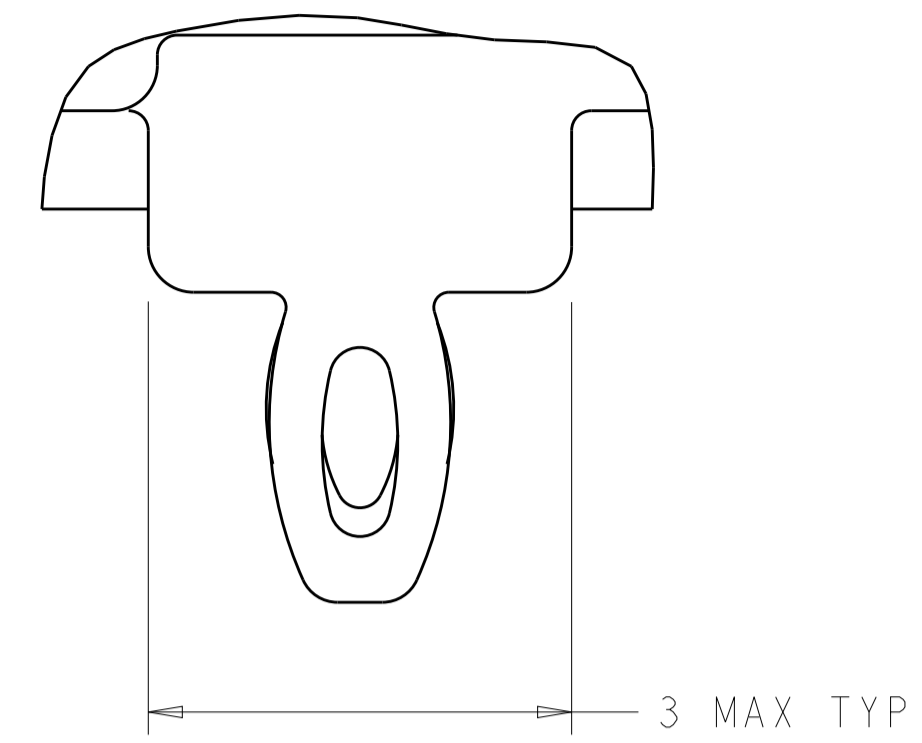


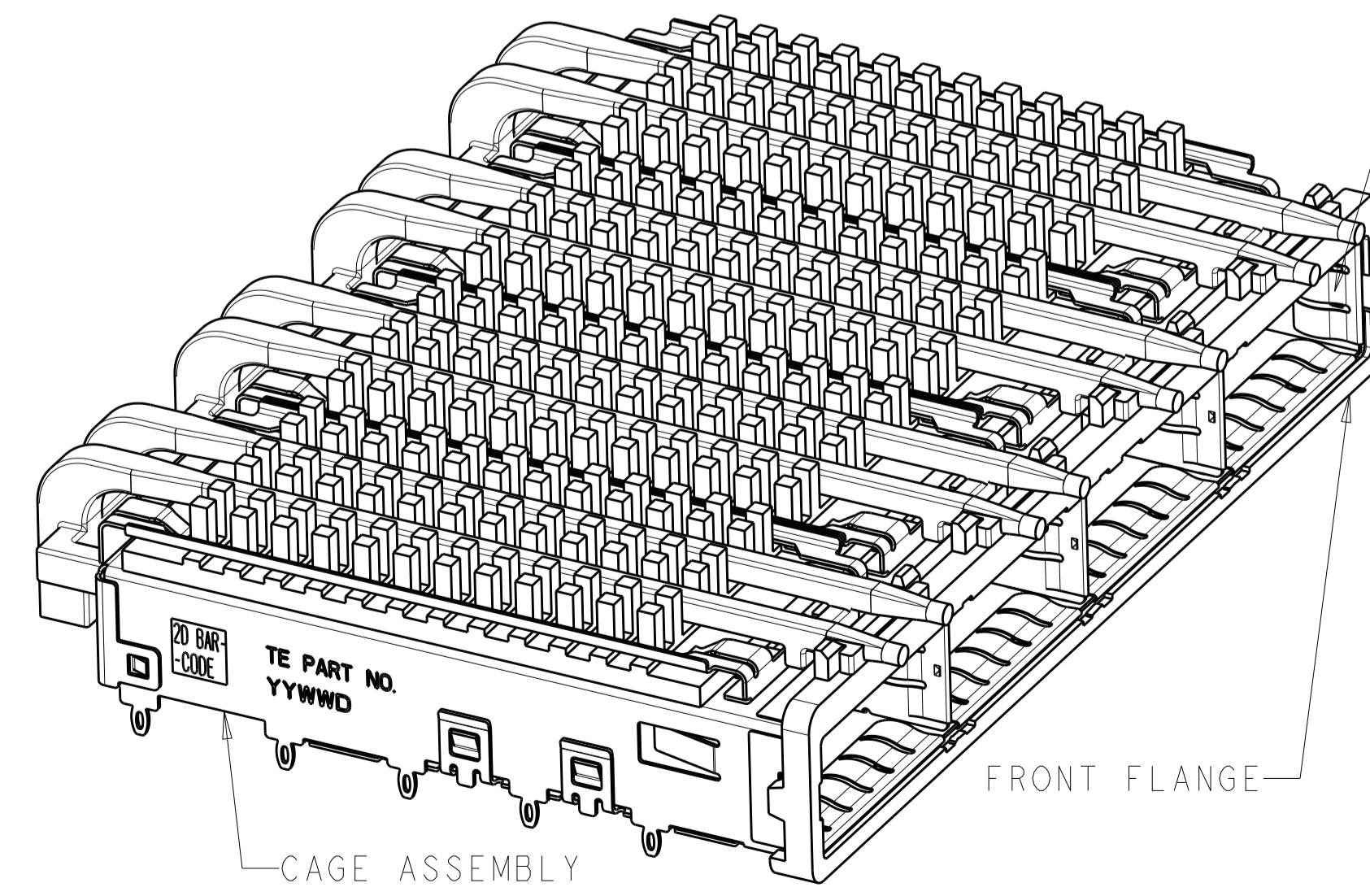
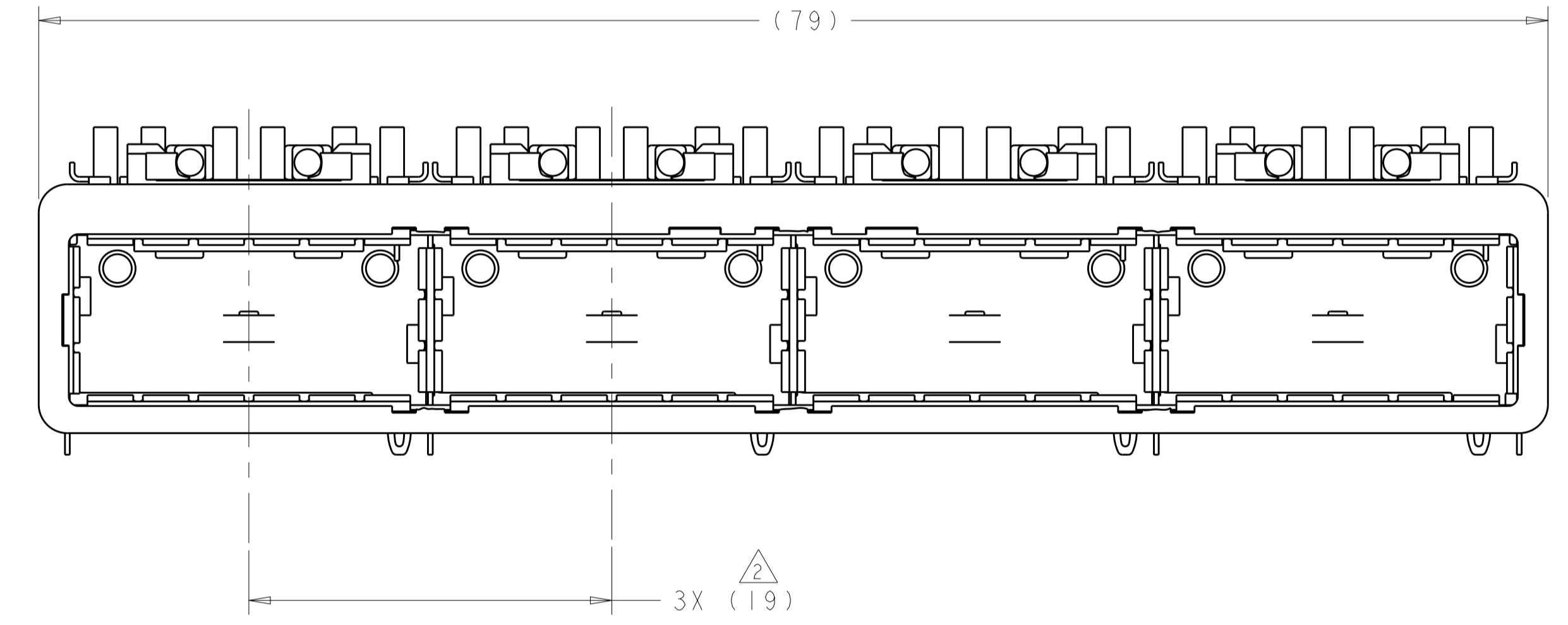
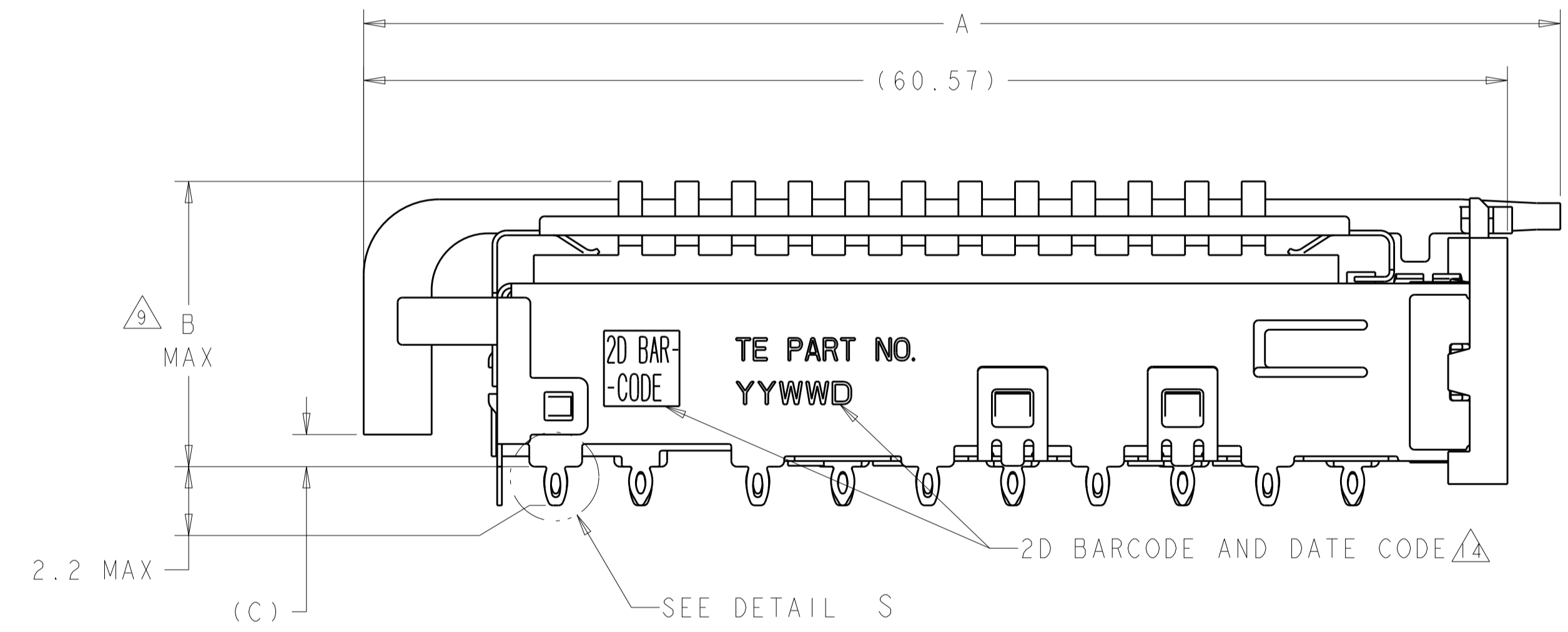
LOC	DIST	REVISIONS					
GP	00	P	LTN	DESCRIPTION	DATE	DWN	APVD
		A		ACTIVE THE DRAWING	03JAN2014	ZJ	JY
		B		REVISE PER ECO-15-000289	8JAN2015	RG	MC
		B1		ADD 2170567-6 AND 2170567-7	3MAY2015	RG	SH



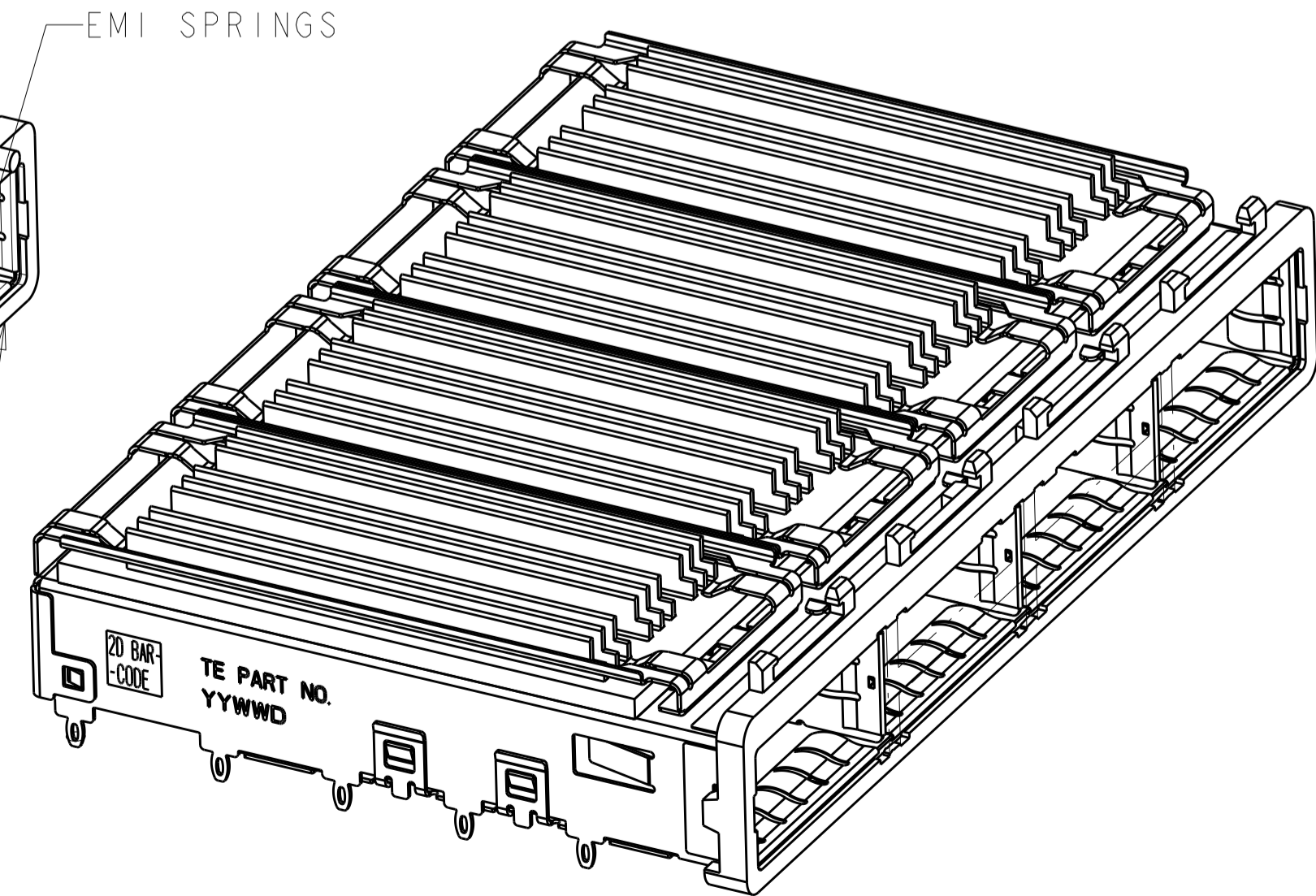
DETAIL S  
SCALE 20:1

- 1 CAGE ASSEMBLY MATERIAL: NICKEL SILVER, 0.25 THICK  
HEAT SINK MATERIAL: ALUMINUM  
HEAT SINK CLIP MATERIAL: STAINLESS STEEL  
EMI SPRING MATERIAL: COPPER ALLOY  
FRONT FLANGE MATERIAL: ZINC ALLOY  
LIGHT PIPE MATERIAL: CLEAR POLYCARBONATE
- 2 PITCH BETWEEN PORTS OF ONE 1X4 CAGE ASSEMBLY.
- 3 SPACING BETWEEN CAGES ON THE SAME PC BOARD, TO BE SPECIFIED BY CUSTOMER, MUST COMPLY WITH MINIMUM DIMENSIONS SHOWN.
- 4 REFERENCE APPLICATION SPEC 114-13218 FOR RECOMMENDED DRILL HOLE DIAMETER AND PLATING THICKNESS.
- 5 DATUMS AND BASIC DIMENSIONS ESTABLISHED BY CUSTOMER.
- 6 DIMENSION F IS THE NOMINAL THICKNESS OF CUSTOMER SUPPLIED PC BOARD,  
SINGLE SIDED PC BOARD MINIMUM THICKNESS = 1.45mm  
DOUBLE SIDED PC BOARD MINIMUM THICKNESS = 2.2mm PER QSFP.
- 7 HEAT SINKS, LIGHT PIPES, AND HEAT SINK CLIPS SHIPPED ASSEMBLED TO CAGE ASSEMBLY. CAGE ASSEMBLY MAY BE PRESSED INTO THE PCB AS SHIPPED.
- 8 DATUM -A- IS TOP SURFACE OF PC BOARD.
- 9 DIMENSION APPLIES WITH MODULE INSERTED IN CAGE.
- 10 UNPLATED THRU HOLE.
- 11. MATES WITH QSFP MSA COMPATIBLE TRANSCEIVER.
- 12 SURFACE TRACES PERMITTED WITHIN THIS AREA EXCEPT WHERE CAGE STANDOFFS, SHOWN IN DETAIL S, CONTACT PC BOARD.
- 13 BASELINE FOR THESE DIMENSIONS IS THE CENTER OF COMPLIANT PIN HOLE.
- 14 2D BARCODE AND DATE CODE (YYWW) MARKED ON SIDE OF CAGE.

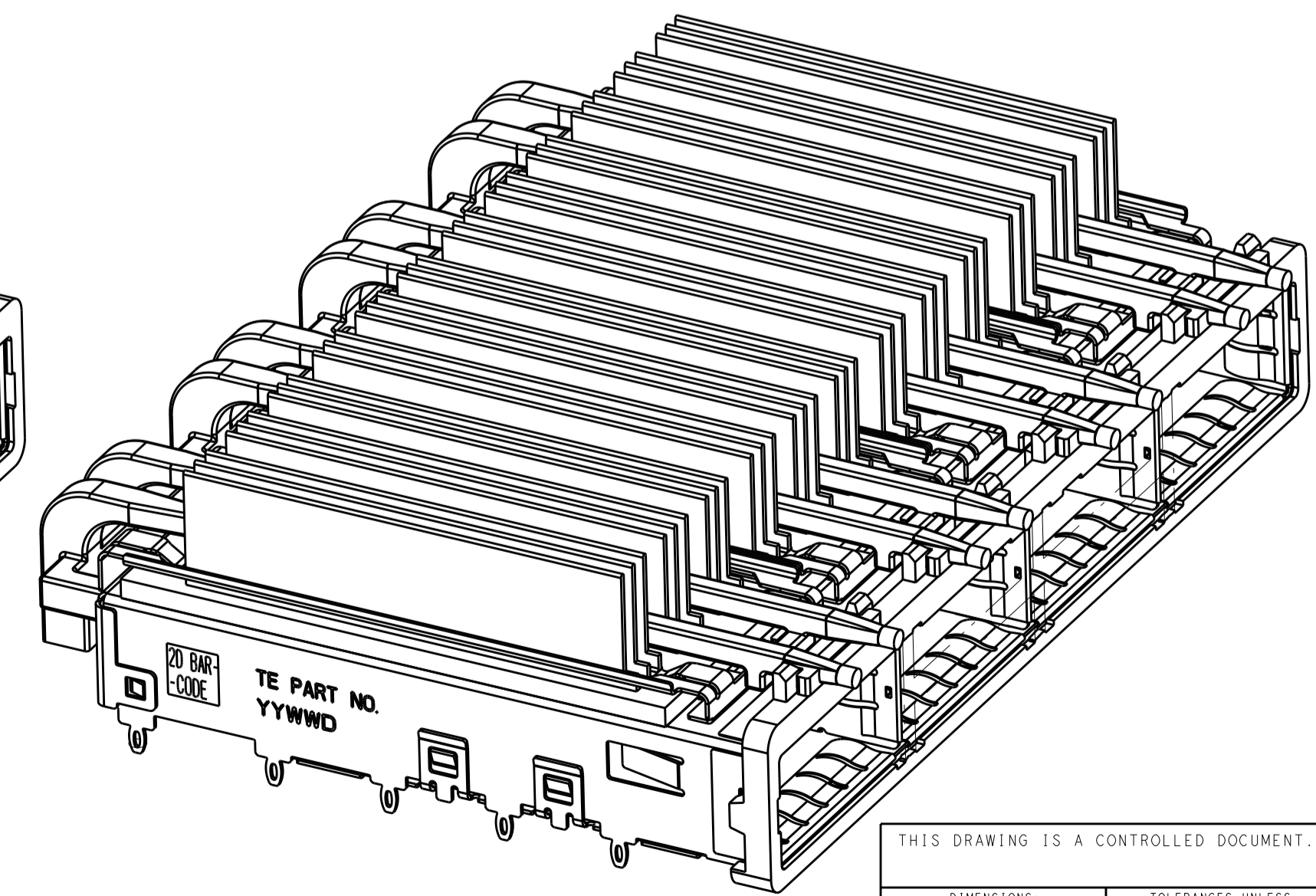
- 15 REFERENCE APP SPEC 114-13218 FOR GASKET THICKNESS CALCULATION.
- 16 EMI SPRING FINISH: 2µm MINIMUM TIN  
FRONT FLANGE FINISH: 3µm MINIMUM TIN OVER 1.27µm MINIMUM NICKEL OVER 5.08µm MINIMUM COPPER.  
HEAT SINK FINISH: BLACK ANODIZE PROCESS



2170567-3  
SCALE 5:2



2170567-6  
SCALE 5:2



2170567-7  
SCALE 5:2

A	B	HEAT SINK PROFILE	PART NUMBER
62.57	21.0	CUSTOMIZED	2170567-7
N/A	15.0	CUSTOMIZED	2170567-6
62.15	16.8	CUSTOMIZED	2170567-5
64.07	23.0	NETWORKING	2170567-4
64.07	16.0	SAN	2170567-3
64.07	16.8	CUSTOMIZED	2170567-2
64.07	13.7	PCI	2170567-1

THIS DRAWING IS A CONTROLLED DOCUMENT.

DIMENSIONS: mm

TOLERANCES UNLESS OTHERWISE SPECIFIED:

MATERIAL: 1

FINISH: 16

Customer Drawing

DWN: ZJ  
CHK: JASON  
APVD: JG

01JUL2013  
01JUL2013  
01JUL2013

PRODUCT SPEC: 108-2286  
APPLICATION SPEC: 114-13218

WEIGHT: -

Customer Drawing

SCALE: 4:1

SHEET 1 OF 5

REV: B1

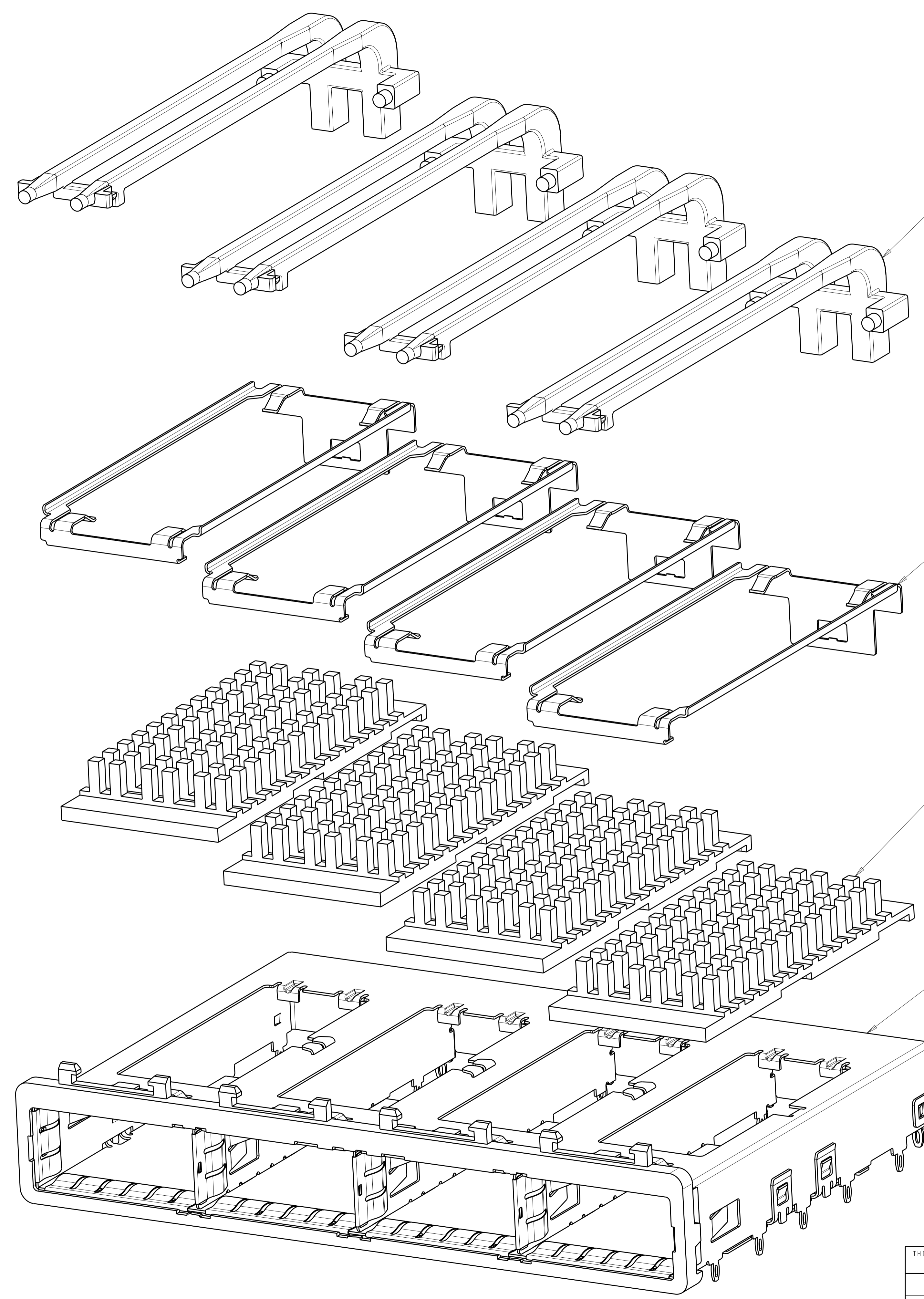
TE Connectivity

NAME: 1X4 CAGE ASSEMBLY, BEHIND BEZEL, W/ LIGHT PIPES AND HEAT SINKS, QSFP

SIZE: A1

DRAWING NO: C=2170567

LOC		DIST		REVISIONS			
GP	00	P	LYR	DESCRIPTION	DATE	OWN	APVD
		-		SEE SHEET 1			




DOUBLE LIGHT PIPES  $\triangle$   
 QUANTITY: 4

HEAT SINK CLIPS  $\triangle$   
 QUANTITY: 4

72 PIN HEAT SINKS  $\triangle$   
 QUANTITY: 4

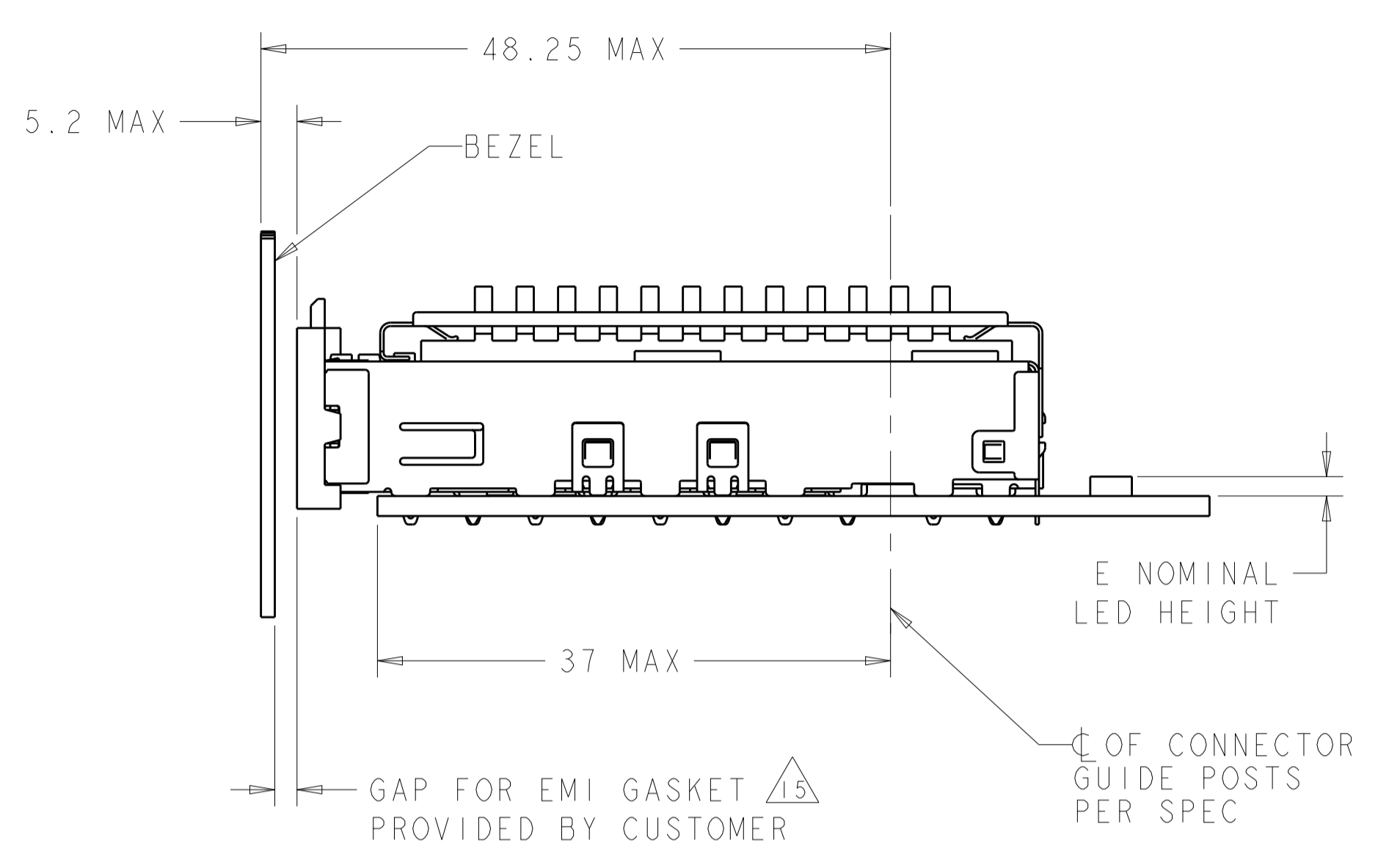
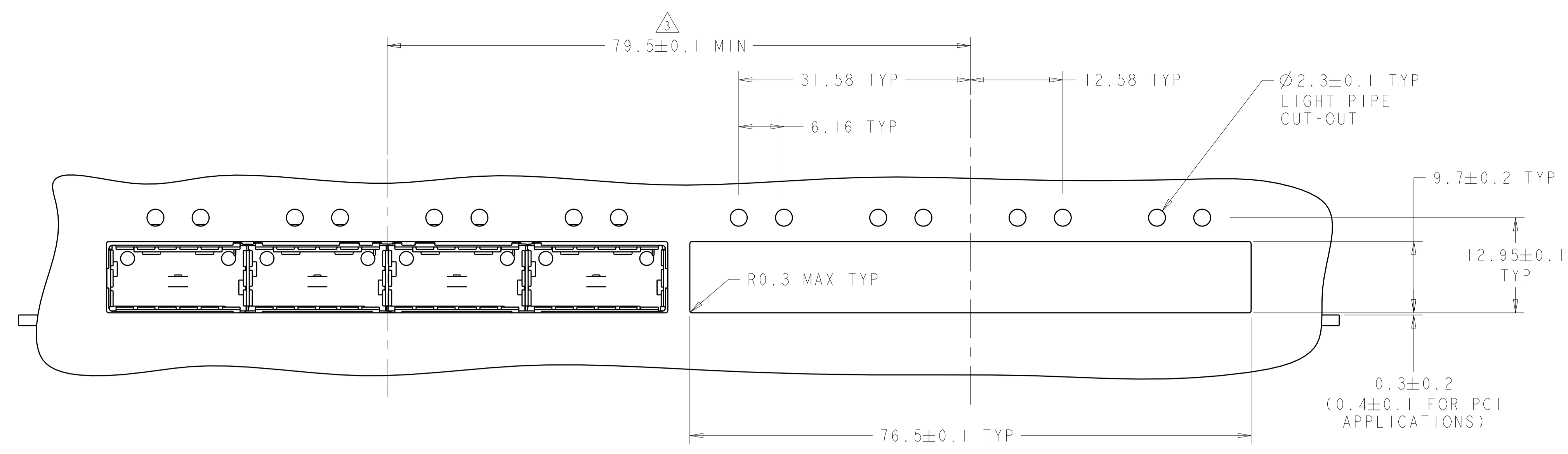
1X4 BEHIND BEZEL QSFP  
 CAGE ASSEMBLY  
 QUANTITY: 1

THIS DRAWING IS A CONTROLLED DOCUMENT.		OWN	01JUN2013	 TE Connectivity
		CHK	01JUL2013	
		APVD	01JUL2013	NAME 1X4 CAGE ASSEMBLY, BEHIND BEZEL, W/ LIGHT PIPES AND HEAT SINKS, QSFP
		AC		
DIMENSIONS:		TOLERANCES UNLESS OTHERWISE SPECIFIED:		PRODUCT SPEC
mm	0 PLC	±		108-2286
	1 PLC	±0.1		APPLICATION SPEC
	2 PLC	±0.1		114-13218
	3 PLC	±		WEIGHT
	4 PLC	±		Customer Drawing
	ANGLES	±		SCALE
	FINISH	±		4:1
MATERIAL				SIZE
				A1
				CAGE CODE
				2170567
				DRAWING NO
				2
				OF
				5
				REV
				B1

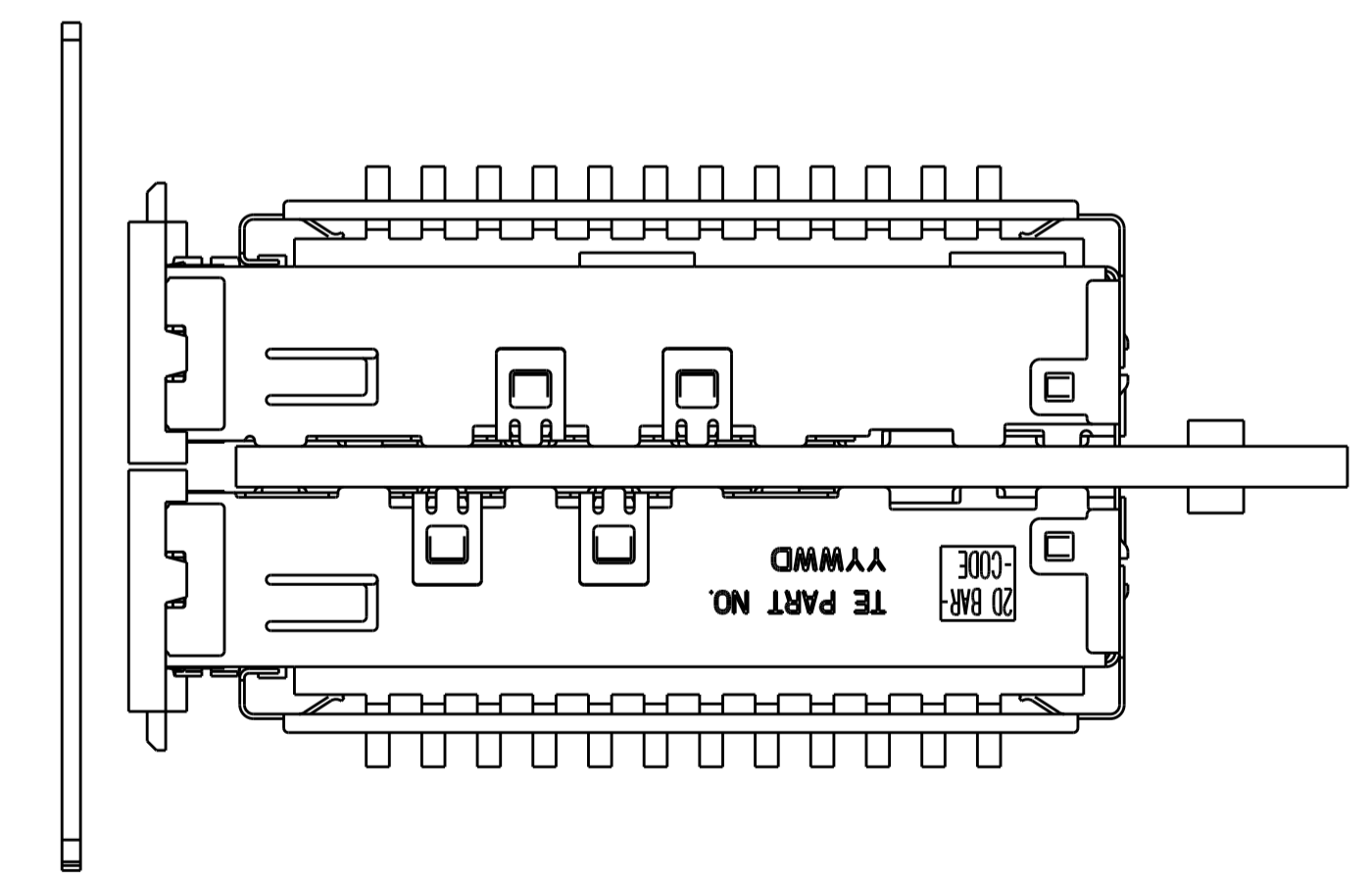
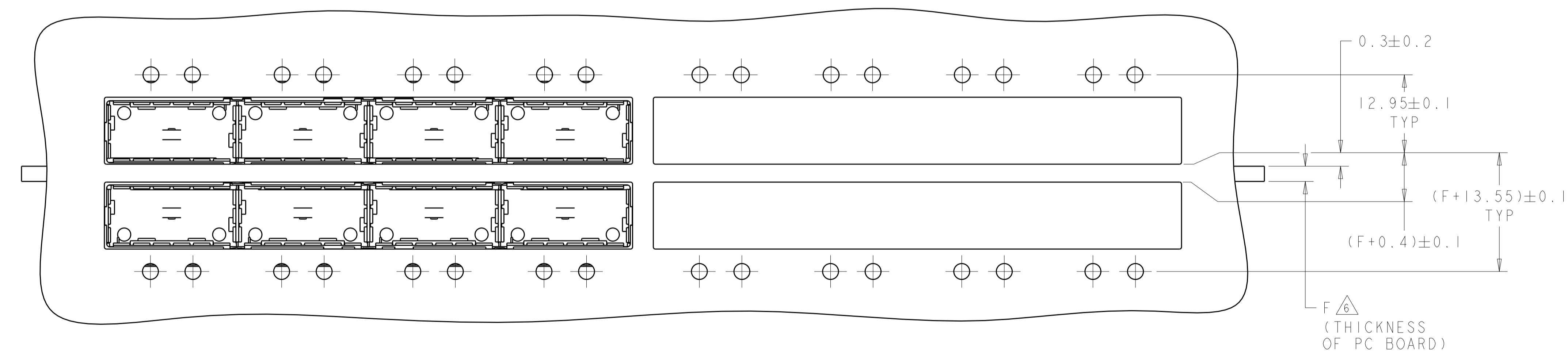
LOC	DIST	REV	DATE	BY	APPD
GP	00				

REVISIONS					
REV	DATE	BY	APPD	DESCRIPTION	DATE
-	-	-	-	SEE SHEET 1	-



ONE SIDED CONFIGURATION  
 SCALE 5:2

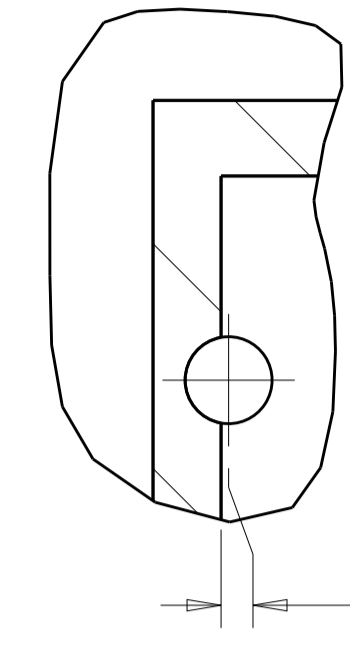
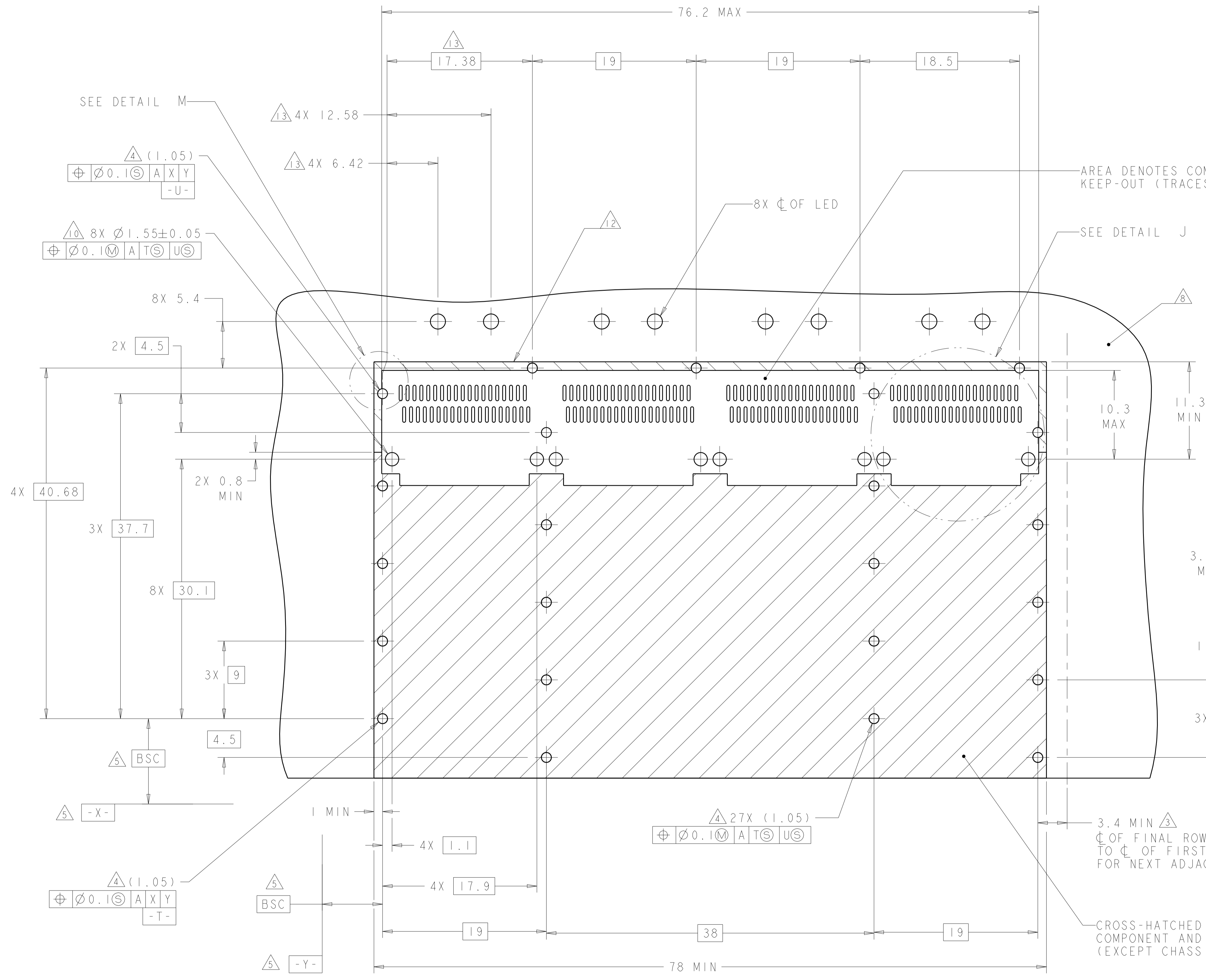


BELLY TO BELLY CONFIGURATION  
 SIMILAR TO ONE SIDED  
 EXCEPT WHERE NOTED  
 SCALE 5:2

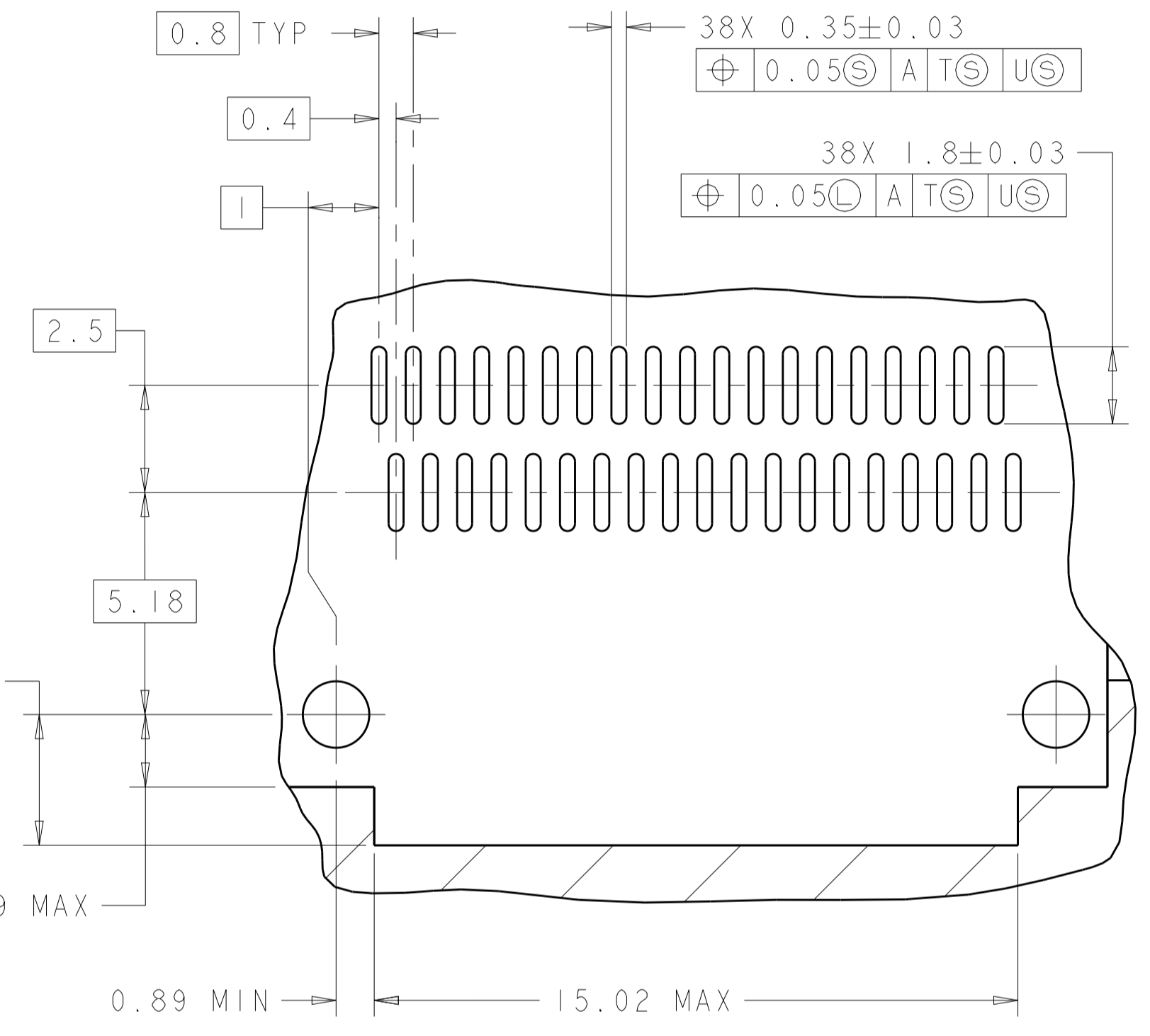
THIS DRAWING IS A CONTROLLED DOCUMENT.		OWN: 01JUL2013	TE Connectivity
DIMENSIONS: mm		CHK: JASON 01JUL2013	
TOLERANCES UNLESS OTHERWISE SPECIFIED:		APPD: AC 01JUL2013	NAME: 1X4 CAGE ASSEMBLY, BEHIND BEZEL, W/ LIGHT PIPES AND HEAT SINKS, QSFP
0 PLC ±	1 PLC ±0.1	PRODUCT SPEC	SIZE: A1
2 PLC ±0.1	3 PLC ±	108-2286	CAGE CODE: -
4 PLC ±	ANGLES ±	APPLICATION SPEC	DRAWING NO: C=2170567
MATERIAL: -	FINISH: -	114-13218	RESTRICTED TO: -
Customer Drawing		WEIGHT: -	SCALE: 4:1
			SHEET 3 OF 5
			REV: B1

LOC	DIST	REV	DATE	BY	APPV
GP	00				

REVISIONS					
NO.	DESCRIPTION	DATE	BY	APPV	
1	SEE SHEET 1				



DETAIL M  
SCALE 10:1



DETAIL J  
3 PLACES  
SCALE 8:1

RECOMMENDED PC BOARD LAYOUT  
SINGLE SIDE MOUNT CONFIGURATION  
SCALE 4:1

AREA DENOTES COMPONENT  
KEEP-OUT (TRACES PERMITTED)

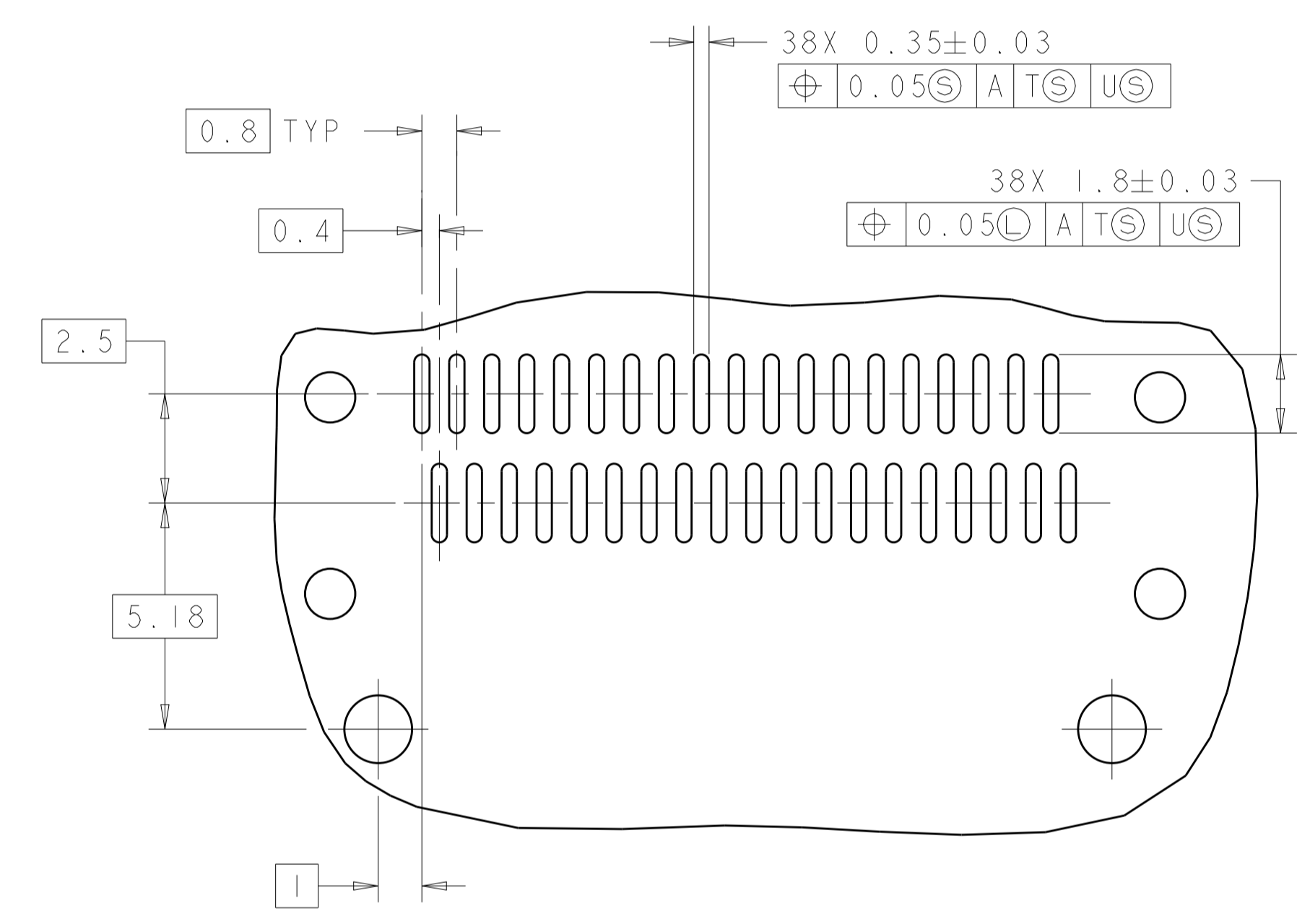
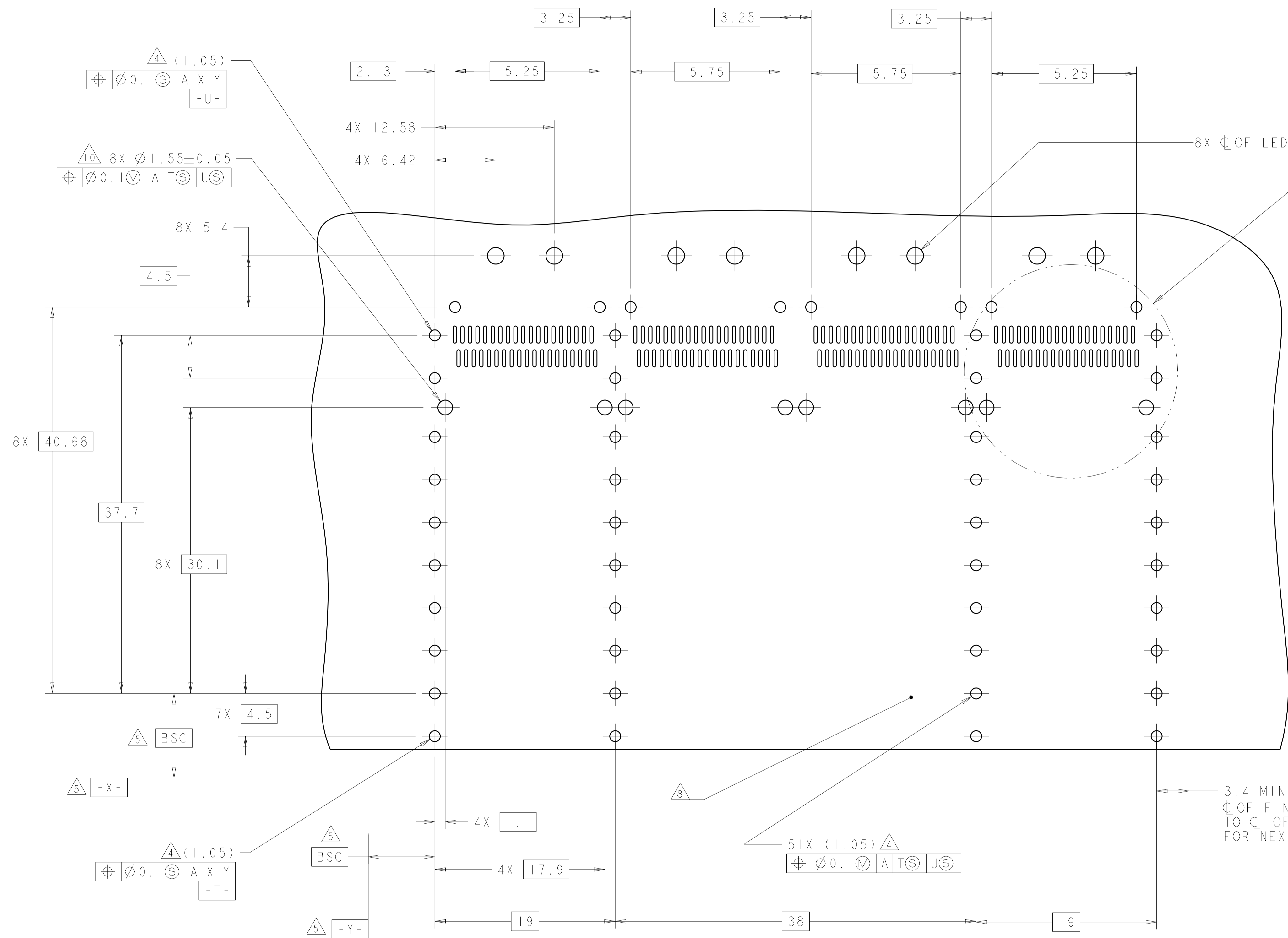
SEE DETAIL J

3.4 MIN  $\Delta$   
CL OF FINAL ROW OF HOLES  
TO CL OF FIRST ROW OF HOLES  
FOR NEXT ADJACENT CAGE

CROSS-HATCHED AREA DENOTES  
COMPONENT AND TRACE KEEP-OUT  
(EXCEPT CHASSIS GROUND)

THIS DRAWING IS A CONTROLLED DOCUMENT.		OWN: ZJ	01 JUL 2013	 TE Connectivity
DIMENSIONS: mm		CHK: JSAON	01 JUL 2013	
TOLERANCES UNLESS OTHERWISE SPECIFIED:		APPV: AC	01 JUL 2013	NAME: 1X4 CAGE ASSEMBLY, BEHIND BEZEL, W/ LIGHT PIPES AND HEAT SINKS, QSFP
0 PLC ±0.1		PRODUCT SPEC	108-2286	
1 PLC ±0.1		APPLICATION SPEC	114-13218	SIZE: A1 CAGE CODE: C=2170567
2 PLC ±0.1		WEIGHT		
3 PLC ±0.1		Customer Drawing	SCALE 4:1 SHEET 4 OF 5	REV: B1
4 PLC ±0.1				
ANGLES ±0.1				
FINISH				

LOC	DIST	REVISIONS			
GP	00	REV	DATE	BY	APPV
-	-	SEE SHEET 1	-	-	-



DETAIL K  
SCALE 8:1

RECOMMENDED PC BOARD LAYOUT  
BELLY TO BELLY CONFIGURATION  
SEE SHEET 4 FOR COMPONENT AND TRACE KEEP-OUTS  
SCALE 4:1

THIS DRAWING IS A CONTROLLED DOCUMENT.		OWN: ZJ	01 JUL 2013	TE Connectivity
DIMENSIONS: mm		CHK: JASON	01 JUL 2013	
TOLERANCES UNLESS OTHERWISE SPECIFIED:		APPV: AC	01 JUL 2013	
0 PLC ± 1 PLC ±0.1 2 PLC ±0.1 3 PLC ± 4 PLC ± ANGLES ± FINISH ±		PRODUCT SPEC: 108-2286	NAME: 1X4 CAGE ASSEMBLY, BEHIND BEZEL, W/ LIGHT PIPES AND HEAT SINKS, QSFP	
MATERIAL: -	FINISH: -	APPLICATION SPEC: 114-13218	RESTRICTED TO: -	SIZE: A1
		WEIGHT: -	SCALE: 4:1	SHEET 5 OF 5
		Customer Drawing	REV: B1	

# Mouser Electronics

Authorized Distributor

Click to View Pricing, Inventory, Delivery & Lifecycle Information:

[TE Connectivity:](#)

[2170567-2](#)