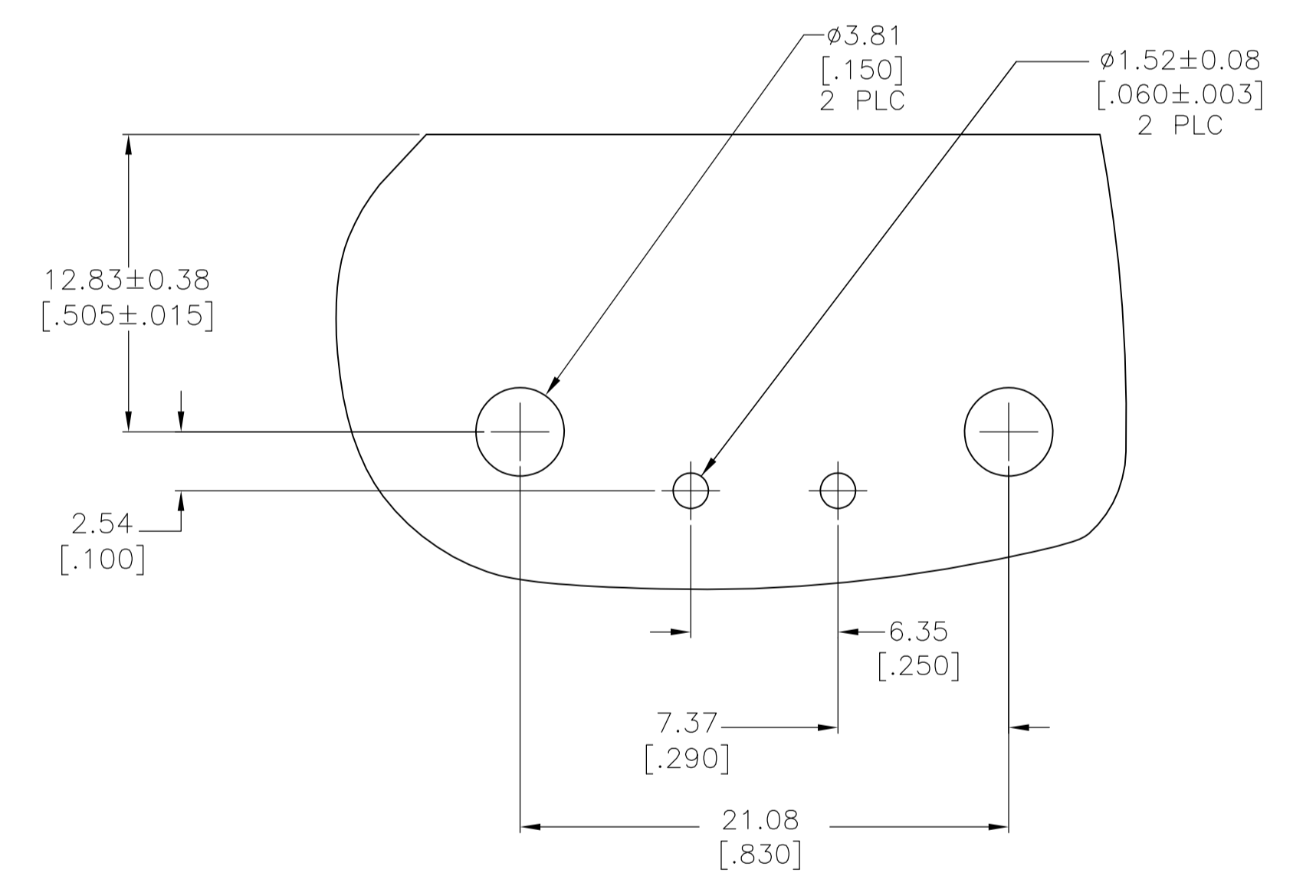
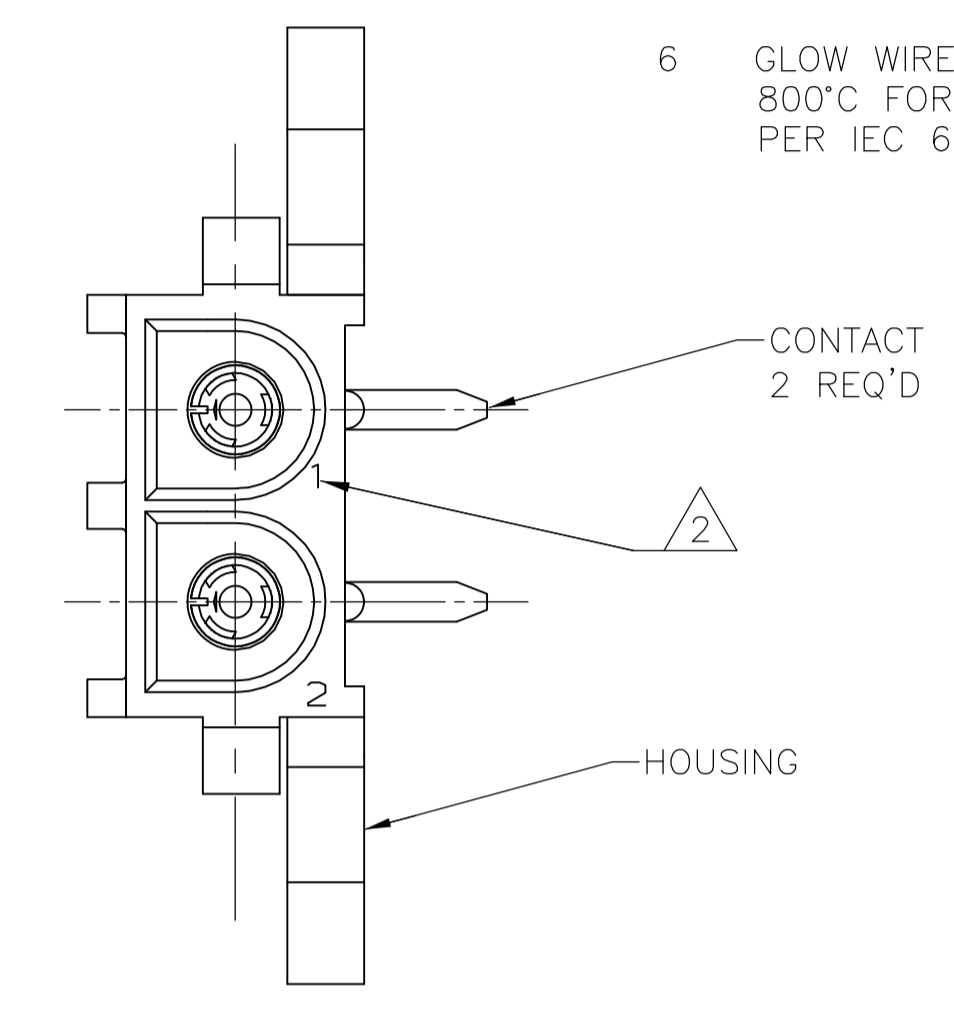
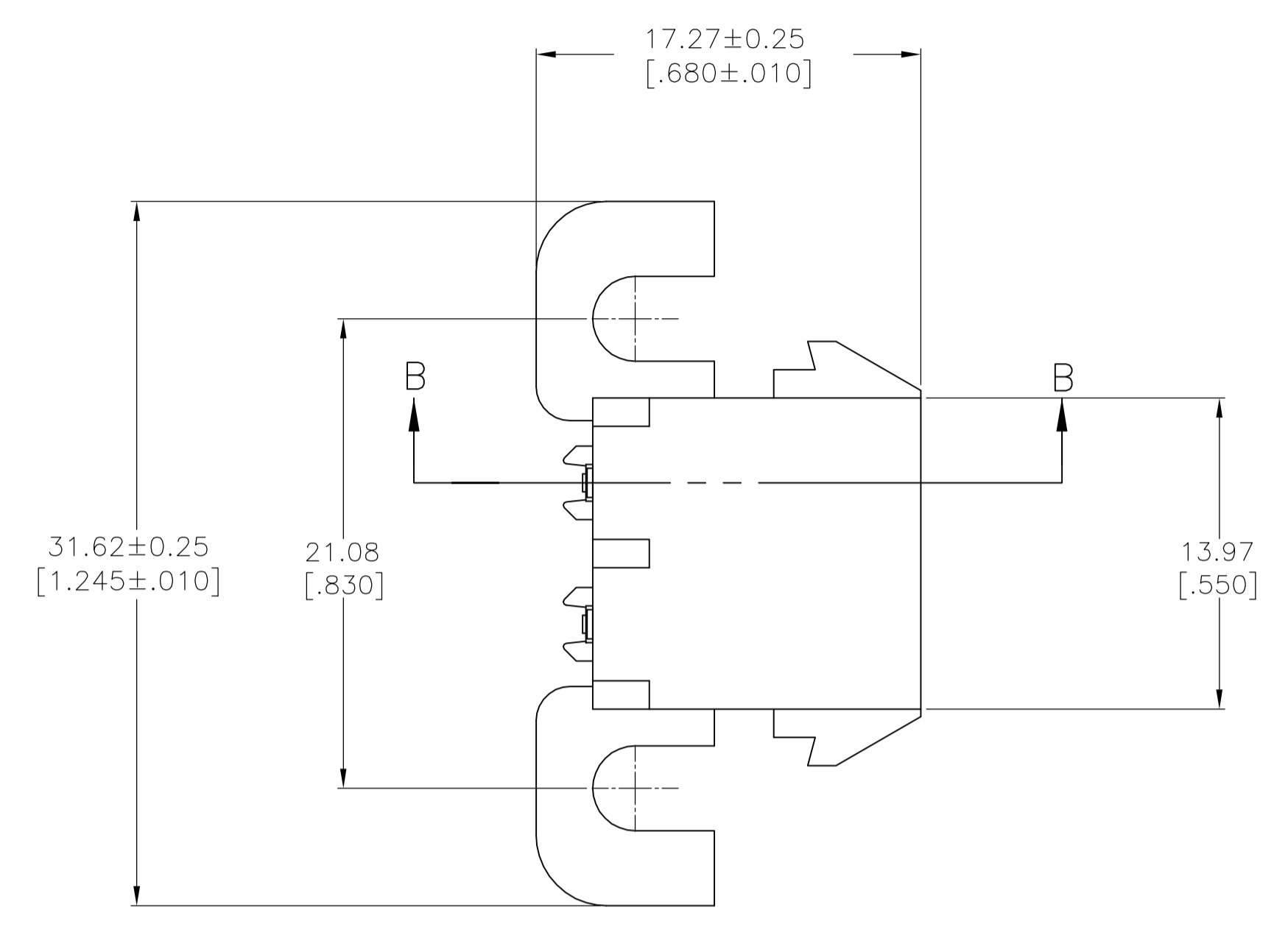
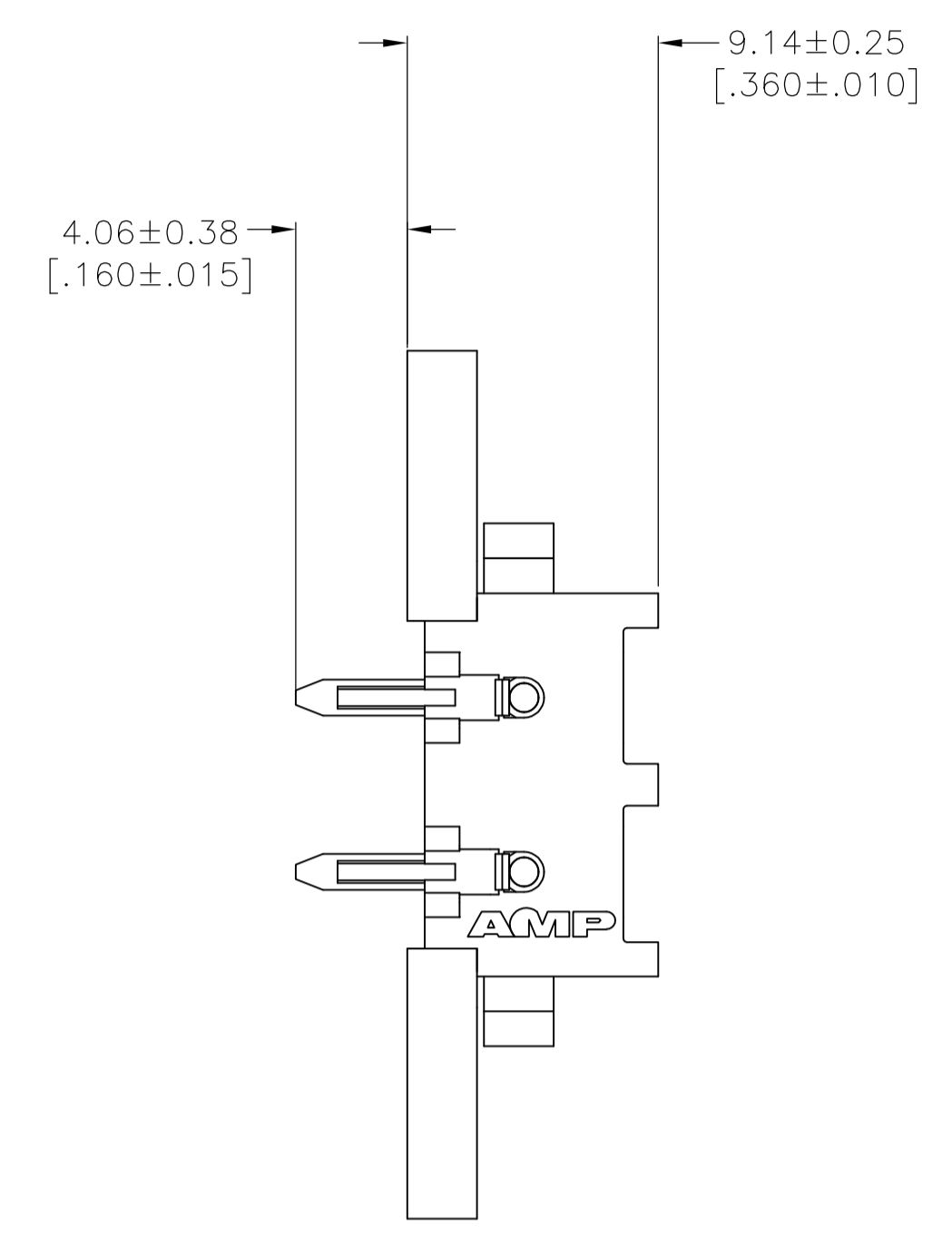
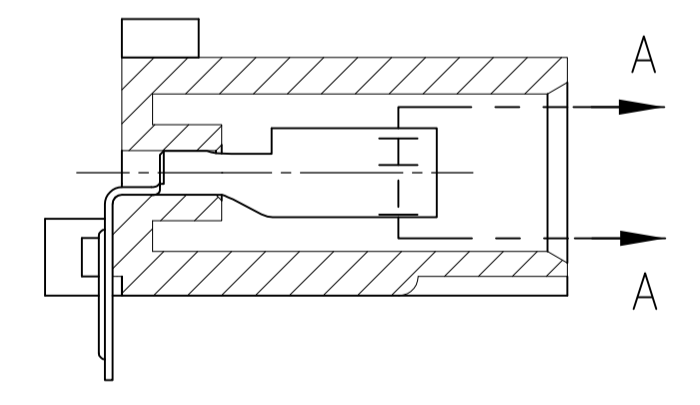


REVISIONS					
REV	DATE	DESCRIPTION	BY	CHK	APP'D
A	10MAR2016	REVISED PER ECR-16-002640	BW	EW	

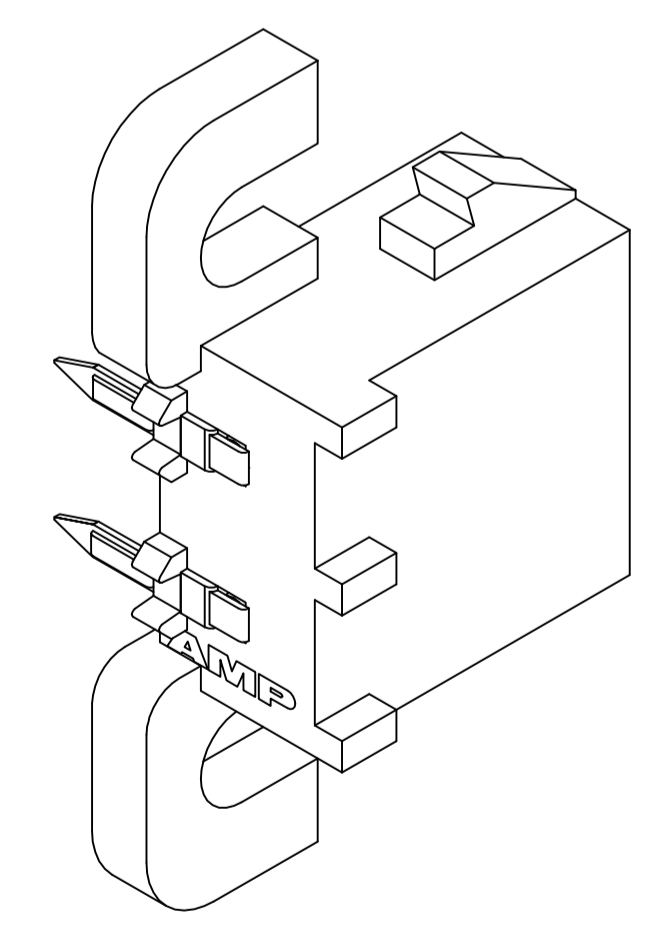
- PARTS COMPLY WITH AMP SOLDERABILITY SPECIFICATION 109-11-5.
- △ CIRCUIT IDENTIFICATION CHARACTERS ARE ADJACENT TO THE INDICATED CAVITIES, BUT LOCATION AND ORIENTATION MAY DIFFER FROM PRINT.
- DIMENSIONS IN BRACKETS ARE IN INCHES.
- FLAMMABILITY UL V-0 FOR THICKNESS 0.4, 0.45, 0.8, 1.6, AND 3.0 PER IEC 60695-11-10.
- GLOW WIRE FLAMMABILITY (GWF1): 960°C FOR THICKNESS 0.45, 0.8, 1.6, AND 3.0 PER IEC 60695-2-12.
- GLOW WIRE IGNITION (GWIT): 825°C FOR THICKNESS 0.45, 800°C FOR THICKNESS 0.8, 775°C FOR THICKNESS 1.6 AND 3.0 PER IEC 60695-2-13.



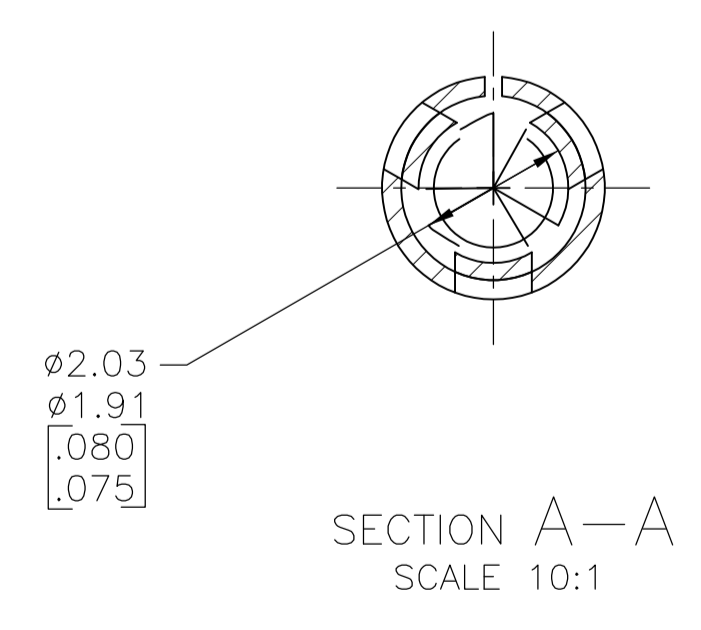
RECOMMENDED MOUNTING HOLE PATTERN FOR 1.57[.062] THICK P.C. BOARD



SECTION B-B



3-DIMENSIONAL MODEL NTS



SECTION A-A SCALE 10:1

PH BRZ TIN	NYLON UL V-0 GW	1969797-1
CONTACT	HOUSING	PART NO

THIS DRAWING IS A CONTROLLED DOCUMENT.		DIN	26DEC2015	STE TE Connectivity	
DIMENSIONS: mm [INCHES]		DESIGNED BY	BASVESH WARAD	NAME	
TOLERANCES UNLESS OTHERWISE SPECIFIED:		CHK	WICKES, EVAN	PRODUCT SPEC	
0 PLC	± -	APP'D	WICKES, EVAN	APPLICATION SPEC	
1 PLC	± -	SIZE	A1	CAGE CODE	1969797
2 PLC	± -	WEIGHT	-	SCALE	4:1
3 PLC	± 0.13[.005]	CUSTOMER DRAWING		SHEET	1 OF 1
4 PLC	± -			REV	A
ANGLES	± -				
FINISH	SEE TABLE				

Mouser Electronics

Authorized Distributor

Click to View Pricing, Inventory, Delivery & Lifecycle Information:

[TE Connectivity:](#)

[1969797-1](#)