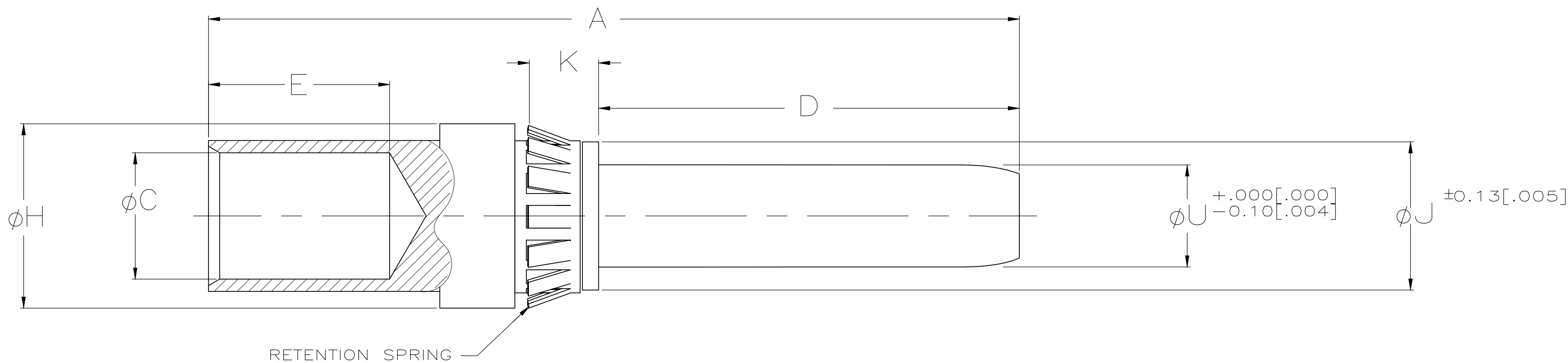


THIS DRAWING IS UNPUBLISHED. RELEASED FOR PUBLICATION  
 © COPYRIGHT - TE Connectivity Ltd. ALL RIGHTS RESERVED.

REVISIONS					
P	LTR	DESCRIPTION	DATE	DWN	APVD
E1		REVISED PER ECR-19-010604	7/25/19	OL	SZ



④ ① ②	4	5.08	6.65	7.62	9.1	19.1	4.60	38.9	8	4 mm	193837-8
	[.157]	[.20]	[.262]	[.300]	[.36]	[.75]	[.181]	[1.53]			
④	8	5.08	13.51	14.48	17.5	33	12.37	66.8	1/0	8 mm	193837-7
	[.315]	[.20]	[.532]	[.570]	[.69]	[1.30]	[.487]	[2.63]			
④	8	5.08	13.51	14.48	14.2	33	9.91	63.5	2	8 mm	193837-6
	[.315]	[.20]	[.532]	[.570]	[.56]	[1.30]	[.390]	[2.50]			
④	6	5.08	9.45	10.41	11.7	19.3	7.36	43.9	4	6 mm	193837-5
	[.236]	[.20]	[.372]	[.410]	[.46]	[.76]	[.290]	[1.73]			
④	6	5.08	9.45	10.41	9.4	19.3	5.97	41.7	6	6 mm	193837-4
	[.236]	[.20]	[.372]	[.410]	[.37]	[.76]	[.235]	[1.64]			
④	4	5.08	6.65	7.62	9.1	19.1	4.60	38.9	8	4 mm	193837-3
	[.157]	[.20]	[.262]	[.300]	[.36]	[.75]	[.181]	[1.53]			
④	4	5.08	6.65	7.62	9.1	19.1	3.68	38.9	10	4 mm	193837-2
	[.157]	[.20]	[.262]	[.300]	[.36]	[.75]	[.145]	[1.53]			
④	2	5.08	4.75	5.72	9.1	16.3	2.54	35.6	12/14	2 mm	193837-1
	[.079]	[.20]	[.187]	[.225]	[.36]	[.64]	[.105]	[1.40]			
	$\phi U$	K	$\phi J$	$\phi H$	E	D	$\phi C$	A	WIRE AWG	PIN SIZE	PART NO.

NOTES:

- ① LUBRICATED AT ASSY
- ② PRELIMINARY PART NO.
- ③ PIN FINISH: .200  $\mu$ IN MIN. THICK SILVER OVER .500  $\mu$ IN MIN THICK NICKEL
- ④ OBSOLETE PART NO.

THIS DRAWING IS A CONTROLLED DOCUMENT.		DWN DAB 09-10-93	<b>TE</b> TE Connectivity	
DIMENSIONS: INCHES		CHK JMT 09-10-93		
TOLERANCES UNLESS OTHERWISE SPECIFIED:		APVD -	NAME ASSY,PIN,2-8mm,CRIMP	
0 PLC $\pm$ -		PRODUCT SPEC -	SIZE A2	
1 PLC $\pm$ -		APPLICATION SPEC -	CAGE CODE 00779	
2 PLC $\pm$ 0.40 [.015]		WEIGHT 0.000000	DRAWING NO C=193837	
3 PLC $\pm$ 0.25 [.010]		CUSTOMER DRAWING	RESTRICTED TO -	
4 PLC $\pm$ -		SCALE 4:1	SHEET 1 OF 1	
ANGLES $\pm$ -		REV E1		
FINISH - ③				

CUSTOMER DRAWING

# Mouser Electronics

Authorized Distributor

Click to View Pricing, Inventory, Delivery & Lifecycle Information:

[TE Connectivity:](#)

[193837-7](#)