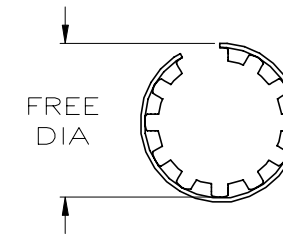
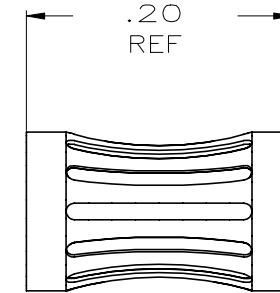


P	LTR	DESCRIPTION	DATE	DWN	APVD
-	-	SEE SHEET 1	-	-	-

D

D

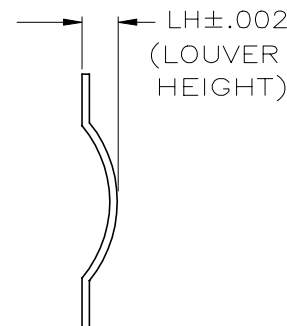
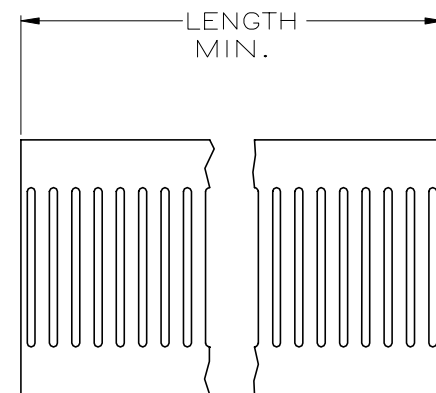


STYLE A (FEMALE)

C

C

FREE DIA	(LH)	STYLE	LENGTH	MATING	NUM LOUV	PLATING (NOTE)	MAT'L (NOTE)	MAT'L THK	REF	PART NO.			
[.20]	[.022]	A	--	[.157]	18	3-2	12	0.12[.005]	05013	9-192044-9			
[.20]	[.022]	A	--	[.157]	18	1-2	12	0.12[.005]	05130	9-192044-8			
[.20]	[.022]	A	--	[.157]	18	UNPL	12	0.12[.005]	05131	9-192044-7			
[.20]	[.018]	A	--	[.152]	16	7-2	12	0.15[.006]	05012	9-192044-6			
[.20]	[.018]	A	--	[.150]	16	7-2	12	0.12[.005]	05011	9-192044-5	OBSOLETE		
[.19]	[.018]	A	--	[.143]	17	3-2	12	0.12[.005]	05098	9-192044-4			
[.19]	[.018]	A	--	[.143]	17	1-2	12	0.12[.005]	05188	9-192044-3			
[.19]	[.018]	A	--	[.143]	17	UNPL	12	0.12[.005]	05153	9-192044-2			
[.16]	[.015]	--	--	[.125]	14	3-2	12	0.15[.006]	05010	9-192044-1	△19		
[.16]	[.015]	--	--	[.125]	14	1-2	12	0.15[.006]	05057	9-192044-0			
[.15]	[.015]	A	--	[.125]	14	UNPL	12	0.15[.006]	05154	8-192044-9			
[.15]	[.015]	A	--	[.125]	13	UNPL	12	0.15[.006]	05047	8-192044-8			
[.15]	[.022]	A	--	[.125]	13	UNPL	13	0.12[.005]	05026	8-192044-7			
SUPERSEDED BY 193670-4										05183	8-192044-6	OBSOLETE	△19
[.16]	[.015]	A	--	[.125]	14	7-2	12	0.12[.005]	05109	8-192044-5			
[.16]	[.015]	A	--	[.125]	14	3-2	12	0.12[.005]	05060	8-192044-4			
[.16]	[.015]	A	--	[.125]	14	1-2	12	0.12[.005]	05061	8-192044-3			
[.16]	[.015]	A	--	[.125]	14	UNPL	12	0.12[.005]	05062	8-192044-2	OBSOLETE	△19	
[.16]	[.018]	A	--	[.125]	14	4-2	12	0.10[.004]	05132	8-192044-1			
[.16]	[.018]	A	--	[.125]	14	8	12	0.10[.004]	05149	8-192044-0			
[.16]	[.018]	A	--	[.125]	14	UNPL	12	0.10[.004]	05070	7-192044-9			
SUPERSEDED BY 7-192044-9										05068	7-192044-8		
[.20]	[.018]	A	--	[.125]	14	UNPL	12	0.07[.003]	05079	7-192044-7	OBSOLETE		
SUPERSEDED BY 8-192044-4										--	7-192044-6		
[.06]	[.022]	A	--	[.030]	4	3-2	12	0.10[.004]	05009	7-192044-5			
[.06]	[.022]	A	--	[.030]	4	UNPL	12	0.10[.004]	05008	7-192044-4			
[.13]	[.018]	A	--	[.094]	11	UNPL	12	0.15[.006]	05053	7-192044-3			
[.14]	[.016]	A	--	[.093]	12	3-2	12	0.12[.005]	05126	7-192044-2	OBSOLETE		
[.14]	[.016]	A	--	[.093]	12	3-2	12	0.12[.005]	05160	7-192044-1			
[.14]	[.016]	A	--	[.093]	12	1-2	12	0.12[.005]	05128	7-192044-0			
[.14]	[.016]	A	--	[.093]	12	UNPL	12	0.12[.005]	05125	6-192044-9			
[.12]	[.022]	A	--	[.080]	10	8	12	0.20[.008]	05173	6-192044-8	OBSOLETE		
[.12]	[.022]	A	--	[.080]	10	7-2	12	0.20[.008]	05124	6-192044-7			
[.12]	[.022]	A	--	[.080]	10	3-2	12	0.20[.008]	05007	6-192044-6	OBSOLETE	△19	
[.12]	[.022]	A	--	[.080]	10	UNPL	12	0.20[.008]	05044	6-192044-5	OBSOLETE	△19	
[.12]	[.021]	A	--	[.080]	9	3-2	12	0.12[.005]	05179	6-192044-4			
[.12]	[.021]	A	--	[.080]	9	UNPL	12	0.12[.005]	05180	6-192044-3			
[.12]	[.018]	A	--	[.080]	9	7-2	12	0.10[.004]	05172	6-192044-2	OBSOLETE		
[.12]	[.018]	A	--	[.080]	9	4-2	12	0.10[.004]	05112	6-192044-1			
[.12]	[.018]	A	--	[.080]	9	1-2	12	0.10[.004]	05118	6-192044-0			
[.12]	[.018]	A	--	[.080]	9	UNPL	12	0.10[.004]	05108	5-192044-9	OBSOLETE	△19	
[.09]	[.020]	A	--	[.065]	8	UNPL	13	0.12[.005]	05031	5-192044-8	OBSOLETE	△17	
[.09]	[.020]	A	--	[.062]	7	UNPL	13	0.12[.005]	05023	5-192044-7	OBSOLETE	△19	
[.09]	[.015]	A	--	[.062]	8	3-2	12	0.12[.005]	05042	5-192044-6			
[.09]	[.015]	A	--	[.062]	8	1-2	12	0.12[.005]	05059	5-192044-5	OBSOLETE		
[.09]	[.015]	A	--	[.062]	8	--	12	0.12[.005]	05056	5-192044-4			
[.09]	[.015]	A	--	[.062]	8	UNPL	12	0.12[.005]	05104	5-192044-3	OBSOLETE		
[.09]	[.016]	A	--	[.062]	8	UNPL	12	0.12[.005]	05105	5-192044-2			
[.09]	[.016]	A	--	[.062]	7	6-2	12	0.12[.005]	05106	5-192044-1			



STYLE C (STRIP)

B

B

192044

A

A

THIS DRAWING IS A CONTROLLED DOCUMENT.

DWN RA JAYNE 12-13/91	STE TE Connectivity Ltd.
CHK J.TURNER 08-04-93	
APVD S. SIEGRIST 8/5/93	NAME
PRODUCT SPEC	CONTACT BAND,FEMALE
APPLICATION SPEC	
WEIGHT	SIZE CAGE CODE DRAWING NO RESTRICTED TO
	A2 00779 C-192044
CUSTOMER DRAWING	SCALE NTS SHEET 2 OF 2 REV T

Mouser Electronics

Authorized Distributor

Click to View Pricing, Inventory, Delivery & Lifecycle Information:

[TE Connectivity:](#)

[5-192044-6](#)