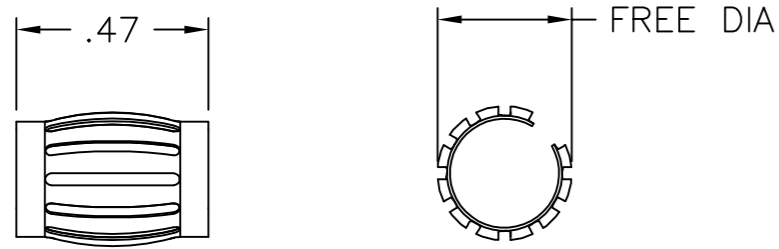
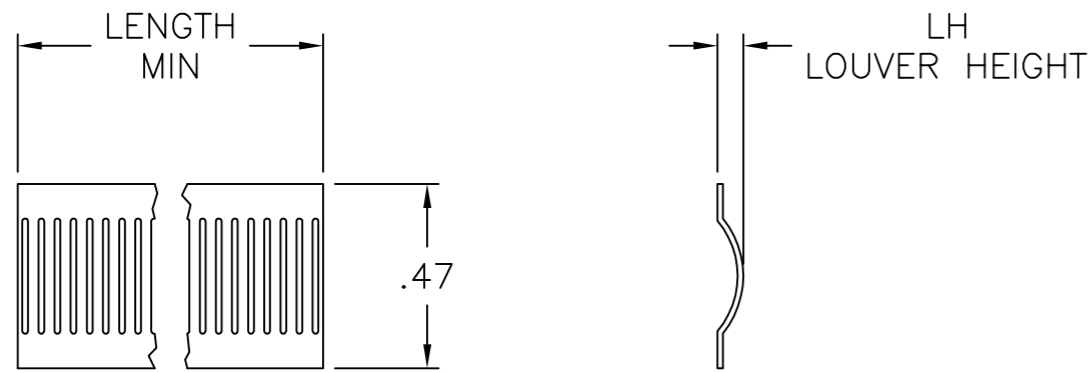


THIS DRAWING IS UNPUBLISHED. RELEASED FOR PUBLICATION
 © COPYRIGHT - By - ALL RIGHTS RESERVED.

REVISIONS					
P	LTR	DESCRIPTION	DATE	DWN	APVD
M		REVISED PER ECO-16-001979	15FEB2016	NK	MZ
N		REVISED PER ECO-17-013721	16NOV2017	RS	MZ



STYLE B
(MALE)



STYLE C
(STRIP)

- 1 FINISH: SILVER PLATE 200uIN MIN THICK.
- 2 FINISH: NICKEL PLATE 40uIN MIN THICK.
- 3 FINISH: GOLD PLATE 10uIN MIN THICK.
- 4 FINISH: NICKEL PLATE 50uIN MIN THICK.
- 5 FINISH: NICKEL PLATE 100uIN MIN THICK.
- 6 NOT USED.
- 7 NOT USED.
- 8 NOT USED.
- 9 NOT USED.
- 10 NOT USED.
- 11 PLATING NOTES ARE TO BE INTERPRETED AS FOLLOWS, 6-8 AS 6 OVER 8.
- 12 MATERIAL: CDA172, BeCu.
- 13 MATERIAL: STAINLESS STEEL.

- 14 PRODUCT IS SOLD BY THE FOOT.
- 15 FINISH: PREPLATED SILVER 200 uIN MIN, OVER NICKEL .040 uIN MIN.
- 16 REELED PRODUCT.
- 17 PRELIMINARY PART NUMBER.
- 18 OBSOLETE PART NUMBER.
- 19 OBSOLETEPARTS: OBSOLETE CIS STREAMLINING PER D.RENAUD/D.SINISI

REF	DESCRIPTION	PLATING	NUM LOUV	MAT'L THK	REF	PART NUMBER
18	NOT AVAILABLE	--	--	--	03088	4-192039-5
18	NOT AVAILABLE	--	--	--	03087	4-192039-4
18	NOT AVAILABLE	--	--	--	03051	4-192039-3
18	NOT AVAILABLE	--	--	--	03050	4-192039-2
19	B [.036] [.58] 12 16.51 [.650] UNPL 43 0.20 [.008] 03119 4-192039-1					
19	B [.032] [.58] 12 14.22 [.560] 1-2 43 0.15 [.006] 03124 4-192039-0					
18	NOT AVAILABLE	--	--	--	--	3-192039-9
19	B [.038] [.46] 12 12.7 [.500] -- 34 0.20 [.008] 03122 3-192039-8					
19	B [.038] [.46] 12 12.7 [.500] 1-2 34 0.20 [.008] 03121 3-192039-7					
19	B [.038] [.46] 12 12.7 [.500] UNPL 34 0.20 [.008] 03048 3-192039-6					
19	B [.032] [.46] 12 12.7 [.500] 1-2 -- 0.15 [.006] 03129 3-192039-5					
19	B [.032] [.46] 12 12.7 [.500] UNPL 34 0.15 [.006] 03110 3-192039-4					
19	B [.034] [.33] 12 9.52 [.375] 1-2 24 0.20 [.008] 03148 3-192039-3					
19	OBSOLETE				03042	3-192039-2
18	SUPERSEDED BY 2-192039-7	--	--	--	03041	3-192039-1
19	B [.036] [.31] 12 7.9 [.311] 3-2 21 0.20 [.008] 03082 3-192039-0					
19	B [.036] [.31] 12 7.9 [.311] 1-2 21 0.20 [.008] 03036 2-192039-9					
19	OBSOLETE				03035	2-192039-8
19	B [.036] [.31] 12 7.9 [.311] UNPL 21 0.20 [.008] 03066 2-192039-7					
19	B [.036] [.30] 12 7.37 [.291] UNPL 20 0.20 [.008] 03120 2-192039-6					
18	NOT AVAILABLE	--	--	--	03034	2-192039-5
18	NOT AVAILABLE	--	--	--	03030	2-192039-4
18	B [.036] [.30] 12 6.3 [.248] 1-2 17 0.20 [.008] 03027 2-192039-3					
18	B [.036] [.30] 12 6.3 [.248] UNPL 17 0.20 [.008] 03026 2-192039-2					
19	B [.033] [.27] 12 6.3 [.248] 1-2 16 0.20 [.008] 03140 2-192039-1					
19	B [.033] [.27] 12 6.3 [.248] UNPL 16 0.20 [.008] 03139 2-192039-0					
19	B [.036] [.25] 12 6.0 [.236] 3-2 15 0.20 [.008] 03024 1-192039-9					
19	B [.034] [.20] 12 4.0 [.157] 4 9 0.20 [.008] 03017 1-192039-8					
19	B [.034] [.20] 12 4.0 [.157] 3-2 9 0.20 [.008] 03016 1-192039-7					
19	B [.034] [.20] 12 4.0 [.157] UNPL 9 0.20 [.008] 03071 1-192039-6					
19	OBSOLETE				03015	1-192039-5
19	B [.032] [.20] 12 4.0 [.157] 3-2 9 0.15 [.006] 03014 1-192039-4					
19	B [.032] [.20] 12 4.0 [.157] 4 9 0.15 [.006] 03128 1-192039-3					
19	B [.032] [.20] 12 4.0 [.157] UNPL 9 0.15 [.006] 03073 1-192039-2					
19	B [.020] [.20] 13 4.0 [.157] UNPL 9 0.12 [.005] 03091 1-192039-1					
14	C [.038] 12 -- 3-2 -- 0.20 [.008] 03115 1-192039-0					
18	NOT AVAILABLE	12	--	--	--	192039-9
19	14 C [.038] 12 -- 1-2 -- 0.20 [.008] 03116 192039-8					
19	14 C [.038] 12 -- UNPL -- 0.20 [.008] 03078 192039-7					
19	14 C [.034] 12 -- 3-2 -- 0.15 [.006] 03003 192039-6					
14	C [.034] 12 -- 1-2 -- 0.15 [.006] 03094 192039-5					
18	14 C [.034] 12 -- UNPL -- 0.15 [.006] 03057 192039-4					
19	14 C [.020] 13 -- UNPL -- 0.12 [.005] 03138 192039-3					
19	OBSOLETE				03079	192039-2
18	NOT AVAILABLE	--	--	--	03067	192039-1


STYLE	LH	FREE DIA	MAT'L (NOTE)	MATING DIA REF	PLATING	NUM LOUV	MAT'L THK	REF	PART NUMBER
THIS DRAWING IS A CONTROLLED DOCUMENT.									
DIMENSIONS: INCHES					TOLERANCES UNLESS OTHERWISE SPECIFIED:				
MATERIAL: SEE TABLE					FINISH: -				
0 PLC ± -					1 PLC ± -				
2 PLC ± .02					3 PLC ± .010				
4 PLC ± -					ANGLES ± -				
WEIGHT: -					SIZE: A2				
CUSTOMER DRAWING					CAGE CODE: 00779				
SCALE: NTS					DRAWING NO: C=192039				
SHEET: 1 of 2					RESTRICTED TO: -				
REV: N					TE Connectivity				

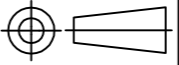
THIS DRAWING IS UNPUBLISHED. RELEASED FOR PUBLICATION
 © COPYRIGHT - By - ALL RIGHTS RESERVED.

REVISIONS				
P	LTR	DESCRIPTION	DATE	APVD
-	-	SEE SHEET 1	-	-

19	OBSOLETE	B	[.038]	[.46]	12	12.7[.500]	3-2	34	0.20[.008]	--	5-192039-9
16	OBSOLETE	C	[.034]	--	12	--	15	--	.006	--	5-192039-8
		B	[.036]	[.25]	12	6.0[.236]	UNPL	15	.008	--	5-192039-7
		B	[.036]	[.33]	12	9.52[.375]	UNPL	24	.008	--	5-192039-6
		B	[.032]	[.58]	12	14.22[.560]	UNPL	43	.006	--	5-192039-5
		B	[.033]	[.20]	12	4.0[.157]	5	9	0.20[.008]	--	5-192039-4
		B			12	6.0[.236]	5	16	0.20[.008]	--	5-192039-3
SUPERSEDED BY 2-192039-0											
		B	[.036]	[1.71]	12	44.78[1.763]	3-2	130	0.15[.006]	--	5-192039-1
19	OBSOLETE	B	[.034]	[3.50]	12	98.55[3.880]	UNPL	92	0.15[.006]	03126	5-192039-0
		NOT AVAILABLE			--		--	--		03084	4-192039-9
		B	[.036]	[1.91]	12	50.8[2.000]	UNPL	145	0.20[.008]	03096	4-192039-8
		B	[.036]	[1.71]	12	44.78[1.763]	1-2	130	0.15[.006]	03125	4-192039-7
	OBSOLETE	B	[.036]	[1.71]	12	44.78[1.763]	UNPL	130	0.15[.006]	03145	4-192039-6
		STYLE	LH	FREE DIA	MATL (NOTE)	MATING ϕ REF	PLATING	NUM LOUV	MAT'L THK	REF	PART NO.

THIS DRAWING IS A CONTROLLED DOCUMENT.

DWN RA JAYNE 11-04-91	 TE Connectivity CONTACT BAND, LAIIS, MALE
CHK RA JAYNE 11-04-91	
APVD -	
NAME	
PRODUCT SPEC	SIZE CAGE CODE DRAWING NO RESTRICTED TO
APPLICATION SPEC	A2 00779 C=192039
WEIGHT -	SCALE NTS SHEET 2 of 2 REV N
CUSTOMER DRAWING	

DIMENSIONS: INCHES	TOLERANCES UNLESS OTHERWISE SPECIFIED:
	0 PLC ± -
	1 PLC ± -
	2 PLC ± .02
	3 PLC ± .010
	4 PLC ± -
	ANGLES ± -
MATERIAL SEE TABLE	FINISH SEE TABLE

192039

B

A

Mouser Electronics

Authorized Distributor

Click to View Pricing, Inventory, Delivery & Lifecycle Information:

[TE Connectivity:](#)

[192039-5](#)