

REVISIONS

P	LTR	DESCRIPTION	DATE	DWN	APVD
	BI	REVISED (ECR-16-005149)	15. JAN. '16	SM	HG

CODING-A (P/N: 1897725-2)

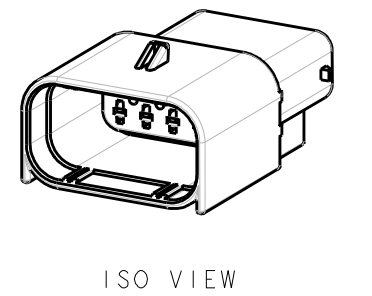
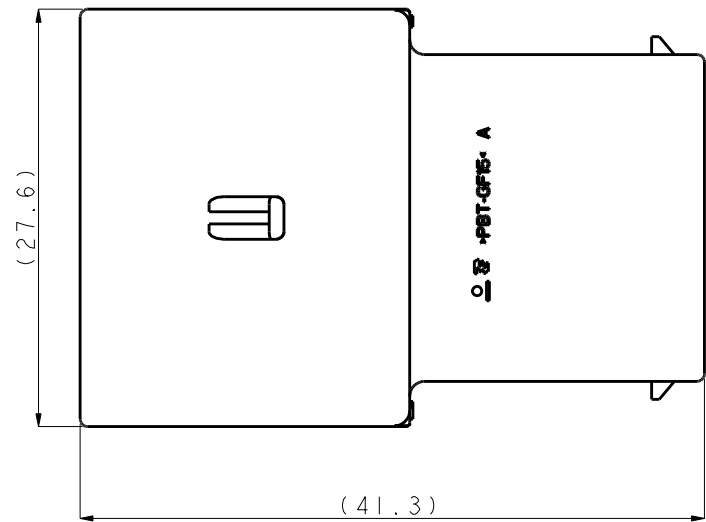
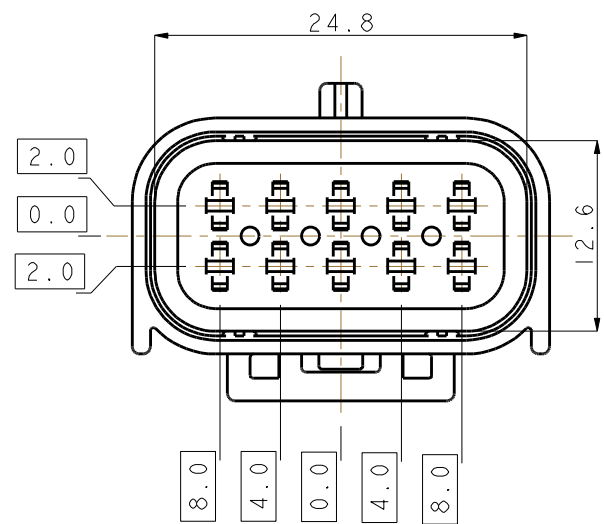


TABLE 1. APPLICABLE TAB CONTACT.

TAB	PART NO.	WIRE RANGE (mm ²)	INSULATION DIA. (mm) (FLR)
MCP 1.5	969028	0.2-0.5	1.2-1.6
	964269	0.5-1.0	1.4-2.1
	△ 1703278	1.25-1.5	1.4-2.1

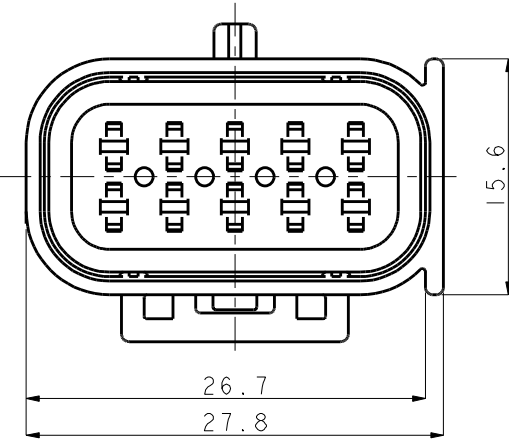
TABLE 2. APPLICABLE SINGLE WIRE SEALS.

WIRE RANGE (mm ²)	INSULATION DIA. (mm)	COLOR	PART NO.
0.35-0.50	1.2~1.6	RED	964971-1
0.50-0.75	1.4~1.9	GRAY	963530-1
1.0	1.9~2.1	YELLOW	964972-1
△ 1.25	1.9~2.4	ORANGE	2112323-1

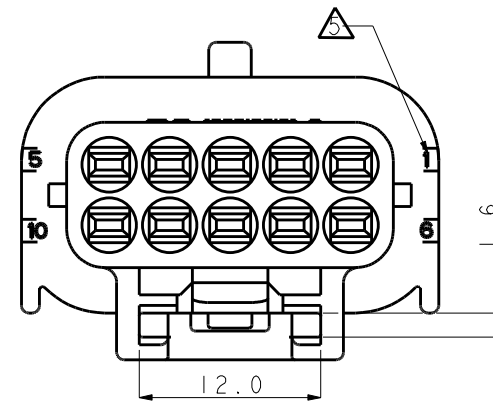
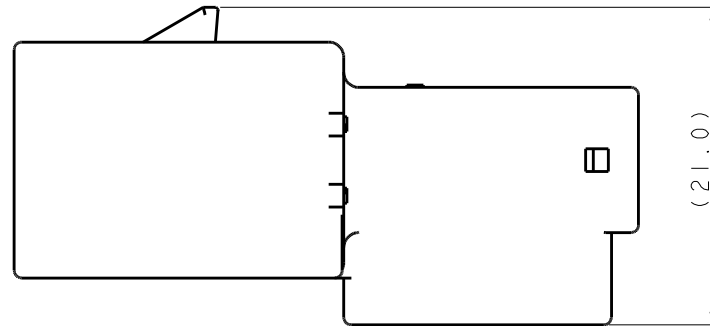
TABLE 3. APPLICABLE DEAD END PLUG

APPLICABLE ASS'Y P/N	△ DEAD END PLUG	COLOR	PART NO.
1-1897726-2	DEAD END PLUG	WHITE	963531-1
		NATURAL	1394132-1
2-1897726-3	DEAD END PLUG	NATURAL	1394132-1

BI CODING-B (P/N: 1-1897725-3)



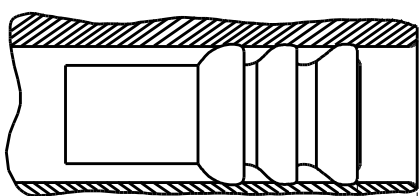
Missing dimension see P/N: 1897726-2



NOTE ;

- GENERAL TOLERANCE : ±0.3, ±3.0°
- APPLICABLE TAB CONTACT : SEE TABLE 1.
- APPLICABLE SINGLE WIRE SEAL : SEE TABLE 2.
- THE MATING REC. HSG ASS'Y P/N : 1897726-2 / 1-1897726-2 / 2-1897726-3
CIRCUIT NO. TAB CONTACT (P/N: 1703278) AND SINGLE WIRE SEALS (P/N: 2112323-1) SHOULD BE USED TO ONLY MATING REC. HSG ASS'Y (P/N: 1-1897726-2).
DEAD END PLUG INSERTION DEPTH: 1.5mm ^{+1.5}/₀
- APPLICABLE COVER P/N : 2219418-2

B △ DEAD END PLUG INSERTION DEPTH: 1.5mm ^{+1.5}/₀



SCALE 5:1

1-1897725-3	TAB HSG	PBT-GF15	GRAY
1897725-2	TAB HSG	PBT-GF15	BLACK
PART NO.	DESCRIPTION	MATERIAL	COLOR

THIS DRAWING IS A CONTROLLED DOCUMENT.

DIMENSIONS: mm

TOLERANCES UNLESS OTHERWISE SPECIFIED:	
0 PLC	±
1 PLC	±0.5
2 PLC	±0.13
3 PLC	±0.013
4 PLC	±0.0001
ANGLES	±

MATERIAL FINISH

DWN SM LEE
 CHK KT LIM
 APVD HG CHO
 PRODUCT SPEC
 APPLICATION SPEC
 WEIGHT
 CUSTOMER DRAWING

STE TE Connectivity

NAME: MCPI.5 SEALED 10P TAB HSG

SIZE: A300779 CAGE CODE: C-1897725 DRAWING NO: 1897725 RESTRICTED TO: -

SCALE: 1:1 SHEET: 1 OF 1 REV: BI

Mouser Electronics

Authorized Distributor

Click to View Pricing, Inventory, Delivery & Lifecycle Information:

[TE Connectivity:](#)

[1897725-2](#)