

NUMBER 179862

METRIC

PRINT DIST

ALL DIMENSIONS IN MM. DO NOT SCALE PRINT

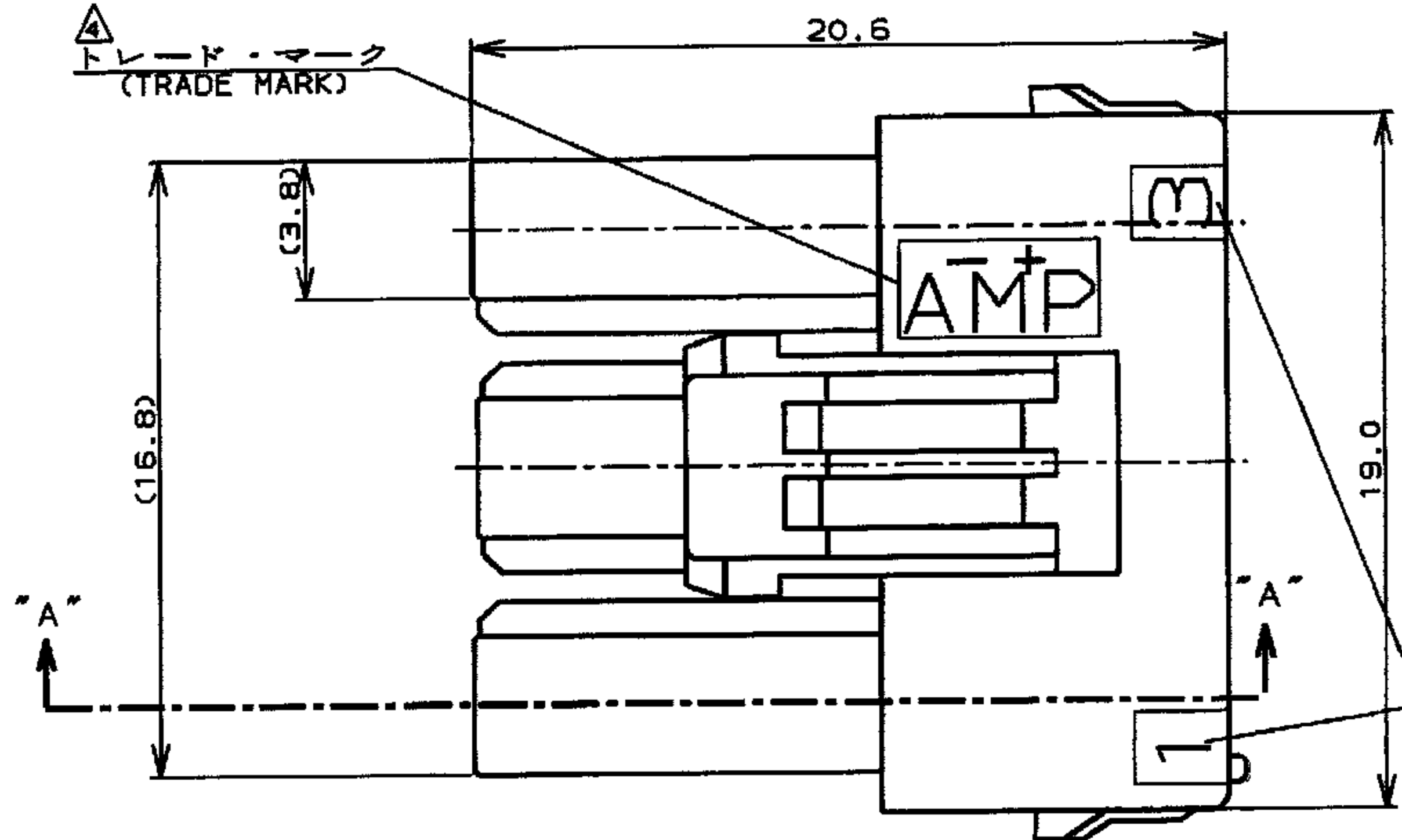
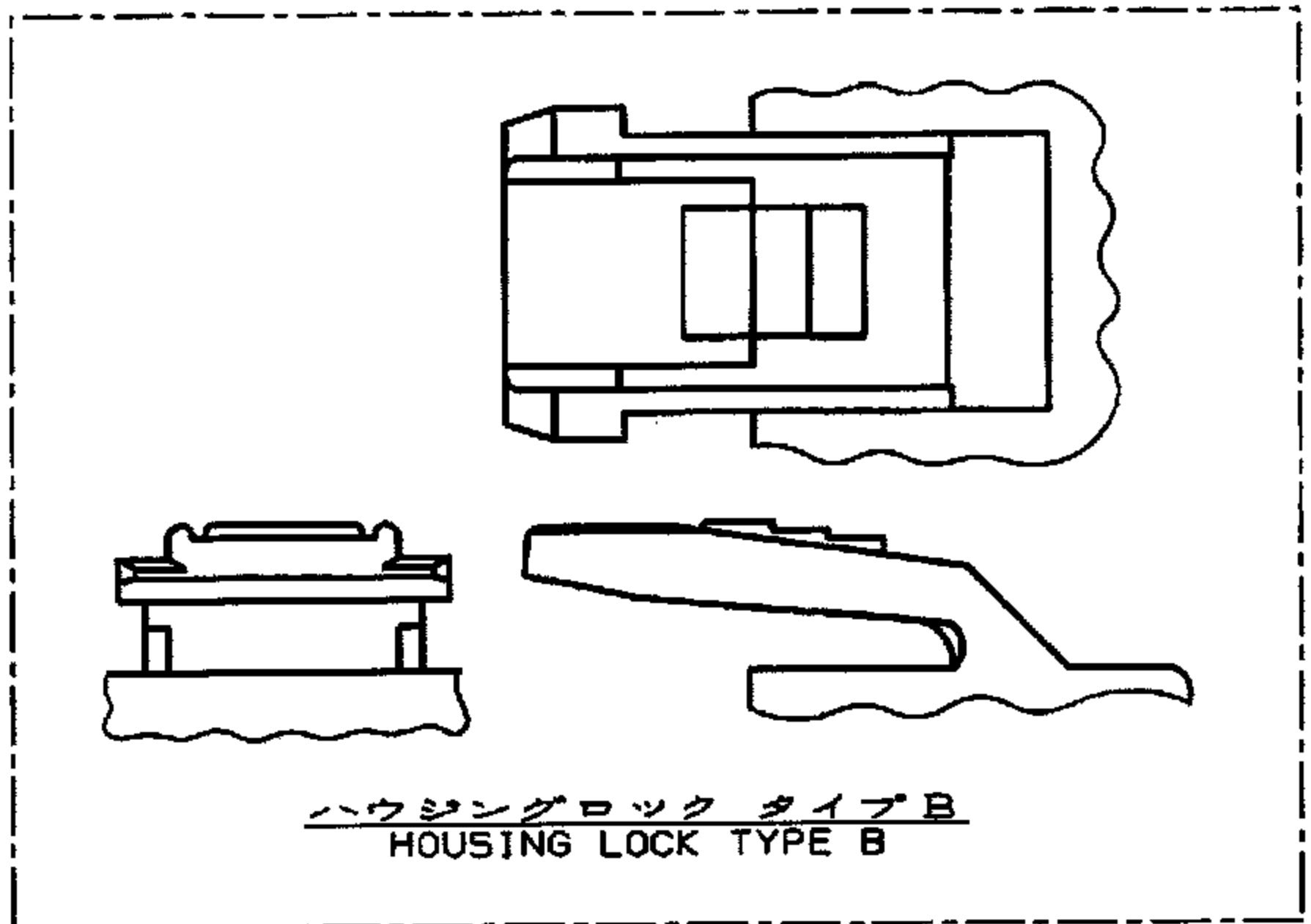
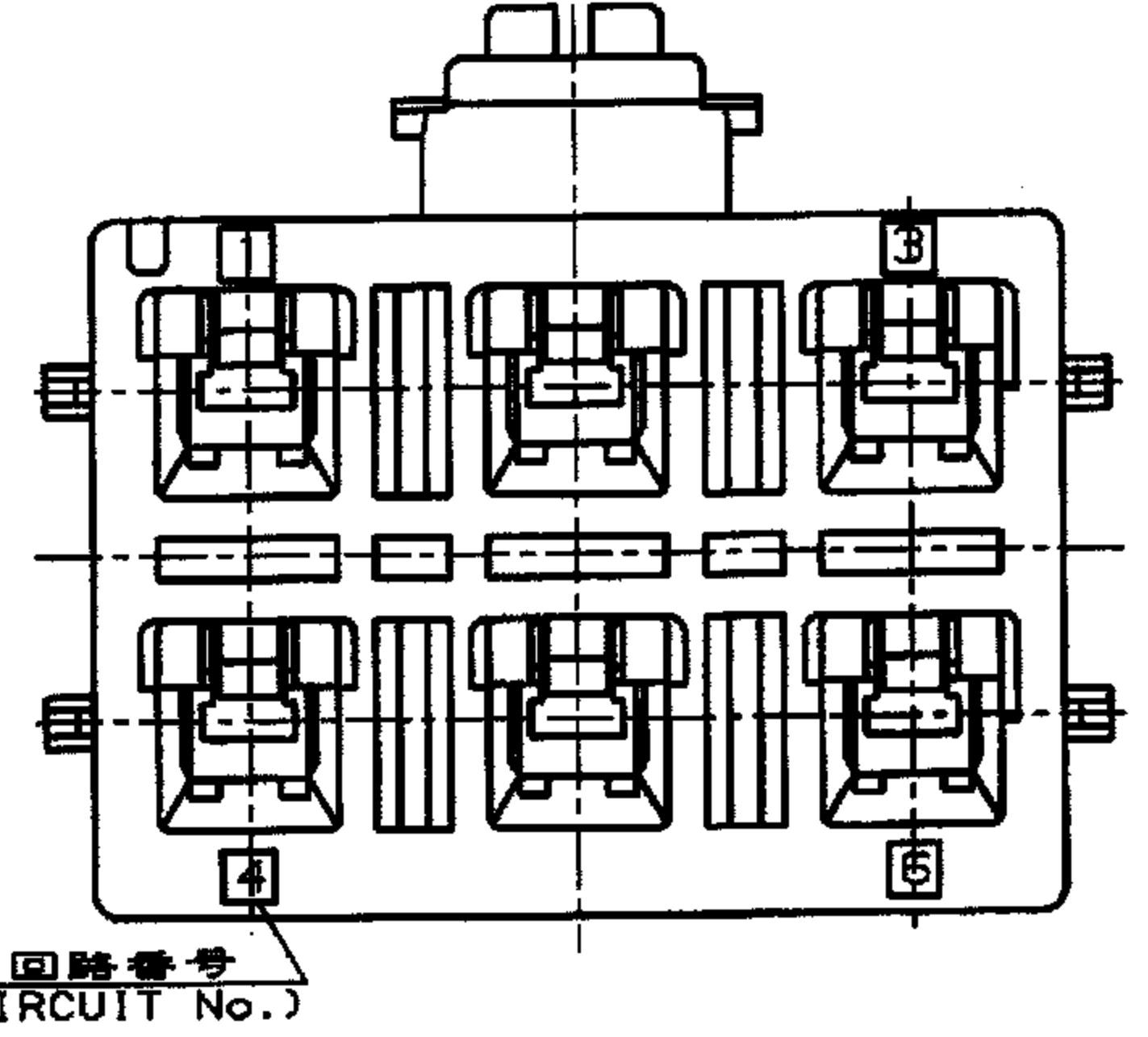
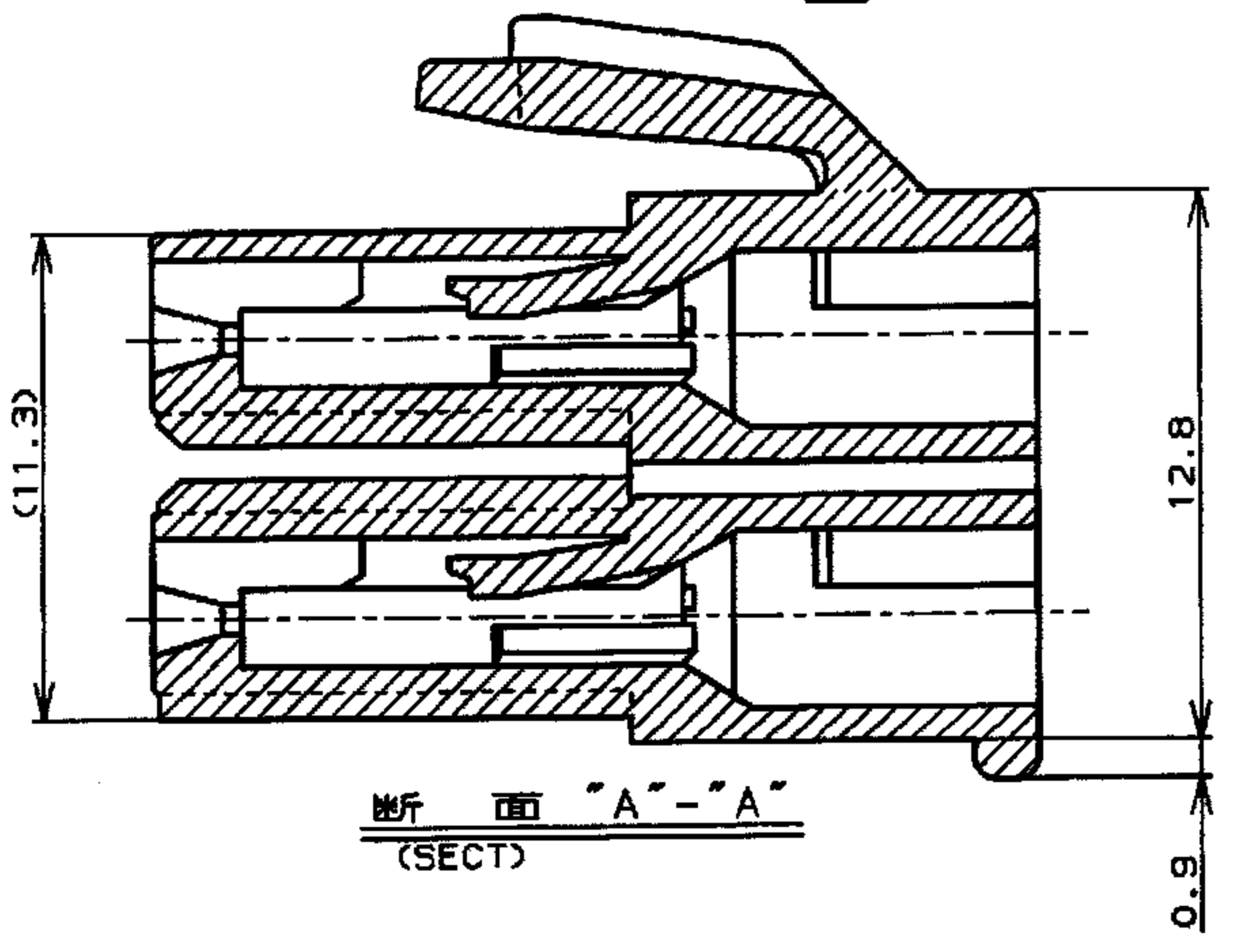
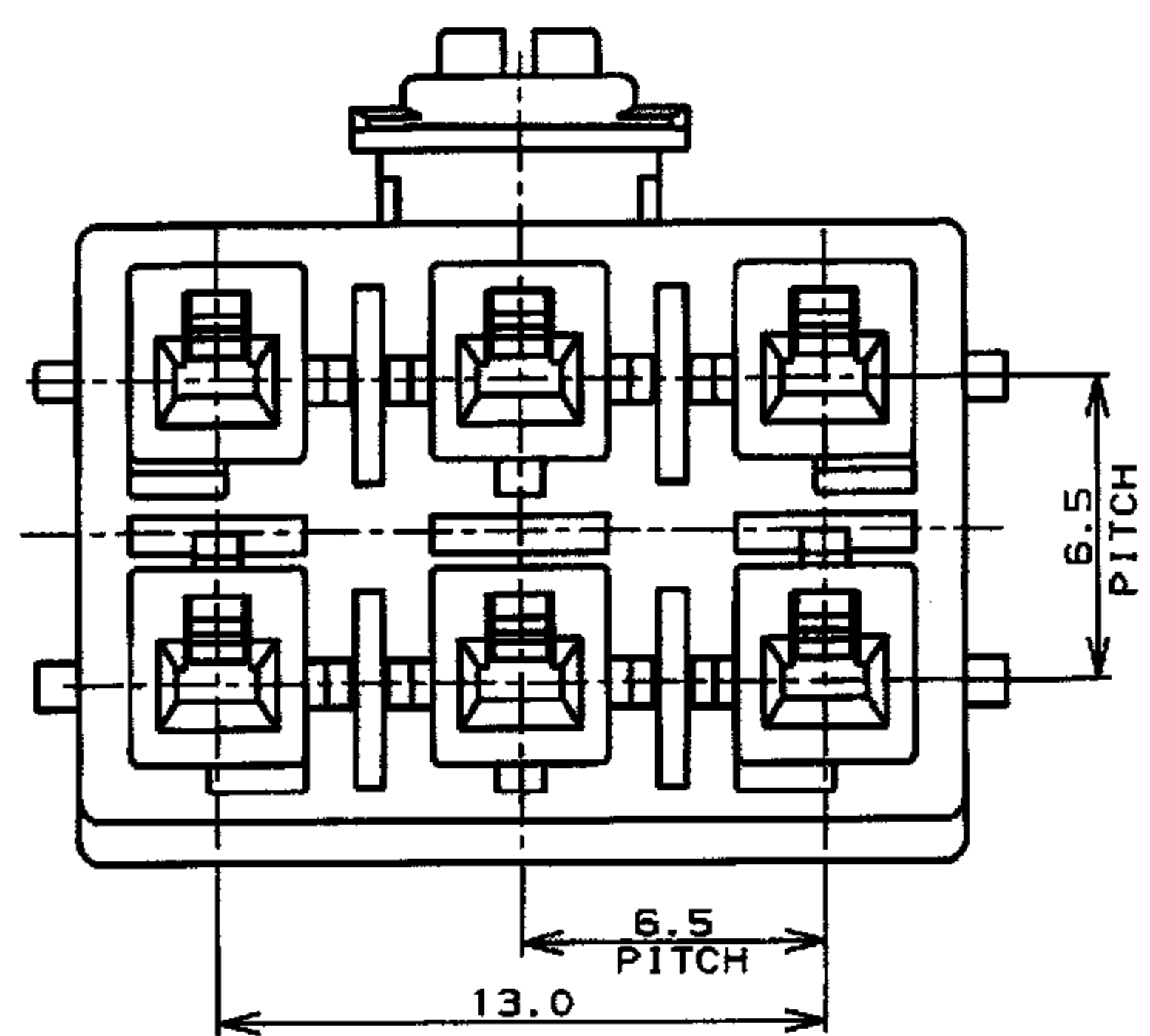


表1 (TABLE 1)

トレードマーク (TRADE MARK)	生産場所 (MANUFACTURING PLACE)
—AMP OR AMP	日本 (JAPAN)
—+AMP OR AMP	中国 (CHINA(PRC))
*AMP OR AMP	韓国 (KOREA)



本図 ハウジングロック タイプ A
AS SHOWN HOUSING LOCK TYPE A

- NOTES:
1. APPLICABLE CONTACT P/N
REC CONTACT: 177915-[X*20-#16AWG]
: 177914-[X*26-#22AWG]
 2. MATING CONN, P/N
HDR ASS'Y: 179849-[]
 3. PRODUCT SPEC : 108-5410
 4. SEE TABLE 1
 5. ALL PARTS MEET RTI ELECTRICAL RATING OF 105C ACCORDING TO UL 1977
 6. PART 5-179862-1 COMPLY WITH GLOW WIRE REQUIREMENT FOR PARTS OF NON-METALLIC MATERIAL SUPPORTING A CURRENT-CARRYING CONNECTION DETAILED IN IEC 60335-1, SECTION 30(GWT).

"B"	色 (COLOR)	Pos.	P/N
"B"	青 (BLUE)	6	2-179862-6
	黄 (YELLOW)	6	2-179862-4
	自然色 (NATURAL) < 白色 > (WHITE)	6	2-179862-1
"A"	自然色 (NATURAL)	6	5-179862-1
	青 (BLUE)	6	179862-6
	黄 (YELLOW)	6	179862-4
HOUSING LOCK	自然色 (NATURAL) < 白色 > (WHITE)	6	179862-1
	HOUSING COLOR	Pos.	P/N

<p>D2 REVISED ECR-13-012146 A. Z. F. M. 14AUG '13</p> <p>D1 REVISED ECR-12-013854 A. Z. F. M. 02AUG '12</p> <p>D REVISED FJ00-1369-01 M. M. S. 11JUL '91</p> <p>C REVISED FJ00-0953-98 T. Y. M. S. 11JUL '91</p> <p>B REVISED FJ00-5378-96 N. Y. Y. K. 24SEP '96</p> <p>A REVISED FJ00-3123-95 N. Y. Y. K. 30AUG '95</p> <p>O RELEASED FJ00-1170-94 N. Y. Y. K. 8SEP '94</p>				<p>材料 (MATERIAL) 6/6 ナイロン (UL94V-0) 6/6 NYLON (UL94V-0)</p> <p>仕上 (FINISH) ———</p>		<p>AMP Tyco Electronics AMP K.K. Kawasaki, Japan</p>	
<p>RELEASED 6/6 ナイロン (UL94V-0) 6/6 NYLON (UL94V-0)</p> <p>DR. N. YAMASAKI 8. SEP '94</p> <p>CHK. Y. KASHIWA 8. SEP '94</p>		<p>名称 (NAME) AMP POWER DOUBLE LOCK CONN. 6.5mmピッチ プラグハウジング (2列タイプ)</p> <p>AMP POWER DOUBLE LOCK CONN. 6.5mm PITCH PLUG HOUSING 6 Pos (DBL ROW)</p>					
<p>一般公差 10以下: ±0.2 10以上-30以下: ±0.25 30以上-100以下: ±0.3 角 度: ±3°</p>		<p>SIZE LOC 番号 (No.) A3 J C-179862</p> <p>尺度 (SCALE) REV. SHEET D2 1 OF 1</p>					

CUSTOMER DRAWING

Mouser Electronics

Authorized Distributor

Click to View Pricing, Inventory, Delivery & Lifecycle Information:

[TE Connectivity:](#)

[2-179862-1](#)