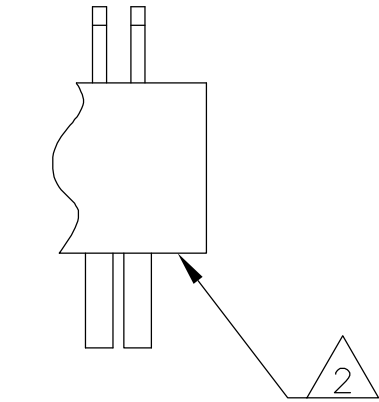


SIZE	A DIM	C DIM	(L DIM)
04	.0375	.115	(.075)
09	.100	.240	(.200)
15	.175	.390	(.350)

5	25	.300	.640	(.600)
5	37	.450	.940	(.900)
5	51	.625	1.290	(1.250)



DETAIL A
POSITION "T" SHOWN FOR
REFERENCE

- T POSITION 1
- U POSITION 2
- V POSITION 3
- W POSITION 1, AND SECOND TO LAST POSITION
- Y POSITION 1, AND THIRD TO LAST POSITION
- Z POSITION 2, AND THIRD TO LAST POSITION

2 POLARIZING POSITIONS, SEE DETAIL A

- 1 INSULATOR MATERIAL: LIQUID CRYSTAL POLYMER (LCP) PER MIL-M-24519 OR PER ASTM D5138
- 2 OPTIONAL POLARIZATION POSITION SHOWN FOR REFERENCE ONLY. IF POLARIZATION GUIDE POST(S) ARE REQUIRED ON THE MATING PLUG, THE CORRESPONDING LOCATION MUST BE SPECIFIED IN THE NANONICS RECEPTACLE PART NUMBER. THE CONTACT CAVITY IS LEFT EMPTY FOR ACCEPTANCE OF THE PLUG GUIDE POST.
- 3 SMT LEADS ARE BeCu, GOLD PLATED PER MIL-G-45204 OVER NICKEL PLATE PER SAE-AMS-QQ-N-290
- 4 TERMINATION CODE: T2
- 5 WHEN ORDERING THESE SIZES, FIRST CONSULT TYCO ELECTRONICS/NANONICS FOR ADDITIONAL INFORMATION
- 6 DUE TO THE SMALL AREA OF THIS STRIP RECEPTACLE, CONSIDER SURFACE MOUNTING THE STRIP PLUG (1589451)
- 7 THIS DRAWING PREVIOUSLY IDENTIFIED AS NANONICS N10138/042

THIS DRAWING IS A CONTROLLED DOCUMENT.		DWN C SCHOLL 21 JUN 05	Tyco Electronics Corporation	
DIMENSIONS: INCHES		CHK H ABEE 21 JUN 05	Harrisburg, PA 17105	
TOLERANCES UNLESS OTHERWISE SPECIFIED:		APVD -	NAME	
0 PLC ± -		PRODUCT SPEC	RECEPTACLE ASSEMBLY, UNSHROUDED STRIP, HORIZONTAL SMT, GOLD PLATED LEADS, PLASTIC	
1 PLC ± -		APPLICATION SPEC	SIZE CAGE CODE DRAWING NO	
2 PLC ± .010		WEIGHT -	A2 00779 C=1589924	
3 PLC ± .005		CUSTOMER DRAWING	RESTRICTED TO	
4 PLC ± -		SCALE 8:1	SHEET 1 OF 2	
ANGLES ± 1°		REV A		
FINISH				
SEE NOTES				

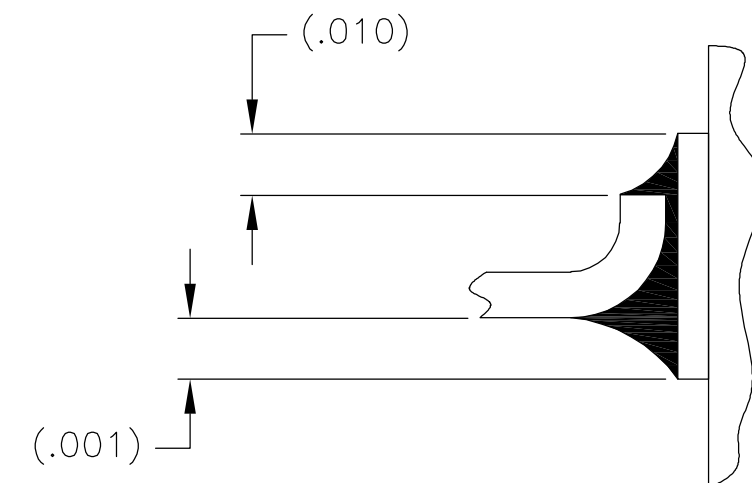




Diagram illustrating the side view cross-section of the assembly. The assembly consists of a substrate (1) with a top surface (2) and a bottom surface (3). A top layer (4) is applied to the top surface (2). A bottom layer (5) is applied to the bottom surface (3). A central layer (6) is positioned between the top layer (4) and the bottom layer (5). The thickness of the central layer (6) is indicated as (.231). The bottom layer (5) is labeled as "OPTIONAL (.005) THICK ADHESIVE".

SIZE 09 SHOWN FOR REFERENCE

THIS DRAWING IS A CONTROLLED DOCUMENT.		DWN C SCHOLL 21 JUN 05		 Tyco Electronics Corporation Harrisburg, PA 17105	
		CHK H ABE 21 JUN 05			
DIMENSIONS: INCHES 		TOLERANCES UNLESS OTHERWISE SPECIFIED: 0 PLC ± — 1 PLC ± — 2 PLC ± .010 3 PLC ± .005 4 PLC ± — ANGLES ± 1°		NAME RECEPTACLE ASSEMBLY, UNSHROUDED STRIP, HORIZONTAL SMT, GOLD PLATED LEADS, PLASTIC	
MATERIAL SEE NOTES		FINISH SEE NOTES		SIZE A2	
		WEIGHT —		CAGE CODE 00779	
		CUSTOMER DRAWING		DRAWING NO C-1589924	
				RESTRICTED TO —	
				SCALE 8:1 SHEET 2 OF 2 REV A	

Mouser Electronics

Authorized Distributor

Click to View Pricing, Inventory, Delivery & Lifecycle Information:

[TE Connectivity:](#)

[1589924-1](#)