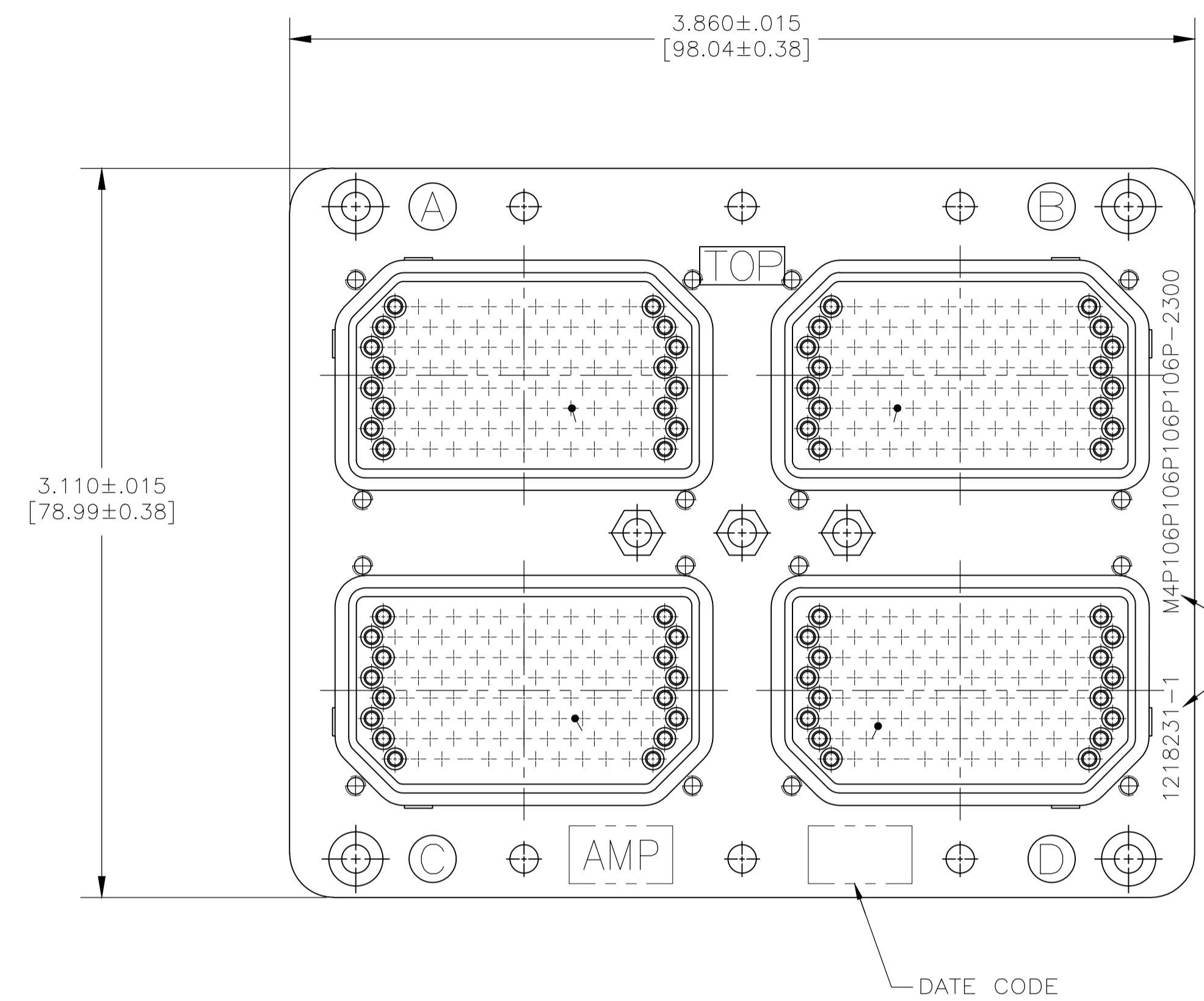


REVISIONS					
P	LTR	DESCRIPTION	DATE	DNW	APVD
A		RELEASED	3-12-20	CT	RL

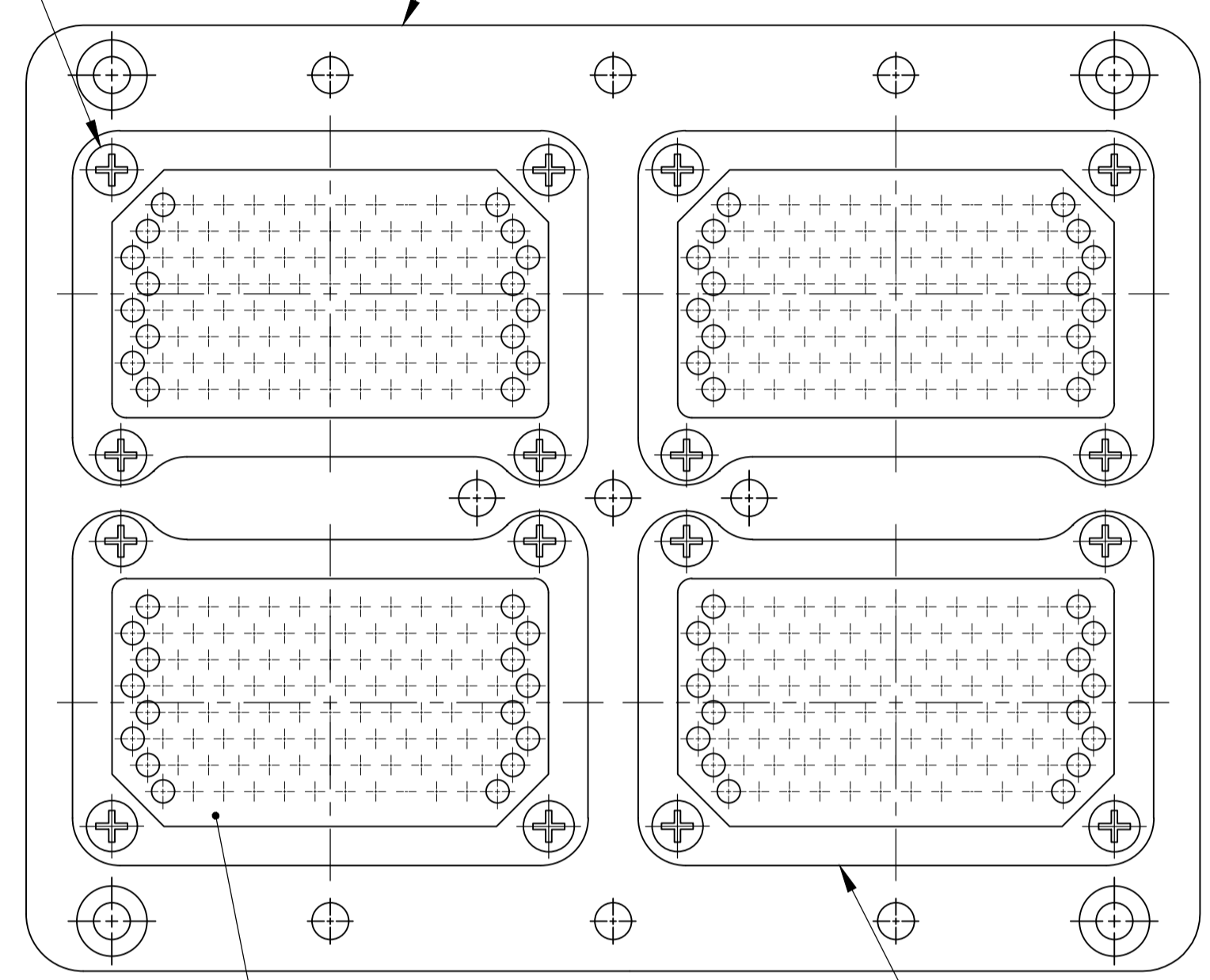
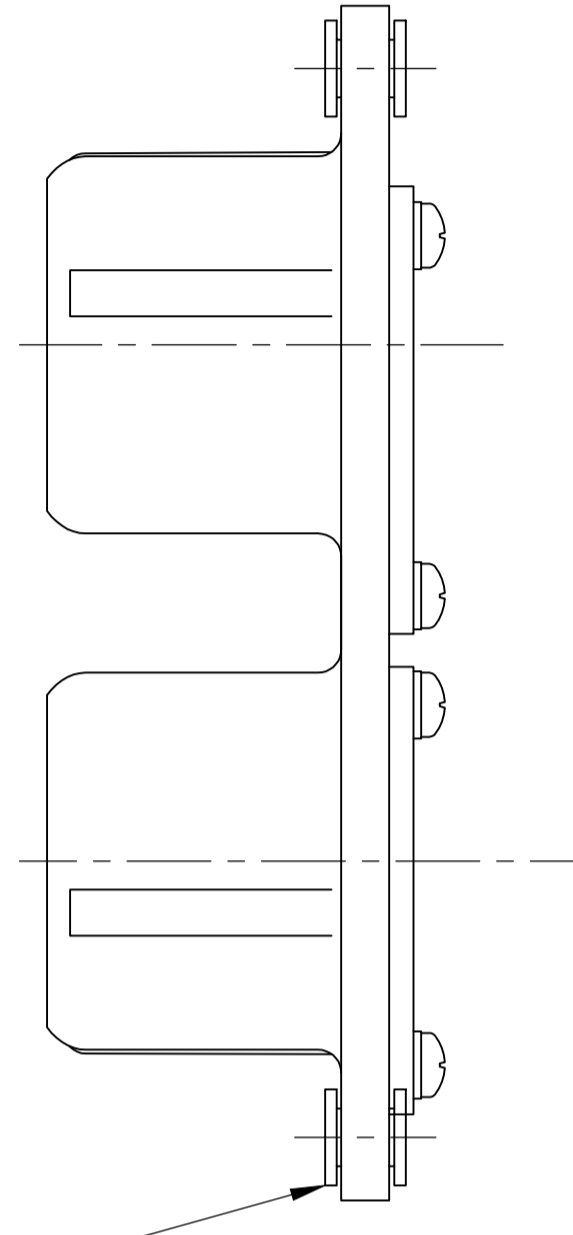


TE PART NO. & DESCRIPTIVE P/N MARKED IN THIS AREA

FLOAT BUSHING; QTY = 4  
I.D. DIA. .118-.115 [3.00-2.92]

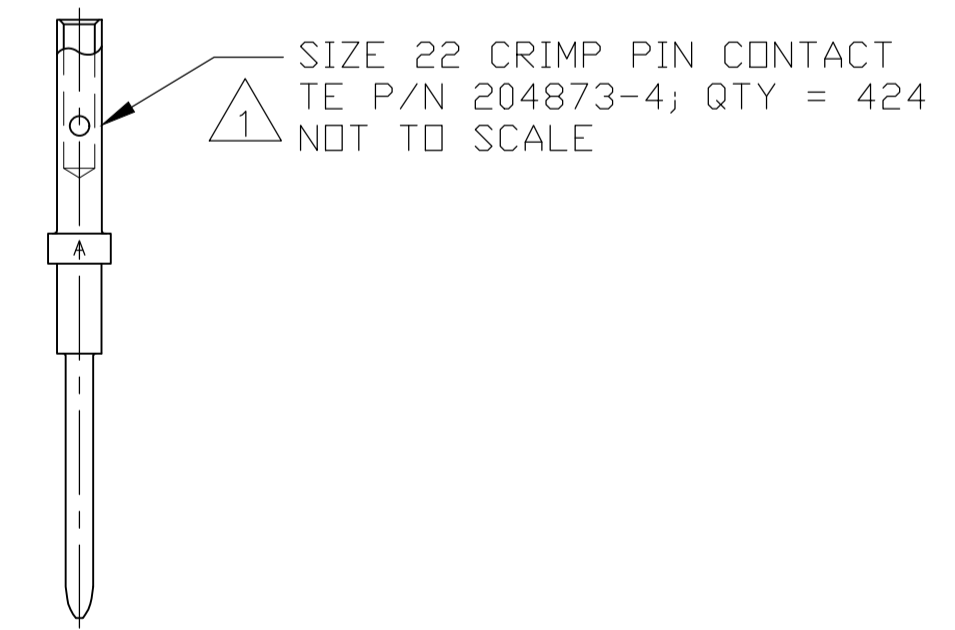
SCREWS & LOCKWASHERS  
MAT'L: STAINLESS STEEL  
FINISH: PASSIVATED  
QTY = 16

SHELL  
MAT'L: ALUMINUM ALLOY  
FINISH: CADMIUM PLATED, YELLOW CHROMATE



106 POSITION PIN INSERT; QTY = 4  
MAT'L: EPOXY MOLDING COMPOUND

RETAINER PLATE; QTY = 4  
MAT'L: ALUMINUM ALLOY  
FINISH: BLUE ANODIZED



SIZE 22 CRIMP PIN CONTACT  
TE P/N 204873-4; QTY = 424  
NOT TO SCALE

CONTACTS ARE PACKAGED SEPARATELY AND SHIPPED WITH CONNECTOR.

"00"	1218231-1
KEYING POSITION	PART NUMBER

THIS DRAWING IS A CONTROLLED DOCUMENT.		DIN C.C.THOMAS 3-12-20	TE Connectivity	
DIMENSIONS: INCHES		CHK R.LACUESTA 3-12-20	NAME ASSY, ARINC 404, M4P106P106P106P-2300 (200)	
TOLERANCES UNLESS OTHERWISE SPECIFIED:		APVD R.LACUESTA 3-12-20	PRODUCT SPEC	
0. PLC	± .005	APPLICATION SPEC		
1. PLC	± .002	SIZE		
2. PLC	± .001	CAGE CODE		
3. PLC	± .0005	DRAWING NO.		
4. PLC	± .0002	RESTRICTED TO		
ANGLES	± .0001	WEIGHT		
FINISH		0.000000		
MATERIAL		A1 00779 C=1218231		
		CUSTOMER DRAWING		
		SCALE 2:1 SHEET 1 OF 1 REV A		

# Mouser Electronics

Authorized Distributor

Click to View Pricing, Inventory, Delivery & Lifecycle Information:

[TE Connectivity:](#)

[1218231-1](#)