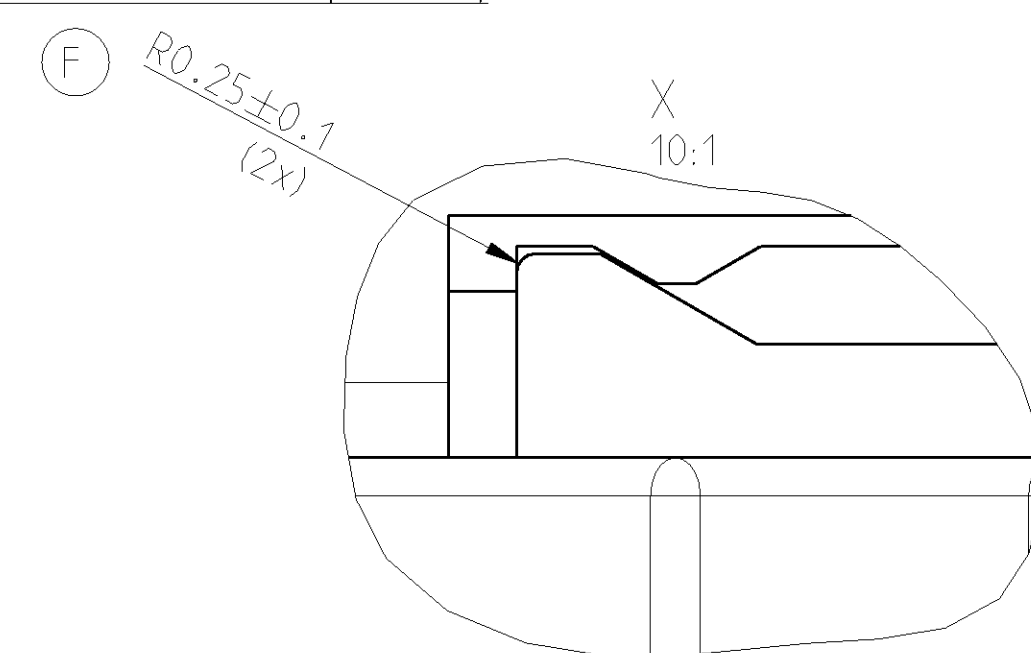
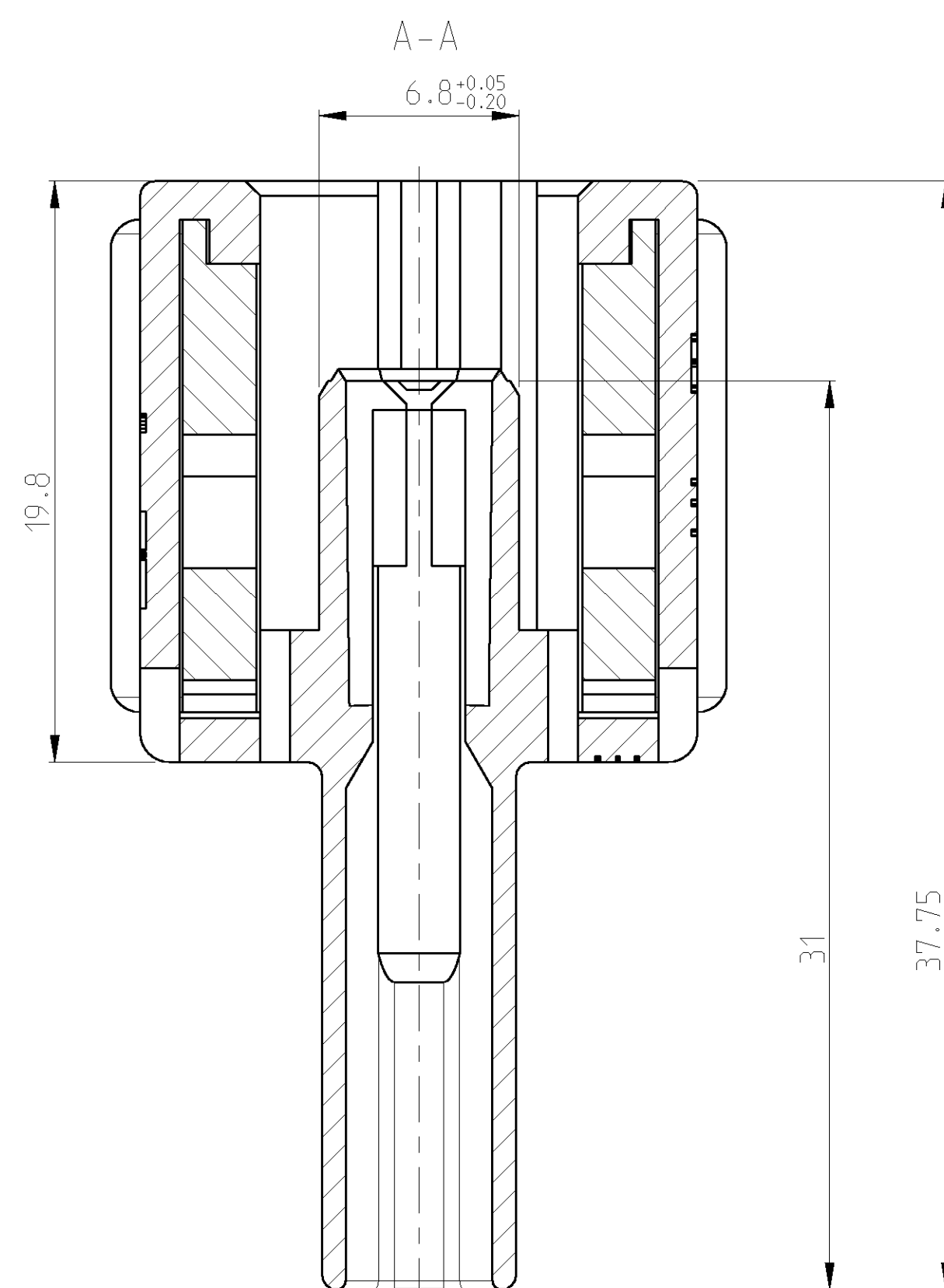
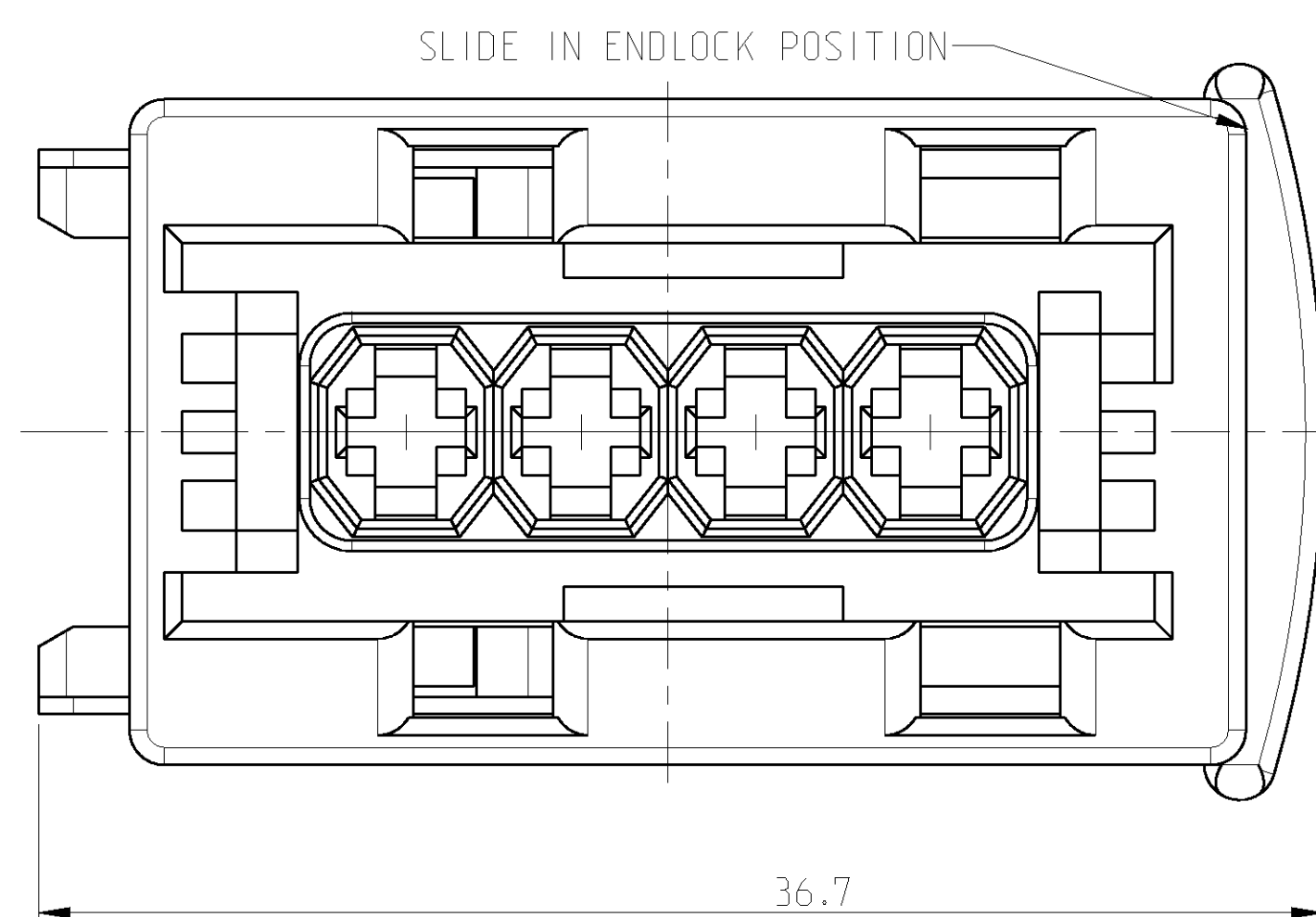
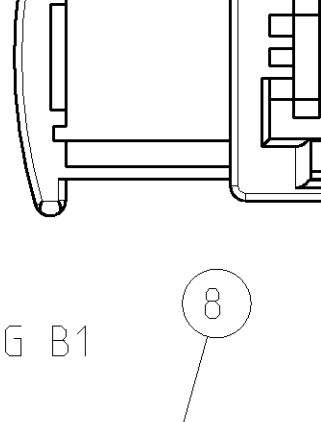


PROJECT-NO.:	H	SEE PCN, EGA0-0728-03-3	25MAY2004	M.D.	T.K.
A89-52071	H1	SEE E-06-019882	23AUG06	C.A.	T.K.



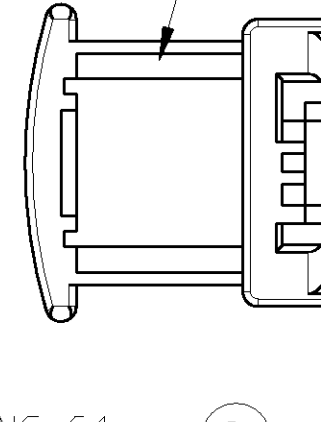
CODING A1



Technical drawing of the CODING A1 connector. It shows a side view of a rectangular connector with a handle on the left. The handle is labeled with a circled '8'. The main body has a central port area with four circular ports. A label '1' points to the top edge of the main body. Below the drawing is the scale '2:1'.

2:1

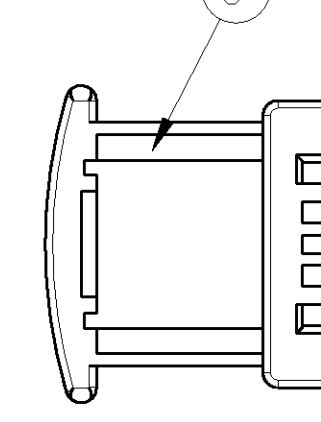
CODING B1



Technical drawing of the CODING B1 connector. It shows a side view of a rectangular connector with a handle on the left. The handle is labeled with a circled '8'. The main body has a central port area with four circular ports. A label '2' points to the top edge of the main body. Below the drawing is the scale '2:1'.

2:1

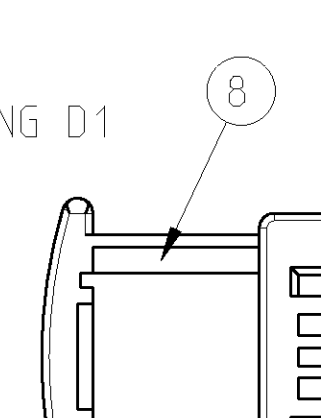
CODING C1



Technical drawing of the CODING C1 connector. It shows a side view of a rectangular connector with a handle on the left. The handle is labeled with a circled '8'. The main body has a central port area with four circular ports. A label '4' points to the top edge of the main body, and a label '3' points to the right edge. Below the drawing is the scale '2:1'.

2:1

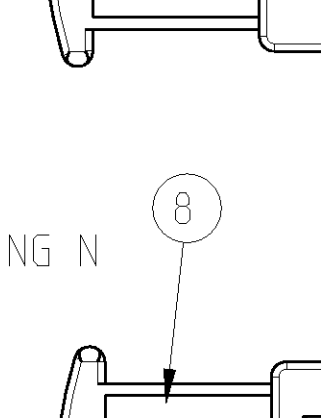
CODING D1



Technical drawing of the CODING D1 connector. It shows a side view of a rectangular connector with a handle on the left. The handle is labeled with a circled '8'. The main body has a central port area with four circular ports. A label '6' points to the top edge of the main body, and a label '5' points to the right edge. Below the drawing is the scale '2:1'.

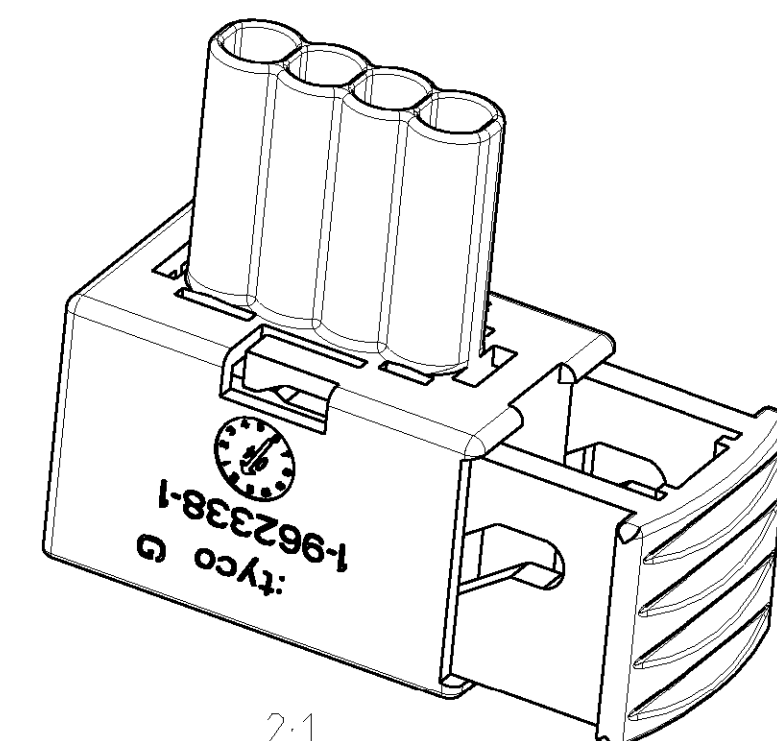
2:1


CODING N



Technical drawing of the CODING N connector. It shows a side view of a rectangular connector with a handle on the left. The handle is labeled with a circled '8'. The main body has a central port area with four circular ports. A label '7' points to the top edge of the main body. Below the drawing is the scale '2:1'.

2:1



10% REFERENCE DIMENSIONS FOR INFORMATION ONLY. DIMENSIONS SHOULD BE CONTACTED FOR THE LATEST REVISION.		DWN: 25MAY2004 CHG: 25MAY2004 CHG: T. Kilian		tyco Electronics tyco Electronics AMP GmbH D - 64625 Bensheim	
DIMENSIONS: mm		TOLERANCES UNLESS OTHERWISE SPECIFIED: mm		NAME: JUNIOR POWER THERM HOUSING, 4 POS. -	
		1 PLC ± 0.3 1 PLC ± 0.3 2 PLC ± 0.3 3 PLC \pm 4 PLC \pm ANGLES \pm		PRODUCT SPEC: 108-18102 APPLICATION SPEC: 114-1875-1 WEIGHT: -	
MATERIAL: -		FINISH: -		SIZE: A CASE CODE: 00779 DRAWING NO: C=963207 RESTRICTED TO: -	
CUSTOMER DRAWING					
				SCALE: 5:1 SHEET: 1 of 1 REV: H	

Mouser Electronics

Authorized Distributor

Click to View Pricing, Inventory, Delivery & Lifecycle Information:

[TE Connectivity:](#)

[3-963207-1](#)