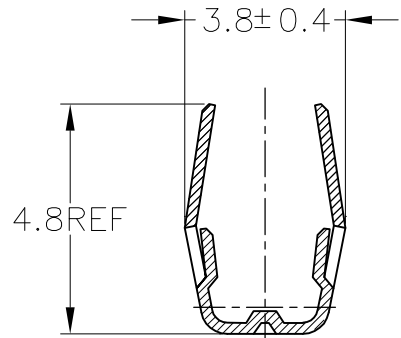
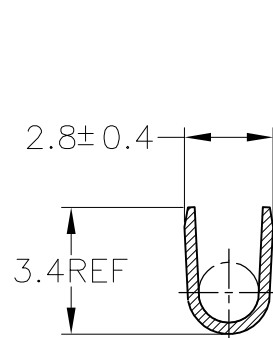
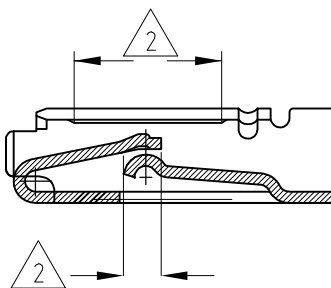
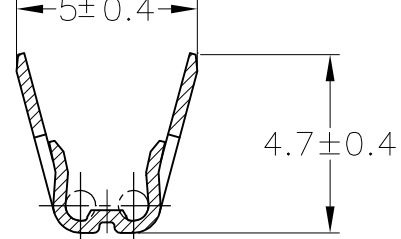
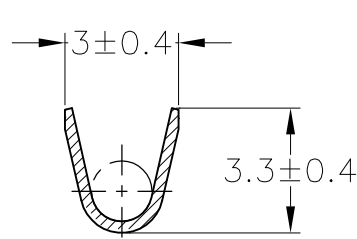
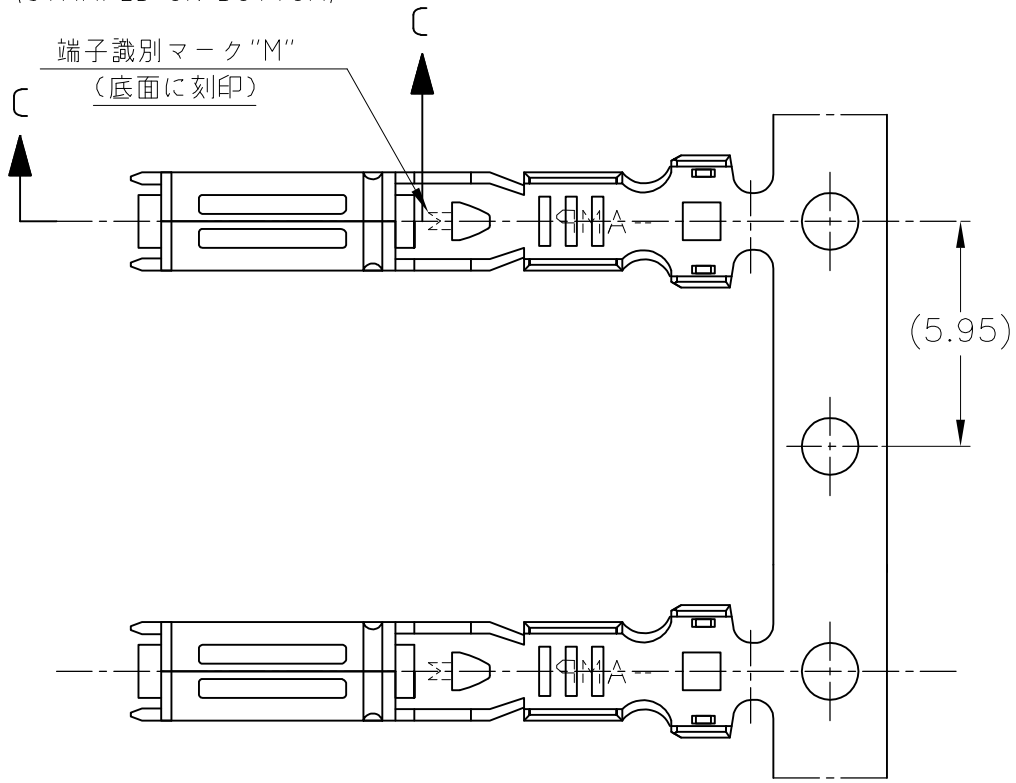
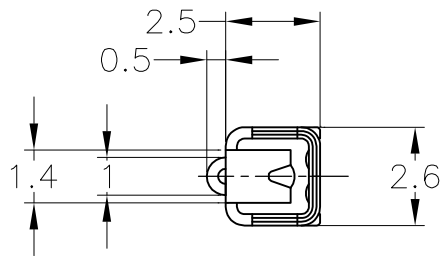


WIRE RANGE ID MARK  
("M" SIZE MARK)  
(STAMPED ON BOTTOM)

端子識別マーク "M"  
(底面に刻印)

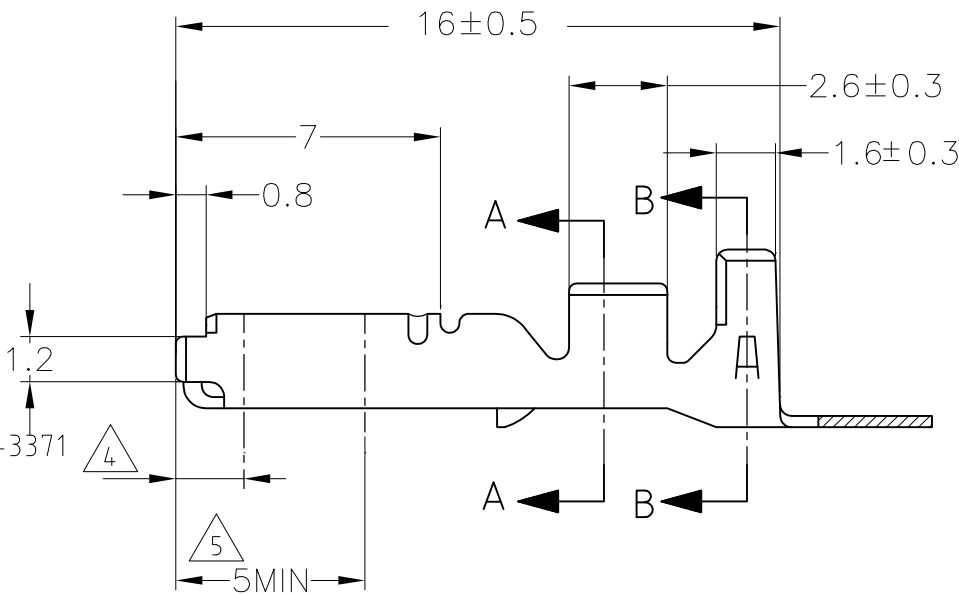
REVISIONS 変更					
P	LTR	DESCRIPTION		DATE	APVD
	F1	REVISED	ECR-19-018615	17JUL2020	DM HK



断面 C-C  
SECT C-C

断面 A-A  
SECT A-A  
(175027のみ適用)  
(ONLY 175027)

断面 B-B  
SECT B-B  
(175027のみ適用)  
(ONLY 175027)



- 1. 製品規格 ; 108-5216, 108-5231, 108-5264, 108-3371
- 2. 部分金めっき
- 3. 取付適用規格 ; 114-5091
- 4. 識別用金めっき (全周)
- 5. 部分金めっき (両側のみ)


- 1. SPEC; 108-5216, 108-5231, 108-5264, 108-3371
- 2. SELECTIVE GOLD PLATING
- 3. APPLICATION SPEC; 114-5091
- 4. GOLD PLATING FOR DISCERNMENT (ALL AROUND)
- 5. SELECTIVE GOLD PLATING (ONLY BOTH SIDES OF THE BOX)

TOLERANCE UNLESS OTHERWISE SPECIFIED: 一般公差	
0< x ≤ 10	: ±0.2
10< x ≤ 30	: ±0.25
30< x ≤ 100	: ±0.3
ANGLE	: ±3°

THIS DRAWING IS A CONTROLLED DOCUMENT.	
DIMENSIONS: 単位: 耗 mm	TOLERANCES UNLESS OTHERWISE SPECIFIED: 一般公差
	0 PLC ± -
	1 PLC ± -
	2 PLC ± -
	3 PLC ± -
	4 PLC ± -
MATERIAL 材料	FINISH 仕上
SEE TABLE	SEE TABLE

WIRE RANGE 0.5~1.25mm <sup>2</sup> (AWG#20-#16)	INSULATION DIA. 2~2.6mmφ
THIS DRAWING IS A CONTROLLED DOCUMENT.	
DWN M.SUGAWARA	12MAY06
CHK T.SHINOHARA	12MAY06
APVD K.BETSUI	12MAY06
PRODUCT SPEC 製品規格	SEE NOTE 1
APPLICATION SPEC 取付適用規格	SEE NOTE 3
WEIGHT	-
CUSTOMER DRAWING	

	部分金めっき 5.2 SELECTIVE GOLD	黄銅 板厚0.3 BRASS t0.3	1-173631-2
SEE DRAWING 173631-8			173631-8
175027-7	部分金めっき 4.2 SELECTIVE GOLD	リン青銅 板厚0.3 PHOS BRO. t0.3	173631-7
175027-6	錫めっき済み PRE-TINNED	銅合金 板厚0.3 COPPER ALLOY t0.3	173631-6
175027-2	部分金めっき 4.2 SELECTIVE GOLD	黄銅 板厚0.3 BRASS t0.3	173631-2
175027-1	錫めっき済み PRE-TINNED	黄銅 板厚0.3 BRASS t0.3	173631-1
バラ端子型番 L/P NUMBER	仕上 FINISH	材料 MATERIAL	型番 PART NUMBER

				TE Connectivity			
NAME 名称							
070 SERIES RECEPTACLE CONTACT							
SIZE		CAGE CODE		DRAWING NO 番号		RESTRICTED TO	
A3		00779		C-173631		—	
				SCALE 尺度		SHEET	
				5:1		1 OF 1	
						REV	
						F1	

# Mouser Electronics

Authorized Distributor

Click to View Pricing, Inventory, Delivery & Lifecycle Information:

[TE Connectivity:](#)

[175027-1](#)