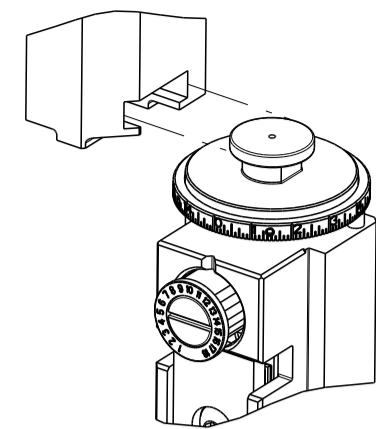


PART NUMBER	REVISION	DESCRIPTION	FEED TYPE
2836439-2	B	FINE CRIMP HEIGHT ADJUST	PNEUMATIC
7-2836439-2	B	PNEUMATIC AND CRIMP TOOLING KIT	PNEUMATIC
7-2836439-7	A	CRIMP TOOLING KIT	-

ATLANTIC VERSION TERMINATOR INTERFACE ADAPTER

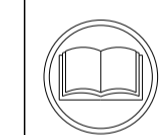


APPLICATOR DATA		
CRIMP	SIZE	TYPE
WIRE	3.25 mm [.128]	F
INSUL	3.55 mm [.140]	F

APPLICATOR INSTRUCTIONS  
408-35042

TERMINAL DATA: DELPHI TERMINAL DELPHI PACKARD CRIMP SPECIFICATION			
TERMINAL NAME: TAXI TERMINAL F 59			
WIRE STRIP LENGTH		INSULATION DIAMETER RANGE	
4.58-5.34 mm [.180-.210 IN]		Ø2.45-3.10 mm [.096-.122 IN]	
TERMINAL APPLICATION SPECIFICATION 06288808 PAGE 2 OF 6 Rev 2013-10-29			
TERMINALS APPLIED			
TE TERMINAL	DELPHI TERMINAL	TE TERMINAL	DELPHI TERMINAL
2303661-1	06288808	2303661-2	02973216

WIRE SIZE	CRIMP HEIGHT mm [INCH]	CRIMP HEIGHT REFERENCE SETTING
2.00mm2	1.65 +/- 0.05 [.065 +/- .002]	6.0
1.50mm2	1.63 +/- 0.05 [.064 +/- .002]	6.2
1.00mm2	1.60 +/- 0.05 [.063 +/- .002]	6.3



- 1 RECOMMENDED SPARE PARTS
- 2 REFER TO SUPPLIED INSTRUCTION SHEET FOR CLEANING, LUBRICATION AND STORAGE OF APPLICATOR.
- 3 APPLY PART NUMBER 2-23419-6 LOCTITE TO THREADS OF ITEM 242.
- 4 CRIMP HEIGHT REFERENCE SETTING WAS THE SETTING USED WHEN THE APPLICATOR WAS QUALIFIED AT THE FACTORY. ADJUSTMENT MAY BE NECESSARY WHEN RUNNING APPLICATOR IN THE FIELD.
- 5 TERMINAL LUBRICANT IS RECOMMENDED.
- 6. UNLESS SPECIFIED OTHERWISE TORQUE VALUES SHALL BE USED PER DOCUMENT, 101-35000.
- 7 POSITION ITEM 56 TO FEED TERMINAL FROM RECEPTACLE.

**\*WARNING**  
ON INSTALLATION, SET WIRE DISC TO CRIMP HEIGHT REFERENCE SETTING FOR LARGEST WIRE SIZE. CRIMP HEIGHT REFERENCE SETTINGS GREATER THAN THE VALUE SHOWN MAY CAUSE DAMAGE TO THE CRIMP TOOLING. REFER TO THE INSTRUCTION SHEET FOR PROPER SETUP AND ADJUSTMENTS.

ATLANTIC VERSION  
Shown on sheets 1 of 4 & 2 of 4  
(Pacific version shown on sheets 3 of 4 & 4 of 4)

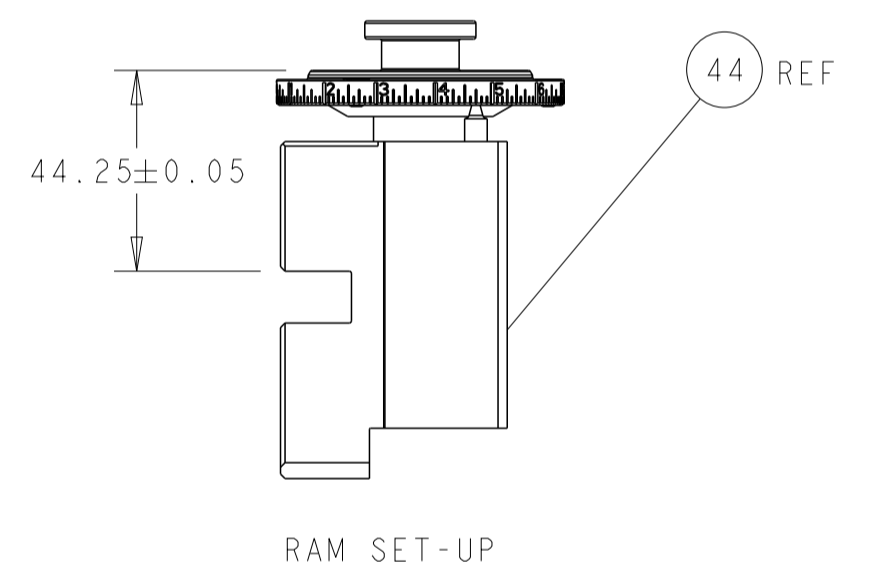
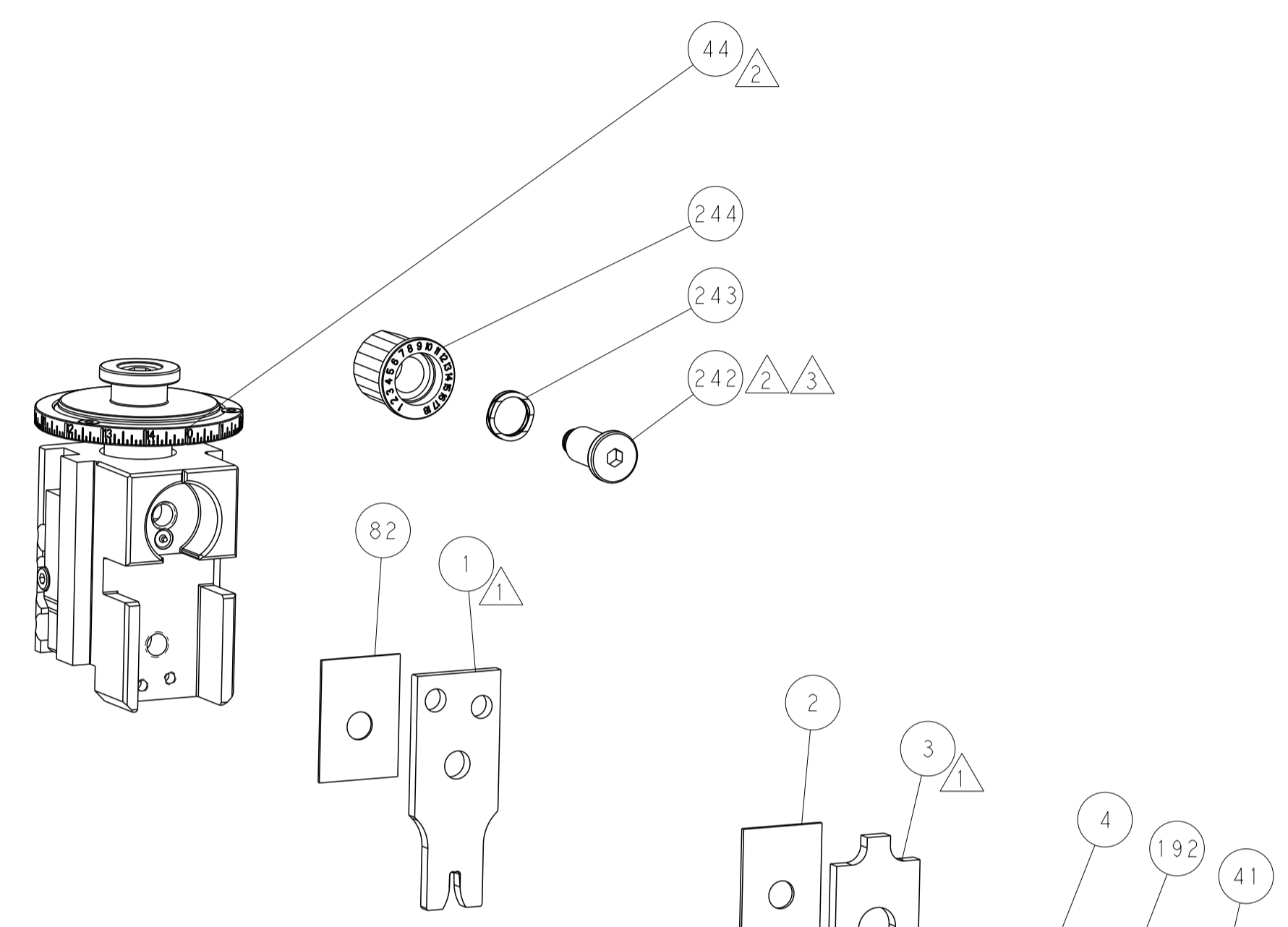
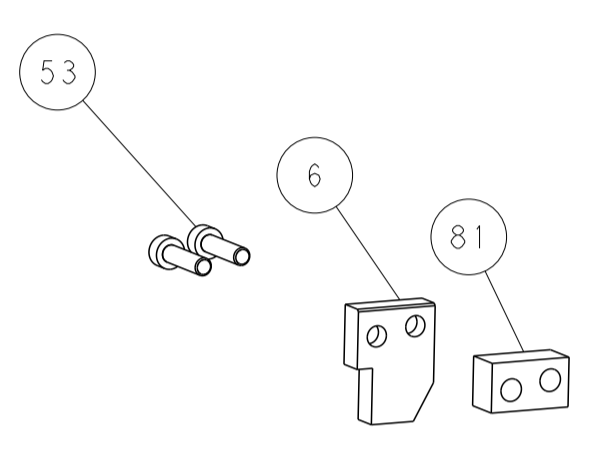
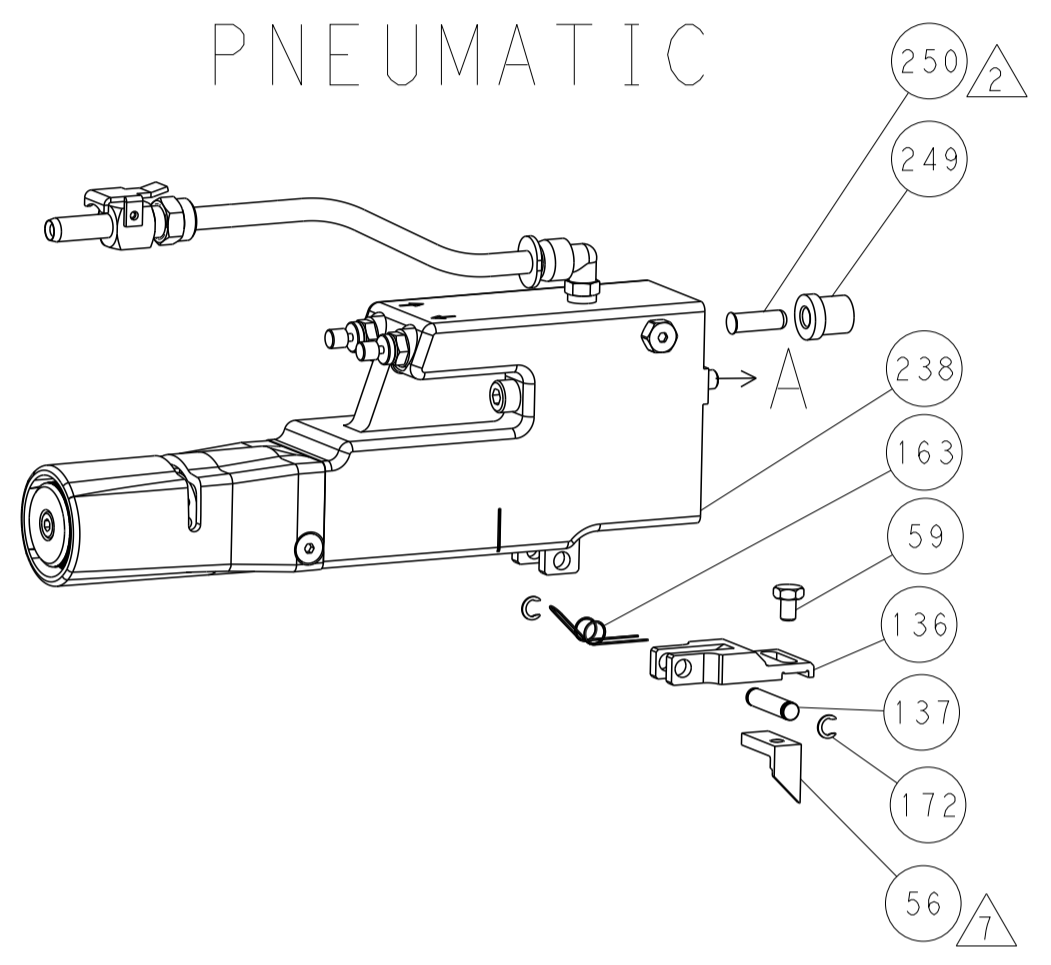
LOC	DIST	REVISIONS					
A	66	P	LTN	DESCRIPTION	DATE	OWN	APVD
		A		RELEASED	02DEC2016	LG	TE
		B		ECR-18-017272	01NOV2018	TB	CT

-	1	1	2119640-1	PUSH ROD, AIR FEED	250	
-	1	1	1803259-1	BUSHING, FLANGED	249	
-	1	1	2119641-1	FEED CAM, AIR FEED	248	
-	1	1	2119082-4	CAM, SNAIL, INSULATION ADJUSTMENT	244	
-	1	1	2079764-1	WASHER, WAVE SPRING, CREST-TO-CREST	243	
3	-	1	2119083-1	RETAINER, INSULATION DIAL	242	
-	1	1	2063440-1	AIR FEED MODULE	238	
-	1	1	356885-5	STOP, SHEAR	237	
-	1	1	1-18028-0	WASHER, FLAT, REG M8	192	
-	2	2	21045-3	RING, RETAIN, EXTERN, 3/16 CRESCENT	172	
-	REF	REF	994970-2	COUNTER, MAGNETIC	164	
-	1	1	240638-1	SPRING, FEED FINGER	163	
-	1	1	3-23627-7	PIN, RETAIN, GRVD, 3/16 X .854	137	
-	1	1	2119799-1	HOLDER, FEED FINGER, AF	136	
-	1	1	1-22281-8	SPRING, COMPRESSION	121	
5	-	1	2119955-1	ASSY, LUBRICATOR, SIDE FEED	113	
-	1	1	2844908-1	SCREW, LOCKING	99	
-	1	1	2844907-1	POST, LOCKING	98	
-	1	1	1803258-1	FRONT STRIP GUIDE	96	
-	1	1	2168083-6	SCR, SKT HD CAP, RoHS, M5 X 6.5	93	
-	2	2	1-2168083-3	SCR, SKT HD CAP, RoHS, M3 X 16	85	
-	1	1	455888-6	SPACER, CRIMPER	82	
-	1	1	5-240641-1	SPACER	81	
-	1	1	1803607-1	DOCUMENTATION PACKAGE	71	
-	1	1	2119740-1	TAG, IDENTIFICATION	67	
-	2	2	2168078-1	SCREW, DRIVE, RH, RoHS, 2 x .188	66	
-	2	2	2-18032-5	SCR, SET, FLT PNT, M5 X 20.0	61	
-	1	1	2168083-2	SCR, SKT HD CAP, RoHS, M4 X 8.0	60	
-	1	1	5-18022-5	SCR, HEX HD CAP, M4 X 6.0	59	
7	-	1	1-1338683-0	FEED PAWL	56	
-	2	2	2168083-3	SCR, SKT HD CAP, RoHS, M4 X 12.0	54	
-	2	2	2168083-8	SCR, SKT HD CAP, RoHS, M4 X 16	53	
-	1	1	18023-9	SCR, SKT HD CAP M4 X 6.0	49	
-	1	1	1803583-9	APPLICATOR BASIC ASSEMBLY, SF	46	
-	1	1	1803515-1	RAM ASSEMBLY, SF ATLANTIC	44	
-	1	1	1803602-1	SCR, BHSC, RoHS (M8 X 25)	41	
-	2	2	2168083-1	SCR, SKT HD CAP, RoHS, M3 X 8.0	33	
-	1	1	2-2305692-3	PLATE, REAR STRIP GUIDE	29	
-	2	2	22281-8	SPRING, COMPRESSION	27	
-	1	1	356835-1	LEVER, DRAG RELEASE	26	
-	1	1	240792-3	DRAG, TERMINAL	25	
-	1	1	2-189124-4	GUIDE, FRONT STRIP	24	
-	1	1	980371-4	SCR, SKT HD SHLDR 5.0 DIA X 6.0	23	
-	1	1	2168083-2	SCR, SKT HD CAP, RoHS, M4 X 8.0	21	
-	1	1	1-18028-2	WASHER, FLAT, REG M4	20	
-	1	1	2119533-1	STRIPPER, SIDE FEED	19	
1	-	1	1673257-6	SHEAR, FLOATING	17	
-	2	2	1-2168083-1	SCR, SKT HD CAP, RoHS, M3 X 6	16	
1	-	1	1673256-5	PLATE, REAR SHEAR	15	
-	1	1	1673255-3	HOLDER, REAR SHEAR	14	
-	1	1	3-22280-3	SPRING, COMPRESSION	12	
-	-	-	-	-	10	
-	-	-	-	-	9	
1	1	2	1	3-1803252-7	ANVIL, COMBINATION	8
-	-	-	-	-	7	
-	1	1	1	2-690468-5	DEPRESSOR SHEAR, REAR	6
-	-	-	-	-	5	
-	1	1	1	6-238011-5	BLOCK, CRIMPER SPACER	4
1	1	2	1	8-1803187-9	CRIMPER, INSULATION F	3
-	1	1	1	1-455888-0	SPACER, CRIMPER	2
1	1	2	1	8-1633588-7	CRIMPER, WIRE	1

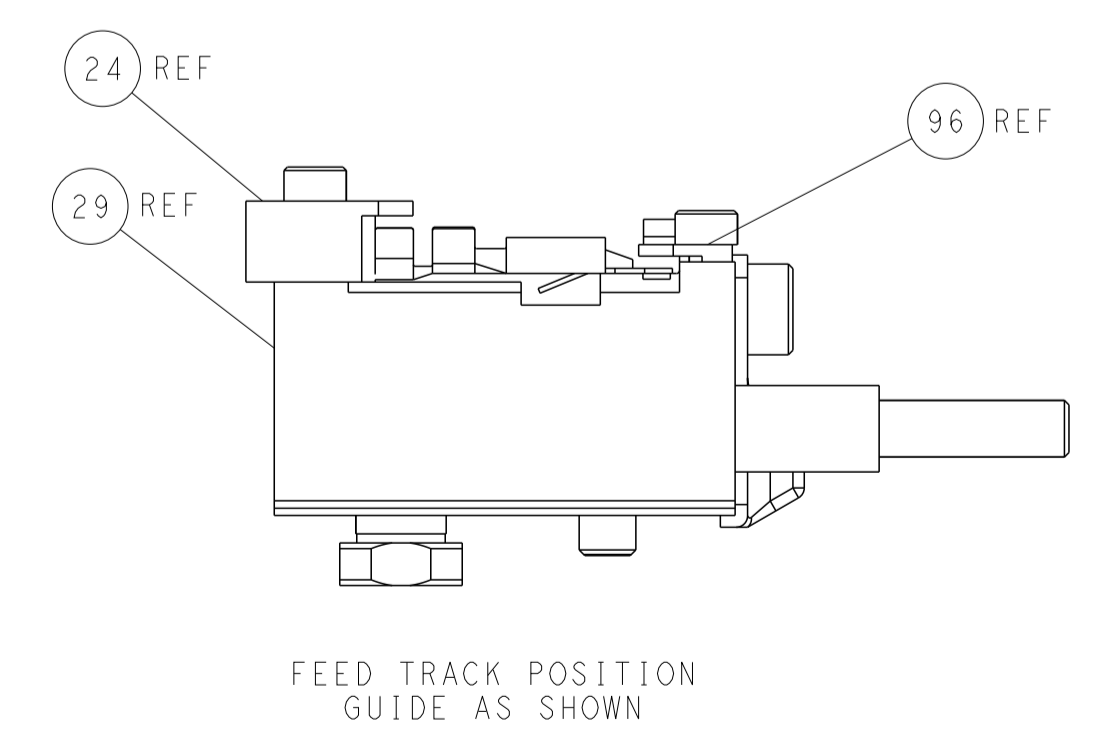
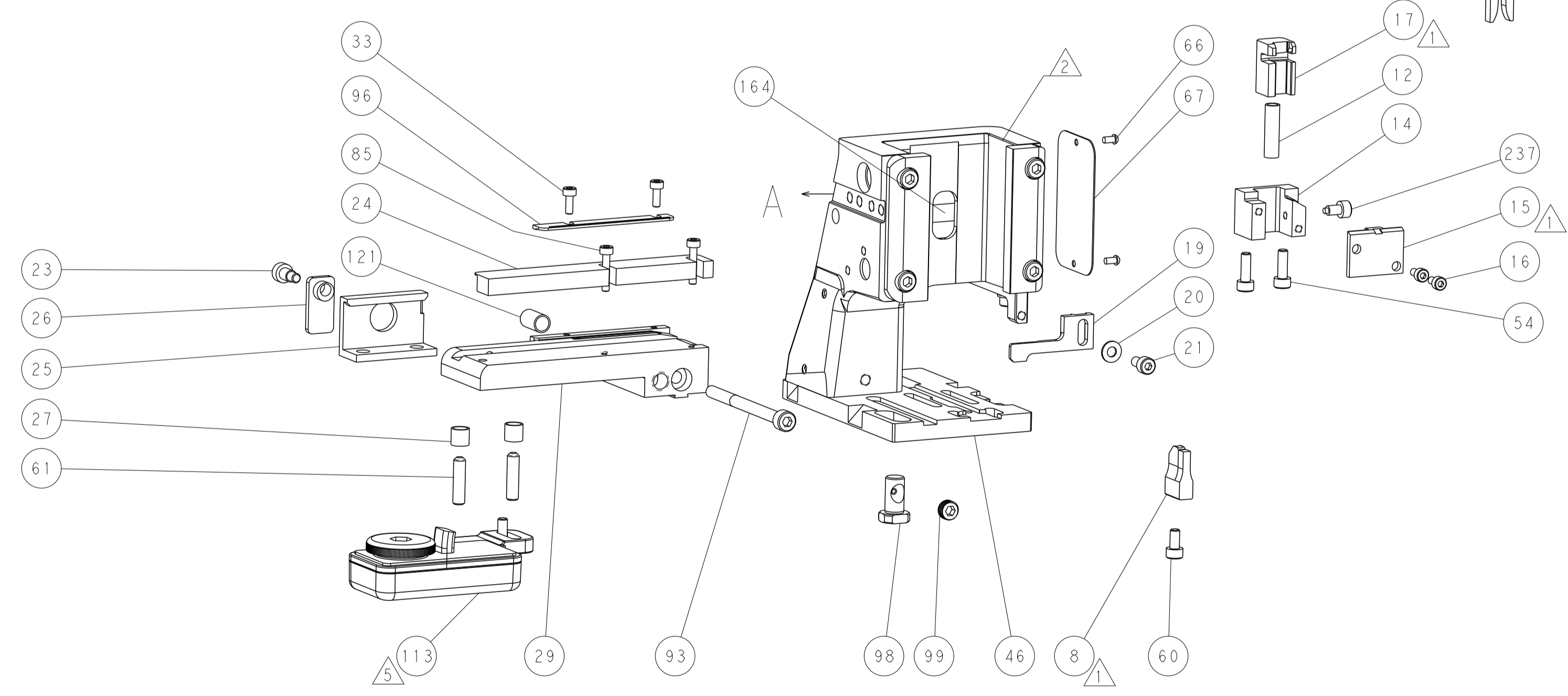
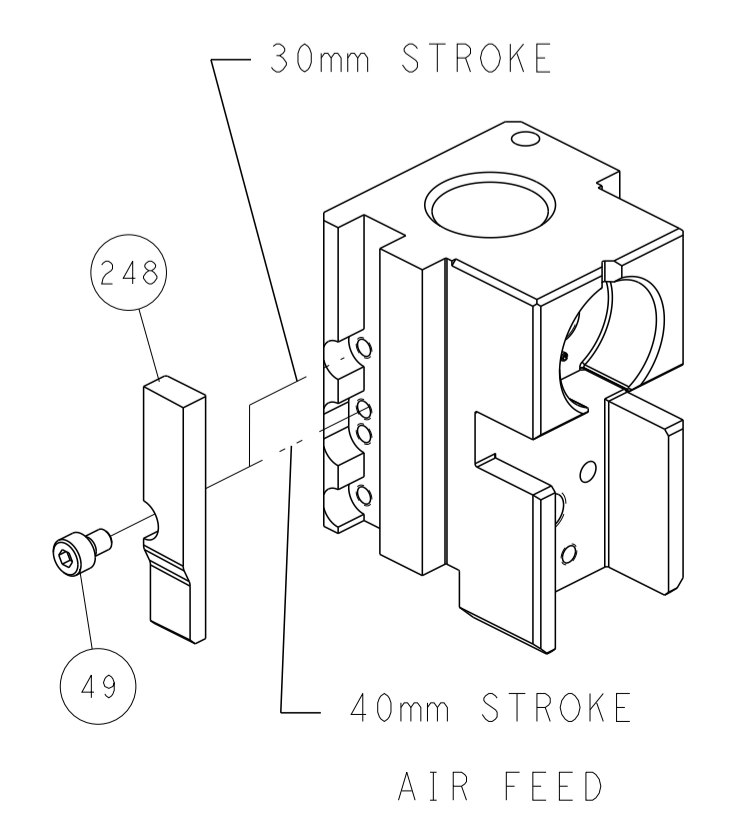
DIMENSIONS:		TOLERANCES UNLESS OTHERWISE SPECIFIED:		DWG: M. HERR 29SEP2016		TE Connectivity Harrisburg, PA 17105-3608	
mm	0 PLC ±	1 PLC ±	2 PLC ±	3 PLC ±	4 PLC ±	NAME: Ocean Side Feed Applicator	
MATERIAL:		FINISH:		APVD: T. ELBIN 29SEP2016		SIZE: CAGE CODE: DRAWING NO: 00779 C=2836439	
				WEIGHT:		RESTRICTED TO: Customer Accessible Production Drawing	
				SCALE: 1:2		SHEET 1 OF 4 REV B	

LOC	DIST	REV	DATE	BY	APPV
A	66				

### FEED TYPE PNEUMATIC



### CAM POSITION



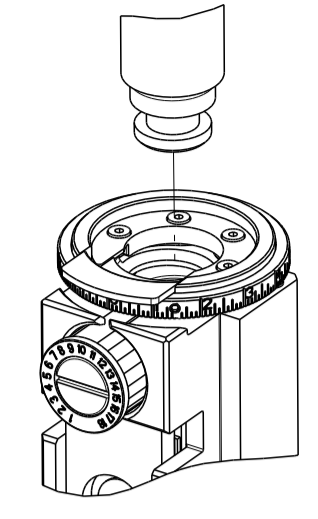
**ATLANTIC VERSION**  
 Shown on sheets 1 of 4 & 2 of 4  
 (Pacific version shown on sheets 3 of 4 & 4 of 4)

DIMENSIONS: mm 		TOLERANCES UNLESS OTHERWISE SPECIFIED: 0 PLC ± 1 PLC ± 2 PLC ± 3 PLC ± 4 PLC ± ANGLES ± FINISH		DWN M_HERR 29SEP2016 CHK T_ELBIN 29SEP2016 APVD T_ELBIN 29SEP2016 PRODUCT SPEC APPLICATION SPEC WEIGHT SCALE 1:2 SHEET 2 OF 4 REV B		NAME Ocean Side Feed Applicator SIZE CAGE CODE DRAWING NO A1 00779 C=2836439 RESTRICTED TO	
MATERIAL:				CUSTOMER ACCESSIBLE PRODUCTION DRAWING			

THIS DRAWING IS UNPUBLISHED. RELEASED FOR PUBLICATION 2016  
 COPYRIGHT 2016 BY TYCO ELECTRONICS CORPORATION. ALL RIGHTS RESERVED.

PART NUMBER	REVISION	DESCRIPTION	FEED TYPE
2-2836439-2	B	FINE CRIMP HEIGHT ADJUST	PNEUMATIC
7-2836439-7	A	CRIMP TOOLING KIT	-

PACIFIC VERSION TERMINATOR  
 INTERFACE ADAPTER



APPLICATOR DATA		
CRIMP	SIZE	TYPE
WIRE	3.25 mm [.128]	F
INSUL	3.55 mm [.140]	F

APPLICATOR INSTRUCTIONS  
 408-35042

TERMINAL DATA: DELPHI TERMINAL DELPHI PACKARD CRIMP SPECIFICATION			
TERMINAL NAME: TAXI TERMINAL F 59			
WIRE STRIP LENGTH		INSULATION DIAMETER RANGE	
4.58-5.34 mm [.180-.210 IN]		∅2.45-3.10 mm [.096-.122 IN]	
TERMINAL APPLICATION SPECIFICATION	06288808 PAGE 2 OF 6 Rev 2013-10-29		
TERMINALS APPLIED			
TE TERMINAL	DELPHI TERMINAL	TE TERMINAL	DELPHI TERMINAL
2303661-1	06288808	2303661-2	02973216

WIRE SIZE	CRIMP HEIGHT mm [INCH]	CRIMP HEIGHT REFERENCE SETTING
2.00mm2	1.65 +/- 0.05 [.065 +/- .002]	6.0
1.50mm2	1.63 +/- 0.05 [.064 +/- .002]	6.2
1.00mm2	1.60 +/- 0.05 [.063 +/- .002]	6.3



- RECOMMENDED SPARE PARTS
- REFER TO SUPPLIED INSTRUCTION SHEET FOR CLEANING, LUBRICATION AND STORAGE OF APPLICATOR.
- APPLY PART NUMBER 2-23419-6 LOCTITE TO THREADS OF ITEM 242.
- CRIMP HEIGHT REFERENCE SETTING WAS THE SETTING USED WHEN THE APPLICATOR WAS QUALIFIED AT THE FACTORY. ADJUSTMENT MAY BE NECESSARY WHEN RUNNING APPLICATOR IN THE FIELD.
- TERMINAL LUBRICANT IS RECOMMENDED.
- 6. UNLESS SPECIFIED OTHERWISE TORQUE VALUES SHALL BE USED PER DOCUMENT, 101-35000.
- POSITION ITEM 56 TO FEED TERMINAL FROM RECEPTACLE.

**\*WARNING**  
 ON INSTALLATION, SET WIRE DISC TO CRIMP HEIGHT REFERENCE SETTING FOR LARGEST WIRE SIZE. CRIMP HEIGHT REFERENCE SETTINGS GREATER THAN THE VALUE SHOWN MAY CAUSE DAMAGE TO THE CRIMP TOOLING. REFER TO THE INSTRUCTION SHEET FOR PROPER SETUP AND ADJUSTMENTS.

LOC	DIST	REV	DATE	BY	APPV
A	66				

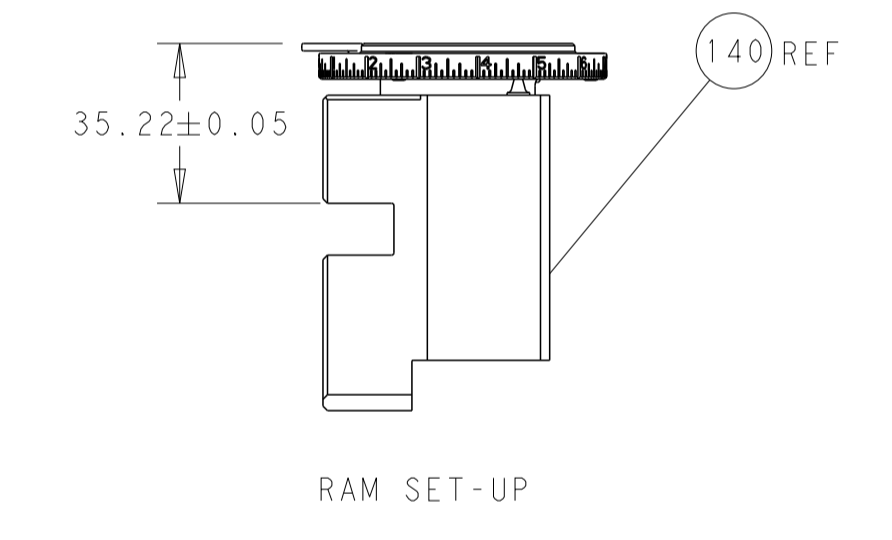
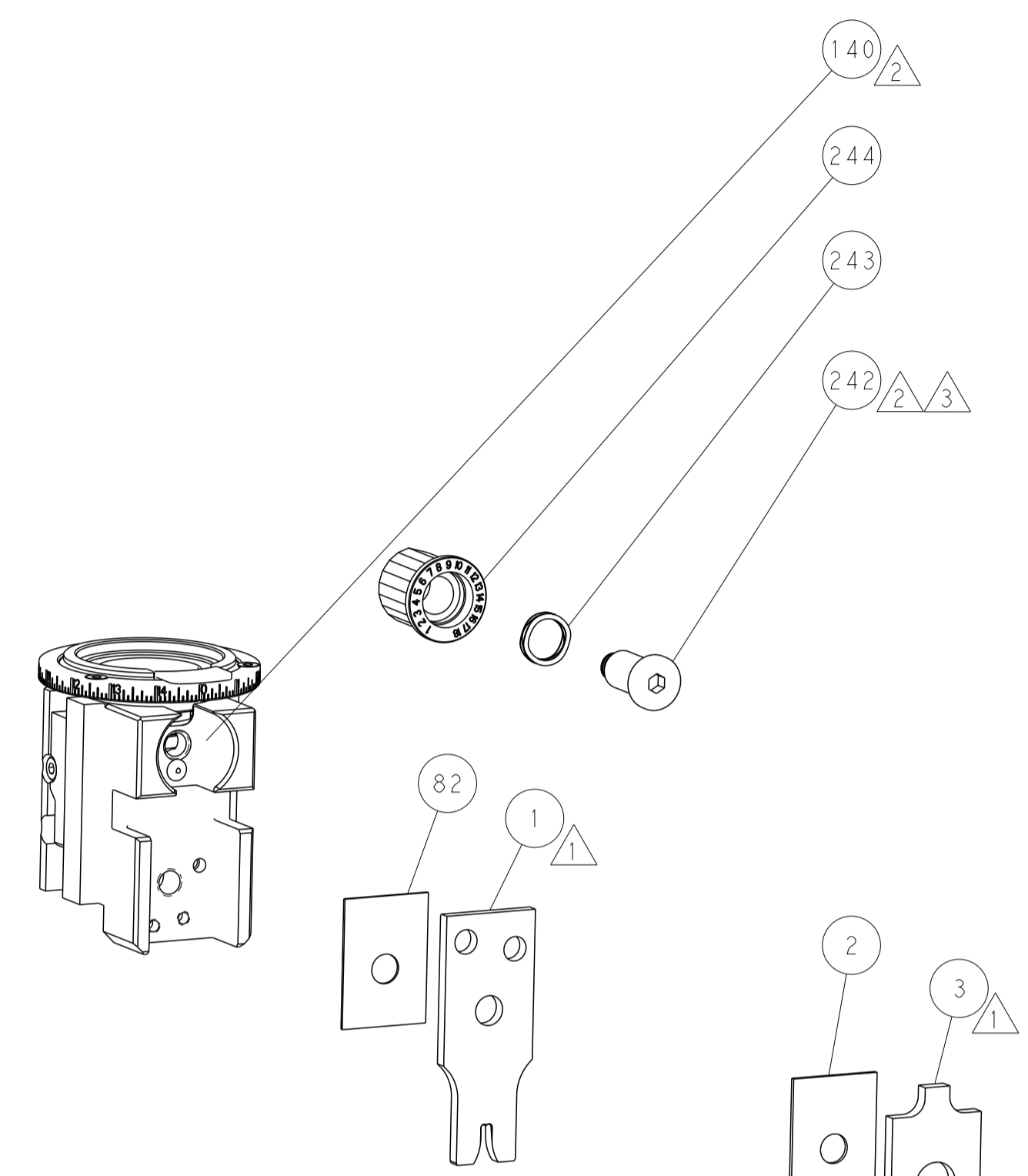
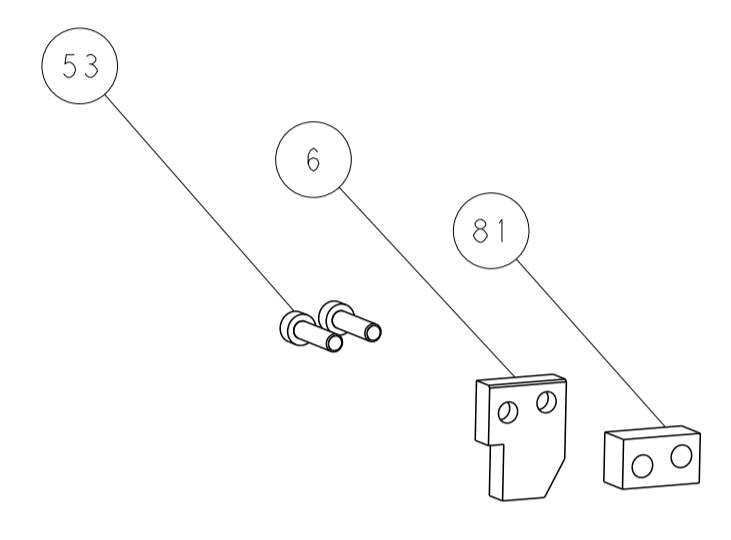
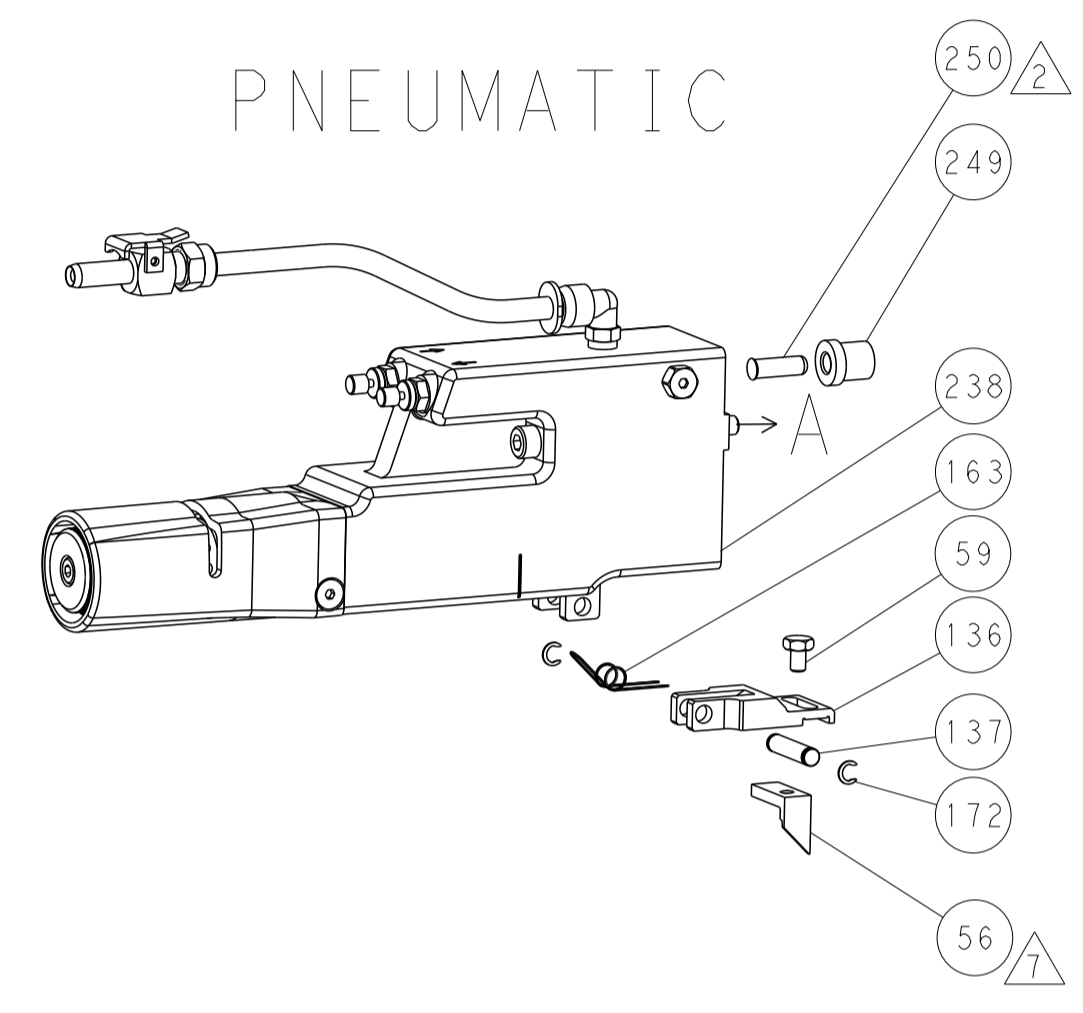
REVISIONS					
REV	DATE	DESCRIPTION	DATE	BY	APPV
-	-	SEE SHEET 1	-	-	-
-	1	2119640-1			250
-	1	1803259-1			249
-	1	2119082-4			244
-	1	2079764-1			243
-	1	2119083-1			242
-	1	2063440-1			238
-	1	356885-5			237
-	1	1-18028-0			192
-	2	21045-3			172
-	REF	994970-2			164
-	1	240638-1			163
-	1	2119641-2			151
-	1	2168083-8			144
-	2	2168083-9			143
-	1	1-1803583-0			141
-	1	1803516-1			140
-	1	3-23627-7			137
-	1	2119799-1			136
-	1	1-22281-8			121
-	1	2119955-1			113
-	1	2844908-1			99
-	1	2844907-1			98
-	1	1803258-1			96
-	1	2168083-6			93
-	2	1-2168083-3			85
-	1	455888-6			82
-	1	5-240641-1			81
-	1	1803607-1			71
-	1	2119740-1			67
-	2	2168078-1			66
-	2	2-18032-5			61
-	1	5-18022-5			59
-	1	1-1338683-0			56
-	2	2168083-8			53
-	1	18023-9			49
-	1	1803602-1			41
-	2	2168083-1			33
-	1	2-2305692-3			29
-	2	22281-8			27
-	1	356835-1			26
-	1	240792-3			25
-	1	2-189124-4			24
-	1	980371-4			23
-	1	2168083-2			21
-	1	1-18028-2			20
-	1	2119533-1			19
-	1	1673257-6			17
-	2	1-2168083-1			16
-	1	1673256-5			15
-	1	1673255-3			14
-	1	3-22280-3			12
-	-	-			10
-	-	-			9
-	1	1	3-1803252-7		8
-	-	-			7
-	-	-	2-690468-5		6
-	-	-			5
-	1	6-238011-5			4
-	1	1	8-1803187-9		3
-	1	1	1-455888-0		2
-	1	1	8-1633588-7		1

DIMENSIONS:		TOLERANCES UNLESS OTHERWISE SPECIFIED:		DWG: M_HERR 29SEP2016		TE Connectivity Harrisburg, PA 17105-3608	
mm	0 PLC ±	1 PLC ±	2 PLC ±	3 PLC ±	4 PLC ±	NAME: Ocean Side Feed Applicator	
MATERIAL:		FINISH:		APVD: T_ELBIN 29SEP2016		SIZE: CAGE CODE: DRAWING NO: 00779 C=2836439	
				WEIGHT:		RESTRICTED TO: B	
				Customer Accessible Production Drawing SCALE: 1:2 SHEET 3 OF 4 REV: B			

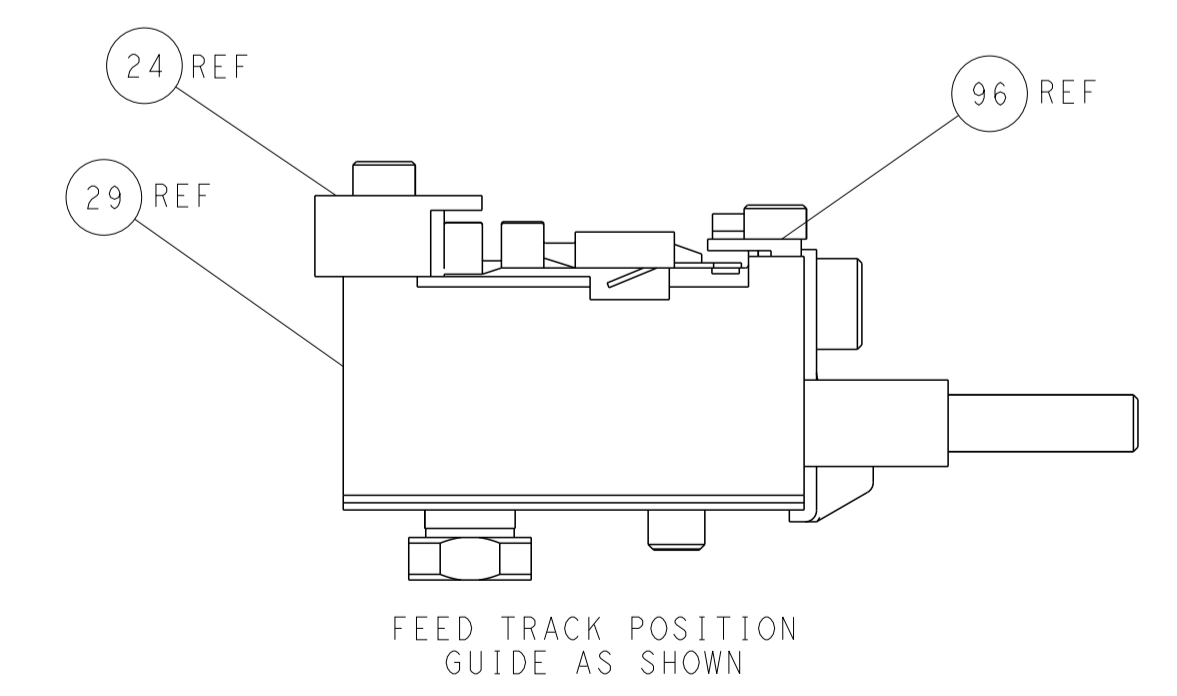
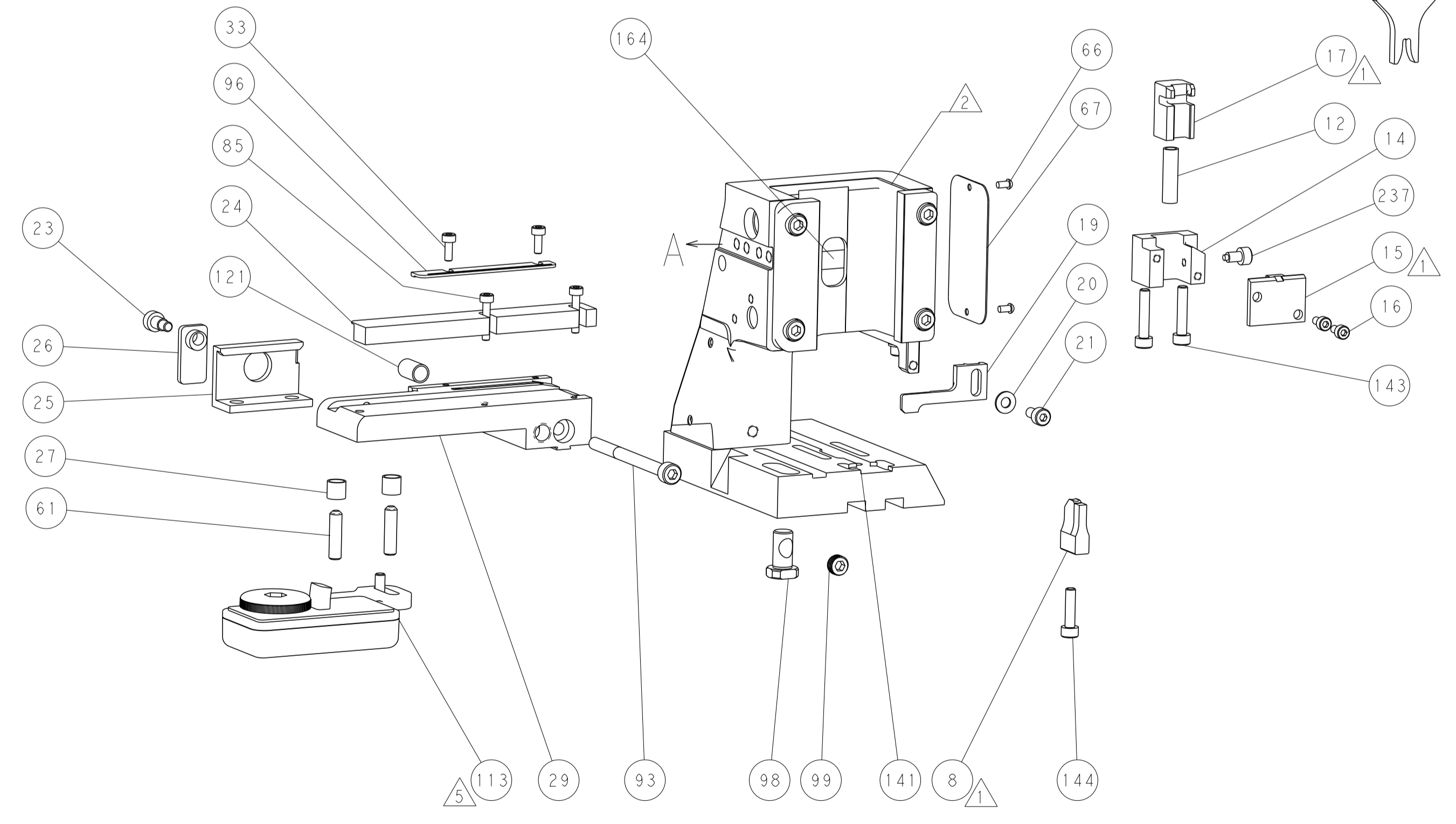
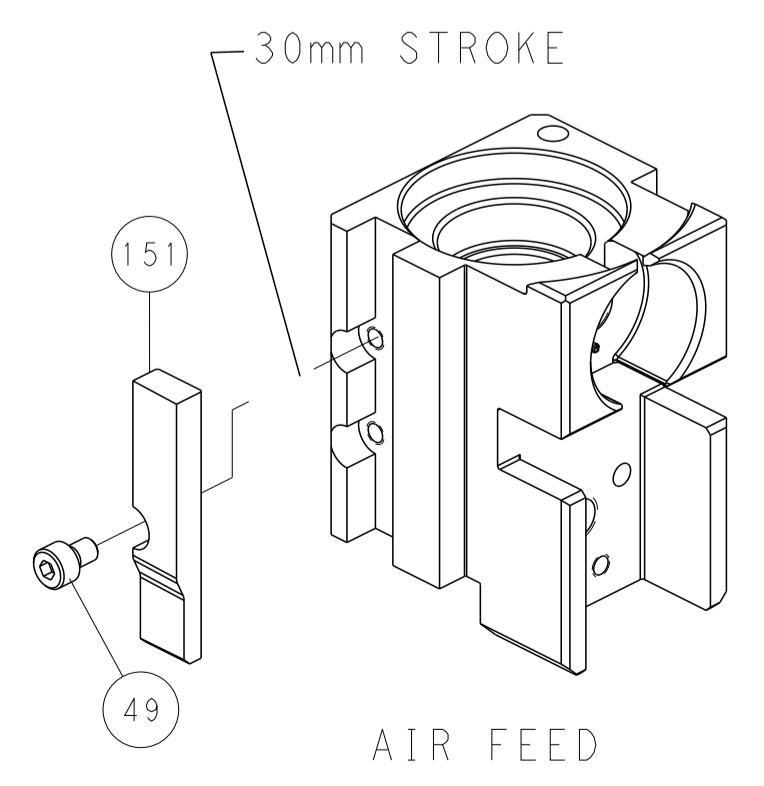
PACIFIC VERSION  
 Shown on sheets 3 of 4 & 4 of 4  
 (Atlantic version shown on sheets 1 of 4 & 2 of 4)

LOC		DIST		REVISIONS			
A	66	P	LTM	DESCRIPTION	DATE	OWN	APVD
		-	-	SEE SHEET 1	-	-	-

### FEED TYPE PNEUMATIC



### CAM POSITION



**PACIFIC VERSION**  
 Shown on sheets 3 of 4 & 4 of 4  
 (Atlantic version shown on sheets 1 of 4 & 2 of 4)

<small>THIS DRAWING IS UNPUBLISHED. RELEASED FOR PUBLICATION 2016. © COPYRIGHT 2016 BY TYCO ELECTRONICS CORPORATION. ALL RIGHTS RESERVED.</small>		DWN: M. HERR 29SEP2016 CHK: T. ELBIN 29SEP2016 APVD: T. ELBIN 29SEP2016	<b>STE</b> TE Connectivity Harrisburg, PA 17105-3608
DIMENSIONS: mm TOLERANCES UNLESS OTHERWISE SPECIFIED: 0 PLC ± 1 PLC ± 2 PLC ± 3 PLC ± 4 PLC ± ANGLES ± MATERIAL: - FINISH: -		NAME: Ocean Side Feed Applicator PRODUCT SPEC: - APPLICATION SPEC: - WEIGHT: - SCALE: 1:2	SIZE: A1 CAGE CODE: 00779 DRAWING NO: C=2836439 SHEET: 4 OF 4 REV: B
CUSTOMER ACCESSIBLE PRODUCTION DRAWING		RESTRICTED TO: -	

# Mouser Electronics

Authorized Distributor

Click to View Pricing, Inventory, Delivery & Lifecycle Information:

[TE Connectivity:](#)

[2836439-2](#)