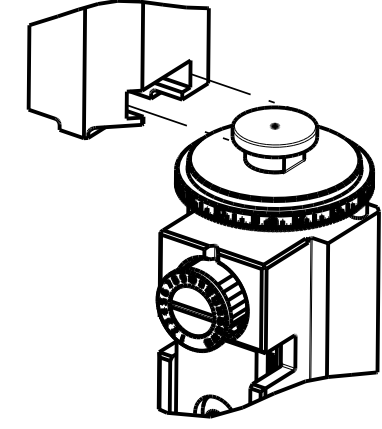


| PART NUMBER | REVISION | DESCRIPTION | FEED TYPE |
|-------------|----------|----------------------------------|------------|
| 2266314-1 | C | FINE CRIMP HEIGHT ADJUST | MECHANICAL |
| 2266314-2 | C | FINE CRIMP HEIGHT ADJUST | PNEUMATIC |
| 7-2266314-1 | C | MECHANICAL AND CRIMP TOOLING KIT | MECHANICAL |
| 7-2266314-2 | C | PNEUMATIC AND CRIMP TOOLING KIT | PNEUMATIC |
| 7-2266314-7 | A | CRIMP TOOLING KIT | - |

ATLANTIC VERSION TERMINATOR INTERFACE ADAPTER



| APPLICATOR DATA | | |
|-----------------|----------------|------|
| CRIMP | SIZE | TYPE |
| WIRE | 2.79 mm [.110] | F |
| INSUL | 4.57 mm [.180] | O |

APPLICATOR INSTRUCTIONS 408-35042

| TERMINAL DATA: TE TERMINAL | | TE CRIMP SPECIFICATION | |
|---------------------------------------|-------------|------------------------------|-------------|
| TERMINAL NAME: TAB FASTON .187 SERIES | | | |
| WIRE STRIP LENGTH | | INSULATION DIAMETER RANGE | |
| 5.29-5.89 mm [.208-.232 IN] | | Ø3.05-3.81 mm [.120-.150 IN] | |
| TERMINAL APPLICATION SPECIFICATION | 114-2036 | | |
| TERMINALS APPLIED | | | |
| TE TERMINAL | TE TERMINAL | TE TERMINAL | TE TERMINAL |
| 341340-1 | 60850-1 | 61687-2 | |
| 341340-2 | 60850-2 | | |

| WIRE SIZE | CRIMP HEIGHT mm [INCH] | CRIMP HEIGHT REFERENCE SETTING |
|-----------|----------------------------|--------------------------------|
| 14 AWG | 2.16+/-0.05 [.085+/- .002] | 4.9 |
| 16 AWG | 1.93+/-0.05 [.076+/- .002] | 7.3 |
| 18 AWG | 1.78+/-0.05 [.070+/- .002] | 8.9 |

- RECOMMENDED SPARE PARTS
- REFER TO SUPPLIED INSTRUCTION SHEET FOR CLEANING, LUBRICATION AND STORAGE OF APPLICATOR.
- APPLY PART NUMBER 2-23419-6 LOCTITE TO THREADS OF ITEM 242.
- CRIMP HEIGHT REFERENCE SETTING WAS THE SETTING USED WHEN THE APPLICATOR WAS QUALIFIED AT THE FACTORY. ADJUSTMENT MAY BE NECESSARY WHEN RUNNING APPLICATOR IN THE FIELD.
- TERMINAL LUBRICANT IS RECOMMENDED.
- 6. UNLESS SPECIFIED OTHERWISE TORQUE VALUES SHALL BE USED PER DOCUMENT, 101-35000.

***WARNING**
ON INSTALLATION, SET WIRE DISC TO CRIMP HEIGHT REFERENCE SETTING FOR LARGEST WIRE SIZE. CRIMP HEIGHT REFERENCE SETTINGS GREATER THAN THE VALUE SHOWN MAY CAUSE DAMAGE TO THE CRIMP TOOLING. REFER TO THE INSTRUCTION SHEET FOR PROPER SETUP AND ADJUSTMENTS.

ATLANTIC VERSION
Shown on sheets 1 of 4 & 2 of 4
(Pacific version shown on sheets 3 of 4 & 4 of 4)

| LOC | DIST | REVISIONS | | | |
|-----|------|-----------|---------------|-----------|-------|
| A | 66 | REV | DATE | BY | APPV |
| | | A | RELEASE | 15JUL2014 | XZ TE |
| | | B | ECR-19-005582 | 06APR2019 | TB CT |
| | | C | ECR-19-018770 | 04DEC2019 | MZ SJ |

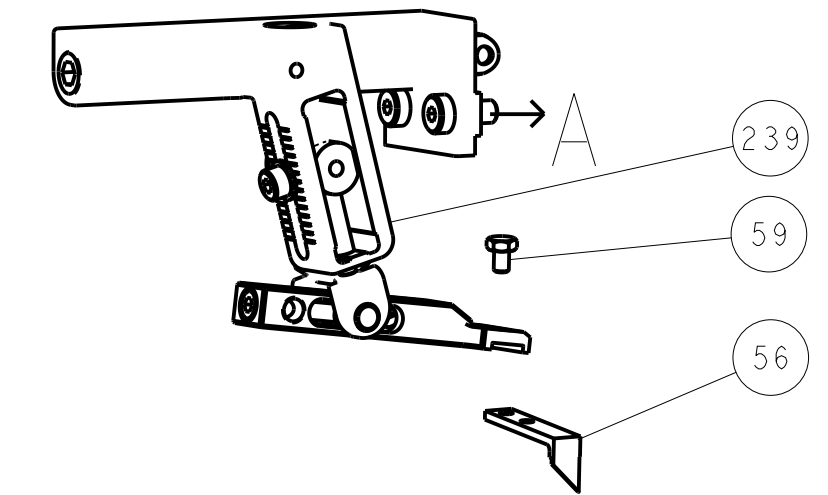
| | | | | | | | | |
|---|-----|-----|-----|-----|-------------|-------------------------------------|-------------|---------|
| - | 1 | - | 1 | - | 2119640-1 | PUSH ROD, AIR FEED | 250 | |
| - | 1 | - | 1 | - | 1803259-1 | BUSHING, FLANGED | 249 | |
| - | 1 | - | 1 | - | 2119641-1 | FEED CAM, AIR FEED | 248 | |
| - | 1 | 1 | 1 | 1 | 2119082-7 | CAM, SNAIL, INSULATION ADJUSTMENT | 244 | |
| - | 1 | 1 | 1 | 1 | 2079764-1 | WASHER, WAVE SPRING, CREST-TO-CREST | 243 | |
| - | 1 | 1 | 1 | 1 | 2119083-1 | RETAINER, INSULATION DIAL | 242 | |
| - | 1 | 1 | 1 | 1 | 7-18023-7 | SCR, SKT HD CAP M3 X 4.0 | 241 | |
| - | - | 1 | - | 1 | 2119580-1 | MECHANICAL FEED ASSEMBLY | 239 | |
| - | 1 | - | 1 | - | 2063440-1 | AIR FEED MODULE | 238 | |
| - | 2 | - | 2 | - | 21045-3 | RING, RETAIN, EXTERN, 3/16 CRESCENT | 172 | |
| - | REF | REF | REF | REF | 994970-2 | COUNTER, MAGNETIC | 164 | |
| - | 1 | - | 1 | - | 240638-1 | SPRING, FEED FINGER | 163 | |
| - | 1 | - | 1 | - | 3-23627-7 | PIN, RETAIN, GRVD, 3/16 X .854 | 137 | |
| - | 1 | - | 1 | - | 2119799-1 | HOLDER, FEED FINGER, AF | 136 | |
| - | 1 | 1 | 1 | 1 | 2119955-1 | ASSY, LUBRICATOR, SIDE FEED | 113 | |
| - | 1 | 1 | 1 | 1 | 2844908-1 | SCREW, LOCKING | 99 | |
| - | 1 | 1 | 1 | 1 | 2844907-1 | POST, LOCKING | 98 | |
| - | 1 | 1 | 1 | 1 | 455888-5 | SPACER, CRIMPER | 82 | |
| - | 1 | 1 | 1 | 1 | 1803607-1 | DOCUMENTATION PACKAGE | 71 | |
| - | 1 | 1 | 1 | 1 | 2119791-5 | DEPRESSOR, WIRE | 70 | |
| - | 1 | 1 | 1 | 1 | 2119943-1 | WASHER, SPACER | 69 | |
| - | 1 | 1 | 1 | 1 | 2119740-1 | TAG, IDENTIFICATION | 67 | |
| - | 2 | 2 | 2 | 2 | 2168078-1 | SCREW, DRIVE, RH, RoHS, 2 x .188 | 66 | |
| - | 1 | 1 | 1 | 1 | 2168083-2 | SCR, SKT HD CAP, RoHS, M4 X 8.0 | 60 | |
| - | 1 | 1 | 1 | 1 | 5-18022-5 | SCR, HEX HD CAP, M4 X 6.0 | 59 | |
| - | 1 | 1 | 1 | 1 | 1338685-1 | PAWL, FEED | 56 | |
| - | 4 | 4 | 4 | 4 | 2168083-3 | SCR, SKT HD CAP, RoHS, M4 X 12.0 | 54 | |
| - | 2 | 2 | 2 | 2 | 1-2168083-0 | SCR, SKT HD CAP, RoHS, M4 X 10 | 53 | |
| - | 1 | 1 | 1 | 1 | 5018030-1 | NUT, HEX, REG, RoHS, M3 | 52 | |
| - | 1 | 1 | 1 | 1 | 811242-5 | BUMPER, HOLD DOWN | 51 | |
| - | 1 | 1 | 1 | 1 | 690753-2 | SPACER, TONKER | 50 | |
| - | 1 | 2 | 1 | 2 | 18023-9 | SCR, SKT HD CAP M4 X 6.0 | 49 | |
| - | - | 1 | - | 1 | 2119652-1 | FEED CAM, PRE FEED | 48 | |
| - | - | 1 | - | 1 | 2119653-1 | FEED CAM, POST FEED | 47 | |
| - | 1 | 1 | 1 | 1 | 1803583-9 | APPLICATOR BASIC ASSEMBLY, SF | 46 | |
| - | 1 | 1 | 1 | 1 | 1803515-1 | RAM ASSEMBLY, SF ATLANTIC | 44 | |
| - | 1 | 1 | 1 | 1 | 1803602-1 | SCR, BHSC, RoHS (M8 X 25) | 41 | |
| - | 1 | 1 | 1 | 1 | 1752356-9 | SUPPORT, TERMINAL | 34 | |
| - | 2 | 2 | 2 | 2 | 2079383-5 | SCR, BHSC, RoHS (M4 X 20) | 33 | |
| - | 2 | 2 | 2 | 2 | 3-2844962-2 | SPACER, CYLINDRICAL, STRIP GUIDE | 30 | |
| - | 1 | 1 | 1 | 1 | 2844992-1 | ASSEMBLY, STRIP GUIDE | 29 | |
| - | 1 | 1 | 1 | 1 | 455888-3 | SPACER, CRIMPER | 28 | |
| - | 1 | 1 | 1 | 1 | 1320928-2 | STRIP GUIDE | 24 | |
| - | 1 | 1 | 1 | 1 | 2168083-2 | SCR, SKT HD CAP, RoHS, M4 X 8.0 | 21 | |
| - | 2 | 2 | 2 | 2 | 1-18028-2 | WASHER, FLAT, REG M4 | 20 | |
| - | 1 | 1 | 1 | 1 | 2119533-1 | STRIPPER, SIDE FEED | 19 | |
| - | 1 | 1 | 1 | 1 | 2119806-1 | INSERT, SHEAR | 13 | |
| - | 1 | 1 | 1 | 1 | 3-22280-3 | SPRING, COMPRESSION | 12 | |
| - | 1 | 1 | 1 | 1 | 1-356885-4 | STOP, SHEAR | 11 | |
| - | 1 | 1 | 1 | 1 | 2119805-1 | SHEAR HOLDER, FRONT | 10 | |
| - | 1 | 1 | 1 | 1 | 1803095-6 | FLOATING SHEAR, FRONT | 9 | |
| - | 1 | 2 | 2 | 1 | 1-1633923-3 | ANVIL, COMBINATION | 8 | |
| - | - | - | - | - | - | - | 7 | |
| - | - | - | - | - | - | - | 6 | |
| - | 1 | 1 | 1 | 1 | 1-2119757-0 | DEPRESSOR, SHEAR | 5 | |
| - | 1 | 1 | 1 | 1 | 2-238011-1 | BLOCK, CRIMPER SPACER | 4 | |
| - | 1 | 2 | 2 | 1 | 6-2119784-0 | CRIMPER, INSULATION O PREMIUM | 3 | |
| - | 1 | 1 | 1 | 1 | 455888-4 | SPACER, CRIMPER | 2 | |
| - | 1 | 2 | 2 | 1 | 7-456408-0 | CRIMPER, WIRE PREMIUM | 1 | |
| - | 77 | -72 | -71 | -2 | -1 | PART NO | DESCRIPTION | ITEM NO |

| DIMENSIONS: | | TOLERANCES UNLESS OTHERWISE SPECIFIED: | | MATERIAL: | | FINISH: | |
|-------------|---------|--|---------|-----------|---------|----------|----------|
| mm | 0 PLC ± | 1 PLC ± | 2 PLC ± | 3 PLC ± | 4 PLC ± | ANGLES ± | FINISH ± |
| MATERIAL: | | FINISH: | | WEIGHT: | | SCALE: | |
| - | | - | | - | | 1:2 | |

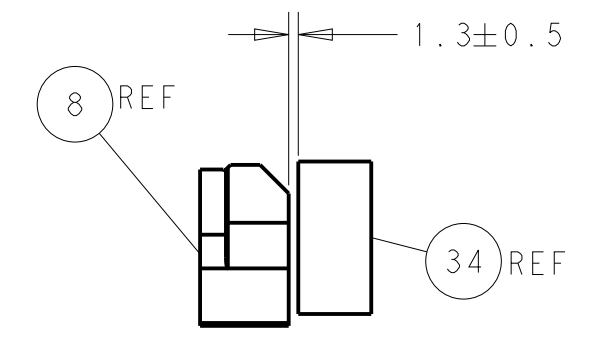
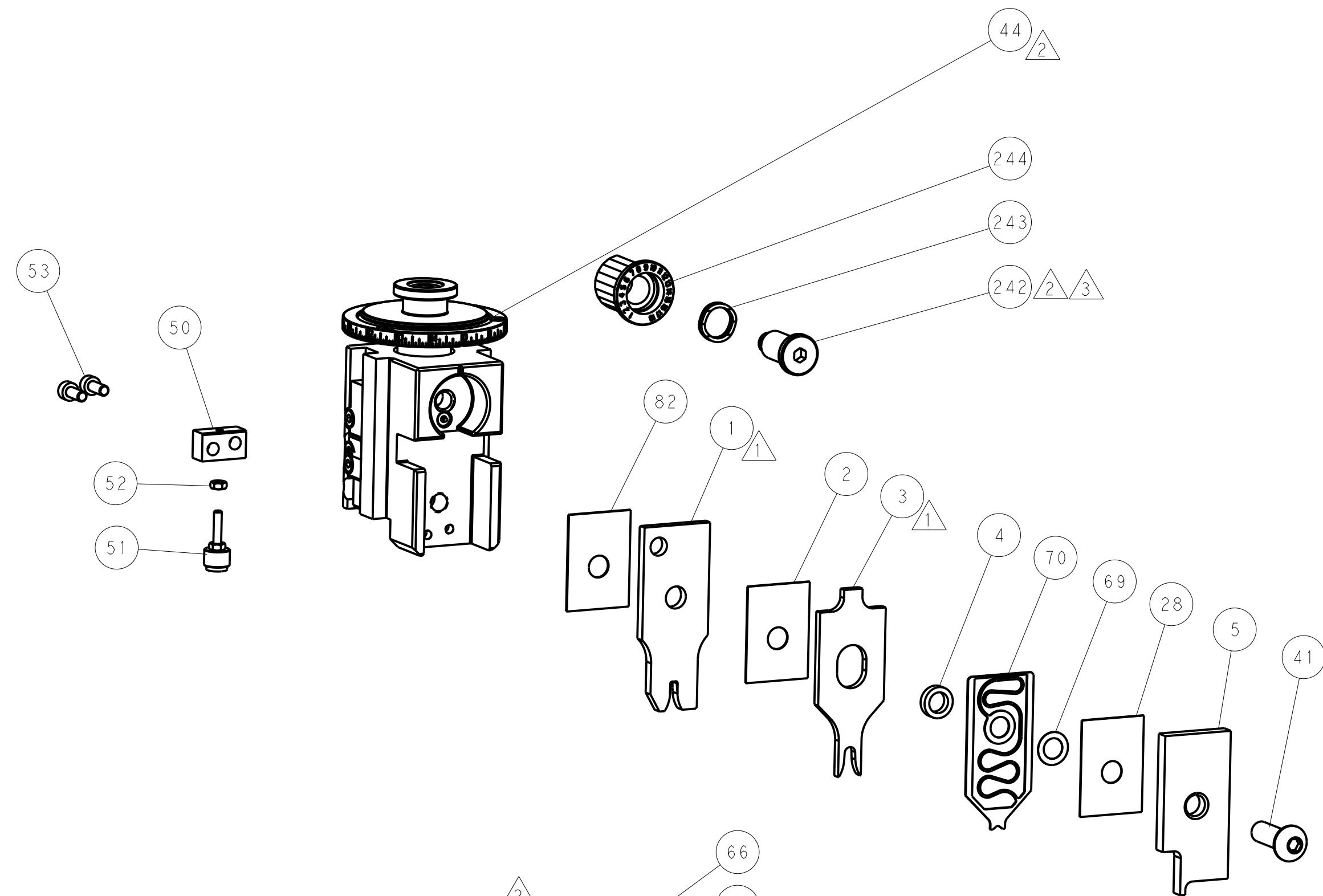
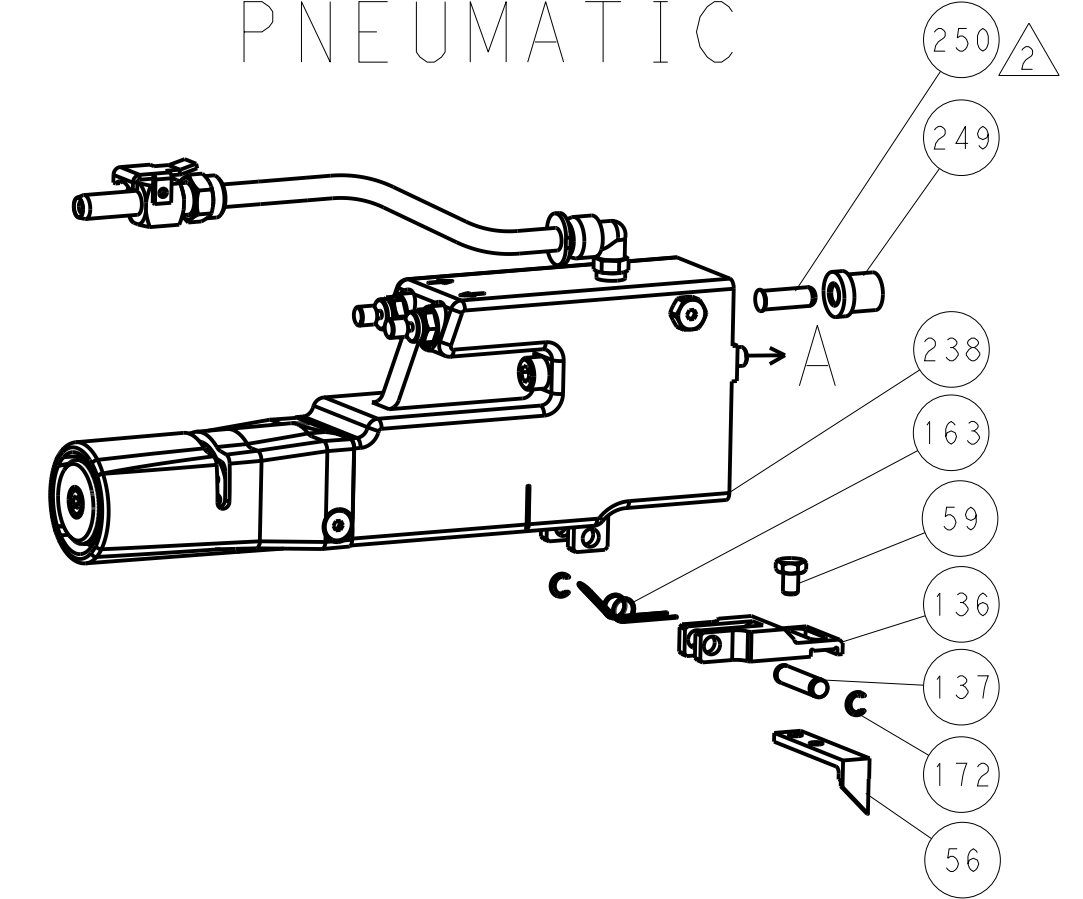
| | | | |
|--|-----------|------------|--|
| OWN | Y. YIN | 04JUN2014 | TE Connectivity Harrisburg, PA 17105-3608 |
| CHK | G. BAILEY | 04JUN2014 | |
| APVD | H. GUO | 04JUN2014 | NAME |
| PRODUCT SPEC | | | Ocean Side Feed |
| APPLICATION SPEC | | | Applicator |
| SIZE | CAGE CODE | DRAWING NO | RESTRICTED TO |
| A1 | 00779 | 2266314 | - |
| Customer Accessible Production Drawing | | | SHEET 1 OF 4 |

| LOC | | DIST | | REVISIONS | | | |
|-----|----|------|-----|-------------|------|-----|------|
| A | 66 | P | LTN | DESCRIPTION | DATE | DMN | APVD |
| | | - | | SEE SHEET 1 | | | |

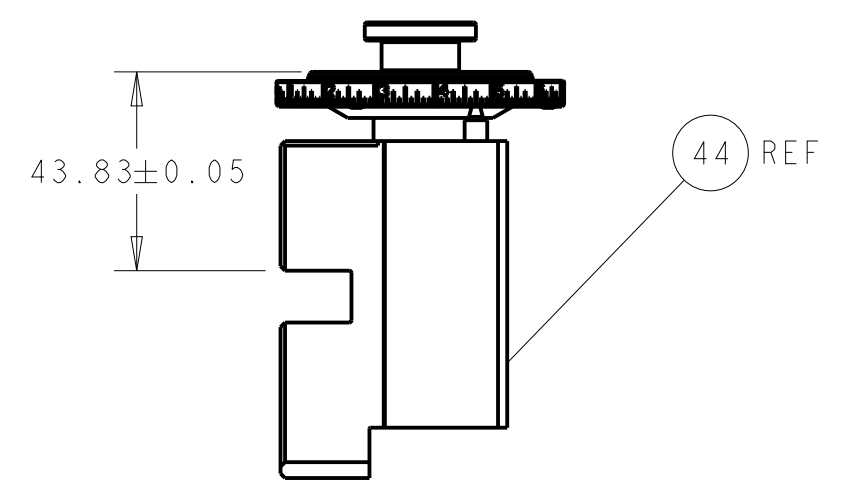
FEED TYPE MECHANICAL



PNEUMATIC

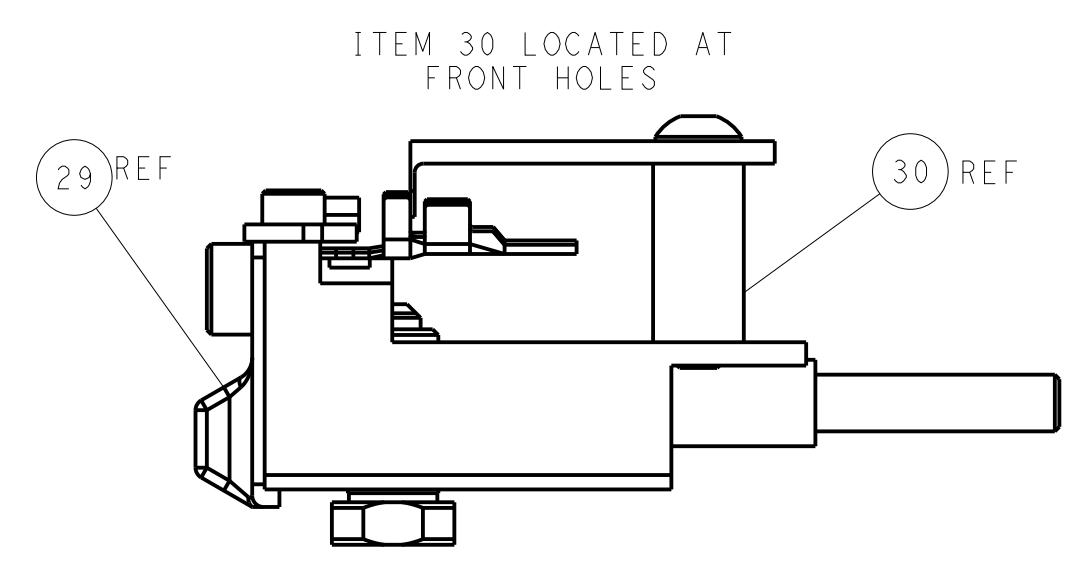
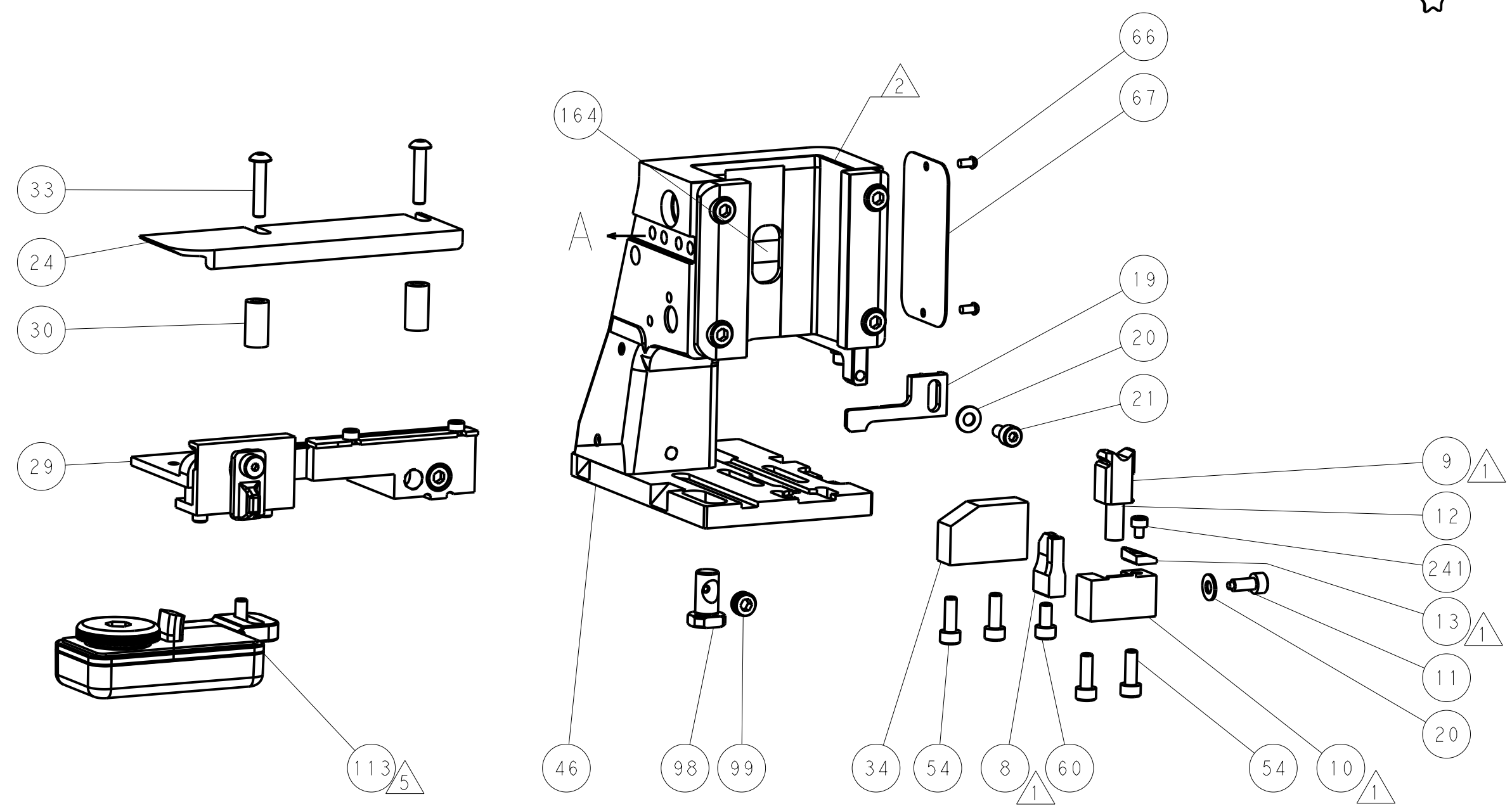
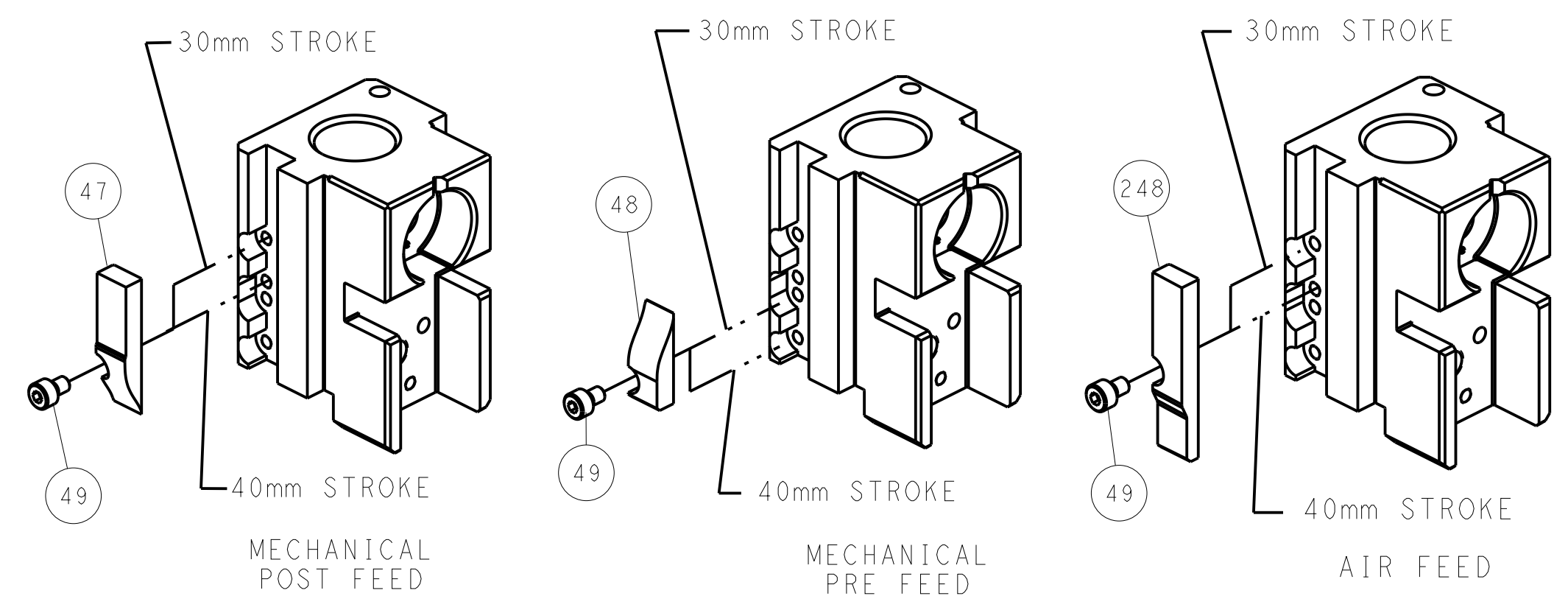


TERMINAL SUPPORT LOCATION



RAM SET-UP

CAM POSITIONS



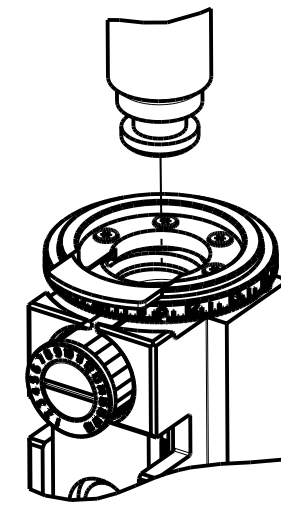
FEED TRACK POSITION GUIDE BY INSULATION BARREL

ATLANTIC VERSION
 Shown on sheets 1 of 4 & 2 of 4
 (Pacific version shown on sheets 3 of 4 & 4 of 4)

| | | | | | | | |
|-------------|---------|--|---------|--------------------------|---------|---|--|
| DIMENSIONS: | | TOLERANCES UNLESS OTHERWISE SPECIFIED: | | DWG: Y. YIN 04JUN2014 | | TE Connectivity | |
| mm | 0 PLC ± | 1 PLC ± | 2 PLC ± | 3 PLC ± | 4 PLC ± | Harrisburg, PA 17105-3608 | |
| MATERIAL: | | FINISH: | | CHK: G. BAILEY 04JUN2014 | | NAME: Ocean Side Feed Applicator | |
| | | | | APVD: H. GUO 04JUN2014 | | SIZE: CAGE CODE: DRAWING NO: A11 00779 ©=2266314 | |
| | | | | WEIGHT: | | RESTRICTED TO: Customer Accessible Production Drawing | |
| | | | | SCALE: 1:2 | | SHEET 2 OF 4 REV C | |

| PART NUMBER | REVISION | DESCRIPTION | FEED TYPE |
|-------------|----------|--------------------------|------------|
| 2-2266314-1 | C | FINE CRIMP HEIGHT ADJUST | MECHANICAL |
| 2-2266314-2 | C | FINE CRIMP HEIGHT ADJUST | PNEUMATIC |
| 7-2266314-7 | A | CRIMP TOOLING KIT | - |

PACIFIC VERSION TERMINATOR
INTERFACE ADAPTER



| APPLICATOR DATA | | |
|--------------------------------------|----------------|------|
| CRIMP | SIZE | TYPE |
| WIRE | 2.79 mm [.110] | F |
| INSUL | 4.57 mm [.180] | O |
| APPLICATOR INSTRUCTIONS 408-35042 | | |

| TERMINAL DATA: TE TERMINAL | | TE CRIMP SPECIFICATION | |
|--|-------------|---|-------------|
| TERMINAL NAME: TAB FASTON .187 SERIES | | | |
| WIRE STRIP LENGTH 5.29-5.89 mm [.208-.232 IN] | | INSULATION DIAMETER RANGE Ø3.05-3.81 mm [.120-.150 IN] | |
| TERMINAL APPLICATION SPECIFICATION | 114-2036 | - | - |
| TERMINALS APPLIED | | | |
| TE TERMINAL | TE TERMINAL | TE TERMINAL | TE TERMINAL |
| 341340-1 | 60850-1 | 61687-2 | |
| 341340-2 | 60850-2 | | |

| WIRE SIZE | CRIMP HEIGHT mm [INCH] | CRIMP HEIGHT REFERENCE SETTING |
|-----------|----------------------------|--------------------------------|
| 14 AWG | 2.16+/-0.05 [.085+/-0.002] | 4.9 |
| 16 AWG | 1.93+/-0.05 [.076+/-0.002] | 7.3 |
| 18 AWG | 1.78+/-0.05 [.070+/-0.002] | 8.9 |

- RECOMMENDED SPARE PARTS
- REFER TO SUPPLIED INSTRUCTION SHEET FOR CLEANING, LUBRICATION AND STORAGE OF APPLICATOR.
- APPLY PART NUMBER 2-23419-6 LOCTITE TO THREADS OF ITEM 242.
- CRIMP HEIGHT REFERENCE SETTING WAS THE SETTING USED WHEN THE APPLICATOR WAS QUALIFIED AT THE FACTORY. ADJUSTMENT MAY BE NECESSARY WHEN RUNNING APPLICATOR IN THE FIELD.
- TERMINAL LUBRICANT IS RECOMMENDED.
- 6. UNLESS SPECIFIED OTHERWISE TORQUE VALUES SHALL BE USED PER DOCUMENT, 101-35000.

***WARNING**
ON INSTALLATION, SET WIRE DISC TO CRIMP HEIGHT REFERENCE SETTING FOR LARGEST WIRE SIZE. CRIMP HEIGHT REFERENCE SETTINGS GREATER THAN THE VALUE SHOWN MAY CAUSE DAMAGE TO THE CRIMP TOOLING. REFER TO THE INSTRUCTION SHEET FOR PROPER SETUP AND ADJUSTMENTS.

| LOC | DIST | REV | DATE | BY | APPD |
|-----|------|-----|------|----|------|
| A | 66 | | | | |

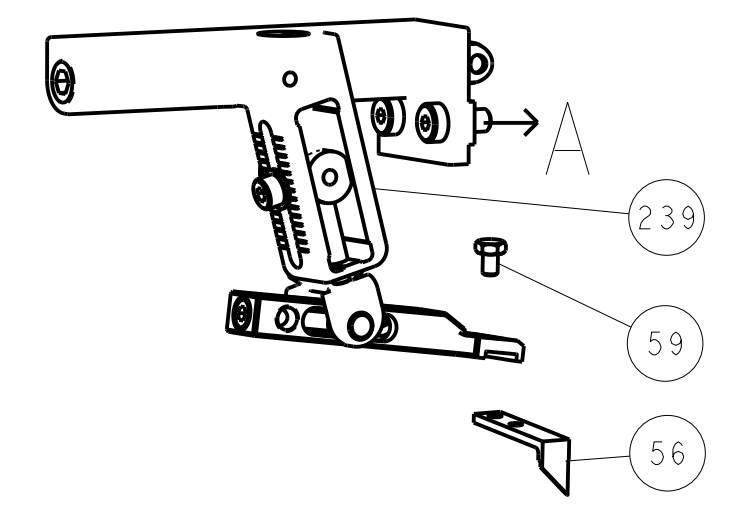
| REV | DATE | BY | APPD | DESCRIPTION | QTY | |
|-----|------|-----|------|-------------|-------------------------------------|-----|
| - | 1 | - | | 2119640-1 | PUSH ROD, AIR FEED | 250 |
| - | 1 | - | | 1803259-1 | BUSHING, FLANGED | 249 |
| - | 1 | 1 | | 2119082-7 | CAM, SNAIL, INSULATION ADJUSTMENT | 244 |
| - | 1 | 1 | | 2079764-1 | WASHER, WAVE SPRING, CREST-TO-CREST | 243 |
| - | 1 | 1 | | 2119083-1 | RETAINER, INSULATION DIAL | 242 |
| - | 1 | 1 | | 7-18023-7 | SCR, SKT HD CAP M3 X 4.0 | 241 |
| - | - | 1 | | 2119580-1 | MECHANICAL FEED ASSEMBLY | 239 |
| - | 1 | - | | 2063440-1 | AIR FEED MODULE | 238 |
| - | 2 | - | | 21045-3 | RING, RETAIN, EXTERN, 3/16 CRESCENT | 172 |
| - | REF | REF | | 994970-2 | COUNTER, MAGNETIC | 164 |
| - | 1 | - | | 240638-1 | SPRING, FEED FINGER | 163 |
| - | 1 | - | | 2119641-2 | FEED CAM, AIR FEED | 151 |
| - | 1 | 1 | | 2168083-8 | SCR, SKT HD CAP, RoHS, M4 X 16 | 144 |
| - | 4 | 4 | | 2168083-9 | SCR, SKT HD CAP, RoHS, M4 X 20 | 143 |
| - | - | 1 | | 2119653-2 | FEED CAM, POST FEED | 142 |
| - | 1 | 1 | | 1-1803583-0 | APPLICATOR BASIC ASSEMBLY, SF | 141 |
| - | 1 | 1 | | 1803516-1 | RAM ASSEMBLY, SF PACIFIC | 140 |
| - | 1 | - | | 3-23627-7 | PIN, RETAIN, GRVD, 3/16 X .854 | 137 |
| - | 1 | - | | 2119799-1 | HOLDER, FEED FINGER, AF | 136 |
| - | 1 | 1 | | 2119955-1 | ASSY, LUBRICATOR, SIDE FEED | 113 |
| - | 1 | 1 | | 2844908-1 | SCREW, LOCKING | 99 |
| - | 1 | 1 | | 2844907-1 | POST, LOCKING | 98 |
| - | 1 | 1 | | 455888-5 | SPACER, CRIMPER | 82 |
| - | 1 | 1 | | 1803607-1 | DOCUMENTATION PACKAGE | 71 |
| - | 1 | 1 | | 2119791-5 | DEPRESSOR, WIRE | 70 |
| - | 1 | 1 | | 2119943-1 | WASHER, SPACER | 69 |
| - | 1 | 1 | | 2119740-1 | TAG, IDENTIFICATION | 67 |
| - | 2 | 2 | | 2168078-1 | SCREW, DRIVE, RH, RoHS, 2 x .188 | 66 |
| - | 1 | 1 | | 5-18022-5 | SCR, HEX HD CAP, M4 X 6.0 | 59 |
| - | 1 | 1 | | 1338685-1 | PAWL, FEED | 56 |
| - | 2 | 2 | | 1-2168083-0 | SCR, SKT HD CAP, RoHS, M4 X 10 | 53 |
| - | 1 | 1 | | 5018030-1 | NUT, HEX, REG, RoHS, M3 | 52 |
| - | 1 | 1 | | 811242-5 | BUMPER, HOLD DOWN | 51 |
| - | 1 | 1 | | 690753-2 | SPACER, TONKER | 50 |
| - | 1 | 2 | | 18023-9 | SCR, SKT HD CAP M4 X 6.0 | 49 |
| - | - | 1 | | 2119652-1 | FEED CAM, PRE FEED | 48 |
| - | 1 | 1 | | 1803602-1 | SCR, BHSC, RoHS (M8 X 25) | 41 |
| - | 1 | 1 | | 1752356-9 | SUPPORT, TERMINAL | 34 |
| - | 2 | 2 | | 2079383-5 | SCR, BHSC, RoHS (M4 X 20) | 33 |
| - | 2 | 2 | | 3-2844962-2 | SPACER, CYLINDRICAL, STRIP GUIDE | 30 |
| - | 1 | 1 | | 2844992-1 | ASSEMBLY, STRIP GUIDE | 29 |
| - | 1 | 1 | | 455888-3 | SPACER, CRIMPER | 28 |
| - | 1 | 1 | | 1320928-2 | STRIP GUIDE | 24 |
| - | 1 | 1 | | 2168083-2 | SCR, SKT HD CAP, RoHS, M4 X 8.0 | 21 |
| - | 2 | 2 | | 1-18028-2 | WASHER, FLAT, REG M4 | 20 |
| - | 1 | 1 | | 2119533-1 | STRIPPER, SIDE FEED | 19 |
| - | 1 | 1 | | 2119806-1 | INSERT, SHEAR | 13 |
| - | 1 | 1 | | 3-22280-3 | SPRING, COMPRESSION | 12 |
| - | 1 | 1 | | 1-356885-4 | STOP, SHEAR | 11 |
| - | 1 | 1 | | 2119805-1 | SHEAR HOLDER, FRONT | 10 |
| - | 1 | 1 | | 1803095-6 | FLOATING SHEAR, FRONT | 9 |
| - | 1 | 1 | | 1-1633923-3 | ANVIL, COMBINATION | 8 |
| - | - | - | | - | - | 7 |
| - | - | - | | - | - | 6 |
| - | 1 | 1 | | 1-2119757-0 | DEPRESSOR, SHEAR | 5 |
| - | 1 | 1 | | 2-238011-1 | BLOCK, CRIMPER SPACER | 4 |
| - | 1 | 1 | | 6-2119784-0 | CRIMPER, INSULATION O PREMIUM | 3 |
| - | 1 | 1 | | 455888-4 | SPACER, CRIMPER | 2 |
| - | 1 | 1 | | 7-456408-0 | CRIMPER, WIRE PREMIUM | 1 |

PACIFIC VERSION
Shown on sheets 3 of 4 & 4 of 4
(Atlantic version shown on sheets 1 of 4 & 2 of 4)

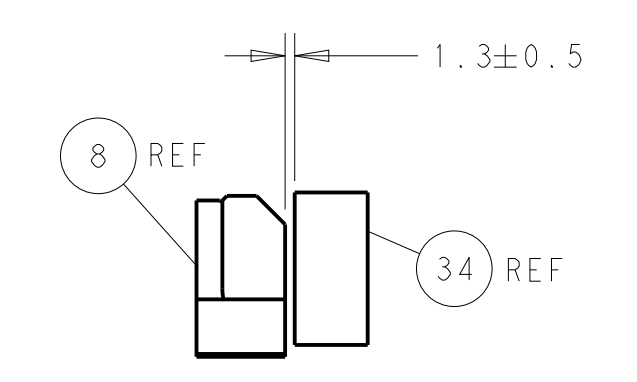
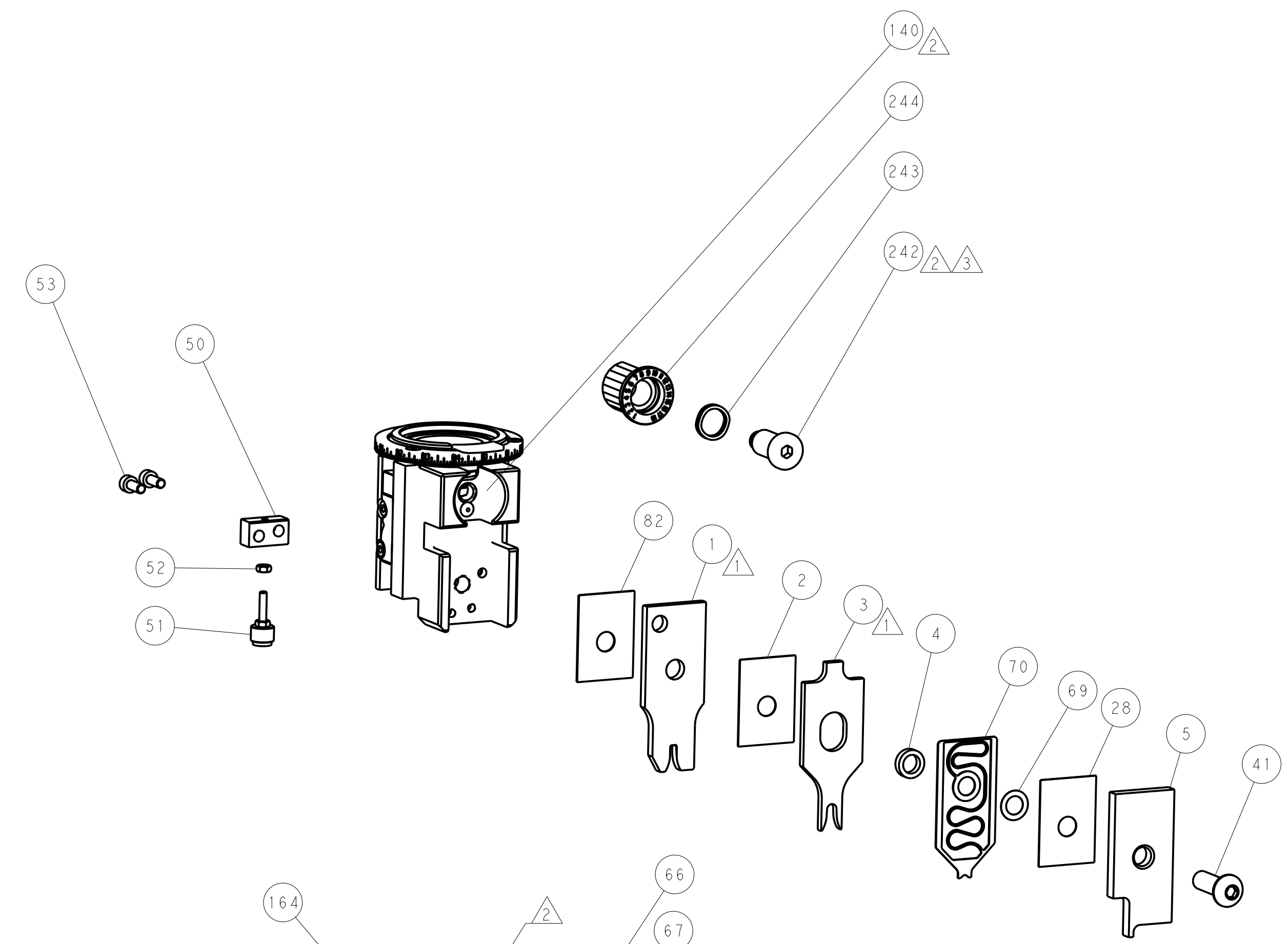
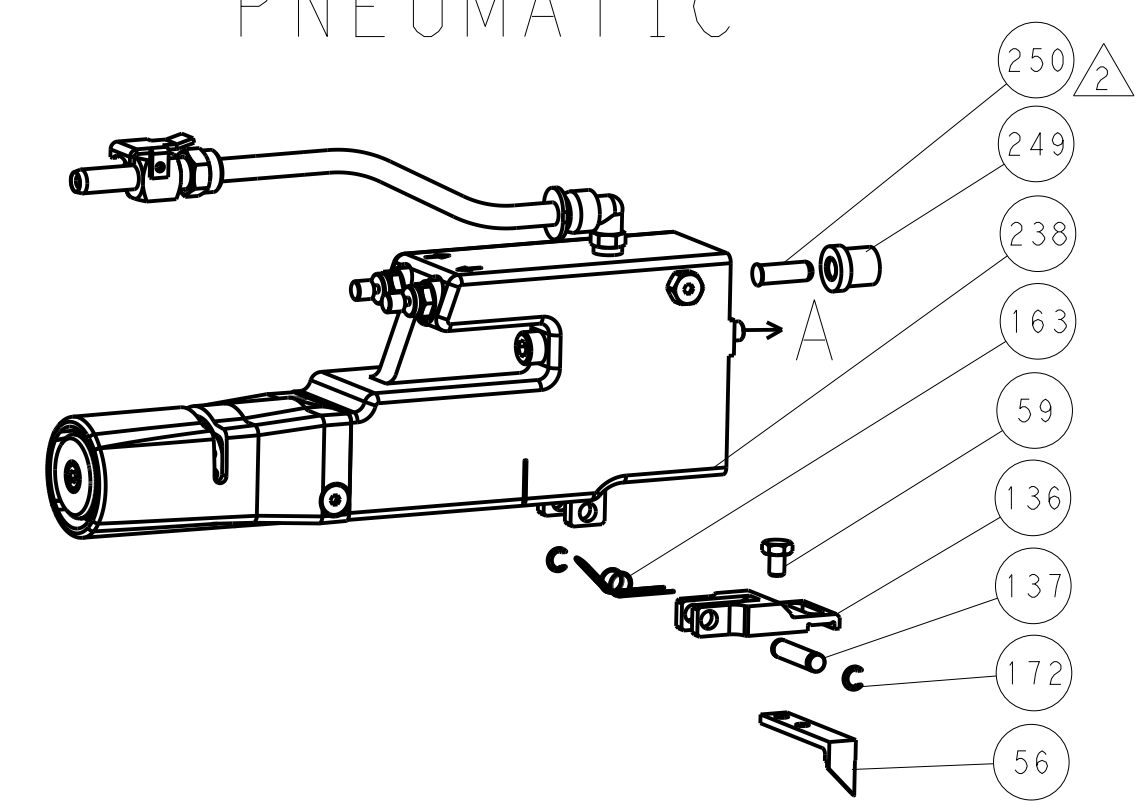
| | | | | | | | | | | | |
|----------------|--|--|--|-------------------------|--|--------------------------|--|------------------------|--|----------------------------------|--|
| DIMENSIONS: mm | | TOLERANCES UNLESS OTHERWISE SPECIFIED: | | DRAWN: Y. YIN 04JUN2014 | | CHK: G. BAILEY 04JUN2014 | | APVD: H. GUO 04JUN2014 | | NAME: Ocean Side Feed Applicator | |
| 0 PLC ± | | 1 PLC ± | | 2 PLC ± | | 3 PLC ± | | 4 PLC ± | | SIZE: A1 | |
| ANGLES | | FINISH | | WEIGHT | | SCALE: 1:2 | | SHEET: 3 OF 4 | | REV: C | |
| MATERIAL | | FINISH | | WEIGHT | | SCALE: 1:2 | | SHEET: 3 OF 4 | | REV: C | |

| LOC | | DIST | | REVISIONS | | | |
|-----|----|------|-----|-------------|------|-----|------|
| A | 66 | P | LTM | DESCRIPTION | DATE | OWN | APVD |
| | | - | | SEE SHEET 1 | | | |

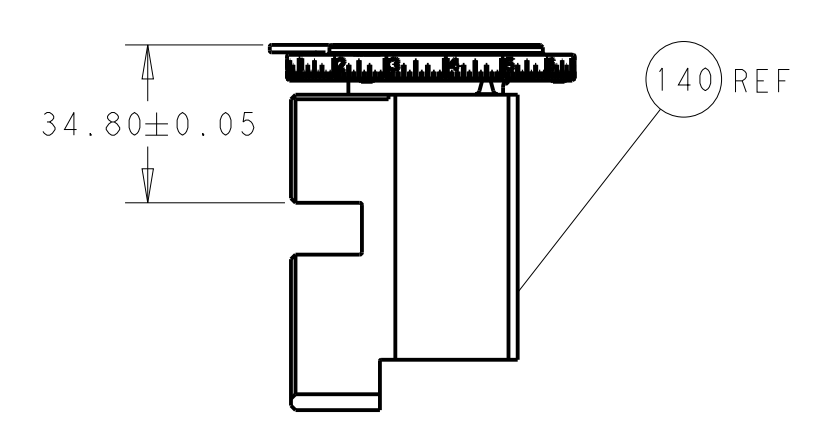
FEED TYPE MECHANICAL



PNEUMATIC

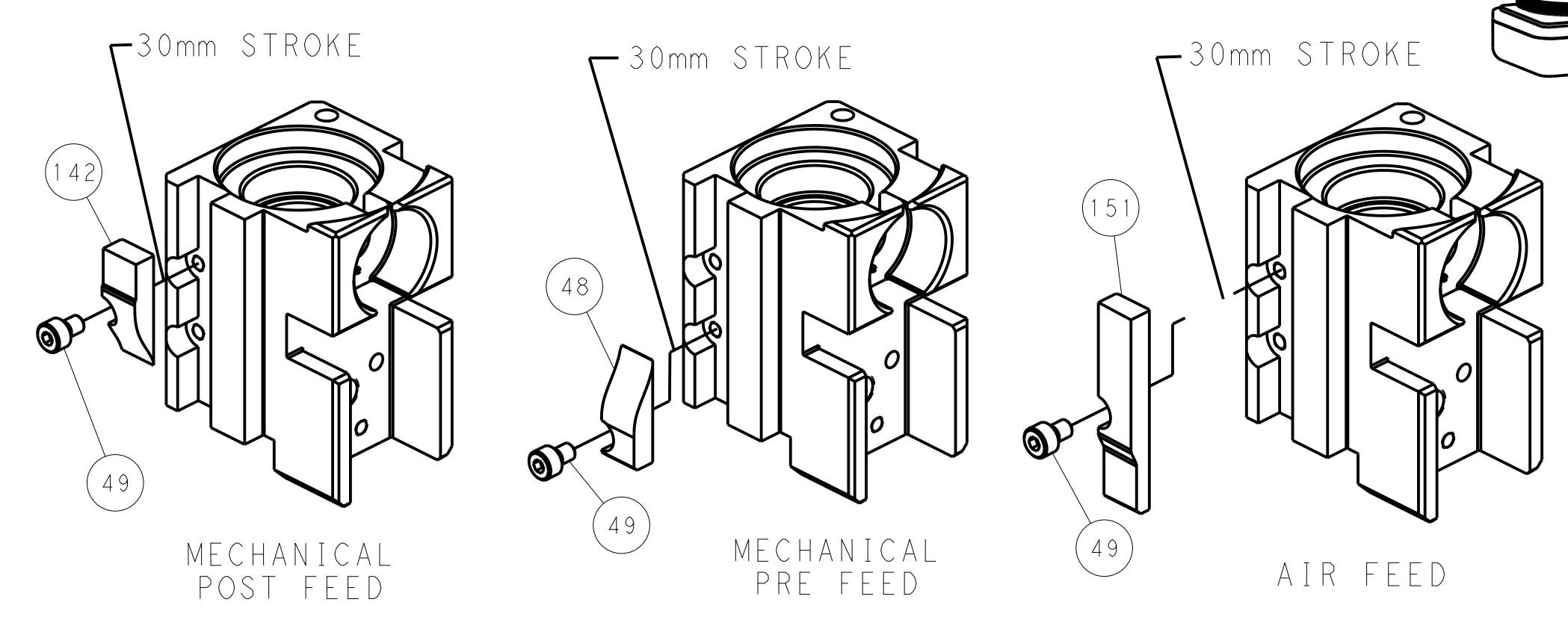


TERMINAL SUPPORT LOCATION



RAM SET-UP

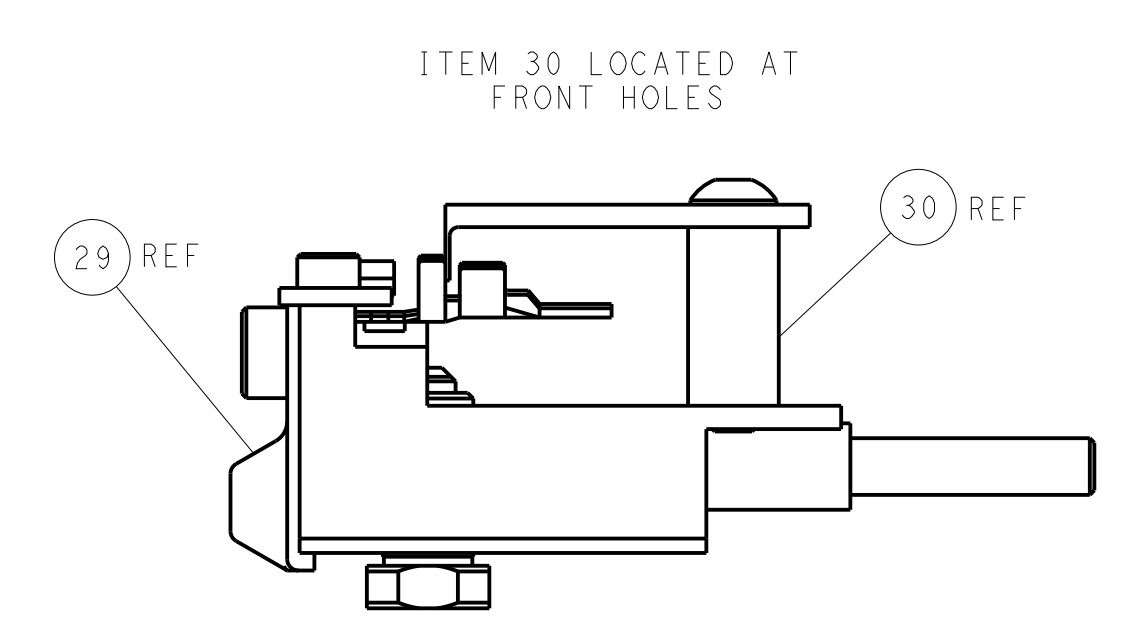
CAM POSITIONS



MECHANICAL POST FEED

MECHANICAL PRE FEED

AIR FEED



FEED TRACK POSITION GUIDE BY INSULATION BARREL

PACIFIC VERSION
 Shown on sheets 3 of 4 & 4 of 4
 (Atlantic version shown on sheets 1 of 4 & 2 of 4)

| | | | | | | | |
|-------------|---------|--|---------|--------------------------|---------|--|---------------------------|
| DIMENSIONS: | | TOLERANCES UNLESS OTHERWISE SPECIFIED: | | DWN: Y. YIN 04JUN2014 | | TE Connectivity | |
| mm | 0 PLC ± | 1 PLC ± | 2 PLC ± | 3 PLC ± | 4 PLC ± | 5 PLC ± | Harrisburg, PA 17105-3608 |
| MATERIAL: | | FINISH: | | CHK: G. BAILEY 04JUN2014 | | NAME: Ocean Side Feed Applicator | |
| | | | | APVD: H. GUO 04JUN2014 | | PRODUCT SPEC: | |
| | | | | | | APPLICATION SPEC: | |
| | | | | | | SIZE: CAGE CODE: DRAWING NO: | |
| | | | | | | RESTRICTED TO: | |
| | | | | WEIGHT: | | A 00779 C=2266314 | |
| | | | | ANGLES: | | Customer Accessible Production Drawing | |
| | | | | | | SCALE: 1:2 SHEET 4 OF 4 REV C | |

Mouser Electronics

Authorized Distributor

Click to View Pricing, Inventory, Delivery & Lifecycle Information:

[TE Connectivity:](#)

[2266314-2](#)