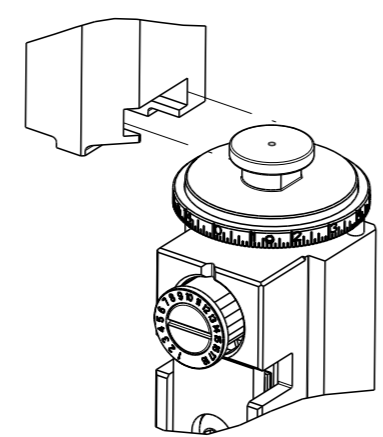


| PART NUMBER | REVISION | DESCRIPTION                      | FEED TYPE  |
|-------------|----------|----------------------------------|------------|
| 2266271-1   | B        | FINE CRIMP HEIGHT ADJUST         | MECHANICAL |
| 2266271-2   | B        | FINE CRIMP HEIGHT ADJUST         | PNEUMATIC  |
| 7-2266271-1 | B        | MECHANICAL AND CRIMP TOOLING KIT | MECHANICAL |
| 7-2266271-2 | B        | PNEUMATIC AND CRIMP TOOLING KIT  | PNEUMATIC  |
| 7-2266271-7 | A        | CRIMP TOOLING KIT                | -          |

ATLANTIC VERSION TERMINATOR  
INTERFACE ADAPTER



| APPLICATOR DATA |                |      |
|-----------------|----------------|------|
| CRIMP           | SIZE           | TYPE |
| WIRE            | 3.05 mm [.120] | F    |
| INSUL           | 4.83 mm [.190] | F    |

APPLICATOR INSTRUCTIONS  
408-35042

| TERMINAL DATA: TE TERMINAL                    |             | TE CRIMP SPECIFICATION       |             |
|---|-------------|------------------------------|-------------|
| TERMINAL NAME: DYNAMIC D4200 CONTACT (L SIZE) |             |                              |             |
| WIRE STRIP LENGTH                             |             | INSULATION DIAMETER RANGE    |             |
| 4.90-5.40 mm [.193-.213 IN]                   |             | ∅2.90-4.20 mm [.114-.165 IN] |             |
| TERMINAL APPLICATION SPECIFICATION            | 114-5369    |                              |             |
| TERMINALS APPLIED                             |             |                              |             |
| TE TERMINAL                                   | TE TERMINAL | TE TERMINAL                  | TE TERMINAL |
| 1-1747416-2                                   | 1747416-2   | 1747415-2                    |             |

| WIRE SIZE                         | CRIMP HEIGHT mm [INCH]      | CRIMP HEIGHT REFERENCE SETTING |
|-----------------------------------|-----------------------------|--------------------------------|
| 12AWG OR 3.09-3.62mm <sup>2</sup> | 2.17+/-0.05 [0.085+/-0.002] | 5.3                            |
| 14AWG OR 2.08-2.18mm <sup>2</sup> | 1.90+/-0.05 [0.075+/-0.002] | 8.0                            |

- 1. RECOMMENDED SPARE PARTS
- 2. REFER TO SUPPLIED INSTRUCTION SHEET FOR CLEANING, LUBRICATION AND STORAGE OF APPLICATOR.
- 3. APPLY PART NUMBER 2-23419-6 LOCTITE TO THREADS OF ITEM 242.
- 4. CRIMP HEIGHT REFERENCE SETTING WAS THE SETTING USED WHEN THE APPLICATOR WAS QUALIFIED AT THE FACTORY. ADJUSTMENT MAY BE NECESSARY WHEN RUNNING APPLICATOR IN THE FIELD.
- 5. TERMINAL LUBRICANT IS RECOMMENDED.
- 6. UNLESS SPECIFIED OTHERWISE TORQUE VALUES SHALL BE USED PER DOCUMENT, 101-35000.

\*WARNING  
ON INSTALLATION, SET WIRE DISC TO CRIMP HEIGHT REFERENCE SETTING FOR LARGEST WIRE SIZE. CRIMP HEIGHT REFERENCE SETTINGS GREATER THAN THE VALUE SHOWN MAY CAUSE DAMAGE TO THE CRIMP TOOLING, REFER TO THE INSTRUCTION SHEET FOR PROPER SETUP AND ADJUSTMENTS.

ATLANTIC VERSION  
Shown on sheets 1 of 4 & 2 of 4  
(Pacific version shown on sheets 3 of 4 & 4 of 4)

| LOC | DIST | REVISIONS |               |           |        |
|-----|------|-----------|---------------|-----------|--------|
|     |      | REV       | DATE          | BY        | CHK    |
| A   | 66   | A         | RELEASED      | 09AUG2016 | KH TE  |
|     |      | B         | ECR-18-018703 | 28NOV2016 | JAH CT |

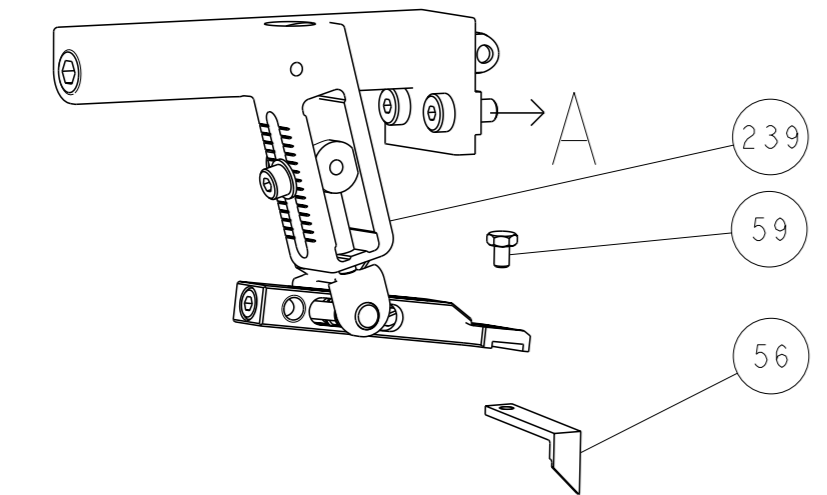
|   |     |     |     |     |             |                                     |     |
|---|-----|-----|-----|-----|-------------|-------------------------------------|-----|
| - | 1   | -   | 1   | -   | 2119640-1   | PUSH ROD, AIR FEED                  | 250 |
| - | 1   | -   | 1   | -   | 1803259-1   | BUSHING, FLANGED                    | 249 |
| - | 1   | -   | 1   | -   | 2119641-1   | FEED CAM, AIR FEED                  | 248 |
| - | 1   | 1   | 1   | 1   | 2119082-7   | CAM, SNAIL, INSULATION ADJUSTMENT   | 244 |
| - | 1   | 1   | 1   | 1   | 2079764-1   | WASHER, WAVE SPRING, CREST-TO-CREST | 243 |
| 3 | -   | 1   | 1   | 1   | 2119083-1   | RETAINER, INSULATION DIAL           | 242 |
| - | 1   | 1   | 1   | 1   | 7-18023-7   | SCR, SKT HD CAP M3 X 4.0            | 241 |
| - | -   | 1   | -   | 1   | 2119580-1   | MECHANICAL FEED ASSEMBLY            | 239 |
| - | 1   | -   | 1   | -   | 2063440-1   | AIR FEED MODULE                     | 238 |
| - | 2   | -   | 2   | -   | 21045-3     | RING, RETAIN, EXTERN, 3/16 CRESCENT | 172 |
| - | REF | REF | REF | REF | 994970-2    | COUNTER, MAGNETIC                   | 164 |
| - | 1   | -   | 1   | -   | 240638-1    | SPRING, FEED FINGER                 | 163 |
| - | 1   | -   | 1   | -   | 3-23627-7   | PIN, RETAIN, GRVD, 3/16 X .854      | 137 |
| - | 1   | -   | 1   | -   | 2119799-1   | HOLDER, FEED FINGER, AF             | 136 |
| 5 | -   | 1   | 1   | 1   | 2119955-1   | ASSY, LUBRICATOR, SIDE FEED         | 113 |
| - | 1   | 1   | 1   | 1   | 2844908-1   | SCREW, LOCKING                      | 99  |
| - | 1   | 1   | 1   | 1   | 2844907-1   | POST, LOCKING                       | 98  |
| - | 1   | 1   | 1   | 1   | 455888-5    | SPACER, CRIMPER                     | 82  |
| - | 1   | 1   | 1   | 1   | 22278-8     | SPRING, COMPRESSION                 | 77  |
| - | 1   | 1   | 1   | 1   | 854769-6    | HOLDER, INS                         | 74  |
| - | 1   | 1   | 1   | 1   | 1803607-1   | DOCUMENTATION PACKAGE               | 71  |
| - | 1   | 1   | 1   | 1   | 2119740-1   | TAG, IDENTIFICATION                 | 67  |
| - | 2   | 2   | 2   | 2   | 2168078-1   | SCREW, DRIVE, RH, RoHS, 2 x .188    | 66  |
| - | 1   | 1   | 1   | 1   | 2168083-2   | SCR, SKT HD CAP, RoHS, M4 X 8.0     | 60  |
| - | 1   | 1   | 1   | 1   | 5-18022-5   | SCR, HEX HD CAP, M4 X 6.0           | 59  |
| - | 1   | 1   | 1   | 1   | 21028-2     | PIN, SLOTTED SPRING .062 X .250     | 58  |
| - | 1   | 1   | 1   | 1   | 1338683-8   | FEED PAWL                           | 56  |
| - | 4   | 4   | 4   | 4   | 2168083-3   | SCR, SKT HD CAP, RoHS, M4 X 12.0    | 54  |
| - | 2   | 2   | 2   | 2   | 1-2168083-0 | SCR, SKT HD CAP, RoHS, M4 X 10      | 53  |
| - | 1   | 1   | 1   | 1   | 5018030-1   | NUT, HEX, REG, RoHS, M3             | 52  |
| - | 1   | 1   | 1   | 1   | 811242-5    | BUMPER, HOLD DOWN                   | 51  |
| - | 1   | 1   | 1   | 1   | 690753-2    | SPACER, TONKER                      | 50  |
| - | 1   | 2   | 1   | 2   | 18023-9     | SCR, SKT HD CAP M4 X 6.0            | 49  |
| - | -   | 1   | -   | 1   | 2119652-1   | FEED CAM, PRE FEED                  | 48  |
| - | -   | 1   | -   | 1   | 2119653-1   | FEED CAM, POST FEED                 | 47  |
| - | 1   | 1   | 1   | 1   | 1803583-9   | APPLICATOR BASIC ASSEMBLY, SF       | 46  |
| - | 1   | 1   | 1   | 1   | 1803515-1   | RAM ASSEMBLY, SF ATLANTIC           | 44  |
| - | 1   | 1   | 1   | 1   | 1803602-1   | SCR, BHSC, RoHS (M8 X 25)           | 41  |
| - | 1   | 1   | 1   | 1   | 1752356-3   | SUPPORT, TERMINAL                   | 34  |
| - | 2   | 2   | 2   | 2   | 2079383-5   | SCR, BHSC, RoHS (M4 X 20)           | 33  |
| - | 2   | 2   | 2   | 2   | 3-2844962-0 | SPACER, CYLINDRICAL, STRIP GUIDE    | 30  |
| - | 1   | 1   | 1   | 1   | 2844992-1   | ASSEMBLY, STRIP GUIDE               | 29  |
| - | 1   | 1   | 1   | 1   | 2-455888-3  | SPACER, CRIMPER                     | 28  |
| - | 1   | 1   | 1   | 1   | 1320928-6   | STRIP GUIDE                         | 24  |
| - | 1   | 1   | 1   | 1   | 2168083-2   | SCR, SKT HD CAP, RoHS, M4 X 8.0     | 21  |
| - | 2   | 2   | 2   | 2   | 1-18028-2   | WASHER, FLAT, REG M4                | 20  |
| - | 1   | 1   | 1   | 1   | 2119533-1   | STRIPPER, SIDE FEED                 | 19  |
| 1 | -   | 1   | 1   | 1   | 2119806-1   | INSERT, SHEAR                       | 13  |
| - | 1   | 1   | 1   | 1   | 3-22280-3   | SPRING, COMPRESSION                 | 12  |
| - | 1   | 1   | 1   | 1   | 1-356885-4  | STOP, SHEAR                         | 11  |
| 1 | -   | 1   | 1   | 1   | 2119805-1   | SHEAR HOLDER, FRONT                 | 10  |
| 1 | -   | 1   | 1   | 1   | 1803095-1   | FLOATING SHEAR, FRONT               | 9   |
| 1 | 1   | 2   | 2   | 1   | 1-1633924-2 | ANVIL, COMBINATION                  | 8   |
| - | -   | -   | -   | -   | -           | -                                   | 7   |
| - | -   | -   | -   | -   | -           | -                                   | 6   |
| - | 1   | 1   | 1   | 1   | 1-2119780-1 | DEPRESSOR, SHEAR                    | 5   |
| - | 1   | 1   | 1   | 1   | 1-238011-7  | BLOCK, CRIMPER SPACER               | 4   |
| 1 | 1   | 2   | 2   | 1   | 3-1633961-1 | CRIMPER, INSULATION F PREMIUM       | 3   |
| - | 1   | 1   | 1   | 1   | 455888-5    | SPACER, CRIMPER                     | 2   |
| 1 | 1   | 2   | 2   | 1   | 2-456409-3  | CRIMPER, WIRE .120 "F" PREMIUM      | 1   |

| DIMENSIONS: |        | TOLERANCES UNLESS OTHERWISE SPECIFIED: |   | OWN         |          | CHK         |          | APVD        |          | NAME        |          |
|-------------|--------|--|---|-------------|----------|-------------|----------|-------------|----------|-------------|----------|
| mm          | PLC    | ±                                      | ° | DATE        | BY       | DATE        | BY       | DATE        | BY       | DATE        | BY       |
|             | 0 PLC  | ±                                      | ° | 30 JUN 2016 | H. HUANG | 30 JUN 2016 | L. ZHANG | 30 JUN 2016 | L. ZHANG | 30 JUN 2016 | L. ZHANG |
|             | 1 PLC  | ±                                      | ° |             |          |             |          |             |          |             |          |
|             | 2 PLC  | ±                                      | ° |             |          |             |          |             |          |             |          |
|             | 3 PLC  | ±                                      | ° |             |          |             |          |             |          |             |          |
|             | 4 PLC  | ±                                      | ° |             |          |             |          |             |          |             |          |
|             | ANGLES | ±                                      | ° |             |          |             |          |             |          |             |          |
|             | FINISH | ±                                      | ° |             |          |             |          |             |          |             |          |

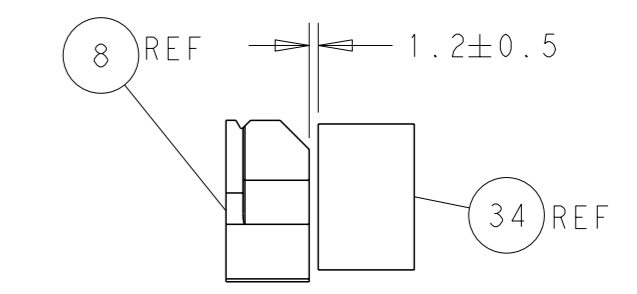
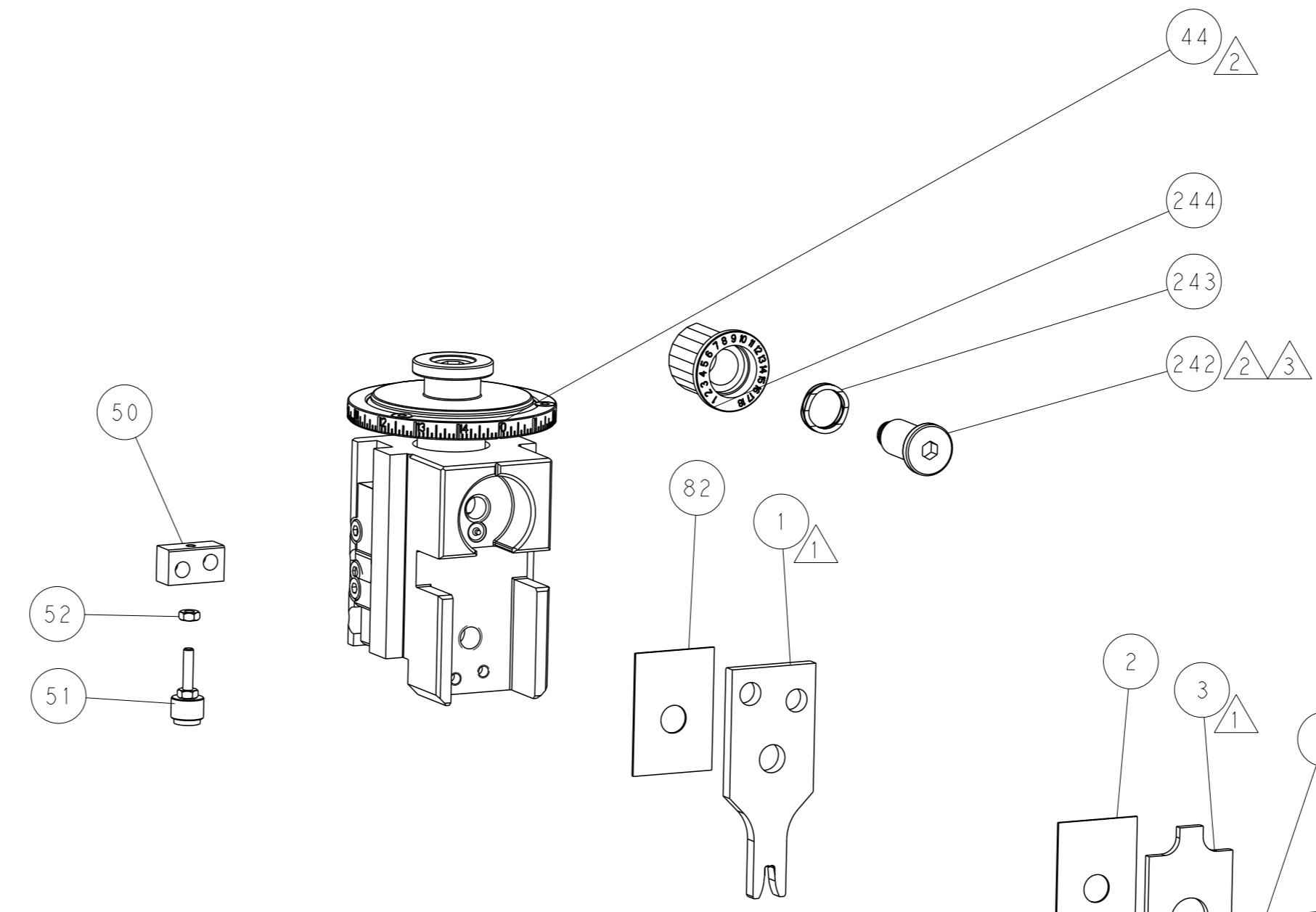
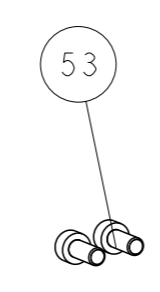
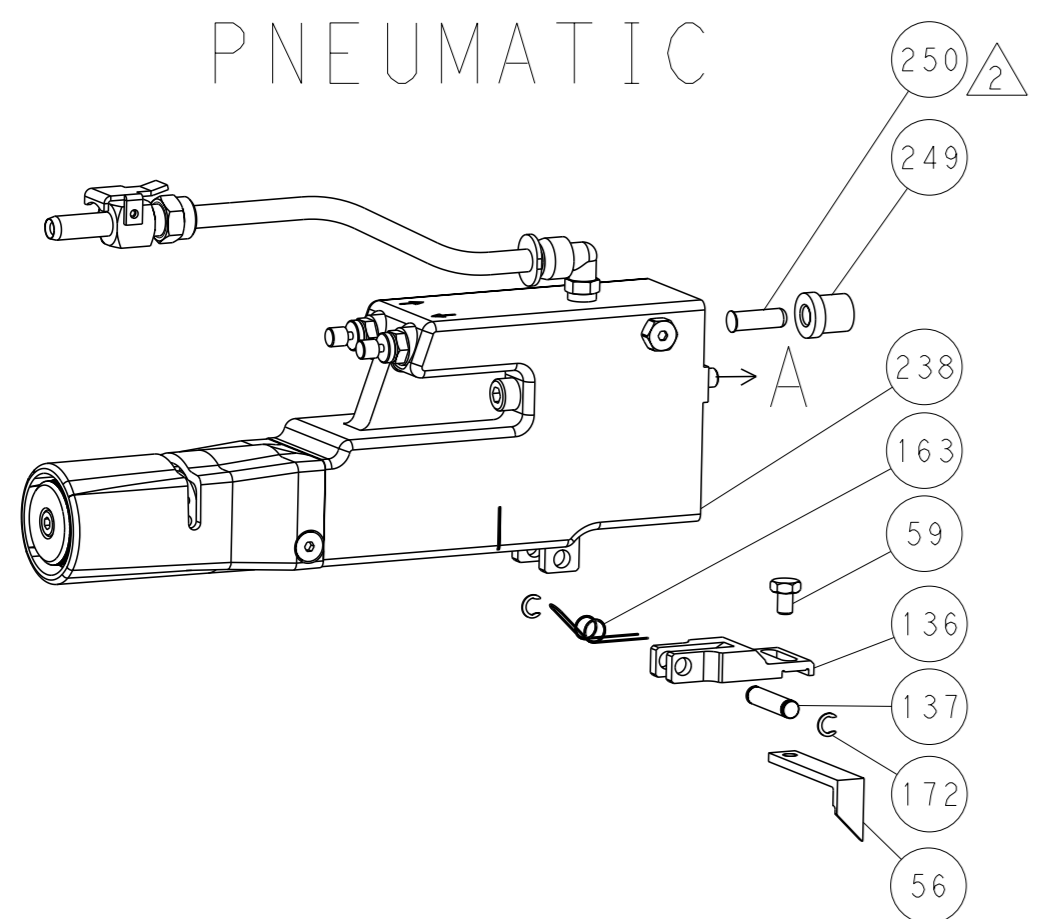
Customer Accessible Production Drawing SCALE 1:2 SHEET 1 OF 4 REV B

| LOC | DIST | REVISIONS   |      |     |      |
|-----|------|-------------|------|-----|------|
| A   | 66   | REV         | DATE | OWN | APVD |
| -   | -    | SEE SHEET 1 | -    | -   | -    |

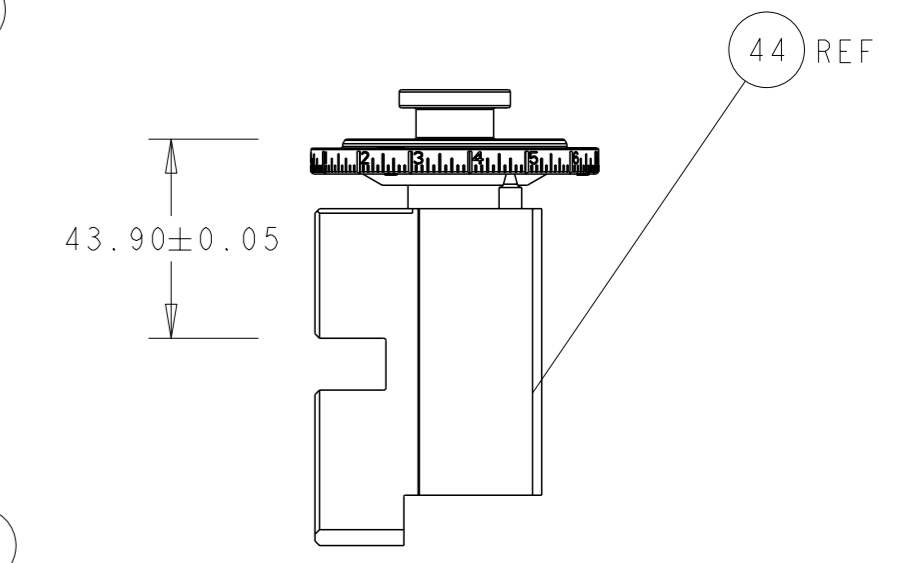
# FEED TYPE MECHANICAL



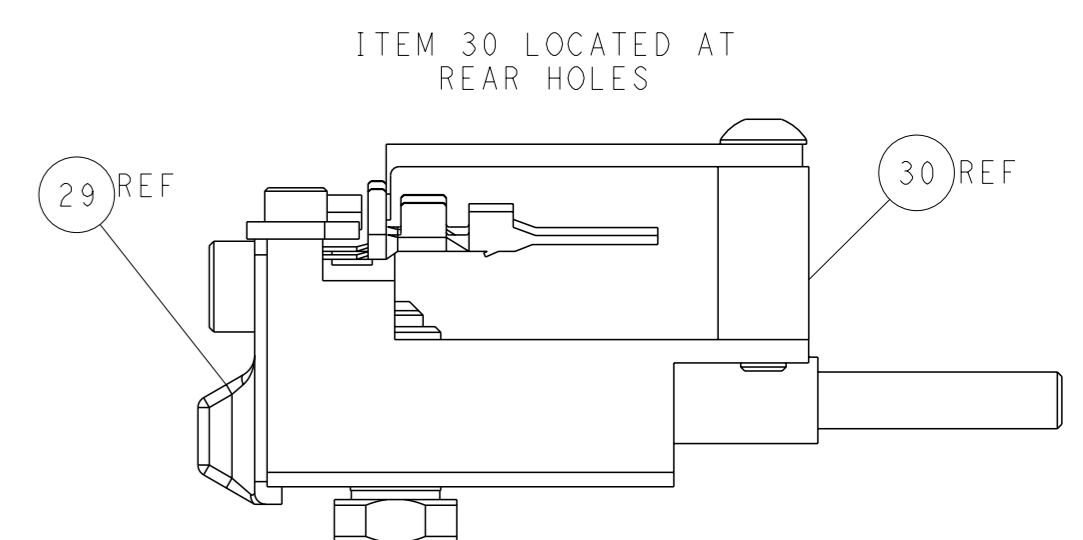
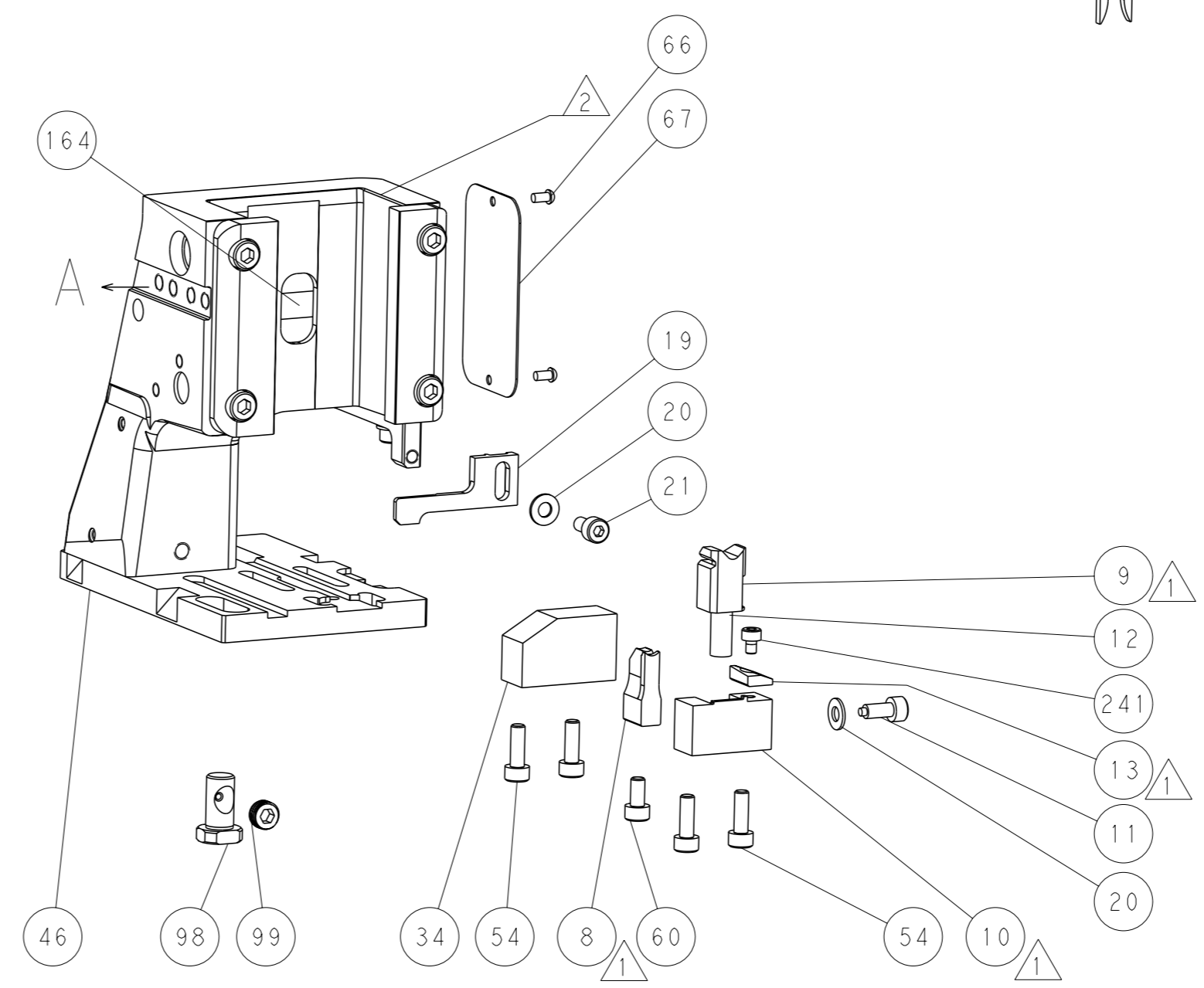
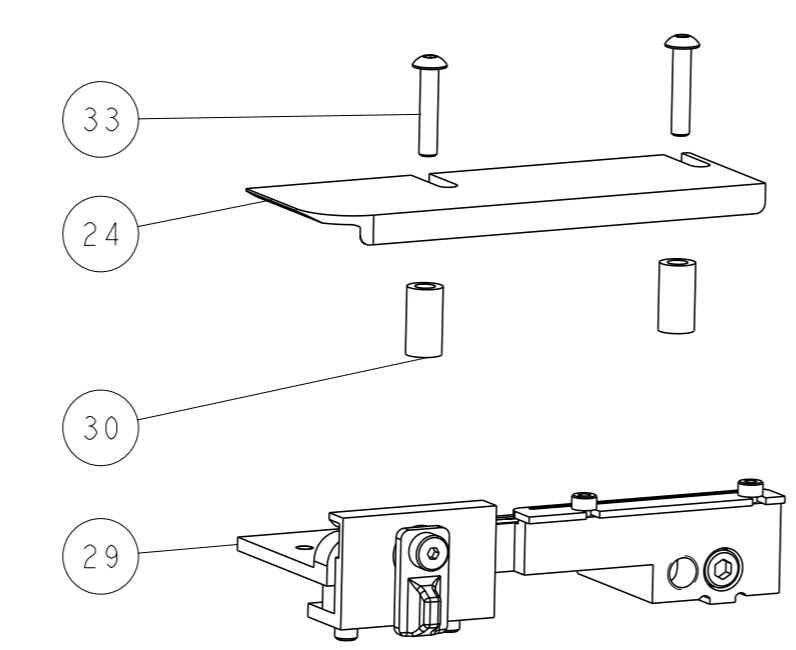
# PNEUMATIC



TERMINAL SUPPORT LOCATION

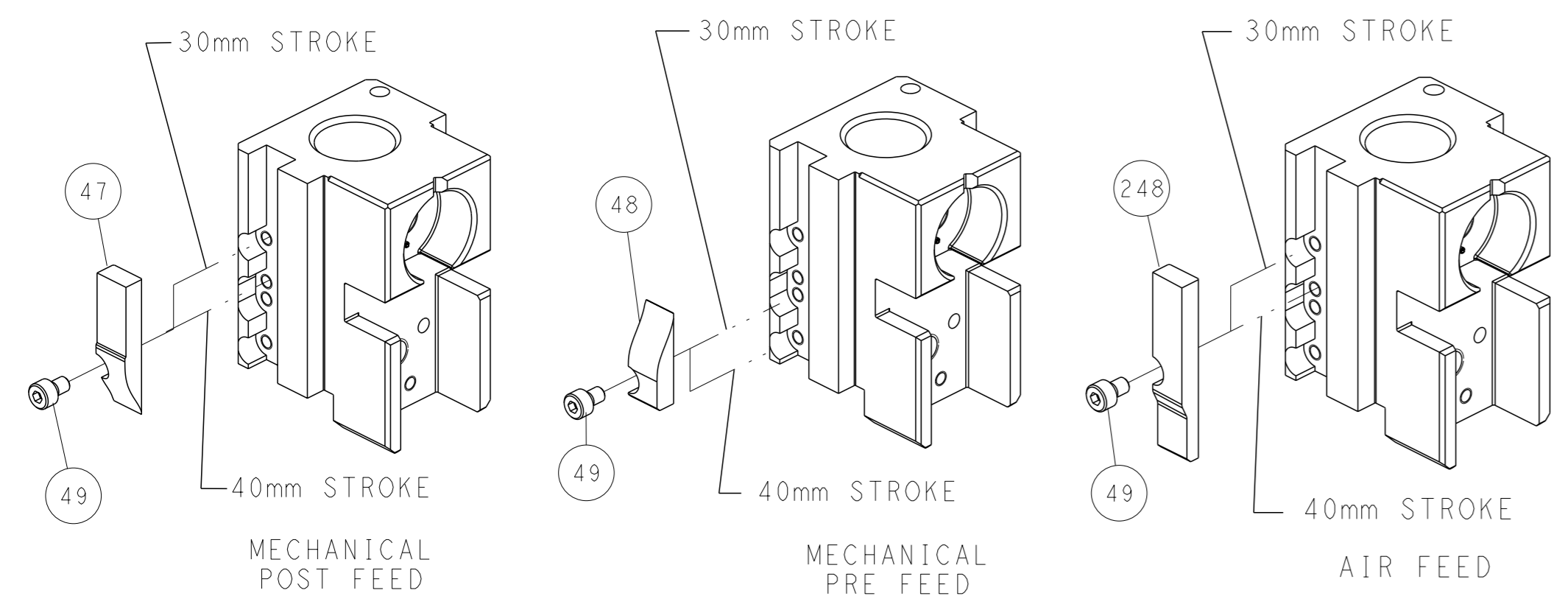


RAM SET-UP



FEED TRACK POSITION GUIDE BY INSULATION BARREL

# CAM POSITIONS

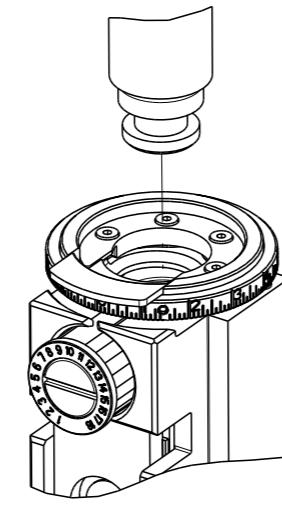


**ATLANTIC VERSION**  
 Shown on sheets 1 of 4 & 2 of 4  
 (Pacific version shown on sheets 3 of 4 & 4 of 4)

|   |  |  |   |
|---|--|--|---|
| DIMENSIONS: mm<br>TOLERANCES UNLESS OTHERWISE SPECIFIED:<br>0 PLC ±<br>1 PLC ±<br>2 PLC ±<br>3 PLC ±<br>4 PLC ±<br>ANGLES ± |  | OWN: H. HUANG 30 JUN 2016<br>CHK: L. ZHANG 30 JUN 2016<br>APVD: L. ZHANG 30 JUN 2016<br>NAME: Ocean Side Feed Applicator<br>SIZE: A1<br>CAGE CODE: 00779<br>DRAWING NO: 2266271<br>SCALE: 1:2<br>SHEET: 2 of 4<br>REV: B | TE Connectivity<br>Harrisburg, PA 17105-3608<br>RESTRICTED TO<br>Customer Accessible Production Drawing |
|---|--|--|---|

| PART NUMBER | REVISION | DESCRIPTION              | FEED TYPE  |
|-------------|----------|--------------------------|------------|
| 2-2266271-1 | B        | FINE CRIMP HEIGHT ADJUST | MECHANICAL |
| 2-2266271-2 | B        | FINE CRIMP HEIGHT ADJUST | PNEUMATIC  |
| 7-2266271-7 | A        | CRIMP TOOLING KIT        | -          |

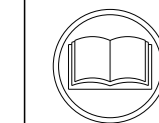
PACIFIC VERSION TERMINATOR  
INTERFACE ADAPTER



| APPLICATOR DATA                      |                |      |
|--------------------------------------|----------------|------|
| CRIMP                                | SIZE           | TYPE |
| WIRE                                 | 3.05 mm (.120) | F    |
| INSUL                                | 4.83 mm (.190) | F    |
| APPLICATOR INSTRUCTIONS<br>408-35042 |                |      |

|  |             |   |             |
|--|-------------|---|-------------|
| TERMINAL DATA: TE TERMINAL                       |             | TE CRIMP SPECIFICATION                                    |             |
| TERMINAL NAME: DYNAMIC D4200 CONTACT (L SIZE)    |             |   |             |
| WIRE STRIP LENGTH<br>4.90-5.40 mm (.193-.213 IN) |             | INSULATION DIAMETER RANGE<br>Ø2.90-4.20 mm (.114-.165 IN) |             |
| TERMINAL APPLICATION SPECIFICATION               | 114-5369    | -   | -           |
| TERMINALS APPLIED                                |             |   |             |
| TE TERMINAL                                      | TE TERMINAL | TE TERMINAL   | TE TERMINAL |
| 1-1747416-2                                      | 1747416-2   | 1747415-2   |             |

| WIRE SIZE                         | CRIMP HEIGHT mm [INCH]     | CRIMP HEIGHT REFERENCE SETTING |
|-----------------------------------|----------------------------|--------------------------------|
| 12AWG OR 3.09-3.62mm <sup>2</sup> | 2.17+/-0.05 [.085+/- .002] | 5.3                            |
| 14AWG OR 2.08-2.18mm <sup>2</sup> | 1.90+/-0.05 [.075+/- .002] | 8.0                            |



- △ RECOMMENDED SPARE PARTS
  - △ REFER TO SUPPLIED INSTRUCTION SHEET FOR CLEANING, LUBRICATION AND STORAGE OF APPLICATOR.
  - △ APPLY PART NUMBER 2-23419-6 LOCTITE TO THREADS OF ITEM 242.
  - △ CRIMP HEIGHT REFERENCE SETTING WAS THE SETTING USED WHEN THE APPLICATOR WAS QUALIFIED AT THE FACTORY. ADJUSTMENT MAY BE NECESSARY WHEN RUNNING APPLICATOR IN THE FIELD.
  - △ TERMINAL LUBRICANT IS RECOMMENDED.
6. UNLESS SPECIFIED OTHERWISE TORQUE VALUES SHALL BE USED PER DOCUMENT, 101-35000.

**\*WARNING**  
ON INSTALLATION, SET WIRE DISC TO CRIMP HEIGHT REFERENCE SETTING FOR LARGEST WIRE SIZE. CRIMP HEIGHT REFERENCE SETTINGS GREATER THAN THE VALUE SHOWN MAY CAUSE DAMAGE TO THE CRIMP TOOLING, REFER TO THE INSTRUCTION SHEET FOR PROPER SETUP AND ADJUSTMENTS.

PACIFIC VERSION  
Shown on sheets 3 of 4 & 4 of 4  
(Atlantic version shown on sheets 1 of 4 & 2 of 4)

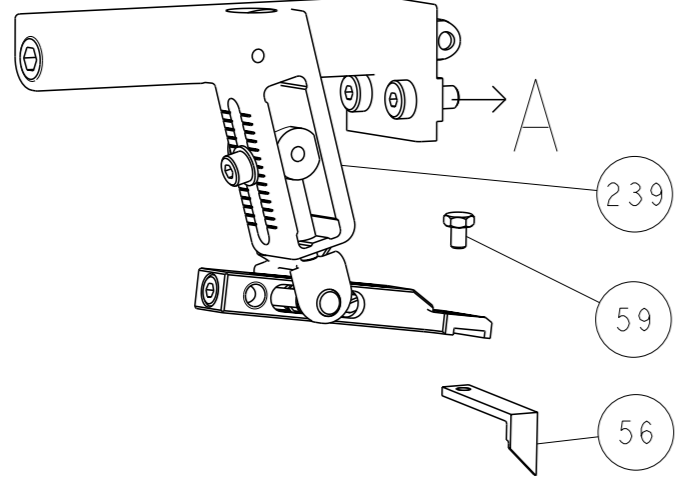
| SET UP GAUGE | LOC | DIST | REVISIONS |             |    |      |
|--------------|-----|------|-----------|-------------|----|------|
| 2119599-1    | A   | 66   | REV       | DATE        | BY | APPV |
|              |     |      | -         | SEE SHEET 1 | -  | -    |

|   |     |     |             |                                     |     |
|---|-----|-----|-------------|-------------------------------------|-----|
| - | 1   | -   | 2119640-1   | PUSH ROD, AIR FEED                  | 250 |
| - | 1   | -   | 1803259-1   | BUSHING, FLANGED                    | 249 |
| - | 1   | 1   | 2119082-7   | CAM, SNAIL, INSULATION ADJUSTMENT   | 244 |
| - | 1   | 1   | 2079764-1   | WASHER, WAVE SPRING, CREST-TO-CREST | 243 |
| △ | 1   | 1   | 2119083-1   | RETAINER, INSULATION DIAL           | 242 |
| - | 1   | 1   | 7-18023-7   | SCR, SKT HD CAP M3 X 4.0            | 241 |
| - | -   | 1   | 2119580-1   | MECHANICAL FEED ASSEMBLY            | 239 |
| - | 1   | -   | 2063440-1   | AIR FEED MODULE                     | 238 |
| - | 2   | -   | 21045-3     | RING, RETAIN, EXTERN, 3/16 CRESCENT | 172 |
| - | REF | REF | 994970-2    | COUNTER, MAGNETIC                   | 164 |
| - | 1   | -   | 240638-1    | SPRING, FEED FINGER                 | 163 |
| - | 1   | -   | 2119641-2   | FEED CAM, AIR FEED                  | 151 |
| - | 1   | 1   | 2168083-8   | SCR, SKT HD CAP, RoHS, M4 X 16      | 144 |
| - | 4   | 4   | 2168083-9   | SCR, SKT HD CAP, RoHS, M4 X 20      | 143 |
| - | -   | 1   | 2119653-2   | FEED CAM, POST FEED                 | 142 |
| - | 1   | 1   | 1-1803583-0 | APPLICATOR BASIC ASSEMBLY, SF       | 141 |
| - | 1   | 1   | 1803516-1   | RAM ASSEMBLY, SF PACIFIC            | 140 |
| - | 1   | -   | 3-23627-7   | PIN, RETAIN, GRVD, 3/16 X .854      | 137 |
| - | 1   | -   | 2119799-1   | HOLDER, FEED FINGER, AF             | 136 |
| △ | 1   | 1   | 2119955-1   | ASSY, LUBRICATOR, SIDE FEED         | 113 |
| - | 1   | 1   | 2844908-1   | SCREW, LOCKING                      | 99  |
| - | 1   | 1   | 2844907-1   | POST, LOCKING                       | 98  |
| - | 1   | 1   | 455888-5    | SPACER, CRIMPER                     | 82  |
| - | 1   | 1   | 22278-8     | SPRING, COMPRESSION                 | 77  |
| - | 1   | 1   | 854769-6    | HOLDER, INS                         | 74  |
| - | 1   | 1   | 1803607-1   | DOCUMENTATION PACKAGE               | 71  |
| - | 1   | 1   | 2119740-1   | TAG, IDENTIFICATION                 | 67  |
| - | 2   | 2   | 2168078-1   | SCREW, DRIVE, RH, RoHS, 2 x .188    | 66  |
| - | 1   | 1   | 5-18022-5   | SCR, HEX HD CAP, M4 X 6.0           | 59  |
| - | 1   | 1   | 21028-2     | PIN, SLOTTED SPRING .062 X .250     | 58  |
| - | 1   | 1   | 1338683-8   | FEED PAWL                           | 56  |
| - | 2   | 2   | 1-2168083-0 | SCR, SKT HD CAP, RoHS, M4 X 10      | 53  |
| - | 1   | 1   | 5018030-1   | NUT, HEX, REG, RoHS, M3             | 52  |
| - | 1   | 1   | 811242-5    | BUMPER, HOLD DOWN                   | 51  |
| - | 1   | 1   | 690753-2    | SPACER, TONKER                      | 50  |
| - | 1   | 2   | 18023-9     | SCR, SKT HD CAP M4 X 6.0            | 49  |
| - | -   | 1   | 2119652-1   | FEED CAM, PRE FEED                  | 48  |
| - | 1   | 1   | 1803602-1   | SCR, BHSC, RoHS (M8 X 25)           | 41  |
| - | 1   | 1   | 1752356-3   | SUPPORT, TERMINAL                   | 34  |
| - | 2   | 2   | 2079383-5   | SCR, BHSC, RoHS (M4 X 20)           | 33  |
| - | 2   | 2   | 3-2844962-0 | SPACER, CYLINDRICAL, STRIP GUIDE    | 30  |
| - | 1   | 1   | 2844992-1   | ASSEMBLY, STRIP GUIDE               | 29  |
| - | 1   | 1   | 2-455888-3  | SPACER, CRIMPER                     | 28  |
| - | 1   | 1   | 1320928-6   | STRIP GUIDE                         | 24  |
| - | 1   | 1   | 2168083-2   | SCR, SKT HD CAP, RoHS, M4 X 8.0     | 21  |
| - | 2   | 2   | 1-18028-2   | WASHER, FLAT, REG M4                | 20  |
| - | 1   | 1   | 2119533-1   | STRIPPER, SIDE FEED                 | 19  |
| △ | 1   | 1   | 2119806-1   | INSERT, SHEAR                       | 13  |
| - | 1   | 1   | 3-22280-3   | SPRING, COMPRESSION                 | 12  |
| - | 1   | 1   | 1-356885-4  | STOP, SHEAR                         | 11  |
| △ | 1   | 1   | 2119805-1   | SHEAR HOLDER, FRONT                 | 10  |
| △ | 1   | 1   | 1803095-1   | FLOATING SHEAR, FRONT               | 9   |
| △ | 1   | 1   | 1-1633924-2 | ANVIL, COMBINATION                  | 8   |
| - | -   | -   | -           | -                                   | 7   |
| - | -   | -   | -           | -                                   | 6   |
| - | 1   | 1   | 1-2119780-1 | DEPRESSOR, SHEAR                    | 5   |
| - | 1   | 1   | 1-238011-7  | BLOCK, CRIMPER SPACER               | 4   |
| △ | 1   | 1   | 3-1633961-1 | CRIMPER, INSULATION F PREMIUM       | 3   |
| - | 1   | 1   | 455888-5    | SPACER, CRIMPER                     | 2   |
| △ | 1   | 1   | 2-456409-3  | CRIMPER, WIRE .120 "F" PREMIUM      | 1   |

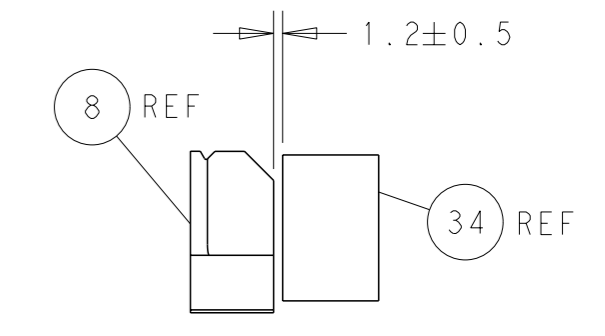
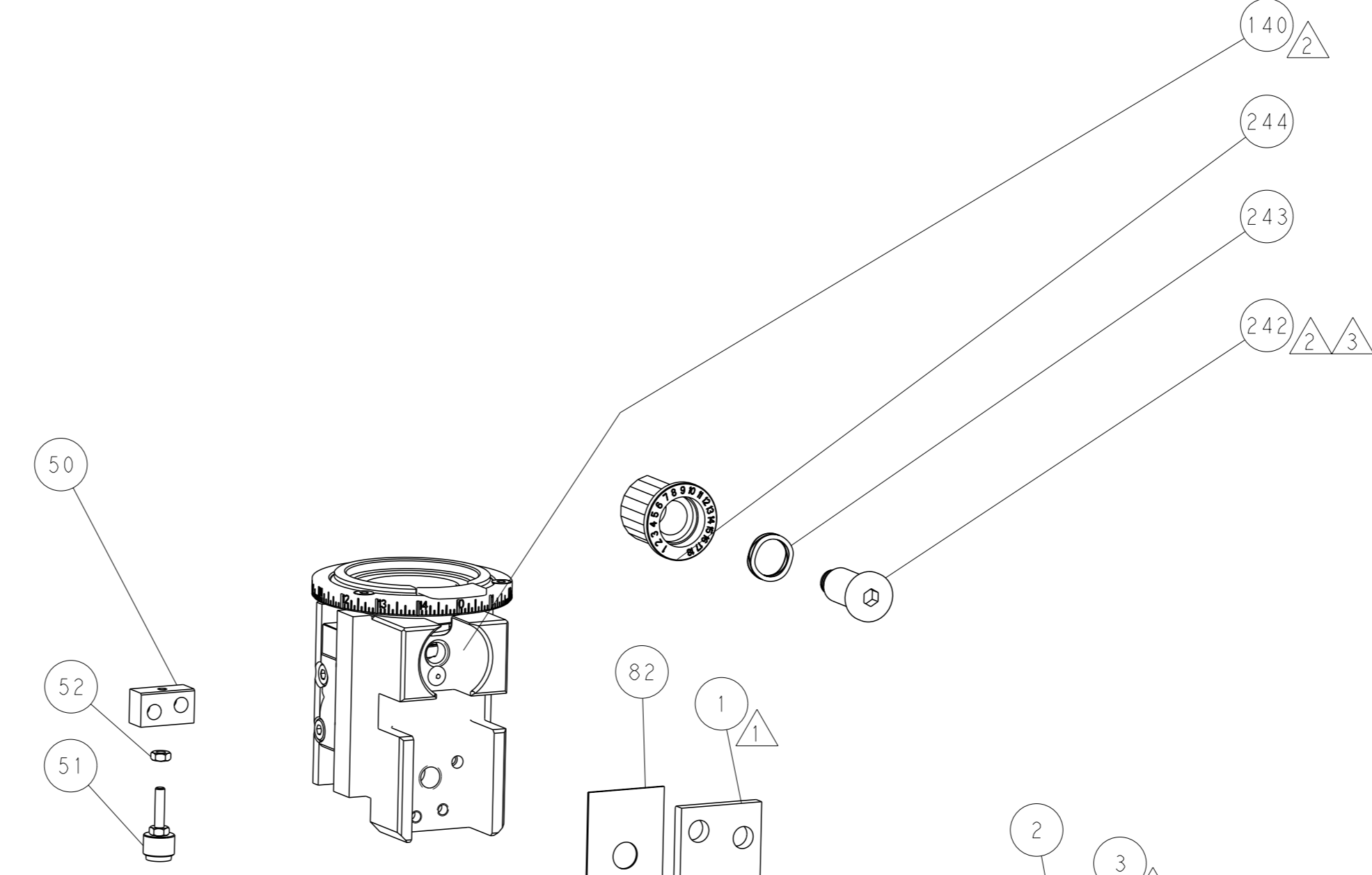
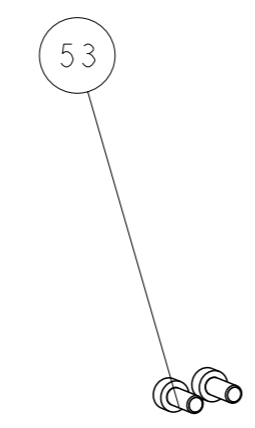
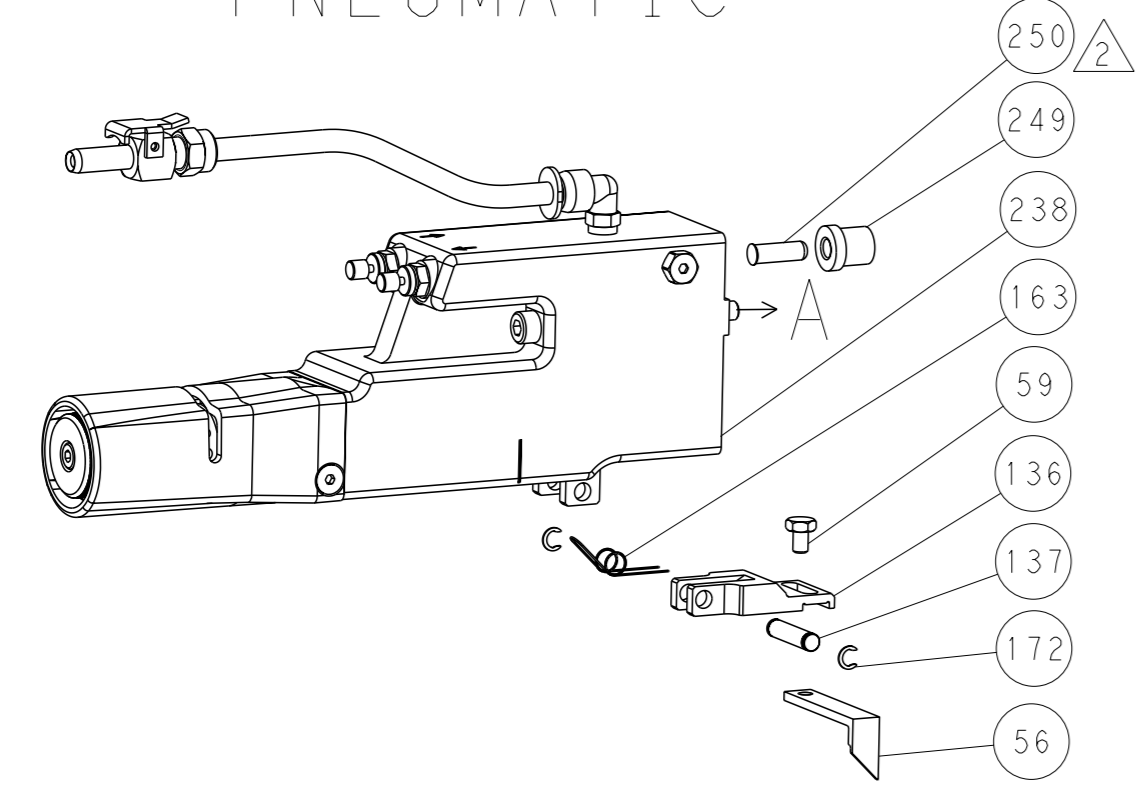
|  |   |  |   |                                       |                    |
|--|---|--|---|---------------------------------------|--------------------|
| THE DRAWING IS CONTROLLED DOCUMENT FROM THE PRODUCT DEVELOPMENT DEPARTMENT. IT IS SUBJECT TO CHANGE AND THE USER MUST CONTACT THE DESIGNATION SHOULD BE CONTACTED FOR THE LATEST REVISION. |   | OWN<br>H. HUANG<br>CHK<br>L. ZHANG<br>APVD<br>L. ZHANG | 30 JUN 2016<br>30 JUN 2016<br>30 JUN 2016 | NAME<br>Ocean Side Feed<br>Applicator |                    |
| DIMENSIONS:<br>mm  | TOLERANCES UNLESS OTHERWISE SPECIFIED:<br>0 PLC ±<br>1 PLC ±<br>2 PLC ±<br>3 PLC ±<br>4 PLC ±<br>ANGLES ±<br>FINISH | PRODUCT SPEC   | APPLICATION SPEC                          | SIZE<br>A1                            | CAGE CODE<br>00779 |
| MATERIAL   |   | WEIGHT   | SCALE<br>1:2                              | SHEET<br>3                            | REV<br>B           |

| LOC |    | DIST |     | REVISIONS   |      |     |      |
|-----|----|------|-----|-------------|------|-----|------|
| A   | 66 | P    | LYR | DESCRIPTION | DATE | OWN | APVD |
|     |    | -    |     | SEE SHEET 1 | -    | -   | -    |

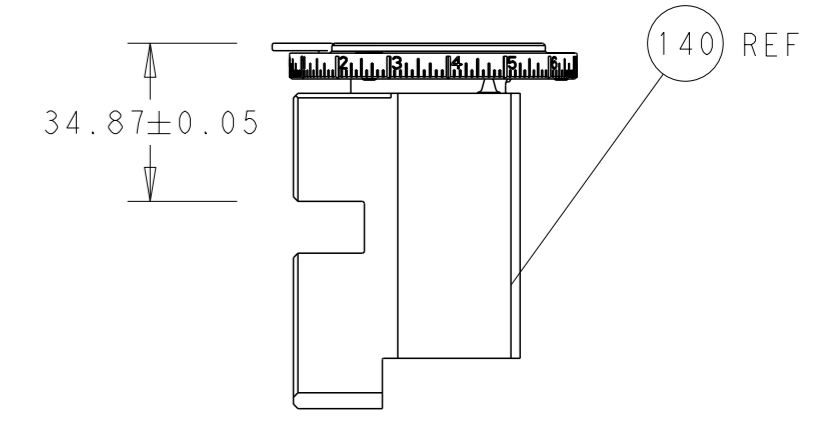
# FEED TYPE MECHANICAL



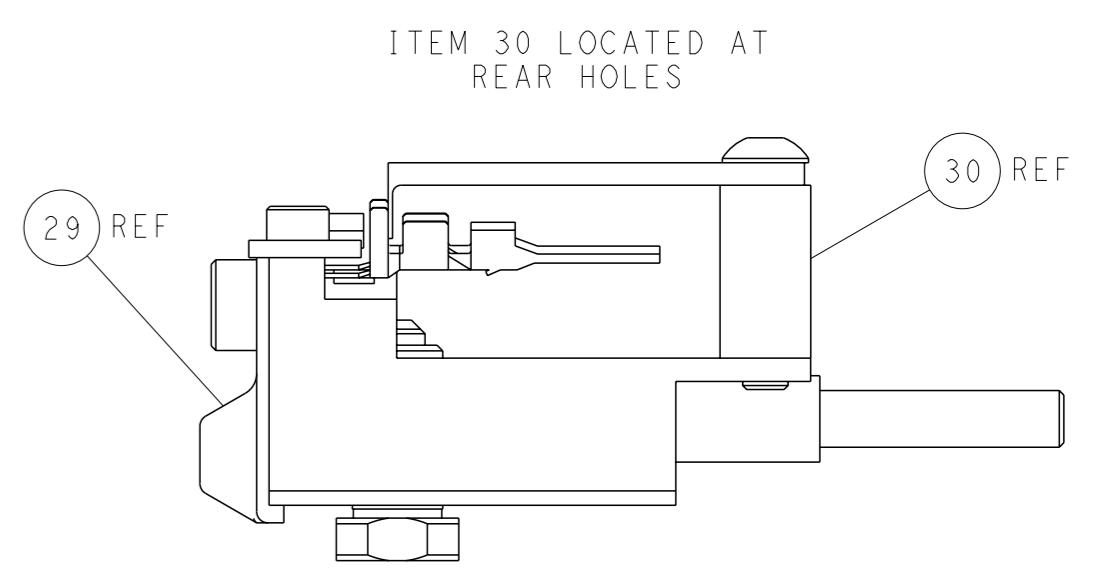
# PNEUMATIC



TERMINAL SUPPORT LOCATION

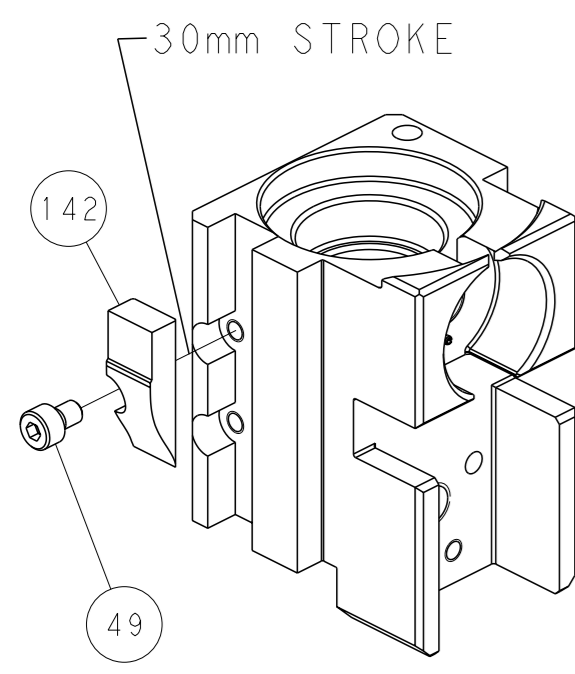


RAM SET-UP

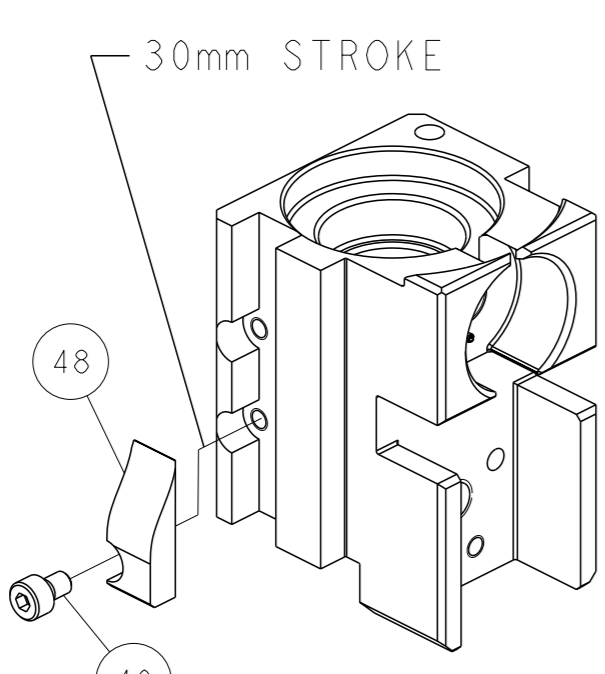


FEED TRACK POSITION GUIDE BY INSULATION BARREL

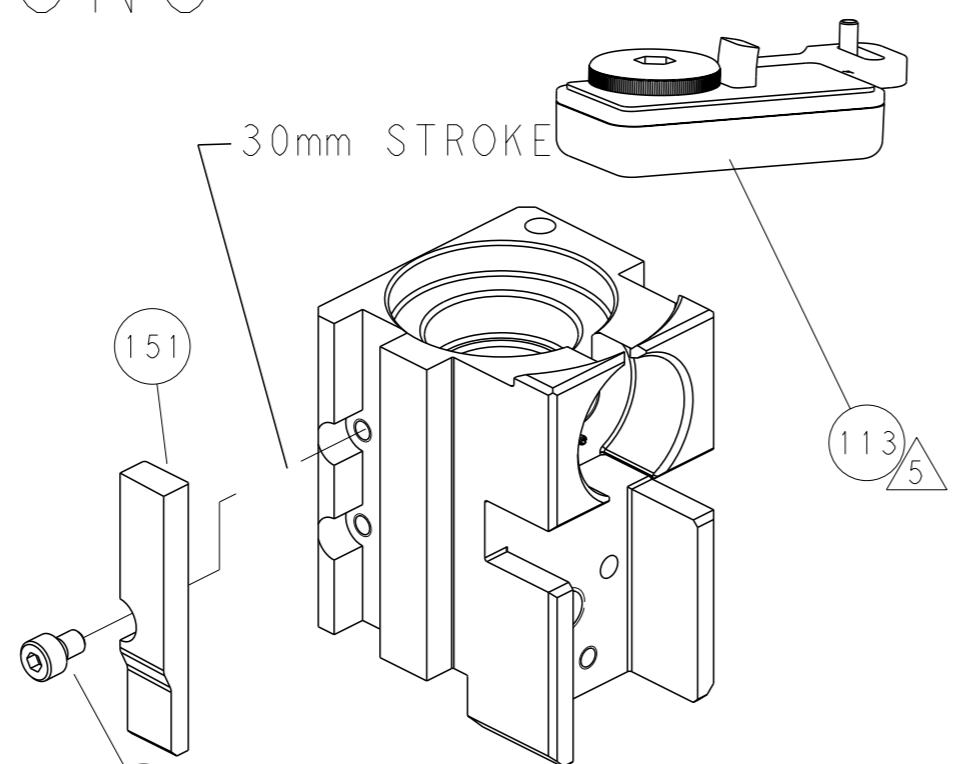
# CAM POSITIONS



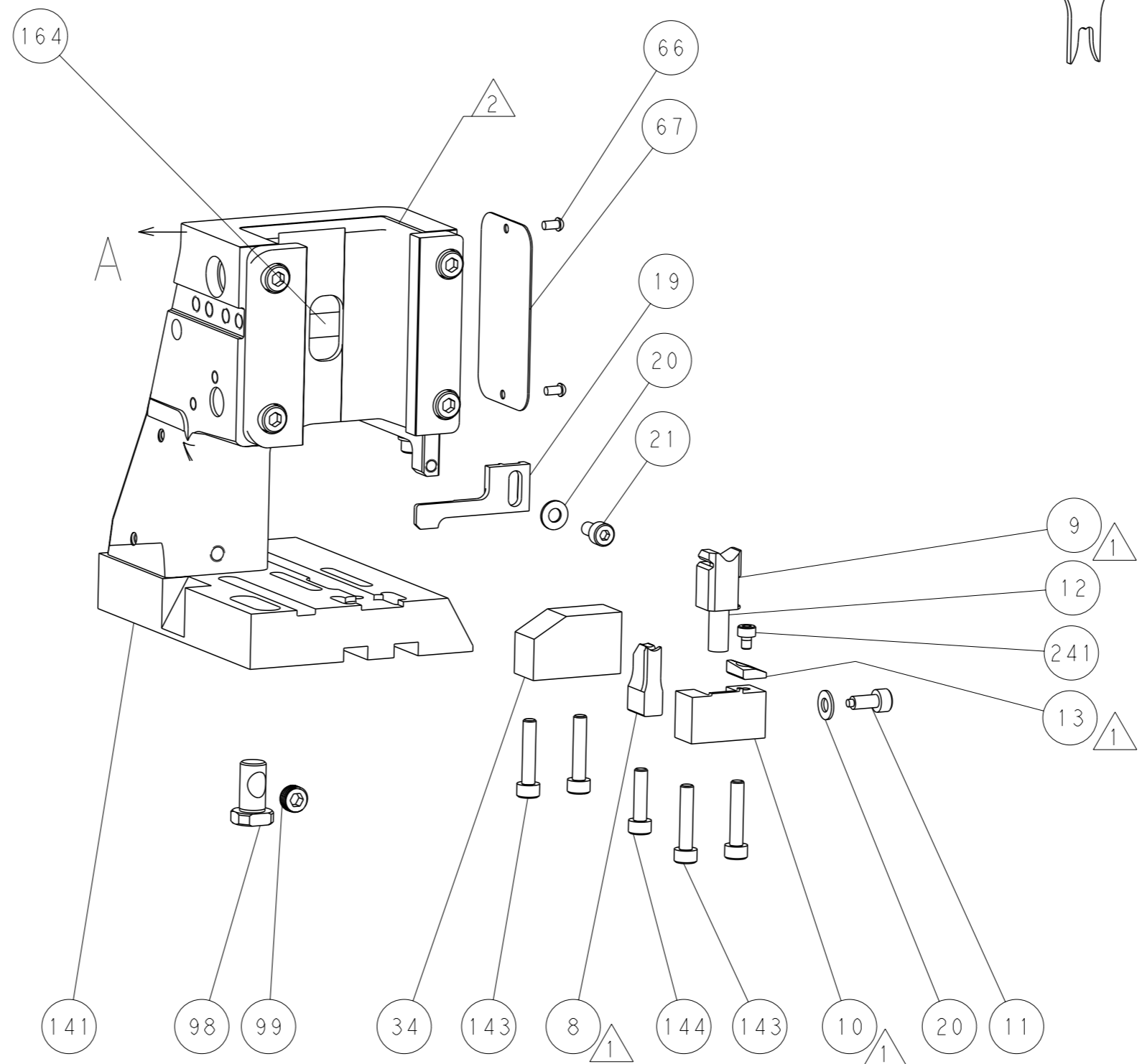
MECHANICAL POST FEED



MECHANICAL PRE FEED



AIR FEED



**PACIFIC VERSION**  
 Shown on sheets 3 of 4 & 4 of 4  
 (Atlantic version shown on sheets 1 of 4 & 2 of 4)

|                       |  |  |  |  |  |  |  |
|-----------------------|--|--|--|--|--|--|--|
| DIMENSIONS:<br>mm<br> |  | TOLERANCES UNLESS OTHERWISE SPECIFIED:<br>0 PLC ±<br>1 PLC ±<br>2 PLC ±<br>3 PLC ±<br>4 PLC ±<br>ANGLES FINISH ± |  | OWN: H. HUANG 30 JUN 2016<br>CHK: L. ZHANG 30 JUN 2016<br>APVD: L. ZHANG 30 JUN 2016<br>PRODUCT SPEC<br>APPLICATION SPEC<br>WEIGHT<br>Customer Accessible Production Drawing |  | NAME: Ocean Side Feed Applicator<br>SIZE: A1<br>CAGE CODE: 00779<br>DRAWING NO: C=2266271<br>SCALE: 1:2<br>SHEET: 4 of 4<br>REV: B |  |
|-----------------------|--|--|--|--|--|--|--|

# Mouser Electronics

Authorized Distributor

Click to View Pricing, Inventory, Delivery & Lifecycle Information:

[TE Connectivity:](#)

[2266271-2](#)