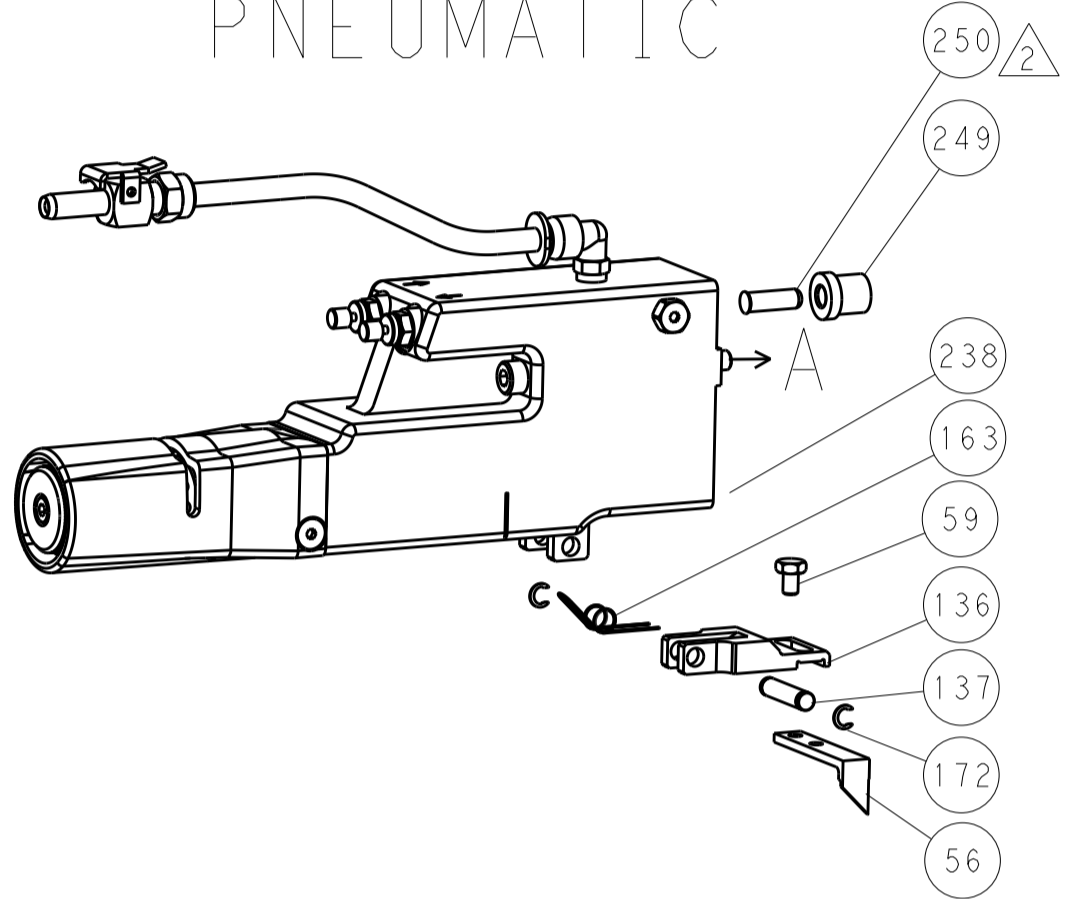


LOC		DIST		REVISIONS			
A	66	P	LTM	DESCRIPTION	DATE	OWN	APVD
		-		SEE SHEET 1			

FEED TYPE MECHANICAL



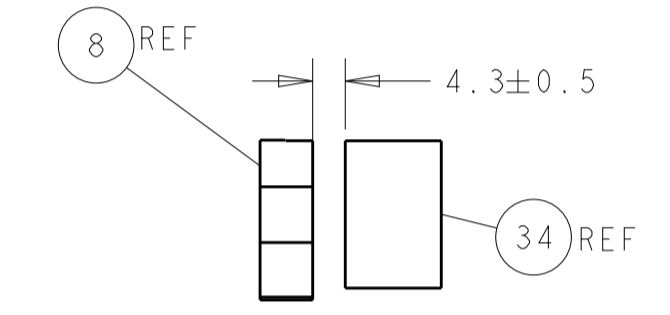
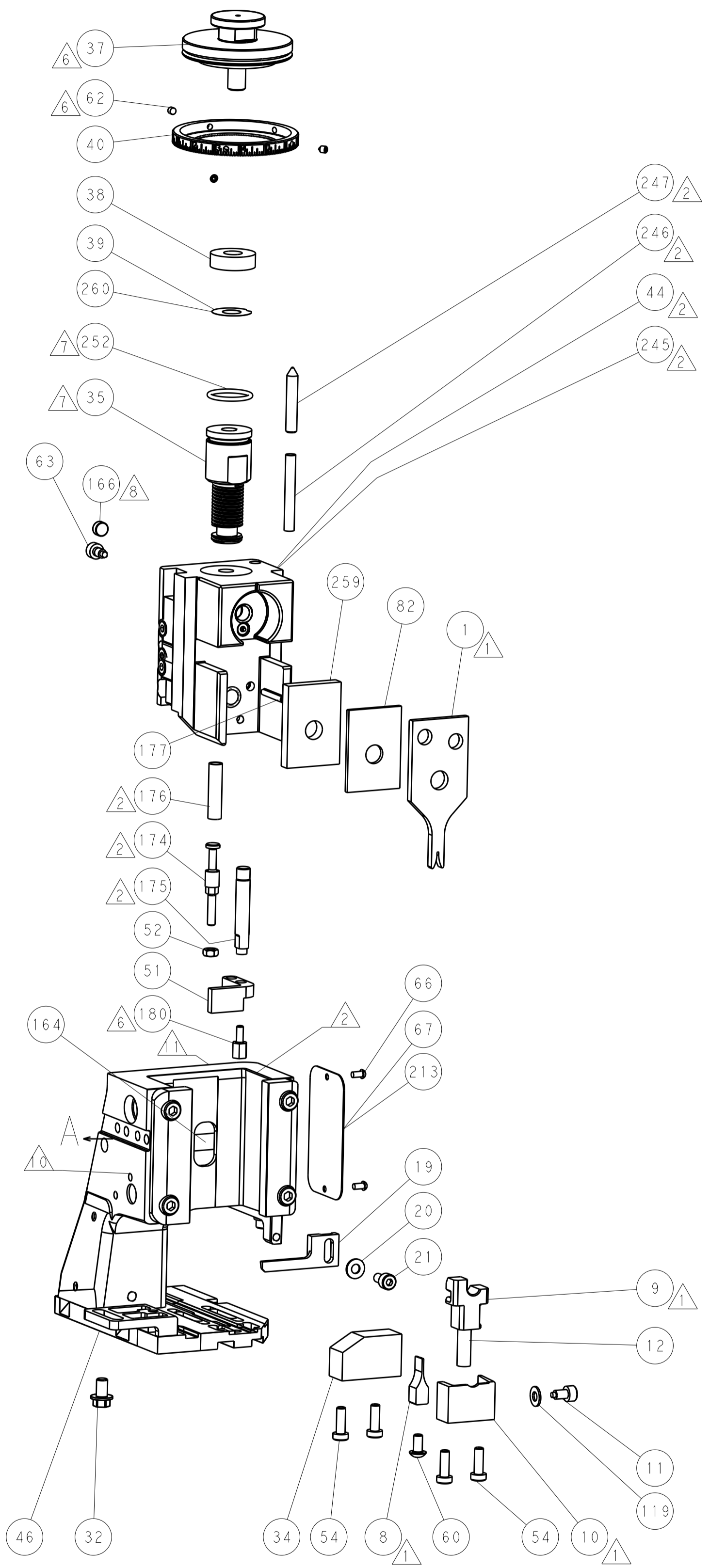
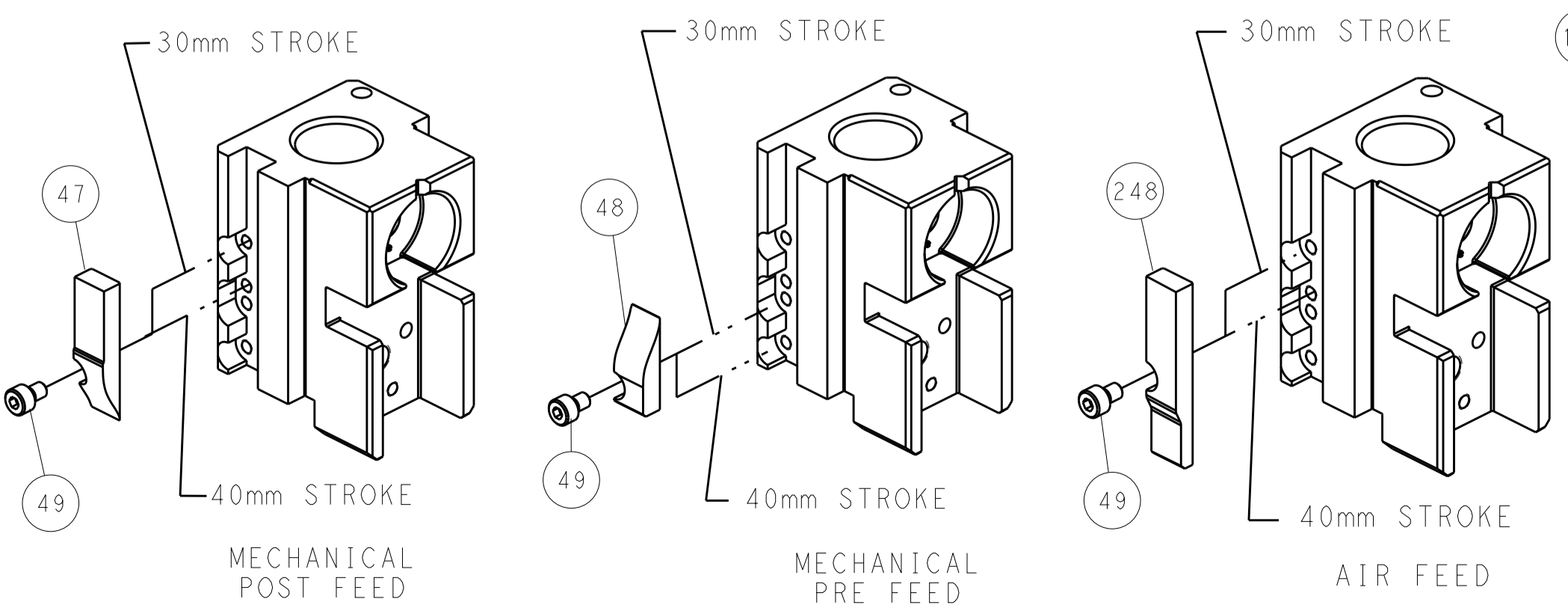
PNEUMATIC



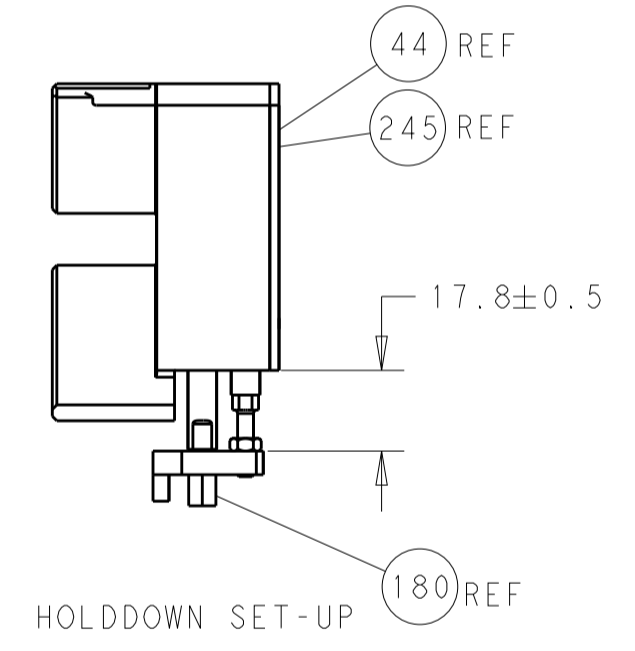
SERVO LATCH PLATE



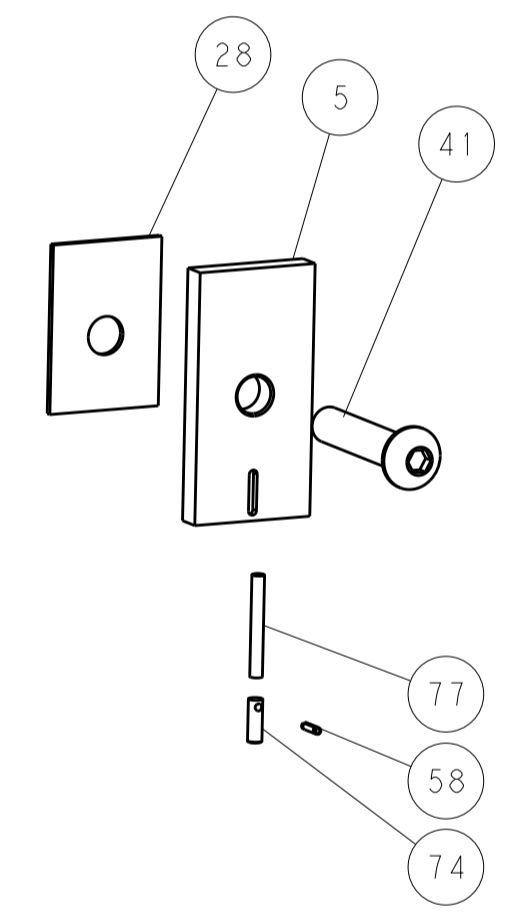
CAM POSITIONS



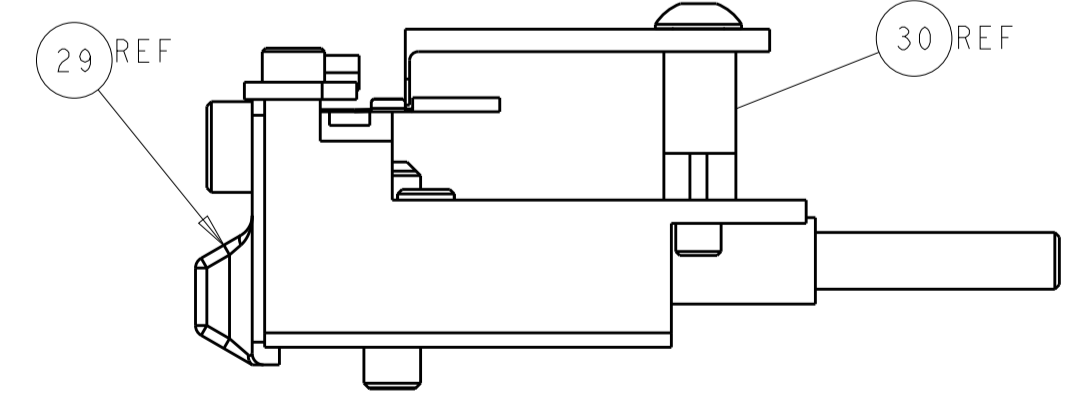
TERMINAL SUPPORT LOCATION



HOLDDOWN SET-UP



ITEM 30 LOCATED AT FRONT HOLES



FEED TRACK POSITION GUIDE BY WIRE BARREL

ATLANTIC VERSION
 Shown on sheets 1 of 4 & 2 of 4
 (Pacific version shown on sheets 3 of 4 & 4 of 4)

DIMENSIONS:		TOLERANCES UNLESS OTHERWISE SPECIFIED:		DWG: R. O. WILSON 24OCT2013		TE Connectivity	
mm	0 PLC ±	1 PLC ±	2 PLC ±	3 PLC ±	4 PLC ±	5 PLC ±	Harrisburg, PA 17105-3608
MATERIAL:		FINISH:		CHK: K. J. STAKEM 25OCT2013		NAME: Ocean Side Feed Applicator	
				APVD: T. L. ELBIN 25OCT2013		RESTRICTED TO:	
				PRODUCT SPEC:		SIZE: CAGE CODE: DRAWING NO:	
				APPLICATION SPEC:		A1 00779 ©=2266045	
				WEIGHT:		SCALE: 1:2 SHEET 2 OF 4 REV G	
				Customer Accessible Production Drawing		SHEETS 3 & 4 ARE NOT REQUIRED FOR ATLANTIC VERSION	

APPLICATOR STYLE CONVERSION CHART. Table with columns: CONVERT TO, PART NUMBERS REQUIRED. Rows include PNEUMATIC FEED, SERVO LATCH PLATE, MECHANICAL FEED, SMART APPLICATOR, MECHANICAL FEED, SERVO LATCH PLATE, SMART APPLICATOR, MECHANICAL FEED, PNEUMATIC FEED.

APPLICATOR DATA. Table with columns: CRIMP, SIZE, TYPE. Includes WIRE 0.80 mm [.031], INSUL, APPLICATOR INSTRUCTIONS 408-10389.

TERMINAL DATA: TE TERMINAL TE CRIMP SPECIFICATION. Includes WIRE STRIP LENGTH 2.86-3.80 mm, INSULATION DIAMETER RANGE, TERMINAL APPLICATION SPECIFICATION, and TERMINALS APPLIED table.

WIRE SIZE CRIMP HEIGHT mm [INCH] CRIMP HEIGHT REFERENCE SETTING. Table with rows for RG-179, RG-71 U/M, RG-62 U/M, 1.5C-2VCP.

- RECOMMENDED SPARE PARTS
GREASE BEARING SURFACES LIGHTLY
LUBRICATE DAILY PER THE APPLICATOR INSTRUCTION SHEET SUPPLIED WITH THE APPLICATOR.
APPLICATOR SPECIFIC DATA TO BE ENTERED INTO BLANK MEMORY CHIP AT ASSEMBLY...
ADJUSTMENT OF THE STRIPPER MAY BE REQUIRED WHEN MOVING THE APPLICATOR BETWEEN BENCH AND LEADMAKER APPLICATIONS.
APPLY PART NUMBER 1-23419-5 LOCTITE TO THREADS OF ITEM 62 & 180.
GREASE THREADS, GROOVE AND O-RING ON ITEMS 139 & 152.
MAGNET MUST BE ORIENTED CORRECTLY IN ORDER TO PROPERLY ACTUATE THE COUNTER.
CRIMP HEIGHT REFERENCE SETTING WAS THE SETTING USED WHEN THE APPLICATOR WAS QUALIFIED AT THE FACTORY...
SPARE FEED CAM STORAGE LOCATION REFER TO INSTRUCTION SHEET FOR ADDITIONAL INFORMATION.
TO CONVERT THE APPLICATOR TO A NON-CARRIER CUTTING STYLE...
TERMINAL LUBRICANT IS RECOMMENDED.
WHEN RUNNING ON A BENCH TERMINATING UNIT TO MAINTAIN PROPER WIRE PLACEMENT, SPLIT CYCLE MODE IS RECOMMENDED FOR THE TERMINATING UNIT.

*WARNING
ON INSTALLATION, SET WIRE DISC, ITEM 40 TO LARGEST WIRE SIZE SETTING. USE OF SETTINGS BELOW MINIMUM REQUIRED CRIMP HEIGHT SETTING WILL CAUSE DAMAGE TO CRIMP TOOLING.

Table with columns: PART NO, DESCRIPTION, ITEM NO. Rows include 1803078-4 SPACER, PRECISION; 2119782-1 FINE ADJUST HEAD ASM, PACIFIC STYLE; 2119640-1 PUSH ROD, AIR FEED.

PACIFIC VERSION
Shown on sheets 3 of 4 & 4 of 4
(Atlantic version shown on sheets 1 of 4 & 2 of 4)

SET UP GAUGE 2119599-1. REVISIONS table with columns: P, LTR, DESCRIPTION, DATE, DWN, APVD.

Main parts list table with columns: P, LTR, DESCRIPTION, DATE, DWN, APVD. Includes items like BUSHING, FLANGED; SPRING, COMPRESSION; SHCS, LOW HEAD, RoHS, M5 X 16; MECHANICAL FEED ASSEMBLY; AIR FEED MODULE; TAG, IDENTIFICATION; SPACER, FEEDER; STANDOFF, HOLD-DOWN; PIN, SLOTTED SPRING 3.0 X 20.0; SPRING, COMPRESSION; GUIDE PIN, HOLDDOWN; GUIDE PIN, HOLDDOWN; RING, RETAIN, EXTERN, 3/16 CRESCENT; MAGNET, RARE EARTH HIGH ENERGY; COUNTER, MAGNETIC; SPRING, FEED FINGER; O-RING, .801 ID, .070 DIA. MAT.; FEED CAM, AIR FEED; DETENT PIN; SCR, BHSC, RoHS (M4 X 16); SHCS, LOW HEAD, RoHS, M4 X 20; FEED CAM, POST FEED; APPLICATOR BASIC ASSEMBLY, SF; RAM, STEPPED, ASIAN STYLE, SIDE FEED; BOLT, ADJUSTMENT; PIN, RETAIN, GRVD, 3/16 X .854; HOLDER, FEED FINGER, AF; MEMORY CHIP, PROGRAMMED; SERVO FEED LATCH ASM; WASHER, FLAT, REG M4; FEED FINGER ASSEMBLY, SF; ASSY, LUBRICATOR, SIDE FEED; SPACER, CRIMPER; SPRING, COMPRESSION; HOLDER, INS; DOCUMENTATION PACKAGE; TAG, IDENTIFICATION; SCREW, DRIVE, RH, RoHS, 2 x .188; LIMITER, ADJUSTMENT BOLT; SCR, SET, SOC, CONE PNT, M3 x 4.0; SCR, HEX HD CAP, M4 X 6.0; PIN, SLOTTED SPRING .062 X .250; PAWL, FEED; NUT, HEX, REG, RoHS, M3.5; HOLDDOWN, TERMINAL; SCR, SKT HD CAP M4 X 6.0; FEED CAM, PRE FEED; SCR, BHSC, RoHS (M8 X 40); DISC, NUMBERED FA WIRE ADJUSTMENT; APPLICATOR SHIM PACK; RAM WASHER, PRECISION; SUPPORT, TERMINAL; SCR, BHSC, RoHS (M4 X 20); HEX HEAD, FLANGED, M5 x 8mm LONG; SPACER, STRIP GUIDE; ASSEMBLY, STRIP GUIDE; SPACER, CRIMPER; STRIP GUIDE; SCR, SKT HD CAP, RoHS, M4 X 8.0; WASHER, FLAT, REG M4; STRIPPER, SIDE FEED; SPRING, COMPRESSION; STOP, SHEAR; HOLDER, SHEAR; SHEAR, FLOATING; ANVIL, COMBINATION; DEPRESSOR, SHEAR.

Product information table including DIMENSIONS, TOLERANCES UNLESS OTHERWISE SPECIFIED, MATERIAL, FINISH, WEIGHT, SCALE 1:2, SHEET 3 OF 4, REV G.

LOC		DIST		REVISIONS			
A	66	P	LTN	DESCRIPTION	DATE	DWN	APVD
		-		SEE SHEET 1			

FEED TYPE MECHANICAL



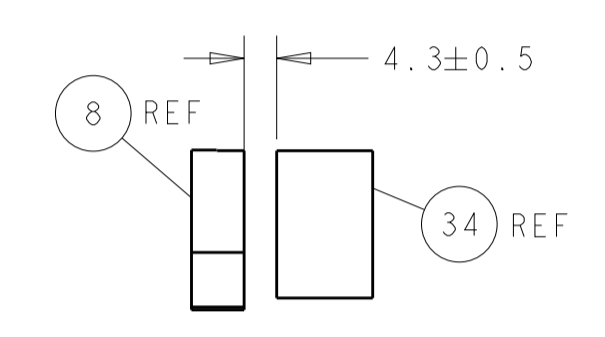
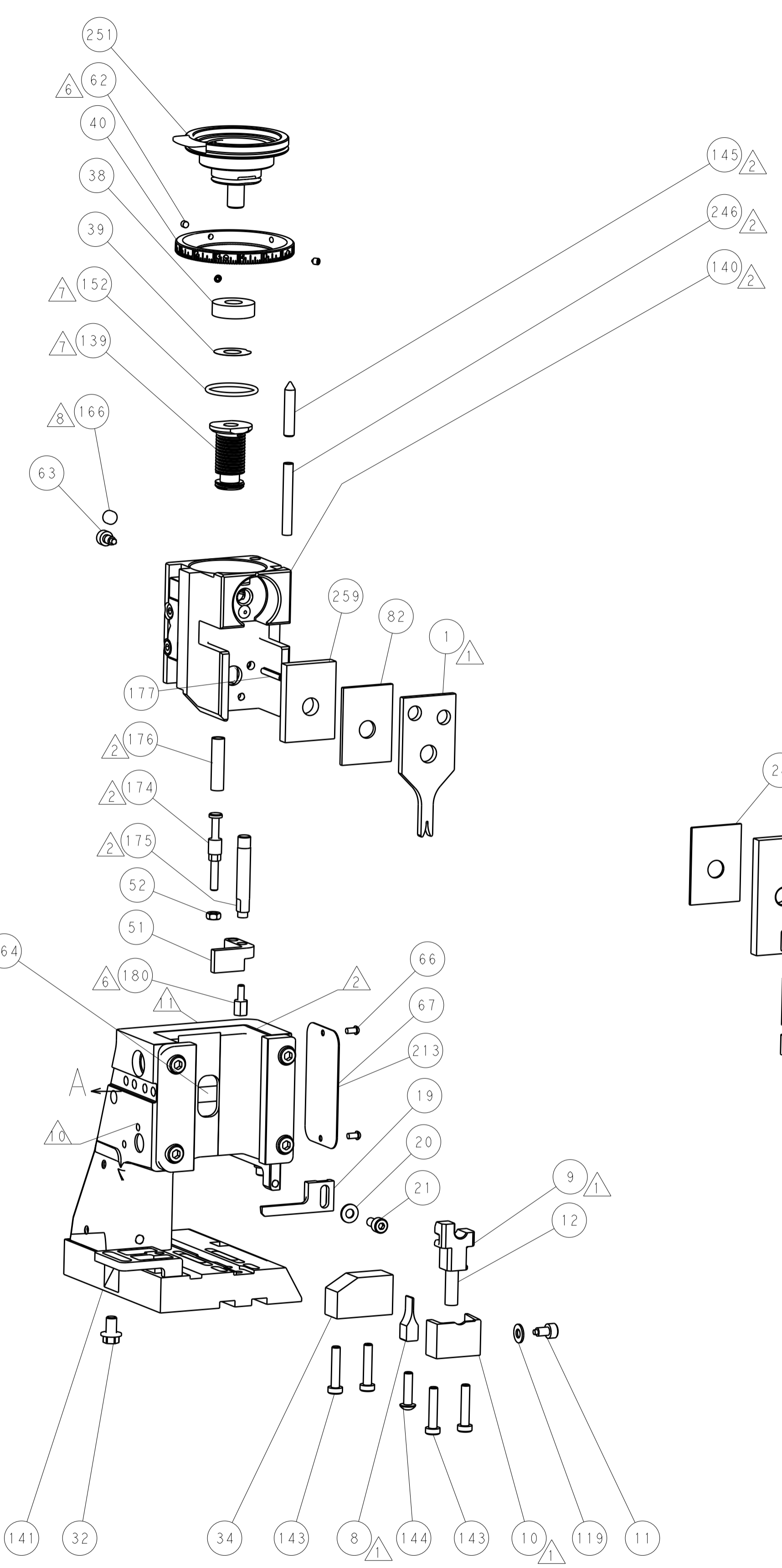
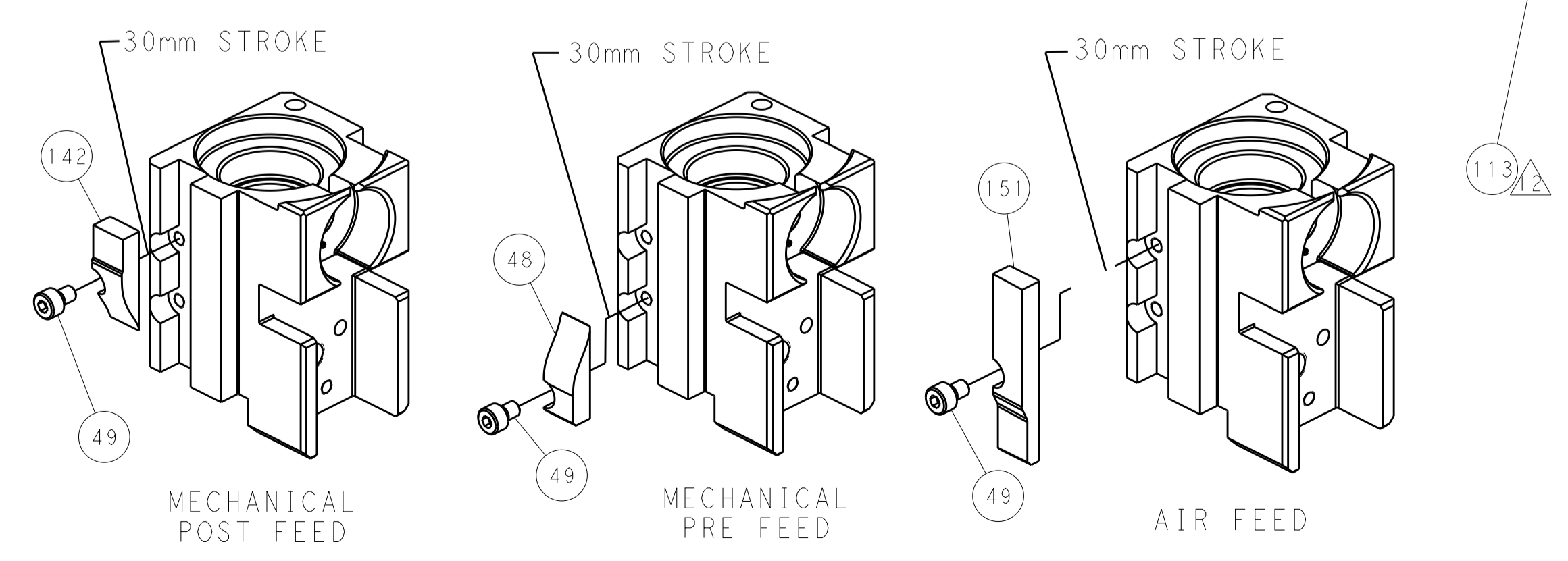
PNEUMATIC



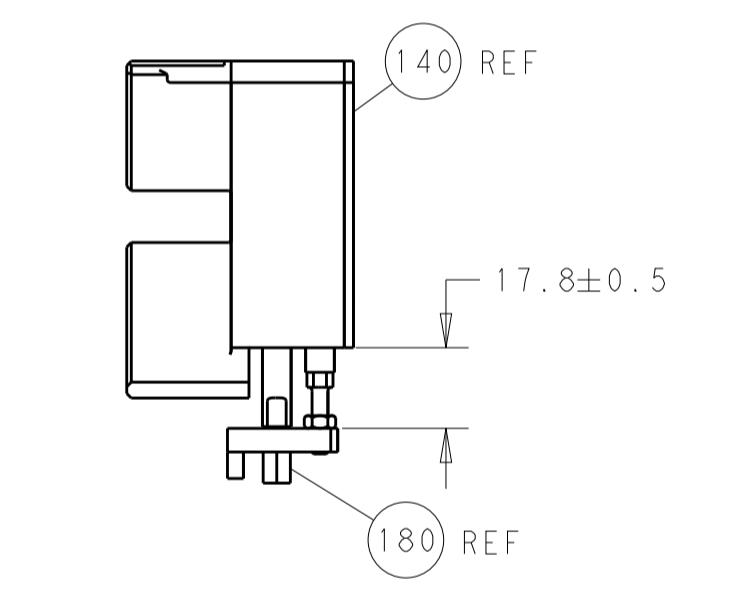
SERVO LATCH PLATE



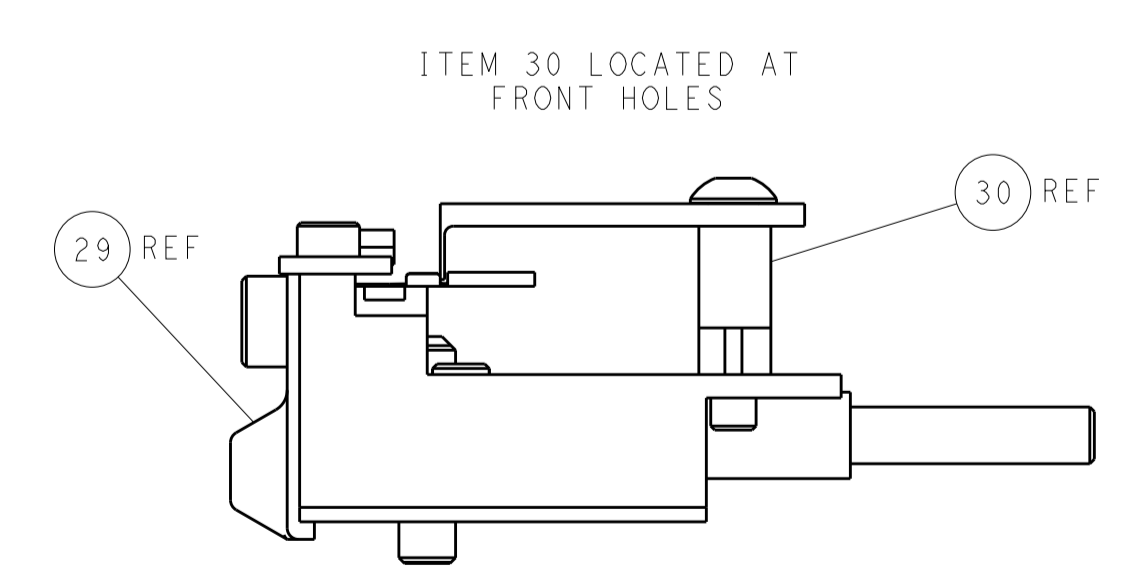
CAM POSITIONS



TERMINAL SUPPORT LOCATION



HOLDDOWN SET-UP



FEED TRACK POSITION
GUIDE BY WIRE BARREL

PACIFIC VERSION
 Shown on sheets 3 of 4 & 4 of 4
 (Atlantic version shown on sheets 1 of 4 & 2 of 4)

DIMENSIONS:		TOLERANCES UNLESS OTHERWISE SPECIFIED:		DRAWN: R. O. WILSON 24OCT2013		TE Connectivity	
mm	0 PLC ±	1 PLC ±	2 PLC ±	3 PLC ±	4 PLC ±	5 PLC ±	Harrisburg, PA 17105-3608
MATERIAL:		FINISH:		CHK: K. J. STAKEM 25OCT2013		NAME: Ocean Side Feed Applicator	
				APVD: T. L. ELFIN 25OCT2013		SIZE: CAGE CODE: DRAWING NO: 00779 ©=2266045	
				WEIGHT:		RESTRICTED TO: Customer Accessible Production Drawing	
				SCALE: 1:2		SHEET 4 OF 4 REV G	

Mouser Electronics

Authorized Distributor

Click to View Pricing, Inventory, Delivery & Lifecycle Information:

[TE Connectivity:](#)

[2266045-2](#)