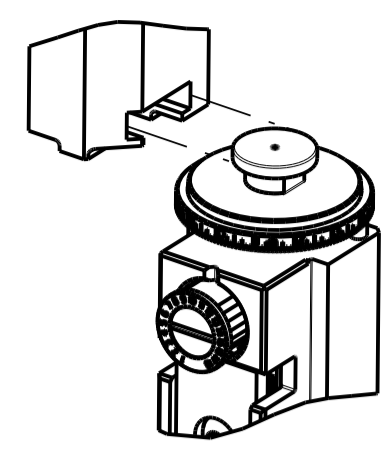


| PART NUMBER | REVISION | DESCRIPTION                            | FEED TYPE  |
|-------------|----------|--|------------|
| 2151836-1   | D        | FINE CRIMP HEIGHT ADJUST               | MECHANICAL |
| 2151836-2   | E        | FINE CRIMP HEIGHT ADJUST               | PNEUMATIC  |
| 5-2151836-1 | D        | SEAL STRIPPER CRIMPER TERMINATING UNIT | MECHANICAL |
| 5-2151836-2 | E        | SEAL STRIPPER CRIMPER TERMINATING UNIT | PNEUMATIC  |
| 7-2151836-1 | D        | MECHANICAL AND CRIMP TOOLING KIT       | MECHANICAL |
| 7-2151836-2 | E        | PNEUMATIC AND CRIMP TOOLING KIT        | PNEUMATIC  |
| 7-2151836-7 | C        | CRIMP TOOLING KIT                      | -          |

ATLANTIC VERSION TERMINATOR INTERFACE ADAPTER



APPLICATOR DATA

| CRIMP | SIZE           | TYPE |
|-------|----------------|------|
| WIRE  | 1.78 mm [.070] | F    |
| INSUL | 2.19 mm [.086] | O    |

APPLICATOR INSTRUCTIONS  
408-35042

TERMINAL DATA: TE TERMINAL TE CRIMP SPECIFICATION

TERMINAL NAME: RECEPTACLE CONTACT, Au, SEALED TYPE, 1.0 SERIES

| WIRE STRIP LENGTH           | INSULATION DIAMETER RANGE    |
|-----------------------------|------------------------------|
| 4.80-5.30 mm [.189-.209 IN] | Ø1.80-2.20 mm [.071-.087 IN] |

TERMINAL APPLICATION SPECIFICATION 114-5400

TERMINALS APPLIED 5

| TE TERMINAL | TE TERMINAL | TE TERMINAL | TE TERMINAL |
|-------------|-------------|-------------|-------------|
| 1939351-1   |             |             |             |

TERMINAL DATA: TE TERMINAL TE CRIMP SPECIFICATION

TERMINAL NAME: RECEPTACLE CONTACT, Sn, SEALED TYPE, 1.0 SERIES

| WIRE STRIP LENGTH           | INSULATION DIAMETER RANGE    |
|-----------------------------|------------------------------|
| 4.80-5.30 mm [.189-.209 IN] | Ø1.80-2.20 mm [.071-.087 IN] |

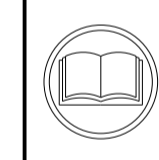
TERMINAL APPLICATION SPECIFICATION 6

TERMINALS APPLIED 5, 6

| TE TERMINAL | TE TERMINAL | TE TERMINAL | TE TERMINAL |
|-------------|-------------|-------------|-------------|
| 1939351-1   |             |             |             |

| WIRE SIZE | CRIMP HEIGHT mm [INCH]     | CRIMP HEIGHT REFERENCE SETTING |
|-----------|----------------------------|--------------------------------|
| 1.25mm2   | 1.20+/-0.05 [.047+/- .002] | 7.7                            |
| 0.85mm2   | 1.12+/-0.05 [.044+/- .002] | 8.5                            |
| 0.75mm2   | 1.09+/-0.05 [.043+/- .002] | 8.7                            |

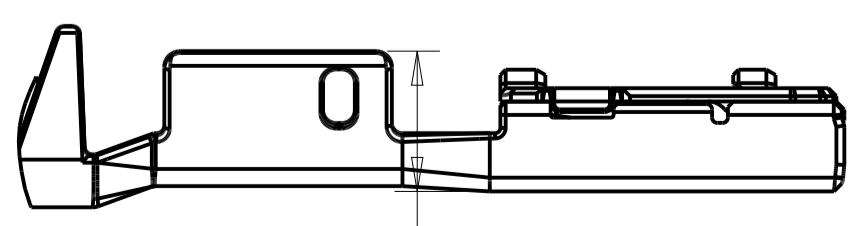
| WIRE SIZE | CRIMP HEIGHT mm [INCH]     | CRIMP HEIGHT REFERENCE SETTING |
|-----------|----------------------------|--------------------------------|
| 1.00mm2   | 1.16+/-0.05 [.046+/- .002] | 8.1                            |



- 1 RECOMMENDED SPARE PARTS
- 2 REFER TO SUPPLIED INSTRUCTION SHEET FOR CLEANING, LUBRICATION AND STORAGE OF APPLICATOR.
- 3 APPLY PART NUMBER 1-23419-5 LOCTITE TO THREADS OF ITEMS 180. APPLY PART NUMBER 2-23419-6 LOCTITE TO THREADS OF ITEM 242.
- 4 CRIMP HEIGHT REFERENCE SETTING WAS THE SETTING USED WHEN THE APPLICATOR WAS QUALIFIED AT THE FACTORY. ADJUSTMENT MAY BE NECESSARY WHEN RUNNING APPLICATOR IN THE FIELD.
- 5 TERMINAL LUBRICANT IS RECOMMENDED.
- 6 THIS CRIMP PARAMETER IS PROVIDED TO MEET A CUSTOM AND UNIQUE CUSTOMER REQUIREMENT. IT HAS BEEN EVALUATED AND IS CONDITIONALLY SPECIFIED BY TE CONNECTIVITY. THIS CUSTOMIZED CRIMP PARAMETER IS NOT LISTED AS AN APPROVED APPLICATION WITHIN A TE CONNECTIVITY APPLICATION SPECIFICATION; HOWEVER, IT HAS BEEN VALIDATED ACCORDING TO TE CONNECTIVITY SPECIFICATIONS 109-18079 (TEST GROUP 1) AND 114-18022. **TE CONNECTIVITY EXPRESSLY DISCLAIMS ANY AND ALL WARRANTIES THAT THE PRODUCT WILL PERFORM SIMILARLY TO VALIDATED AND APPROVED APPLICATIONS, AS STATED WITHIN TE CONNECTIVITY APPLICATION SPECIFICATIONS, INCLUDING BUT NOT LIMITED TO IMPLIED WARRANTIES OF MERCHANTABILITY OR FITNESS FOR PARTICULAR PURPOSE.** AS SUCH, IT IS HIGHLY RECOMMENDED THAT THE CUSTOMER PERFORM FURTHER DETAILED EVALUATION TO ASSESS PRODUCT PERFORMANCE IN THE SPECIFIC APPLICATION.

**\*WARNING**  
 ON INSTALLATION, SET WIRE DISC TO CRIMP HEIGHT REFERENCE SETTING FOR LARGEST WIRE SIZE. CRIMP HEIGHT REFERENCE SETTINGS GREATER THAN THE VALUE SHOWN MAY CAUSE DAMAGE TO THE CRIMP TOOLING. REFER TO THE INSTRUCTION SHEET FOR PROPER SETUP AND ADJUSTMENTS.

7. UNLESS SPECIFIED OTHERWISE TORQUE VALUES SHALL BE USED PER DOCUMENT, 101-35000.



BARREL FRONT POINT HEIGHT  
1.45

BARREL FRONT POINT HEIGHT  
(FRONT BOTTOM SURFACE BOX TO FRONT BARREL END)

ATLANTIC VERSION  
 Shown on sheets 1 of 4 & 2 of 4  
 (Pacific version shown on sheets 3 of 4 & 4 of 4)

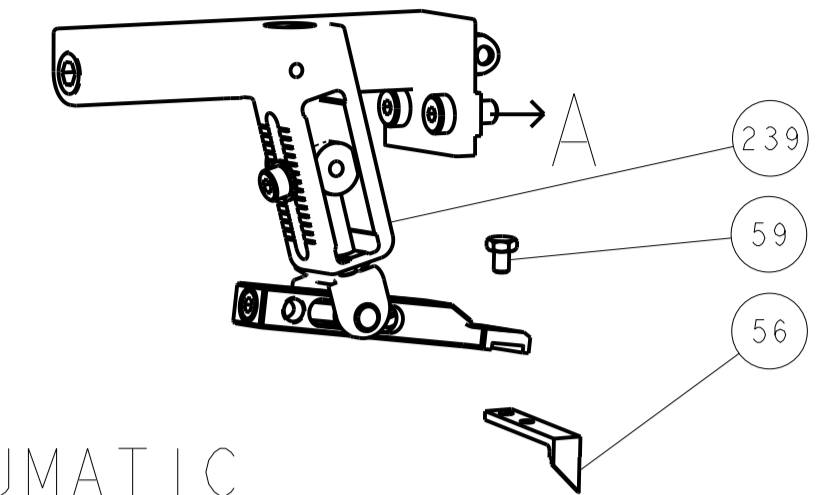
| LOC | DIST | REV | LTN | DESCRIPTION   | DATE      | OWN | APPV |
|-----|------|-----|-----|---------------|-----------|-----|------|
| A   | 66   | B   |     | ECR-16-018294 | 28DEC2016 | TB  | GB   |
|     |      | C   |     | ECR-17-017477 | 29NOV2017 | KH  | CT   |
|     |      | D   |     | ECR-19-005831 | 11APR2019 | JAH | TE   |
|     |      | E   |     | ECR-19-011881 | 29JUL2019 | FJ  | TE   |

|   |     |     |     |     |     |     |             |                                     |     |
|---|-----|-----|-----|-----|-----|-----|-------------|-------------------------------------|-----|
| - | -   | -   | 1   | 1   | -   | -   | 1803515-3   | RAM ASSEMBLY, SF ATLANTIC           | 293 |
| - | -   | -   | 1   | 1   | -   | -   | 2-1803583-1 | APPLICATOR BASIC ASSEMBLY, SF       | 292 |
| - | 1   | -   | 1   | -   | 1   | -   | 2119641-1   | FEED CAM, AIR FEED                  | 248 |
| - | 1   | 1   | 1   | 1   | 1   | 1   | 2119082-5   | CAM, SNAIL, INSULATION ADJUSTMENT   | 244 |
| - | 1   | 1   | 1   | 1   | 1   | 1   | 2079764-1   | WASHER, WAVE SPRING, CREST-TO-CREST | 243 |
| - | 1   | 1   | 1   | 1   | 1   | 1   | 2119083-1   | RETAINER, INSULATION DIAL           | 242 |
| - | 1   | 1   | 1   | 1   | 1   | 1   | 7-18023-7   | SCR, SKT HD CAP M3 X 4.0            | 241 |
| - | -   | 1   | -   | 1   | -   | 1   | 2119580-1   | MECHANICAL FEED ASSEMBLY            | 239 |
| - | 1   | -   | 1   | -   | 1   | -   | 2844940-1   | AIR FEED MODULE                     | 238 |
| - | -   | -   | 1   | 1   | -   | -   | 4-1722335-3 | STRIPPER, SIDE FEED                 | 182 |
| - | -   | -   | 1   | 1   | -   | -   | 1-5018030-0 | NUT, HEX, REG, RoHS, M3.5           | 181 |
| - | -   | -   | 1   | 1   | -   | -   | 1-1752354-5 | STANDOFF, HOLD-DOWN                 | 180 |
| - | -   | -   | 1   | 1   | -   | -   | 993111-1    | PIN, SLOTTED SPRING 3.0 X 20.0      | 177 |
| - | -   | -   | 1   | 1   | -   | -   | 5-22280-0   | SPRING, COMPRESSION                 | 176 |
| - | -   | -   | 1   | 1   | -   | -   | 1752353-3   | GUIDE PIN, HOLDDOWN                 | 175 |
| - | -   | -   | 1   | 1   | -   | -   | 1901680-2   | GUIDE PIN, HOLDDOWN                 | 174 |
| - | REF | REF | REF | REF | REF | REF | 994970-2    | COUNTER, MAGNETIC                   | 164 |
| - | 1   | 1   | 1   | 1   | 1   | 1   | 2119955-1   | ASSY, LUBRICATOR, SIDE FEED         | 113 |
| - | 1   | 1   | 1   | 1   | 1   | 1   | 2844908-1   | SCREW, LOCKING                      | 99  |
| - | 1   | 1   | 1   | 1   | 1   | 1   | 2844907-1   | POST, LOCKING                       | 98  |
| - | 1   | 1   | 1   | 1   | 1   | 1   | 455888-4    | SPACER, CRIMPER                     | 82  |
| - | 1   | 1   | 1   | 1   | 1   | 1   | 1803607-3   | DOCUMENTATION PACKAGE               | 71  |
| - | 1   | 1   | 1   | 1   | 1   | 1   | 2119791-5   | DEPRESSOR, WIRE                     | 70  |
| - | 1   | 1   | 1   | 1   | 1   | 1   | 2119740-1   | TAG, IDENTIFICATION                 | 67  |
| - | 2   | 2   | 2   | 2   | 2   | 2   | 2168078-1   | SCREW, DRIVE, RH, RoHS, 2 x .188    | 66  |
| - | 1   | 1   | 1   | 1   | 1   | 1   | 2168083-2   | SCR, SKT HD CAP, RoHS, M4 X 8.0     | 60  |
| - | 1   | 1   | 1   | 1   | 1   | 1   | 5-18022-5   | SCR, HEX HD CAP, M4 X 6.0           | 59  |
| - | 1   | 1   | 1   | 1   | 1   | 1   | 1338685-1   | PAWL, FEED                          | 56  |
| - | 4   | 4   | 4   | 4   | 4   | 4   | 2168083-3   | SCR, SKT HD CAP, RoHS, M4 X 12.0    | 54  |
| - | 2   | 2   | 2   | 2   | 2   | 2   | 2-2168083-5 | SCR, SKT HD CAP, RoHS, M4 X 14      | 53  |
| - | 1   | 1   | 1   | 1   | 1   | 1   | 5018030-1   | NUT, HEX, REG, RoHS, M3             | 52  |
| - | 1   | 1   | 1   | 1   | 1   | 1   | 811242-5    | BUMPER, HOLD DOWN                   | 51  |
| - | 1   | 1   | 1   | 1   | 1   | 1   | 690753-2    | SPACER, TONKER                      | 50  |
| - | 1   | 2   | 1   | 2   | 1   | 2   | 18023-9     | SCR, SKT HD CAP M4 X 6.0            | 49  |
| - | -   | 1   | -   | 1   | -   | 1   | 2119652-1   | FEED CAM, PRE FEED                  | 48  |
| - | -   | 1   | -   | 1   | -   | 1   | 2119653-1   | FEED CAM, POST FEED                 | 47  |
| - | 1   | 1   | -   | -   | 1   | 1   | 1803583-9   | APPLICATOR BASIC ASSEMBLY, SF       | 46  |
| - | 1   | 1   | -   | -   | 1   | 1   | 1803515-1   | RAM ASSEMBLY, SF ATLANTIC           | 44  |
| - | 1   | 1   | 1   | 1   | 1   | 1   | 1803602-1   | SCR, BHSC, RoHS (M8 X 25)           | 41  |
| - | 1   | 1   | 1   | 1   | 1   | 1   | 1752356-3   | SUPPORT, TERMINAL                   | 34  |
| - | 2   | 2   | 2   | 2   | 2   | 2   | 2079383-5   | SCR, BHSC, RoHS (M4 X 20)           | 33  |
| - | 2   | 2   | 2   | 2   | 2   | 2   | 2-2844962-6 | SPACER, CYLINDRICAL, STRIP GUIDE    | 30  |
| - | 1   | 1   | 1   | 1   | 1   | 1   | 2844992-1   | ASSEMBLY, STRIP GUIDE               | 29  |
| - | 1   | 1   | 1   | 1   | 1   | 1   | 455888-4    | SPACER, CRIMPER                     | 28  |
| - | 1   | 1   | 1   | 1   | 1   | 1   | 1320928-2   | STRIP GUIDE                         | 24  |
| - | 1   | 1   | -   | -   | 1   | 1   | 2168083-2   | SCR, SKT HD CAP, RoHS, M4 X 8.0     | 21  |
| - | 2   | 2   | 1   | 1   | 2   | 2   | 1-18028-2   | WASHER, FLAT, REG M4                | 20  |
| - | 1   | 1   | -   | -   | 1   | 1   | 2119533-1   | STRIPPER, SIDE FEED                 | 19  |
| - | 1   | 1   | 1   | 1   | 1   | 1   | 2119806-1   | INSERT, SHEAR                       | 13  |
| - | 1   | 1   | 1   | 1   | 1   | 1   | 3-22280-3   | SPRING, COMPRESSION                 | 12  |
| - | 1   | 1   | 1   | 1   | 1   | 1   | 1-356885-4  | STOP, SHEAR                         | 11  |
| - | 1   | 1   | 1   | 1   | 1   | 1   | 2119805-1   | SHEAR HOLDER, FRONT                 | 10  |
| - | 1   | 1   | 1   | 1   | 1   | 1   | 1803095-6   | FLOATING SHEAR, FRONT               | 9   |
| - | 1   | 2   | 2   | 1   | 1   | 1   | 4-1633130-8 | ANVIL, COMBINATION .070             | 8   |
| - | 1   | 1   | 1   | 1   | 1   | 1   | 4-240641-0  | SPACER                              | 7   |
| - | -   | -   | -   | -   | -   | -   | -           | -                                   | 6   |
| - | 1   | 1   | 1   | 1   | 1   | 1   | 2119757-8   | DEPRESSOR, SHEAR                    | 5   |
| - | 1   | 1   | 1   | 1   | 1   | 1   | 4-238011-0  | BLOCK, CRIMPER SPACER               | 4   |
| - | 1   | 2   | 2   | 1   | 1   | 1   | 2-1803018-5 | CRIMPER, INSULATION O               | 3   |
| - | 1   | 1   | 1   | 1   | 1   | 1   | 455888-4    | SPACER, CRIMPER                     | 2   |
| - | 1   | 2   | 2   | 1   | 1   | 1   | 5-1752057-9 | CRIMPER, WIRE PREMIUM, STEPPED      | 1   |

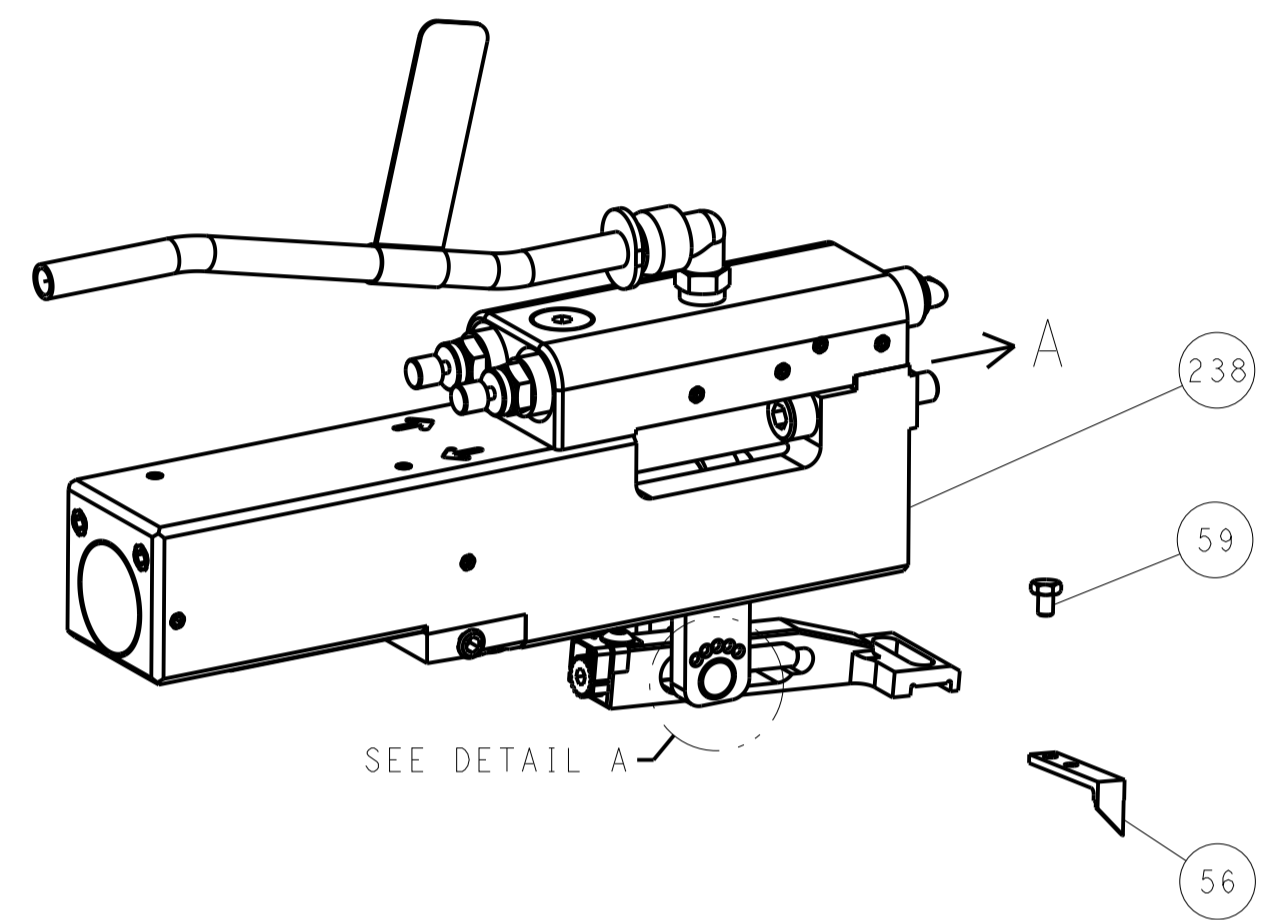
| DIMENSIONS: | TOLERANCES UNLESS OTHERWISE SPECIFIED:                          | OWN             | CHK      | DATE      | NAME     | PRODUCT SPEC | APPLICATION SPEC | SIZE | CAGE CODE | DRAWING NO | RESTRICTED TO                          |
|-------------|---|-----------------|----------|-----------|----------|--------------|------------------|------|-----------|------------|--|
| mm          | 0 PLC ±<br>1 PLC ±<br>2 PLC ±<br>3 PLC ±<br>4 PLC ±<br>ANGLES ± | TE Connectivity | L. ZHANG | 20NOV2012 | L. ZHANG | 20NOV2012    | 20NOV2012        | A1   | 00779     | 2151836    | Customer Accessible Production Drawing |

| LOC |    | DIST |     | REVISIONS   |      |     |      |
|-----|----|------|-----|-------------|------|-----|------|
| A   | 66 | P    | LTM | DESCRIPTION | DATE | DWN | APVD |
|     |    | -    | -   | SEE SHEET 1 | -    | -   | -    |

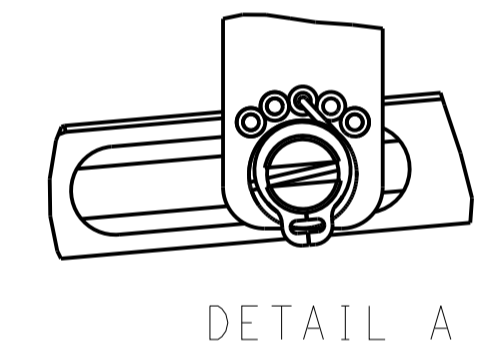
# FEED TYPE MECHANICAL



## PNEUMATIC

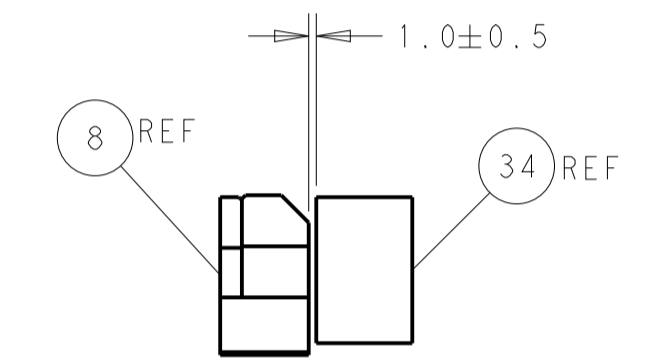
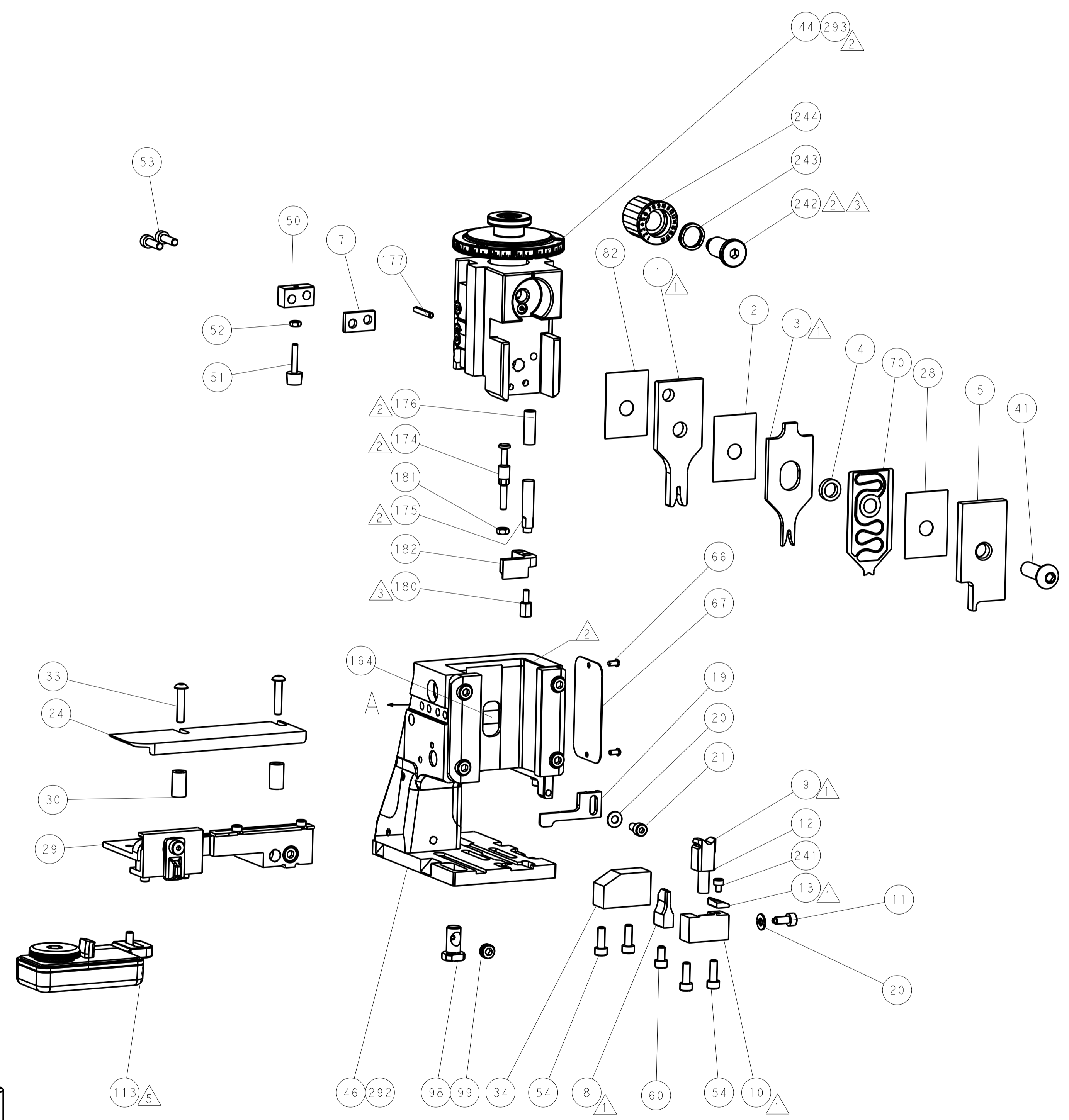
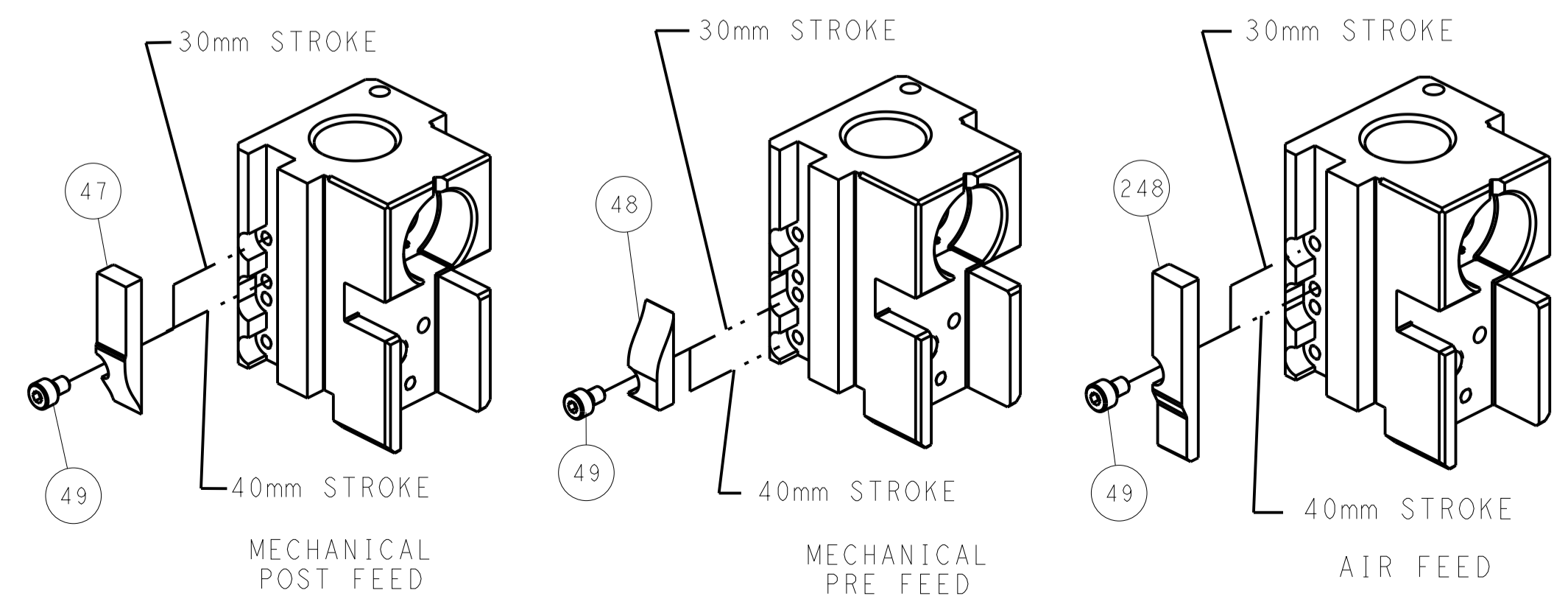


## FEED SPRING SETTING POSITION (SHOWN FROM REAR SIDE)

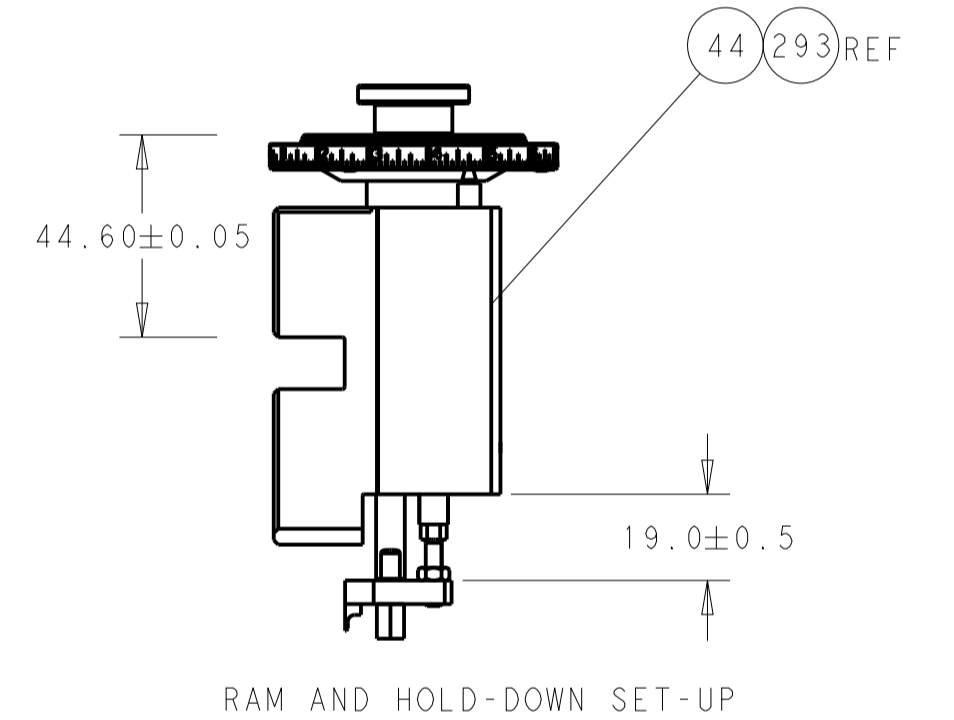


DETAIL A

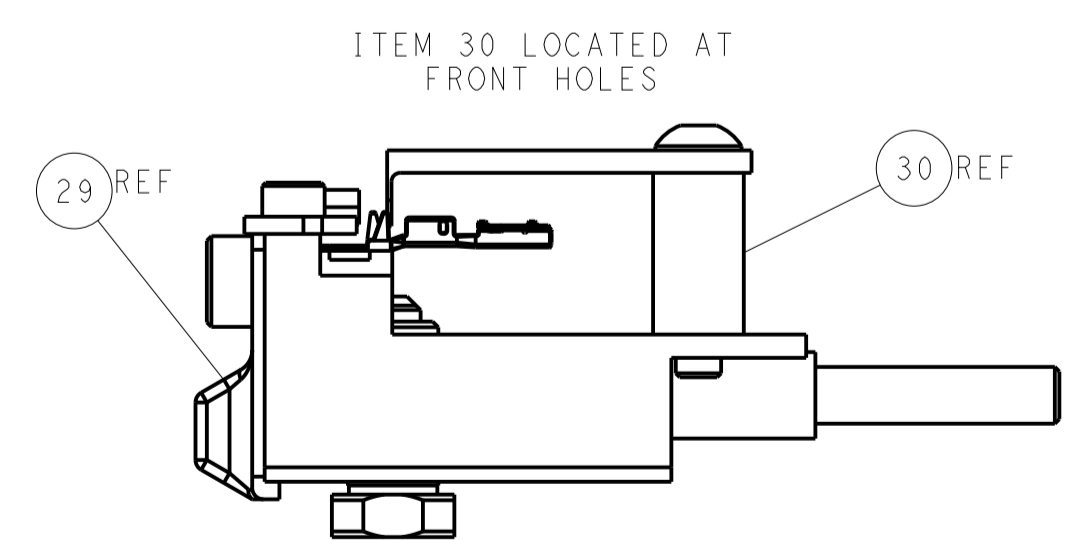
## CAM POSITIONS



TERMINAL SUPPORT LOCATION



RAM AND HOLD-DOWN SET-UP



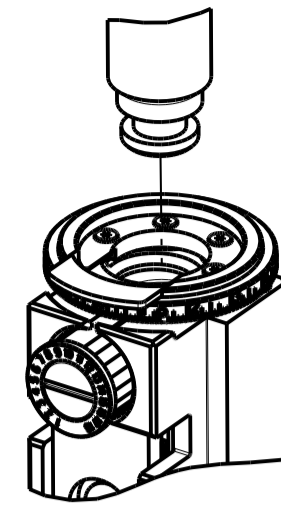
FEED TRACK POSITION GUIDE BY INSULATION BARREL

**ATLANTIC VERSION**  
 Shown on sheets 1 of 4 & 2 of 4  
 (Pacific version shown on sheets 3 of 4 & 4 of 4)

|             |        |  |  |  |                                  |                 |   |
|-------------|--------|--|--|--|----------------------------------|-----------------|---|
| DIMENSIONS: |        | TOLERANCES UNLESS OTHERWISE SPECIFIED: |  | DWN: ZHANG 20NOV2012                   |                                  | TE Connectivity |   |
| mm          | 0 PLC  | ±                                      |  | CHK: ZHANG 20NOV2012                   | NAME: Ocean Side Feed Applicator |                 | TE Connectivity Harrisburg, PA 17105-3608 |
|             | 1 PLC  | ±                                      |  | APVD: S. XI 20NOV2012                  | RESTRICTED TO                    |                 |   |
|             | 2 PLC  | ±                                      |  | PRODUCT SPEC                           | SCALE: 1:2                       |                 |   |
|             | 3 PLC  | ±                                      |  | APPLICATION SPEC                       | SHEET 2 OF 4                     |                 |   |
|             | 4 PLC  | ±                                      |  | WEIGHT                                 | REV E                            |                 |   |
|             | ANGLES | ±                                      |  | MATERIAL                               | CAGE CODE: A1100779              |                 |   |
|             |        |  |  | FINISH                                 | DRAWING NO: 2151836              |                 |   |
|             |        |  |  | Customer Accessible Production Drawing |                                  |                 |   |

| PART NUMBER | REVISION | DESCRIPTION              | FEED TYPE  |
|-------------|----------|--------------------------|------------|
| 2-2151836-1 | D        | FINE CRIMP HEIGHT ADJUST | MECHANICAL |
| 2-2151836-2 | E        | FINE CRIMP HEIGHT ADJUST | PNEUMATIC  |
| 7-2151836-7 | C        | CRIMP TOOLING KIT        | -          |

PACIFIC VERSION TERMINATOR  
INTERFACE ADAPTER



| APPLICATOR DATA |                |      |
|-----------------|----------------|------|
| CRIMP           | SIZE           | TYPE |
| WIRE            | 1.78 mm [.070] | F    |
| INSUL           | 2.19 mm [.086] | O    |

APPLICATOR INSTRUCTIONS  
408-35042

| TERMINAL DATA: TE TERMINAL                                     |             | TE CRIMP SPECIFICATION       |             |
|--|-------------|------------------------------|-------------|
| TERMINAL NAME: RECEPTACLE CONTACT, Au, SEALED TYPE, 1.0 SERIES |             |                              |             |
| WIRE STRIP LENGTH  |             | INSULATION DIAMETER RANGE    |             |
| 4.80-5.30 mm [1.89-.209 IN]                                    |             | Ø1.80-2.20 mm [.071-.087 IN] |             |
| TERMINAL APPLICATION SPECIFICATION                             | 114-5400    | -                            | -           |
| TERMINALS APPLIED $\Delta$                                     |             |                              |             |
| TE TERMINAL  | TE TERMINAL | TE TERMINAL                  | TE TERMINAL |
| 1939351-1  | -           | -                            | -           |

| TERMINAL DATA: TE TERMINAL                                     |             | TE CRIMP SPECIFICATION       |             |
|--|-------------|------------------------------|-------------|
| TERMINAL NAME: RECEPTACLE CONTACT, Sn, SEALED TYPE, 1.0 SERIES |             |                              |             |
| WIRE STRIP LENGTH  |             | INSULATION DIAMETER RANGE    |             |
| 4.80-5.30 mm [1.89-.209 IN]                                    |             | Ø1.80-2.20 mm [.071-.087 IN] |             |
| TERMINAL APPLICATION SPECIFICATION                             | $\Delta$    | -                            | -           |
| TERMINALS APPLIED $\Delta$                                     |             |                              |             |
| TE TERMINAL  | TE TERMINAL | TE TERMINAL                  | TE TERMINAL |
| 1939351-1  | -           | -                            | -           |

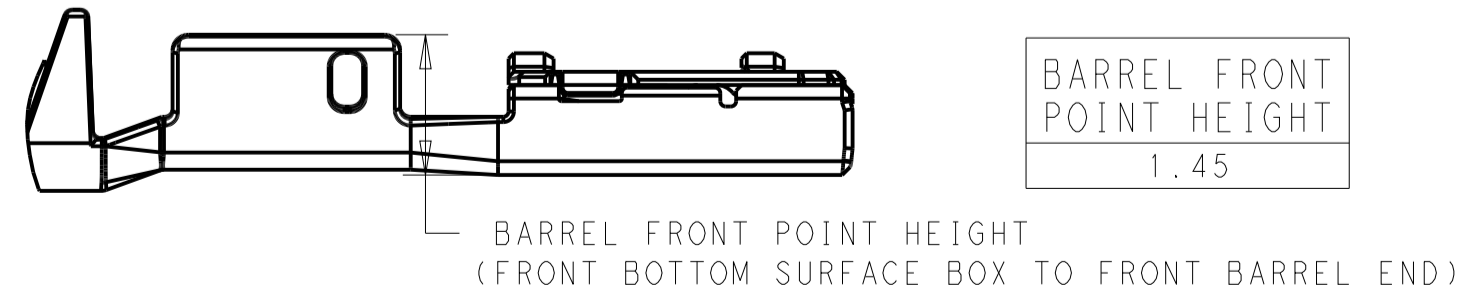
| WIRE SIZE | CRIMP HEIGHT mm [INCH]         | CRIMP HEIGHT REFERENCE SETTING $\Delta$ |
|-----------|--------------------------------|---|
| 1.25mm2   | 1.20 +/- 0.05 [1.047 +/- .002] | 7.7                                     |
| 0.85mm2   | 1.12 +/- 0.05 [1.044 +/- .002] | 8.5                                     |
| 0.75mm2   | 1.09 +/- 0.05 [1.043 +/- .002] | 8.7                                     |

| WIRE SIZE | CRIMP HEIGHT mm [INCH]         | CRIMP HEIGHT REFERENCE SETTING $\Delta$ |
|-----------|--------------------------------|---|
| 1.00mm2   | 1.16 +/- 0.05 [1.046 +/- .002] | 8.1                                     |

- $\Delta$  1 RECOMMENDED SPARE PARTS
- $\Delta$  2 REFER TO SUPPLIED INSTRUCTION SHEET FOR CLEANING, LUBRICATION AND STORAGE OF APPLICATOR.
- $\Delta$  3 APPLY PART NUMBER 1-23419-5 LOCTITE TO THREADS OF ITEMS 180. APPLY PART NUMBER 2-23419-6 LOCTITE TO THREADS OF ITEM 242.
- $\Delta$  4 CRIMP HEIGHT REFERENCE SETTING WAS THE SETTING USED WHEN THE APPLICATOR WAS QUALIFIED AT THE FACTORY. ADJUSTMENT MAY BE NECESSARY WHEN RUNNING APPLICATOR IN THE FIELD.
- $\Delta$  5 TERMINAL LUBRICANT IS RECOMMENDED.
- $\Delta$  6 THIS CRIMP PARAMETER IS PROVIDED TO MEET A CUSTOM AND UNIQUE CUSTOMER REQUIREMENT. IT HAS BEEN EVALUATED AND IS CONDITIONALLY SPECIFIED BY TE CONNECTIVITY. THIS CUSTOMIZED CRIMP PARAMETER IS NOT LISTED AS AN APPROVED APPLICATION WITHIN A TE CONNECTIVITY APPLICATION SPECIFICATION; HOWEVER, IT HAS BEEN VALIDATED ACCORDING TO TE CONNECTIVITY SPECIFICATIONS 109-18079 (TEST GROUP 1) AND 114-18022. **TE CONNECTIVITY EXPRESSLY DISCLAIMS ANY AND ALL WARRANTIES THAT THE PRODUCT WILL PERFORM SIMILARLY TO VALIDATED AND APPROVED APPLICATIONS, AS STATED WITHIN TE CONNECTIVITY APPLICATION SPECIFICATIONS, INCLUDING BUT NOT LIMITED TO IMPLIED WARRANTIES OF MERCHANTABILITY OR FITNESS FOR PARTICULAR PURPOSE.** AS SUCH, IT IS HIGHLY RECOMMENDED THAT THE CUSTOMER PERFORM FURTHER DETAILED EVALUATION TO ASSESS PRODUCT PERFORMANCE IN THE SPECIFIC APPLICATION.

**\*WARNING**  
ON INSTALLATION, SET WIRE DISC TO CRIMP HEIGHT REFERENCE SETTING FOR LARGEST WIRE SIZE. CRIMP HEIGHT REFERENCE SETTINGS GREATER THAN THE VALUE SHOWN MAY CAUSE DAMAGE TO THE CRIMP TOOLING. REFER TO THE INSTRUCTION SHEET FOR PROPER SETUP AND ADJUSTMENTS.

7. UNLESS SPECIFIED OTHERWISE TORQUE VALUES SHALL BE USED PER DOCUMENT, 101-35000.



| LOC | DIST | REV | DATE | BY | APPV |
|-----|------|-----|------|----|------|
| A   | 66   |     |      |    |      |

| REV      | DATE | BY  | APPV | DESCRIPTION                                   | ITEM NO |
|----------|------|-----|------|---|---------|
| -        | 1    | 1   |      | 2119082-5 CAM, SNAIL, INSULATION ADJUSTMENT   | 244     |
| -        | 1    | 1   |      | 2079764-1 WASHER, WAVE SPRING, CREST-TO-CREST | 243     |
| -        | 1    | 1   |      | 2119083-1 RETAINER, INSULATION DIAL           | 242     |
| -        | 1    | 1   |      | 7-18023-7 SCR, SKT HD CAP M3 X 4.0            | 241     |
| -        | -    | 1   |      | 2119580-1 MECHANICAL FEED ASSEMBLY            | 239     |
| -        | 1    | -   |      | 2844940-1 AIR FEED MODULE                     | 238     |
| -        | REF  | REF |      | 994970-2 COUNTER, MAGNETIC                    | 164     |
| -        | 1    | -   |      | 2119641-2 FEED CAM, AIR FEED                  | 151     |
| -        | 1    | 1   |      | 2168083-8 SCR, SKT HD CAP, RoHS, M4 X 16      | 144     |
| -        | 4    | 4   |      | 2168083-9 SCR, SKT HD CAP, RoHS, M4 X 20      | 143     |
| -        | -    | 1   |      | 2119653-2 FEED CAM, POST FEED                 | 142     |
| -        | 1    | 1   |      | 1-1803583-0 APPLICATOR BASIC ASSEMBLY, SF     | 141     |
| -        | 1    | 1   |      | 1803516-1 RAM ASSEMBLY, SF PACIFIC            | 140     |
| $\Delta$ | 1    | 1   |      | 2119955-1 ASSY, LUBRICATOR, SIDE FEED         | 113     |
| -        | 1    | 1   |      | 2844908-1 SCREW, LOCKING                      | 99      |
| -        | 1    | 1   |      | 2844907-1 POST, LOCKING                       | 98      |
| -        | 1    | 1   |      | 455888-4 SPACER, CRIMPER                      | 82      |
| -        | 1    | 1   |      | 1803607-3 DOCUMENTATION PACKAGE               | 71      |
| -        | 1    | 1   |      | 2119791-5 DEPRESSOR, WIRE                     | 70      |
| -        | 1    | 1   |      | 2119740-1 TAG IDENTIFICATION                  | 67      |
| -        | 2    | 2   |      | 2168078-1 SCREW, DRIVE, RH, RoHS, 2 x .188    | 66      |
| -        | 1    | 1   |      | 5-18022-5 SCR, HEX HD CAP, M4 X 6.0           | 59      |
| -        | 1    | 1   |      | 1338685-1 PAWL, FEED                          | 56      |
| -        | 2    | 2   |      | 2-2168083-5 SCR, SKT HD CAP, RoHS, M4 X 14    | 53      |
| -        | 1    | 1   |      | 5018030-1 NUT, HEX, REG, RoHS, M3             | 52      |
| -        | 1    | 1   |      | 811242-5 BUMPER, HOLD DOWN                    | 51      |
| -        | 1    | 1   |      | 690753-2 SPACER, TONKER                       | 50      |
| -        | 1    | 2   |      | 18023-9 SCR, SKT HD CAP M4 X 6.0              | 49      |
| -        | -    | 1   |      | 2119652-1 FEED CAM, PRE FEED                  | 48      |
| -        | 1    | 1   |      | 1803602-1 SCR, BHSC, RoHS (M8 X 25)           | 41      |
| -        | 1    | 1   |      | 1752356-3 SUPPORT, TERMINAL                   | 34      |
| -        | 2    | 2   |      | 2079383-5 SCR, BHSC, RoHS (M4 X 20)           | 33      |
| -        | 2    | 2   |      | 2-2844962-6 SPACER, CYLINDRICAL, STRIP GUIDE  | 30      |
| -        | 1    | 1   |      | 2844992-1 ASSEMBLY, STRIP GUIDE               | 29      |
| -        | 1    | 1   |      | 455888-4 SPACER, CRIMPER                      | 28      |
| -        | 1    | 1   |      | 1320928-2 STRIP GUIDE                         | 24      |
| -        | 1    | 1   |      | 2168083-2 SCR, SKT HD CAP, RoHS, M4 X 8.0     | 21      |
| -        | 2    | 2   |      | 1-18028-2 WASHER, FLAT, REG M4                | 20      |
| -        | 1    | 1   |      | 2119533-1 STRIPPER, SIDE FEED                 | 19      |
| $\Delta$ | 1    | 1   |      | 2119806-1 INSERT, SHEAR                       | 13      |
| -        | 1    | 1   |      | 3-22280-3 SPRING, COMPRESSION                 | 12      |
| -        | 1    | 1   |      | 1-356885-4 STOP, SHEAR                        | 11      |
| $\Delta$ | 1    | 1   |      | 2119805-1 SHEAR HOLDER, FRONT                 | 10      |
| $\Delta$ | 1    | 1   |      | 1803095-6 FLOATING SHEAR, FRONT               | 9       |
| $\Delta$ | 1    | 1   |      | 4-1633130-8 ANVIL, COMBINATION .070           | 8       |
| -        | 1    | 1   |      | 4-240641-0 SPACER                             | 7       |
| -        | -    | -   |      | -   | 6       |
| -        | 1    | 1   |      | 2119757-8 DEPRESSOR, SHEAR                    | 5       |
| -        | 1    | 1   |      | 4-238011-0 BLOCK, CRIMPER SPACER              | 4       |
| $\Delta$ | 1    | 1   |      | 2-1803018-5 CRIMPER, INSULATION O             | 3       |
| -        | 1    | 1   |      | 455888-4 SPACER, CRIMPER                      | 2       |
| $\Delta$ | 1    | 1   |      | 5-1752057-9 CRIMPER, WIRE PREMIUM, STEPPED    | 1       |

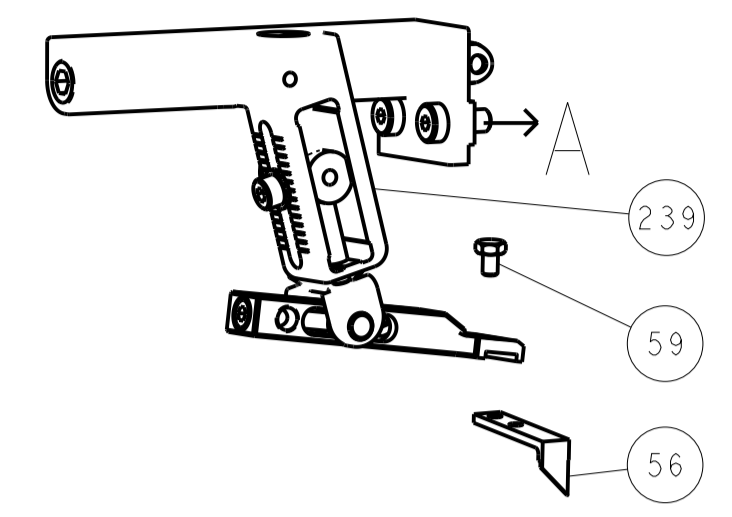
PACIFIC VERSION  
Shown on sheets 3 of 4 & 4 of 4  
(Atlantic version shown on sheets 1 of 4 & 2 of 4)

| DIMENSIONS: |        | TOLERANCES UNLESS OTHERWISE SPECIFIED: |  | MATERIAL: |  | FINISH: |  |
|-------------|--------|--|--|-----------|--|---------|--|
| mm          | 0 PLC  | ±                                      |  |           |  |         |  |
|             | 1 PLC  | ±                                      |  |           |  |         |  |
|             | 2 PLC  | ±                                      |  |           |  |         |  |
|             | 3 PLC  | ±                                      |  |           |  |         |  |
|             | 4 PLC  | ±                                      |  |           |  |         |  |
|             | ANGLES | ±                                      |  |           |  |         |  |

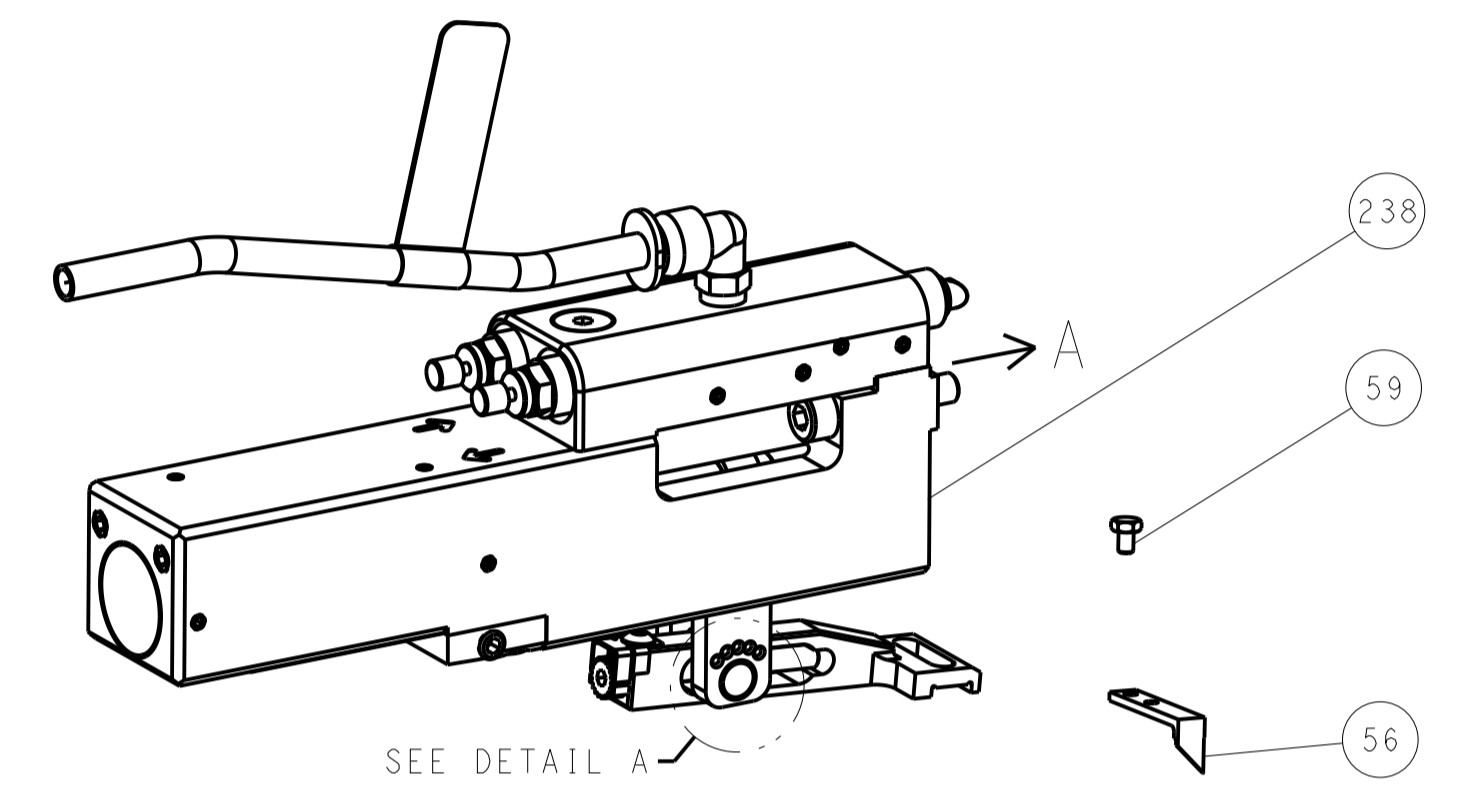
|  |          |              |      |           |
|--|----------|--------------|------|-----------|
| DWG                                    | L. ZHANG | ZONOV2012    | DATE | ZONOV2012 |
| CHK                                    | L. ZHANG | ZONOV2012    | DATE | ZONOV2012 |
| APPV                                   | S. XI    | ZONOV2012    | DATE | ZONOV2012 |
| PRODUCT SPEC                           |          | NAME         |      |           |
| APPLICATION SPEC                       |          | SIZE         |      |           |
| WEIGHT                                 |          | SCALE        |      |           |
| Customer Accessible Production Drawing |          | SHEET 3 OF 4 |      |           |

| LOC |    | DIST |     | REVISIONS   |      |     |      |
|-----|----|------|-----|-------------|------|-----|------|
| A   | 66 | P    | LTM | DESCRIPTION | DATE | DWN | APVD |
|     |    | -    |     | SEE SHEET 1 |      |     |      |

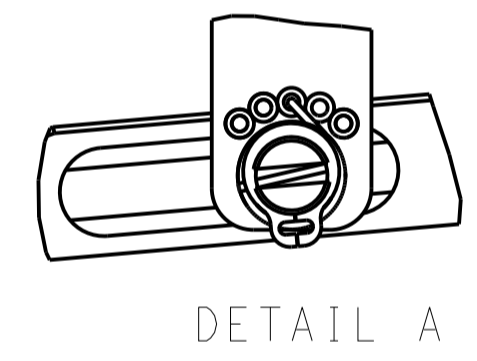
# FEED TYPE MECHANICAL



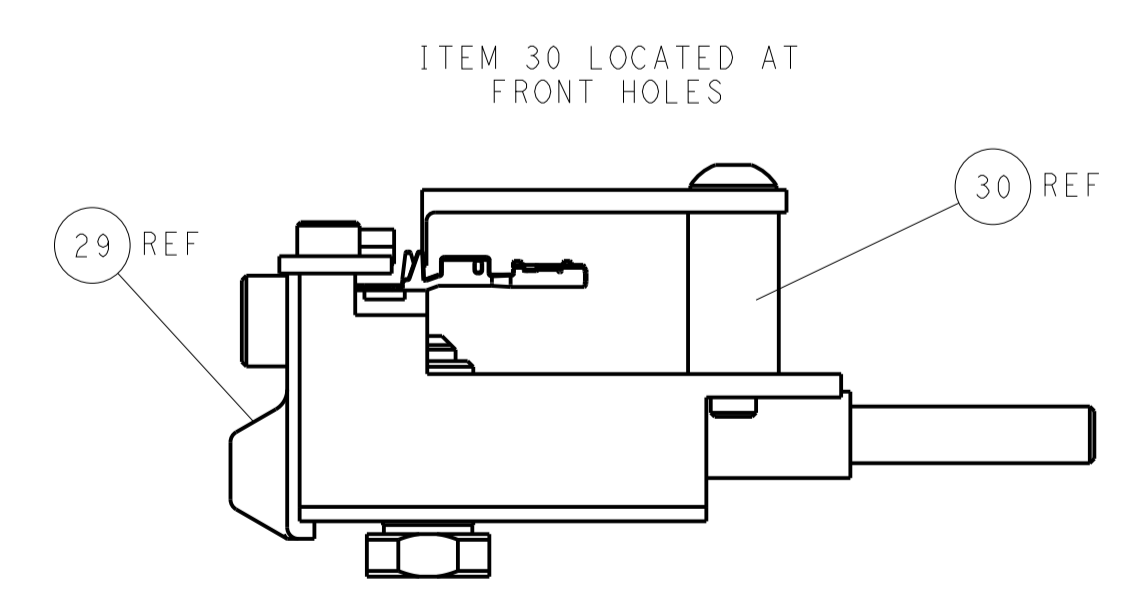
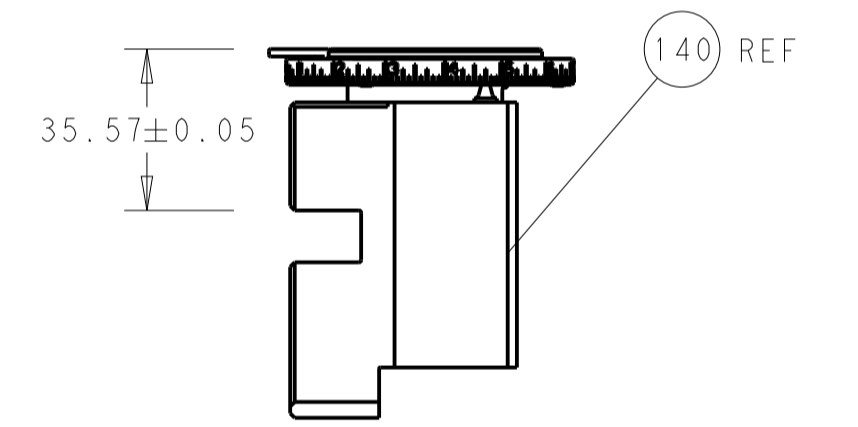
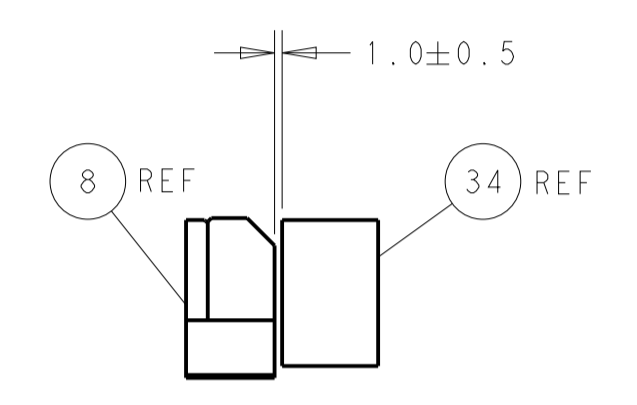
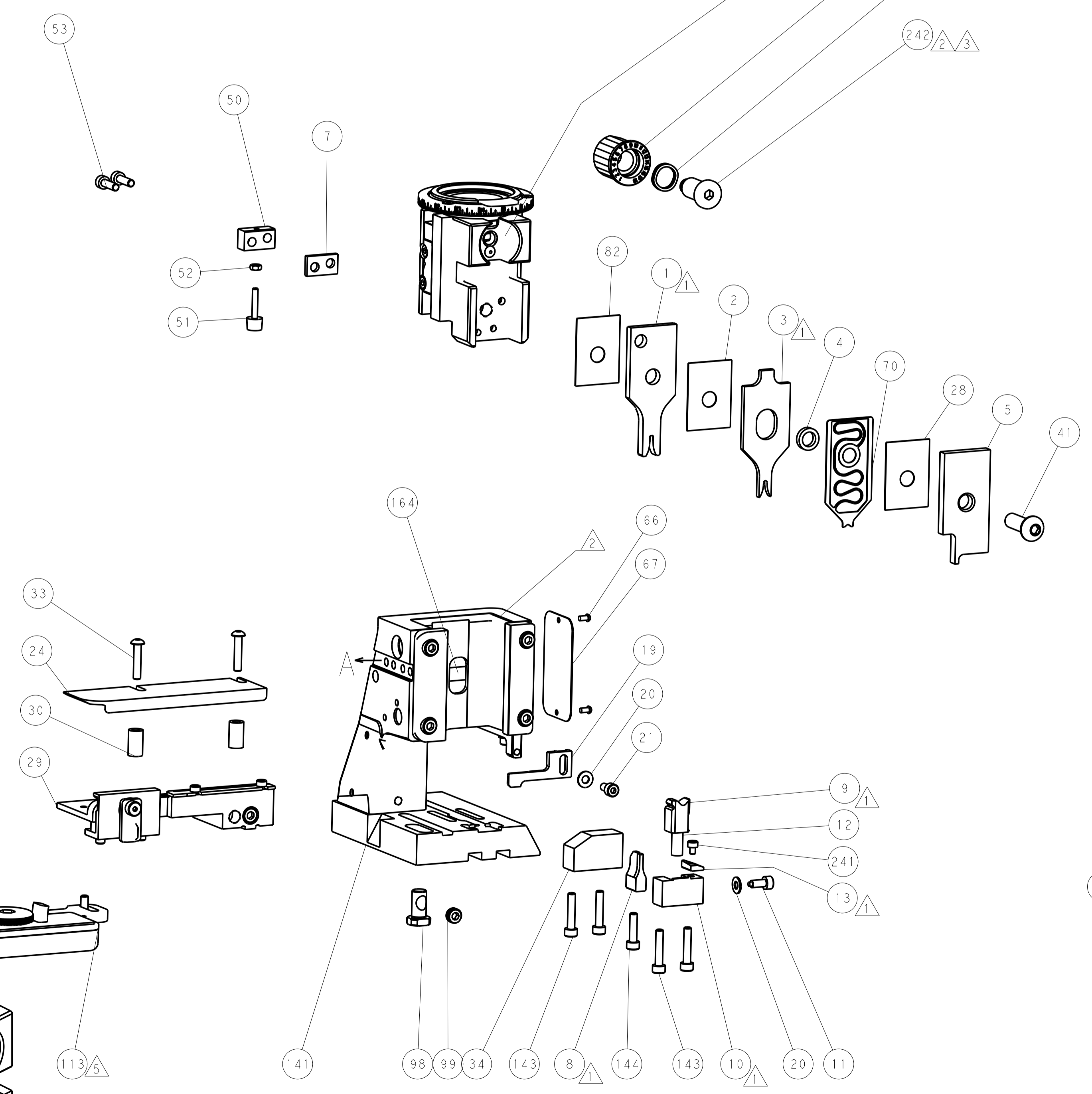
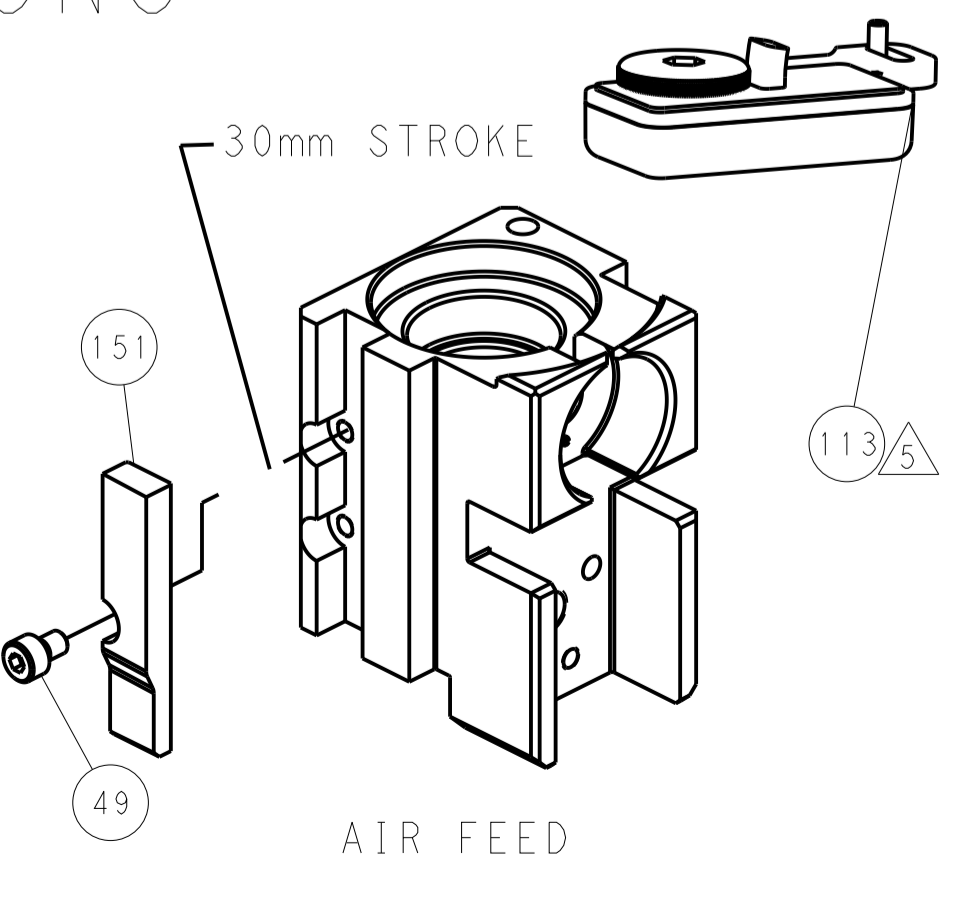
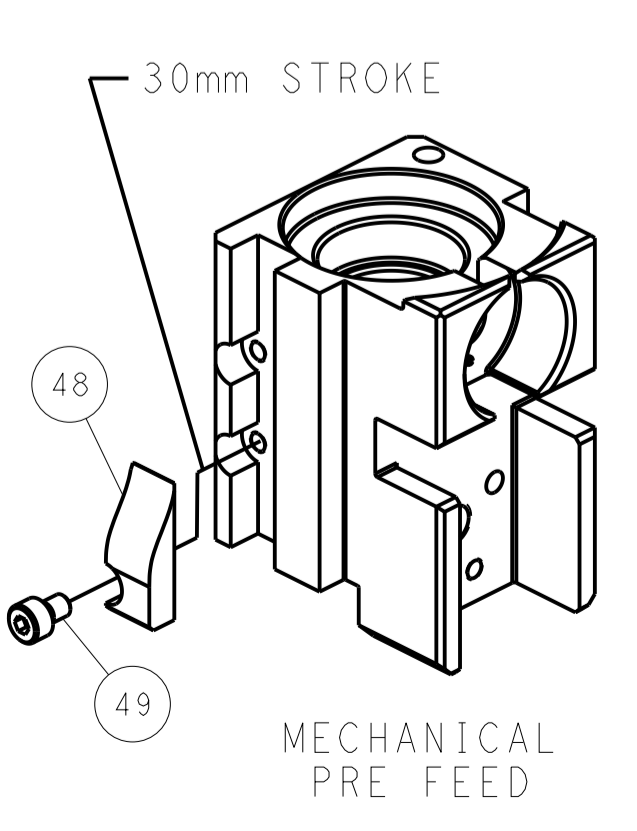
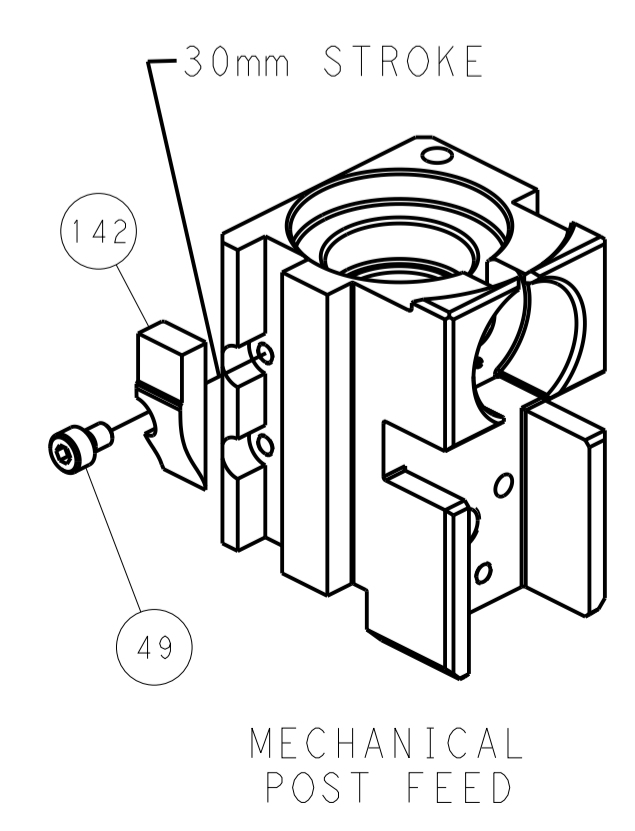
## PNEUMATIC



## FEED SPRING SETTING POSITION (SHOWN FROM REAR SIDE)



# CAM POSITIONS



**PACIFIC VERSION**  
 Shown on sheets 3 of 4 & 4 of 4  
 (Atlantic version shown on sheets 1 of 4 & 2 of 4)

|  |         |  |  |  |                                  |                 |                           |
|--|---------|--|--|--|----------------------------------|-----------------|---------------------------|
| DIMENSIONS:                            |         | TOLERANCES UNLESS OTHERWISE SPECIFIED: |  | DWN: L. ZHANG 20NOV2012                |                                  | TE Connectivity |                           |
| mm                                     | 0 PLC   | ±                                      |  | CHK: L. ZHANG 20NOV2012                | NAME: Ocean Side Feed Applicator |                 | Harrisburg, PA 17105-3608 |
|  | 1 PLC   | ±                                      |  | APVD: S. XI 20NOV2012                  | RESTRICTED TO                    |                 |                           |
|  | 2 PLC   | ±                                      |  | PRODUCT SPEC                           | SCALE: 1:2                       |                 |                           |
|  | 3 PLC   | ±                                      |  | APPLICATION SPEC                       | SHEET 4 OF 4                     |                 |                           |
|  | 4 PLC   | ±                                      |  | WEIGHT                                 | REV E                            |                 |                           |
| MATERIAL:                              | FINISH: |  |  | A1 00779 ©=2151836                     |                                  |                 |                           |
| Customer Accessible Production Drawing |         |  |  | Customer Accessible Production Drawing |                                  |                 |                           |

# Mouser Electronics

Authorized Distributor

Click to View Pricing, Inventory, Delivery & Lifecycle Information:

[TE Connectivity:](#)

[2151836-1](#)