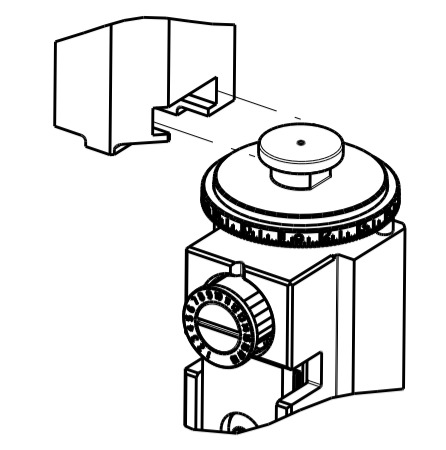


THIS DRAWING IS UNPUBLISHED. RELEASED FOR PUBLICATION.

BY TYCO ELECTRONICS CORPORATION. ALL RIGHTS RESERVED.

PART NUMBER	REVISION	DESCRIPTION	FEED TYPE
2151696-1	F	FINE CRIMP HEIGHT ADJUST	MECHANICAL
2151696-2	F	FINE CRIMP HEIGHT ADJUST	PNEUMATIC
7-2151696-1	F	MECHANICAL AND CRIMP TOOLING KIT	MECHANICAL
7-2151696-2	F	PNEUMATIC AND CRIMP TOOLING KIT	PNEUMATIC
7-2151696-7	A	CRIMP TOOLING KIT	-

ATLANTIC VERSION TERMINATOR INTERFACE ADAPTER



APPLICATOR DATA

CRIMP	SIZE	TYPE
WIRE	2.03 mm [.080]	F
INSUL	4.06 mm [.160]	O

APPLICATOR INSTRUCTIONS
408-35042

TERMINAL DATA: TE TERMINAL TE CRIMP SPECIFICATION

TERMINAL NAME: 2.5MM SYST., CONTACT SOCKET

WIRE STRIP LENGTH	INSULATION DIAMETER RANGE
5.20-5.80 mm [.205-.228 IN]	Ø 3.40mm MAX [.134 IN MAX]

TERMINAL APPLICATION SPECIFICATION: 114-18031-1

TERMINALS APPLIED

TE TERMINAL	TE TERMINAL	TE SEAL	TE SEAL	SEAL INSULATION DIAMETER RANGE
928984-2	928986-3	828920-1		Ø 1.2-2.0 mm
928984-4	928986-4	828920-2		Ø 1.2-2.0 mm
928984-5	928986-5			
928986-2				

WIRE SIZE	CRIMP HEIGHT mm [INCH]	CRIMP HEIGHT REFERENCE SETTING
1.00mm ²	1.43 +/- 0.05 [.056 +/- .002]	10.6
0.75mm ²	1.33 +/- 0.05 [.052 +/- .002]	11.6
0.50mm ²	1.23 +/- 0.05 [.048 +/- .002]	12.7

- 1 RECOMMENDED SPARE PARTS
- 2 REFER TO SUPPLIED INSTRUCTION SHEET FOR CLEANING, LUBRICATION AND STORAGE OF APPLICATOR.
- 3 APPLY PART NUMBER 2-23419-6 LOCTITE TO THREADS OF ITEM 242.
- 4 CRIMP HEIGHT REFERENCE SETTING WAS THE SETTING USED WHEN THE APPLICATOR WAS QUALIFIED AT THE FACTORY. ADJUSTMENT MAY BE NECESSARY WHEN RUNNING APPLICATOR IN THE FIELD.
- 5 UNLESS SPECIFIED OTHERWISE TORQUE VALUES SHALL BE USED PER DOCUMENT, 101-35000.
- 6 APPLY TORQ-SEAL IN ALLEN SOCKET TO FILL HOLE AFTER FLAT HD HAS BEEN ADJUSTED TO CORRECT HEIGHT AT QUALIFICATION. APPLY #1-23419-5 LOC-TITE TO THREADS.
- 7 WHEN USING TERMINAL 928984 USE ITEM 264 DIM 7.62 (.300) WHEN USING TERMINAL 928986 USE ITEM 34 DIM 12.70 (.500)
- 8 TERMINAL LUBRICANT IS RECOMMENDED.

*WARNING
ON INSTALLATION, SET WIRE DISC TO CRIMP HEIGHT REFERENCE SETTING FOR LARGEST WIRE SIZE. CRIMP HEIGHT REFERENCE SETTINGS GREATER THAN THE VALUE SHOWN MAY CAUSE DAMAGE TO THE CRIMP TOOLING, REFER TO THE INSTRUCTION SHEET FOR PROPER SETUP AND ADJUSTMENTS.

ATLANTIC VERSION
Shown on sheets 1 of 4 & 2 of 4
(Pacific version shown on sheets 3 of 4 & 4 of 4)

LOC		DIST		REVISIONS			
REV	DATE	BY	CHK	DESCRIPTION	DATE	OWN	APPV
A	66	-	-	-	-	-	-
C		ECR-16-005950			25APR2016	JH	JDG
D		ECR-18-013199			20AUG2018	FL	TE
E		ECR-19-009659			20JUN2019	FJ	TE
F		ECR-20-015814			09NOV2020	JWC	GB

7	-	1	1	1	1	1752356-4	SUPPORT, TERMINAL	264
	-	1	1	1	1	455888-2	SPACER, CRIMPER	263
	-	1	1	1	1	2119791-9	DEPRESSOR, WIRE	262
	-	1	1	1	1	2119943-1	WASHER, SPACER	261
	-	1	-	1	-	2119641-1	FEED CAM, AIR FEED	248
	-	1	1	1	1	2119082-7	CAM, SNAIL, INSULATION ADJUSTMENT	244
	-	1	1	1	1	2079764-1	WASHER, WAVE SPRING, CREST-TO-CREST	243
3	-	1	1	1	1	2119083-1	RETAINER, INSULATION DIAL	242
	-	1	1	1	1	7-18023-7	SCR, SKT HD CAP M3 X 4.0	241
	-	1	-	1	-	2119580-1	MECHANICAL FEED ASSEMBLY	239
	-	1	-	1	-	2844940-1	AIR FEED MODULE	238
	REF	REF	REF	REF	REF	994970-2	COUNTER, MAGNETIC	164
	-	1	1	1	1	1-18028-2	WASHER, FLAT, REG M4	119
8	-	1	1	1	1	2119955-1	ASSY, LUBRICATOR, SIDE FEED	113
	-	1	1	1	1	2844908-1	SCREW, LOCKING	99
	-	1	1	1	1	2844907-1	POST, LOCKING	98
	-	1	1	1	1	455888-4	SPACER, CRIMPER	82
	-	1	1	1	1	1803607-3	DOCUMENTATION PACKAGE	71
	-	1	1	1	1	2119740-1	TAG, IDENTIFICATION	67
	-	2	2	2	2	2168078-1	SCREW, DRIVE, RH, RoHS, 2 x .188	66
	-	1	1	1	1	2168083-2	SCR, SKT HD CAP, RoHS, M4 X 8.0	60
	-	1	1	1	1	5-18022-5	SCR, HEX HD CAP, M4 X 6.0	59
6	-	1	1	1	1	985575-3	SCR, FLT SKT HD CAP M3 X 10.0	57
	-	1	1	1	1	1338685-1	PAWL, FEED	56
	-	4	4	4	4	2168083-3	SCR, SKT HD CAP, RoHS, M4 X 12.0	54
	-	2	2	2	2	2168083-3	SCR, SKT HD CAP, RoHS, M4 X 12.0	53
	-	1	1	1	1	5018030-1	NUT, HEX, REG, RoHS, M3	52
	-	1	1	1	1	811242-5	BUMPER, HOLD DOWN	51
	-	1	1	1	1	690753-2	SPACER, TONKER	50
	-	1	2	1	2	18023-9	SCR, SKT HD CAP M4 X 6.0	49
	-	-	1	-	1	2119652-1	FEED CAM, PRE FEED	48
	-	-	1	-	1	2119653-1	FEED CAM, POST FEED	47
	-	1	1	1	1	1803583-9	APPLICATOR BASIC ASSEMBLY, SF	46
	-	1	1	1	1	1803515-1	RAM ASSEMBLY, SF ATLANTIC	44
	-	1	1	1	1	1803602-1	SCR, BHSC, RoHS (M8 X 25)	41
7	-	1	1	1	1	1752356-6	SUPPORT, TERMINAL	34
	-	2	2	2	2	2079383-5	SCR, BHSC, RoHS (M4 X 20)	33
	-	2	2	2	2	2-2844962-8	SPACER, CYLINDRICAL, STRIP GUIDE	30
	-	1	1	1	1	2844992-1	ASSEMBLY, STRIP GUIDE	29
	-	1	1	1	1	455888-5	SPACER, CRIMPER	28
	-	1	1	1	1	1320928-6	STRIP GUIDE	24
	-	1	1	1	1	2168083-2	SCR, SKT HD CAP, RoHS, M4 X 8.0	21
	-	1	1	1	1	1-18028-2	WASHER, FLAT, REG M4	20
	-	1	1	1	1	2119533-1	STRIPPER, SIDE FEED	19
1	-	1	1	1	1	2119806-1	INSERT, SHEAR	13
	-	1	1	1	1	3-22280-3	SPRING, COMPRESSION	12
	-	1	1	1	1	1-356885-3	STOP, SHEAR	11
1	-	1	1	1	1	2119805-1	SHEAR HOLDER, FRONT	10
1	-	1	1	1	1	318707-4	FLOATING SHEAR, FRONT	9
1	1	2	2	1	1	7-1333204-3	ANVIL, COMBINATION	8
	-	1	1	1	1	6-240641-4	SPACER	7
	-	-	-	-	-	-	-	6
	-	1	1	1	1	2119781-5	DEPRESSOR, SHEAR	5
	-	1	1	1	1	238011-9	BLOCK, CRIMPER SPACER	4
1	1	2	2	1	1	3-2119784-1	CRIMPER, INSULATION O PREMIUM	3
	-	1	1	1	1	455888-5	SPACER, CRIMPER	2
1	1	2	2	1	1	1-456405-3	CRIMPER, WIRE PREMIUM	1
	-	77	-72	-71	-2	-1	PART NO	
							DESCRIPTION	ITEM NO

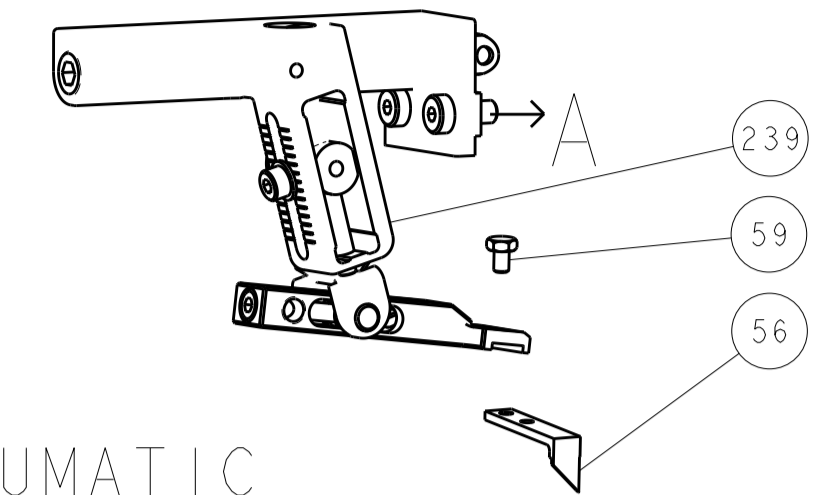
THE INFORMATION CONTAINED HEREIN IS UNCLASSIFIED EXCEPT WHERE SHOWN OTHERWISE. IT IS THE POLICY OF TYCO ELECTRONICS CORPORATION TO MAINTAIN THE INFORMATION CONTAINED HEREIN AS UNCLASSIFIED INFORMATION UNLESS INDICATED OTHERWISE.

DATE: 31 JUL 2012	BY: G. BAILEY	CHK: S. XI	APPV: S. XI
DIMENSIONS: mm			
TOLERANCES UNLESS OTHERWISE SPECIFIED: 0 PLC ± .015, 1 PLC ± .015, 2 PLC ± .015, 3 PLC ± .015, 4 PLC ± .015, ANGLES ± .015			
MATERIAL:	FINISH:	WEIGHT:	SCALE: 1:2
CUSTOMER ACCESSIBLE PRODUCTION DRAWING		SHEET 1 OF 4	REV F

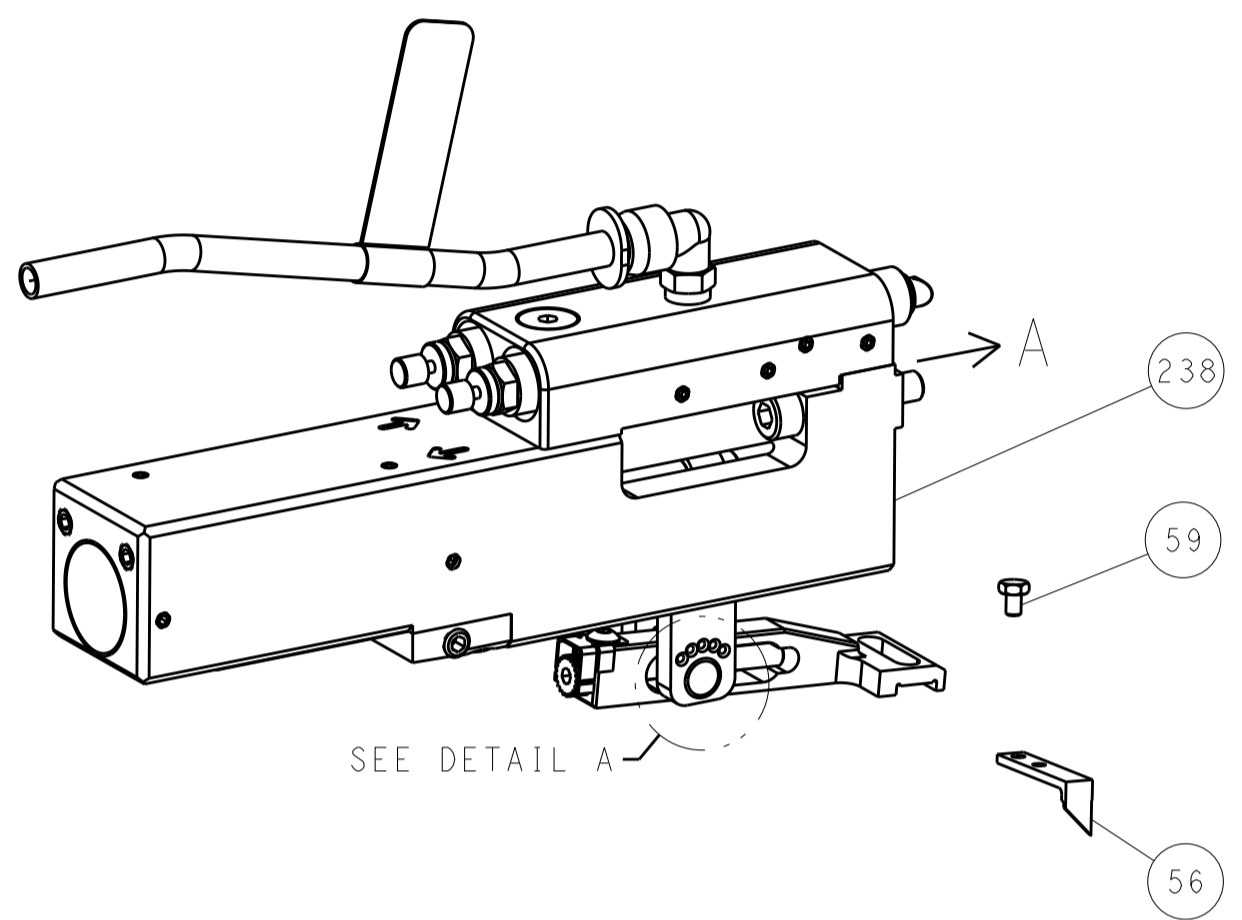
Customer Accessible Production Drawing SCALE 1:2 SHEET 1 OF 4 REV F

LOC	DIST	REV	DATE	BY	CHKD	APVD
A	66					

FEED TYPE MECHANICAL



PNEUMATIC

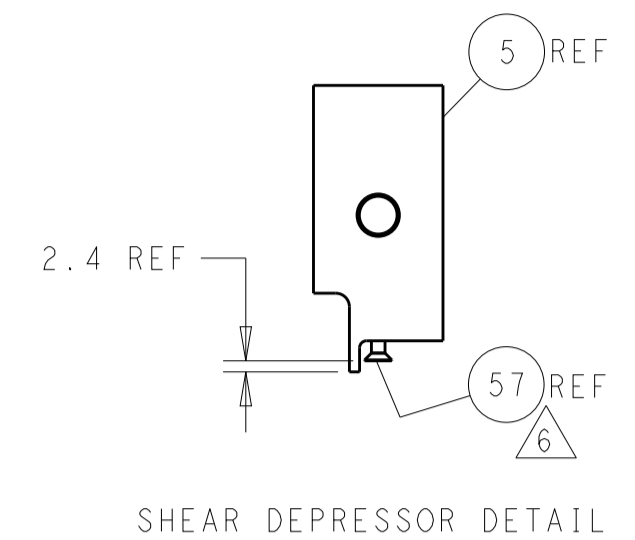
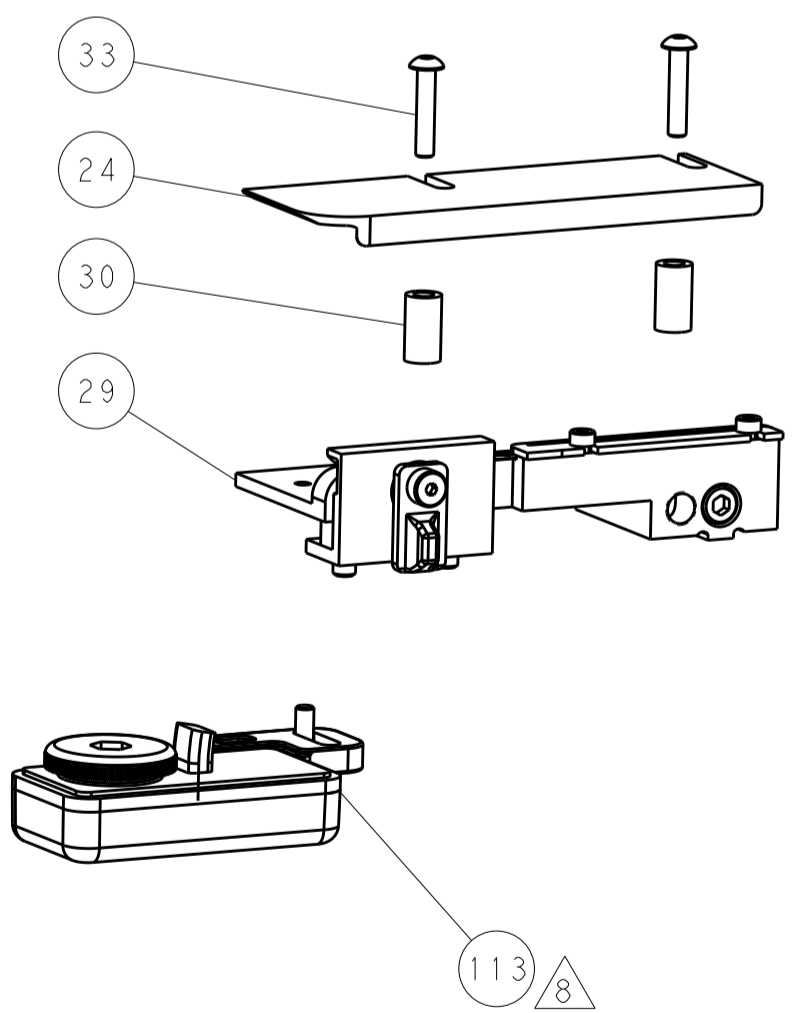
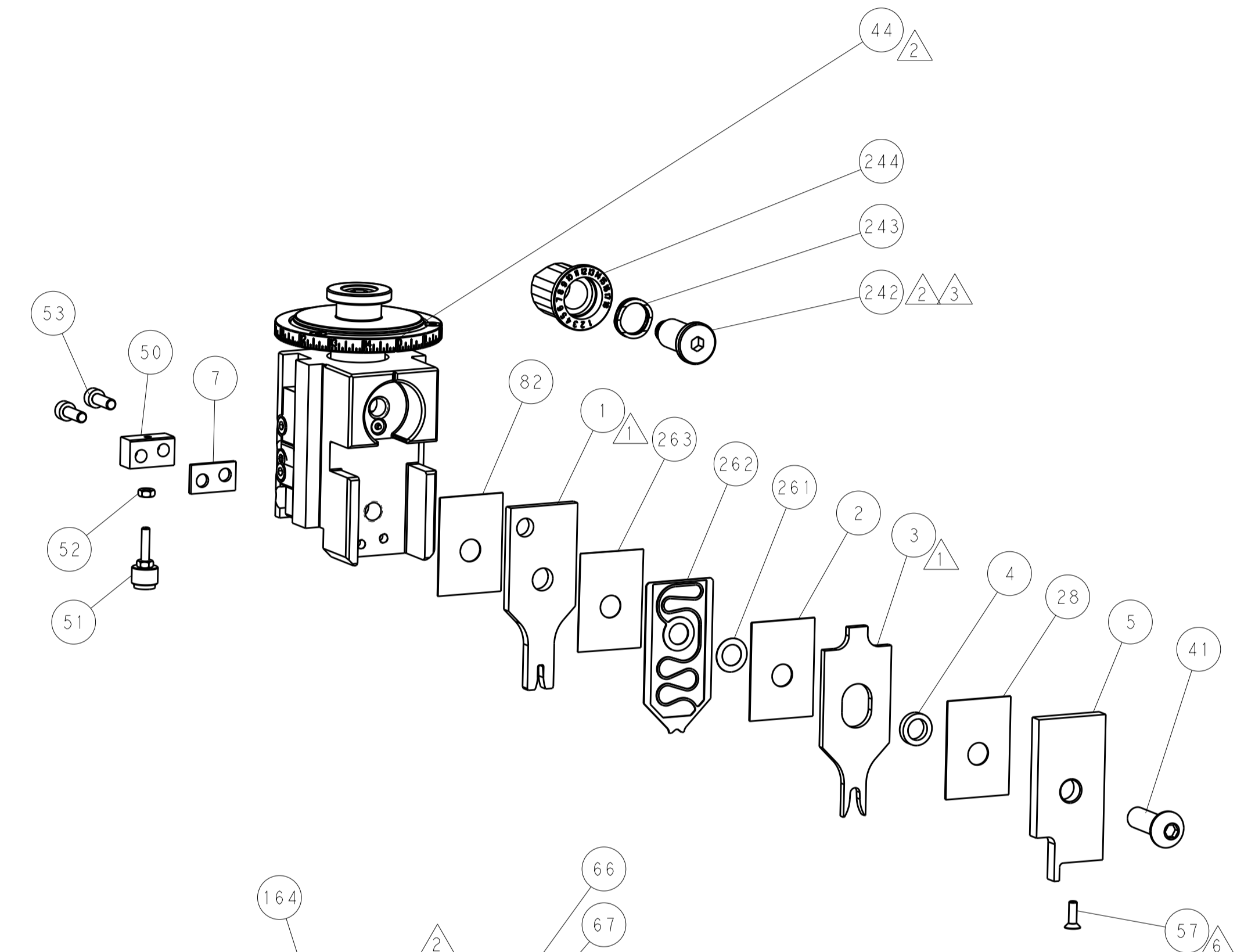


FEED SPRING SETTING POSITION (SHOWN FROM REAR SIDE)

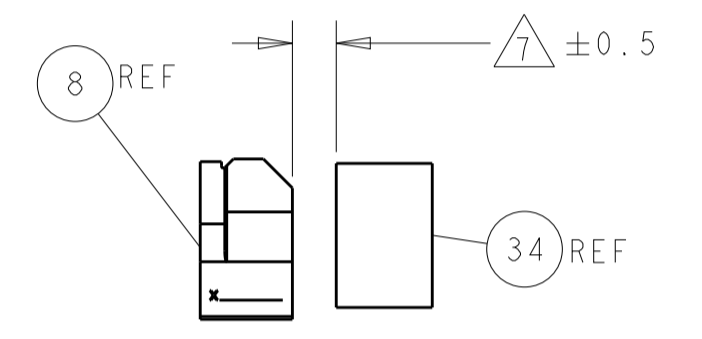


DETAIL A

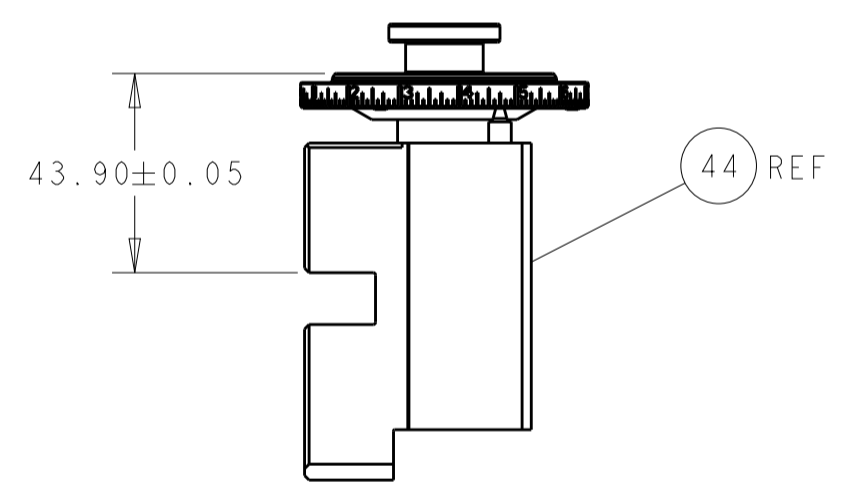
CAM POSITIONS



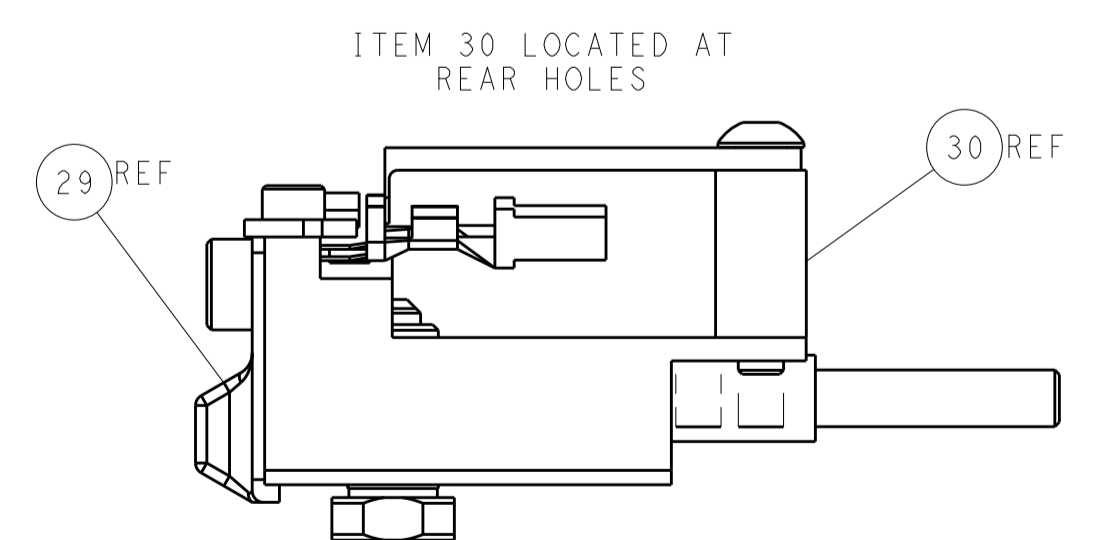
SHEAR DEPRESSOR DETAIL



TERMINAL SUPPORT LOCATION



RAM SET-UP



FEED TRACK POSITION GUIDE BY INSULATION BARREL

ATLANTIC VERSION
 Shown on sheets 1 of 4 & 2 of 4
 (Pacific version shown on sheets 3 of 4 & 4 of 4)

DIMENSIONS: mm 		TOLERANCES UNLESS OTHERWISE SPECIFIED: 0 PLC ± 1 PLC ± 2 PLC ± 3 PLC ± 4 PLC ± ANGLES ±		DWN T. YIN 31 JUL 2012 CHK G. BAILEY 31 JUL 2012 APVD S. XI 31 JUL 2012		TE Connectivity Harrisburg, PA 17105-3608	
MATERIAL:		FINISH:		NAME: Ocean Side Feed Applicator		SIZE: A1 CAGE CODE: 00779 DRAWING NO: 2151696	
Customer Accessible Production Drawing				SCALE: 1:2		SHEET 2 OF 4 REV F	

PART NUMBER	REVISION	DESCRIPTION	FEED TYPE
2-2151696-1	F	FINE CRIMP HEIGHT ADJUST	MECHANICAL
2-2151696-2	F	FINE CRIMP HEIGHT ADJUST	PNEUMATIC
7-2151696-7	A	CRIMP TOOLING KIT	-

PACIFIC VERSION TERMINATOR
 INTERFACE ADAPTER



APPLICATOR DATA		
CRIMP	SIZE	TYPE
WIRE	2.03 mm [.080]	F
INSUL	4.06 mm [.160]	O

APPLICATOR INSTRUCTIONS
 408-35042

TERMINAL DATA: TE TERMINAL		TE CRIMP SPECIFICATION	
TERMINAL NAME: 2.5MM SYST., CONTACT SOCKET			
WIRE STRIP LENGTH		INSULATION DIAMETER RANGE	
5.20-5.80 mm [1.205-.228 IN]		Ø 3.40mm MAX [1.134 IN MAX]	
TERMINAL APPLICATION SPECIFICATION	114-18031-1	-	-
TERMINALS APPLIED			
TE TERMINAL	TE TERMINAL	TE SEAL	TE SEAL
928984-2	928986-3	828920-1	
928984-4	928986-4	828920-2	
928984-5	928986-5		
928986-2			

WIRE SIZE	CRIMP HEIGHT mm [INCH]	CRIMP HEIGHT REFERENCE SETTING
1.00mm2	1.43 +/- 0.05 [1.056 +/- .002]	10.6
0.75mm2	1.33 +/- 0.05 [1.052 +/- .002]	11.6
0.50mm2	1.23 +/- 0.05 [1.048 +/- .002]	12.7

- RECOMMENDED SPARE PARTS
- REFER TO SUPPLIED INSTRUCTION SHEET FOR CLEANING, LUBRICATION AND STORAGE OF APPLICATOR.
- APPLY PART NUMBER 2-23419-6 LOCTITE TO THREADS OF ITEM 242.
- CRIMP HEIGHT REFERENCE SETTING WAS THE SETTING USED WHEN THE APPLICATOR WAS QUALIFIED AT THE FACTORY. ADJUSTMENT MAY BE NECESSARY WHEN RUNNING APPLICATOR IN THE FIELD.
- UNLESS SPECIFIED OTHERWISE TORQUE VALUES SHALL BE USED PER DOCUMENT, 101-35000.
- APPLY TORQ-SEAL IN ALLEN SOCKET TO FILL HOLE AFTER FLAT HD HAS BEEN ADJUSTED TO CORRECT HEIGHT AT QUALIFICATION. APPLY #1-23419-5 LOC-TITE TO THREADS.
- WHEN USING TERMINAL 928984 USE ITEM 264 DIM 7.62 (.300) WHEN USING TERMINAL 928986 USE ITEM 34 DIM 12.70 (.500)
- TERMINAL LUBRICANT IS RECOMMENDED.

***WARNING**
 ON INSTALLATION, SET WIRE DISC TO CRIMP HEIGHT REFERENCE SETTING FOR LARGEST WIRE SIZE. CRIMP HEIGHT REFERENCE SETTINGS GREATER THAN THE VALUE SHOWN MAY CAUSE DAMAGE TO THE CRIMP TOOLING, REFER TO THE INSTRUCTION SHEET FOR PROPER SETUP AND ADJUSTMENTS.

PACIFIC VERSION
 Shown on sheets 3 of 4 & 4 of 4
 (Atlantic version shown on sheets 1 of 4 & 2 of 4)

LOC	DIST	REV	DATE	BY	APPV
A	66				

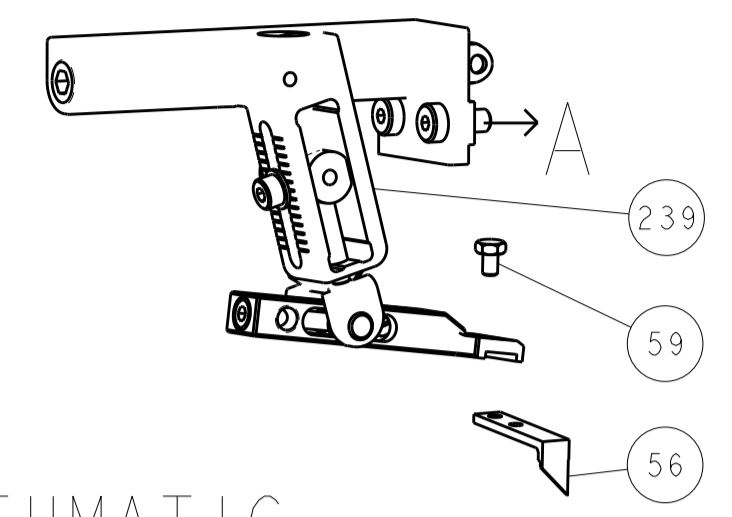
REVISIONS					
REV	DATE	BY	DESCRIPTION	DATE	APPV
-	-	-	SEE SHEET 1	-	-
-	1	1	1752356-4	SUPPORT, TERMINAL	264
-	1	1	455888-2	SPACER, CRIMPER	263
-	1	1	2119791-9	DEPRESSOR, WIRE	262
-	1	1	2119943-1	WASHER, SPACER	261
-	1	1	2119082-7	CAM, SNAIL, INSULATION ADJUSTMENT	244
-	1	1	2079764-1	WASHER, WAVE SPRING, CREST-TO-CREST	243
-	1	1	2119083-1	RETAINER, INSULATION DIAL	242
-	1	1	7-18023-7	SCR, SKT HD CAP M3 X 4.0	241
-	-	1	2119580-1	MECHANICAL FEED ASSEMBLY	239
-	1	-	2844940-1	AIR FEED MODULE	238
-	REF	REF	994970-2	COUNTER, MAGNETIC	164
-	1	-	2119641-2	FEED CAM, AIR FEED	151
-	1	1	2168083-8	SCR, SKT HD CAP, RoHS, M4 X 16	144
-	4	4	2168083-9	SCR, SKT HD CAP, RoHS, M4 X 20	143
-	-	1	2119653-2	FEED CAM, POST FEED	142
-	1	1	1-1803583-0	APPLICATOR BASIC ASSEMBLY, SF	141
-	1	1	1803516-1	RAM ASSEMBLY, SF PACIFIC	140
-	1	1	1-18028-2	WASHER, FLAT, REG M4	119
-	1	1	2119955-1	ASSY, LUBRICATOR, SIDE FEED	113
-	1	1	2844908-1	SCREW, LOCKING	99
-	1	1	2844907-1	POST, LOCKING	98
-	1	1	455888-4	SPACER, CRIMPER	82
-	1	1	1803607-3	DOCUMENTATION PACKAGE	71
-	1	1	2119740-1	TAG, IDENTIFICATION	67
-	2	2	2168078-1	SCREW, DRIVE, RH, RoHS, 2 x .188	66
-	1	1	5-18022-5	SCR, HEX HD CAP, M4 X 6.0	59
-	1	1	985575-3	SCR, FLT SKT HD CAP M3 X 10.0	57
-	1	1	1338685-1	PAWL, FEED	56
-	2	2	2168083-3	SCR, SKT HD CAP, RoHS, M4 X 12.0	53
-	1	1	5018030-1	NUT, HEX, REG, RoHS, M3	52
-	1	1	811242-5	BUMPER, HOLD DOWN	51
-	1	1	690753-2	SPACER, TONKER	50
-	1	2	18023-9	SCR, SKT HD CAP M4 X 6.0	49
-	-	1	2119652-1	FEED CAM, PRE FEED	48
-	1	1	1803602-1	SCR, BHSC, RoHS (M8 X 25)	41
-	1	1	1752356-6	SUPPORT, TERMINAL	34
-	2	2	2079383-5	SCR, BHSC, RoHS (M4 X 20)	33
-	2	2	2-2844962-8	SPACER, CYLINDRICAL, STRIP GUIDE	30
-	1	1	2844992-1	ASSEMBLY, STRIP GUIDE	29
-	1	1	455888-5	SPACER, CRIMPER	28
-	1	1	1320928-6	STRIP GUIDE	24
-	1	1	2168083-2	SCR, SKT HD CAP, RoHS, M4 X 8.0	21
-	1	1	1-18028-2	WASHER, FLAT, REG M4	20
-	1	1	2119533-1	STRIPPER, SIDE FEED	19
-	1	1	2119806-1	INSERT, SHEAR	13
-	1	1	3-22280-3	SPRING, COMPRESSION	12
-	1	1	1-356885-3	STOP, SHEAR	11
-	1	1	2119805-1	SHEAR HOLDER, FRONT	10
-	1	1	318707-4	FLOATING SHEAR, FRONT	9
1	1	1	7-1333204-3	ANVIL, COMBINATION	8
-	1	1	6-240641-4	SPACER	7
-	-	-	-	-	6
-	1	1	2119781-5	DEPRESSOR, SHEAR	5
-	1	1	238011-9	BLOCK, CRIMPER SPACER	4
1	1	1	3-2119784-1	CRIMPER, INSULATION O PREMIUM	3
-	1	1	455888-5	SPACER, CRIMPER	2
1	1	1	1-456405-3	CRIMPER, WIRE PREMIUM	1

DIMENSIONS:		TOLERANCES UNLESS OTHERWISE SPECIFIED:		MATERIAL:		FINISH:	
mm	0 PLC ±	1 PLC ±	2 PLC ±	3 PLC ±	4 PLC ±	ANGLES ±	FINISH

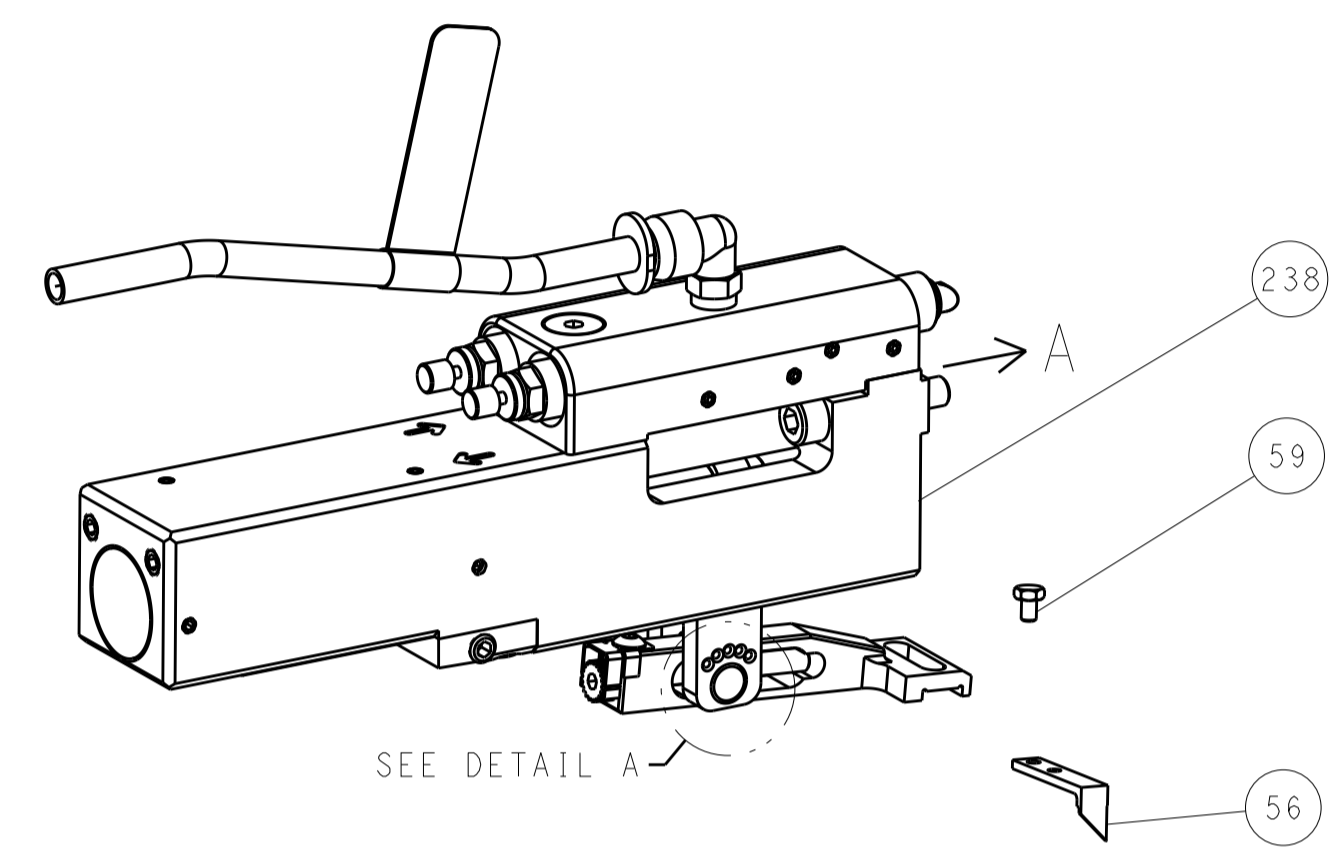
DATE	31 JUL 2012	CHK	G. BAILEY	DATE	31 JUL 2012
APPV	S. XI	DATE	31 JUL 2012	NAME	
PRODUCT SPEC		APPLICATION SPEC		SIZE	A1
WEIGHT		CAGE CODE	00779	DRAWING NO	2151696
Customer Accessible Production Drawing	SCALE	1:2	SHEET	3	OF 4

LOC		DIST		REVISIONS			
A	66	P	LTM	DESCRIPTION	DATE	OWN	APVD
-	-	-	-	SEE SHEET 1	-	-	-

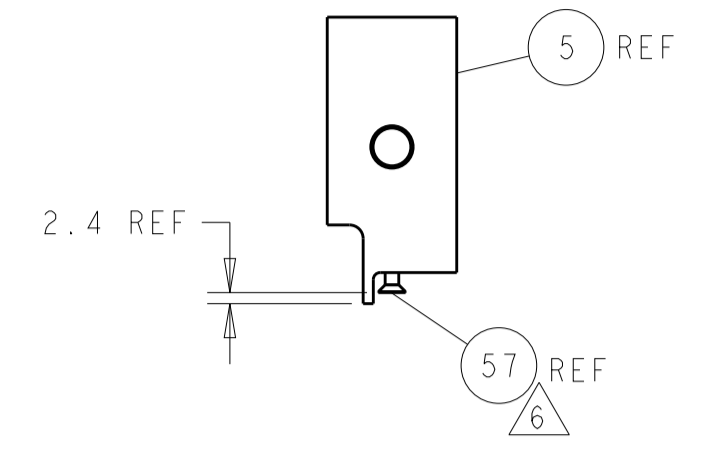
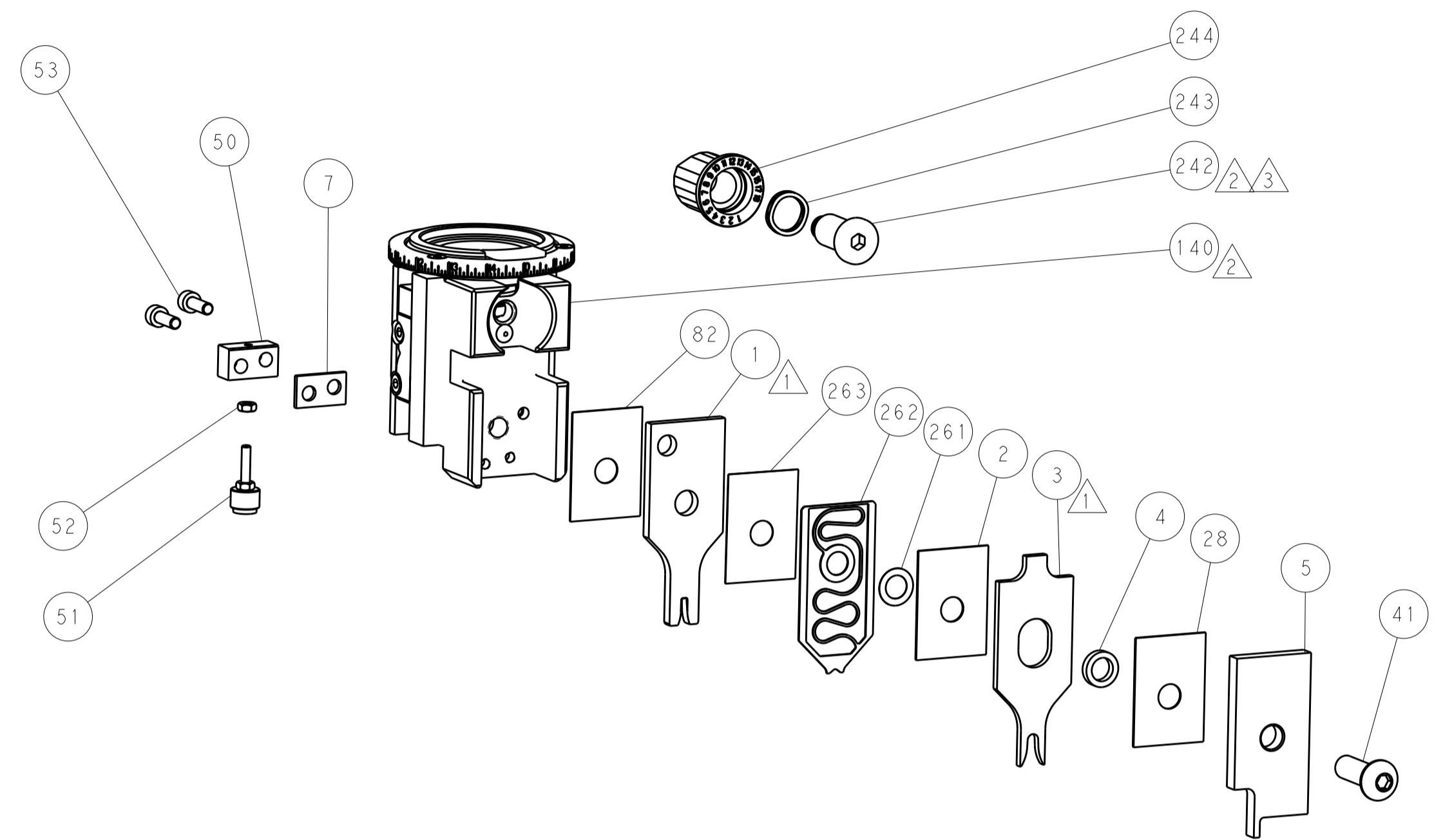
FEED TYPE MECHANICAL



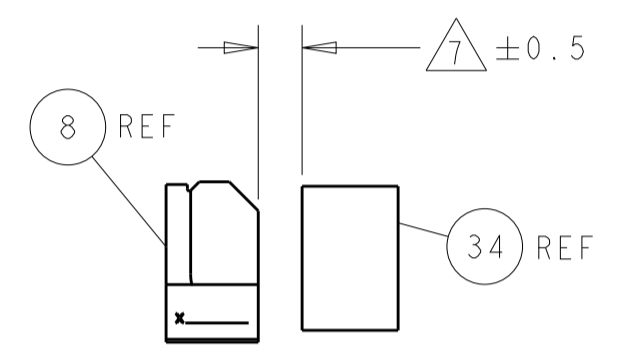
PNEUMATIC



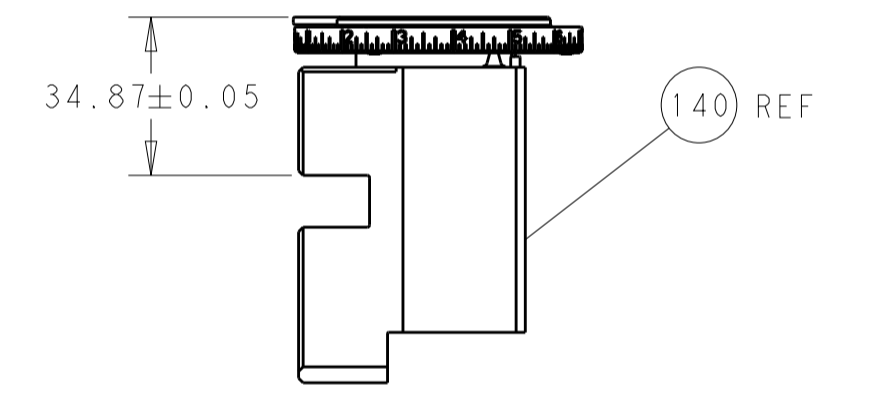
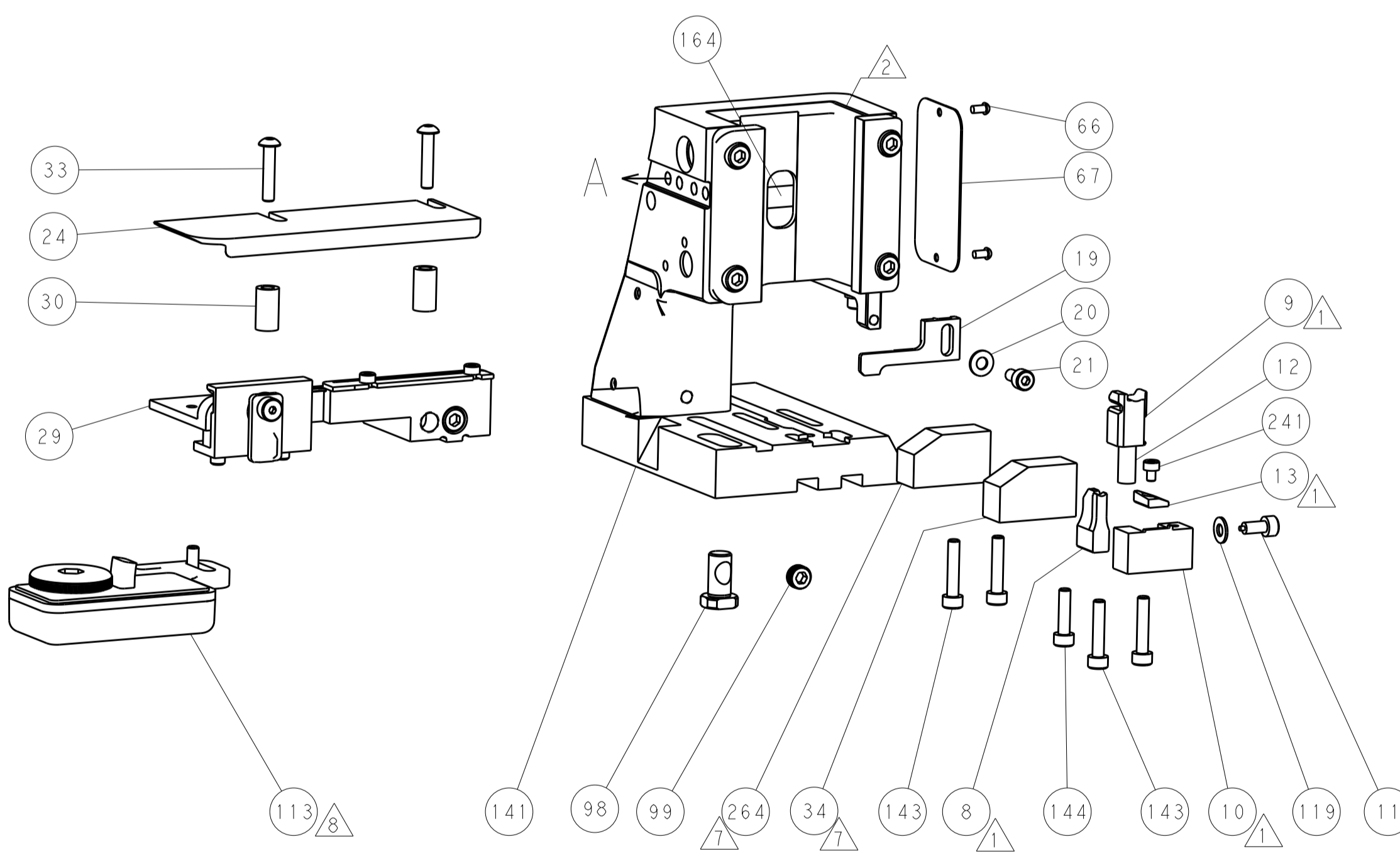
FEED SPRING SETTING POSITION (SHOWN FROM REAR SIDE)



SHEAR DEPRESSOR DETAIL

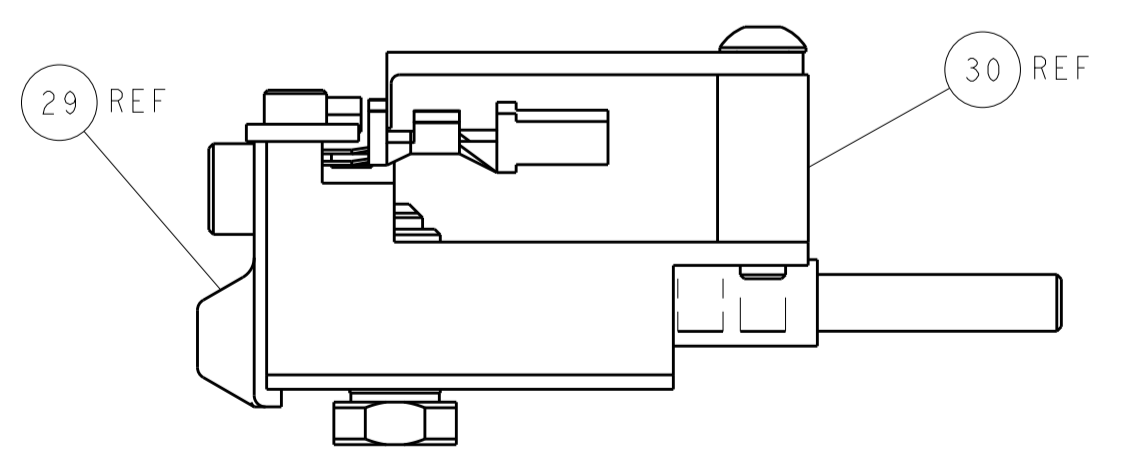


TERMINAL SUPPORT LOCATION



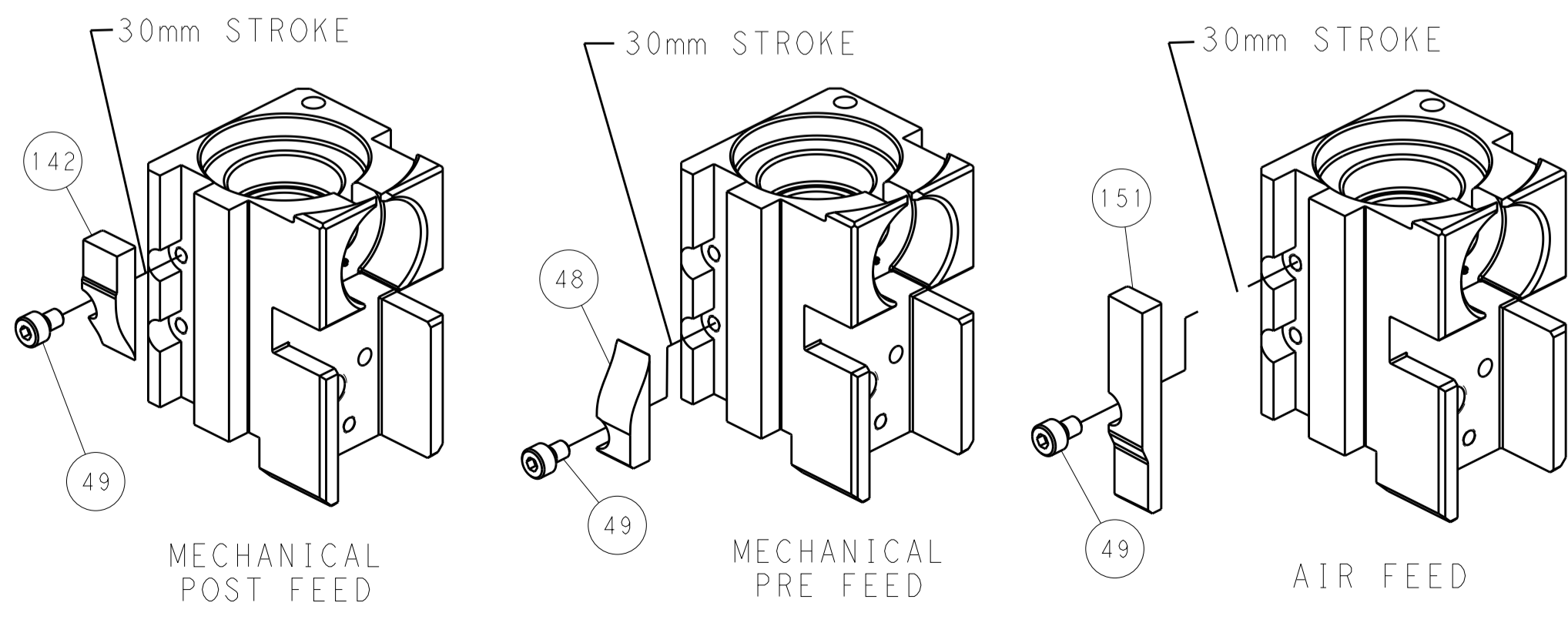
RAM SET-UP

ITEM 30 LOCATED AT REAR HOLES



FEED TRACK POSITION GUIDE BY INSULATION BARREL

CAM POSITIONS



PACIFIC VERSION
 Shown on sheets 3 of 4 & 4 of 4
 (Atlantic version shown on sheets 1 of 4 & 2 of 4)

DIMENSIONS:		TOLERANCES UNLESS OTHERWISE SPECIFIED:		DWN		31 JUL 2012		TE Connectivity	
mm		0 PLC	±	CHK		31 JUL 2012		Harrisburg, PA 17105-3608	
Ø		1 PLC	±	G. BAILEY		31 JUL 2012		NAME	
H		2 PLC	±	S. XI		31 JUL 2012		Ocean Side Feed	
L		3 PLC	±	APVD		31 JUL 2012		Applicator	
W		4 PLC	±	S. XI		31 JUL 2012		SIZE	
T		5 PLC	±	APVD		31 JUL 2012		CAGE CODE	
R		6 PLC	±	S. XI		31 JUL 2012		DRAWING NO	
A		7 PLC	±	APVD		31 JUL 2012		RESTRICTED TO	
S		8 PLC	±	S. XI		31 JUL 2012		A1	
C		9 PLC	±	APVD		31 JUL 2012		00779 ©=2151696	
O		10 PLC	±	S. XI		31 JUL 2012		SCALE	
F		11 PLC	±	APVD		31 JUL 2012		1:2	
D		12 PLC	±	S. XI		31 JUL 2012		SHEET	
I		13 PLC	±	APVD		31 JUL 2012		4	
E		14 PLC	±	S. XI		31 JUL 2012		OF	
C		15 PLC	±	APVD		31 JUL 2012		4	
A		16 PLC	±	S. XI		31 JUL 2012		REV	
M		17 PLC	±	APVD		31 JUL 2012		F	
A		18 PLC	±	S. XI		31 JUL 2012		Customer Accessible Production Drawing	
S		19 PLC	±	APVD		31 JUL 2012		SCALE 1:2 SHEET 4 OF 4 REV F	
I		20 PLC	±	S. XI		31 JUL 2012		SHEETS 1 & 2 ARE NOT REQUIRED FOR PACIFIC VERSION	
E		21 PLC	±	APVD		31 JUL 2012			
C		22 PLC	±	S. XI		31 JUL 2012			
A		23 PLC	±	APVD		31 JUL 2012			
M		24 PLC	±	S. XI		31 JUL 2012			
A		25 PLC	±	APVD		31 JUL 2012			
S		26 PLC	±	S. XI		31 JUL 2012			
I		27 PLC	±	APVD		31 JUL 2012			
E		28 PLC	±	S. XI		31 JUL 2012			
C		29 PLC	±	APVD		31 JUL 2012			
A		30 PLC	±	S. XI		31 JUL 2012			
M		31 PLC	±	APVD		31 JUL 2012			
A		32 PLC	±	S. XI		31 JUL 2012			
S		33 PLC	±	APVD		31 JUL 2012			
I		34 PLC	±	S. XI		31 JUL 2012			
E		35 PLC	±	APVD		31 JUL 2012			
C		36 PLC	±	S. XI		31 JUL 2012			
A		37 PLC	±	APVD		31 JUL 2012			
M		38 PLC	±	S. XI		31 JUL 2012			
A		39 PLC	±	APVD		31 JUL 2012			
S		40 PLC	±	S. XI		31 JUL 2012			
I		41 PLC	±	APVD		31 JUL 2012			
E		42 PLC	±	S. XI		31 JUL 2012			
C		43 PLC	±	APVD		31 JUL 2012			
A		44 PLC	±	S. XI		31 JUL 2012			
M		45 PLC	±	APVD		31 JUL 2012			
A		46 PLC	±	S. XI		31 JUL 2012			
S		47 PLC	±	APVD		31 JUL 2012			
I		48 PLC	±	S. XI		31 JUL 2012			
E		49 PLC	±	APVD		31 JUL 2012			
C		50 PLC	±	S. XI		31 JUL 2012			
A		51 PLC	±	APVD		31 JUL 2012			
M		52 PLC	±	S. XI		31 JUL 2012			
A		53 PLC	±	APVD		31 JUL 2012			
S		54 PLC	±	S. XI		31 JUL 2012			
I		55 PLC	±	APVD		31 JUL 2012			
E		56 PLC	±	S. XI		31 JUL 2012			
C		57 PLC	±	APVD		31 JUL 2012			
A		58 PLC	±	S. XI		31 JUL 2012			
M		59 PLC	±	APVD		31 JUL 2012			
A		60 PLC	±	S. XI		31 JUL 2012			
S		61 PLC	±	APVD		31 JUL 2012			
I		62 PLC	±	S. XI		31 JUL 2012			
E		63 PLC	±	APVD		31 JUL 2012			
C		64 PLC	±	S. XI		31 JUL 2012			
A		65 PLC	±	APVD		31 JUL 2012			

Mouser Electronics

Authorized Distributor

Click to View Pricing, Inventory, Delivery & Lifecycle Information:

[TE Connectivity:](#)

[2151696-2](#)