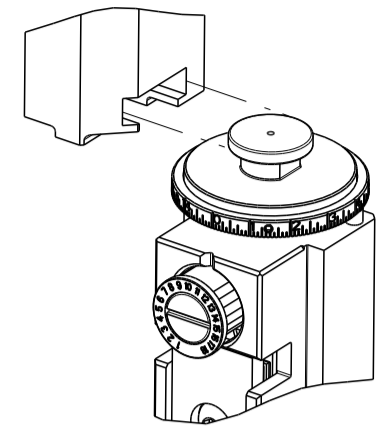


PART NUMBER	REVISION	DESCRIPTION	FEED TYPE
2151552-1	C	FINE CRIMP HEIGHT ADJUST	MECHANICAL
2151552-2	C	FINE CRIMP HEIGHT ADJUST	PNEUMATIC
7-2151552-1	C	MECHANICAL AND CRIMP TOOLING KIT	MECHANICAL
7-2151552-2	C	PNEUMATIC AND CRIMP TOOLING KIT	PNEUMATIC
7-2151552-7	A	CRIMP TOOLING KIT	-

ATLANTIC VERSION TERMINATOR INTERFACE ADAPTER



APPLICATOR DATA		
CRIMP	SIZE	TYPE
WIRE	2.15 mm [.085]	F
INSUL	2.29 mm [.090]	F

APPLICATOR INSTRUCTIONS 408-35042

TERMINAL DATA: TE TERMINAL		TE CRIMP SPECIFICATION	
TERMINAL NAME: CONTACT, BOBBIN COIL ANTENNA			
WIRE STRIP LENGTH		INSULATION DIAMETER RANGE	
4.14-4.52 mm [.163-.178 IN]		Ø1.40-2.06 mm [.055-.081 IN]	
TERMINAL APPLICATION SPECIFICATION	114-13013	-	-
TERMINALS APPLIED			
TE TERMINAL	TE TERMINAL	TE TERMINAL	TE TERMINAL
1832379-5	1832379-6		

WIRE SIZE	CRIMP HEIGHT mm [INCH]	CRIMP HEIGHT REFERENCE SETTING
18 AWG	1.37+/-0.05 [.054+/-0.002]	4.6
20 AWG	1.21+/-0.05 [.048+/-0.002]	6.6



- 1 RECOMMENDED SPARE PARTS
- 2 REFER TO SUPPLIED INSTRUCTION SHEET FOR CLEANING, LUBRICATION AND STORAGE OF APPLICATOR.
- 3 APPLY PART NUMBER 2-23419-6 LOCTITE TO THREADS OF ITEM 242.
- 4 CRIMP HEIGHT REFERENCE SETTING WAS THE SETTING USED WHEN THE APPLICATOR WAS QUALIFIED AT THE FACTORY. ADJUSTMENT MAY BE NECESSARY WHEN RUNNING APPLICATOR IN THE FIELD.
- 5. UNLESS SPECIFIED OTHERWISE TORQUE VALUES SHALL BE USED PER DOCUMENT, 101-35000.

LOC		DIST		REVISIONS					
A		66		P	LTN	DESCRIPTION	DATE	OWN	APPD
				1		DEVELOPMENT	06JAN2012	YY	SX
				A		RELEASED	06SEP2012	YY	SX
				B		ECR-19-001172	23JAN2019	JAH	TE
				C		ECR-19-003697	07MAR2019	TB	TE

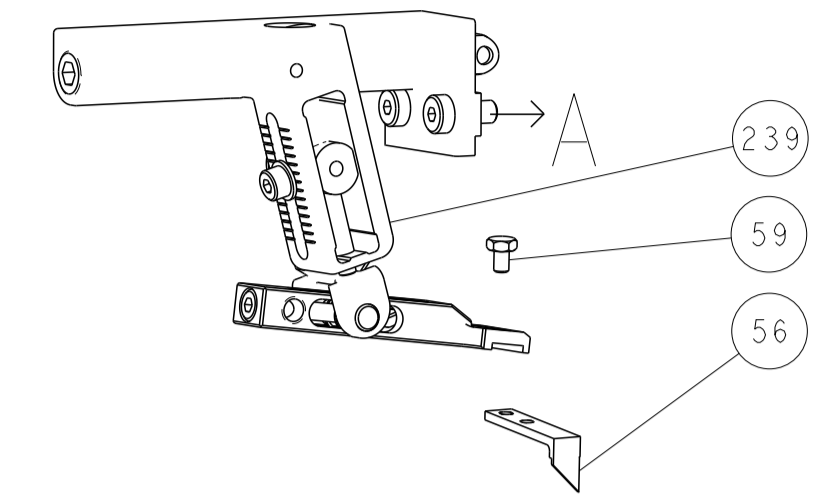
-	1	-	1	-	2119640-1	PUSH ROD, AIR FEED			250
-	1	-	1	-	1803259-1	BUSHING, FLANGED			249
-	1	-	1	-	2119641-1	FEED CAM, AIR FEED			248
-	1	1	1	1	2119082-1	CAM, SNAIL, INSULATION ADJUSTMENT			244
-	1	1	1	1	2079764-1	WASHER, WAVE SPRING, CREST-TO-CREST			243
-	1	1	1	1	2119083-1	RETAINER, INSULATION DIAL			242
-	1	1	1	1	7-18023-7	SCR, SKT HD CAP M3 X 4.0			241
-	-	1	-	1	2119580-1	MECHANICAL FEED ASSEMBLY			239
-	1	-	1	-	2063440-1	AIR FEED MODULE			238
-	2	-	2	-	21045-3	RING, RETAIN, EXTERN, 3/16 CRESCENT			172
-	REF	REF	REF	REF	994970-2	COUNTER, MAGNETIC			164
-	1	-	1	-	240638-1	SPRING, FEED FINGER			163
-	1	-	1	-	3-23627-7	PIN, RETAIN, GRVD, 3/16 X .854			137
-	1	-	1	-	2119799-1	HOLDER, FEED FINGER, AF			136
-	2	2	2	2	1-2079383-0	SCR, BHSC, RoHS (M3 X 6)			101
-	1	1	1	1	1633782-3	FENCE			100
-	1	1	1	1	2844908-1	SCREW, LOCKING			99
-	1	1	1	1	2844907-1	POST, LOCKING			98
-	1	1	1	1	1-690438-0	FRONT STRIP GUIDE			96
-	2	2	2	2	2168083-1	SCR, SKT HD CAP, RoHS, M3 X 8.0			95
-	1	1	1	1	455888-5	SPACER, CRIMPER			82
-	1	1	1	1	1803607-1	DOCUMENTATION PACKAGE			71
-	1	1	1	1	2119740-1	TAG, IDENTIFICATION			67
-	2	2	2	2	2168078-1	SCREW, DRIVE, RH, RoHS, 2 x .188			66
-	2	2	2	2	2-18032-5	SCR, SET, FLT PNT, M5 X 20.0			61
-	1	1	1	1	2168083-2	SCR, SKT HD CAP, RoHS, M4 X 8.0			60
-	1	1	1	1	5-18022-5	SCR, HEX HD CAP, M4 X 6.0			59
-	1	1	1	1	1338685-1	PAWL, FEED			56
-	4	4	4	4	2168083-3	SCR, SKT HD CAP, RoHS, M4 X 12.0			54
-	2	2	2	2	2168083-3	SCR, SKT HD CAP, RoHS, M4 X 12.0			53
-	1	1	1	1	5018030-1	NUT, HEX, REG, RoHS, M3			52
-	1	1	1	1	811242-5	BUMPER, HOLD DOWN			51
-	1	1	1	1	690753-2	SPACER, TONKER			50
-	1	2	1	2	18023-9	SCR, SKT HD CAP M4 X 6.0			49
-	-	1	-	1	2119652-1	FEED CAM, PRE FEED			48
-	-	1	-	1	2119653-1	FEED CAM, POST FEED			47
-	1	1	1	1	1803583-9	APPLICATOR BASIC ASSEMBLY, SF			46
-	1	1	1	1	1803515-1	RAM ASSEMBLY, SF ATLANTIC			44
-	1	1	1	1	1803602-1	SCR, BHSC, RoHS (M8 X 25)			41
-	1	1	1	1	1752356-1	SUPPORT, TERMINAL			34
-	2	2	2	2	2079383-5	SCR, BHSC, RoHS (M4 X 20)			33
-	2	2	2	2	2-2844962-6	SPACER, CYLINDRICAL, STRIP GUIDE			30
-	1	1	1	1	2844992-3	ASSEMBLY, STRIP GUIDE			29
-	1	1	1	1	1-455888-0	SPACER, CRIMPER			28
-	2	2	2	2	22283-1	SPRING, COMPRESSION			27
-	1	1	1	1	356835-1	LEVER, DRAG RELEASE			26
-	1	1	1	1	240792-1	DRAG, TERMINAL			25
-	1	1	1	1	1320928-2	STRIP GUIDE			24
-	1	1	1	1	980371-4	SCR, SKT HD SHLDR 5.0 DIA X 6.0			23
-	1	1	1	1	2168083-2	SCR, SKT HD CAP, RoHS, M4 X 8.0			21
-	2	2	2	2	1-18028-2	WASHER, FLAT, REG M4			20
-	1	1	1	1	2119533-1	STRIPPER, SIDE FEED			19
-	1	1	1	1	2119806-1	INSERT, SHEAR			13
-	1	1	1	1	3-22280-3	SPRING, COMPRESSION			12
-	1	1	1	1	1-356885-4	STOP, SHEAR			11
-	1	1	1	1	2119805-1	SHEAR HOLDER, FRONT			10
-	1	1	1	1	1803095-1	FLOATING SHEAR, FRONT			9
-	1	2	2	1	1	5-1633620-4	ANVIL, COMBINATION		8
-	1	1	1	1	1	5-240641-8	SPACER		7
-	-	-	-	-	-	-	-		6
-	1	1	1	1	1	2119757-9	DEPRESSOR, SHEAR		5
-	1	1	1	1	1	1-238011-8	BLOCK, CRIMPER SPACER		4
-	1	2	2	1	1	3-2119582-7	CRIMPER, INSULATION F PREMIUM		3
-	1	1	1	1	1	455888-8	SPACER, CRIMPER		2
-	1	2	2	1	1	5-1633609-8	CRIMPER, WIRE		1
-	77	-72	-71	-2	-1	PART NO			ITEM NO

ATLANTIC VERSION
Shown on sheets 1 of 4 & 2 of 4
(Pacific version shown on sheets 3 of 4 & 4 of 4)

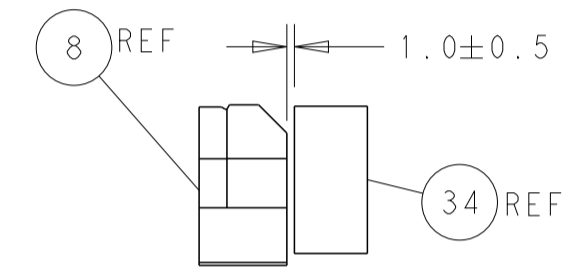
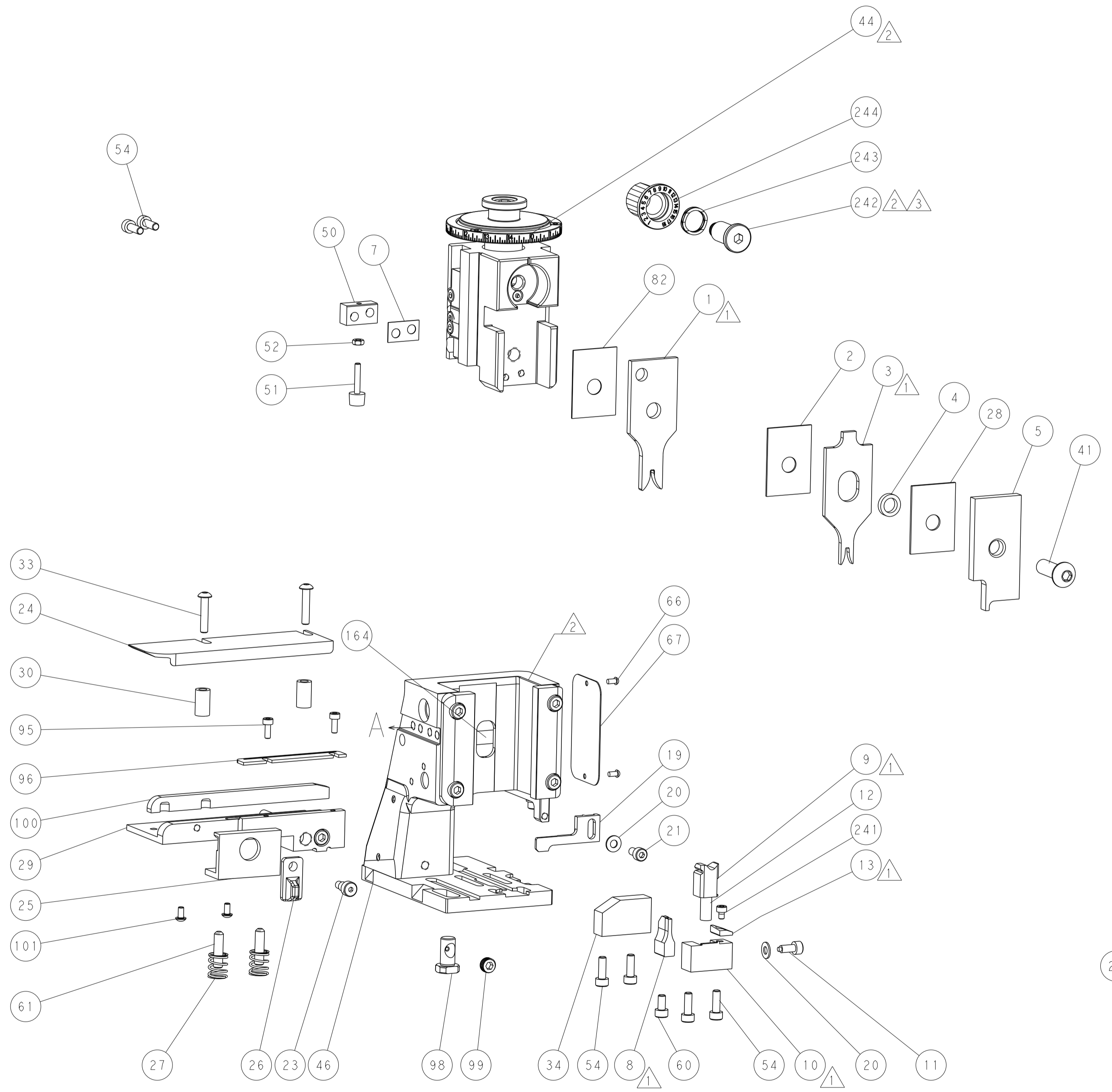
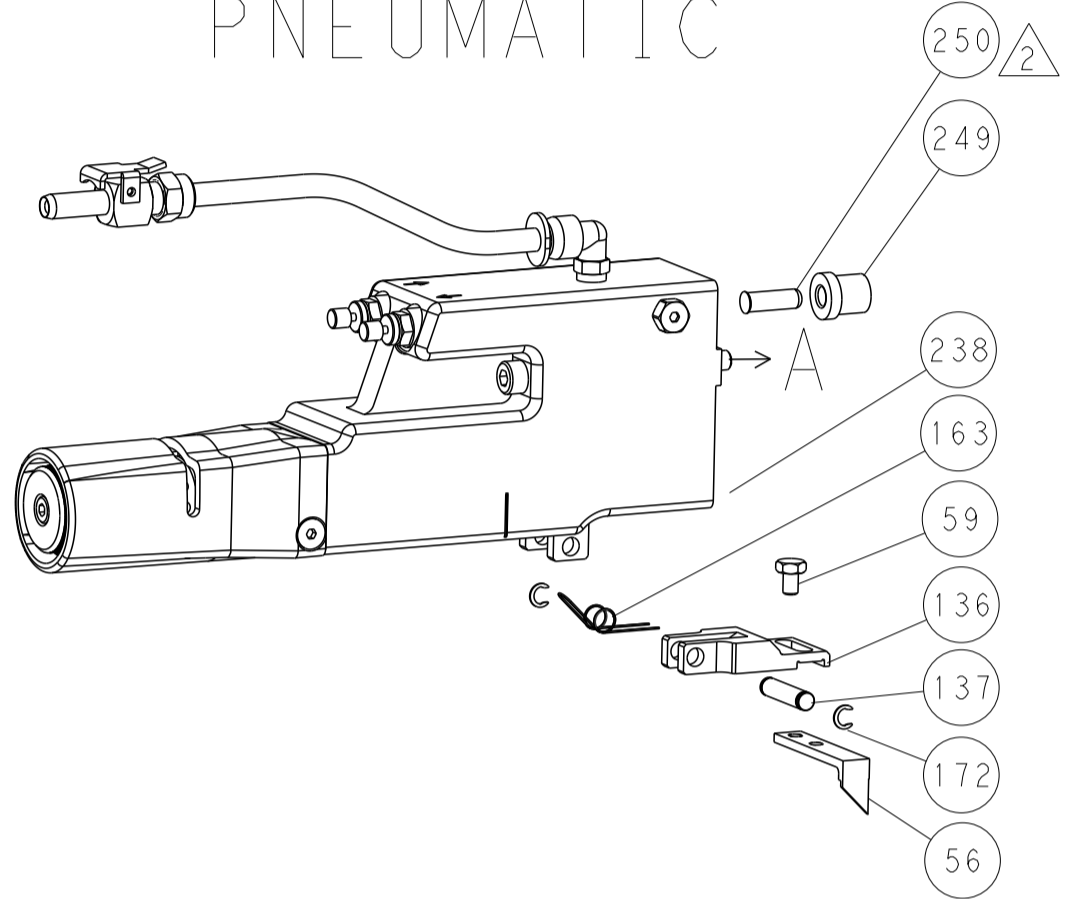
DIMENSIONS:		TOLERANCES UNLESS OTHERWISE SPECIFIED:		MATERIAL:		FINISH:		WEIGHT:		SCALE:		SHEET:		REV:				
mm	0 PLC ±	1 PLC ±	2 PLC ±	3 PLC ±	4 PLC ±	ANGLES	FINISH			Customer Accessible Production Drawing	SCALE	1:2	SHEET	1	OF	4	REV	C

LOC		DIST		REVISIONS			
P	LTN	DESCRIPTION	DATE	OWN	APVD		
-	-	SEE SHEET 1	-	-	-	-	-

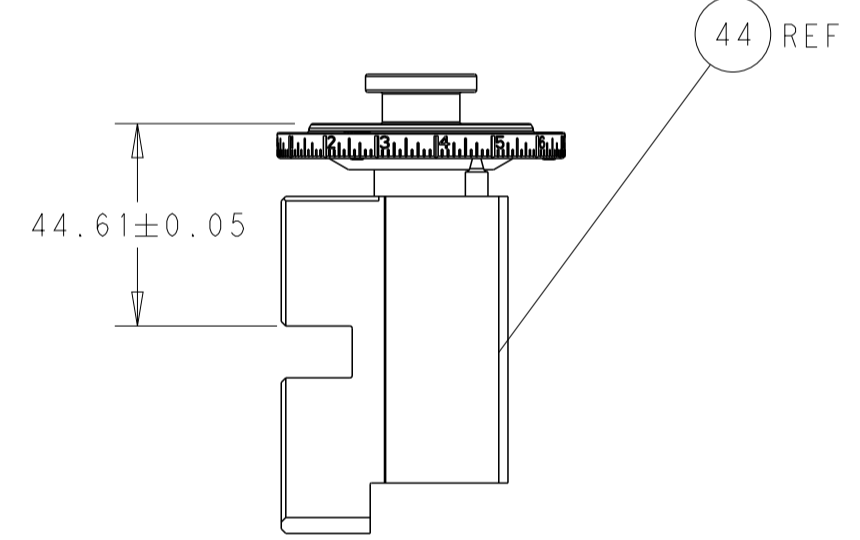
FEED TYPE MECHANICAL



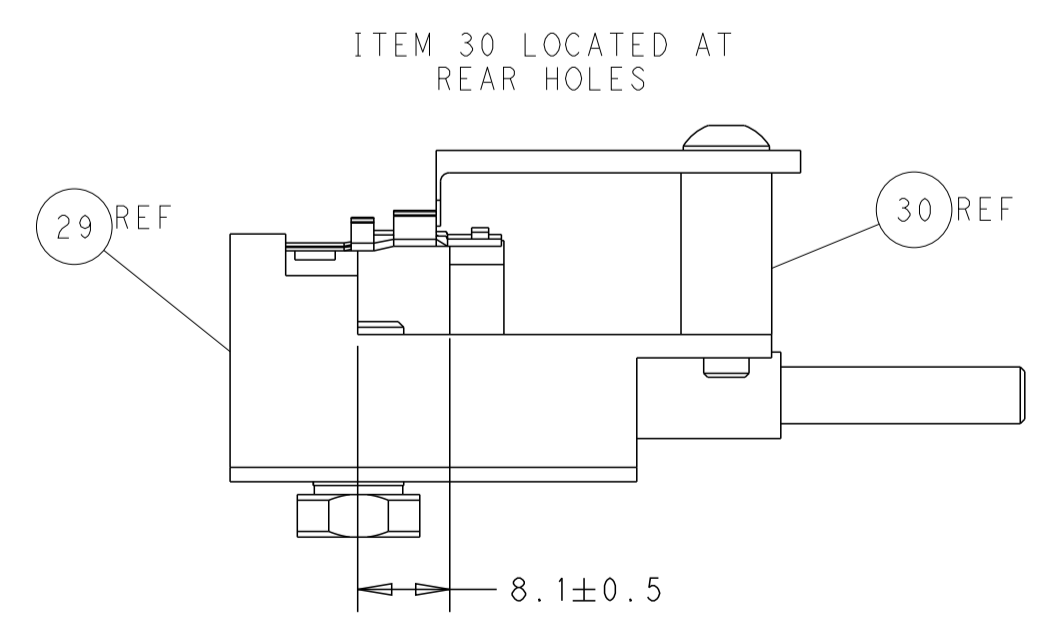
PNEUMATIC



TERMINAL SUPPORT LOCATION

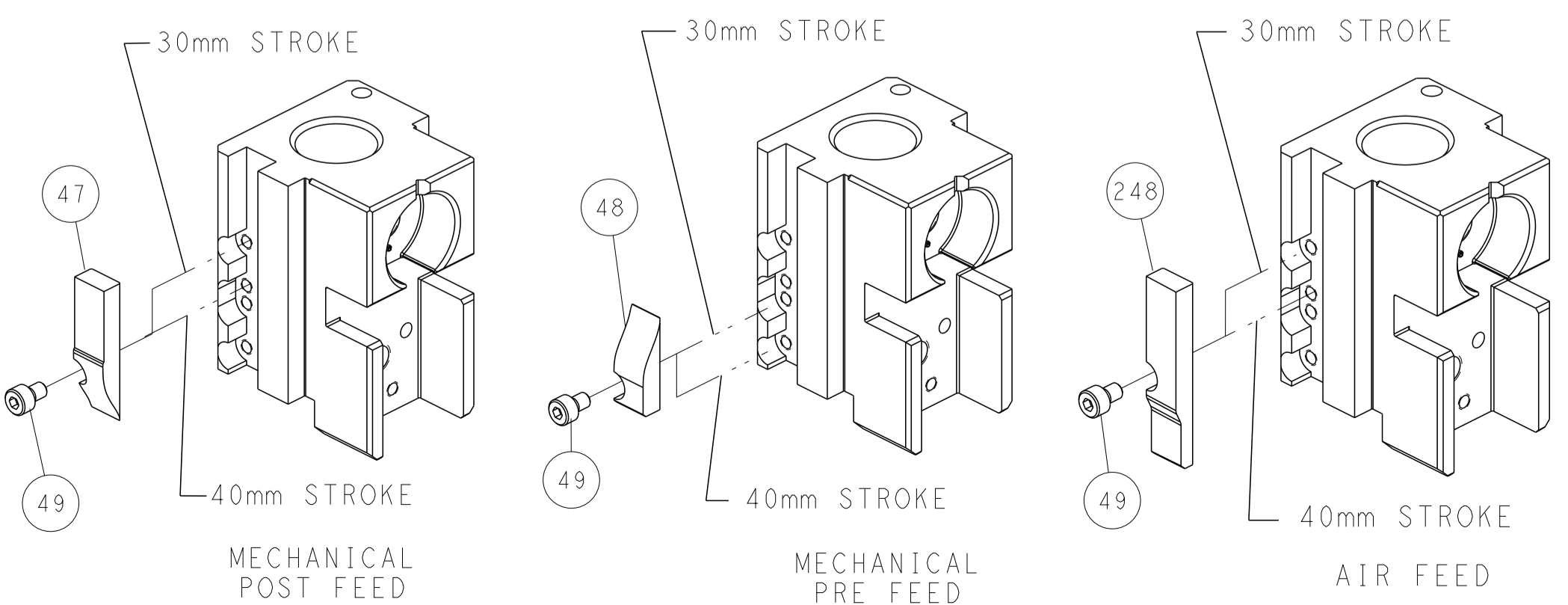


RAM SET-UP



FEED TRACK POSITION GUIDE BY WIRE BARREL

CAM POSITIONS



ATLANTIC VERSION
 Shown on sheets 1 of 4 & 2 of 4
 (Pacific version shown on sheets 3 of 4 & 4 of 4)

DIMENSIONS:		TOLERANCES UNLESS OTHERWISE SPECIFIED:		DWG Y. YIN 06JAN2012		TE Connectivity	
mm	0 PLC ±	1 PLC ±	2 PLC ±	3 PLC ±	4 PLC ±	Harrisburg, PA 17105-3608	
MATERIAL:		FINISH:		CHK G. BAILEY 06JAN2012		NAME Ocean Side Feed Applicator	
				S. XI 06JAN2012		SIZE CAGE CODE DRAWING NO RESTRICTED TO	
				APVD		A1 00779 ©=2151552	
				PRODUCT SPEC		Customer Accessible Production Drawing	
				APPLICATION SPEC		SCALE 1:2 SHEET 2 OF 4 REV C	
				WEIGHT		SHEETS 3 & 4 ARE NOT REQUIRED FOR ATLANTIC VERSION	

PART NUMBER	REVISION	DESCRIPTION	FEED TYPE
2-2151552-1	C	FINE CRIMP HEIGHT ADJUST	MECHANICAL
2-2151552-2	C	FINE CRIMP HEIGHT ADJUST	PNEUMATIC
7-2151552-7	A	CRIMP TOOLING KIT	-

PACIFIC VERSION TERMINATOR
 INTERFACE ADAPTER



APPLICATOR DATA

CRIMP	SIZE	TYPE
WIRE	2.15 mm [.085]	F
INSUL	2.29 mm [.090]	F

APPLICATOR INSTRUCTIONS
 408-35042

TERMINAL DATA: TE TERMINAL TE CRIMP SPECIFICATION

TERMINAL NAME: CONTACT, BOBBIN COIL ANTENNA

WIRE STRIP LENGTH	INSULATION DIAMETER RANGE
4.14-4.52 mm [1.63-.178 IN]	∅1.40-2.06 mm [.055-.081 IN]

TERMINAL APPLICATION SPECIFICATION 114-13013

TERMINALS APPLIED

TE TERMINAL	TE TERMINAL	TE TERMINAL	TE TERMINAL
1832379-5	1832379-6		

WIRE SIZE	CRIMP HEIGHT mm [INCH]	CRIMP HEIGHT REFERENCE SETTING
18 AWG	1.37+/-0.05 [.054+/-0.002]	4.6
20 AWG	1.21+/-0.05 [.048+/-0.002]	6.6

***WARNING**
 ON INSTALLATION, SET WIRE DISC TO CRIMP HEIGHT REFERENCE SETTING FOR LARGEST WIRE SIZE. CRIMP HEIGHT REFERENCE SETTINGS GREATER THAN THE VALUE SHOWN MAY CAUSE DAMAGE TO THE CRIMP TOOLING, REFER TO THE INSTRUCTION SHEET FOR PROPER SETUP AND ADJUSTMENTS.

- 1 RECOMMENDED SPARE PARTS
- 2 REFER TO SUPPLIED INSTRUCTION SHEET FOR CLEANING, LUBRICATION AND STORAGE OF APPLICATOR.
- 3 APPLY PART NUMBER 2-23419-6 LOCTITE TO THREADS OF ITEM 242.
- 4 CRIMP HEIGHT REFERENCE SETTING WAS THE SETTING USED WHEN THE APPLICATOR WAS QUALIFIED AT THE FACTORY. ADJUSTMENT MAY BE NECESSARY WHEN RUNNING APPLICATOR IN THE FIELD.
- 5. UNLESS SPECIFIED OTHERWISE TORQUE VALUES SHALL BE USED PER DOCUMENT, 101-35000.

LOC	DIST	REVISIONS					
A	66	P	LTN	DESCRIPTION	DATE	DWN	APVD
-	-	-	-	SEE SHEET 1	-	-	-

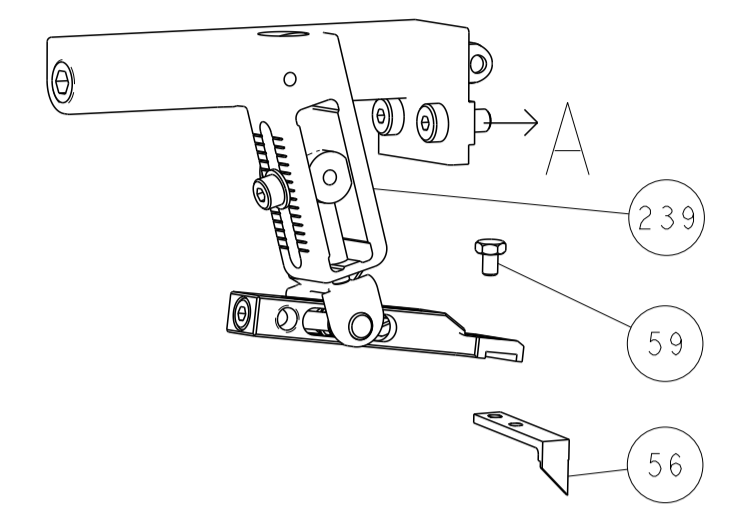
-	1	-	2119640-1	PUSH ROD, AIR FEED	250
-	1	-	1803259-1	BUSHING, FLANGED	249
-	1	1	2119082-1	CAM, SNAIL, INSULATION ADJUSTMENT	244
-	1	1	2079764-1	WASHER, WAVE SPRING, CREST-TO-CREST	243
-	1	1	2119083-1	RETAINER, INSULATION DIAL	242
-	1	1	7-18023-7	SCR, SKT HD CAP M3 X 4.0	241
-	-	1	2119580-1	MECHANICAL FEED ASSEMBLY	239
-	1	-	2063440-1	AIR FEED MODULE	238
-	2	-	21045-3	RING, RETAIN, EXTERN, 3/16 CRESCENT	172
-	REF	REF	994970-2	COUNTER, MAGNETIC	164
-	1	-	240638-1	SPRING, FEED FINGER	163
-	1	-	2119641-2	FEED CAM, AIR FEED	151
-	1	1	2168083-8	SCR, SKT HD CAP, RoHS, M4 X 16	144
-	4	4	2168083-9	SCR, SKT HD CAP, RoHS, M4 X 20	143
-	-	1	2119653-2	FEED CAM, POST FEED	142
-	1	1	1-1803583-0	APPLICATOR BASIC ASSEMBLY, SF	141
-	1	1	1803516-1	RAM ASSEMBLY, SF PACIFIC	140
-	1	-	3-23627-7	PIN, RETAIN, GRVD, 3/16 X .854	137
-	1	-	2119799-1	HOLDER, FEED FINGER, AF	136
-	2	2	1-2079383-0	SCR, BHSC, RoHS (M3 X 6)	101
-	1	1	1633782-3	FENCE	100
-	1	1	2844908-1	SCREW, LOCKING	99
-	1	1	2844907-1	POST, LOCKING	98
-	1	1	1-690438-0	FRONT STRIP GUIDE	96
-	2	2	2168083-1	SCR, SKT HD CAP, RoHS, M3 X 8.0	95
-	1	1	455888-5	SPACER, CRIMPER	82
-	1	1	1803607-1	DOCUMENTATION PACKAGE	71
-	1	1	2119740-1	TAG, IDENTIFICATION	67
-	2	2	2168078-1	SCREW, DRIVE, RH, RoHS, 2 x .188	66
-	2	2	2-18032-5	SCR, SET, FLT PNT, M5 X 20.0	61
-	1	1	5-18022-5	SCR, HEX HD CAP, M4 X 6.0	59
-	1	1	1338685-1	PAWL, FEED	56
-	2	2	2168083-3	SCR, SKT HD CAP, RoHS, M4 X 12.0	53
-	1	1	5018030-1	NUT, HEX, REG, RoHS, M3	52
-	1	1	811242-5	BUMPER, HOLD DOWN	51
-	1	1	690753-2	SPACER, TONKER	50
-	1	2	18023-9	SCR, SKT HD CAP M4 X 6.0	49
-	-	1	2119652-1	FEED CAM, PRE FEED	48
-	1	1	1803602-1	SCR, BHSC, RoHS (M8 X 25)	41
-	1	1	1752356-1	SUPPORT, TERMINAL	34
-	2	2	2079383-5	SCR, BHSC, RoHS (M4 X 20)	33
-	2	2	2-2844962-6	SPACER, CYLINDRICAL, STRIP GUIDE	30
-	1	1	2844992-3	ASSEMBLY, STRIP GUIDE	29
-	1	1	1-455888-0	SPACER, CRIMPER	28
-	2	2	22283-1	SPRING, COMPRESSION	27
-	1	1	356835-1	LEVER, DRAG RELEASE	26
-	1	1	240792-1	DRAG, TERMINAL	25
-	1	1	1320928-2	STRIP GUIDE	24
-	1	1	980371-4	SCR, SKT HD SHLDR 5.0 DIA X 6.0	23
-	1	1	2168083-2	SCR, SKT HD CAP, RoHS, M4 X 8.0	21
-	2	2	1-18028-2	WASHER, FLAT, REG M4	20
-	1	1	2119533-1	STRIPPER, SIDE FEED	19
-	1	1	2119806-1	INSERT, SHEAR	13
-	1	1	3-22280-3	SPRING, COMPRESSION	12
-	1	1	1-356885-4	STOP, SHEAR	11
-	1	1	2119805-1	SHEAR HOLDER, FRONT	10
-	1	1	1803095-1	FLOATING SHEAR, FRONT	9
-	1	1	5-1633620-4	ANVIL, COMBINATION	8
-	1	1	5-240641-8	SPACER	7
-	-	-	-	-	6
-	1	1	2119757-9	DEPRESSOR, SHEAR	5
-	1	1	1-238011-8	BLOCK, CRIMPER SPACER	4
-	1	1	3-2119582-7	CRIMPER, INSULATION F PREMIUM	3
-	1	1	455888-8	SPACER, CRIMPER	2
-	1	1	5-1633609-8	CRIMPER, WIRE	1

DIMENSIONS:		TOLERANCES UNLESS OTHERWISE SPECIFIED:		MATERIAL:		FINISH:		WEIGHT:		SCALE:		SHEET:		REV:	
mm	0 PLC ±	1 PLC ±	2 PLC ±	3 PLC ±	4 PLC ±	ANGLES	FINISH			Customer Accessible Production Drawing	1:2	3	of	4	C

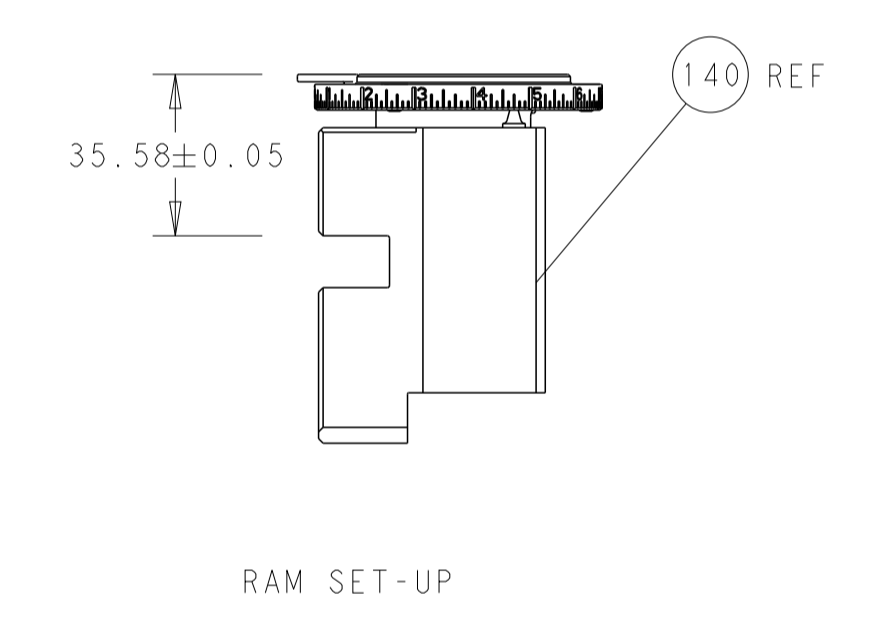
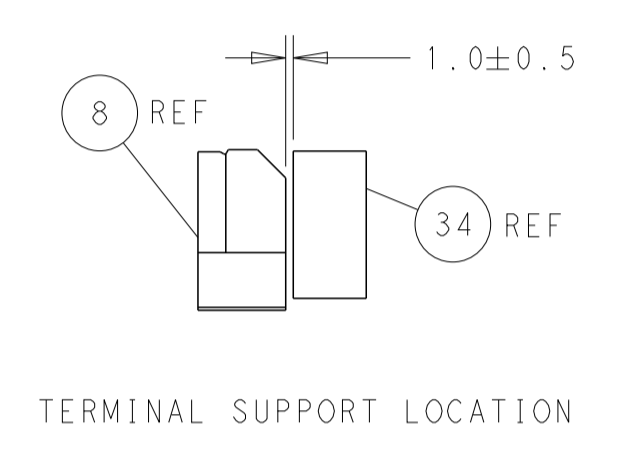
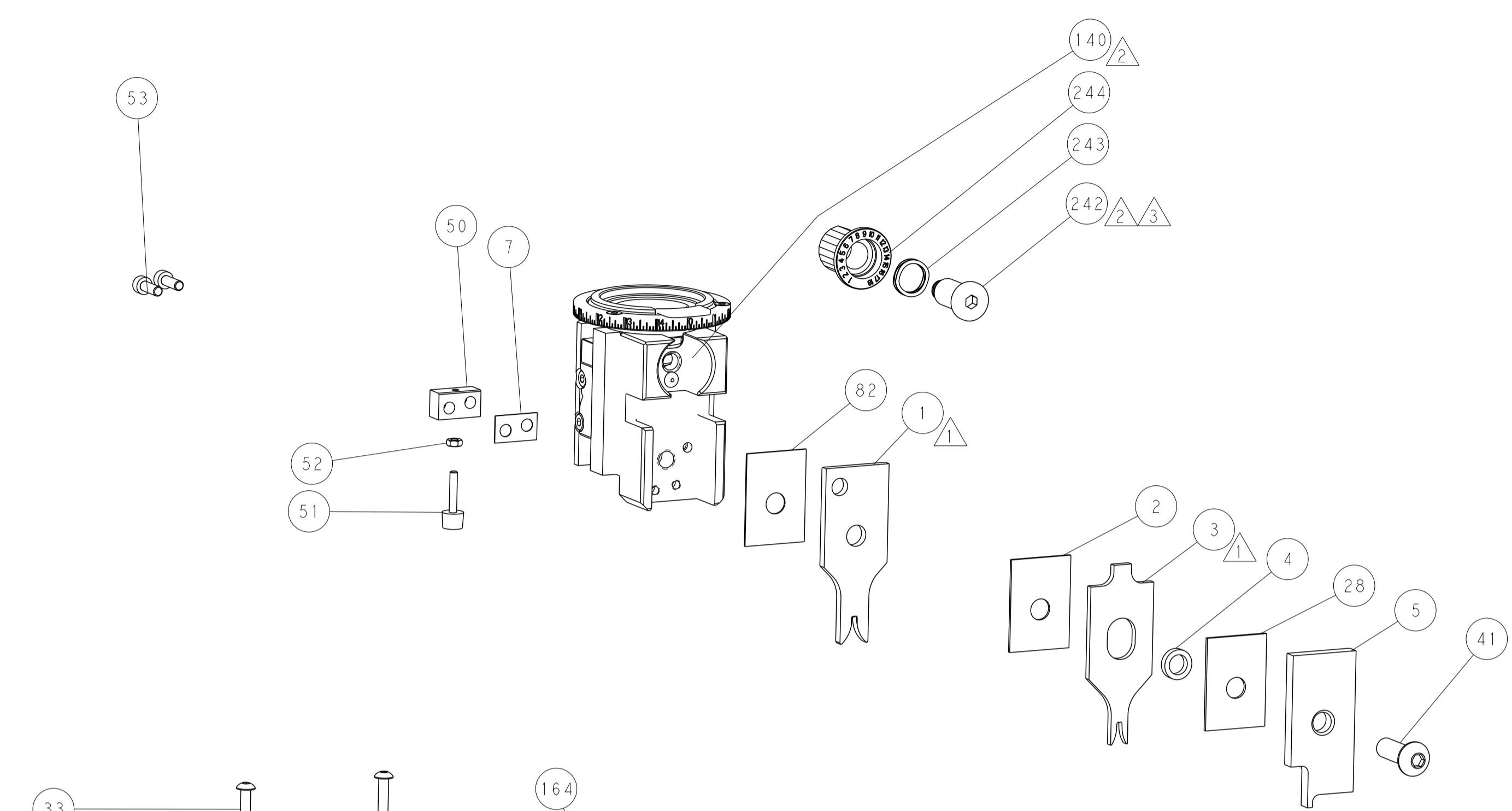
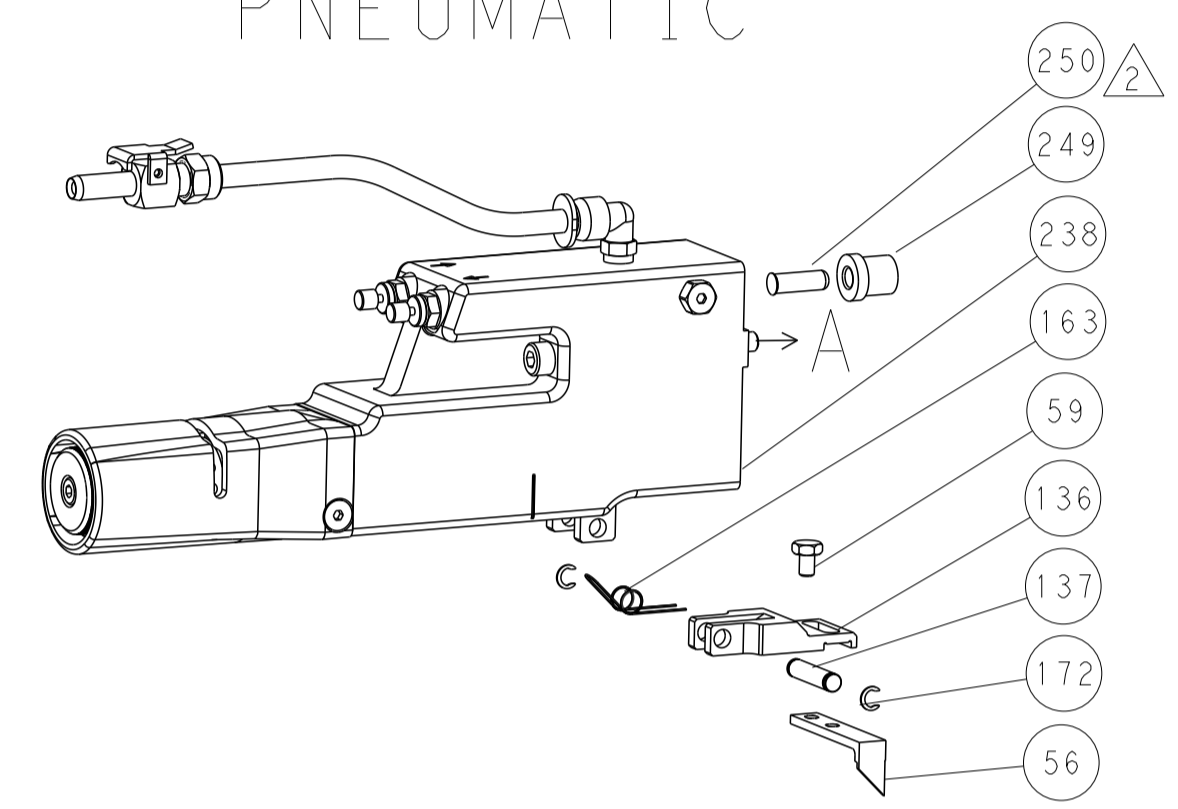
PACIFIC VERSION
 Shown on sheets 3 of 4 & 4 of 4
 (Atlantic version shown on sheets 1 of 4 & 2 of 4)

LOC		DIST		REVISIONS			
A	66	P	LTM	DESCRIPTION	DATE	OWN	APVD
		-		SEE SHEET 1			

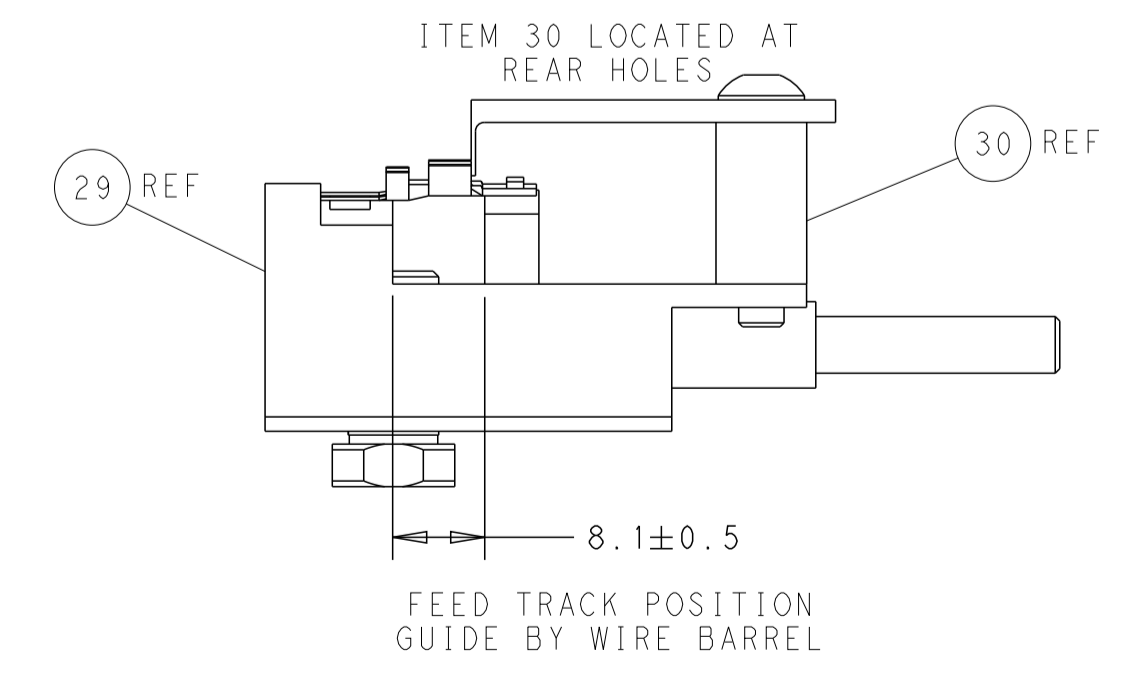
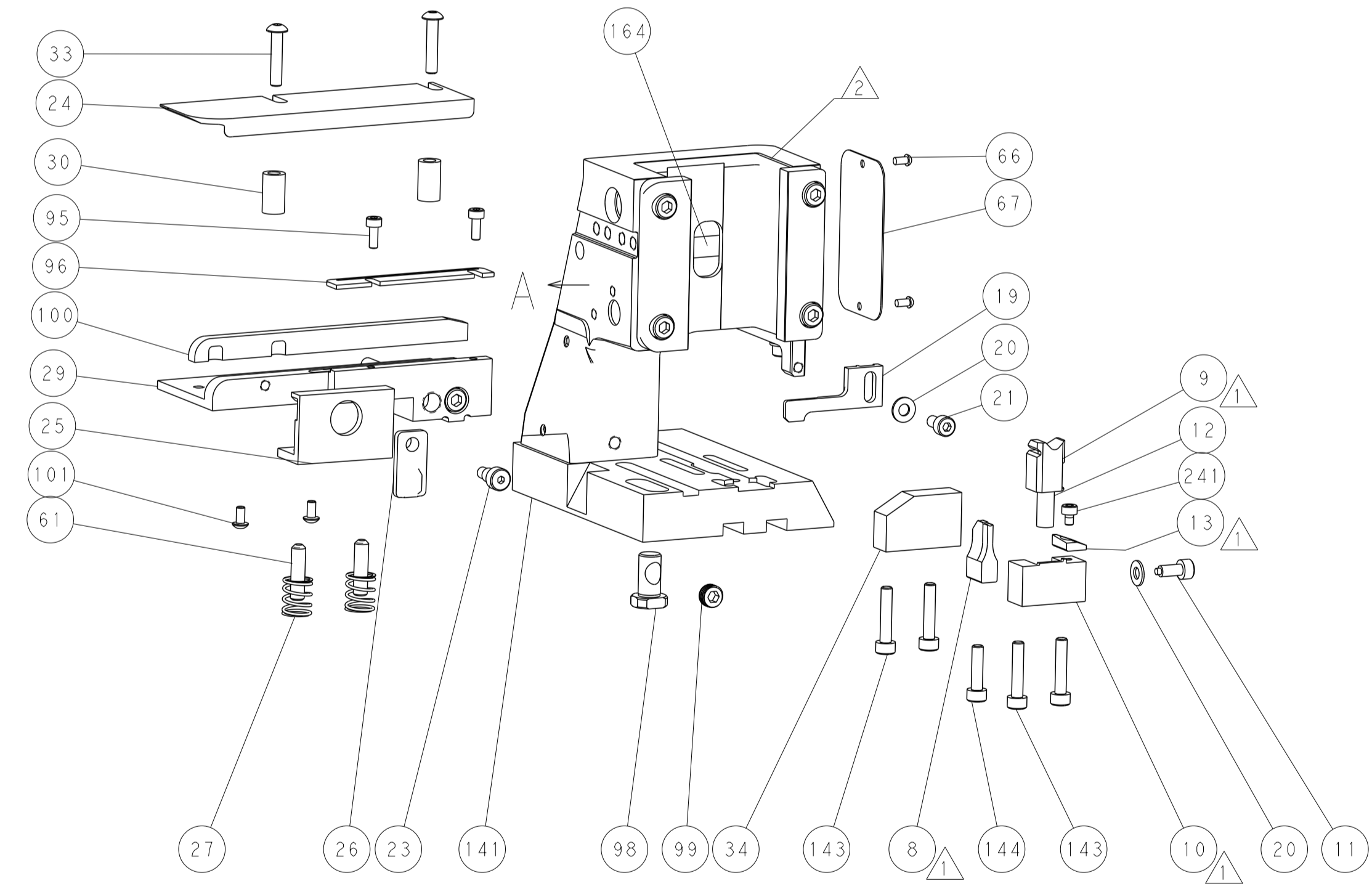
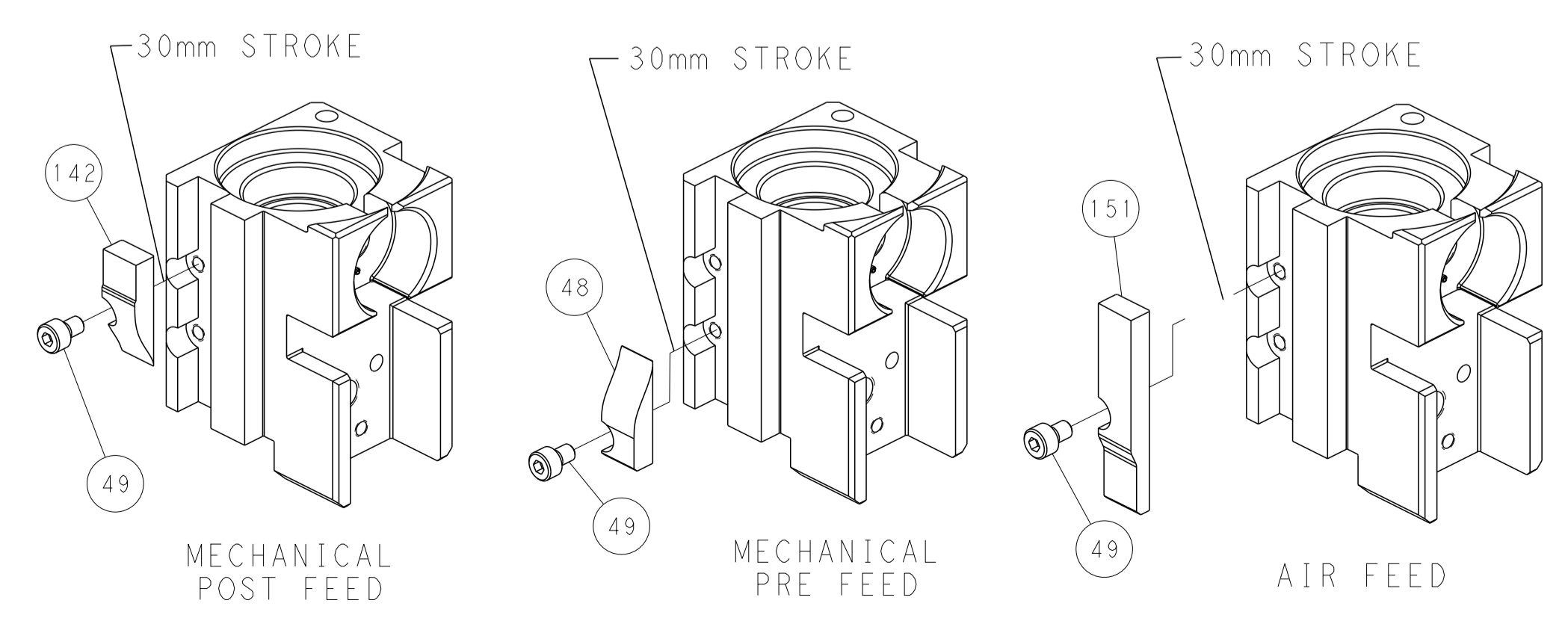
FEED TYPE MECHANICAL



PNEUMATIC



CAM POSITIONS



PACIFIC VERSION
 Shown on sheets 3 of 4 & 4 of 4
 (Atlantic version shown on sheets 1 of 4 & 2 of 4)

<small>THIS DRAWING IS UNPUBLISHED. RELEASED FOR PUBLICATION. IT IS THE PROPERTY OF TYCO ELECTRONICS CORPORATION. IT IS TO BE USED ONLY FOR THE PURPOSES AND IN THE MANNER SPECIFIED BY THE USER. IT IS TO BE RETURNED TO TYCO ELECTRONICS CORPORATION IF IT IS NOT TO BE USED FOR THE PURPOSES AND IN THE MANNER SPECIFIED BY THE USER.</small>		DWN: Y. YIN 06JAN2012 CHK: G. BAILEY 06JAN2012 APVD: S. XI 06JAN2012	TE Connectivity Harrisburg, PA 17105-3608
DIMENSIONS: mm TOLERANCES UNLESS OTHERWISE SPECIFIED: 0 PLC ± 1 PLC ± 2 PLC ± 3 PLC ± 4 PLC ± ANGLES FINISH ±		NAME: Ocean Side Feed Applicator SIZE: A1 CAGE CODE: 00779 DRAWING NO: 2151552	RESTRICTED TO:
MATERIAL:		WEIGHT:	SCALE: 1:2 SHEET: 4 OF 4 REV: C

Mouser Electronics

Authorized Distributor

Click to View Pricing, Inventory, Delivery & Lifecycle Information:

[TE Connectivity:](#)

[2-2151552-1](#)