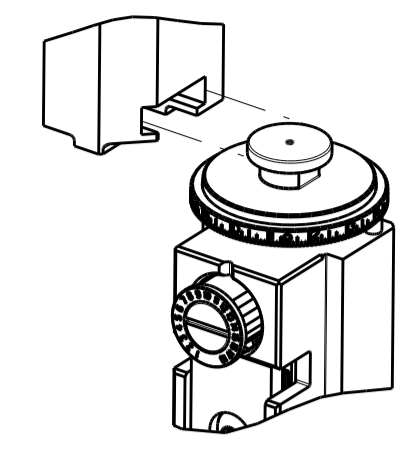
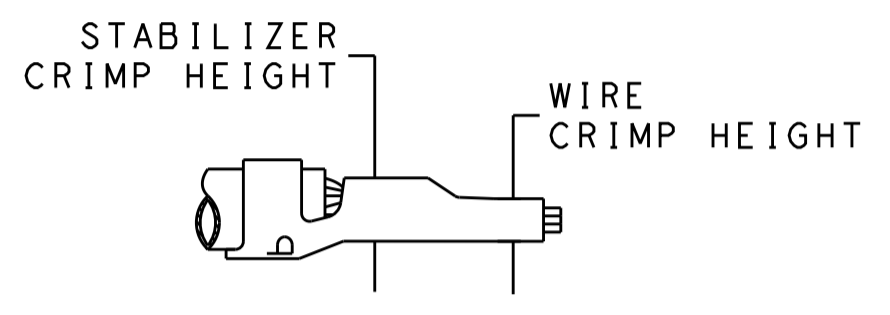


PART NUMBER	REVISION	DESCRIPTION	FEED TYPE
2151209-1	C	FINE CRIMP HEIGHT ADJUST	MECHANICAL
2151209-2	C	FINE CRIMP HEIGHT ADJUST	PNEUMATIC
7-2151209-1	C	MECHANICAL AND CRIMP TOOLING KIT	MECHANICAL
7-2151209-2	C	PNEUMATIC AND CRIMP TOOLING KIT	PNEUMATIC
7-2151209-*	B	SEE CRIMP TOOLING KIT BELOW	-

ATLANTIC VERSION TERMINATOR INTERFACE ADAPTER



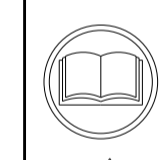
APPLICATOR DATA		
CRIMP	SIZE	TYPE
WIRE	1.57 mm [.062]	F
STABILIZER	1.57 mm [.062]	F
INSULATION	2.79 mm [1.10]	F



TERMINAL DATA: TE TERMINAL		TE CRIMP SPECIFICATION	
TERMINAL NAME: MINI AMP-IN			
WIRE STRIP LENGTH		INSULATION DIAMETER RANGE	
4.45-4.98 mm [1.175-.196 IN]		1.52-2.79 mm [0.060-.110 IN]	
TERMINAL APPLICATION SPECIFICATION	114-1016		
TERMINALS APPLIED			
TE TERMINAL	TE TERMINAL	TE TERMINAL	TE TERMINAL
3-640311-1			

PART NO	REV	WIRE SIZE	WIRE CRIMPER	STABILIZER CRIMPER	INSULATION CRIMPER	ANVIL
7-2151209-7	B	18 AWG	7-1803188-7	1-456403-3	2-2119582-1	1-1633916-4
7-2151209-8	B	22-20 AWG	7-1803188-8	1-456403-3	2-2119582-1	1-1633916-4

WIRE SIZE	CRIMP HEIGHT mm [INCH]	WIRE CRIMPER PART NUMBER	STABILIZER CRIMPER HEIGHT mm [INCH]	STABILIZER CRIMPER PART NUMBER	CRIMP HEIGHT REFERENCE SETTING
18 AWG	0.94+/-0.05 [.037+/-0.002]	7-1803188-7	1.40+/-0.05 [.055+/-0.002]	1-456403-3	5.0
22-20	0.76+/-0.05 [.030+/-0.002]	7-1803188-8			5.0



- RECOMMENDED SPARE PARTS
- REFER TO SUPPLIED INSTRUCTION SHEET FOR CLEANING, LUBRICATION AND STORAGE OF APPLICATOR.
- APPLY PART NUMBER 2-23419-6 LOCTITE TO THREADS OF ITEM 242.
- CRIMP HEIGHT REFERENCE SETTING WAS THE SETTING USED WHEN THE APPLICATOR WAS QUALIFIED AT THE FACTORY. ADJUSTMENT MAY BE NECESSARY WHEN RUNNING APPLICATOR IN THE FIELD.
- 5. UNLESS SPECIFIED OTHERWISE TORQUE VALUES SHALL BE USED PER DOCUMENT, 101-35000.
- ITEM 1 TO BE USED WITH 18 AWG ONLY. ITEM TO BE SHIPPED WITH APPLICATOR.
- ITEM 253 TO BE USED WITH 22-20 AWG ONLY. ITEM TO BE SHIPPED WITH APPLICATOR.
- ITEM 19 MUST BE POSITIONED BETWEEN ITEMS 1 OR 253 AND ITEM 178.
- WHEN RUNNING APPLICATOR IN BENCH MACHINE WIRE MUST BE PLACED IN WIRE BARREL IN ORDER TO ACHIEVE PROPER BRUSH LENGTH.

**\*WARNING**  
ON INSTALLATION, SET WIRE DISC TO CRIMP HEIGHT REFERENCE SETTING FOR LARGEST WIRE SIZE. CRIMP HEIGHT REFERENCE SETTINGS GREATER THAN THE VALUE SHOWN MAY CAUSE DAMAGE TO THE CRIMP TOOLING. REFER TO THE INSTRUCTION SHEET FOR PROPER SETUP AND ADJUSTMENTS.

LOC	DIST	REV	DATE	BY	CHK	APP'D
A	66	A	08JUN2016	RK	GB	
		B	18AUG2016	MZ	JDG	
		C	11OCT2018	FL	TE	

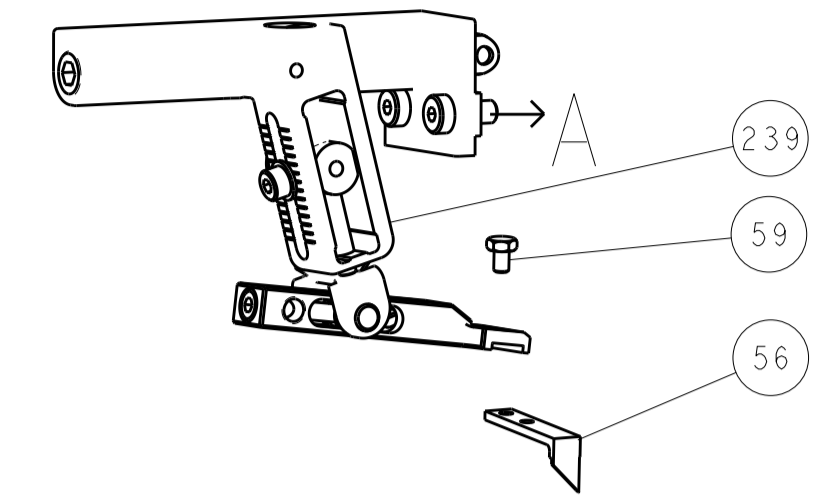
QTY	REV	DESCRIPTION	DATE	BY	CHK	APP'D
1	-	1 1 1 1 1 7-1803188-8				
1	-	1 1 1 1 1 2119640-1				
1	-	1 1 1 1 1 1803259-1				
1	-	1 1 1 1 1 2119641-1				
1	-	1 1 1 1 1 2119082-4				
1	-	1 1 1 1 1 2079764-1				
1	-	1 1 1 1 1 2119083-1				
1	-	1 1 1 1 1 7-18023-7				
1	-	1 1 1 1 1 2119580-1				
1	-	1 1 1 1 1 2063440-1				
1	1	1 2 2 1 1 1-456403-3				
1	-	1 2 2 2 2 21045-3				
1	-	REF REF REF REF 994970-2				
1	-	1 1 1 1 1 240638-1				
1	-	1 1 1 1 1 3-23627-7				
1	-	1 1 1 1 1 2119799-1				
1	-	1 1 1 1 1 455888-8				
1	-	1 1 1 1 1 2844908-1				
1	-	1 1 1 1 1 2844907-1				
1	-	1 1 1 1 1 455888-4				
1	-	1 1 1 1 1 1803607-1				
1	-	1 1 1 1 1 2119740-1				
1	-	2 2 2 2 2 2168078-1				
1	-	1 1 1 1 1 2168083-2				
1	-	1 1 1 1 1 5-18022-5				
1	-	1 1 1 1 1 1338685-1				
1	-	2 2 2 2 2 2168083-3				
1	-	1 2 1 2 1 18023-9				
1	-	1 1 1 1 1 2119652-1				
1	-	1 1 1 1 1 2119653-1				
1	-	1 1 1 1 1 1803583-9				
1	-	1 1 1 1 1 1803515-1				
1	-	1 1 1 1 1 1803602-1				
1	-	2 2 2 2 2 2079383-5				
1	-	2 2 2 2 2 2-2844962-6				
1	-	1 1 1 1 1 2844992-1				
1	-	1 1 1 1 1 455888-3				
1	-	1 1 1 1 1 1320928-2				
1	-	1 1 1 1 1 2168083-2				
1	-	2 2 2 2 2 1-18028-2				
1	-	1 1 1 1 1 2119533-4				
1	-	1 1 1 1 1 2119806-1				
1	-	1 1 1 1 1 3-22280-3				
1	-	1 1 1 1 1 1-356885-4				
1	-	1 1 1 1 1 2119805-1				
1	-	1 1 1 1 1 1803095-1				
1	1	1 2 2 1 1 1-1633916-4				
1	-	- - - - - -				
1	-	- - - - - -				
1	-	1 1 1 1 1 2119757-8				
1	-	1 1 1 1 1 2-238011-2				
1	1	1 2 2 1 1 2-2119582-1				
1	-	- - - - - -				
1	-	1 2 2 1 1 7-1803188-7				

ATLANTIC VERSION  
Shown on sheets 1 of 4 & 2 of 4  
(Pacific version shown on sheets 3 of 4 & 4 of 4)

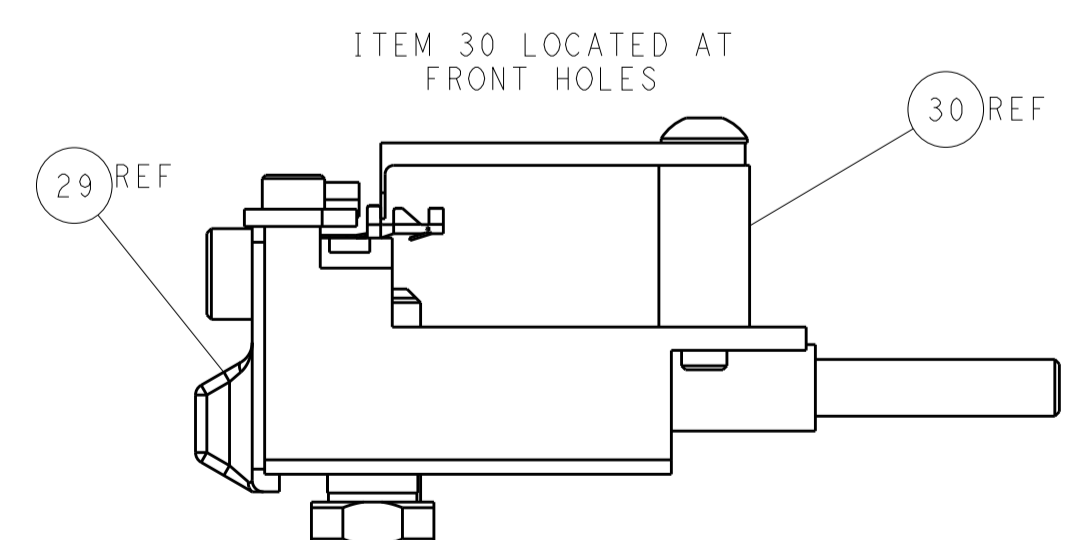
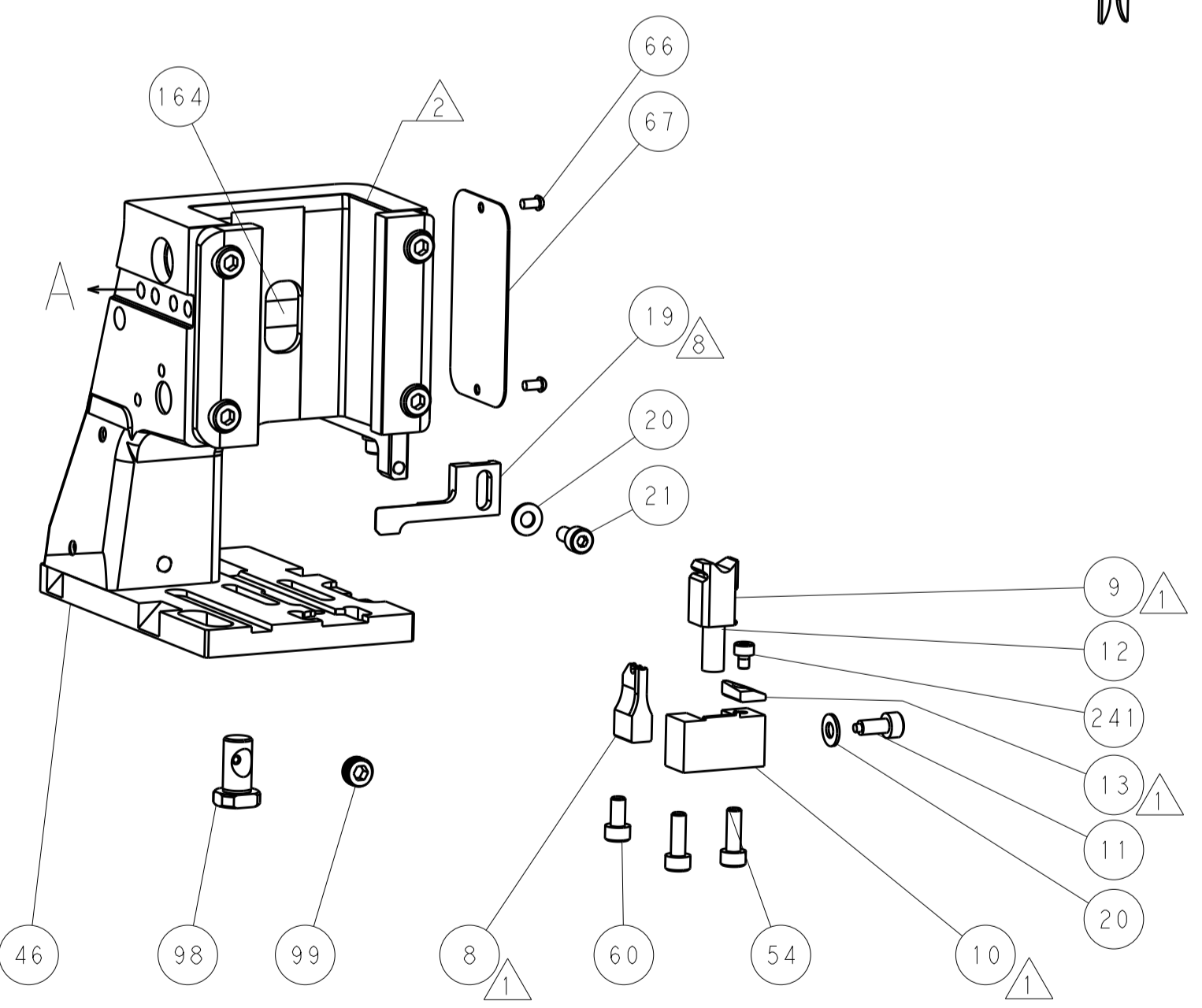
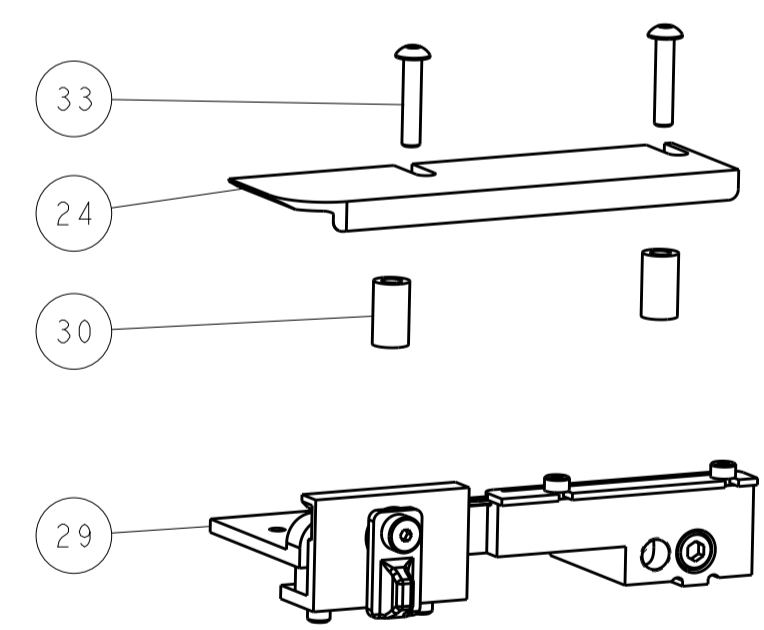
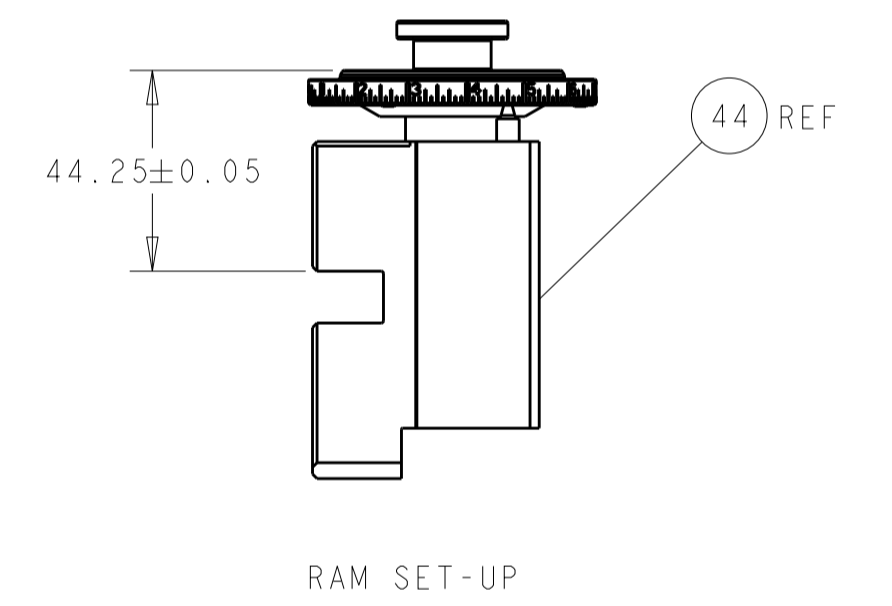
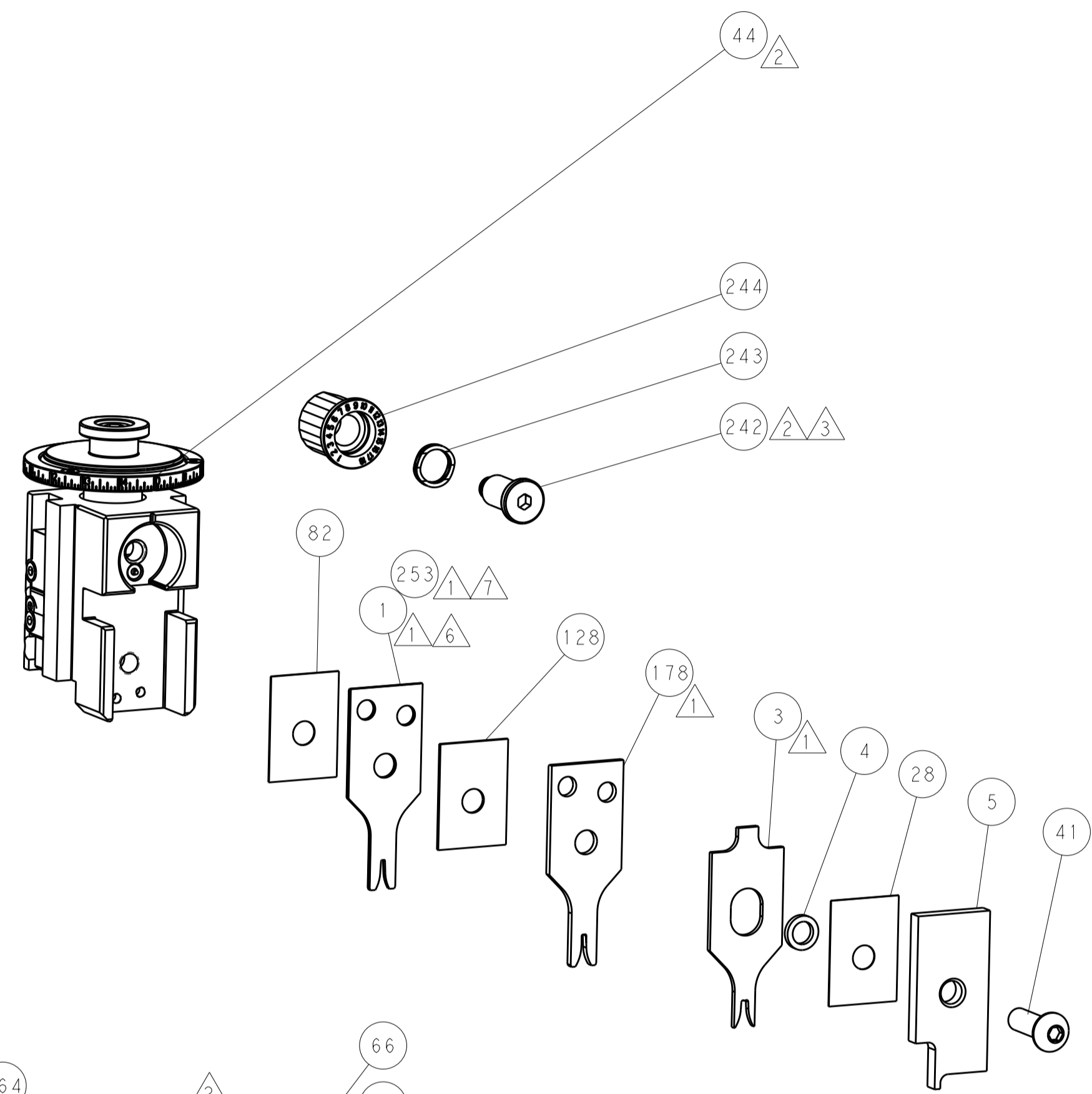
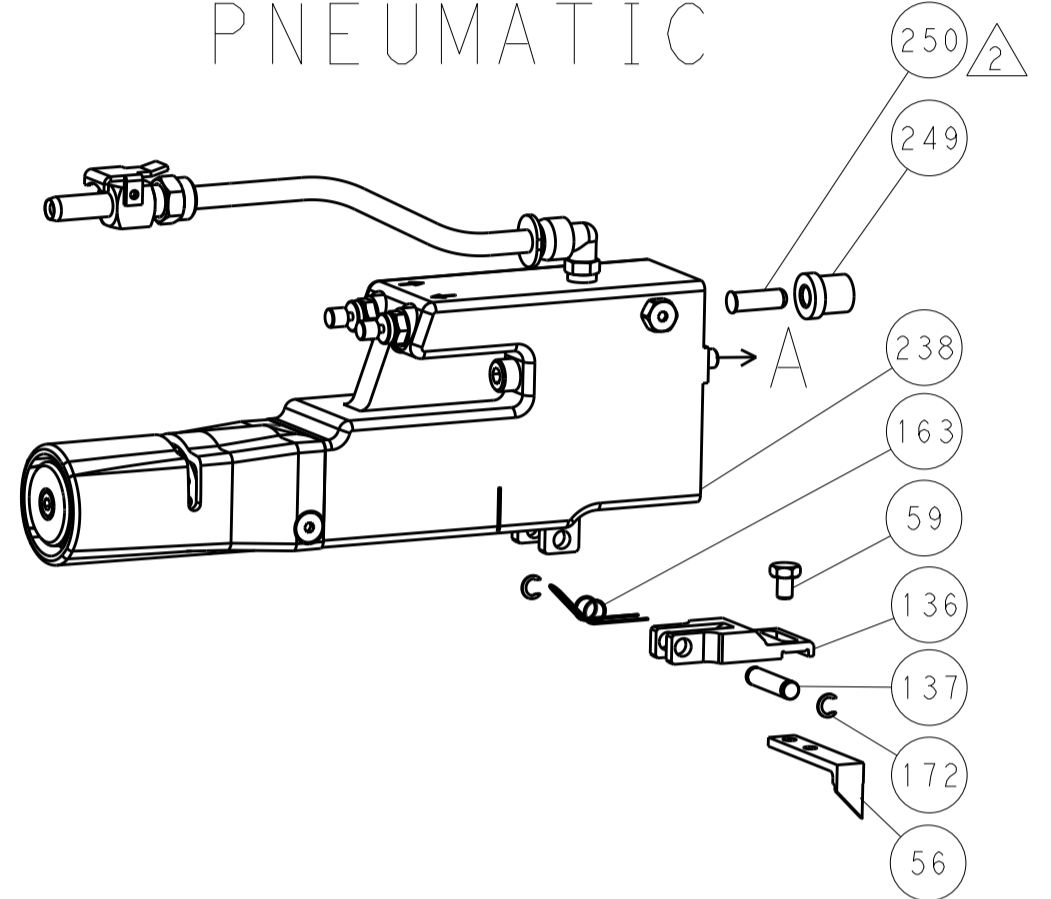
DIMENSIONS: mm		TOLERANCES UNLESS OTHERWISE SPECIFIED:		DWG: M. RILEY 09-JUN-16		CHK: R. KNEPPER 09-JUN-16		APP'D: G. BAILEY 09-JUN-16		NAME: Ocean Side Feed Applicator	
0 PLC ±		1 PLC ±		2 PLC ±		3 PLC ±		4 PLC ±		SIZE: A1	
ANGLES		FINISH		WEIGHT		SCALE: 1:2		SHEET: 1 of 4		REV: C	

LOC		DIST		REVISIONS			
A	66	P	LTM	DESCRIPTION	DATE	OWN	APVD
		-		SEE SHEET 1			

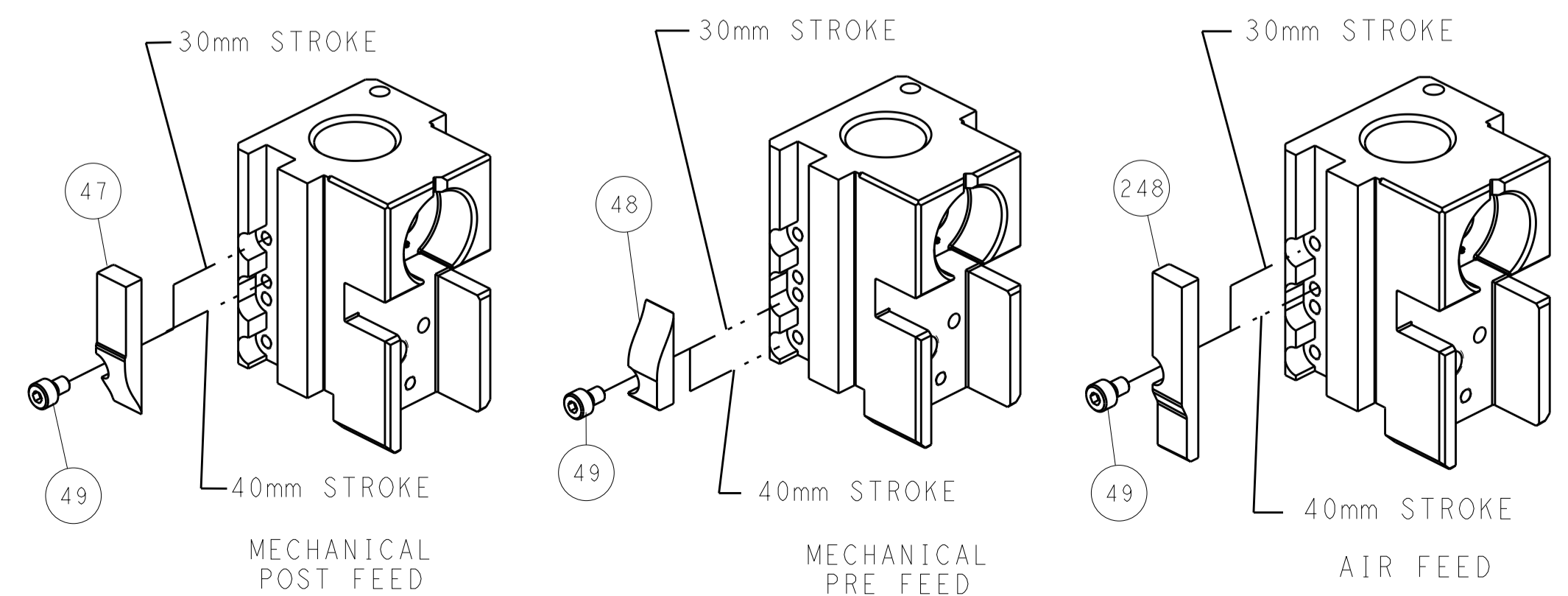
### FEED TYPE MECHANICAL



### PNEUMATIC



### CAM POSITIONS

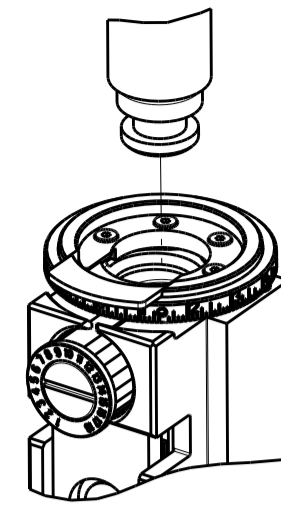


**ATLANTIC VERSION**  
 Shown on sheets 1 of 4 & 2 of 4  
 (Pacific version shown on sheets 3 of 4 & 4 of 4)

DIMENSIONS:		TOLERANCES UNLESS OTHERWISE SPECIFIED:		DWG: M. RILEY 09-JUN-16		TE Connectivity	
mm	0 PLC ±	1 PLC ±	2 PLC ±	3 PLC ±	4 PLC ±	Harrisburg, PA 17105-3608	
MATERIAL:		FINISH:		CHK: R. KNEPPER 09-JUN-16		NAME: Ocean Side Feed Applicator	
				APVD: G. BAILEY 09-JUN-16		SIZE: A1	
				PRODUCT SPEC:		CAGE CODE: 00779	
				APPLICATION SPEC:		DRAWING NO: 2151209	
				WEIGHT:		RESTRICTED TO:	
				Customer Accessible Production Drawing		SCALE: 1:2 SHEET 2 OF 4 REV C	

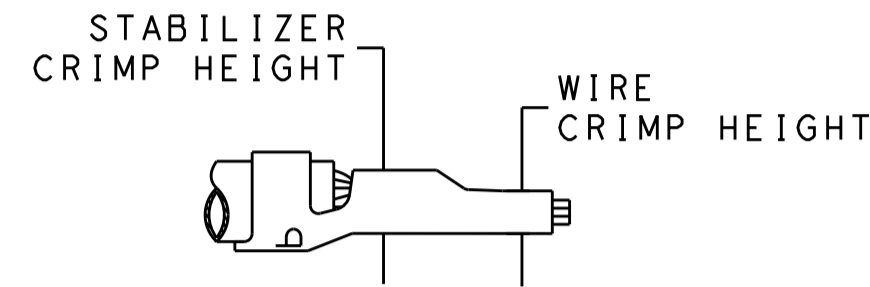
PART NUMBER	REVISION	DESCRIPTION	FEED TYPE
2-2151209-1	C	FINE CRIMP HEIGHT ADJUST	MECHANICAL
2-2151209-2	C	FINE CRIMP HEIGHT ADJUST	PNEUMATIC
7-2151209-*	B	SEE CRIMP TOOLING KIT BELOW	-

PACIFIC VERSION TERMINATOR  
INTERFACE ADAPTER



APPLICATOR DATA		
CRIMP	SIZE	TYPE
WIRE	1.57 mm [.062]	F
STABILIZER	1.57 mm [.062]	F
INSULATION	2.79 mm [.110]	F

APPLICATOR INSTRUCTIONS  
408-35042



TERMINAL DATA: TE TERMINAL		TE CRIMP SPECIFICATION	
TERMINAL NAME: MINI AMP-IN			
WIRE STRIP LENGTH		INSULATION DIAMETER RANGE	
4.45-4.98 mm [1.175-.196 IN]		1.52-2.79 mm [1.060-.110 IN]	
TERMINAL APPLICATION SPECIFICATION		114-1016	
TERMINALS APPLIED			
TE TERMINAL	TE TERMINAL	TE TERMINAL	TE TERMINAL
3-640311-1			

PART NO	REV	WIRE SIZE	WIRE CRIMPER	STABILIZER CRIMPER	INSULATION CRIMPER	ANVIL
7-2151209-7	B	18 AWG	7-1803188-7	1-456403-3	2-2119582-1	1-1633916-4
7-2151209-8	B	22-20 AWG	7-1803188-8	1-456403-3	2-2119582-1	1-1633916-4

WIRE SIZE	CRIMP HEIGHT mm [INCH]	WIRE CRIMPER PART NUMBER	STABILIZER CRIMPER PART NUMBER	STABILIZER CRIMP HEIGHT mm [INCH]	CRIMP HEIGHT REFERENCE SETTING
18 AWG	0.94+/-0.05 [1.037+/-0.02]	7-1803188-7	1-456403-3	1.40+/-0.05 [1.055+/-0.02]	5.0
22-20	0.76+/-0.05 [1.030+/-0.02]	7-1803188-8			5.0

- 1 RECOMMENDED SPARE PARTS
- 2 REFER TO SUPPLIED INSTRUCTION SHEET FOR CLEANING, LUBRICATION AND STORAGE OF APPLICATOR.
- 3 APPLY PART NUMBER 2-23419-6 LOCTITE TO THREADS OF ITEM 242.
- 4 CRIMP HEIGHT REFERENCE SETTING WAS THE SETTING USED WHEN THE APPLICATOR WAS QUALIFIED AT THE FACTORY. ADJUSTMENT MAY BE NECESSARY WHEN RUNNING APPLICATOR IN THE FIELD.
- 5. UNLESS SPECIFIED OTHERWISE TORQUE VALUES SHALL BE USED PER DOCUMENT, 101-35000.
- 6 ITEM 1 TO BE USED WITH 18 AWG ONLY. ITEM TO BE SHIPPED WITH APPLICATOR.
- 7 ITEM 253 TO BE USED WITH 22-20 AWG ONLY. ITEM TO BE SHIPPED WITH APPLICATOR.
- 8 ITEM 19 MUST BE POSITIONED BETWEEN ITEMS 1 OR 253 AND ITEM 178.
- 9 WHEN RUNNING APPLICATOR IN BENCH MACHINE WIRE MUST BE PLACED IN WIRE BARREL IN ORDER TO ACHIEVE PROPER BRUSH LENGTH.

**\*WARNING**  
ON INSTALLATION, SET WIRE DISC TO CRIMP HEIGHT REFERENCE SETTING FOR LARGEST WIRE SIZE. CRIMP HEIGHT REFERENCE SETTINGS GREATER THAN THE VALUE SHOWN MAY CAUSE DAMAGE TO THE CRIMP TOOLING, REFER TO THE INSTRUCTION SHEET FOR PROPER SETUP AND ADJUSTMENTS.

PACIFIC VERSION  
Shown on sheets 3 of 4 & 4 of 4  
(Atlantic version shown on sheets 1 of 4 & 2 of 4)

LOC	DIST	REV	DATE	BY	APPD
A	66				

REVISIONS						
REV	DATE	DESCRIPTION	DATE	BY	APPD	ITEM NO
-	-	SEE SHEET 1	-	-	-	-
1	-	1	1	7-1803188-8	CRIMPER, WIRE	253
-	-	1	-	2119640-1	PUSH ROD, AIR FEED	250
-	-	1	-	1803259-1	BUSHING, FLANGED	249
-	-	1	1	2119082-4	CAM, SNAIL, INSULATION ADJUSTMENT	244
-	-	1	1	2079764-1	WASHER, WAVE SPRING, CREST-TO-CREST	243
3	-	1	1	2119083-1	RETAINER, INSULATION DIAL	242
-	-	1	1	7-18023-7	SCR, SKT HD CAP M3 X 4.0	241
-	-	-	1	2119580-1	MECHANICAL FEED ASSEMBLY	239
-	-	1	-	2063440-1	AIR FEED MODULE	238
1	1	1	1	1-456403-3	CRIMPER, WIRE PREMIUM	178
-	-	2	-	21045-3	RING, RETAIN, EXTERN, 3/16 CRESCENT	172
-	-	REF	REF	994970-2	COUNTER, MAGNETIC	164
-	-	1	-	240638-1	SPRING, FEED FINGER	163
-	-	1	-	2119641-2	FEED CAM, AIR FEED	151
-	-	1	1	2168083-8	SCR, SKT HD CAP, RoHS, M4 X 16	144
-	-	2	2	2168083-9	SCR, SKT HD CAP, RoHS, M4 X 20	143
-	-	-	1	2119653-2	FEED CAM, POST FEED	142
-	-	1	1	1-1803583-0	APPLICATOR BASIC ASSEMBLY, SF	141
-	-	1	1	1803516-1	RAM ASSEMBLY, SF PACIFIC	140
-	-	1	-	3-23627-7	PIN, RETAIN, GRVD, 3/16 X .854	137
-	-	1	-	2119799-1	HOLDER, FEED FINGER, AF	136
-	-	1	1	455888-8	SPACER, CRIMPER	128
-	-	1	1	2844908-1	SCREW, LOCKING	99
-	-	1	1	2844907-1	POST, LOCKING	98
-	-	1	1	455888-4	SPACER, CRIMPER	82
-	-	1	1	1803607-1	DOCUMENTATION PACKAGE	71
-	-	1	1	2119740-1	TAG, IDENTIFICATION	67
-	-	2	2	2168078-1	SCREW, DRIVE, RH, RoHS, 2 x .188	66
-	-	1	1	5-18022-5	SCR, HEX HD CAP, M4 X 6.0	59
-	-	1	1	1338685-1	PAWL, FEED	56
-	-	1	2	18023-9	SCR, SKT HD CAP M4 X 6.0	49
-	-	-	1	2119652-1	FEED CAM, PRE FEED	48
-	-	1	1	1803602-1	SCR, BHSC, RoHS (M8 X 25)	41
-	-	2	2	2079383-5	SCR, BHSC, RoHS (M4 X 20)	33
-	-	2	2	2-2844962-6	SPACER, CYLINDRICAL, STRIP GUIDE	30
-	-	1	1	2844992-1	ASSEMBLY, STRIP GUIDE	29
-	-	1	1	455888-3	SPACER, CRIMPER	28
-	-	1	1	1320928-2	STRIP GUIDE	24
-	-	1	1	2168083-2	SCR, SKT HD CAP, RoHS, M4 X 8.0	21
-	-	2	2	1-18028-2	WASHER, FLAT, REG M4	20
8	-	1	1	2119533-4	STRIPPER, SIDE FEED	19
1	-	1	1	2119806-1	INSERT, SHEAR	13
-	-	1	1	3-22280-3	SPRING, COMPRESSION	12
-	-	1	1	1-356885-4	STOP, SHEAR	11
1	-	1	1	2119805-1	SHEAR HOLDER, FRONT	10
-	-	1	1	1803095-1	FLOATING SHEAR, FRONT	9
1	1	1	1	1-1633916-4	ANVIL, COMBINATION	8
-	-	-	-	-	-	7
-	-	-	-	-	-	6
-	-	1	1	2119757-8	DEPRESSOR, SHEAR	5
-	-	1	1	2-238011-2	BLOCK, CRIMPER SPACER	4
1	1	1	1	2-2119582-1	CRIMPER, INSULATION F PREMIUM	3
-	-	-	-	-	-	2
6	1	1	1	7-1803188-7	CRIMPER, WIRE	1

DIMENSIONS:		TOLERANCES UNLESS OTHERWISE SPECIFIED:		MATERIAL:		FINISH:	
mm	0 PLC ±	1 PLC ±	2 PLC ±	3 PLC ±	4 PLC ±	ANGLES ±	FINISH ±

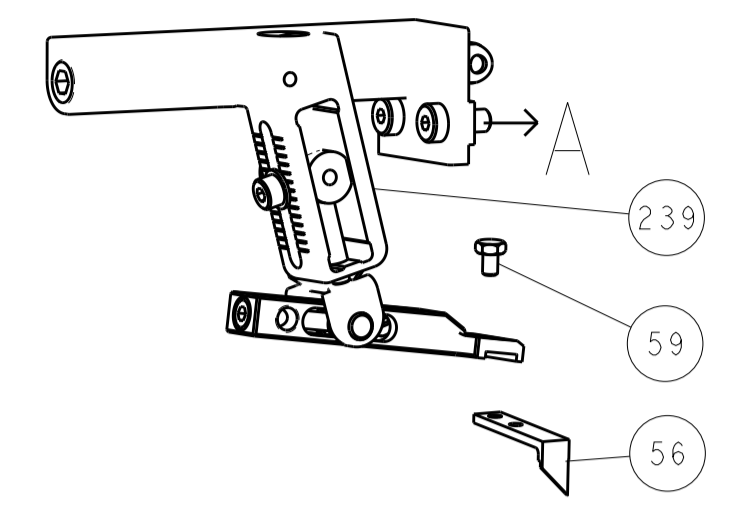
CHK	DATE	NAME	DESCRIPTION	ITEM NO
M. RILEY	09-JUN-16			
R. KNEPPER	09-JUN-16			
G. BAILEY	09-JUN-16			

SIZE	CAGE CODE	DRAWING NO	RESTRICTED TO
A1	00779	2151209	

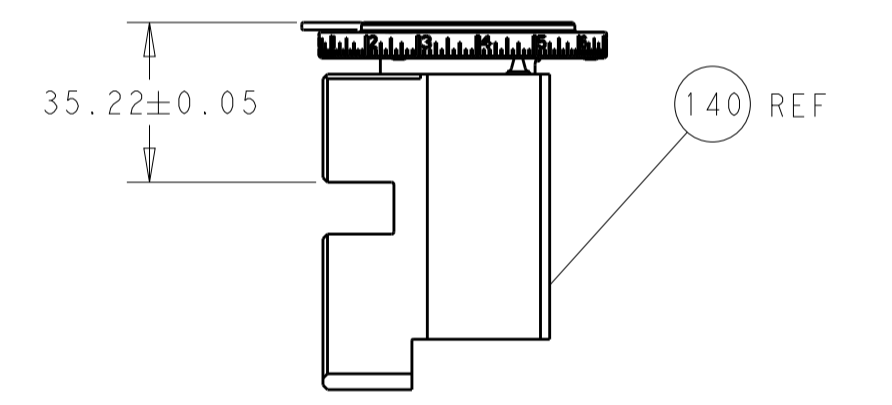
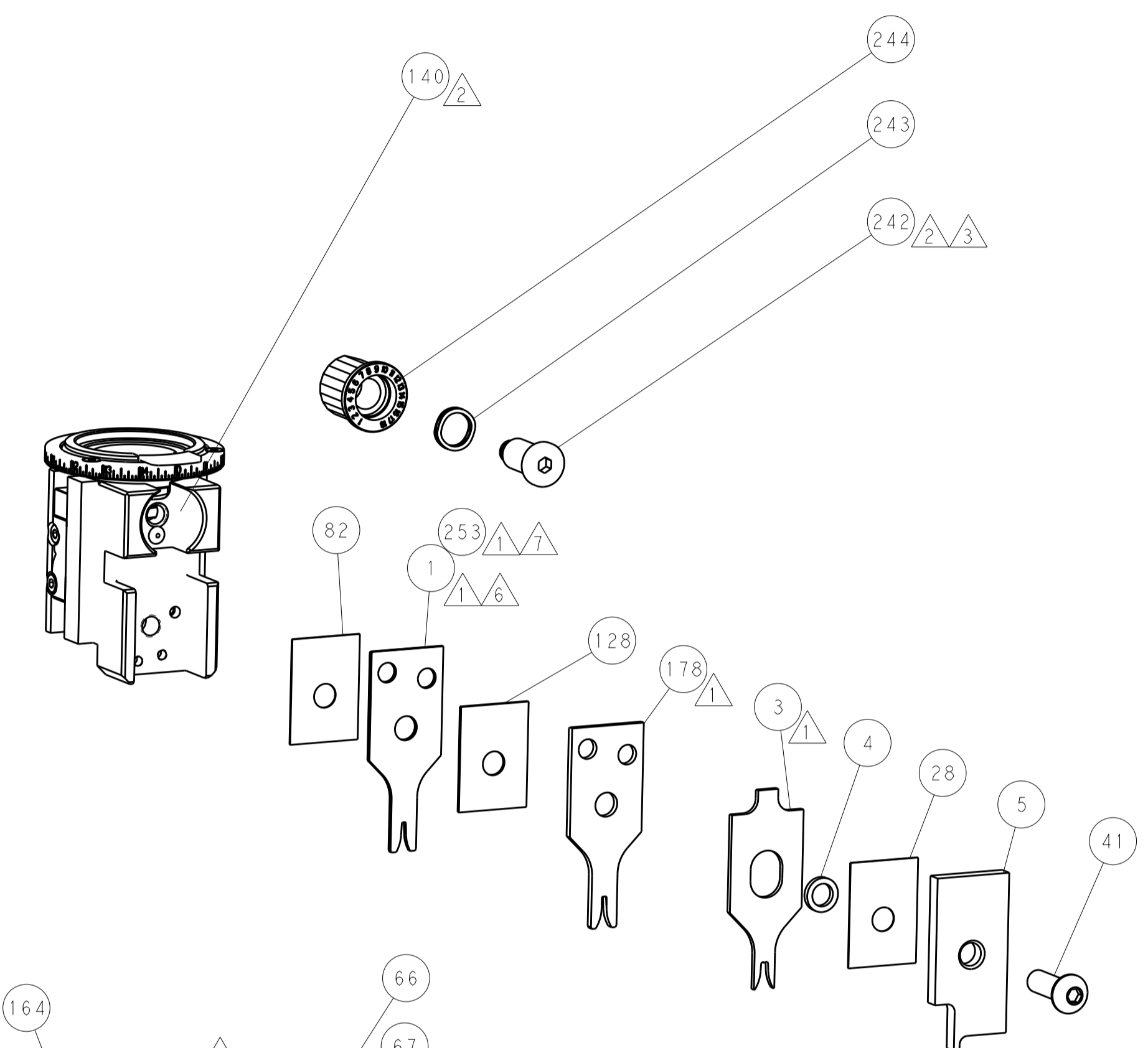
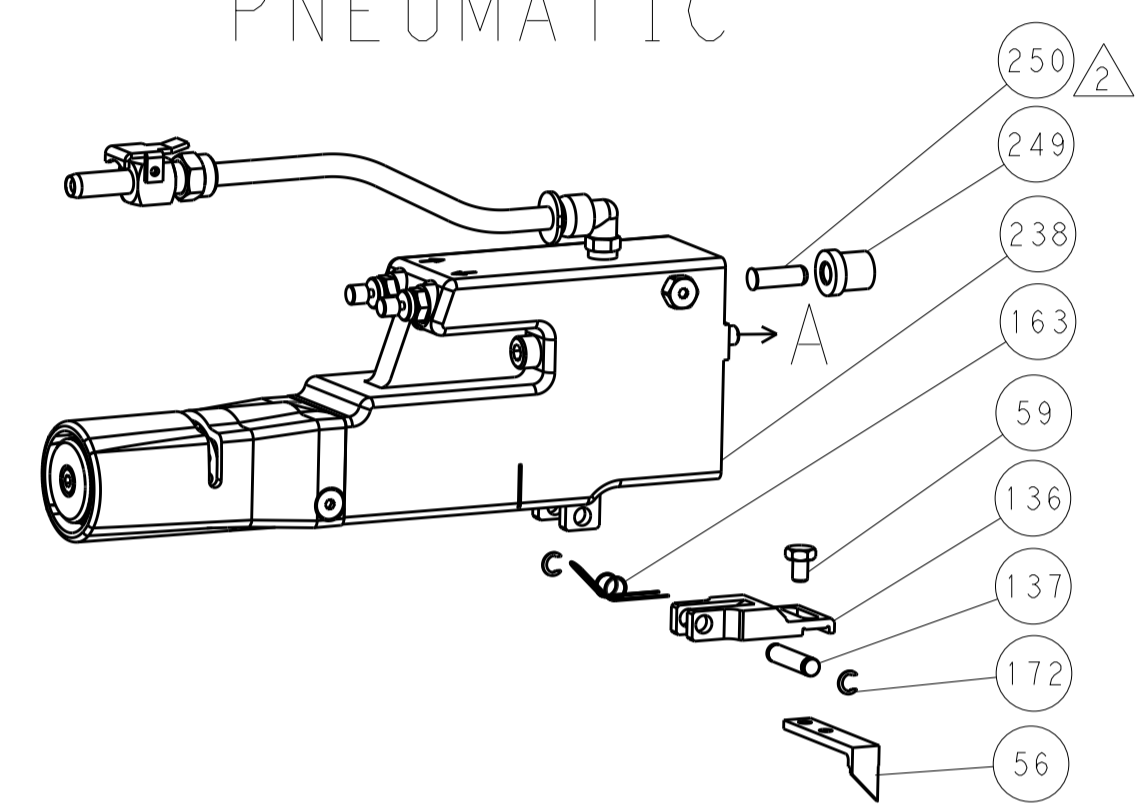
Customer Accessible Production Drawing SCALE 1:2 SHEET 3 OF 4 REV C

LOC		DIST		REVISIONS			
A	66	P	LTM	DESCRIPTION	DATE	DMN	APVD
		-		SEE SHEET 1			

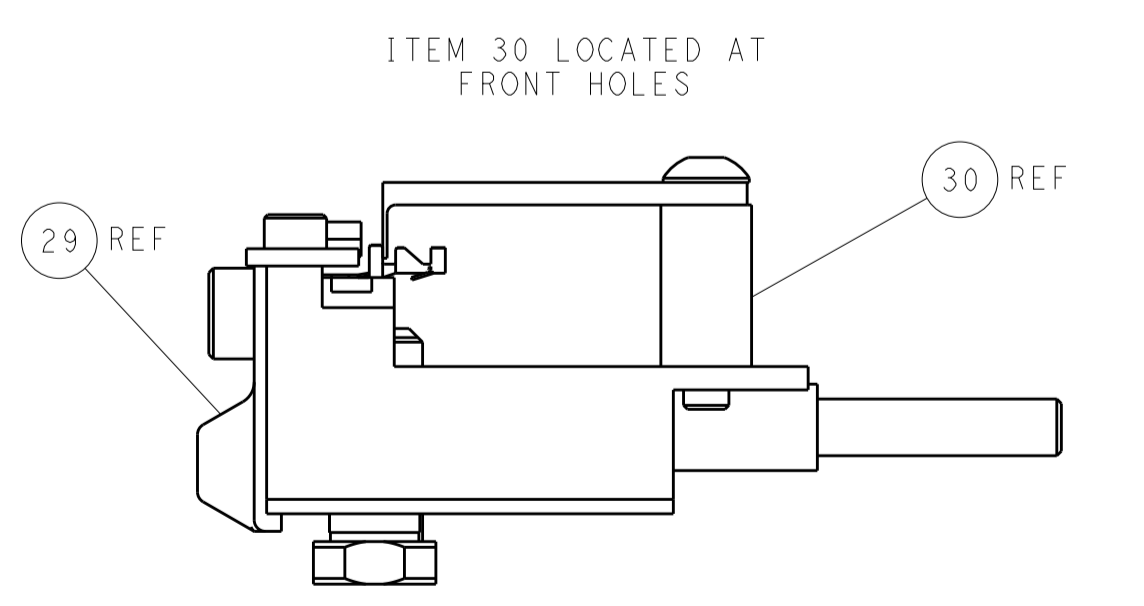
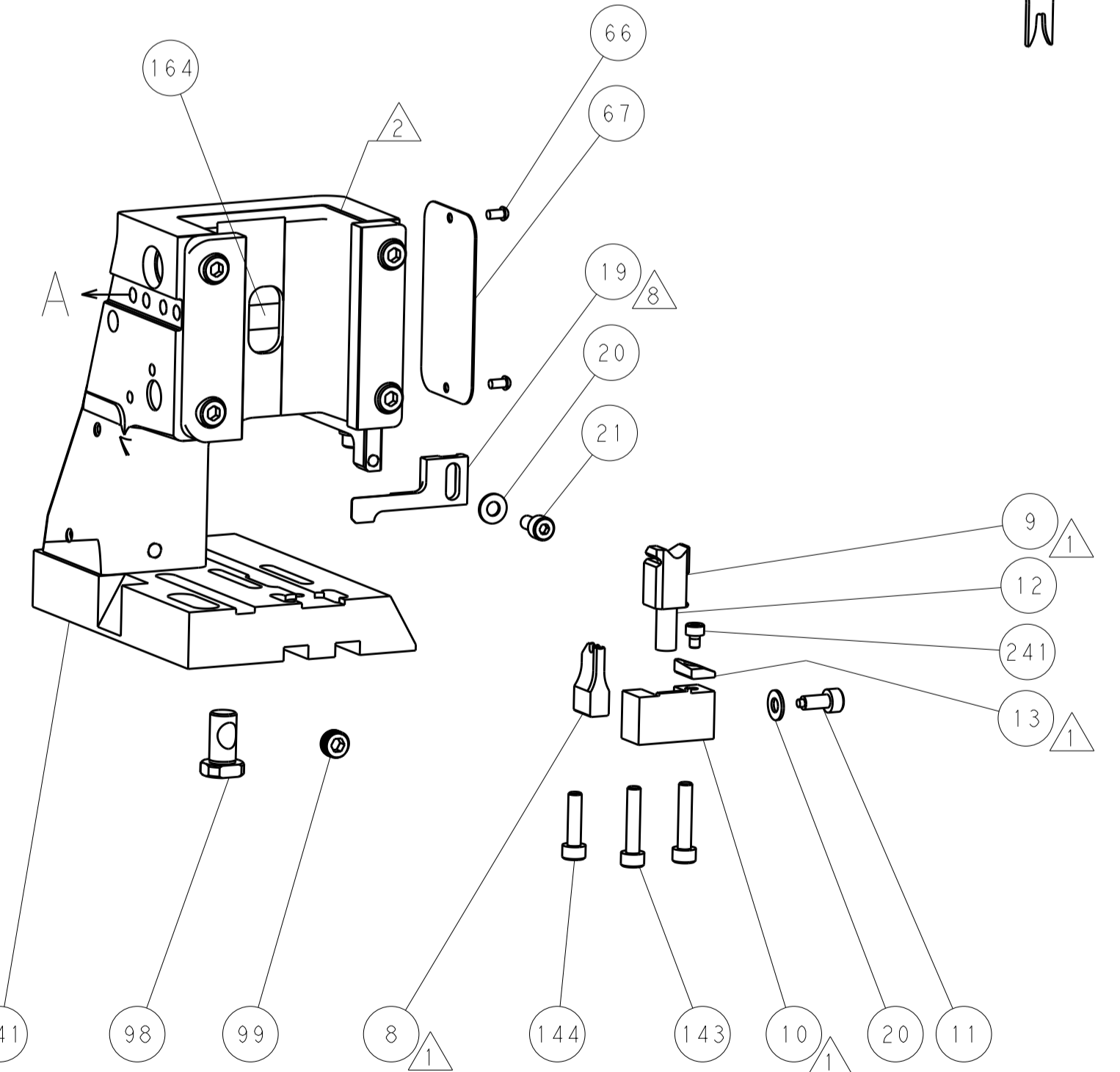
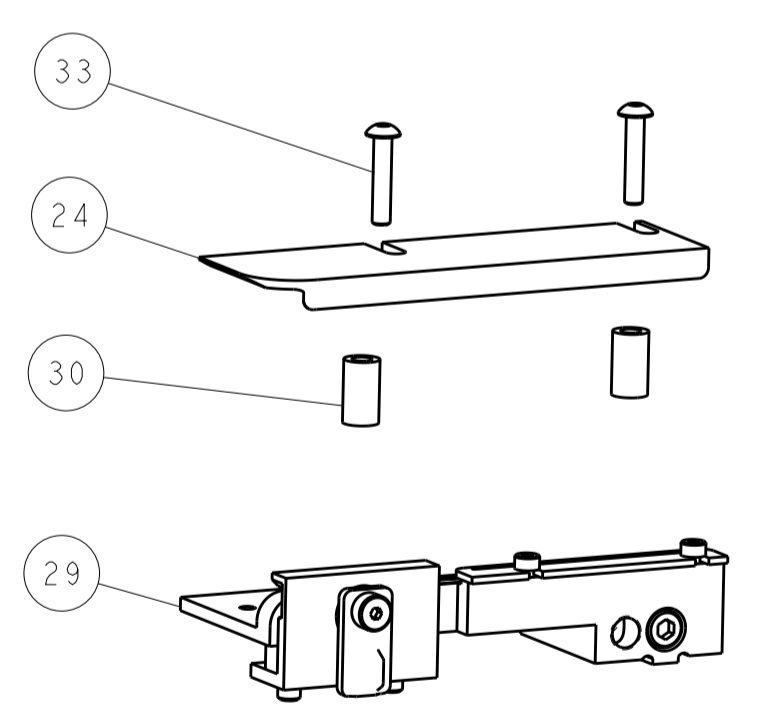
# FEED TYPE MECHANICAL



# PNEUMATIC

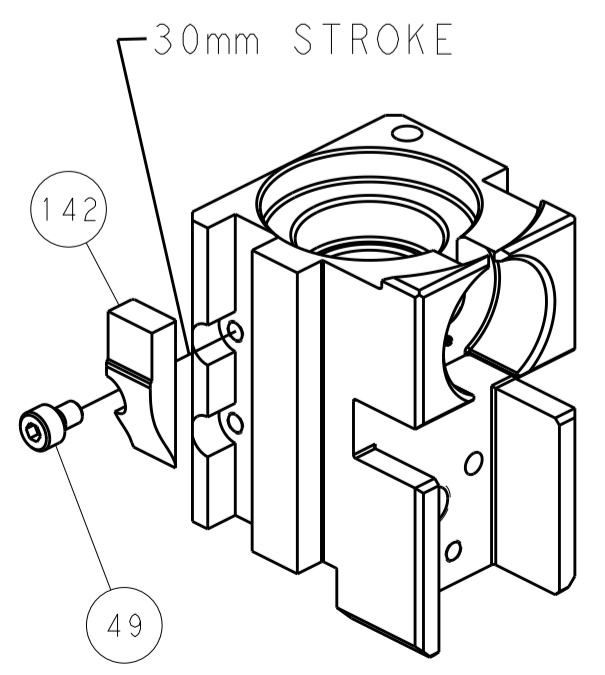


RAM SET-UP

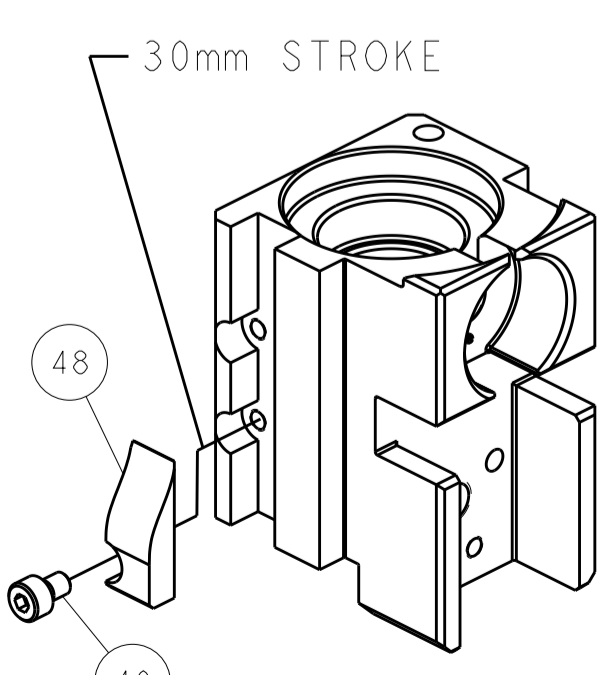


FEED TRACK POSITION  
GUIDE BY INSULATION BARREL

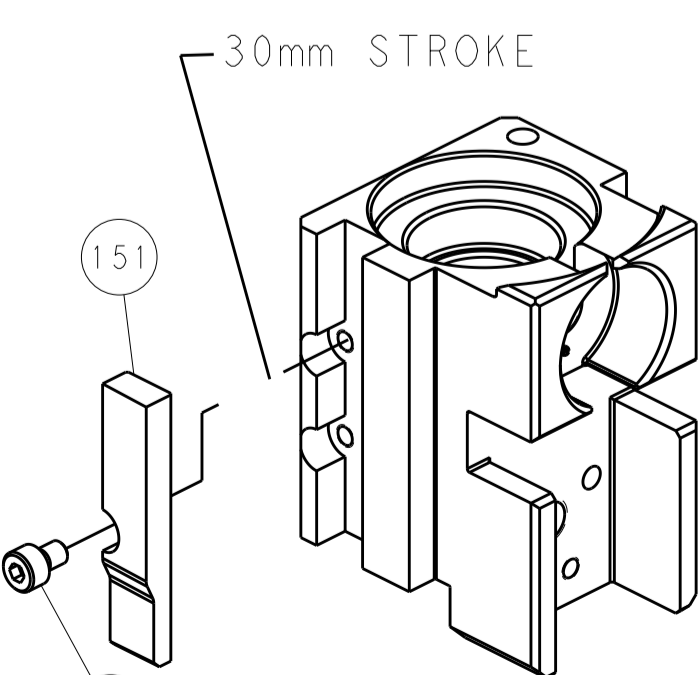
# CAM POSITIONS



MECHANICAL  
POST FEED



MECHANICAL  
PRE FEED



AIR FEED

**PACIFIC VERSION**  
 Shown on sheets 3 of 4 & 4 of 4  
 (Atlantic version shown on sheets 1 of 4 & 2 of 4)

DIMENSIONS:		TOLERANCES UNLESS OTHERWISE SPECIFIED:		DWG: M. RILEY 09-JUN-16		STE TE Connectivity	
mm	0 PLC ±	1 PLC ±	2 PLC ±	3 PLC ±	4 PLC ±	5 PLC ±	Harrisburg, PA 17105-3608
	ANGLES	FINISH		CHK: R. KNEPPER 09-JUN-16		NAME: Ocean Side Feed Applicator	
MATERIAL:				APVD: G. BAILEY 09-JUN-16		PRODUCT SPEC	
				APPLICATION SPEC		SIZE: CAGE CODE: DRAWING NO:	
				WEIGHT:		RESTRICTED TO:	
				SCALE: 1:2		SHEET 4 OF 4 REV C	
Customer Accessible Production Drawing				A1 00779 ©=2151209			

# Mouser Electronics

Authorized Distributor

Click to View Pricing, Inventory, Delivery & Lifecycle Information:

[TE Connectivity:](#)

[7-2151209-1](#)