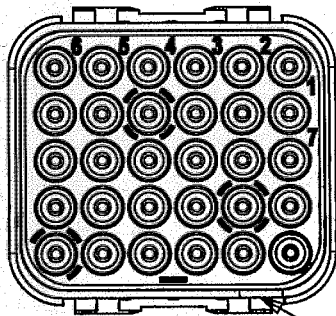


Dimensions externes suivant EN4165-003  
External dimensions according to EN4165-003

DMC-MR 30-23 AX

EX



X: Codage A,B,C,D,E,F,G,H ou N  
X: Keying A,B,C,D,E,F,G,H, or N  
(1)

**CARACTERISTIQUES:**

Température d'utilisation: -55°C à +175°C

Matériaux: Thermoplastique, silicone fluoré violet

Masse: 3,4g Maxi

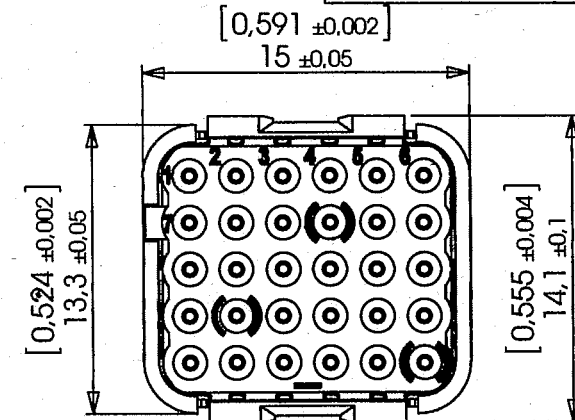
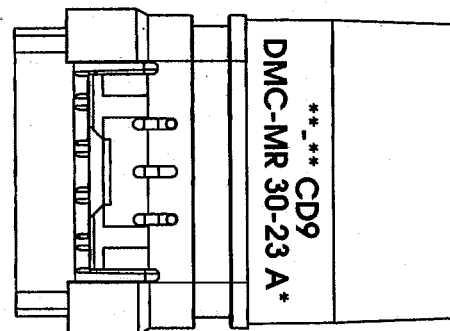
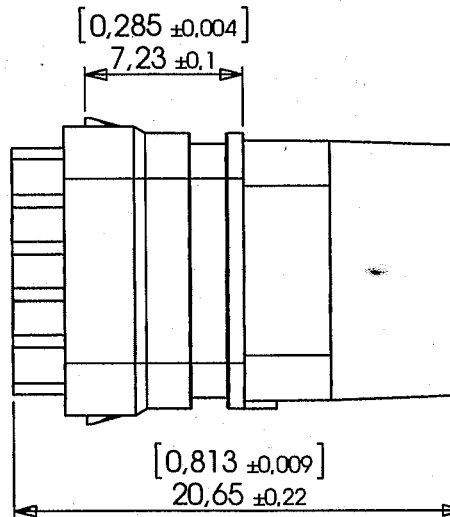
Dimensions: Millimètres (pouces)

Contacts:

- Mâle #23 câble cuivre - 182-4043-23

Outil insertion/extraction contacts:

-M81969/14-01

**CHARACTERISTICS:**

Operating temperature range: -55°C to +175°C

Materials: Thermoplastic and purple fluorosilicone

Weight: 3,4g Maxi

Dimensions: Millimeters [inches]


Contacts:

- Pin #23 for copper cable - 182-4043-23

Contacts insertion/extraction tool:

-M81969/14-01

Module livré sans contact mâle / Module delivered without pin contact

b	27/04/15	OE230415	SERIE DMC-M	DATE 04/03/2013	VISA Creation <i>Created</i>	VISA Approbation <i>Approval</i>		
a	24/12/14	UPDATE						
Revision	Date	Observations	DESIGNATION <b>Module femelle pour contact mâle #23</b> <i>Socket module for #23 pin contact</i>	REF : P/N:	<b>DMC-MR 30-23 AX</b> <b>(1)</b>		-	-
ORIGINE : ORIGIN :		DE156/13					VERSION	
			<b>Connecteurs Electriques Deutsch</b> 17, rue LAVOISIER - BP 117 - 27091 EVREUX CEDEX 09 - FRANCE			<b>FICHE TECHNIQUE</b> <b>TECHNICAL DATA SHEET</b>		
						204-19-C/01		

# Mouser Electronics

Authorized Distributor

Click to View Pricing, Inventory, Delivery & Lifecycle Information:

[TE Connectivity:](#)

[ZPF000000000203398](#)