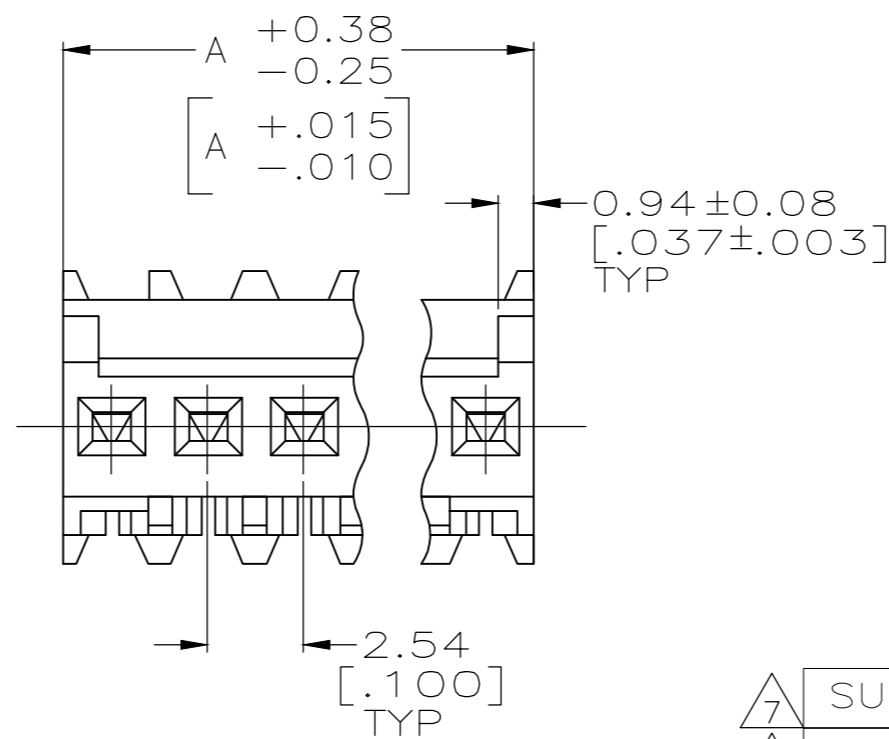
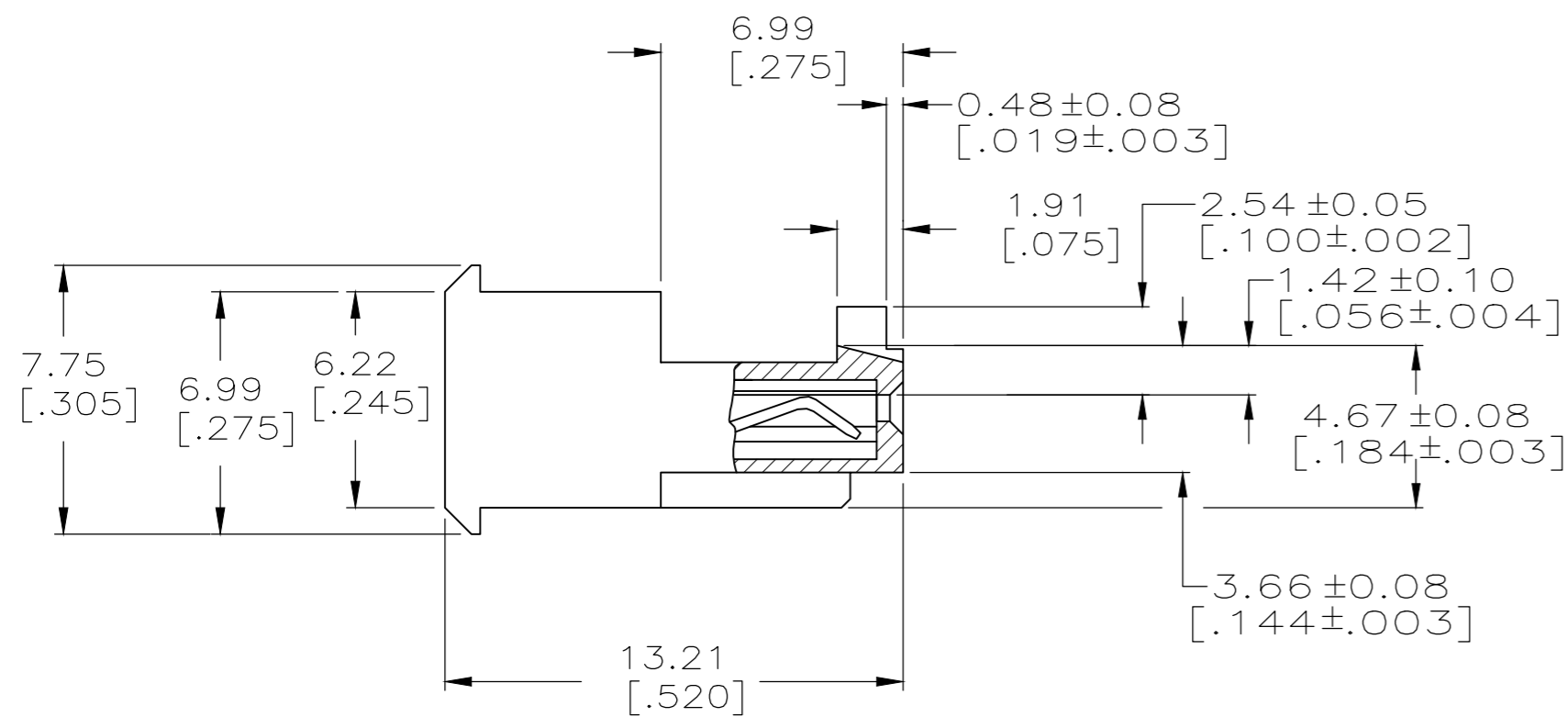
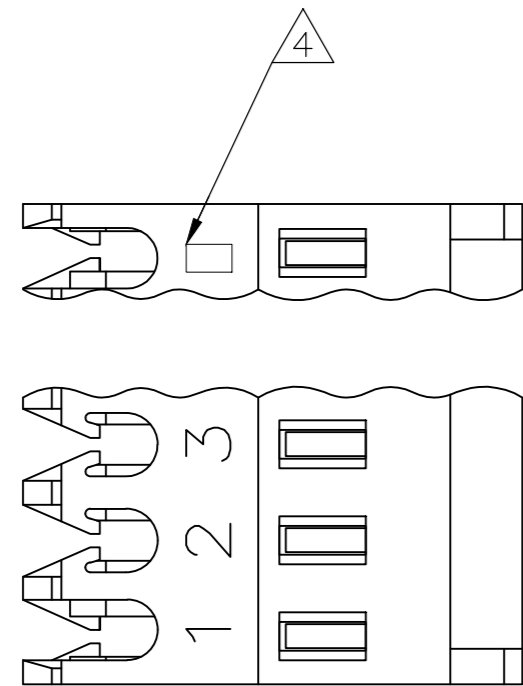


THIS DRAWING IS UNPUBLISHED. RELEASED FOR PUBLICATION  
 © COPYRIGHT - By - ALL RIGHTS RESERVED.

LOC	DIST	REVISIONS					
		P	LTR	DESCRIPTION	DATE	DWN	APVD
CM	00	B3		REVISED PER ECR-17-013148	29MAY2018	BDA	SG



LEAD	LEAD		
	DIM A	NO. OF POSN	ASSEMBLY
	38.10 [1.500]	15	4-644578-5
	35.56 [1.400]	14	4-644578-4
	33.02 [1.300]	13	4-644578-3
	30.48 [1.200]	12	4-644578-2
	27.94 [1.100]	11	4-644578-1
	25.40 [1.000]	10	4-644578-0
	22.86 [.900]	9	3-644578-9
	20.32 [.800]	8	3-644578-8
	17.78 [.700]	7	3-644578-7
15.24 [.600]	6	3-644578-6	
12.70 [.500]	5	3-644578-5	
10.16 [.400]	4	3-644578-4	
7.62 [.300]	3	3-644578-3	
5.08 [.200]	2	3-644578-2	

**MATERIAL:** CONNECTOR-NYLON UL94V-0 (BLACK)  
 CONTACTS-0.30 [.012] THICK COPPER ALLOY  
 BRIGHT TIN-LEAD 0.00203 [.000080] MIN THICK FOR CONTACTS  
 644578-2 THRU 1-644578-5  
 MATTE WHISKER MITIGATED TIN PLATE 0.00203 [.000080] MIN THICK  
 OVER 0.00076 [.000030] MIN THICK NICKEL FOR CONTACTS  
 3-644578-2 THRU 4-644578-5

- CONTACTS ACCEPT 22 AWG WIRE WITH 1.52 [.060] MAX INSULATION DIAMETER.
- CONTACTS MUST ACCEPT 0.64±0.03 [.025±.001] SQUARE POST AND REMAIN LOCKED IN POSITION.
- IDENTIFICATION NUMBER FOR LAST CIRCUIT MAY NOT APPEAR ON ALL ASSEMBLIES.
- DIMENSIONS IN BRACKETS ARE IN INCHES.

- HOUSING FEATURES ARE: FEED THRU WITH LOCKING RAMP AND WITH POLARIZING TAB.
- OBSOLETE PARTS: OBSOLETE CIS STREAMLINING PER D.RENAUD/D.SINISI
- OBSOLETE PARTS

CONTAINS LEAD	CONTAINS LEAD		
	DIM A	NO. OF POSN	ASSEMBLY
	<del>38.10 [1.500]</del>	<del>15</del>	<del>1-644578-5</del>
	<del>35.56 [1.400]</del>	<del>14</del>	<del>1-644578-4</del>
	<del>33.02 [1.300]</del>	<del>13</del>	<del>1-644578-3</del>
	<del>30.48 [1.200]</del>	<del>12</del>	<del>1-644578-2</del>
	<del>27.94 [1.100]</del>	<del>11</del>	<del>1-644578-1</del>
	<del>25.40 [1.000]</del>	<del>10</del>	<del>1-644578-0</del>
	<del>22.86 [.900]</del>	<del>9</del>	<del>644578-9</del>
	<del>20.32 [.800]</del>	<del>8</del>	<del>644578-8</del>
	<del>17.78 [.700]</del>	<del>7</del>	<del>644578-7</del>
<del>15.24 [.600]</del>	<del>6</del>	<del>644578-6</del>	
<del>12.70 [.500]</del>	<del>5</del>	<del>644578-5</del>	
<del>10.16 [.400]</del>	<del>4</del>	<del>644578-4</del>	
<del>7.62 [.300]</del>	<del>3</del>	<del>644578-3</del>	
<del>5.08 [.200]</del>	<del>2</del>	<del>644578-2</del>	

THIS DRAWING IS A CONTROLLED DOCUMENT.

DIMENSIONS: mm [INCHES]	TOLERANCES UNLESS OTHERWISE SPECIFIED:	DWN S. HOOVER 03-DEC-2004	
0 PLC ±	1 PLC ±	CHK D. BOSSI 03-DEC-2004	
	2 PLC ± 0.13 [.005]	APVD D. BOSSI 03-DEC-2004	NAME MTA .100 CONNECTOR ASSEMBLY 22 AWG, UL94V-0, SPECIAL
	3 PLC ±	PRODUCT SPEC 108-1050	
MATERIAL	FINISH	APPLICATION SPEC 114-1019	SIZE A2
		WEIGHT	CAGE CODE 00779
		CUSTOMER DRAWING	DRAWING NO C-644578
			RESTRICTED TO
			SCALE 5:1
			SHEET 1 OF 1
			REV B3

# Mouser Electronics

Authorized Distributor

Click to View Pricing, Inventory, Delivery & Lifecycle Information:

[TE Connectivity:](#)

[1-644578-3](#)