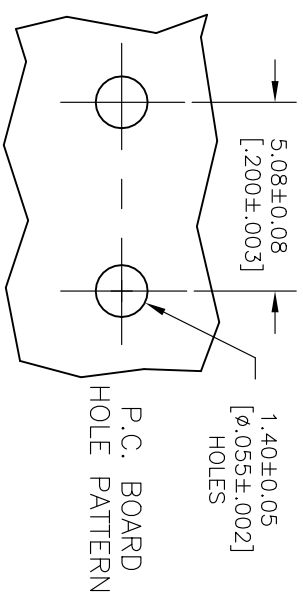
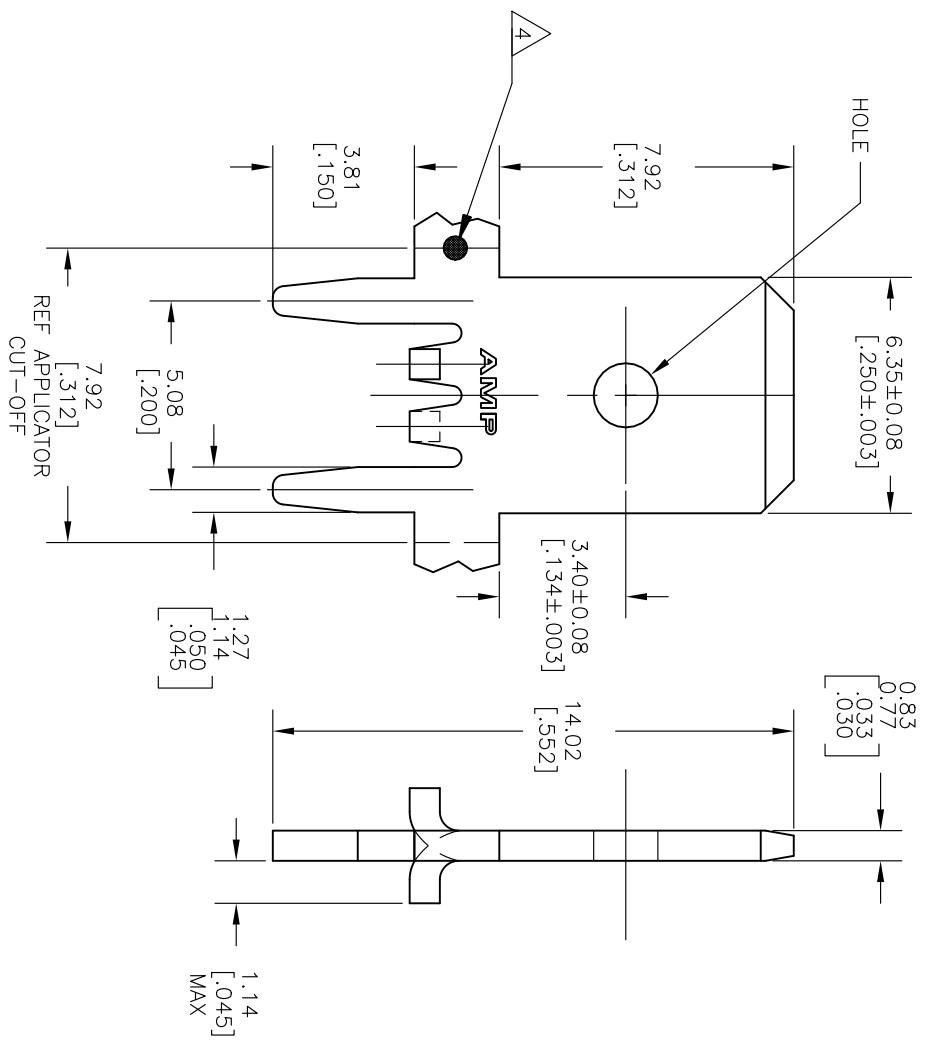


REVISIONS			
P	LR	DESCRIPTION	DATE
S		REVISED PER ECO--18-018731	30NOV2018
			RS LB



- 1 CONTINUOUS STRIP ON REELS.
- 2 TIN PLATE 0.00381 [.000150] MIN OVER 0.00254 [.000100] MIN THK COPPER OR TIN PLATE 0.00381 [.000150] MIN OVER 0.00127 [.000050] MIN THK NICKEL.
- 3 REELED WITH INTERLEAVING PAPER
- 4 OPTIONAL ID MARK, LOCATED APPROX AS SHOWN.
- 5 PRELIMINARY - NOT FOR PRODUCTION
- 6 PREPRODUCTION - FASR REQUIRED

STANDARD	BRASS, ¹ SPECIAL HARD	63824-8
3 STANDARD	BRASS	63824-5
REVERSE	BRASS	63824-3
STANDARD	BRASS	63824-2
STANDARD	BRASS	63824-1
REELING	MATERIAL	PART NO.

THIS DRAWING IS A CONTROLLED DOCUMENT.		DMR	20FEB01
		DRR	RUTH
		CHK	MS FEHER
		APR	N DELBERT
		PRODUT SPEC	20FEB01
		NAME	TAB, FASTON, P.C.BOARD
		SIZE	6.35 [.250]
		CAGE CODE	A3100779
		DRAWING NO	63824
		RESTRICTED TO	
		SCALE	8:1
		SHEET	1 OF 1
		REV	S

DIMENSIONS:		TOLERANCES UNLESS OTHERWISE SPECIFIED:	
INCHES		± .010	
0 P.L.C.	± .010	± .028	[.010]
1 P.L.C.	± .010	± .010	
2 P.L.C.	± .010	± .010	
3 P.L.C.	± .010	± .010	
4 P.L.C.	± .010	± .010	
FINISH			

MATERIAL	FINISH
SEE TABLE	

Mouser Electronics

Authorized Distributor

Click to View Pricing, Inventory, Delivery & Lifecycle Information:

[TE Connectivity:](#)

[63824-3](#)