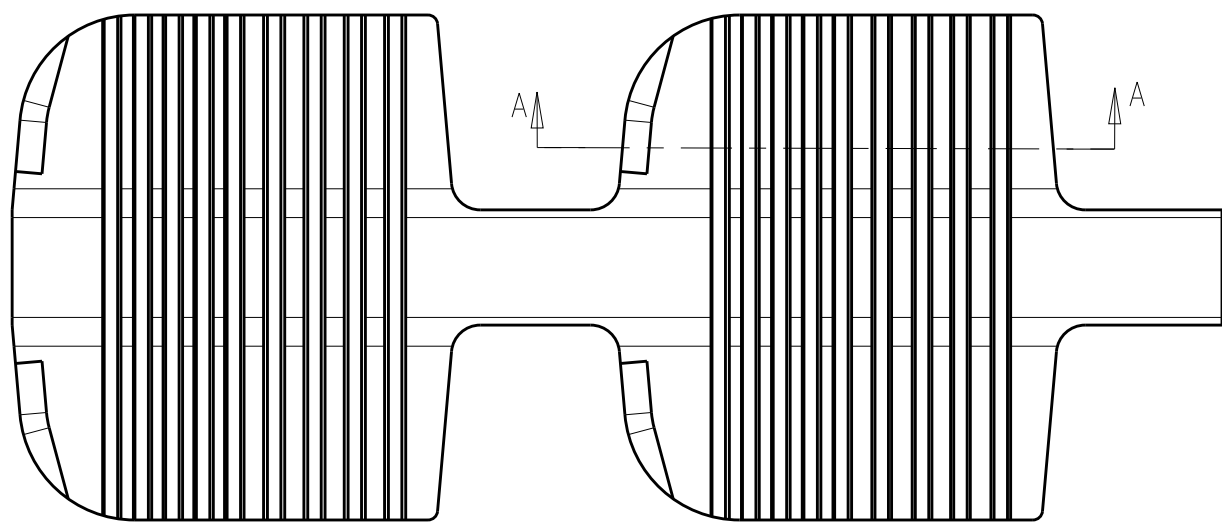


D

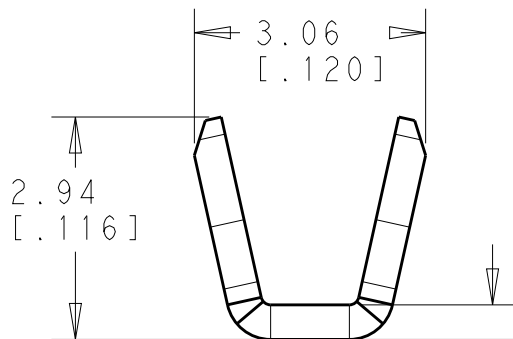
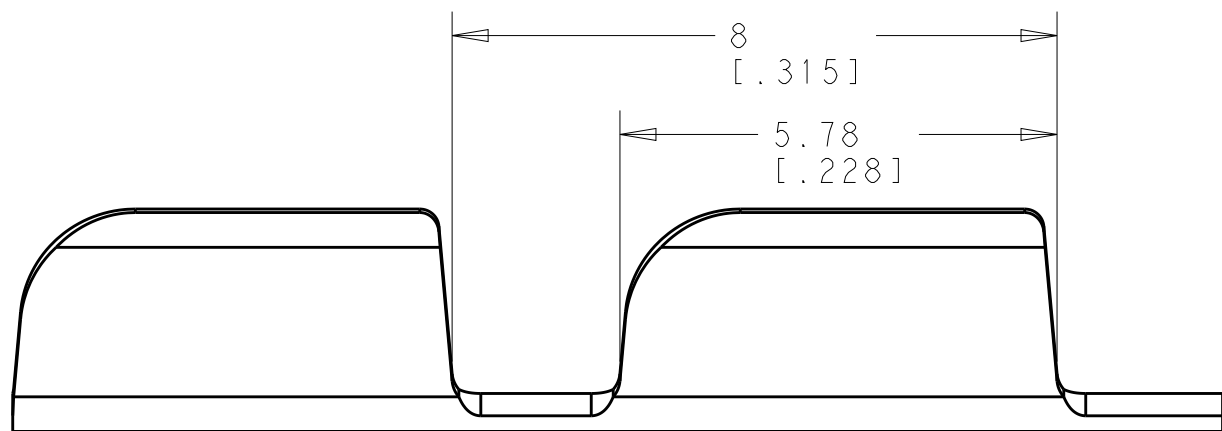


9 AMPLIVAR SERRATIONS

- 1 PRODUCT PROVIDED IN STRIP FORM ON REELS;
BREAKS MAY BE PRESENT
- 2 DIMENSION IN BRACKETS ARE IN INCHES
- 3 CRIMP WIDTH: .090 F (AMPLIVAR TYPE)
CRIMP HEIGHT (+/- .002) = (TOTAL CMA + 6950)/150000
- 4 USE WITH ALUMINUM WIRE.

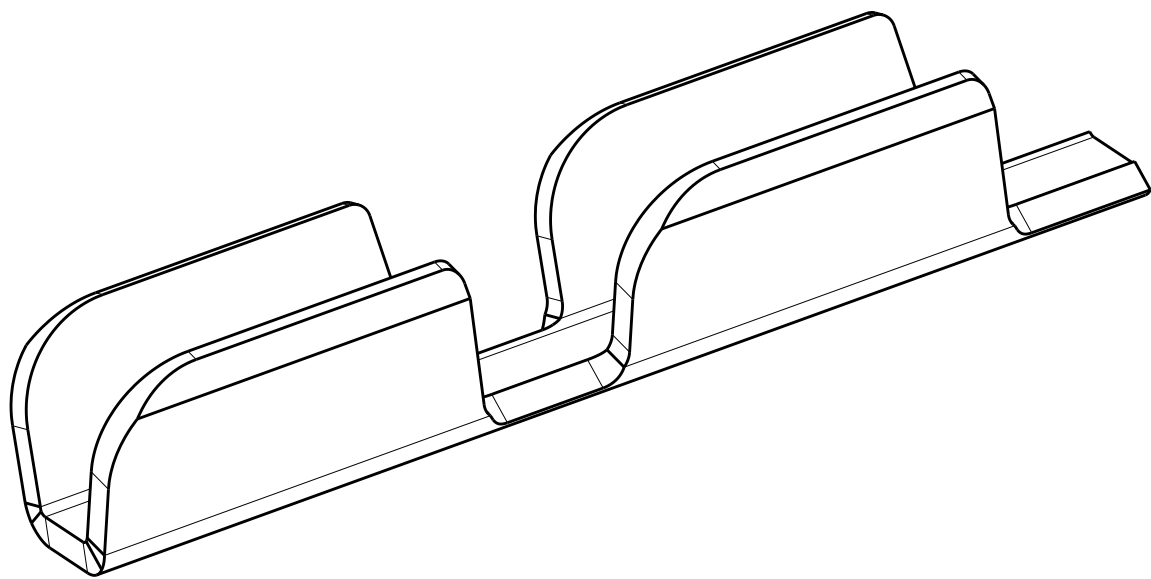
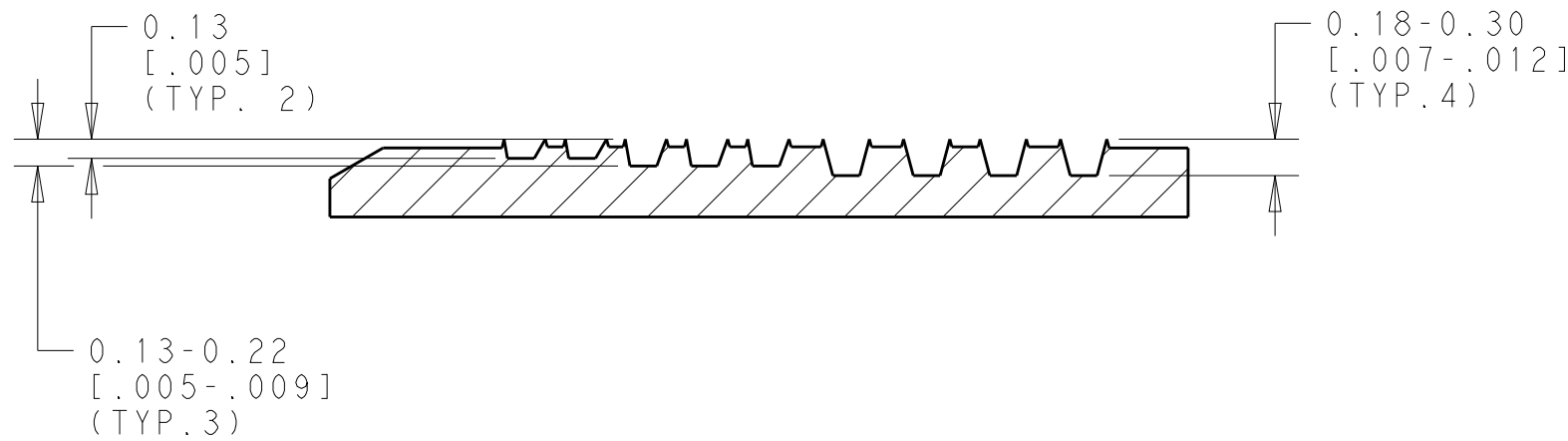
D

C



0.46±0.03
[.018±.002]

B



B

SECTION A - A
SCALE 20:1

2296314-1
PART NO.

A

THIS DRAWING IS A CONTROLLED DOCUMENT.		DWN GARY.Z 29OCT2015	TE Connectivity			
DIMENSIONS: mm[INCHES]		CHK JAIN.L 29OCT2015				
		APVD RAJENDRA 29OCT2015	NAME AMPLIVAR SPLICE 1000-2500 CMA			
		PRODUCT SPEC 108-32030	SIZE A2			
MATERIAL BRASS		APPLICATION SPEC 114-2003	CAGE CODE -		DRAWING NO C-2296314	RESTRICTED TO -
FINISH TIN		WEIGHT -	SCALE 10:1		SHEET 1 OF 1	REV A
		CUSTOMER DRAWING				

A

Mouser Electronics

Authorized Distributor

Click to View Pricing, Inventory, Delivery & Lifecycle Information:

[TE Connectivity:](#)

[2296314-1](#)