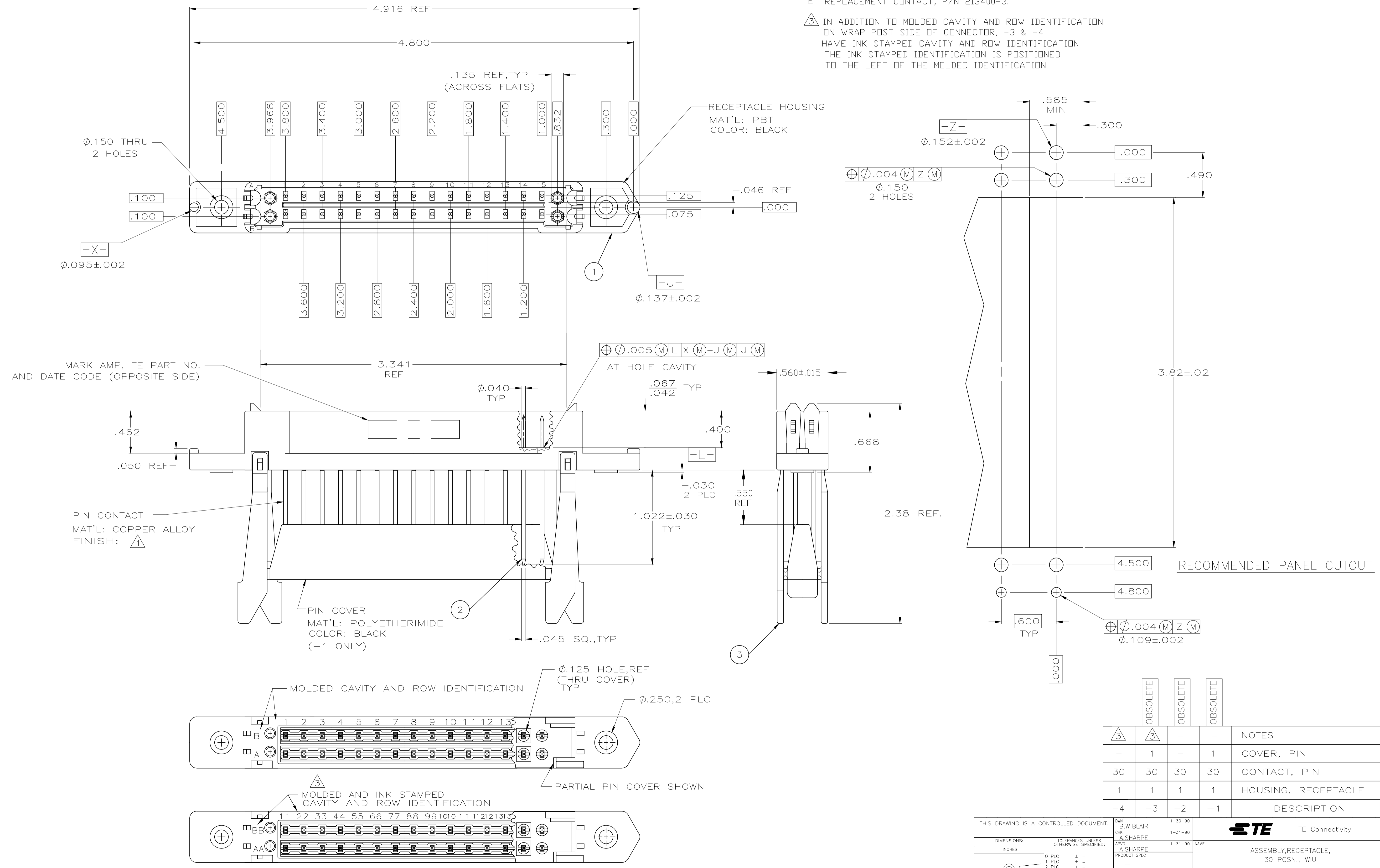


REVISIONS				
P	LTR	DESCRIPTION	DATE	OWN / APVD
R		REV PER ECO 18-004072	8-14-18	CT / PD

1 PLATED GOLD .000050 THK. FOR A LENGTH OF .343 FROM MATING END OF CONTACT WITH POINT OF MEASUREMENT .150±.025 FROM MATING END OF CONTACT. REMAINDER PLATED TIN-LEAD .000100 TO .000300 THK, WITH POINT OF MEASUREMENT 150±.025 FROM TRANSITION TO WRAP POST. ENTIRE CONTACT IS UNDERPLATED NICKEL .000050 MIN THK.

2 REPLACEMENT CONTACT, P/N 213400-3.

3 IN ADDITION TO MOLDED CAVITY AND ROW IDENTIFICATION ON WRAP POST SIDE OF CONNECTOR, -3 & -4 HAVE INK STAMPED CAVITY AND ROW IDENTIFICATION. THE INK STAMPED IDENTIFICATION IS POSITIONED TO THE LEFT OF THE MOLDED IDENTIFICATION.



QTY	DESCRIPTION	REVISION	DATE
1	COVER, PIN	1	
30	CONTACT, PIN	30	
1	HOUSING, RECEPTACLE	1	
-4	-3	-2	-1

THIS DRAWING IS A CONTROLLED DOCUMENT.		DIN B.W. BLAIR 1-30-90	
DIMENSIONS: INCHES		CIR A. SHARPE 1-31-90	
TOLERANCES UNLESS OTHERWISE SPECIFIED:		APVD A. SHARPE 1-31-90	
0 PLC ± -		NAME	
1 PLC ± -		ASSEMBLY, RECEPTACLE, 30 POSN., WIU	
2 PLC ± -		PRODUCT SPEC	
3 PLC ± .010		APPLICATION SPEC	
4 PLC ± -		SIZE CAGE CODE DRAWING NO	
ANGLES ± -		RESTRICTED TO	
MATERIAL SEE CALL OUT		WEIGHT 0.000000	
FINISH SEE CALL OUT		A1 00779 C=213395	
CUSTOMER DRAWING		SCALE 2:1 SHEET 1 OF 1 REV R	

# Mouser Electronics

Authorized Distributor

Click to View Pricing, Inventory, Delivery & Lifecycle Information:

[TE Connectivity:](#)

[213395-4](#)