

NUMBER C-179472

METRIC
三角法 (3rd ANGLE PROJECTION)

METRIC

PRINT DIST
単位: mm DIMENSIONS IN MM. DO NOT SCALE PRINT

2-179472-4 : 本 ☒

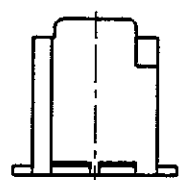
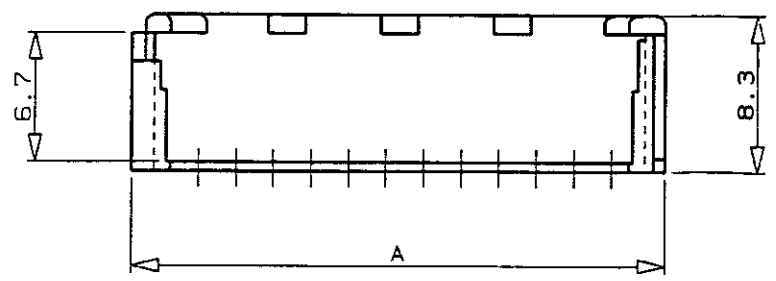
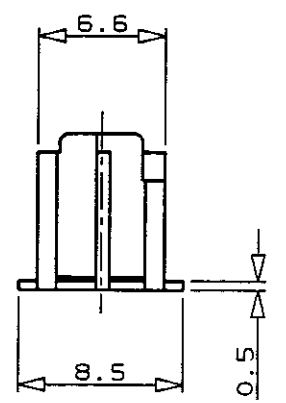
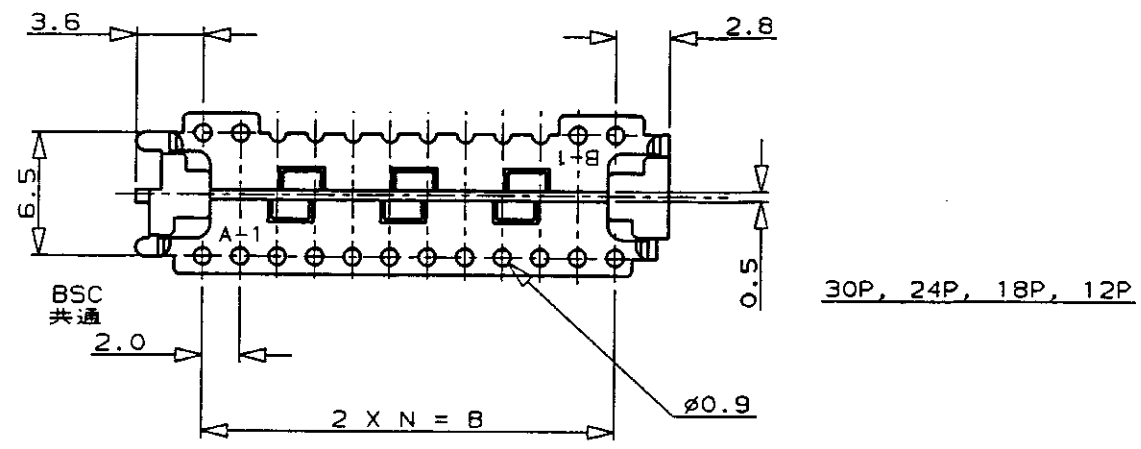
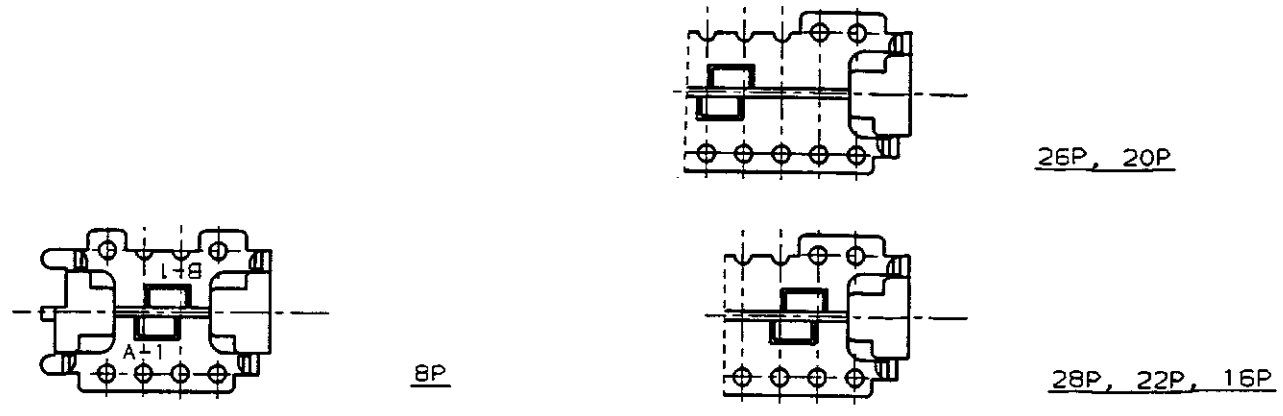
2-179472-4 : AS SHOWN

注記

1. 通用コネクタ型番 : X-179228-X (リセ)

NOTE

1. CONNECTOR P/N : X-179228-X (REC)



34.3	28.0	14	30	3-179472-0
32.3	26.0	13	28	2- -8
30.3	24.0	12	26	2- -6
28.3	22.0	11	24	2- -4
26.3	20.0	10	22	2- -2
24.3	18.0	9	20	2- -0
22.3	16.0	8	18	1- -8
20.3	14.0	7	16	1-179472-6
16.3	10.0	5	12	1-179472-2
12.3	6.0	3	8	179472-8
A	B	N	PUS 極数	型番 P/N

B	REVISED	FJ00-4832-96	H.S.T.F.	7/25 '96
A	REVISED	FJ00-2305-95	T.F.S.K.	4/5 '95
O	RELEASED	FJ00-0588-94	T.F.S.K.	5/18 '94
LTR	変更 (REVISION RECORD)	DR	CHK	DATE

Copyright ©1990年 AMP (Japan) LTD. ALL RIGHTS RESERVED.		Copyright ©1990 AMP (Japan) LTD. ALL RIGHTS RESERVED.	
指定電線断面積 (WIRE RANGE) — # — mm ² (AWG — # —)	被覆外径 (INSULATION DIA.) — # — mmφ	名称 (NAME) CT ダブルローコネクタ用ホルダー (タイプ: CT クリンプタイプ II) HOLDER FOR CT DOUBLE ROW CONN. (TYPE: CT CRIMP TYPE II)	
材料 (MATERIAL) 66NYLON 66ナイロン樹脂	色 (COLOR) NATURAL 自然色	一般公差 (GENERAL TOLERANCE) 10以下: ±0.2 10を超え 30以下: ±0.25 30を超え 100以下: ±0.3 角 度: ±3°	SIZE LOC 番号 (No.) B J C-179472
DR. T. FURUYA 5/17 '94	DE. T. FURUYA 5/17 '94	尺度 (SCALE) — # —	REV. SHEET B 1 OF 1
CHK. S. KUBOUCHI 5/18 '94	APP. S. Kubouchi 5/18 '94		

AMP 日本エー・エム・ピー株式会社
Kawasaki, Japan

Mouser Electronics

Authorized Distributor

Click to View Pricing, Inventory, Delivery & Lifecycle Information:

[TE Connectivity:](#)

[2-179472-0](#)