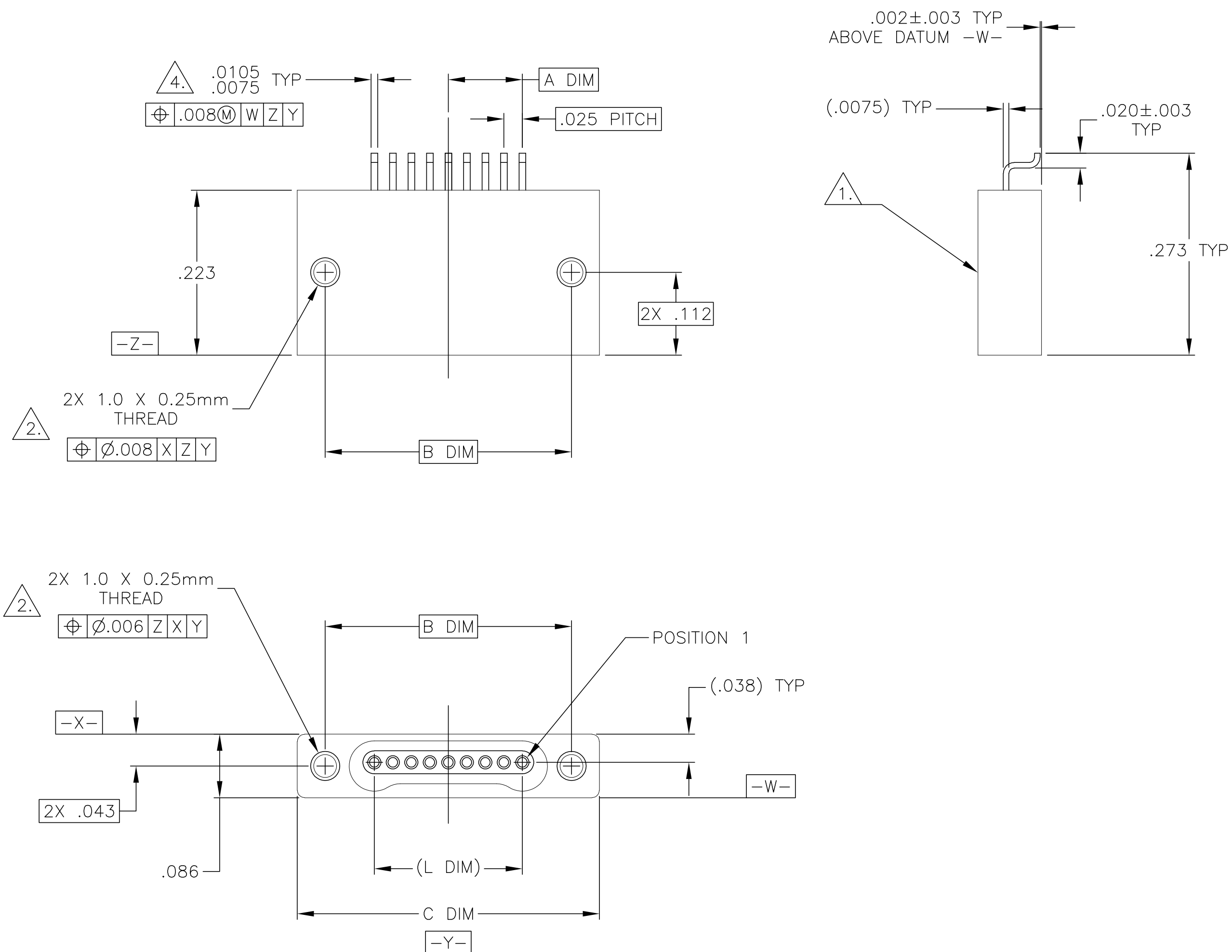


LOC	DIST	REVISIONS					
DF	DO	P	LTR	DESCRIPTION	DATE	DWN	APVD
			T1	REVISED PER ECO-11-005139	21MAR11	RK	HMR



1. SHELL OPTIONS (TO BE SPECIFIED IN NANONICS PART NUMBER):
METAL: 6061-T6 ALUMINUM, ELECTROLESS NICKEL PLATED PER MIL-C-26074 (STANDARD) OR GOLD PLATED PER MIL-G-45204
303 STAINLESS STEEL, PASSIVATED PER SAE-AMS-QQ-P-35
INSULATOR MATERIAL FOR ALL METAL SHELLS IS LIQUID CRYSTAL POLYMER (LCP) PER MIL-M-24519 OR PER ASTM D5138
PLASTIC: LIQUID CRYSTAL POLYMER (LCP) PER MIL-M-24519 OR PER ASTM D5138

2. STANDARD 1.0 X 0.25mm JACKSCREW AND MOUNTING THREADS ARE SHOWN FOR REFERENCE ONLY AND MUST BE SPECIFIED IN THE NANONICS PART NUMBER WHEN REQUIRED. 1.2 X 0.25mm THREADS ALSO AVAILABLE.



3. MOUNTING HARDWARE IS AVAILABLE WITH THIS CONFIGURATION (NOT SHOWN). HARDWARE MUST BE SPECIFIED IN THE NANONICS PART NUMBER. CONSULT TE CONNECTIVITY FOR DETAILS.

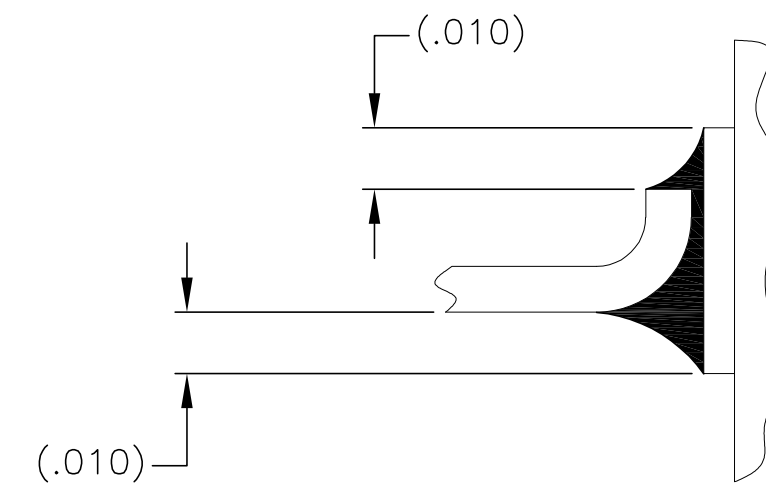
4. SMT LEADS ARE BeCu, TIN LEAD PLATED 60/40 COMPOSITION PER SAE-AMS-P-81728

5. NANONICS TERMINATION CODE: L2

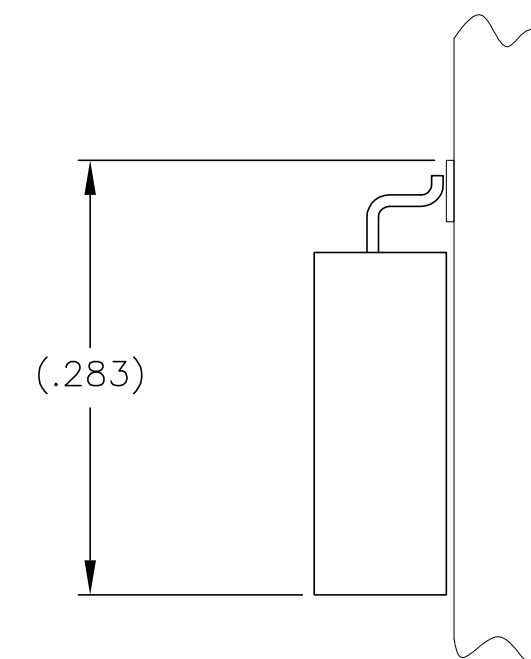
6. THIS DRAWING PREVIOUSLY IDENTIFIED AS NANONICS N10138/130

SIZE	A DIM	B DIM	C DIM $\pm .0050$	(L DIM)
05	.050	.233	.3085	(.100)
09	.100	.333	.4085	(.200)
15	.175	.483	.5585	(.350)
25	.300	.733	.8085	(.600)
37	.450	1.033	1.1085	(.900)
51	.625	1.383	1.4585	(1.250)

THIS DRAWING IS A CONTROLLED DOCUMENT.		DWN M. STORRY 02-15-01		 TE Connectivity			
		CHK S. KAIN 02-15-01					
DIMENSIONS: INCHES		TOLERANCES UNLESS OTHERWISE SPECIFIED:		RECEPTACLE ASSEMBLY, HORIZONTAL SURFACE MOUNT, SINGLE ROW DUAL OBE, PLASTIC OR METAL			
		APVD —				NAME	
		PRODUCT SPEC —					
		APPLICATION SPEC —					
0 PLC ± — 1 PLC ± — 2 PLC ± .010 3 PLC ± .005 4 PLC ± — ANGLES ± ± 1°		WEIGHT —		SIZE A2			
MATERIAL SEE NOTES		FINISH SEE NOTES		CAGE CODE 00779			
				DRAWING NO C-1589462			
				RESTRICTED TO —			
		CUSTOMER DRAWING		SCALE 8:1			
				SHEET 1 of 2			
				REV T1			





TYPICAL FOOT PLACEMENT ON SOLDER PAD



TYPICAL PCB LAYOUT

SIZE 09 SHOWN FOR REFERENCE

7. POSITIONAL TOLERANCES FOR BASIC DIMENSIONED FEATURES ARE RELATIVE TO FIDUCIALS OR SOME SIMILAR DATUM REFERENCE DEFINED BY THE PCB DESIGNER.

THIS DRAWING IS A CONTROLLED DOCUMENT.			DWN M. STORRY 02-15-01 CHK S. KAIN 02-15-01 APVD —		 TE Connectivity										
DIMENSIONS: INCHES		TOLERANCES UNLESS OTHERWISE SPECIFIED:		NAME		RECEPTACLE ASSEMBLY, HORIZONTAL SURFACE MOUNT, SINGLE ROW DUAL OBE, PLASTIC OR METAL									
		0 PLC ± — 1 PLC ± — 2 PLC ± .010 3 PLC ± .005 4 PLC ± — ANGLES ± 1°		PRODUCT SPEC — APPLICATION SPEC —		SIZE A2		CAGE CODE 00779		DRAWING NO C-1589462		RESTRICTED TO —			
MATERIAL —		FINISH —		WEIGHT —											
CUSTOMER DRAWING										SCALE 8:1		SHEET 2 OF 2		REV T1	

Mouser Electronics

Authorized Distributor

Click to View Pricing, Inventory, Delivery & Lifecycle Information:

[TE Connectivity:](#)

[2-1589462-9](#)