

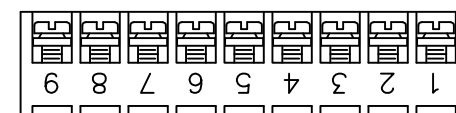
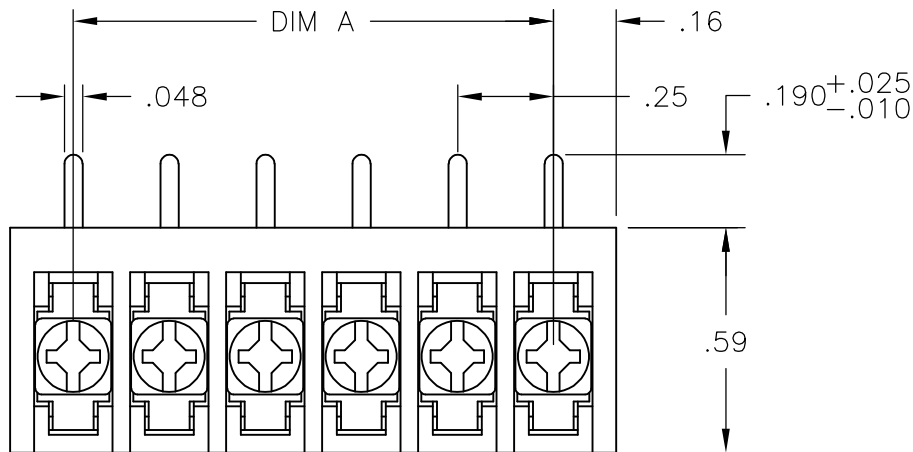
THIS DRAWING IS UNPUBLISHED. QUELLE RECHTSVERHALTEN BEI WEITERGEBUNG. REPRODUCED FROM THE ORIGINAL. ALL RIGHTS RESERVED. TODOS LOS DERECHOS RESERVADOS. COPIRIGHT - By -

| | | | | |
|-----|------|-----------|---------|---------------------------|
| LOC | DIST | REVISIONS | | |
| FT | 0 | P | LTR REV | DESCRIPTION |
| | | | F | REVISED PER ECO-11-023401 |
| | | | | DATE: 01DEC11 |
| | | | | DWN: KH |
| | | | | APVD: MS |

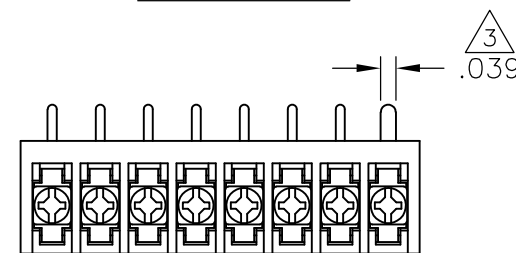
MATERIAL:
 HOUSING: THERMOPLASTIC, UL94V-0, BLACK.
 TERMINAL: BRIGHT TIN PLATED, COPPER ALLOY.
 M3 SCREWS: ZINC PLATED STEEL.
 ELECTRICAL:
 RATED CURRENT: 10A.
 OPERATING VOLTAGE: 300V.
 WIRE RANGE: 16-30 AWG.

MECHANICAL:
 PITCH (TERMINAL SPACING): .250"
 OPERATING TEMP.: 120°C MAX.

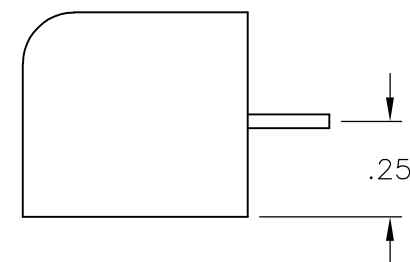
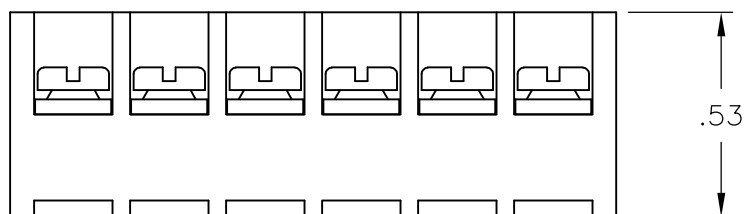
- 1 SEE FIGURE.
- 2 M3 SCREWS BOTTOMED.
- 3 RECOMMENDED PCB HOLE DIAMETER: .090".
- 4 PRELIMINARY PART NUMBER.
- 5 OBSOLETE PARTS: OBSOLETE CIS STREAMLINING PER D.RENAUD/D.SINISI



1-1546119-4



3-1546099-2

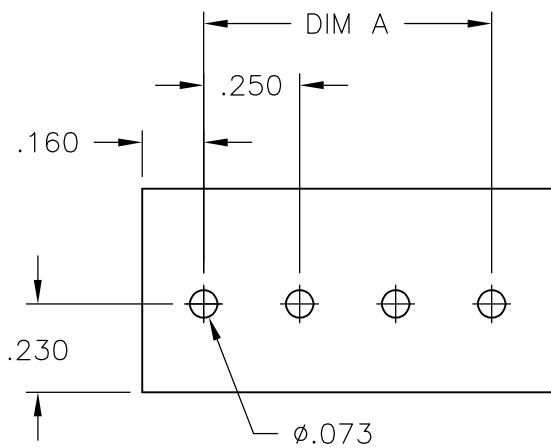


5 1 OBSOLETE

4 1

5 2 OBSOLETE

| | | | |
|---------|-----------|----------------|-------------|
| 7.25 | 30 | 3PCR-30-006 | 3-1546099-0 |
| 7.00 | 29 | 3PCR-29-006 | 2-1546099-9 |
| 6.75 | 28 | 3PCR-28-006 | 2-1546099-8 |
| 6.50 | 27 | 3PCR-27-006 | 2-1546099-7 |
| 6.25 | 26 | 3PCR-26-006 | 2-1546099-6 |
| 6.00 | 25 | 3PCR-25-006 | 2-1546099-5 |
| 5.75 | 24 | 3PCR-24-006 | 2-1546099-4 |
| 5.50 | 23 | 3PCR-23-006 | 2-1546099-3 |
| 5.25 | 22 | 3PCR-22-006 | 2-1546099-2 |
| 5.00 | 21 | 3PCR-21-006 | 2-1546099-1 |
| 4.75 | 20 | 3PCR-20-006 | 2-1546119-0 |
| 4.50 | 19 | 3PCR-19-006 | 1-1546119-9 |
| 4.25 | 18 | 3PCR-18-006 | 1-1546099-8 |
| 4.00 | 17 | 3PCR-17-006 | 1-1546099-7 |
| 3.75 | 16 | 3PCR-16-006 | 1-1546099-6 |
| 3.50 | 15 | 3PCR-15-006 | 1-1546099-5 |
| 3.25 | 14 | 3PCR-14-006 | 1-1546099-4 |
| 3.00 | 13 | 3PCR-13-006 | 1-1546099-3 |
| 2.75 | 12 | 3PCR-12-006 | 1-1546119-7 |
| 2.50 | 11 | 3PCR-11-006 | 1-1546119-6 |
| 2.25 | 10 | 3PCR-10-006 | 1-1546119-5 |
| 2.00 | 9 | 3PCR-09-256 | 1-1546119-4 |
| 2.00 | 9 | 3PCR-09-006 | 1-1546119-3 |
| 1.75 | 8 | 3PCR-08-310 | 3-1546099-2 |
| 1.75 | 8 | 3PCR-08-006 | 1-1546119-2 |
| 1.50 | 7 | 3PCR-07-006 | 1-1546119-0 |
| 1.25 | 6 | 3PCR-06-302 | 3-1546099-1 |
| 1.25 | 6 | 3PCR-06-006 | 1-1437646-2 |
| 1.00 | 5 | 3PCR-05-006 | 1437646-9 |
| .75 | 4 | 3PCR-04-006 | 1546119-8 |
| .50 | 3 | 3PCR-03-006 | 1546099-1 |
| .25 | 2 | 3PCR-02-006 | 1546119-5 |
| DIM "A" | NO OF POS | CATALOG NUMBER | TE PART NO. |



RECOMMENDED PCB LAYOUT

| | | | | |
|---|--|-----------------------------------|-------------------------|--|
| THIS DRAWING IS A CONTROLLED DOCUMENT. | | DWN/DESIGNED: S. SCHLEGEL 4/22/03 | TE Connectivity | |
| CHK/CONTROLLED: S. YODER 6/18/02 | | APVD/APPROVED: S. YODER 6/18/02 | NAME: D. RENAUD | |
| DIMENSIONS: INCHES | | PRODUCT SPEC: 3PCR-XX-006 | 3PCR-XX-006 ASSEMBLY | |
| TOLERANCES UNLESS OTHERWISE SPECIFIED: 0 PLC/DIG: ± - | | APPLICATION SPEC: 3PCR-XX-006 | SIZE: A3 | |
| 1 PLC/DIG: ± - | | SCALE: AS SHOWN | CAGE CODE: 00779 | |
| 2 PLC/DIG: ± .02 | | RESTRICTED TO: INTERNAL USE ONLY | DRAWING NO: C-1437646-9 | |
| 3 PLC/DIG: ± .010 | | WEIGHT: APPROX. - | SHEET: 1 OF 1 | |
| 4 PLC/DIG: ± - | | FINISH/BERFLAECHE/FARBE: - | REV: F | |
| ANGLES/ANGLES ± - | | CUSTOMER DRAWING | | |

Mouser Electronics

Authorized Distributor

Click to View Pricing, Inventory, Delivery & Lifecycle Information:

[TE Connectivity:](#)

[1546119-5](#)