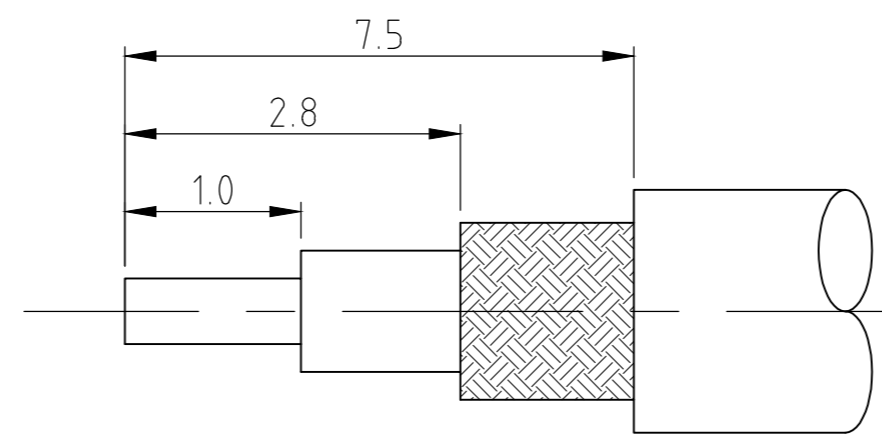
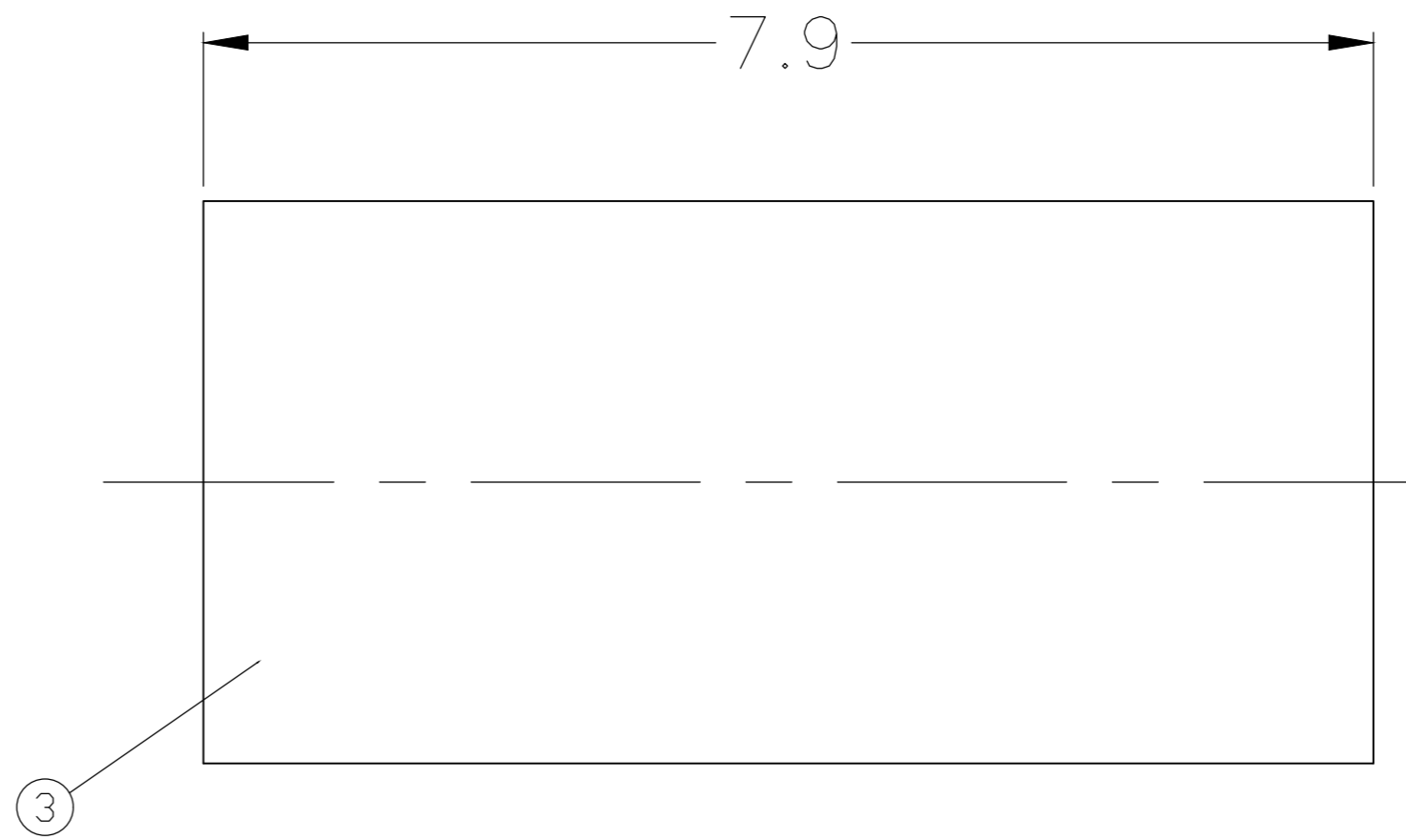
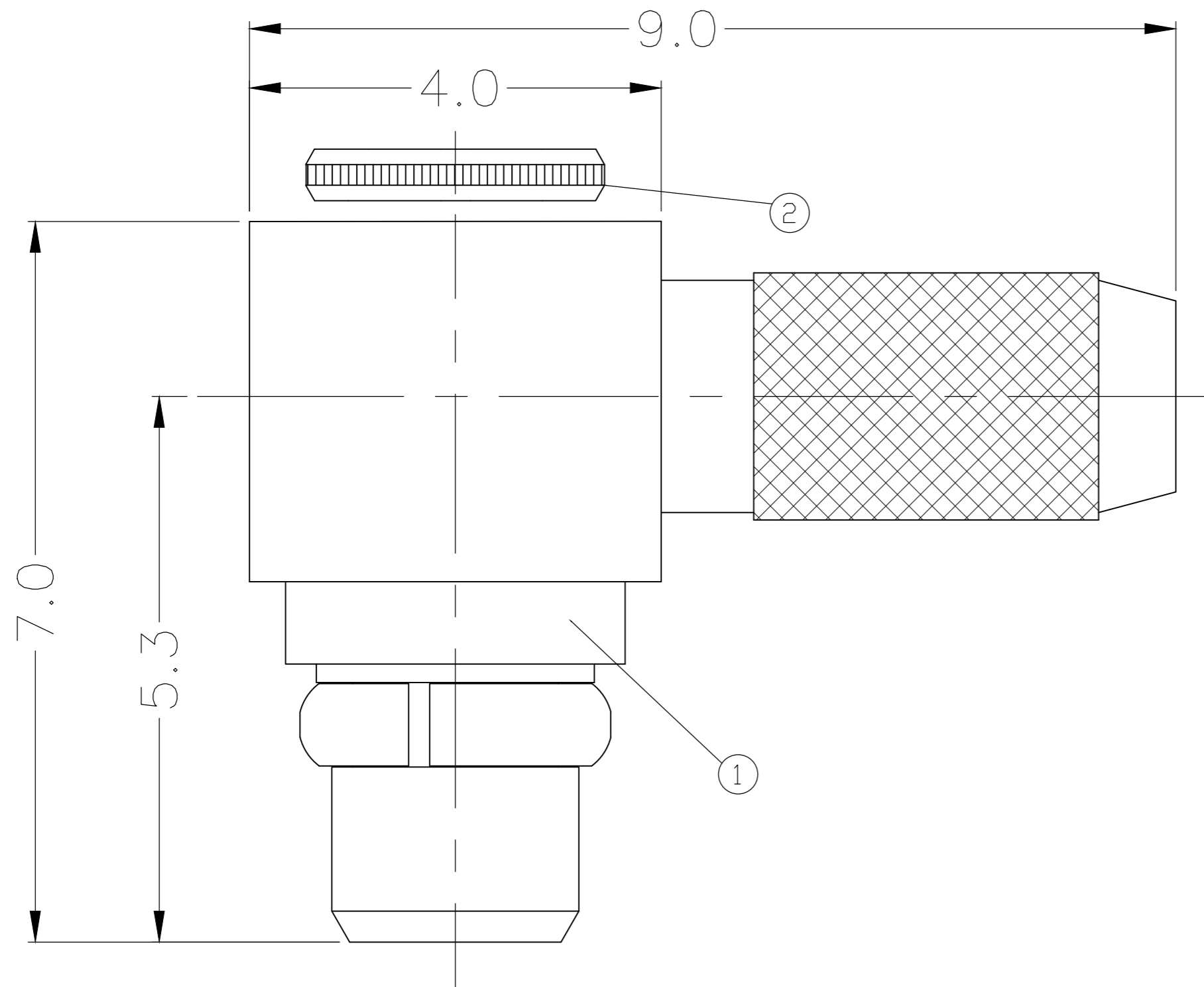


THIS DRAWING IS UNPUBLISHED. RELEASED FOR PUBLICATION
 © COPYRIGHT - By - ALL RIGHTS RESERVED.

REVISIONS					
P	LTR	DESCRIPTION	DATE	DWN	APVD
F2		ECO-18-017129	30OCT2018	RZ	RS



RECOMMENDED CABLE STRIP LENGTH (NTS)

- ITEMS 1, 2, 3, AND 4 PACKAGED UNASSEMBLED
- CRIMP REQUIREMENTS: FERRULE 2.67 [.105] HEX
- CRIMP REQUIREMENTS: FERRULE 3.25 [.128] HEX
- CRIMP REQUIREMENTS: FERRULE 3.86 [.152] HEX
- ITEM 4 NOT SHOWN

1408149

B

ELECTRICAL

MECHANICAL

ENVIRONMENTAL

Impedance (Ohm) 50
 Frequency Range (GHz) DC to 6GHz
 Voltage Rating (Peak) @ Sea Level 170 V RMS
 Insulation Resistance (MIN.) 1000 M ohms
 Contact Resistance (Milliohms MAX)
 Center Contact 5.0
 Outer Contact 2.5
 Dielectric Withstand Voltage: 500 V RMS Max
 Insertion Loss : N/A dB
 VSWR: 1.35 MAXI (GHz)
 RF leakage: N/A
 3rd Intermodulation: N/A

Interface Dimension CECC 22 000
 Force to Engage and Disengage (N)
 Engage: 18 MAXI
 Disengage: 6 MINI
 Center Contact Captivation
 Axial (N) 6.0
 Radial (In/Oz) N/A
 Cable Retention
 Axial (Lbs) N/A
 Mating cycles 500 cycles

TEMPERATURE RANGE
-55 TO + 125
 THERMAL SHOCK
MIL-STD-202, METHOD107, B
 CORROSION
MIL-STD-202, METHOD101, B
 VIBRATION
MIL-STD-202, METHOD204, B
 MOISTURE RESISTANCE
MIL-STD-202, METHOD106
 ROHS COMPLIANT

OMNIFLEX 200	②	1405671-2	8-1403102-5	1408146-2	1408147-2	1408149-4
RD-316	④	---	3-413889-2	1408146-2	1408147-1	1408149-3
RG-316	③	---	3-413889-1	1408146-2	1408147-1	1408149-2
RG-178 RG-196	②	---	3-413889-3	1408146-2	1408147-2	1408149-1
CABLE CRIMP INFO	④ SHRINK TUBING	③ FERRULE	② CAP	① HOUSING ASSY	PART NUMBER	
THIS DRAWING IS A CONTROLLED DOCUMENT.		DWN 19NOV2001	TE Connectivity Ltd.			
DIMENSIONS: mm		CHK 22OCT00				
TOLERANCES UNLESS OTHERWISE SPECIFIED:		APVD 22OCT00	NAME			
0 PLC ± -		PRODUCT SPEC	MMCX RIGHT ANGLE CABLE PLUG-CRIMP			
1 PLC ± 0.26 (.010)		APPLICATION SPEC	SIZE CAGE CODE DRAWING NO RESTRICTED TO			
2 PLC ± 0.13 (.005)		408-8627	A2 00779 C=1408149			
3 PLC ± -		WEIGHT 0.000000	SCALE 20:1 SHEET 1 of 1 REV F2			
4 PLC ± -		CUSTOMER DRAWING				
ANGLES ± 1°						

A

Mouser Electronics

Authorized Distributor

Click to View Pricing, Inventory, Delivery & Lifecycle Information:

[TE Connectivity:](#)

[1408149-3](#)