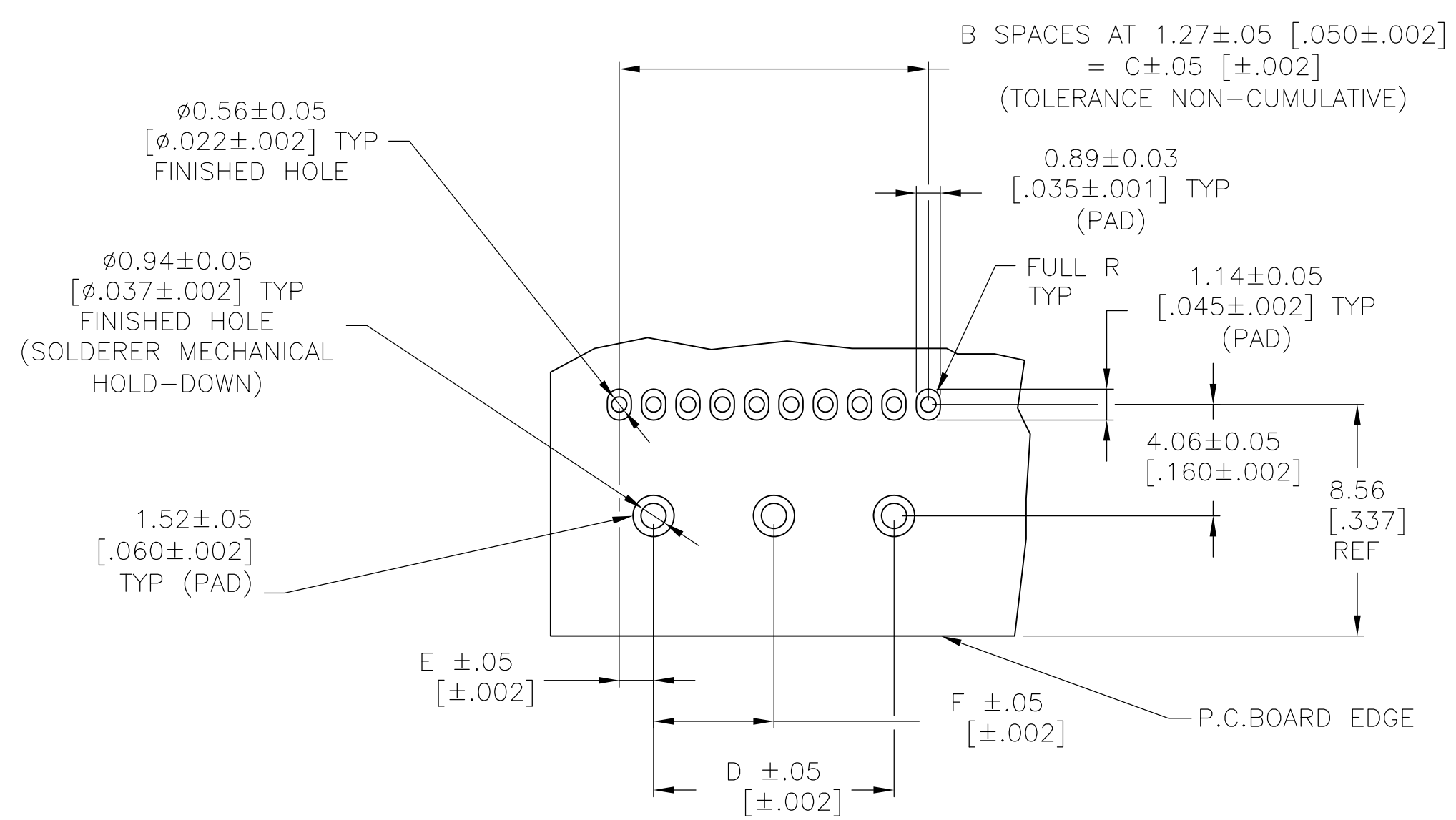
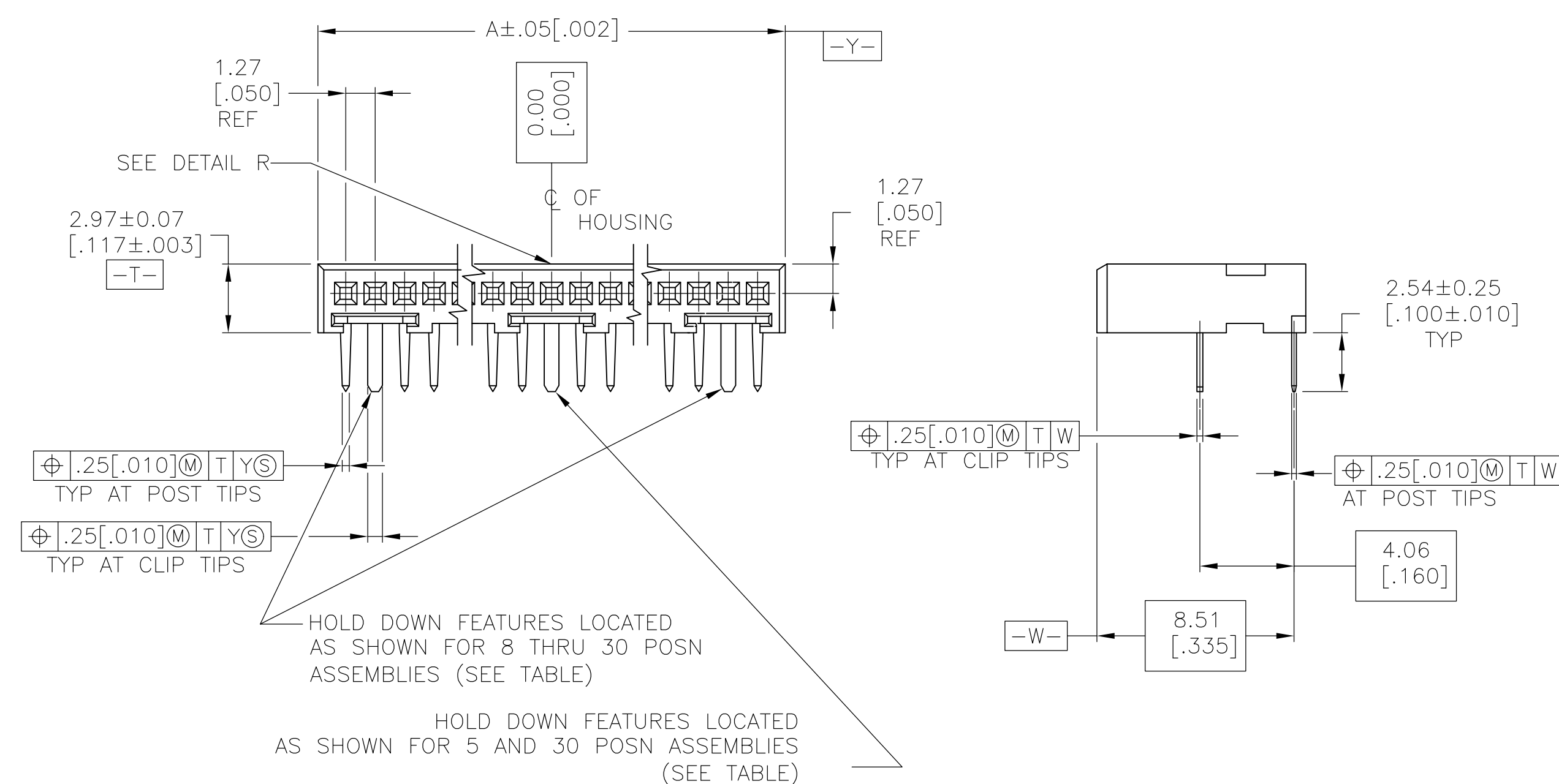
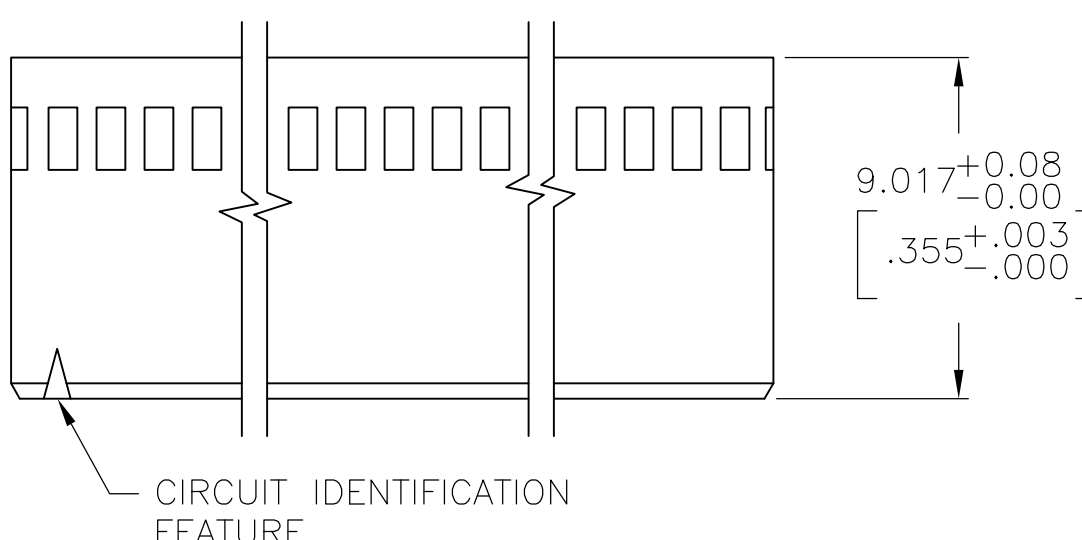


D

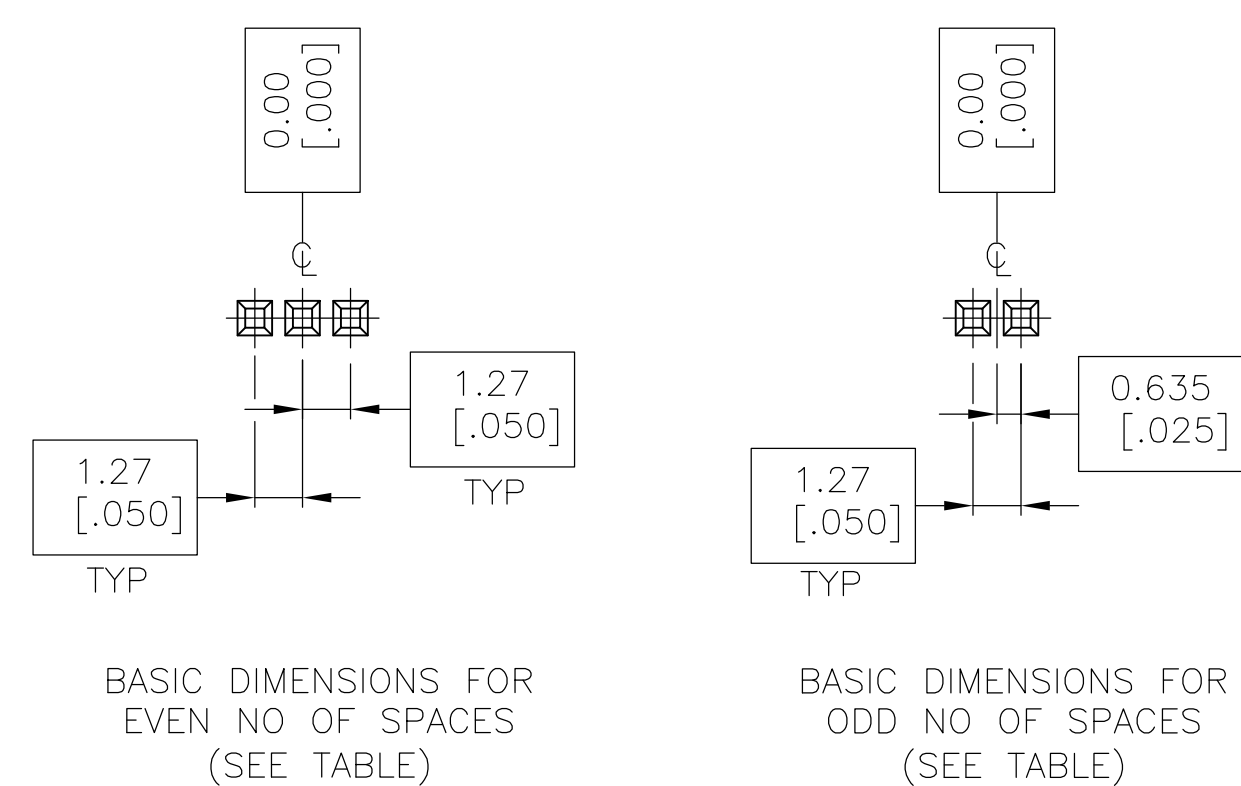
C

B

A



RECOMMENDED HOLE PATTERN



DETAIL R

- 1
- CONTACT AREA PLATED WITH .000762 [.000030] GOLD; SOLDER TAILS PLATED WITH .000381 [.000150] TIN-LEAD; ALL OVER .001270 [.000050] NICKEL
- 2
- POINT OF MEASUREMENT FOR GOLD THICKNESS IS .76 [.030] FROM MATING END OF CONTACT
- 3
- CONTACT AREA PLATED WITH .000762 [.000030] GOLD; SOLDER TAILS PLATED WITH .000381 [.000150] TIN; ALL OVER .001270 [.000050] NICKEL
- 4
- FINISH: 0.00002 [.000001] MIN GOLD ON GOLD PLATED AREA, 0.00381-0.00635 [.000150-.000250] MATTE TIN-LEAD ON TIN PLATED AREA. UNDER PLATING TO BE 0.00127-0.00254 [.000050-.000100] NICKEL ON ENTIRE CONTACT
- 5
- PRELIMINARY PART - NOT RELEASED FOR PRODUCTION
- 6
- OBSOLETE PARTS: OBSOLETE CIS STREAMLINING PER D.RENAUD/D.SINISI
- 7
- SUPERSEDED
- 8
- OBSOLETE
- 9
- FINISH: 0.00002 [.000001] MIN GOLD ON GOLD PLATED AREA, 0.00381-0.00635 [.000150-.000250] MATTE TIN ON TIN PLATED AREA. UNDER PLATING TO BE 0.00127-0.00254 [.000050-.000100] NICKEL ON ENTIRE CONTACT

8

7

6

5

4

3

2

1

THIS DRAWING IS UNPUBLISHED.

RELEASED FOR PUBLICATION

ALL RIGHTS RESERVED.

LOCAD

DIST00

REV 1

LTR

DESCRIPTION

DATE

DWN

APVD

SEE SHEET 1

—

—

—

<div>9</div>	—	2.54 [.100]	—	5.08 [.200]	4	7.47 [.294]	5	<div>5</div>	7-104196-8
	17.15 [.675]	1.27 [.050]	34.29 [1.350]	36.83 [1.450]	29	39.22 [1.544]	30		7-104196-7
	—	1.27 [.050]	27.94 [1.100]	30.48 [1.200]	24	32.87 [1.294]	25	<div>5</div>	7-104196-6
	—	1.27 [.050]	21.59 [.850]	24.13 [.950]	19	26.52 [1.044]	20	<div>5</div>	7-104196-5
	—	1.27 [.050]	15.24 [.600]	17.78 [.700]	14	20.17 [.794]	15	<div>5</div>	7-104196-4
	—	1.27 [.050]	11.43 [.450]	13.97 [.550]	11	16.36 [.644]	12	<div>5</div>	7-104196-3
	—	1.27 [.050]	8.89 [.350]	11.43 [.450]	9	13.82 [.544]	10		7-104196-2
	—	—	—	—		—	—	<div>5</div>	7-104196-1
	<div>3</div>	—	2.54 [.100]	—	5.08 [.200]	4	7.47 [.294]	5	
17.15 [.675]		1.27 [.050]	34.29 [1.350]	36.83 [1.450]	29	39.22 [1.544]	30		5-104196-7
—		1.27 [.050]	27.94 [1.100]	30.48 [1.200]	24	32.87 [1.294]	25		5-104196-6
—		1.27 [.050]	21.59 [.850]	24.13 [.950]	19	26.52 [1.044]	20		5-104196-5
—		1.27 [.050]	15.24 [.600]	17.78 [.700]	14	20.17 [.794]	15	<div>6</div>	5-104196-4
—		1.27 [.050]	11.43 [.450]	13.97 [.550]	11	16.36 [.644]	12		5-104196-3
—		1.27 [.050]	8.89 [.350]	11.43 [.450]	9	13.82 [.544]	10		5-104196-2
—		—	—	—		—	—	<div>5</div>	5-104196-1
FINISH		F	E	D	C	B	A	NO OF POSN	PART NUMBER

<div>4</div>	—	2.54 [.100]	—	5.08 [.200]	4	7.47 [.294]	5		2-104196-8	
	17.15 [.675]	1.27 [.050]	34.29 [1.350]	36.83 [1.450]	29	39.22 [1.544]	30	<div>5</div>	2-104196-7	
	—	1.27 [.050]	27.94 [1.100]	30.48 [1.200]	24	32.87 [1.294]	25	<div>5</div>	2-104196-6	
	—	1.27 [.050]	21.59 [.850]	24.13 [.950]	19	26.52 [1.044]	20	<div>5</div>	2-104196-5	
	—	1.27 [.050]	15.24 [.600]	17.78 [.700]	14	20.17 [.794]	15	<div>5</div>	2-104196-4	
	—	1.27 [.050]	11.43 [.450]	13.97 [.550]	11	16.36 [.644]	12	<div>5</div>	2-104196-3	
	—	1.27 [.050]	8.89 [.350]	11.43 [.450]	9	13.82 [.544]	10	<div>5</div>	2-104196-2	
	—	—	—	—		—	—	<div>5</div>	2-104196-1	
	<div>1</div>	—	2.54 [.100]	—	5.08 [.200]	4	7.47 [.294]	5	<div>8</div>	104196-8
		17.15 [.675]	1.27 [.050]	34.29 [1.350]	36.83 [1.450]	29	39.22 [1.544]	30	<div>8</div>	104196-7
		—	1.27 [.050]	27.94 [1.100]	30.48 [1.200]	24	32.87 [1.294]	25	<div>8</div>	104196-6
		—	1.27 [.050]	21.59 [.850]	24.13 [.950]	19	26.52 [1.044]	20		104196-5
—		1.27 [.050]	15.24 [.600]	17.78 [.700]	14	20.17 [.794]	15	<div>6</div>	104196-4	
—		1.27 [.050]	11.43 [.450]	13.97 [.550]	11	16.36 [.644]	12	<div>8</div>	104196-3	
—		1.27 [.050]	8.89 [.350]	11.43 [.450]	9	13.82 [.544]	10	<div>7</div>	104196-2	
—		—	—	—		—	—	<div>8</div>	104196-1	
FINISH		F	E	D	C	B	A	NO OF POSN	PART NUMBER	

4805 (3/11)

THIS DRAWING IS A CONTROLLED DOCUMENT.

DIMENSIONS:  
mm [INCHES]

0 PLC  
1 PLC  
2 PLC  
3 PLC  
4 PLC  
ANGLES

± -  
± -  
± -  
± -  
± -  
± - ± -

TOLERANCES UNLESS  
OTHERWISE SPECIFIED:

SEE TABLE

MATERIAL

DWN  
D.CLOUSER

CHK  
T.ZOLA

APVD  
C.SNYDER

PRODUCT SPEC  
108-1093

APPLICATION SPEC  
114-25031

WEIGHT  
—

CUSTOMER DRAWING

DWN  
D.CLOUSER

CHK  
T.ZOLA

APVD  
C.SNYDER

NAME

SIZE  
A1

CAGE CODE  
00779

DRAWING NO  
104196

RESTRICTED TO  
—

TE Connectivity

RECEPTACLE ASSEMBLY,  
RIGHT ANGLE, SINGLE ROW,  
AMPMODU® SYSTEM 50

SCALE  
5:1

SHEET  
2

OF  
2

REV  
K

# Mouser Electronics

Authorized Distributor

Click to View Pricing, Inventory, Delivery & Lifecycle Information:

[TE Connectivity:](#)

[104196-5](#)