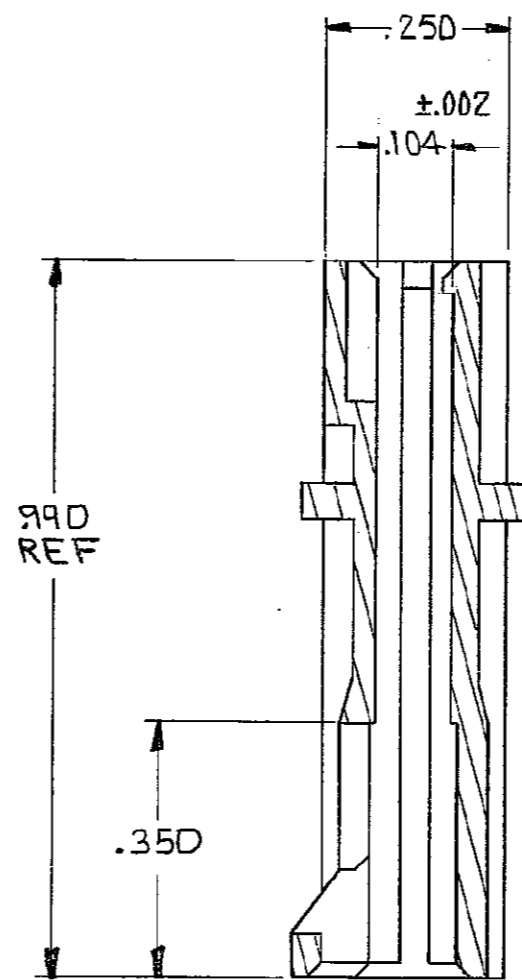
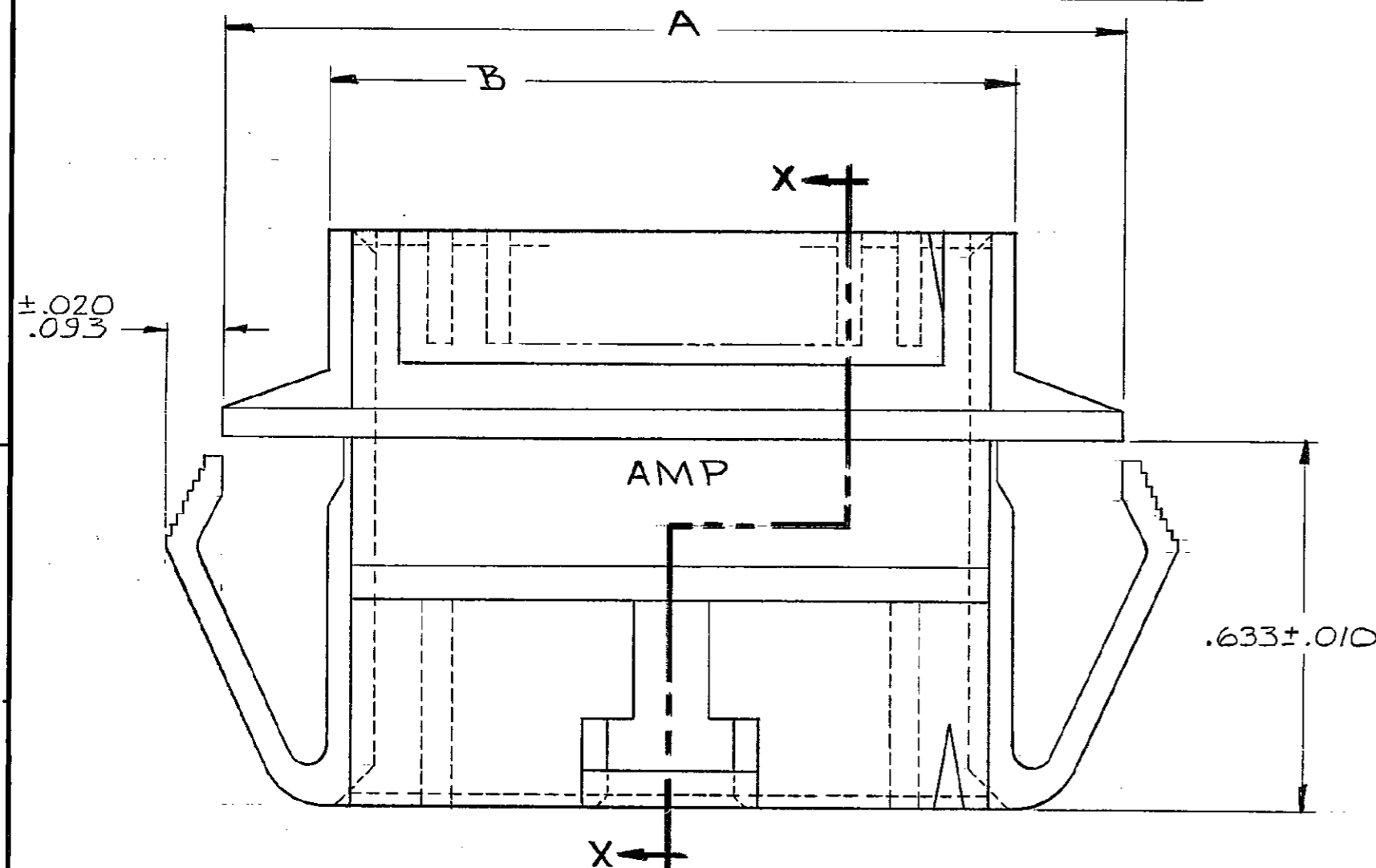


THIS DRAWING IS UNPUBLISHED. RELEASED FOR PUBLICATION

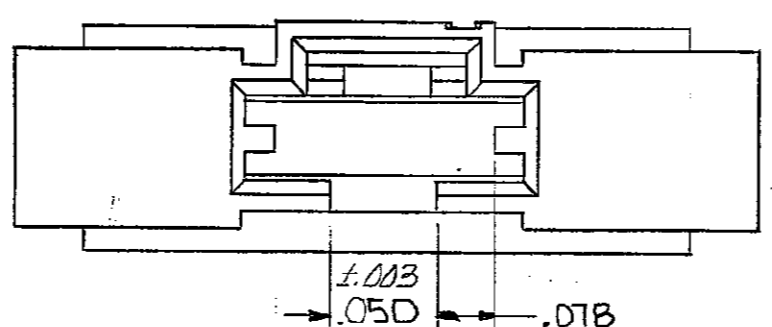
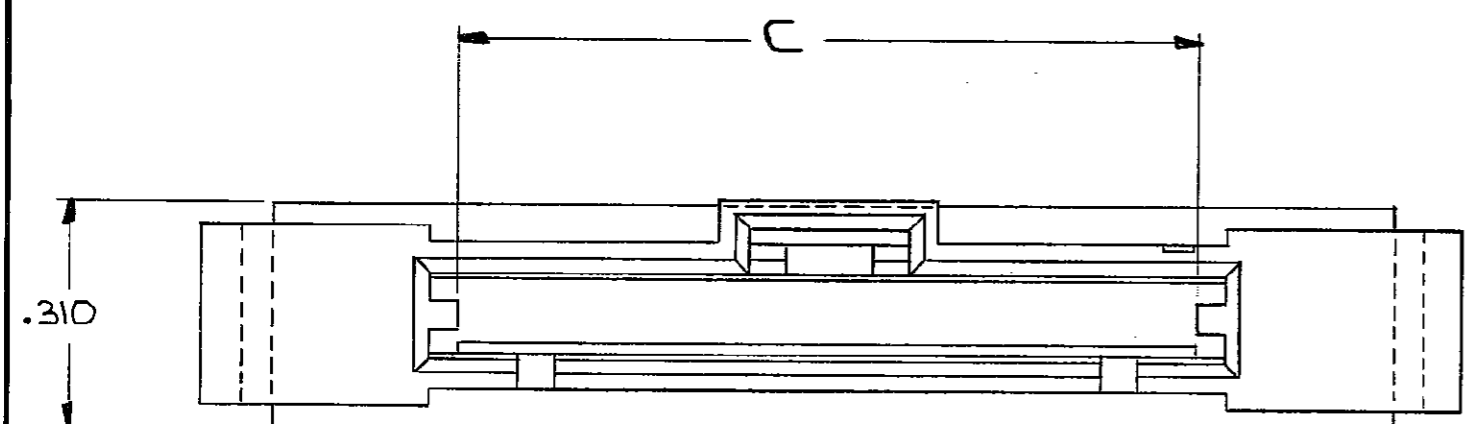
© COPYRIGHT

REVISIONS						
P	F	ZONE	LTR	DESCRIPTION	DATE	APPROVED
		G2		REVISED PER ECO-11-005140	30MAR11	HMR

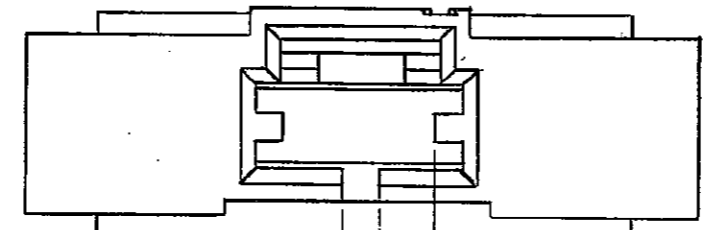


- 1. SHROUD ACCEPTS RIBBED PIN ASSEMBLIES
- 2. SHROUD MATES WITH LATCHING RECEPTACLE ASSEMBLIES
- 3. OBSOLETE PARTS: OBSOLETE CIS STREAMLINING PER D.RENAUD/D.SINISI

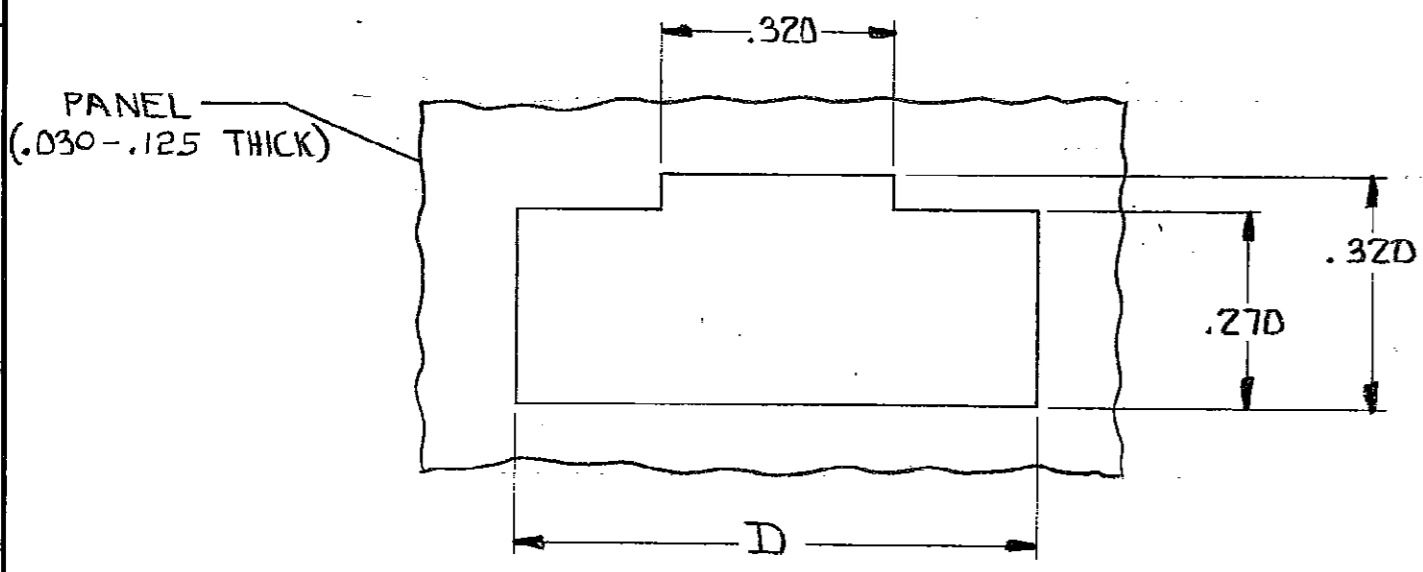
SECTION X-X



DETAIL FOR -2 ONLY (3 POSITION)



DETAIL FOR -1 ONLY (2 POSITION)



RECOMMENDED PANEL CUTOUT

3	OBSOLETE	2.925	2.505	2.665	3.035	25	2-103682-4
		2.825	2.405	2.565	2.935	24	2- -3
	OBSOLETE	2.725	2.305	2.465	2.835	23	2- -2
	3	2.625	2.205	2.365	2.735	22	2- -1
		2.525	2.105	2.265	2.635	21	2- -0
		2.425	2.005	2.165	2.535	20	1- -9
		2.325	1.905	2.065	2.435	19	1- -8
	OBSOLETE	2.225	1.805	1.965	2.335	18	1- -7
	3	2.125	1.705	1.865	2.235	17	1- -6
		2.025	1.605	1.765	2.135	16	1- -5
	OBSOLETE	1.925	1.505	1.665	2.035	15	1- -4
		1.825	1.405	1.565	1.935	14	1- -3
		1.725	1.305	1.465	1.835	13	1- -2
		1.625	1.205	1.365	1.735	12	1- -1
	OBSOLETE	1.525	1.105	1.265	1.635	11	1- -0
		1.425	1.005	1.165	1.535	10	-9
		1.325	.905	1.065	1.435	9	-8
		1.225	.805	.965	1.335	8	-7
		1.125	.705	.865	1.235	7	-6
		1.025	.605	.765	1.135	6	-5
		.925	.505	.665	1.035	5	-4
		.825	.405	.565	.935	4	-3
		.725	.305	.465	.835	3	-2
		.625	.205	.365	.735	2	103682-1

103682

UNLESS OTHERWISE SPECIFIED DIMENSIONS ARE IN INCHES. TOLERANCES ON: DECIMALS ±.005 ANGLES ±	CONTRACT NO	TE Connectivity NAME SHROUD, PIN, PANEL MOUNT, AMPMODU MTE, SINGLE RDIV, .100 Ø		
	DR <i>[Signature]</i> 5/23/85			
MATERIAL BLACK THERMOPLASTIC	CHK <i>[Signature]</i> 5/29/85	SIZE	FSCM NO	DRAWING NO
	APPD <i>[Signature]</i> 5/29/85	C	00779	103682
FINISH	OSGN APPD	SCALE	SHEET	
	OTHER APPD			

Mouser Electronics

Authorized Distributor

Click to View Pricing, Inventory, Delivery & Lifecycle Information:

[TE Connectivity:](#)

[103682-6](#)