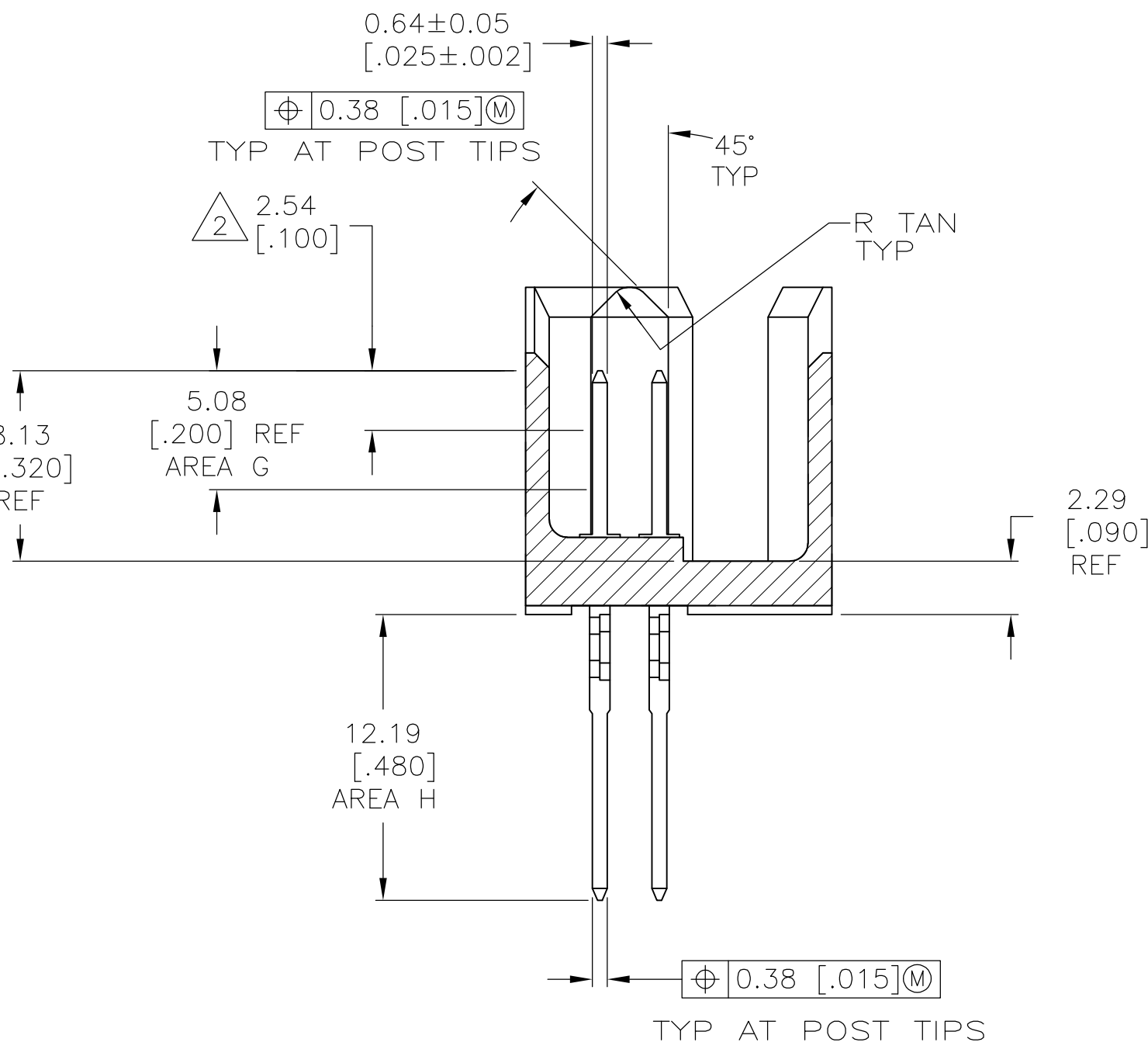
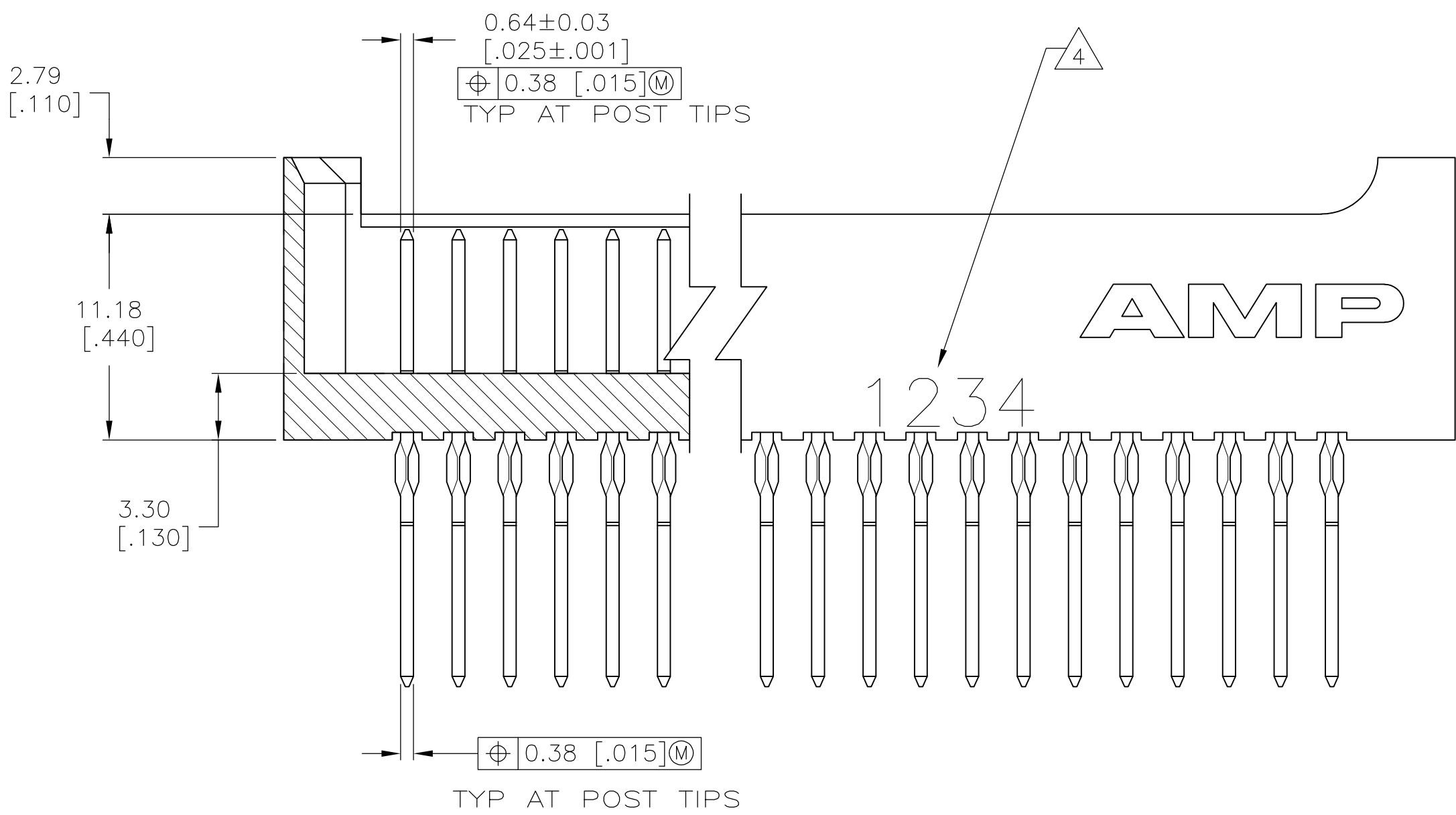
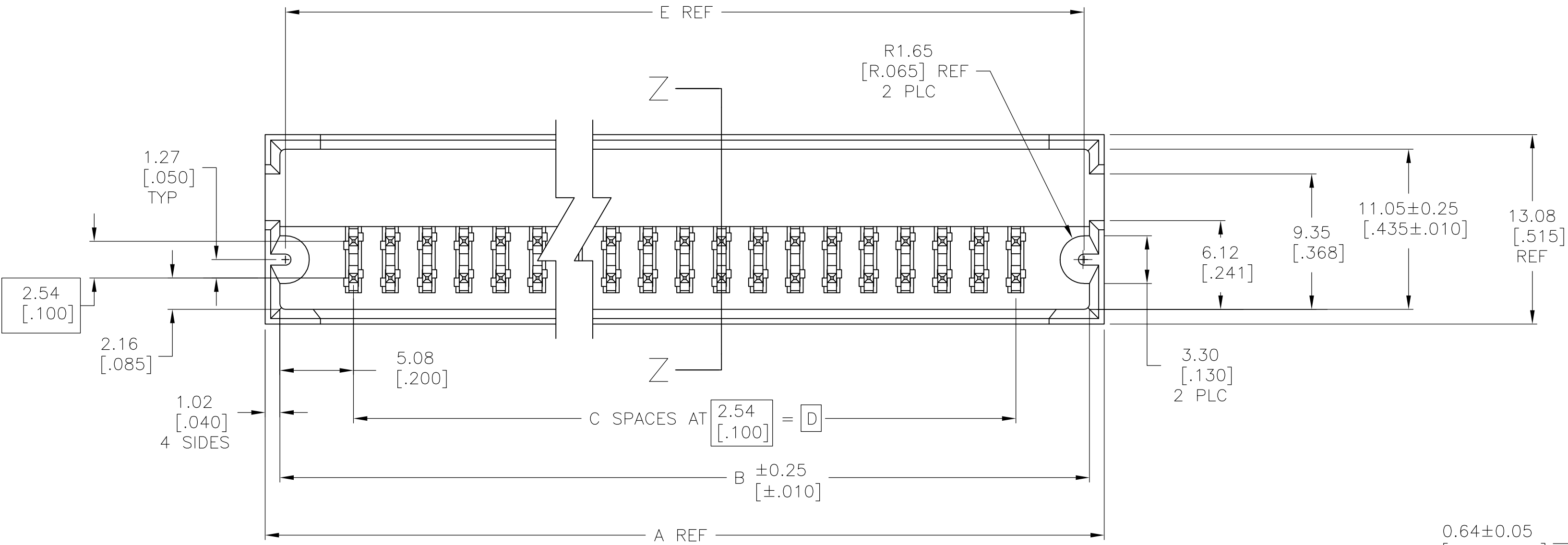
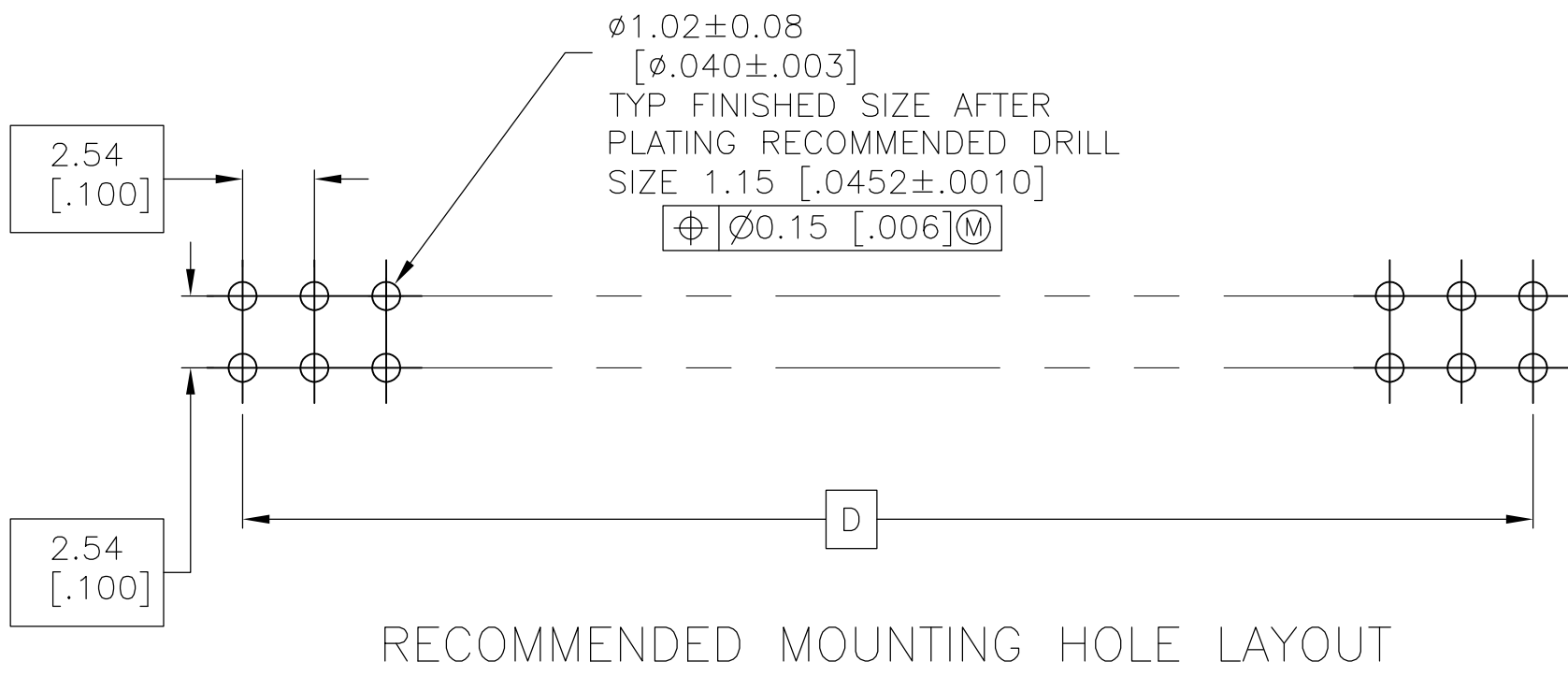


LOC	DIST	REVISIONS					
		P	LTR	DESCRIPTION	DATE	DWN	APVD
—	—		G2	ECO-07-016583	11DEC07	MB	JO

- 1
- HOUSING: FLAME RETARDANT THERMOPLASTIC; COLOR: BLACK.
POST: COPPER ALLOY.
- 2
- POINT OF MEASUREMENT FOR PLATING THICKNESS.
- 3
- DUPLEX PLATING: 0.00076 [.000030] GOLD IN AREA G,
0.00254-0.00508[.000100-.000200] BRIGHT TIN-LEAD IN AREA H,
ALL OVER 0.00127 [.000050] NICKEL.
- 4
- RECESSED DATE CODE AND CSA LOGO.
- 5
- DUPLEX PLATING: 0.00076 [.000030] GOLD IN AREA G,
0.00254-0.00508[.000100-.000200] BRIGHT TIN-LEAD IN AREA H,
ALL OVER 0.00127 [.000050] NICKEL.
- 6
- ROHS 2002/95/EC COMPLIANT



SECTION Z-Z
ROTATED 90° CW



THIS DRAWING IS A CONTROLLED DOCUMENT.		DWN K.L.CLOUSER/UTA CHK D. SARVER	4/22/91 6-19-91	Tyco Electronics Tyco Electronics Corporation Harrisburg, PA 17105-3608	
DIMENSIONS: mm	TOLERANCES UNLESS OTHERWISE SPECIFIED:	NAME	PRODUCT SPEC	SIZE	CAGE CODE
Ø	0 PLC ± - 1 PLC ± - 2 PLC ± 0.13 [.005] 3 PLC ± - 4 PLC ± - ANGLES ± -	APPLICATION SPEC	APPLICATION SPEC	100779	102691
MATERIAL	FINISH SEE TABLE	WEIGHT	RESTRICTED TO	SCALE	SHEET
1		CUSTOMER DRAWING		4:1	1 OF 2

LOC	DIST	REVISIONS					
		P	LTR	DESCRIPTION	DATE	DWN	APVD
—	—		—	SEE SHEET 1	—	—	—

OBSOLETE	<div>5</div>	210.06 [8.270]	200.66 [7.900]	79	210.82 [8.300]	212.85 [8.380]	160	<div>6</div>	7-102691-8
		194.82 [7.670]	185.42 [7.300]	73	195.58 [7.700]	197.61 [7.780]	148	<div>6</div>	7-102691-7
		169.42 [6.670]	160.02 [6.300]	63	170.18 [6.700]	172.21 [6.780]	128	<div>6</div>	7-102691-6
		62.74 [2.470]	53.34 [2.100]	21	63.50 [2.500]	65.53 [2.580]	44	<div>6</div>	7-102691-5
		24.64 [.970]	15.24 [.600]	6	25.40 [1.000]	27.43 [1.080]	14	<div>6</div>	7-102691-4
		235.46 [9.270]	226.06 [8.900]	89	236.22 [9.300]	238.25 [9.380]	180	<div>6</div>	7-102691-3
		126.24 [4.970]	116.84 [4.600]	46	127.00 [5.000]	129.03 [5.080]	94	<div>6</div>	7-102691-2
		260.86 [10.270]	251.46 [9.900]	99	261.62 [10.300]	263.65 [10.380]	200	<div>6</div>	7-102691-1
								<div>6</div>	7-102691-0
								<div>6</div>	6-102691-9
								<div>6</div>	6-102691-8
								<div>6</div>	6-102691-7
								<div>6</div>	6-102691-6
							<div>6</div>	6-102691-5	
						</			

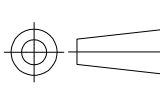
OBSOLETE	△3	210.06 [8.270]	200.66 [7.900]	79	210.82 [8.300]	212.85 [8.380]	160	2-102691-8
		194.82 [7.670]	185.42 [7.300]	73	195.58 [7.700]	197.61 [7.780]	148	2-102691-7
		169.42 [6.670]	160.02 [6.300]	63	170.18 [6.700]	172.21 [6.780]	128	2-102691-6
		62.74 [2.470]	53.34 [2.100]	21	63.50 [2.500]	65.53 [2.580]	44	2-102691-5
		24.64 [.970]	15.24 [.600]	6	25.40 [1.000]	27.43 [1.080]	14	2-102691-4
		235.46 [9.270]	226.06 [8.900]	89	236.22 [9.300]	238.25 [9.380]	180	2-102691-3
		126.24 [4.970]	116.84 [4.600]	46	127.00 [5.000]	129.03 [5.080]	94	2-102691-2
		260.86 [10.270]	251.46 [9.900]	99	261.62 [10.300]	263.65 [10.380]	200	2-102691-1
								2-102691-0
								1-102691-9
								1-102691-8
								1-102691-7
								1-102691-6
								1-102691-5

THIS DRAWING IS A CONTROLLED DOCUMENT.

DWN
K. L. CLOUSER/UTA
CHK
D. SARVER
APVD

4/2/91
6-19-91

DIMENSIONS:
mm



TOLERANCES UNLESS OTHERWISE SPECIFIED:

0. PLC ± -
1. PLC ± -
2. PLC ± 0.13 [.005]
3. PLC ± -
4. PLC ± -
ANGLES ± -

PRODUCT SPEC
—
APPLICATION SPEC
—
WEIGHT —

SIZE
A1

CAGE CODE
00779

DRAWING NO
102691

RESTRICTED TO
—

TYCO ELECTRONICS CORPORATION
HARRISBURG, PA 17105-3608

HEADER ASSY, MOD II, DOUBLE ROW,
2.54 X 2.54 [.100 X .100]CL, .025 SQ COMPLIANT
PIN POST, FOR .093 NOM AND THICKER BOARDS

CUSTOMER DRAWING

SCALE 4:1

SHEET 2 OF 2

REV G2

Mouser Electronics

Authorized Distributor

Click to View Pricing, Inventory, Delivery & Lifecycle Information:

[TE Connectivity:](#)

[102691-9](#)