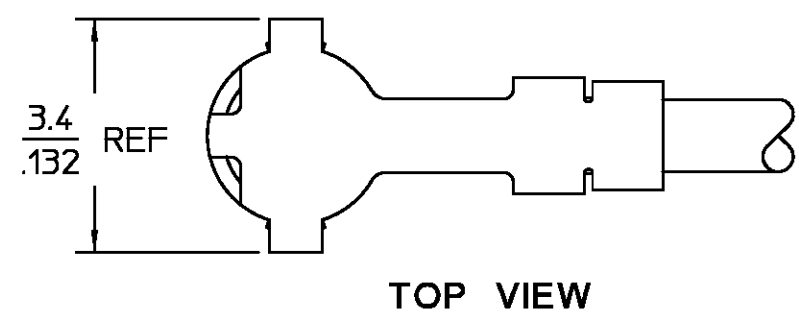


REVISIONS			
REV	DESCRIPTION	DATE	APPROVED
01 <sub>0</sub>	RELEASED	3/25/98	<i>[Signature]</i>
01 <sub>1</sub>	REVISED PER ECN 99-0001	DM 5/20/99	<i>S. Mobley</i>



XX.X = mm  
.XXX = in (REF)

NOTES:  
1. CONNECTOR CENTERLINES SHALL BE 180° ± 30° APART AS SHOWN.

ELECTRICAL

Frequency	DC - 6 GHz
Nominal Impedance	50 ohms
Voltage Rating	250 Volts (VRMS Max.) @ Sea Level
VSWR	1.20:1 Max. @ 2GHz 1.40:1 Max. @ 6GHz
Insulation Resistance	1,000 Megohms Minimum @ 250VDC
Dielectric Withstanding Voltage	500 Volts (VRMS Minimum) @ Sea Level

MECHANICAL

Connector Durability 100 mating cycles

ENVIRONMENTAL

Temperature Rating -40°C (-40°F) To +125°C (257°F)

COMPONENT	MATERIAL	FINISH
CONNECTOR: INNER & OUTER CONTACTS	BERYLLIUM COPPER ALLOY CDA172	GOLD PLATE OVER NICKEL PLATE
DIELECTRIC	POLYPROPYLENE, GF	N/A
CABLE: JACKET	FEP FLUOROCARBON PER ASTM-D2116	N/A
SHIELD	COPPER WIRE, 44AWG	SILVER PLATED
DIELECTRIC	PTFE FLUOROCARBON PER ASTM-D1457	N/A
CENTER CONDUCTOR	COPPER CLAD STEEL, 30AWG	SILVER PLATED

UNLESS OTHERWISE SPECIFIED DIMENSIONS ARE IN INCHES		DRAWN BY <i>[Signature]</i> DATE 3/23/98		AMP Incorporated	
TOLERANCE ON		CHECKED BY		140 Fourth Avenue	
FRAC	DEC	ANGLES	APPD BY <i>[Signature]</i> 3/25/98	Waltham, MA 02451-7599	
* 1/64	* .005	* 1°	TITLE		
These drawings and specifications are the property of AMP Incorporated and shall not be reproduced or copied or used in whole or in part as the basis for the manufacture or sale of item(s) without written permission.			SSMT RIGHT ANGLE JACK TO JACK CABLE ASSEMBLY (180° OFFSET)		
USE ASSY PROCEDURE		SIZE	CODE IDENT NO.	REV	
NO. A.P. N/A		B	26805	01 <sub>1</sub>	
		SCALE 10:1	9960-3100-24	SHEET 1 OF 1	

CUSTOMER DRAWING

AMP PART # 1082845-1  
SHEET 1 OF 1 REV A

OUTLINE, -50 AND B/M MUST CARRY THE SAME MAJOR REVISION LEVEL

# Mouser Electronics

Authorized Distributor

Click to View Pricing, Inventory, Delivery & Lifecycle Information:

[TE Connectivity:](#)

[1082845-1](#)