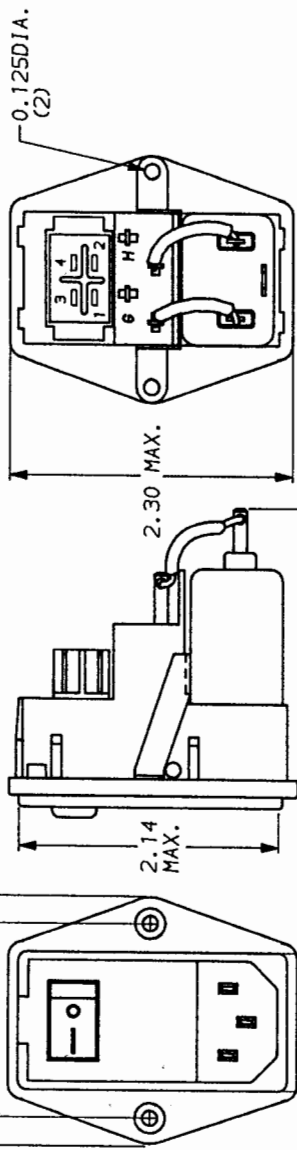
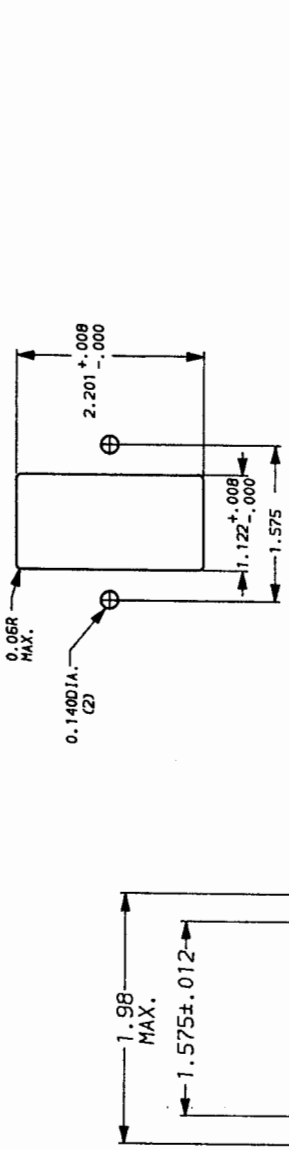


**RECOMMENDED PANEL CUTOUT**  
(NOT TO SCALE)



NOTE: ALL BACKPLATE TERMINALS ARE .110 FASTONS EXCEPT SWITCH TERMINALS WHICH ARE .187 FASTONS.

**SAFETY ORGANIZATION(S).**  
THIS FILTER HAS BEEN FORMALLY RECOGNIZED, CERTIFIED OR APPROVED BY THE LISTED AGENCY. THEREFORE, ALL TEST/REQUIREMENTS SPECIFIED IN THE LATEST REVISION OF THE FOLLOWING AGENCY STANDARDS HAVE BEEN MET.

- UL 1283, 544
- CSA 22.2, NO. 0.0.4, 8
- VDE 565-3, 625

**OPERATING SPECIFICATIONS.**  
LINE VOLTAGE/CURRENT.

- 6 AMP., 120/250 VAC
- 6 AMP./40°C, 250 VAC
- 50-60Hz
- 2µA @ 120V 60Hz
- 5µA @ 250V 50Hz
- 10°C TO +40°C @ RATED CURRENT, I<sub>r</sub>

IN AN AMBIENT, T<sub>a</sub>, HIGHER THAN 40°C, THE MAXIMUM OPERATING CURRENT, I<sub>o</sub>, IS AS FOLLOWS:

$$I_o = I_r \sqrt{\frac{85 - T_a}{45}}$$

**RELIABILITY SPECIFICATIONS.**  
STORAGE TEMPERATURE.

- 25°C TO +85°C
- 21 DAYS @ 40°C 95% RH
- 6 TIMES RATED CURRENT FOR 8 SECONDS

**TEST SPECIFICATIONS.**  
INDUCTANCE.

- .52mH NOMINAL
- CAPACITANCE, (MEASURED @ 1 KHz, 0.25 VAC MAX., 25°C ± 1°C)
- .047µF ± 20%

- DISCHARGE RESISTOR, 1.5 MΩ
- LINE/GROUND AND LINE/LINE INSULATION RESISTANCE 6000 MΩ (MIN) AT 100 VDC
- (W/O DISCHARGE RESISTOR) 20°C AND 50% RH

**RECOMMENDED RECEIVING INSPECTION HIPOT.**

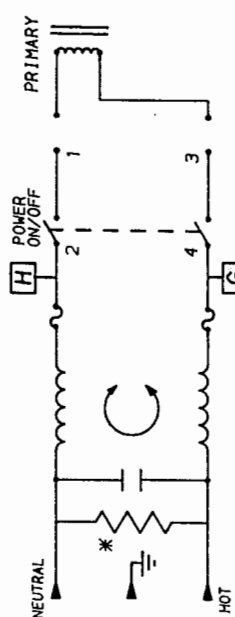
- 2250 VDC FOR 1 MINUTE
- 1450 VDC FOR 1 MINUTE

**FILTER APPROVAL:**  
THE BEST WAY TO SELECT AND QUALIFY A FILTER IS FOR YOUR ENGINEERING TO TEST THE UNIT IN YOUR EQUIPMENT.

TOLERANCE EXCEPT AS NOTED  
DECIMAL: .XXX .XX .X ANGLES  
ENGLISH: ±.025  
METRIC: ±

FREQUENCY MHz	.05	.15	.50	1.0	2.0	5.0	10	30
COMMON	3	8	13	15	16	18	18	18
DIFF. dB	1	4	14	20	25	32	38	42

50Ω - 50Ω (MINIMUM) INSERTION LOSS  
This document is proprietary to CORCOM INC. and is not to be reproduced nor used for manufacturing purposes except on CORCOM's order or prior written consent.



NOTE, JUMPER "H" TO 2 AND "G" TO 4.

\*RESISTOR ADDED TO PRODUCT BUILT AFTER 3-30-92 (9212).

**corcom**  
LIBERTYVILLE, IL 60048

**POWER LINE FILTER**

SCALE: NTS DATE: 8-31-90 DRG. NO.: GEHL1SM.02  
REV. BY: CFW ORIGINATOR: CFW

# Mouser Electronics

Authorized Distributor

Click to View Pricing, Inventory, Delivery & Lifecycle Information:

[TE Connectivity:](#)

[6EHL1SM](#)