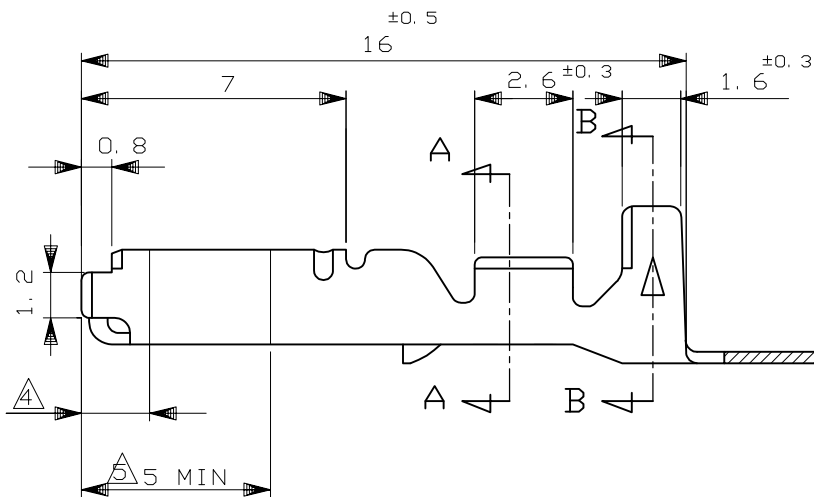
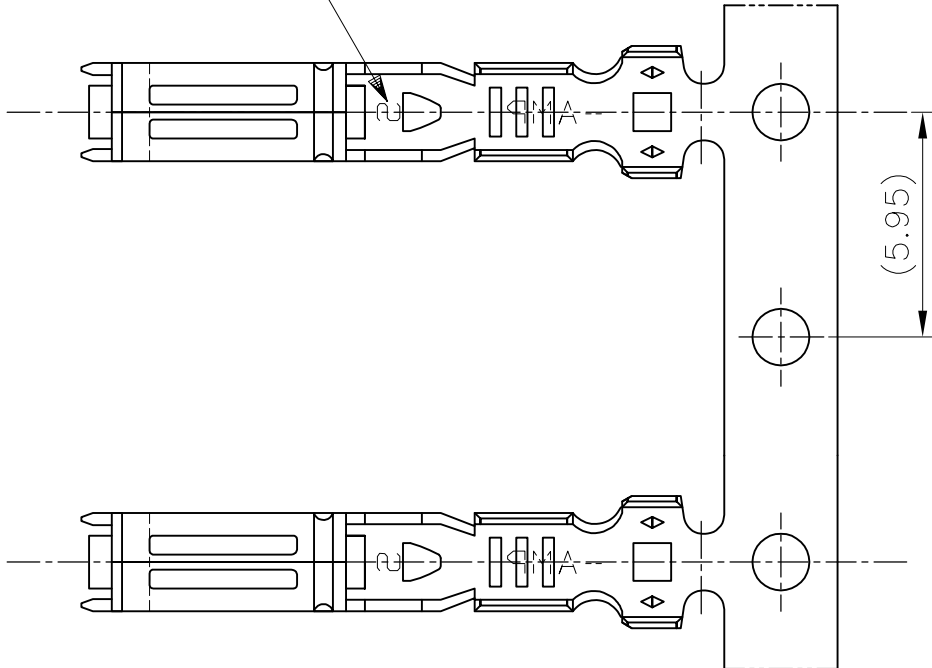
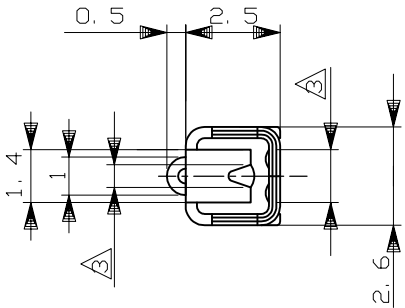
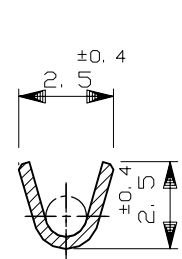


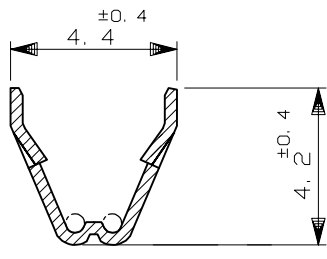
WIRE RANGE ID MARK
<"S" SIZE MARK>
<STAMPED ON BOTTOM>
端子識別マーク"S"
(底面に刻印)



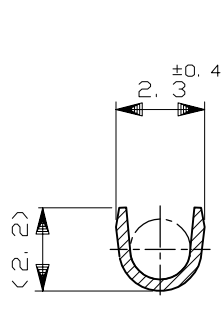
REVISIONS					
P	LTR	DESCRIPTION		DATE	APVD
	G1	REVISED	ECR-19-018615	17JUL2020	DM HK



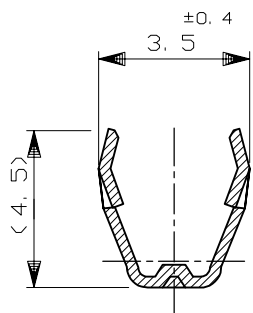
断面 A-A
SECT A-A



断面 B-B
SECT B-B



断面 A-A
SECT A-A
(175026のみ適用)
(ONLY 175026)



断面 B-B
SECT B-B
(175026のみ適用)
(ONLY 175026)


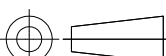
- 製品規格 ; 108-5216, 108-5231, 108-5264
- 取付適用規格 ; 114-5091
- 部分金めっき (接触面のみ)
- 識別用金めっき (全周)
- 部分金めっき (両側のみ)

- SPEC; 108-5216, 108-5231, 108-5264
- APPLICATION SPEC; 114-5091
- SELECTIVE GOLD PLATING (ONLY CONTACT SIDE)
- GOLD PLATING FOR DISCERNMENT (ALL AROUND)
- SELECTIVE GOLD PLATING (ONLY BOTH SIDES OF THE BOX)

TOLERANCE UNLESS OTHERWISE SPECIFIED: 一般公差	
0<=x<= 10	: ±0.2
10<=x<= 30	: ±0.25
30<=x<= 100	: ±0.3
ANGLE	: ±3°

WIRE RANGE
AVS 0.2~0.3mm²
(AWG#24-#22)

INSULATION DIA.
1.4~1.9 mmφ

THIS DRAWING IS A CONTROLLED DOCUMENT.		DWN T.SAGAWA 9/28'87	<div> TE Connectivity</div>				
		CHK M.MATSUSAKA 10/6'87					
DIMENSIONS: mm	<div>TOLERANCES UNLESS OTHERWISE SPECIFIED:</div> <div><div>0 PLC ± -</div><div>1 PLC ± -</div><div>2 PLC ± -</div><div>3 PLC ± -</div><div>4 PLC ± -</div><div>ANGLES ± -</div></div>	APVD M.NOGUCHI 10/7'87	NAME				
		PRODUCT SPEC —	070 SERIES RECEPTACLE CONTACT				
		APPLICATION SPEC —					
MATERIAL SEE TABLE		FINISH SEE TABLE	WEIGHT —	SIZE A3	CAGE CODE 00779	DRAWING NO C-173630	RESTRICTED TO —
CUSTOMER DRAWING			SCALE 5:1	SHEET 1 OF 1	REV G1		

Mouser Electronics

Authorized Distributor

Click to View Pricing, Inventory, Delivery & Lifecycle Information:

[TE Connectivity:](#)

[175026-1](#)