

PART NUMBER	REVISION	DESCRIPTION	FEED TYPE
2151030-1	G	FINE CRIMP HEIGHT ADJUST	MECHANICAL
2151030-2	H	FINE CRIMP HEIGHT ADJUST	PNEUMATIC
5-2151030-1	G	SEAL STRIPPER CRIMPER TERMINATING UNIT	MECHANICAL
5-2151030-2	H	SEAL STRIPPER CRIMPER TERMINATING UNIT	PNEUMATIC
7-2151030-1	G	MECHANICAL AND CRIMP TOOLING KIT	MECHANICAL
7-2151030-2	H	PNEUMATIC AND CRIMP TOOLING KIT	PNEUMATIC
7-2151030-7	C	CRIMP TOOLING KIT	-

ATLANTIC VERSION TERMINATOR INTERFACE ADAPTER



APPLICATOR DATA		
CRIMP	SIZE	TYPE
WIRE	1.57 mm [.062]	F
INSUL	2.79 mm [.110]	F

APPLICATOR INSTRUCTIONS
408-35042

TERMINAL DATA: TE TERMINAL TE CRIMP SPECIFICATION					
TERMINAL NAME: MINI UNIVERSAL MATE-N-LOK					
WIRE STRIP LENGTH	INSULATION DIAMETER RANGE				
3.20-3.70 mm [.126-.146 IN]	-				
TERMINAL APPLICATION SPECIFICATION	(A)114-16017	(A)114-13089	-		
	(B)114-5050	-	-		
TERMINALS APPLIED					
TE TERMINAL	TE TERMINAL	TE TERMINAL	TE TERMINAL	TERM PART NO	INSULATION RANGE
(A) 770903-1	(A) 770904-1	(A) 794137-1	(B) 170360-6	770903	1.5-2.4 mm
(A) 770903-2	(A) 770904-2	(A) 794137-2	(B) 170362-1	770904	
(A) 770903-3	(A) 770904-3	(A) 794137-3	(B) 170362-2	170362	
(A) 770903-4	(A) 770904-4	(A) 1-794137-0	(B) 170362-3	170360	
(A) 770903-5	(A) 770904-5	(B) 170360-1	(B) 170362-4	794137	1.5-2.8 mm
(A) 770903-6	(A) 770904-6	(B) 170360-2	(B) 170362-6		
(A) 1-770903-0	(A) 1-770904-0	(B) 170360-3	(B) 1-170362-3		
(A) 1-770903-1	(A) 1-770904-1	(B) 170360-4			

WIRE SIZE	CRIMP HEIGHT mm [INCH]	CRIMP HEIGHT REFERENCE SETTING
18 AWG	1.07 +/- 0.05 [.042 +/- .002]	6.7
0.75mm2	1.04 +/- 0.05 [.041 +/- .002]	7.0
20 AWG OR 0.50mm2	0.91 +/- 0.05 [.036 +/- .002]	8.5
2 X 22 AWG	0.91 +/- 0.05 [.036 +/- .002]	8.5
22 AWG OR 0.35mm2	0.81 +/- 0.05 [.032 +/- .002]	9.5

***WARNING**
ON INSTALLATION, SET WIRE DISC TO CRIMP HEIGHT REFERENCE SETTING FOR LARGEST WIRE SIZE. CRIMP HEIGHT REFERENCE SETTINGS GREATER THAN THE VALUE SHOWN MAY CAUSE DAMAGE TO THE CRIMP TOOLING, REFER TO THE INSTRUCTION SHEET FOR PROPER SETUP AND ADJUSTMENTS.

- 1 RECOMMENDED SPARE PARTS
- 2 REFER TO SUPPLIED INSTRUCTION SHEET FOR CLEANING, LUBRICATION AND STORAGE OF APPLICATOR.
- 3 APPLY PART NUMBER 1-23419-5 LOCTITE TO THREADS OF ITEMS 180. APPLY PART NUMBER 2-23419-6 LOCTITE TO THREADS OF ITEM 242.
- 4 CRIMP HEIGHT REFERENCE SETTING WAS THE SETTING USED WHEN THE APPLICATOR WAS QUALIFIED AT THE FACTORY. ADJUSTMENT MAY BE NECESSARY WHEN RUNNING APPLICATOR IN THE FIELD.
- 5 TERMINAL LUBRICANT IS RECOMMENDED.
- 6 114-13089 TERMINAL SPECIFICATION IS FOR SEAL APPLICATION ONLY. "F" TYPE INSULATION CRIMP SNAIL CAM SETTING FOR SEAL APPLICATIONS WILL DIFFER TO THAT OF UNSEALED APPLICATIONS
- 7. UNLESS SPECIFIED OTHERWISE TORQUE VALUES SHALL BE USED PER DOCUMENT, 101-35000.

LOC	DIST	REVISIONS			
A	66	REV	DATE	BY	CHKD
		E	19JUN2017	MP	JD
		F	17APR2018	JAH	JDG
		G	09AUG2018	KH	GB
		H	12APR2019	FJ	TE

-	-	-	1	1	-	-	1803515-3	RAM ASSEMBLY, SF ATLANTIC	293
-	-	-	1	1	-	-	2-1803583-1	APPLICATOR BASIC ASSEMBLY, SF	292
-	1	-	1	-	1	-	2119641-1	FEED CAM, AIR FEED	248
-	1	1	1	1	1	1	2119082-3	CAM, SNAIL, INSULATION ADJUSTMENT	244
-	1	1	1	1	1	1	2079764-1	WASHER, WAVE SPRING, CREST-TO-CREST	243
-	1	1	1	1	1	1	2119083-1	RETAINER, INSULATION DIAL	242
-	1	1	1	1	1	1	7-18023-7	SCR, SKT HD CAP M3 X 4.0	241
-	-	1	-	1	-	1	2119580-1	MECHANICAL FEED ASSEMBLY	239
-	1	-	1	-	1	-	2844940-1	AIR FEED MODULE	238
-	-	-	1	1	-	-	4-1722335-3	STRIPPER, SIDE FEED	182
-	-	-	1	1	-	-	1-5018030-0	NUT, HEX, REG, RoHS, M3.5	181
-	-	-	1	1	-	-	1-1752354-9	STANDOFF, HOLD-DOWN	180
-	-	-	1	1	-	-	993111-1	PIN, SLOTTED SPRING 3.0 X 20.0	177
-	-	-	1	1	-	-	5-22280-0	SPRING, COMPRESSION	176
-	-	-	1	1	-	-	1752353-3	GUIDE PIN, HOLDDOWN	175
-	-	-	1	1	-	-	1901680-2	GUIDE PIN, HOLDDOWN	174
-	REF	REF	REF	REF	REF	REF	994970-2	COUNTER, MAGNETIC	164
-	1	1	1	1	1	1	2119955-1	ASSY, LUBRICATOR, SIDE FEED	113
-	1	1	1	1	1	1	2844908-1	SCREW, LOCKING	99
-	1	1	1	1	1	1	2844907-1	POST, LOCKING	98
-	1	1	1	1	1	1	455888-5	SPACER, CRIMPER	82
-	1	1	1	1	1	1	1803607-3	DOCUMENTATION PACKAGE	71
-	1	1	1	1	1	1	2119740-1	TAG, IDENTIFICATION	67
-	2	2	2	2	2	2	2168078-1	SCREW, DRIVE, RH, RoHS, 2 x .188	66
-	1	1	1	1	1	1	2168083-2	SCR, SKT HD CAP, RoHS, M4 X 8.0	60
-	1	1	1	1	1	1	5-18022-5	SCR, HEX HD CAP, M4 X 6.0	59
-	1	1	1	1	1	1	1338685-1	PAWL, FEED	56
-	4	4	4	4	4	4	2168083-3	SCR, SKT HD CAP, RoHS, M4 X 12.0	54
-	2	2	2	2	2	2	2168083-3	SCR, SKT HD CAP, RoHS, M4 X 12.0	53
-	1	1	1	1	1	1	1803382-6	HOLD DOWN, SPRING LOADED	50
-	1	2	1	2	1	2	18023-9	SCR, SKT HD CAP M4 X 6.0	49
-	-	1	-	1	-	1	2119652-1	FEED CAM, PRE FEED	48
-	-	1	-	1	-	1	2119653-1	FEED CAM, POST FEED	47
-	1	1	-	-	1	1	1803583-9	APPLICATOR BASIC ASSEMBLY, SF	46
-	1	1	-	-	1	1	1803515-1	RAM ASSEMBLY, SF ATLANTIC	44
-	1	1	1	1	1	1	1803602-1	SCR, BHSC, RoHS (M8 X 25)	41
-	1	1	1	1	1	1	1752356-5	SUPPORT, TERMINAL	34
-	2	2	2	2	2	2	2079383-5	SCR, BHSC, RoHS (M4 X 20)	33
-	2	2	2	2	2	2	2-2844962-4	SPACER, CYLINDRICAL, STRIP GUIDE	30
-	1	1	1	1	1	1	2844992-1	ASSEMBLY, STRIP GUIDE	29
-	1	1	1	1	1	1	455888-3	SPACER, CRIMPER	28
-	1	1	1	1	1	1	1320928-2	STRIP GUIDE	24
-	1	1	-	-	1	1	2168083-2	SCR, SKT HD CAP, RoHS, M4 X 8.0	21
-	2	2	1	1	2	2	1-18028-2	WASHER, FLAT, REG M4	20
-	1	1	-	-	1	1	2119533-1	STRIPPER, SIDE FEED	19
-	1	1	1	1	1	1	2119806-1	INSERT, SHEAR	13
-	1	1	1	1	1	1	3-22280-3	SPRING, COMPRESSION	12
-	1	1	1	1	1	1	2-519000-1	SCR, SKT HD CAP M4 X 10.0	11
-	1	1	1	1	1	1	2119805-1	SHEAR HOLDER, FRONT	10
-	1	1	1	1	1	1	1803095-1	FLOATING SHEAR, FRONT	9
1	2	2	1	1	1	1	1338691-1	ANVIL, COMBINATION .062	8
-	1	1	1	1	1	1	3-240641-3	SPACER	7
-	1	1	1	1	1	1	2119757-4	DEPRESSOR, SHEAR	5
-	1	1	1	1	1	1	2-238011-2	BLOCK, CRIMPER SPACER	4
1	2	2	1	1	1	1	2-2119582-1	CRIMPER, INSULATION F PREMIUM	3
-	1	1	1	1	1	1	455888-1	SPACER, CRIMPER	2
1	2	2	1	1	1	1	1633860-3	CRIMPER, WIRE	1

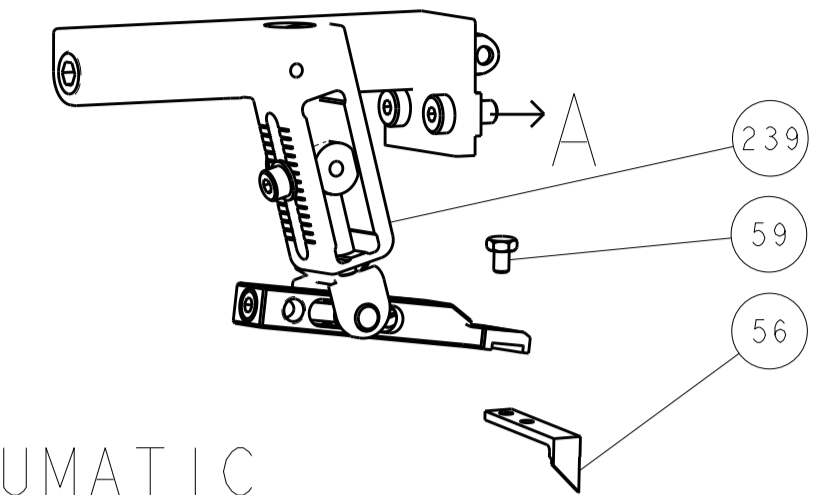
ATLANTIC VERSION
Shown on sheets 1 of 4 & 2 of 4
(Pacific version shown on sheets 3 of 4 & 4 of 4)

ITEM NO	PART NO	DESCRIPTION	ITEM NO
-77	-72	-71	-52
-51	-2	-1	

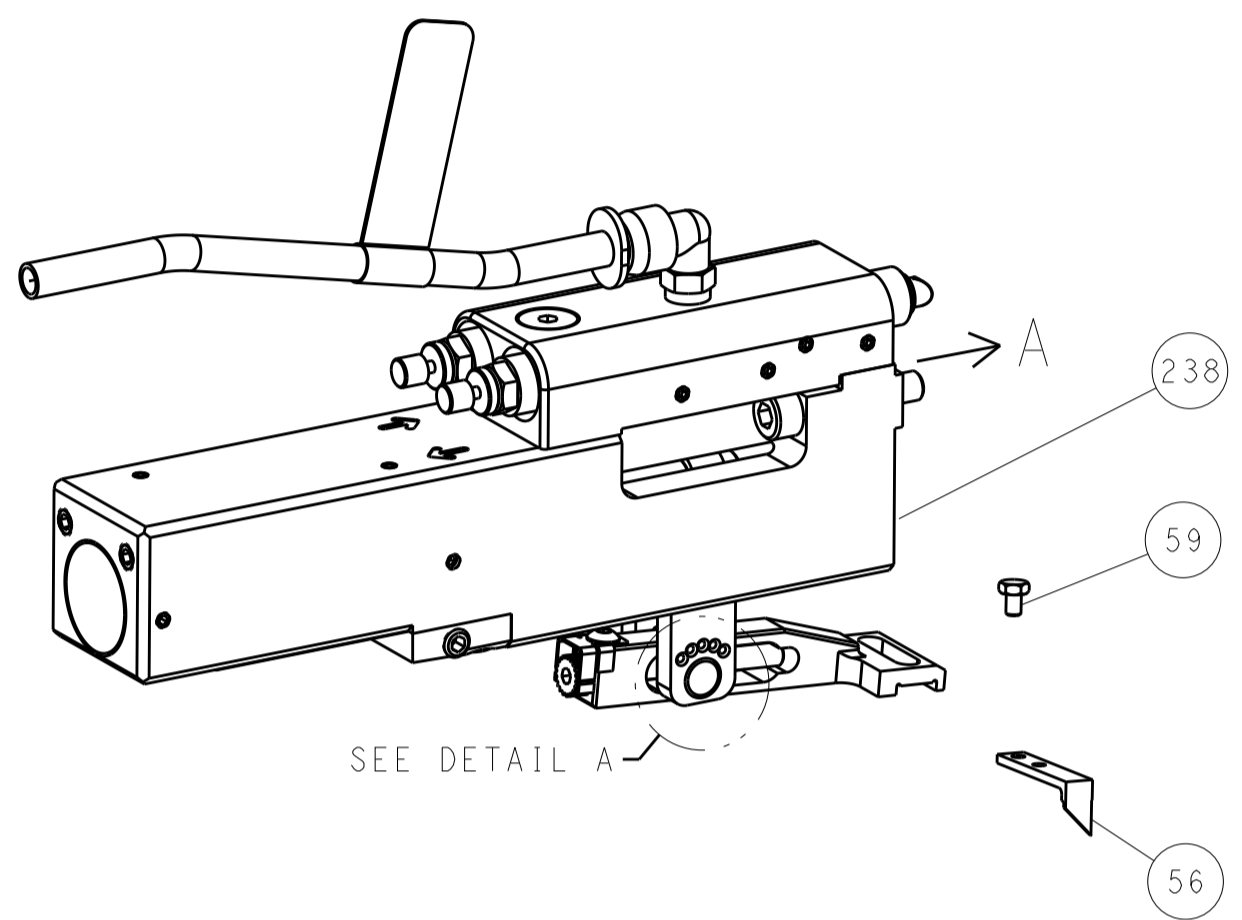
CHKD: MOYER 03NOV2011	DATE: 03NOV2011	NAME: Ocean Side Feed Applicator
CHKD: G. BAILEY	DATE: 03NOV2011	SIZE: A1
APVD: G. BAILEY	DATE: 03NOV2011	CAGE CODE: 00779
PRODUCT SPEC	APPLICATION SPEC	DRAWING NO: 2151030
MATERIAL	FINISH	SCALE: 1:2
WEIGHT	RESTRICTED TO	SHEET 1 OF 4
Customer Accessible Production Drawing	SCALE: 1:2	REV: H

LOC	DIST	REVISIONS					
		P	LTN	DESCRIPTION	DATE	DWN	APVD
A	66	-	-	SEE SHEET 1	-	-	-

FEED TYPE MECHANICAL



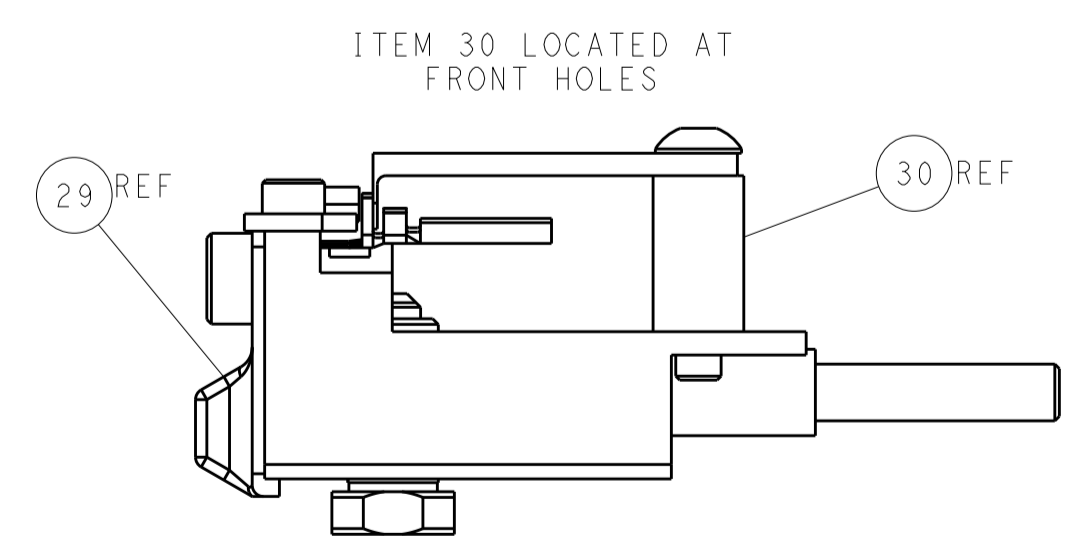
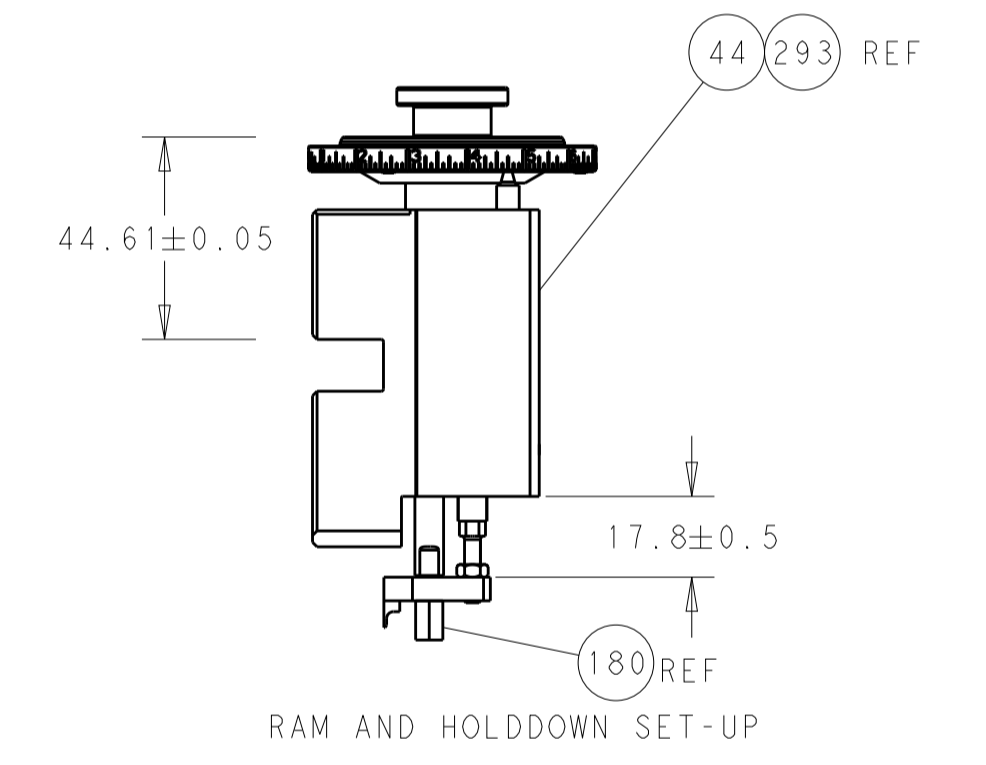
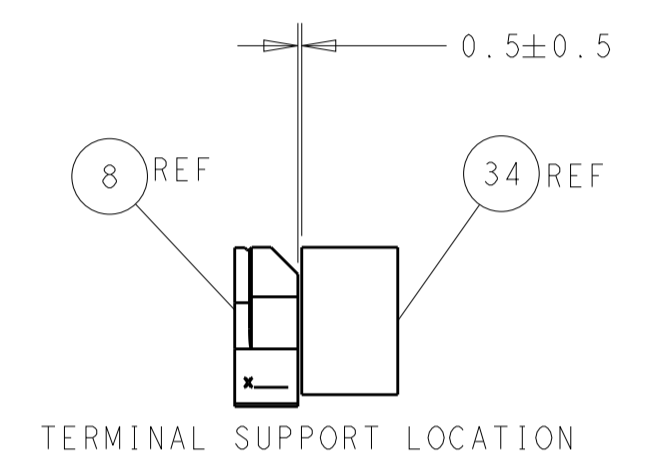
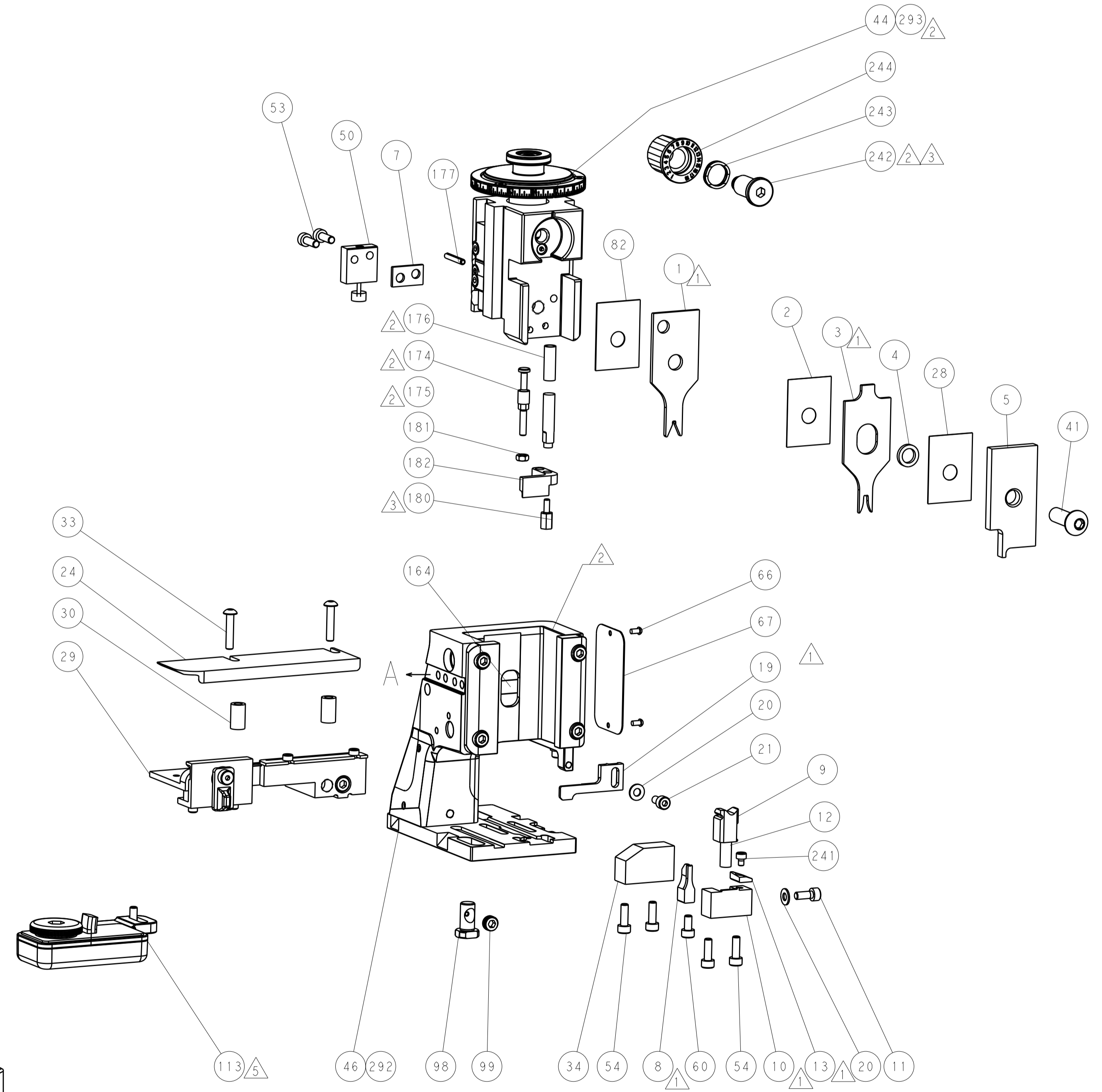
PNEUMATIC



FEED SPRING SETTING POSITION (SHOWN FROM REAR SIDE)



CAM POSITIONS



ATLANTIC VERSION
 Shown on sheets 1 of 4 & 2 of 4
 (Pacific version shown on sheets 3 of 4 & 4 of 4)

DIMENSIONS:		TOLERANCES UNLESS OTHERWISE SPECIFIED:		DWN C. MOYER 03NOV2011		TE Connectivity	
mm	0 PLC ±	1 PLC ±	2 PLC ±	3 PLC ±	4 PLC ±	Harrisburg, PA 17105-3608	
MATERIAL:		FINISH:		CHK G. BAILEY 03NOV2011		NAME Ocean Side Feed Applicator	
				APVD G. BAILEY 03NOV2011		SIZE CAGE CODE DRAWING NO RESTRICTED TO	
				PRODUCT SPEC		A1 00779 ©=2151030	
				APPLICATION SPEC		SCALE 1:2 SHEET 2 OF 4 REV H	
				WEIGHT		Customer Accessible Production Drawing	

PART NUMBER	REVISION	DESCRIPTION	FEED TYPE
2-2151030-1	G	FINE CRIMP HEIGHT ADJUST	MECHANICAL
2-2151030-2	H	FINE CRIMP HEIGHT ADJUST	PNEUMATIC
7-2151030-7	C	CRIMP TOOLING KIT	-

PACIFIC VERSION TERMINATOR
 INTERFACE ADAPTER



APPLICATOR DATA		
CRIMP	SIZE	TYPE
WIRE	1.57 mm [.062]	F
INSUL	2.79 mm [.110]	F

APPLICATOR INSTRUCTIONS
 408-35042

TERMINAL DATA: TE TERMINAL		TE CRIMP SPECIFICATION	
TERMINAL NAME: MINI UNIVERSAL MATE-N-LOK			
WIRE STRIP LENGTH		INSULATION DIAMETER RANGE	
3.20-3.70 mm [1.26-.146 IN]		-	
TERMINAL APPLICATION SPECIFICATION	(A)114-16017	(A)114-13089	-
	(B)114-5050	-	-

TERMINALS APPLIED				TERM PART NO	INSULATION RANGE	
TE TERMINAL	TE TERMINAL	TE TERMINAL	TE TERMINAL			
(A) 770903-1	(A) 770904-1	(A) 794137-1	(B) 170360-6	770903	1.5-2.4 mm	
(A) 770903-2	(A) 770904-2	(A) 794137-2	(B) 170362-1	770904		
(A) 770903-3	(A) 770904-3	(A) 794137-3	(B) 170362-2	170362		
(A) 770903-4	(A) 770904-4	(A) 1-794137-0	(B) 170362-3	170360		
(A) 770903-5	(A) 770904-5	(B) 170360-1	(B) 170362-4	794137		1.5-2.8 mm
(A) 770903-6	(A) 770904-6	(B) 170360-2	(B) 170362-6			
(A) 1-770903-0	(A) 1-770904-0	(B) 170360-3	(B) 1-170362-3			
(A) 1-770903-1	(A) 1-770904-1	(B) 170360-4				

WIRE SIZE	CRIMP HEIGHT mm [INCH]	CRIMP HEIGHT REFERENCE SETTING
18 AWG	1.07+/-0.05 [1.042+/-0.002]	6.7
0.75mm2	1.04+/-0.05 [1.041+/-0.002]	7.0
20 AWG OR 0.50mm2	0.91+/-0.05 [0.936+/-0.002]	8.5
2 X 22 AWG	0.91+/-0.05 [0.936+/-0.002]	8.5
22 AWG OR 0.35mm2	0.81+/-0.05 [0.832+/-0.002]	9.5

*WARNING
 ON INSTALLATION, SET WIRE DISC TO CRIMP HEIGHT REFERENCE SETTING FOR LARGEST WIRE SIZE. CRIMP HEIGHT REFERENCE SETTINGS GREATER THAN THE VALUE SHOWN MAY CAUSE DAMAGE TO THE CRIMP TOOLING, REFER TO THE INSTRUCTION SHEET FOR PROPER SETUP AND ADJUSTMENTS.

- 1 RECOMMENDED SPARE PARTS
- 2 REFER TO SUPPLIED INSTRUCTION SHEET FOR CLEANING, LUBRICATION AND STORAGE OF APPLICATOR.
- 3 APPLY PART NUMBER 2-23419-6 LOCTITE TO THREADS OF ITEM 242.
- 4 CRIMP HEIGHT REFERENCE SETTING WAS THE SETTING USED WHEN THE APPLICATOR WAS QUALIFIED AT THE FACTORY. ADJUSTMENT MAY BE NECESSARY WHEN RUNNING APPLICATOR IN THE FIELD.
- 5 TERMINAL LUBRICANT IS RECOMMENDED.
- 6 114-13089 TERMINAL SPECIFICATION IS FOR SEAL APPLICATION ONLY. "F" TYPE INSULATION CRIMP SNAIL CAM SETTING FOR SEAL APPLICATIONS WILL DIFFER TO THAT OF UNSEALED APPLICATIONS
- 7. UNLESS SPECIFIED OTHERWISE TORQUE VALUES SHALL BE USED PER DOCUMENT, 101-35000.

LOC	DIST	REVISIONS					
A	66	P	LTN	DESCRIPTION	DATE	OWN	APVD
-	-	-	-	SEE SHEET 1	-	-	-

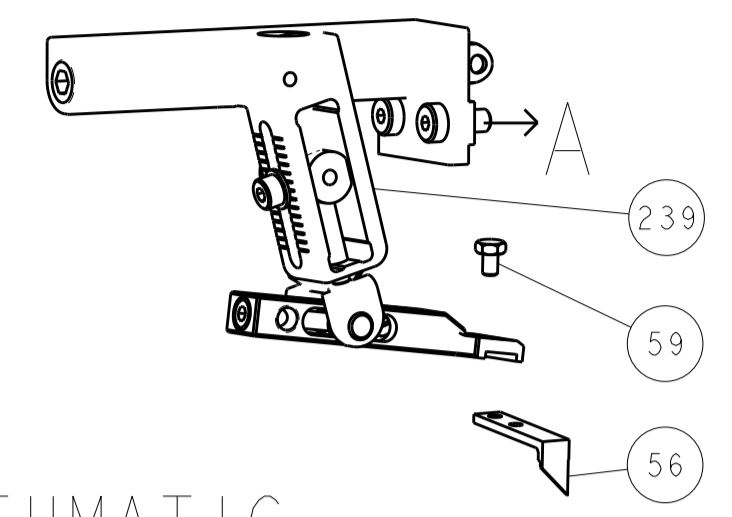
-	1	1	2119082-3	CAM, SNAIL, INSULATION ADJUSTMENT	244
-	1	1	2079764-1	WASHER, WAVE SPRING, CREST-TO-CREST	243
-	1	1	2119083-1	RETAINER, INSULATION DIAL	242
-	1	1	7-18023-7	SCR, SKT HD CAP M3 X 4.0	241
-	-	1	2119580-1	MECHANICAL FEED ASSEMBLY	239
-	1	-	2844940-1	AIR FEED MODULE	238
-	REF	REF	994970-2	COUNTER, MAGNETIC	164
-	1	-	2119641-2	FEED CAM, AIR FEED	151
-	1	1	2168083-8	SCR, SKT HD CAP, RoHS, M4 X 16	144
-	4	4	2168083-9	SCR, SKT HD CAP, RoHS, M4 X 20	143
-	-	1	2119653-2	FEED CAM, POST FEED	142
-	1	1	1-1803583-0	APPLICATOR BASIC ASSEMBLY, SF	141
-	1	1	1803516-1	RAM ASSEMBLY, SF PACIFIC	140
-	1	1	2119955-1	ASSY, LUBRICATOR, SIDE FEED	113
-	1	1	2844908-1	SCREW, LOCKING	99
-	1	1	2844907-1	POST, LOCKING	98
-	1	1	455888-5	SPACER, CRIMPER	82
-	1	1	1803607-3	DOCUMENTATION PACKAGE	71
-	1	1	2119740-1	TAG, IDENTIFICATION	67
-	2	2	2168078-1	SCREW, DRIVE, RH, RoHS, 2 x .188	66
-	1	1	5-18022-5	SCR, HEX HD CAP, M4 X 6.0	59
-	1	1	1338685-1	PAWL, FEED	56
-	2	2	2168083-3	SCR, SKT HD CAP, RoHS, M4 X 12.0	53
-	1	1	1803382-6	HOLD DOWN, SPRING LOADED	50
-	1	2	18023-9	SCR, SKT HD CAP M4 X 6.0	49
-	-	1	2119652-1	FEED CAM, PRE FEED	48
-	1	1	1803602-1	SCR, BHSC, RoHS (M8 X 25)	41
-	1	1	1752356-5	SUPPORT, TERMINAL	34
-	2	2	2079383-5	SCR, BHSC, RoHS (M4 X 20)	33
-	2	2	2-2844962-4	SPACER, CYLINDRICAL, STRIP GUIDE	30
-	1	1	2844992-1	ASSEMBLY, STRIP GUIDE	29
-	1	1	455888-3	SPACER, CRIMPER	28
-	1	1	1320928-2	STRIP GUIDE	24
-	1	1	2168083-2	SCR, SKT HD CAP, RoHS, M4 X 8.0	21
-	2	2	1-18028-2	WASHER, FLAT, REG M4	20
-	1	1	2119533-1	STRIPPER, SIDE FEED	19
-	1	1	2119806-1	INSERT, SHEAR	13
-	1	1	3-22280-3	SPRING, COMPRESSION	12
-	1	1	2-519000-1	SCR, SKT HD CAP M4 X 10.0	11
-	1	1	2119805-1	SHEAR HOLDER, FRONT	10
-	1	1	1803095-1	FLOATING SHEAR, FRONT	9
-	1	1	1338691-1	ANVIL, COMBINATION .062	8
-	1	1	3-240641-3	SPACER	7
-	1	1	2119757-4	DEPRESSOR, SHEAR	5
-	1	1	2-238011-2	BLOCK, CRIMPER SPACER	4
-	1	1	2-2119582-1	CRIMPER, INSULATION F PREMIUM	3
-	1	1	455888-1	SPACER, CRIMPER	2
-	1	1	1633860-3	CRIMPER, WIRE	1

PACIFIC VERSION
 Shown on sheets 3 of 4 & 4 of 4
 (Atlantic version shown on sheets 1 of 4 & 2 of 4)

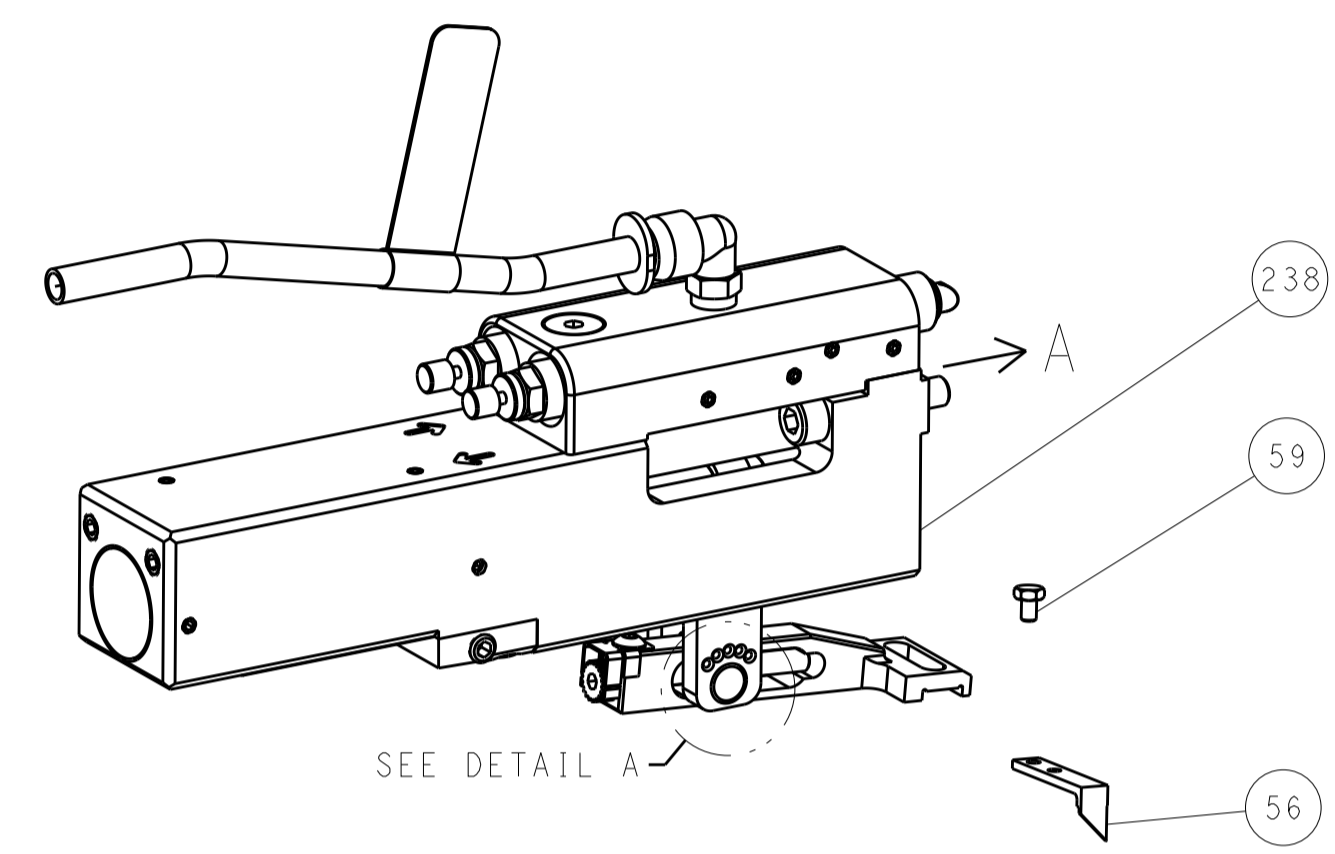
DIMENSIONS: mm		TOLERANCES UNLESS OTHERWISE SPECIFIED:		DWN C. MOYER 03NOV2011		CHK G. BAILEY 03NOV2011		APVD G. BAILEY 03NOV2011		NAME	
0 PLC	±	0.15	±	TE Connectivity		Harrisburg, PA 17105-3608		PRODUCT SPEC		Ocean Side Feed Applicator	
1 PLC	±	0.25	±	Customer Accessible Production Drawing		SCALE 1:2		SHEET 3 OF 4		REV H	
2 PLC	±	0.38	±	Customer Accessible Production Drawing		SCALE 1:2		SHEET 3 OF 4		REV H	
3 PLC	±	0.51	±	Customer Accessible Production Drawing		SCALE 1:2		SHEET 3 OF 4		REV H	
4 PLC	±	0.64	±	Customer Accessible Production Drawing		SCALE 1:2		SHEET 3 OF 4		REV H	
ANGLES	±	0.15	±	Customer Accessible Production Drawing		SCALE 1:2		SHEET 3 OF 4		REV H	
FINISH	±	0.15	±	Customer Accessible Production Drawing		SCALE 1:2		SHEET 3 OF 4		REV H	

LOC	DIST	REV	DATE	BY	APP'D
A	66				

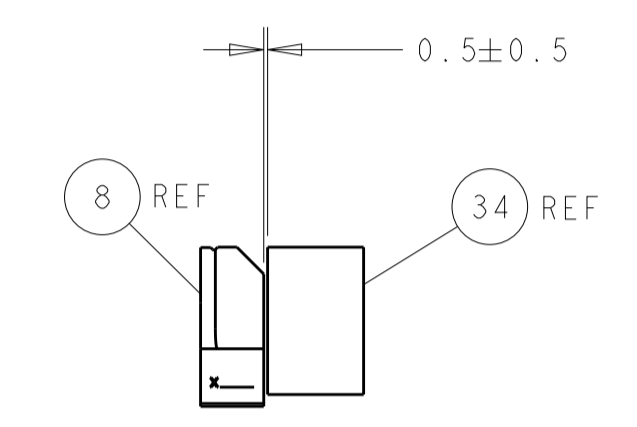
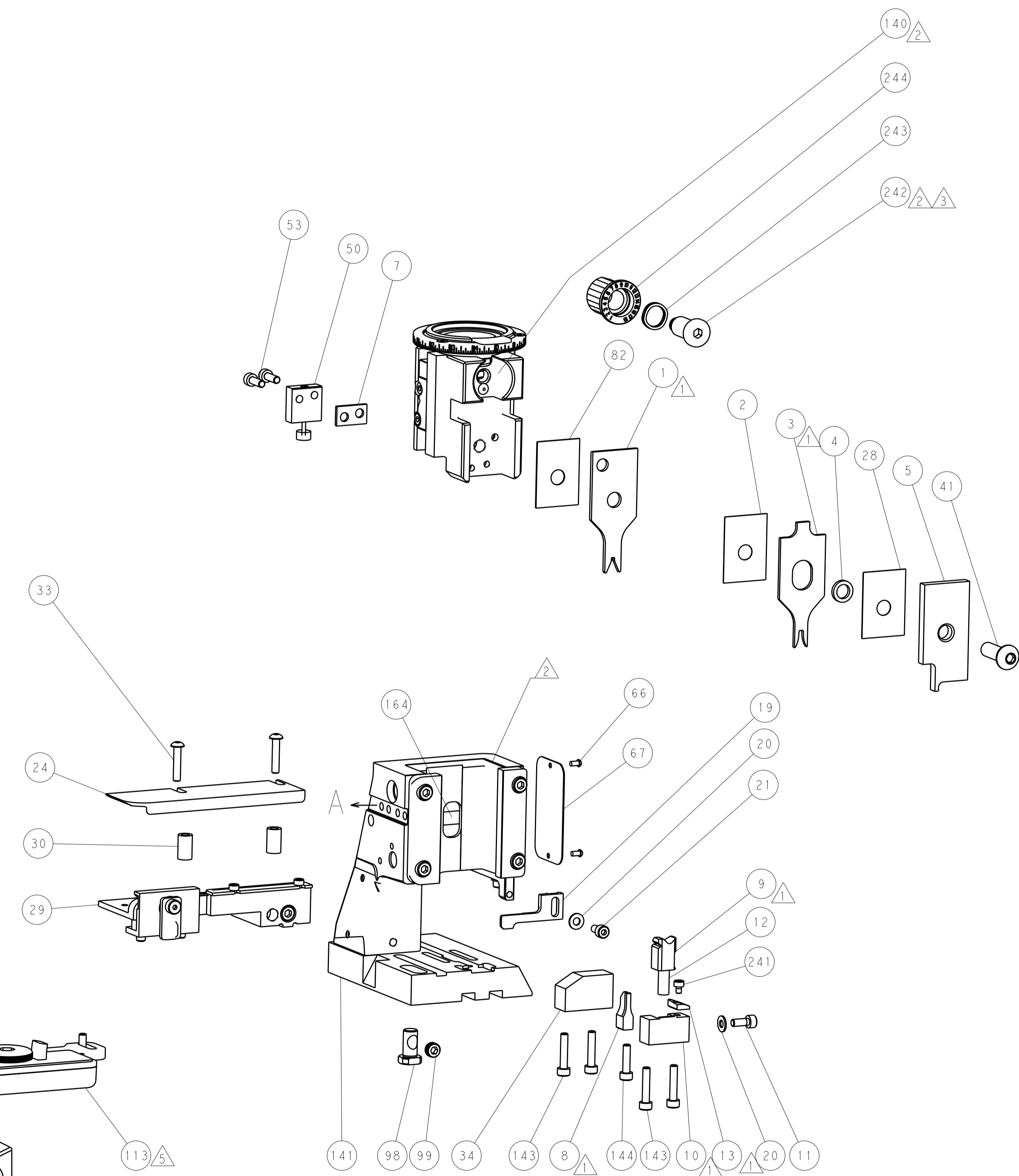
FEED TYPE MECHANICAL



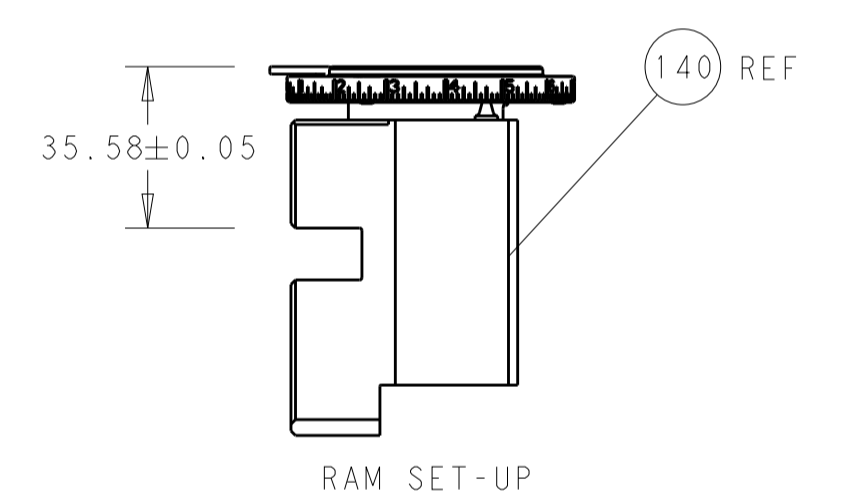
PNEUMATIC



FEED SPRING SETTING POSITION (SHOWN FROM REAR SIDE)

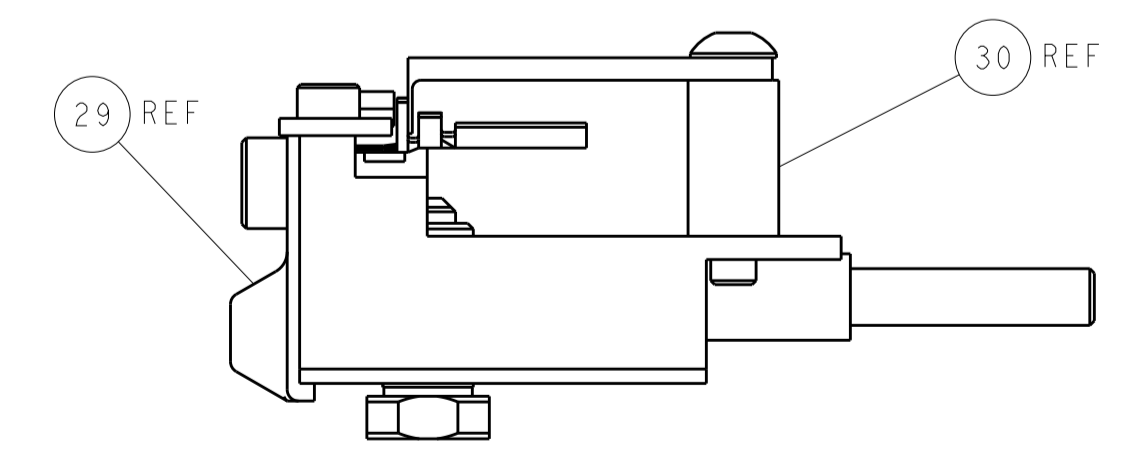


TERMINAL SUPPORT LOCATION



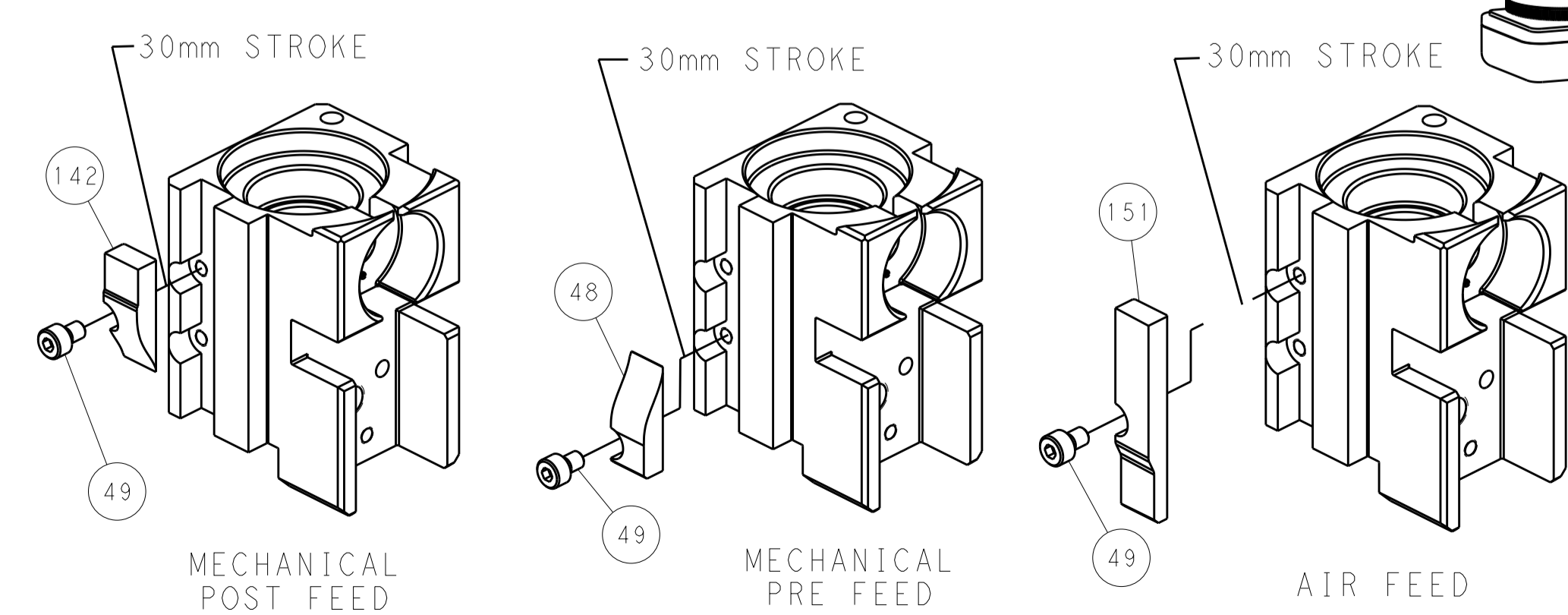
RAM SET-UP

ITEM 30 LOCATED AT FRONT HOLES



FEED TRACK POSITION GUIDE BY INSULATION BARREL

CAM POSITIONS



PACIFIC VERSION
 Shown on sheets 3 of 4 & 4 of 4
 (Atlantic version shown on sheets 1 of 4 & 2 of 4)

DIMENSIONS:		TOLERANCES UNLESS OTHERWISE SPECIFIED:		DWG: C. MOYER 03NOV2011		TE Connectivity	
mm	0 PLC ±	1 PLC ±	2 PLC ±	3 PLC ±	4 PLC ±	5 PLC ±	Harrisburg, PA 17105-3608
	ANGLES	FINISH		CHK: G. BAILEY 03NOV2011	NAME: Ocean Side Feed Applicator	RESTRICTED TO	
MATERIAL:				APVD: G. BAILEY 03NOV2011	SIZE: CAGE CODE DRAWING NO: A1 00779 C=2151030	SHEET 4 OF 4 REV H	
Customer Accessible Production Drawing				SCALE: 1:2		SHEETS 1 & 2 ARE NOT REQUIRED FOR PACIFIC VERSION	

Mouser Electronics

Authorized Distributor

Click to View Pricing, Inventory, Delivery & Lifecycle Information:

[TE Connectivity:](#)

[2-2151030-1](#)