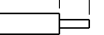

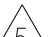


8		7	
THIS DRAWING IS UNPUBLISHED.		RELEASED FOR PUBLICATION	
20		20	
COPYRIGHT 20 BY TYCO ELECTRONICS CORPORATION. ALL RIGHTS RESERVED.			
PART NUMBER	REVISION	DESCRIPTION	FEED TYPE
2150945-1	B	FINE CRIMP HEIGHT ADJUST	MECHANICAL
2150945-2	B	FINE CRIMP HEIGHT ADJUST	PNEUMATIC
7-2150945-1	B	MECHANICAL AND CRIMP TOOLING KIT	MECHANICAL
7-2150945-2	B	PNEUMATIC AND CRIMP TOOLING KIT	PNEUMATIC
7-2150945-7	A	CRIMP TOOLING KIT	-

APPLICATOR DATA		
CRIMP	SIZE	TYPE
WIRE	2.79 mm [.110]	F
INSUL	5.84 mm [.230]	O
APPL INSTRUCTIONS 408-35043		

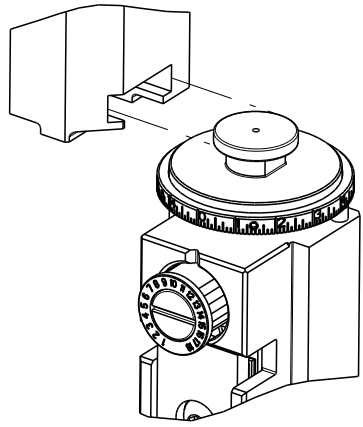
TERMINAL DATA: TE TERMINAL		TE CRIMP SPECIFICATION	
TERMINAL NAME: .250 SERIES REC ECONOSEAL 3 HIGH CURRENT			
WIRE STRIP LENGTH			TERMINAL INSULATION DIAMETER RANGE
5.00-5.50 mm [.197-.217 IN]			Ø4.10-5.50 mm [.161-.217 IN]
TERMINAL APPLICATION SPECIFICATION 		114-3036	-
		-	-
TERMINALS APPLIED 			
TE TERMINAL	TE TERMINAL	TE SEAL	TE SEAL
344009-1			347713-1
			347707-1

WIRE SIZE		CRIMP HEIGHT mm [INCH]		CRIMP HEIGHT REFERENCE SETTING	
3.00mm2		2.03+/-0.05 [.080+/- .002]		7.8	
2.50mm2		1.85+/-0.05 [.073+/- .002]		9.5	
2.00mm2		1.70+/-0.05 [.067+/- .002]		11.1	



- RECOMMENDED SPARE PARTS
- REFER TO SUPPLIED INSTRUCTION SHEET FOR CLEANING, LUBRICATION AND STORAGE OF APPLICATOR.
- APPLY PART NUMBER 2-23419-6 LOCTITE TO THREADS OF ITEM 242. PLY PART NUMBER 1-23419-5 LOCTITE TO THREADS OF ITEM 180.
- CRIMP HEIGHT REFERENCE SETTING WAS THE SETTING USED WHEN THE APPLICATOR WAS QUALIFIED AT THE FACTORY. ADJUSTMENT MAY BE NECESSARY WHEN RUNNING APPLICATOR IN THE FIELD.
- TERMINAL LUBRICANT IS RECOMMENDED.
6. UNLESS SPECIFIED OTHERWISE TORQUE VALUES SHALL BE USED PER DOCUMENT, 101-35000.
- APPLY TORQ-SEAL IN ALLEN SOCKET TO FILL HOLE AFTER SOCKET HEAD HAS BEEN ADJUSTED TO CORRECT HEIGHT AT QUALIFICATION.

ATLANTIC VERSION TERMINATOR
INTERFACE ADAPTER



*WARNING
ON INSTALLATION, SET WIRE DISC TO CRIMP HEIGHT REFERENCE SETTING FOR LARGEST WIRE SIZE. CRIMP HEIGHT REFERENCE SETTINGS GREATER THAN THE VALUE SHOWN MAY CAUSE DAMAGE TO THE CRIMP TOOLING. REFER TO THE INSTRUCTION SHEET FOR PROPER SETUP AND ADJUSTMENTS.

ATLANTIC VERSION
Shown on sheets 1 of 4 & 2 of 4
(Pacific version shown on sheets 3 of 4 & 4 of 4)

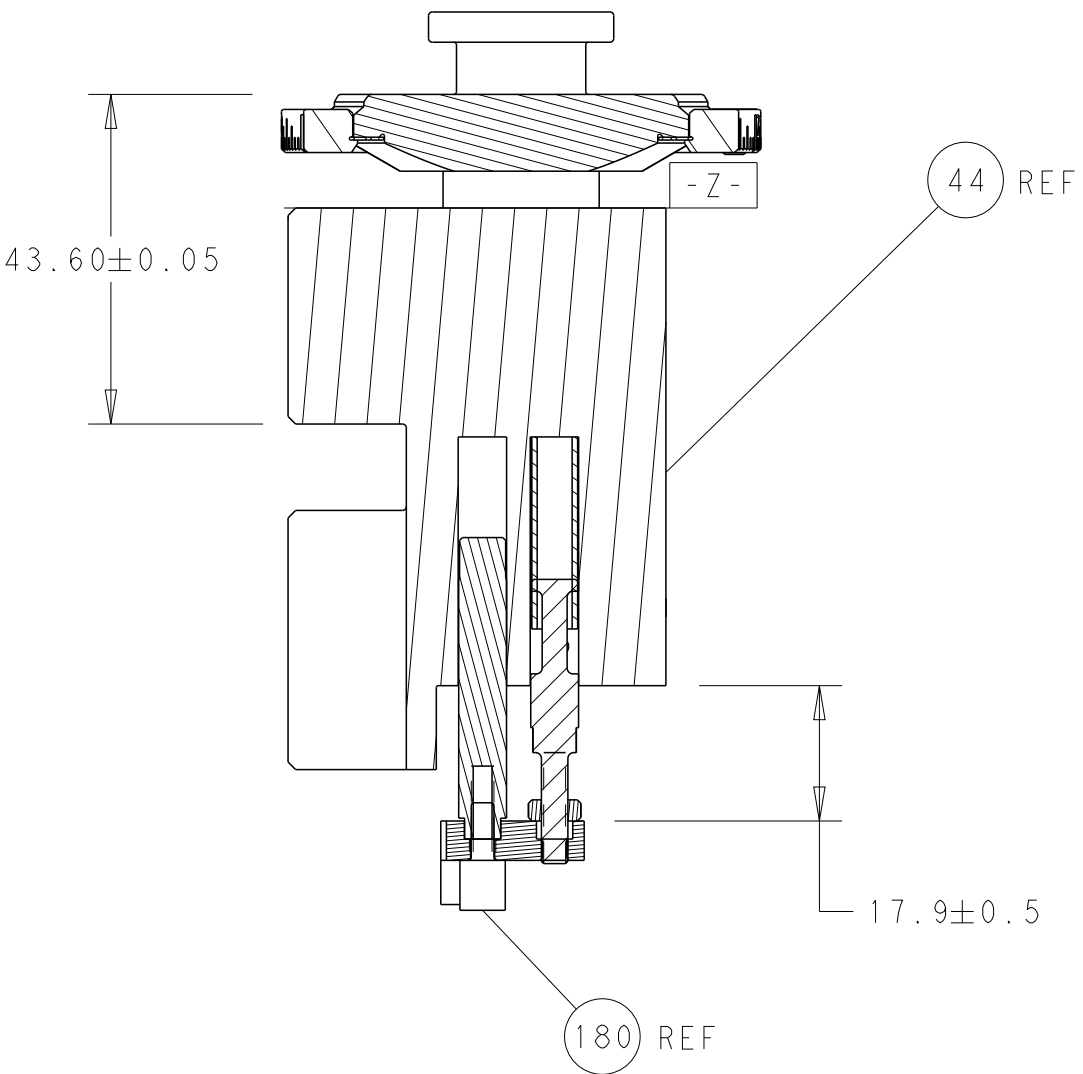
2		1					
LOC	DIST	REVISIONS					
A	66	P	LTR	DESCRIPTION	DATE	DWN	APVD
			A	RELEASED	27SEP2018	TB	GB
			B	ECR-20-016625	22NOV2020	TB	RK

-	1	1	1	1	1803203-3	BLOCK, FRONT DEPRESSOR	258
-	1	-	1	-	2119641-1	FEED CAM, AIR FEED	248
-	1	1	1	1	2119082-3	CAM, SNAIL, INSULATION ADJUSTMENT	244
-	1	1	1	1	2079764-1	WASHER, WAVE SPRING, CREST-TO-CREST	243
3	-	1	1	1	2119083-1	RETAINER, INSULATION DIAL	242
-	-	1	-	1	2119580-1	MECHANICAL FEED ASSEMBLY	239
-	1	-	1	-	2844940-3	AIR FEED MODULE	238
7	-	1	1	1	1-2168083-3	SCR, SKT HD CAP, RoHS, M3 X 16	224
-	1	1	1	1	5018030-1	NUT, HEX, REG, RoHS, M3	223
-	1	1	1	1	455888-4	SPACER, CRIMPER	185
3	-	1	1	1	1-1752354-1	STANDOFF,HOLD-DOWN	180
-	1	1	1	1	6-9931111-6	PIN, SLOTTED SPRING 3.0 X 14.0	177
-	1	1	1	1	8-22280-7	SPRING, COMPRESSION	176
-	1	1	1	1	1752353-2	GUIDE PIN,HOLDDOWN	175
-	1	1	1	1	1901680-2	GUIDE PIN,HOLDDOWN	174
-	REF	REF	REF	REF	994970-2	COUNTER, MAGNETIC	164
5	-	1	1	1	2119955-2	ASSY, LUBRICATOR, END FEED	84
-	1	1	1	1	455888-5	SPACER, CRIMPER	82
-	1	1	1	1	1803607-4	DOCUMENTATION PACKAGE	71
-	2	2	2	2	2-18032-2	SCR, SET, FLT PNT, M3 X 10.0	70
-	1	1	1	1	2119740-1	TAG,IDENTIFICATION	67
-	2	2	2	2	2168078-1	SCREW, DRIVE, RH, RoHS, 2 x .188	66
-	1	1	1	1	1901681-1	HOLDDOWN, TERMINAL	65
-	1	1	1	1	2168083-2	SCR, SKT HD CAP, RoHS, M4 X 8.0	60
-	1	1	1	1	5-18022-5	SCR, HEX HD CAP, M4 X 6.0	59
-	-	1	-	1	2063961-1	FEED FINGER	58
-	4	4	4	4	2168400-4	SHCS, LOW HEAD, RoHS, M4 X 8	57
-	2	2	2	2	2168083-3	SCR, SKT HD CAP, RoHS, M4 X 12.0	56
-	2	2	2	2	5018030-1	NUT, HEX, REG, RoHS, M3	54
-	2	2	2	2	986965-8	NUT, LOCK, HEX, TORQUE (M4)	53
-	1	1	1	1	1-5018030-0	NUT, HEX, REG, RoHS, M3.5	52
-	1	-	1	-	2063961-1	FEED FINGER	51
-	1	2	1	2	18023-9	SCR, SKT HD CAP M4 X 6.0	49
-	-	1	-	1	2119652-1	FEED CAM, PRE FEED	48
-	-	1	-	1	2119653-1	FEED CAM, POST FEED	47
-	1	1	1	1	2119655-5	APPLICATOR BASIC ASSEMBLY, EF	46
-	1	1	1	1	1803517-1	RAM ASSEMBLY, EF ATLANTIC	44
-	1	1	1	1	1803602-1	SCR, BHSC, RoHS (M8 X 25)	41
-	8	8	8	8	1-18028-2	WASHER, FLAT, REG M4	33
-	2	2	2	2	2168083-9	SCR, SKT HD CAP, RoHS, M4 X 20	31
-	2	2	2	2	2168083-2	SCR, SKT HD CAP, RoHS, M4 X 8.0	29
-	1	1	1	1	240639-1	STRIPPER (MACHINING)	27
-	2	2	2	2	1-2168083-5	SCR, SKT HD CAP, RoHS, M4 X 30	25
-	1	1	1	1	1-1752371-2	PLATE, STRIP GUIDE	24
-	2	2	2	2	2-22281-3	SPRING, COMPRESSION	22
-	1	1	1	1	1803292-4	DRAG	20
-	1	1	1	1	1803152-2	STRIP GUIDE, REAR	19
-	1	1	1	1	1803151-2	STRIP GUIDE, FRONT	18
-	4	4	4	4	1-2079383-1	SCR, BHSC, RoHS (M6 X 12)	17
-	1	1	1	1	1752360-1	SPACER,HOLD-DOWN	13
1	-	1	1	1	240644-5	PLATE, REAR SHEAR	11
-	-	-	-	-	-	-	10
1	-	1	1	1	3-690482-4	PLATE, FRONT SHEAR	9
1	1	2	2	1	1333295-3	ANVIL, COMBINATION, SPECIAL	8
1	-	1	1	1	2217206-5	BLADE, SLUG	7
-	-	-	-	-	-	-	6
-	1	1	1	1	1-240641-4	SPACER	5
-	1	1	1	1	4-238011-5	BLOCK, CRIMPER SPACER	4
1	1	2	2	1	1-1803018-4	CRIMPER, INSULATION O	3
-	1	1	1	1	455888-9	SPACER, CRIMPER	2
1	1	2	2	1	456408-2	CRIMPER, WIRE PREMIUM	1
-	7	7	2	1	2	1	1

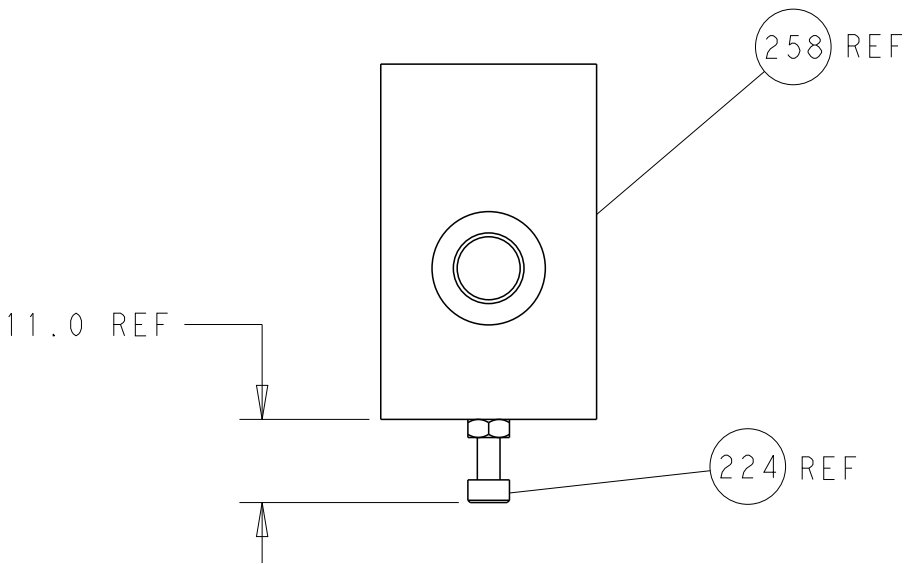
THE INFORMATION CONTAINED HEREIN IS UNCLASSIFIED EXCEPT WHERE SHOWN OTHERWISE. IT IS SUBJECT TO CHANGE WITHOUT NOTICE AND THE ISSUING ORGANIZATION SHALL BE CONTACTED FOR THE LATEST EDITION.		DWN T. BROOKENS CHK M. HERR APVD T. ELBIN	07AUG2018 07AUG2018 07AUG2018	TE Connectivity Harrisburg, PA 17105-3608	
DIMENSIONS: mm		TOLERANCES UNLESS OTHERWISE SPECIFIED: 0 PLC ±.01 1 PLC ±.01 2 PLC ±.01 3 PLC ±.01 4 PLC ±.01 ANGLES ±.01 FINISH		NAME Ocean End Feed Applicator	
		APPLICATION SPEC		SIZE A	
MATERIAL -		WEIGHT -		CAGE CODE 00779	
		Customer Accessible Production Drawing		SCALE 1:1	
		SHEET 1		OF 4	
		REV B			

SHEETS 3 & 4 ARE NOT REQUIRED FOR ATLANTIC VERSION

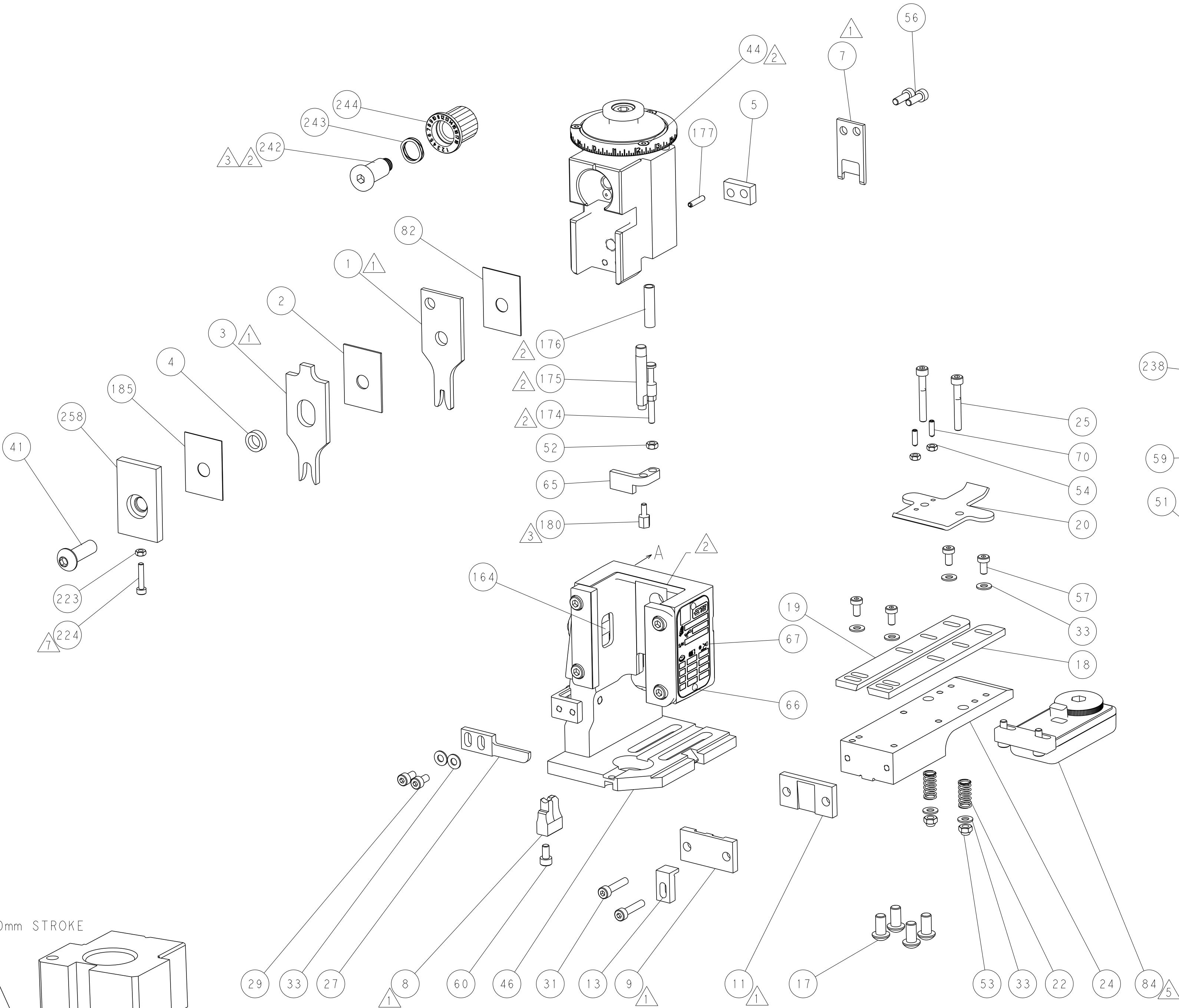
LOC	DIST	REVISIONS					
		P	LTR	DESCRIPTION	DATE	DWN	APVD
A	66	-	-	SEE SHEET 1	-	-	-



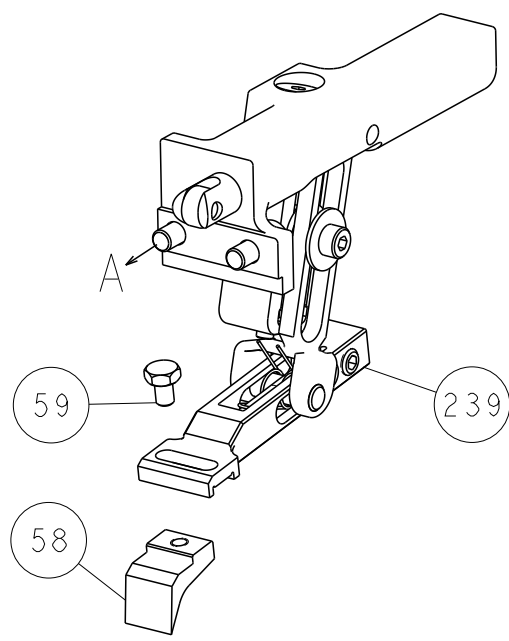
RAM AND HOLDDOWN SET-UP



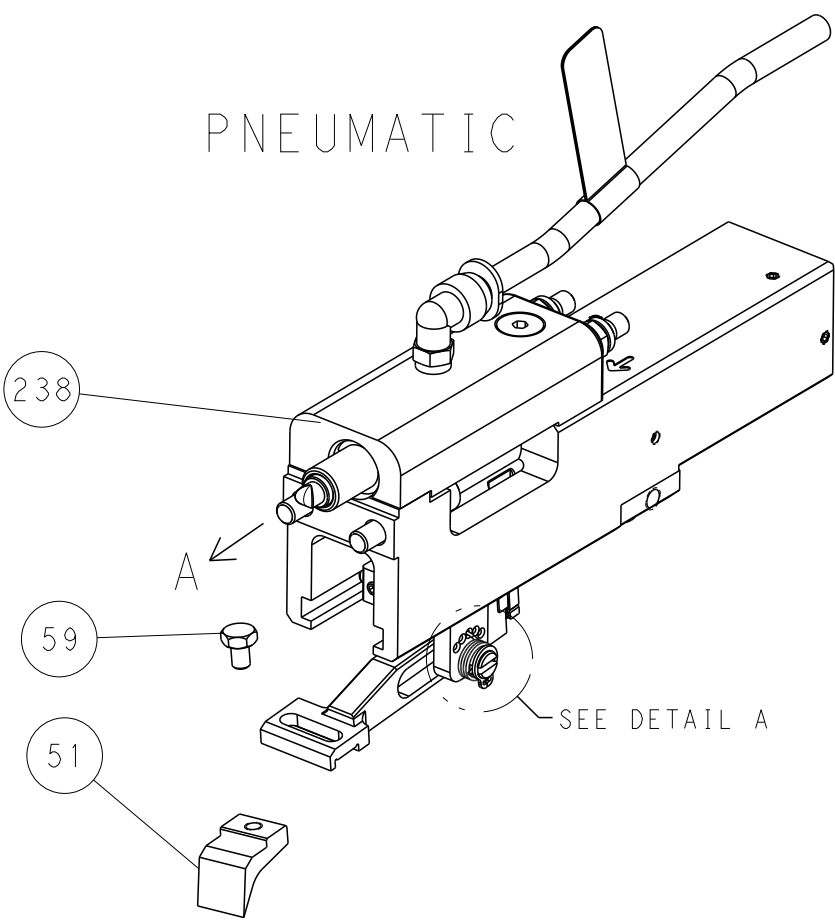
SEAL SCREW SET-UP



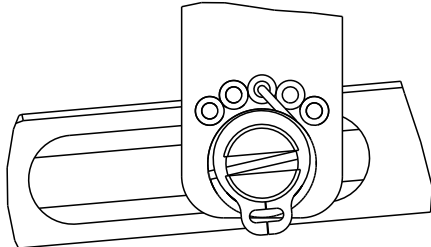
FEED TYPE
MECHANICAL



PNEUMATIC

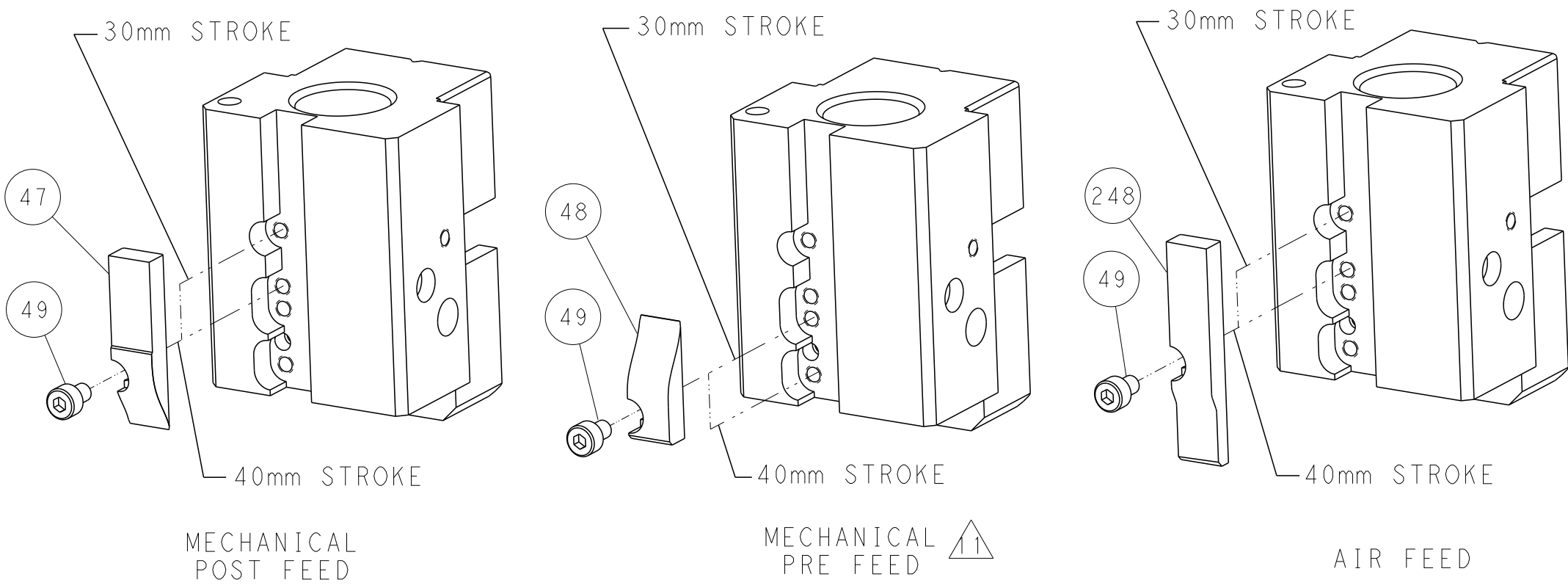


FEED SPRING
SETTING POSITION



DETAIL A

CAM POSITIONS

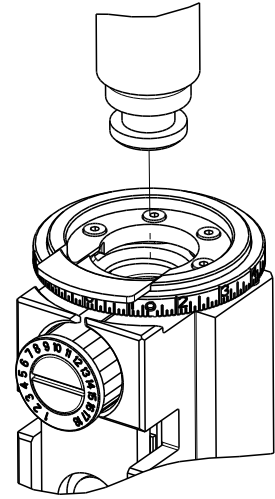


ATLANTIC VERSION
Shown on sheets 1 of 4 & 2 of 4
(Pacific version shown on sheets 3 of 4 & 4 of 4)

THIS DRAWING IS CONTROLLED DOCUMENT FOR TYCO ELECTRONICS CORPORATION IT IS SUBJECT TO CHANGE WITHOUT NOTICE AND THE USER'S ORGANIZATION SHOULD BE CONTACTED FOR THE LATEST VERSION.				DWN T. BROOKENS 07AUG2018	TE Connectivity Harrisburg, PA 17105-3608
DIMENSIONS:				CHK M. HERR 07AUG2018	
mm				APVD T. ELBIN 07AUG2018	
				PRODUCT SPEC	
TOLERANCES UNLESS OTHERWISE SPECIFIED:				APPLICATION SPEC	NAME Ocean End Feed Applicator
0 PLC ±.0005 1 PLC ±.0005 2 PLC ±.0005 3 PLC ±.0005 4 PLC ±.0005 ANGLES ±.0005 FINISH				WEIGHT	
MATERIAL				SCALE	RESTRICTED TO
-				1:1	
Customer Accessible Production Drawing				SHEET 2 OF 4	REV B

8		7	
THIS DRAWING IS UNPUBLISHED.		RELEASED FOR PUBLICATION	
20		20	
COPYRIGHT 20		BY TYCO ELECTRONICS CORPORATION. ALL RIGHTS RESERVED.	
PART NUMBER	REVISION	DESCRIPTION	FEED TYPE
2-2150945-1	B	FINE CRIMP HEIGHT ADJUST	MECHANICAL
2-2150945-2	B	FINE CRIMP HEIGHT ADJUST	PNEUMATIC
7-2150945-7	A	CRIMP TOOLING KIT	-

PACIFIC VERSION TERMINATOR
INTERFACE ADAPTER



APPLICATOR DATA		
CRIMP	SIZE	TYPE
WIRE	2.79 mm [.110]	F
INSUL	5.84 mm [.230]	O
APPL INSTRUCTIONS 408-35043		

TERMINAL DATA: TE TERMINAL		TE CRIMP SPECIFICATION	
TERMINAL NAME: .250 SERIES REC		ECONOSEAL 3 HIGH CURRENT	
WIRE STRIP LENGTH 5.00-5.50 mm [.197-.217 IN]		TERMINAL INSULATION DIAMETER RANGE Ø4.10-5.50 mm [.161-.217 IN]	
TERMINAL APPLICATION SPECIFICATION 114-3036			
TERMINALS APPLIED			
TE TERMINAL	TE TERMINAL	TE SEAL	TE SEAL
344009-1			347713-1
			347707-1
		CABLE DIAMETER	
		2.6-3.4	
		2.2 MIN	

WIRE SIZE		CRIMP HEIGHT mm [INCH]		CRIMP HEIGHT REFERENCE SETTING
3.00mm2		2.03+/-0.05 [.080+/- .002]		7.8
2.50mm2		1.85+/-0.05 [.073+/- .002]		9.5
2.00mm2		1.70+/-0.05 [.067+/- .002]		11.1



- RECOMMENDED SPARE PARTS

REFER TO SUPPLIED INSTRUCTION SHEET FOR CLEANING, LUBRICATION AND STORAGE OF APPLICATOR.

APPLY PART NUMBER 2-23419-6 LOCTITE TO THREADS OF ITEM 242. PLY PART NUMBER 1-23419-5 LOCTITE TO THREADS OF ITEM 180.

CRIMP HEIGHT REFERENCE SETTING WAS THE SETTING USED WHEN THE APPLICATOR WAS QUALIFIED AT THE FACTORY. ADJUSTMENT MAY BE NECESSARY WHEN RUNNING APPLICATOR IN THE FIELD.

TERMINAL LUBRICANT IS RECOMMENDED.

6. UNLESS SPECIFIED OTHERWISE TORQUE VALUES SHALL BE USED PER DOCUMENT, 101-35000.

APPLY TORQ-SEAL IN ALLEN SOCKET TO FILL HOLE AFTER SOCKET HEAD HAS BEEN ADJUSTED TO CORRECT HEIGHT AT QUALIFICATION.

*WARNING
ON INSTALLATION, SET WIRE DISC TO CRIMP HEIGHT REFERENCE SETTING FOR LARGEST WIRE SIZE. CRIMP HEIGHT REFERENCE SETTINGS GREATER THAN THE VALUE SHOWN MAY CAUSE DAMAGE TO THE CRIMP TOOLING. REFER TO THE INSTRUCTION SHEET FOR PROPER SETUP AND ADJUSTMENTS.

PACIFIC VERSION
Shown on sheets 3 of 4 & 4 of 4
(Atlantic version shown on sheets 1 of 4 & 2 of 4)

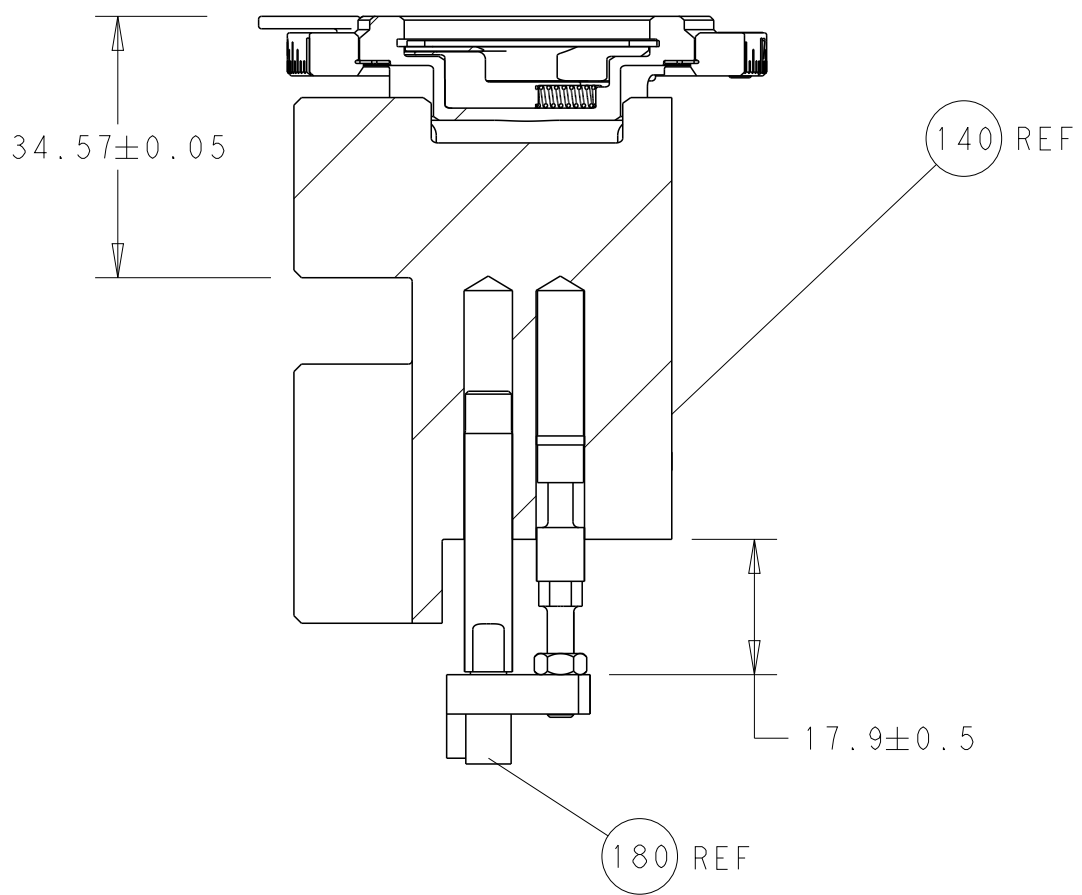
2		1					
LOC	DIST	REVISIONS					
A	66	P	LTR	DESCRIPTION	DATE	DWN	APVD
		-		SEE SHEET 1	-	-	-

	-	1	1	1803203-3	BLOCK, FRONT DEPRESSOR	258
	-	1	1	2119082-3	CAM, SNAIL, INSULATION ADJUSTMENT	244
	-	1	1	2079764-1	WASHER, WAVE SPRING, CREST-TO-CREST	243
3	-	1	1	2119083-1	RETAINER, INSULATION DIAL	242
	-	-	1	2119580-1	MECHANICAL FEED ASSEMBLY	239
	-	1	-	2844940-3	AIR FEED MODULE	238
7	-	1	1	1-2168083-3	SCR, SKT HD CAP, RoHS, M3 X 16	224
	-	1	1	5018030-1	NUT, HEX, REG, RoHS, M3	223
	-	4	4	2079383-9	SCR, BHSC, RoHS (M6 X 20)	186
	-	1	1	455888-4	SPACER, CRIMPER	185
3	-	1	1	1-1752354-1	STANDOFF,HOLD-DOWN	180
	-	1	1	6-9931111-6	PIN, SLOTTED SPRING 3.0 X 14.0	177
	-	1	1	8-22280-7	SPRING, COMPRESSION	176
	-	1	1	1752353-2	GUIDE PIN,HOLDDOWN	175
	-	1	1	1901680-2	GUIDE PIN,HOLDDOWN	174
	-	REF	REF	994970-2	COUNTER, MAGNETIC	164
	-	1	-	2119641-2	FEED CAM, AIR FEED	152
	-	1	1	2168083-8	SCR, SKT HD CAP, RoHS, M4 X 16	144
	-	-	1	2119653-2	FEED CAM, POST FEED	142
	-	1	1	2119655-6	APPLICATOR BASIC ASSEMBLY, EF	141
	-	1	1	1803518-1	RAM ASSEMBLY, EF PACIFIC	140
5	-	1	1	2119955-2	ASSY, LUBRICATOR, END FEED	84
	-	1	1	455888-5	SPACER, CRIMPER	82
	-	1	1	1803607-4	DOCUMENTATION PACKAGE	71
	-	2	2	2-18032-2	SCR, SET, FLT PNT, M3 X 10.0	70
	-	1	1	2119740-1	TAG,IDENTIFICATION	67
	-	2	2	2168078-1	SCREW, DRIVE, RH, RoHS, 2 x .188	66
	-	1	1	1901681-1	HOLDDOWN, TERMINAL	65
	-	1	1	5-18022-5	SCR, HEX HD CAP, M4 X 6.0	59
	-	-	1	2063961-1	FEED FINGER	58
	-	4	4	2168400-4	SHCS, LOW HEAD, RoHS, M4 X 8	57
	-	2	2	2168083-3	SCR, SKT HD CAP, RoHS, M4 X 12.0	56
	-	2	2	5018030-1	NUT, HEX, REG, RoHS, M3	54
	-	2	2	986965-8	NUT, LOCK, HEX, TORQUE (M4)	53
	-	1	1	1-5018030-0	NUT, HEX, REG, RoHS, M3.5	52
	-	1	-	2063961-1	FEED FINGER	51
	-	1	2	18023-9	SCR, SKT HD CAP M4 X 6.0	49
	-	-	1	2119652-1	FEED CAM, PRE FEED	48
	-	1	1	1803602-1	SCR, BHSC, RoHS (M8 X 25)	41
	-	8	8	1-18028-2	WASHER, FLAT, REG M4	33
	-	2	2	2168083-9	SCR, SKT HD CAP, RoHS, M4 X 20	31
	-	2	2	2168083-2	SCR, SKT HD CAP, RoHS, M4 X 8.0	29
	-	1	1	240639-1	STRIPPER (MACHINING)	27
	-	2	2	1-2168083-5	SCR, SKT HD CAP, RoHS, M4 X 30	25
	-	1	1	1-1752371-2	PLATE, STRIP GUIDE	24
	-	2	2	2-22281-3	SPRING, COMPRESSION	22
	-	1	1	1803292-4	DRAG	20
	-	1	1	1803152-2	STRIP GUIDE, REAR	19
	-	1	1	1803151-2	STRIP GUIDE, FRONT	18
	-	1	1	1752360-1	SPACER,HOLD-DOWN	13
1	-	1	1	240644-5	PLATE, REAR SHEAR	11
	-	-	-	-	-	10
1	-	1	1	3-690482-4	PLATE, FRONT SHEAR	9
1	1	1	1	1333295-3	ANVIL, COMBINATION, SPECIAL	8
1	-	1	1	2217206-5	BLADE, SLUG	7
	-	-	-	-	-	6
	-	1	1	1-240641-4	SPACER	5
	-	1	1	4-238011-5	BLOCK, CRIMPER SPACER	4
1	1	1	1	1-1803018-4	CRIMPER, INSULATION O	3
	-	1	1	455888-9	SPACER, CRIMPER	2
1	1	1	1	456408-2	CRIMPER, WIRE PREMIUM	1
	-77-22-21			PART NO	DESCRIPTION	ITEM NO

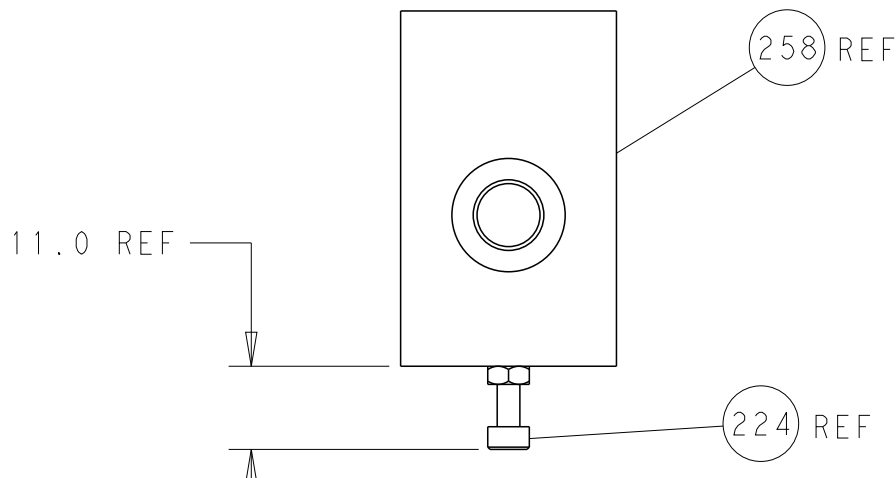
THIS DRAWING IS UNPUBLISHED. IT IS SUBJECT TO CHANGE WITHOUT NOTICE. THE USER SHALL BE RESPONSIBLE FOR OBTAINING THE LATEST EDITION.		DWN T. BROOKENS CHK M. HERR APVD T. ELBIN	07AUG2018 07AUG2018 07AUG2018	TE Connectivity Harrisburg, PA 17105-3608	
DIMENSIONS: mm		TOLERANCES UNLESS OTHERWISE SPECIFIED:		NAME Ocean End Feed Applicator	
		0 PLC ± 1 PLC ± 2 PLC ± 3 PLC ± 4 PLC ± ANGLES ± FINISH ±		PRODUCT SPEC APPLICATION SPEC SIZE CAGE CODE DRAWING NO RESTRICTED TO	
MATERIAL -		WEIGHT -		A1 00779 ©=2150945	
Customer Accessible Production Drawing		SCALE 1:1		SHEET 3 OF 4 REV B	

SHEETS 1 & 2 ARE NOT REQUIRED FOR PACIFIC VERSION

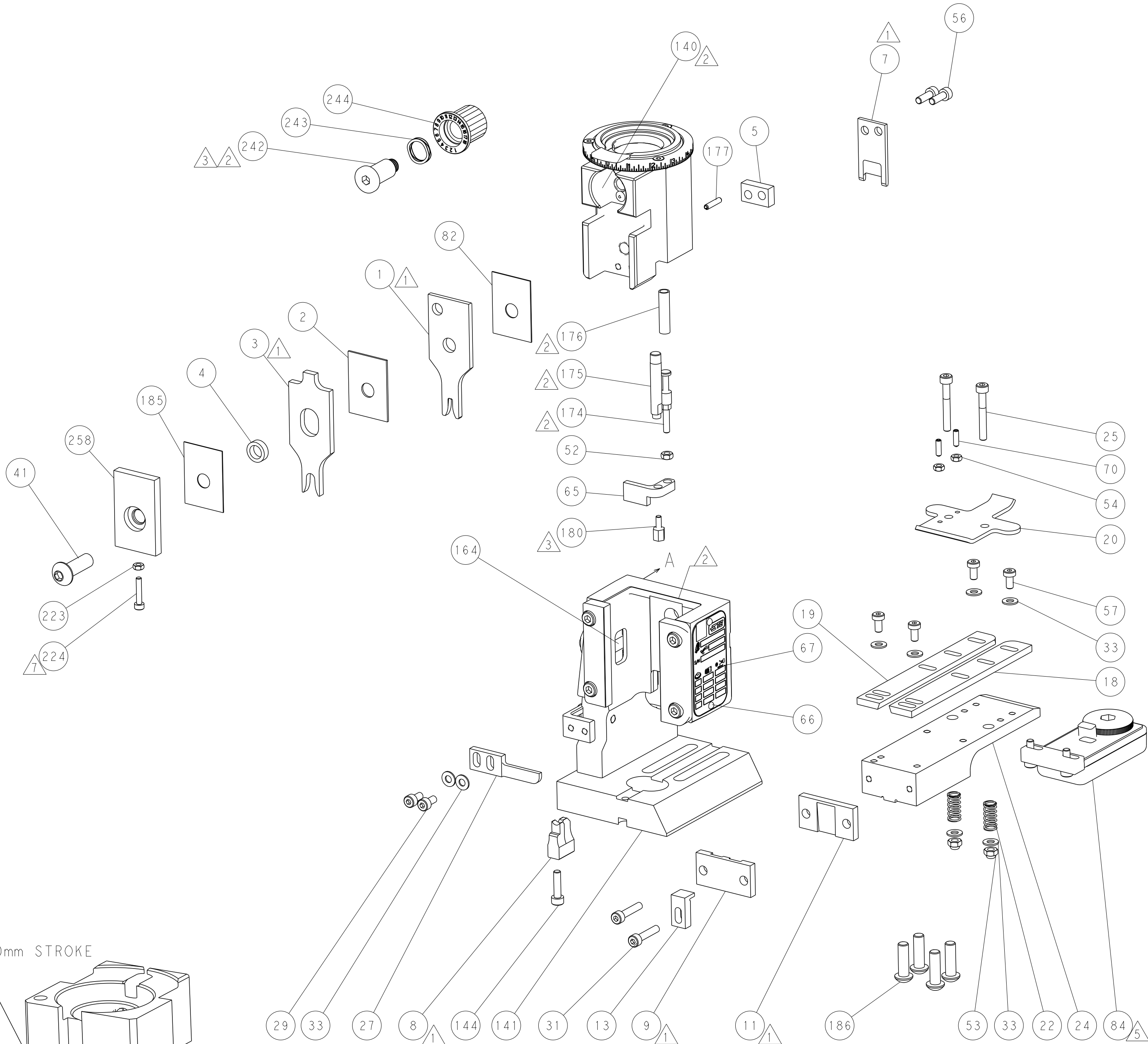
LOC		DIST		REVISIONS			
A	66	P	LTR	DESCRIPTION	DATE	DWN	APVD
		-		SEE SHEET 1	-	-	-



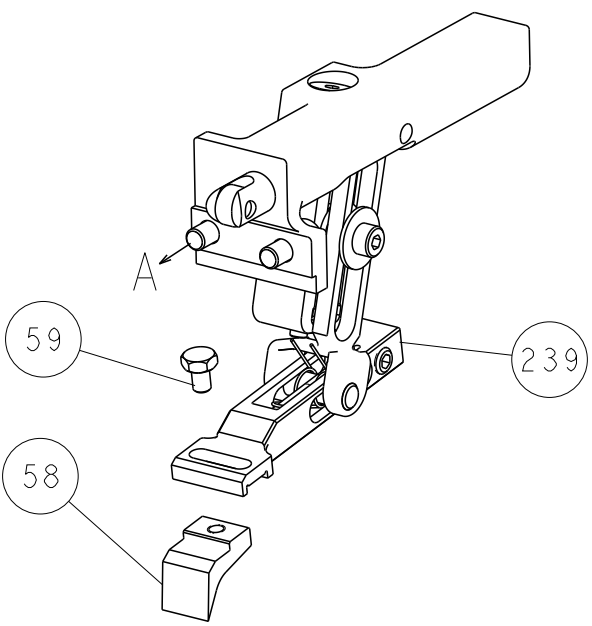
RAM AND HOLDDOWN SET-UP



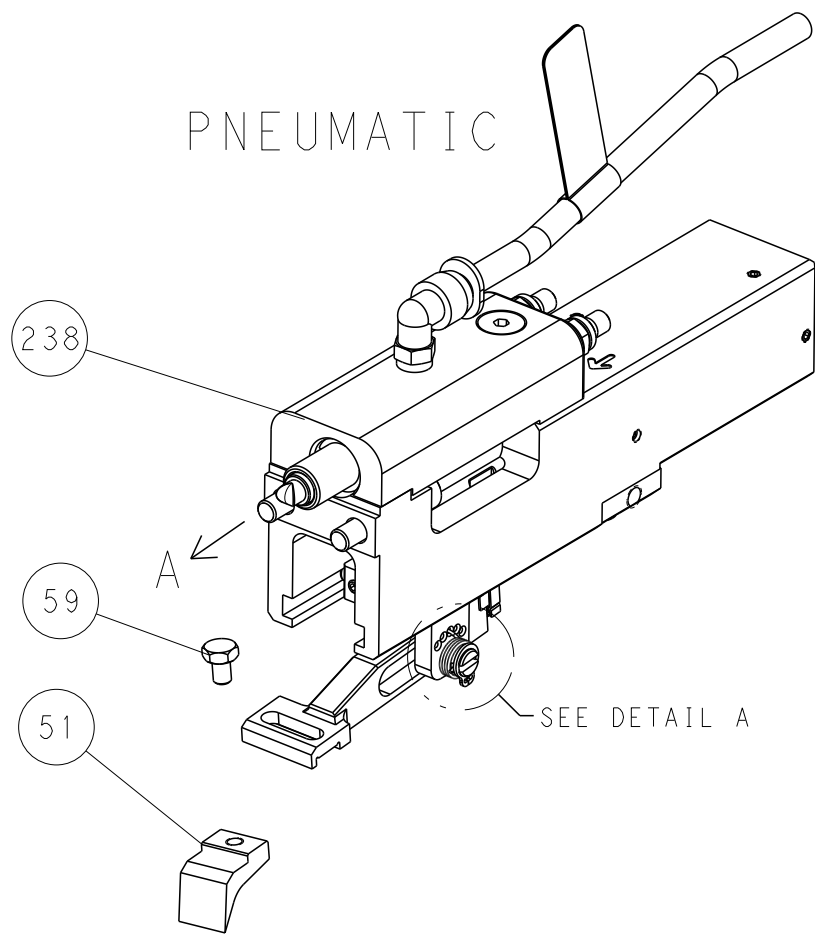
SEAL SCREW SET-UP



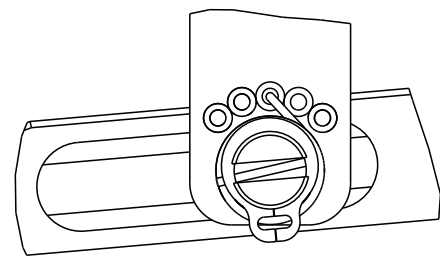
FEED TYPE
MECHANICAL



PNEUMATIC

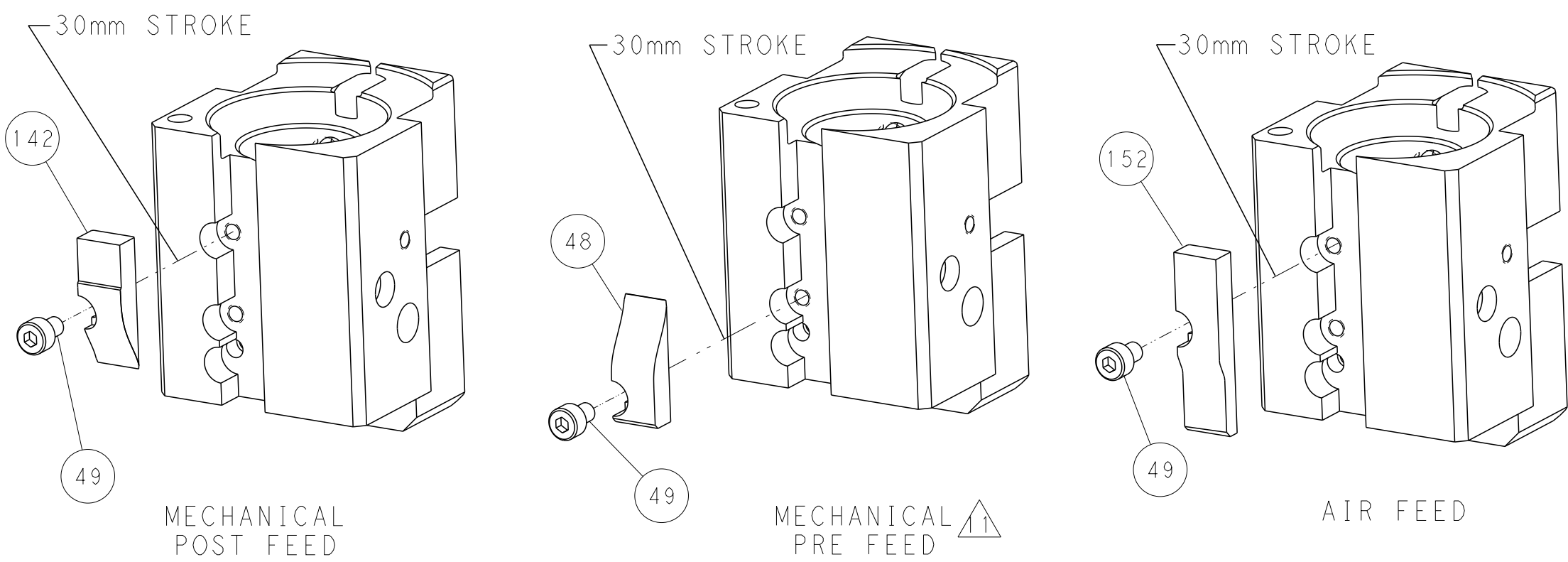


FEED SPRING
SETTING POSITION



DETAIL A

CAM POSITIONS



PACIFIC VERSION
Shown on sheets 3 of 4 & 4 of 4
(Atlantic version shown on sheets 1 of 4 & 2 of 4)

THIS DRAWING IS UNPUBLISHED. IT IS SUBJECT TO CHANGE WITHOUT NOTICE. IT IS THE RESPONSIBILITY OF THE USER TO VERIFY THE LATEST REVISIONS. IT IS THE RESPONSIBILITY OF THE USER TO VERIFY THE LATEST REVISIONS.				DWN T. BROOKS 07AUG2018	STE TE Connectivity Harrisburg, PA 17105-3608		
CHK M. HERR 07AUG2018				NAME	Ocean End Feed Applicator		
APVD T. ELBIN 07AUG2018				PRODUCT SPEC	-		
APPLICATION SPEC				SIZE	CAGE CODE	DRAWING NO	RESTRICTED TO
MATERIAL				WEIGHT	A1	00779 C=2150945	-
Customer Accessible Production Drawing				SCALE	1:1	SHEET 4 OF 4	REV B

Mouser Electronics

Authorized Distributor

Click to View Pricing, Inventory, Delivery & Lifecycle Information:

[TE Connectivity:](#)

[2150945-1](#)