

ATLANTIC VERSION TERMINATOR INTERFACE ADAPTER. APPLICATOR STYLE CONVERSION CHART. Table with columns: PART NUMBER, REVISION, DESCRIPTION, FEED TYPE, CONVERT TO, PART NUMBERS REQUIRED.

APPLICATOR DATA. Table with columns: CRIMP, SIZE, TYPE. WIRE 2.97 mm [.117], INSUL 3.90 mm [.154].

TERMINAL DATA: ESCUBEDO TERMINAL. TERMINAL NAME: TERMINAL. WIRE STRIP LENGTH, INSULATION DIAMETER RANGE. TERMINAL APPLICATION SPECIFICATION. TERMINALS APPLIED table.

WIRE SIZE, CRIMP HEIGHT mm [INCH], CRIMP HEIGHT REFERENCE SETTING. Table with columns: WIRE SIZE, CRIMP HEIGHT, CRIMP HEIGHT REFERENCE SETTING.



- RECOMMENDED SPARE PARTS
GREASE BEARING SURFACES LIGHTLY
LUBRICATE DAILY PER THE APPLICATOR INSTRUCTION SHEET SUPPLIED WITH THE APPLICATOR.
APPLICATOR SPECIFIC DATA TO BE ENTERED INTO BLANK MEMORY CHIP AT ASSEMBLY.
ADJUSTMENT OF THE STRIPPER MAY BE REQUIRED WHEN MOVING THE APPLICATOR BETWEEN BENCH AND LEADMAKER APPLICATIONS.
APPLY PART NUMBER 1-23419-5 LOCTITE TO THREADS OF ITEMS 62 & 180.

*WARNING
ON INSTALLATION, SET WIRE DISC, ITEM 40 TO LARGEST WIRE SIZE SETTING. USE OF SETTINGS BELOW MINIMUM REQUIRED CRIMP HEIGHT SETTING WILL CAUSE DAMAGE TO CRIMP TOOLING.

Table with columns: PART NO, DESCRIPTION, ITEM NO. Rows include APPLICATOR SHIM PACK, O-RING, PUSH ROD, BUSHING, FEED CAM, DETENT PIN, SPRING, RAM, AMP STYLE, CAM, SNAIL, WASHER.

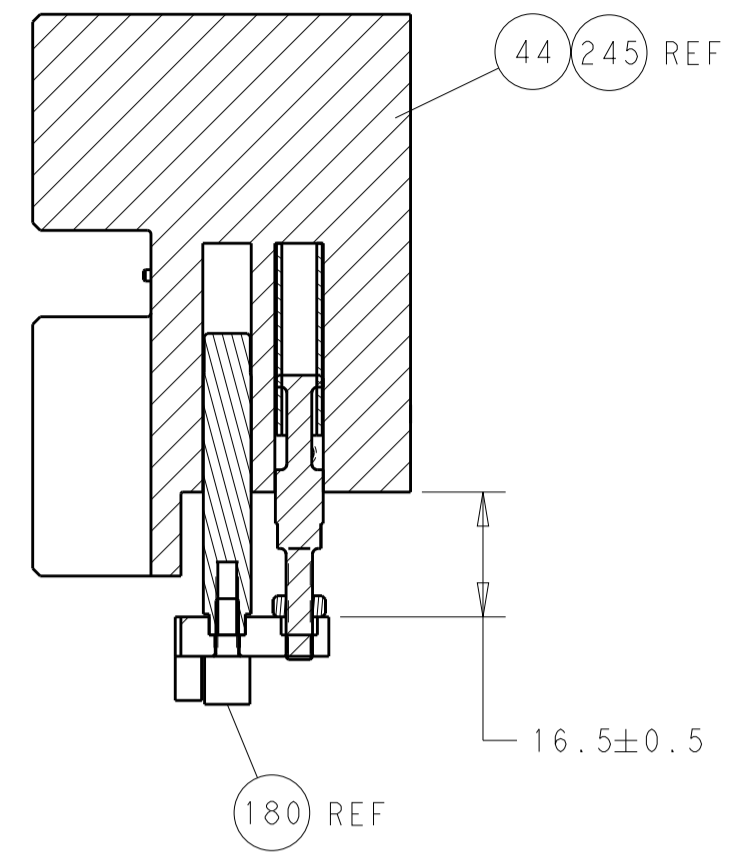
ATLANTIC VERSION
Shown on sheets 1 of 4 & 2 of 4
(Pacific version shown on sheets 3 of 4 & 4 of 4)

REVISIONS table. Columns: REVISION, DESCRIPTION, DATE, DWN, APVD.

Main parts list table. Columns: P, LTM, A, DESCRIPTION, DATE, DWN, APVD. Includes items like RETAINER, SHCS, MECHANICAL FEED ASSEMBLY, AIR FEED MODULE, FEED FINGER ASSEMBLY, STANDOFF, PIN, SPRING, GUIDE PIN, MAGNET, COUNTER, SPRING, PIN, SCR, SHCS, NUT, TORQUE, PAWL, SCR, FEED CAM, APPLICATOR BASIC ASSEMBLY, RAM, AMP STYLE, DISC, APPLICATOR SHIM PACK, FA HEAD, BOLT, WASHER, SCR, STRIPPER, STUD, PLATE, SPRING, DRAG, GUIDE, SCR, SPACER, PLATE, ANVIL, BLADE, SLUG, SPACER, BLOCK, CRIMPER, SPACER, CRIMPER, CRIMPER.

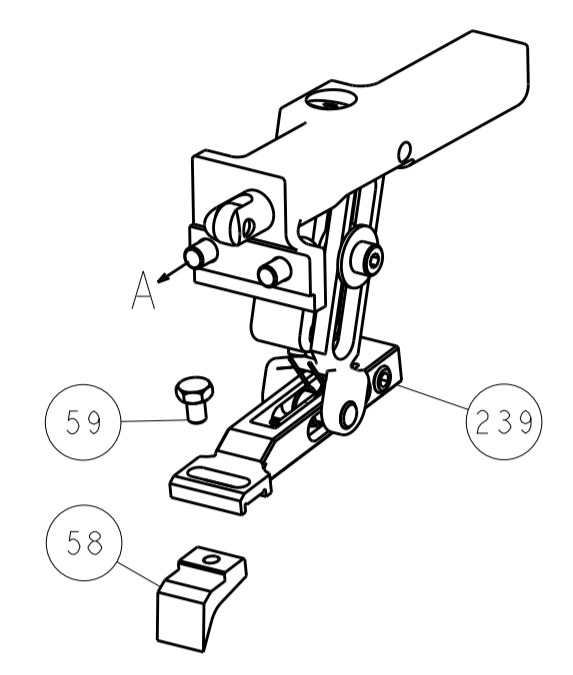
Customer Accessible Production Drawing. Includes dimensions, tolerances, material, weight, and drawing information.

LOC		DIST		REVISIONS			
A	66	P	LTM	DESCRIPTION	DATE	DWN	APVD
				SEE SHEET 1			

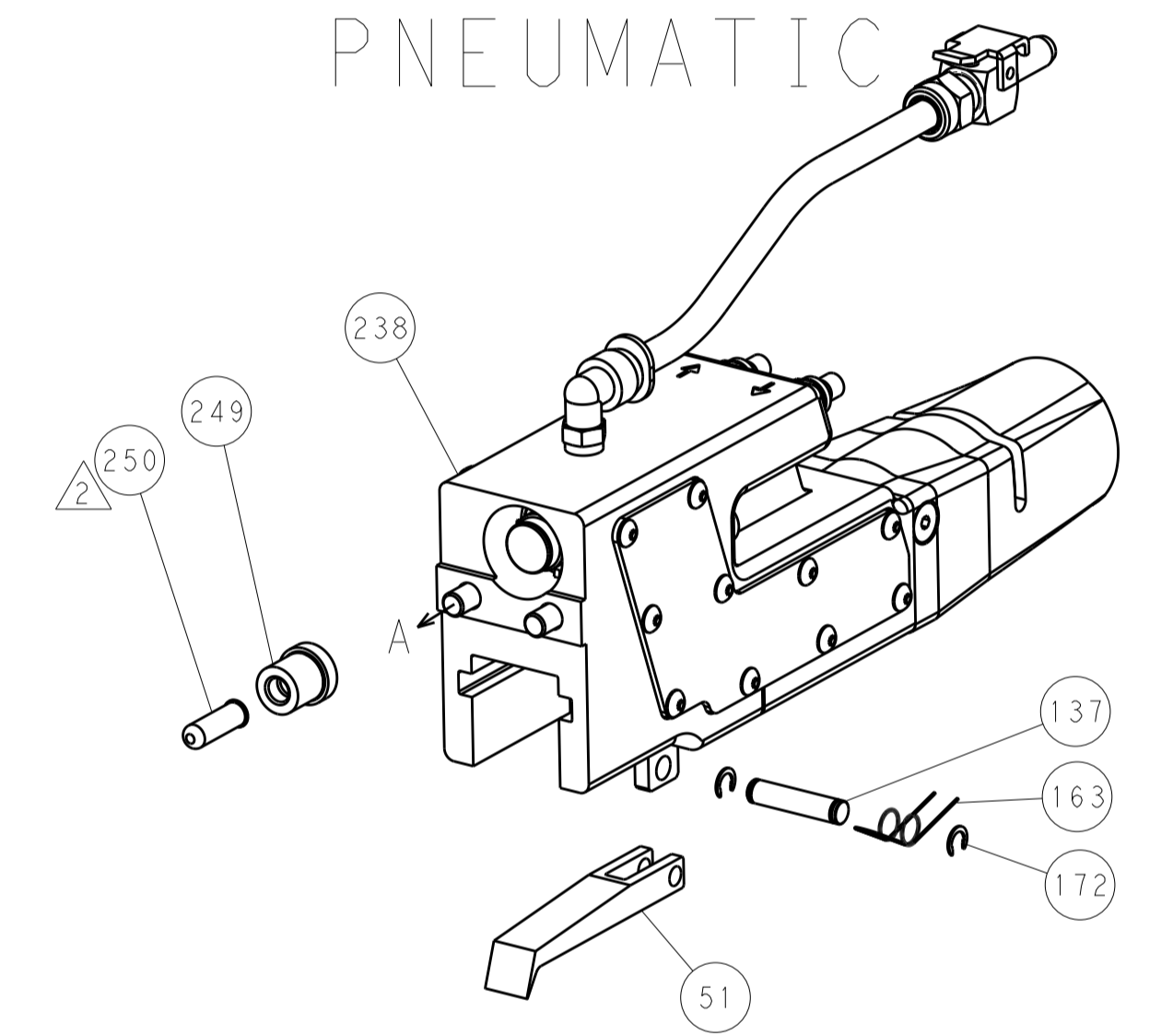


HOLDDOWN SET-UP

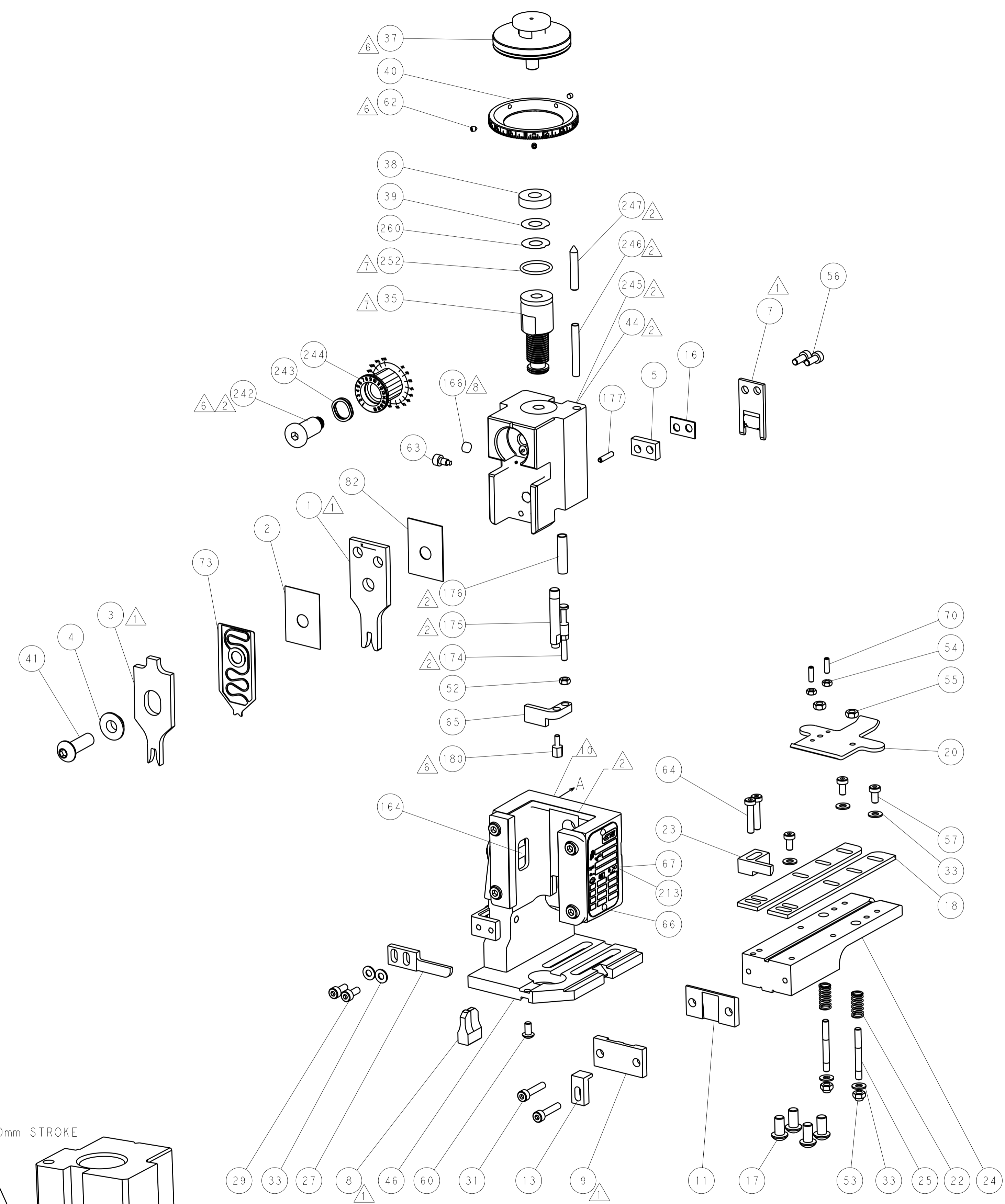
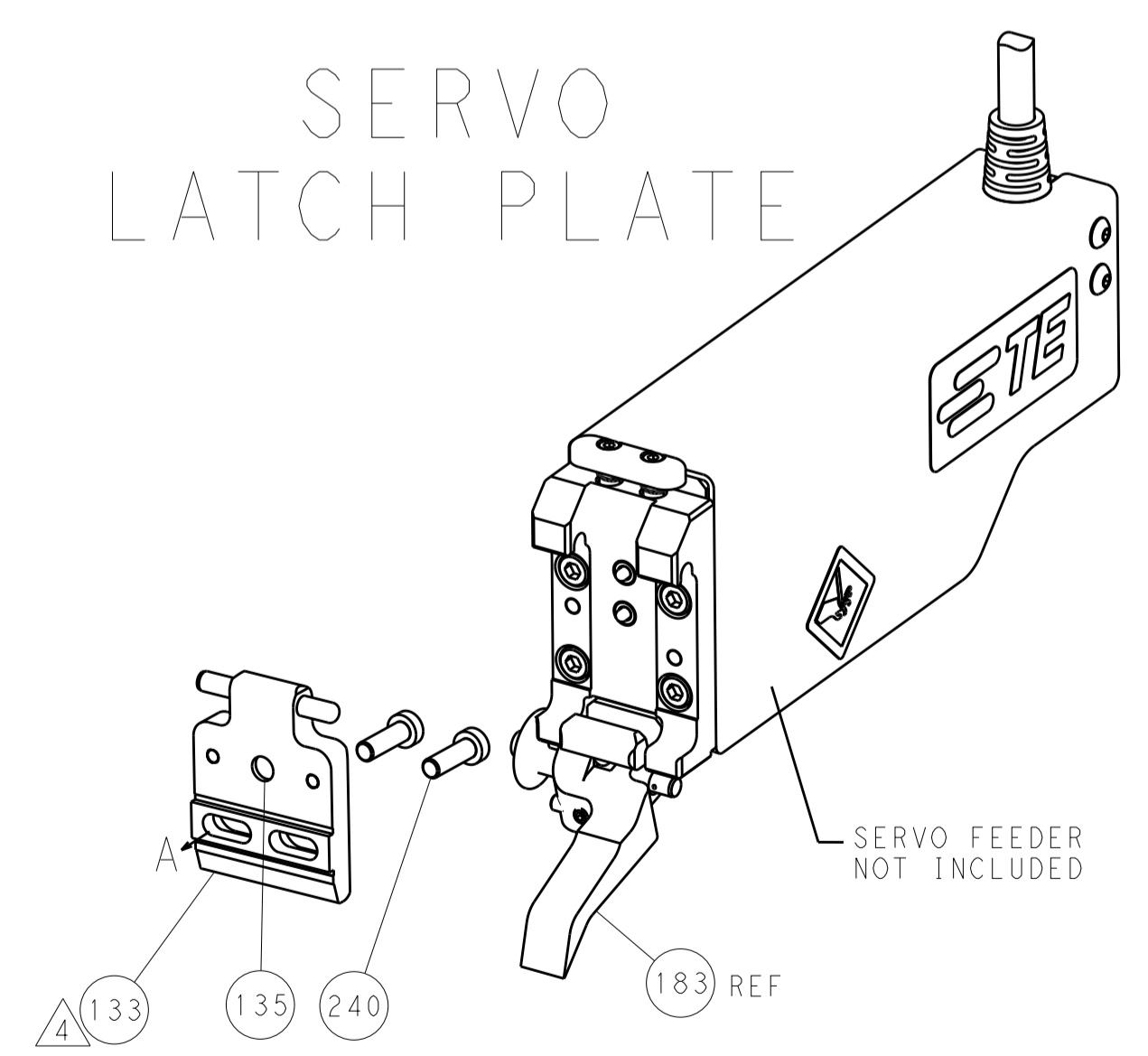
FEED TYPE
MECHANICAL



PNEUMATIC



SERVO
LATCH PLATE



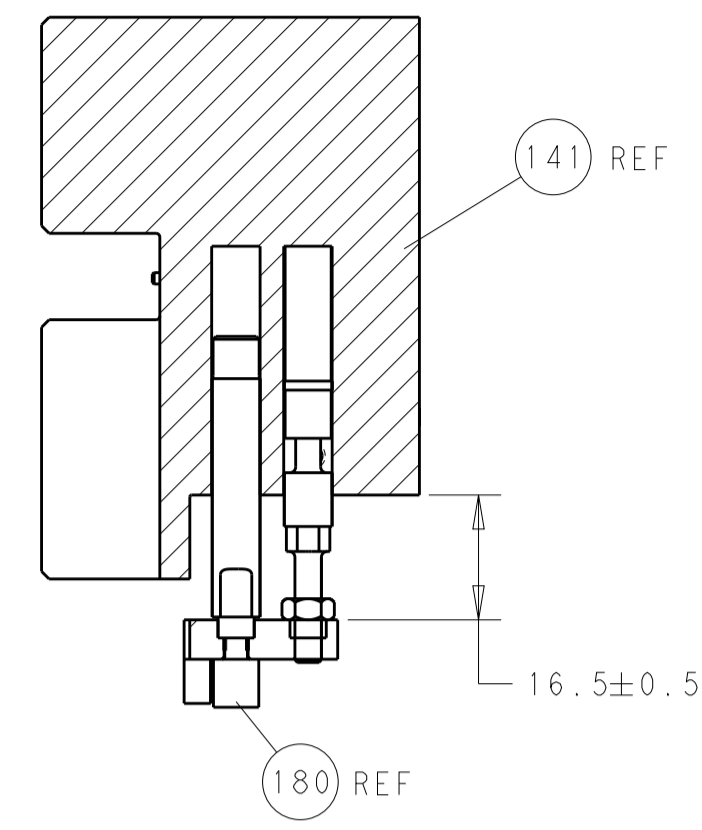
CAM POSITIONS



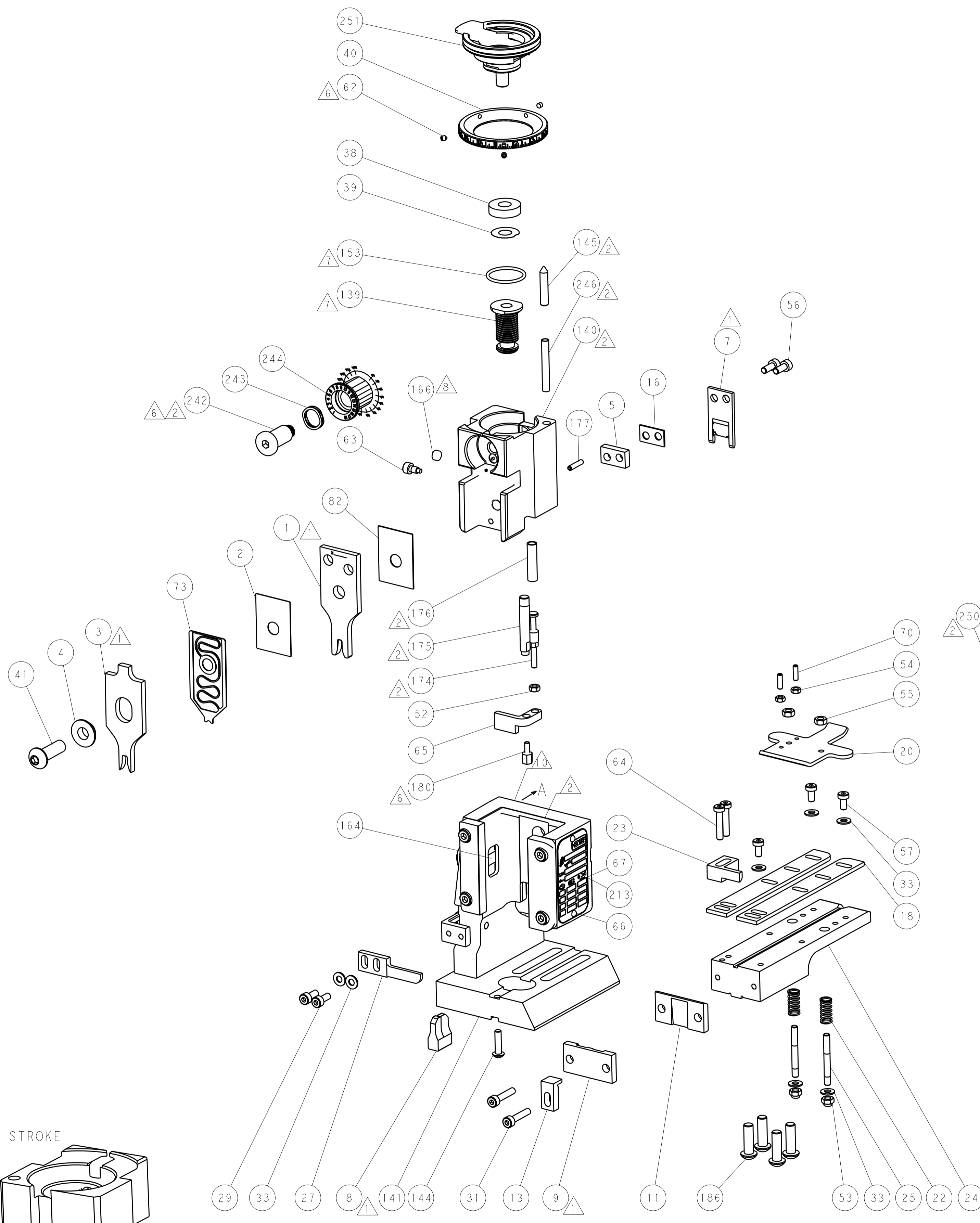
ATLANTIC VERSION
 Shown on sheets 1 of 4 & 2 of 4
 (Pacific version shown on sheets 3 of 4 & 4 of 4)

DIMENSIONS: mm 		TOLERANCES UNLESS OTHERWISE SPECIFIED: 0 PLC ± 1 PLC ± 2 PLC ± 3 PLC ± 4 PLC ± ANGLES ± FINISH		DWN: J. HOU 07JAN2016 CHK: L. ZHANG 07JAN2016 APVD: H. GUO 07JAN2016		NAME: Ocean End Feed Applicator SIZE: A1 CAGE CODE: 00779 DRAWING NO: 2150635		RESTRICTED TO: - SCALE: 1:1 SHEET: 2 OF 4 REV: A	
MATERIAL: - FINISH: -				WEIGHT: - PRODUCT SPEC: - APPLICATION SPEC: -		TE Connectivity Harrisburg, PA 17105-3608		Customer Accessible Production Drawing	

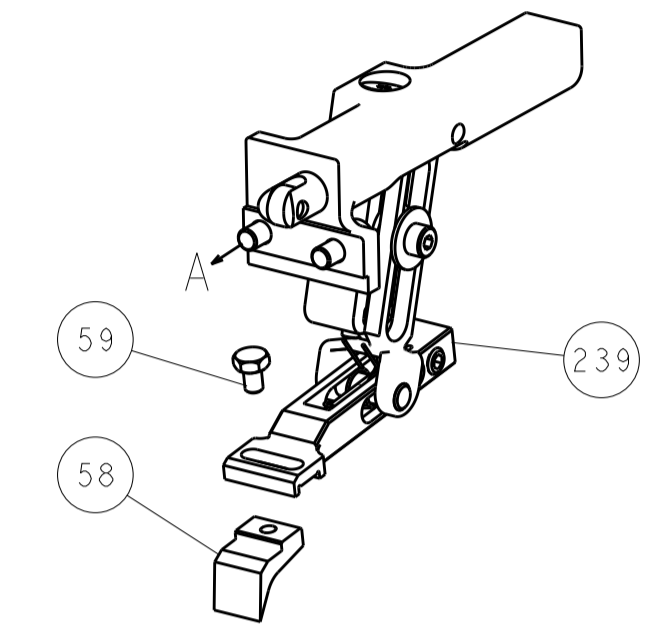
LOC		DIST		REVISIONS			
A	66	P	LTM	DESCRIPTION	DATE	DWN	APVD
		-	-	SEE SHEET 1	-	-	-



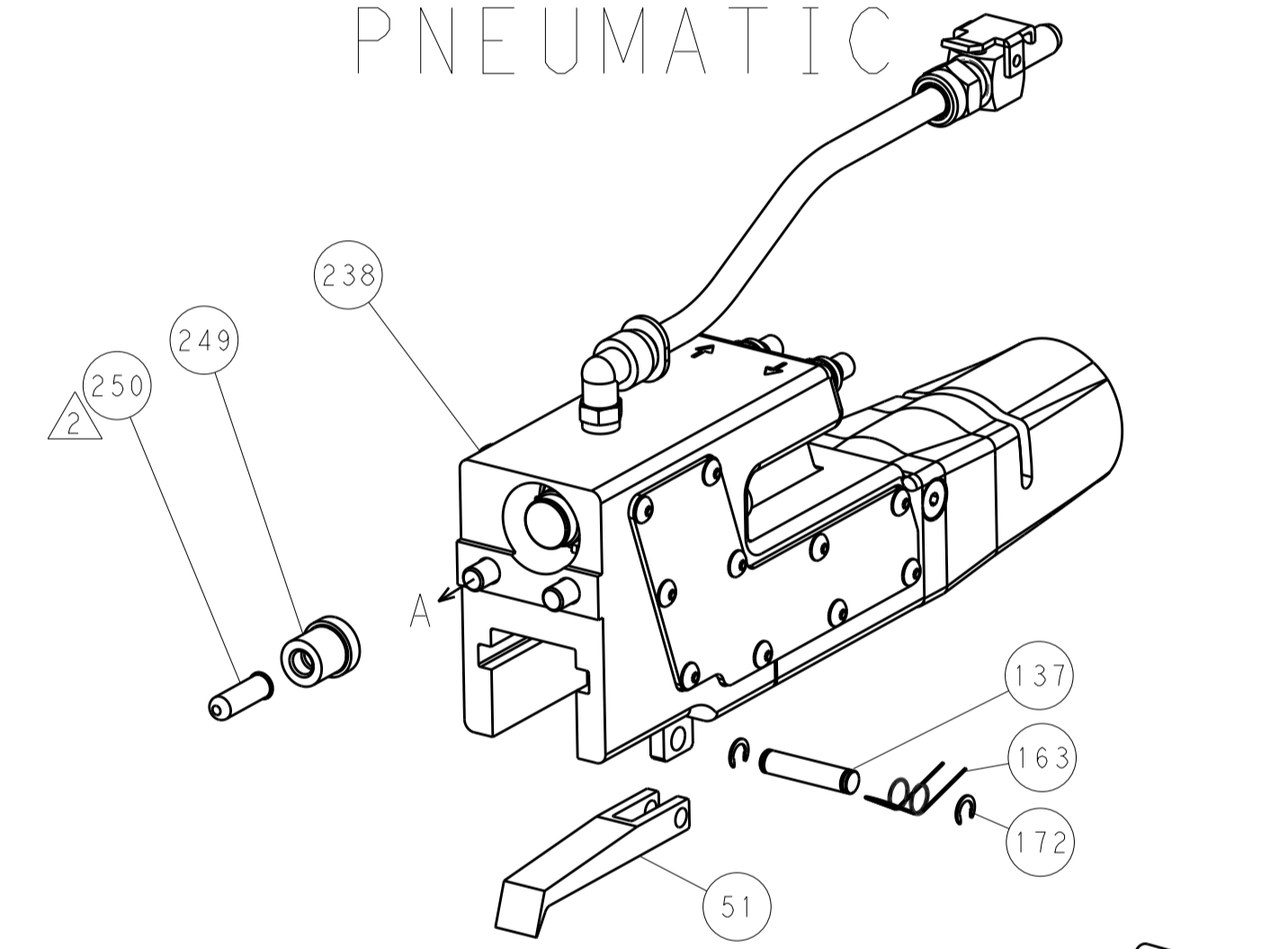
HOLDDOWN SET-UP



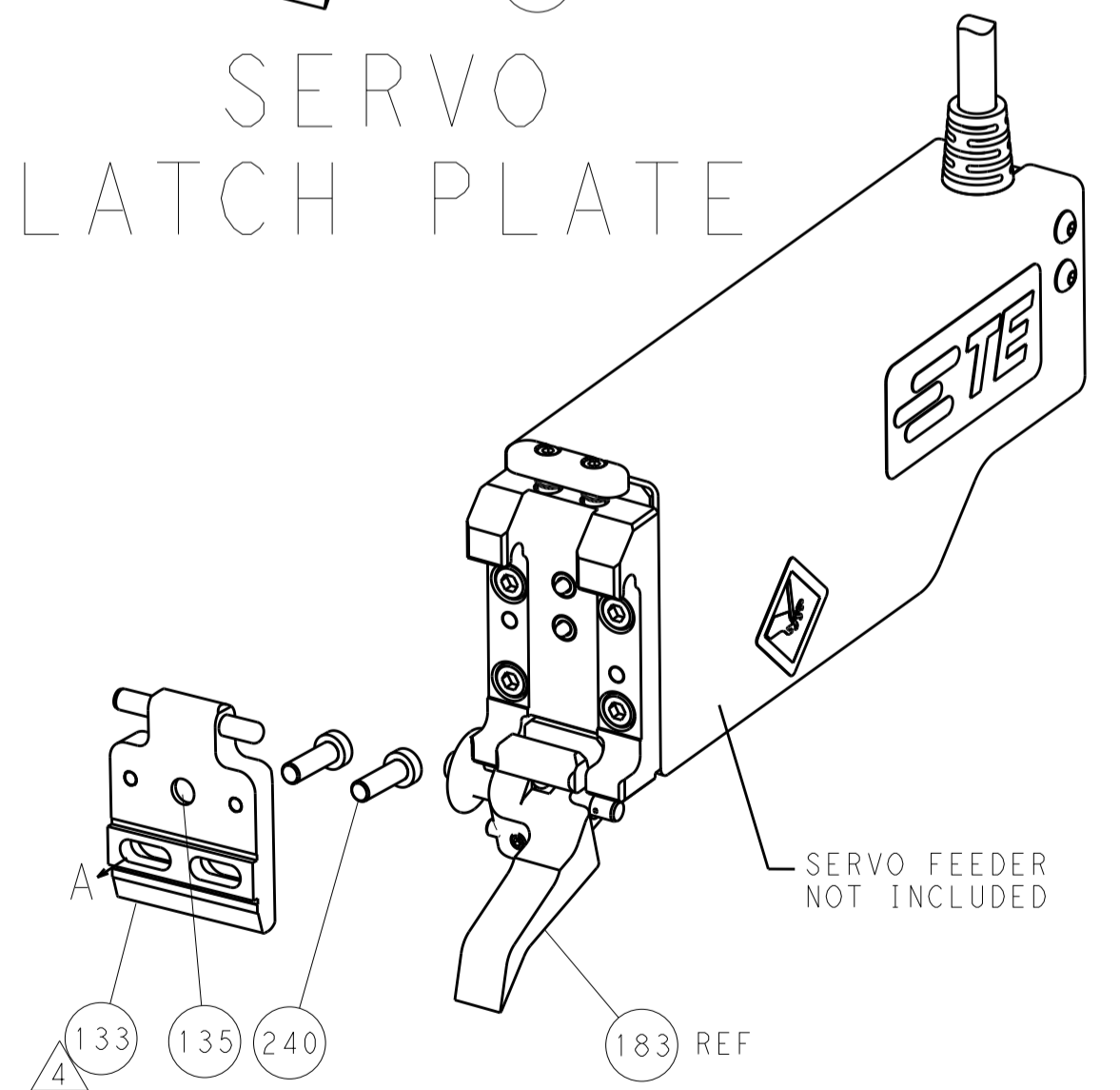
FEED TYPE
MECHANICAL



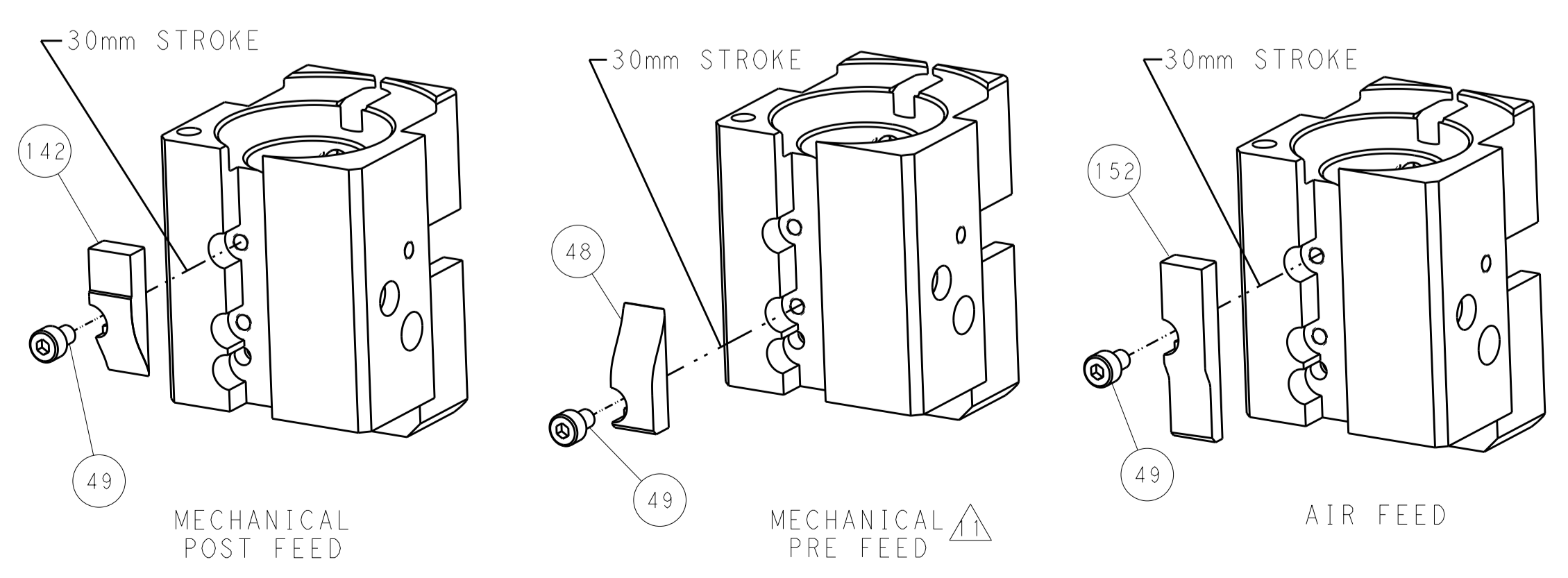
PNEUMATIC



SERVO
LATCH PLATE



CAM POSITIONS



PACIFIC VERSION
Shown on sheets 3 of 4 & 4 of 4
(Atlantic version shown on sheets 1 of 4 & 2 of 4)

DIMENSIONS:		TOLERANCES UNLESS OTHERWISE SPECIFIED:		DWN: J. HOU 07JAN2016		STE TE Connectivity Harrisburg, PA 17105-3608	
mm	0 PLC ±	1 PLC ±	2 PLC ±	3 PLC ±	4 PLC ±	APVD: L. ZHANG 07JAN2016	NAME: Ocean End Feed Applicator
MATERIAL:		FINISH:		WEIGHT:		SIZE: CAGE CODE: DRAWING NO: A1 00779 ©=2150635	
Customer Accessible Production Drawing				SCALE: 1:1		SHEET 4 OF 4 REV A	

Mouser Electronics

Authorized Distributor

Click to View Pricing, Inventory, Delivery & Lifecycle Information:

[TE Connectivity:](#)

[2150635-2](#)