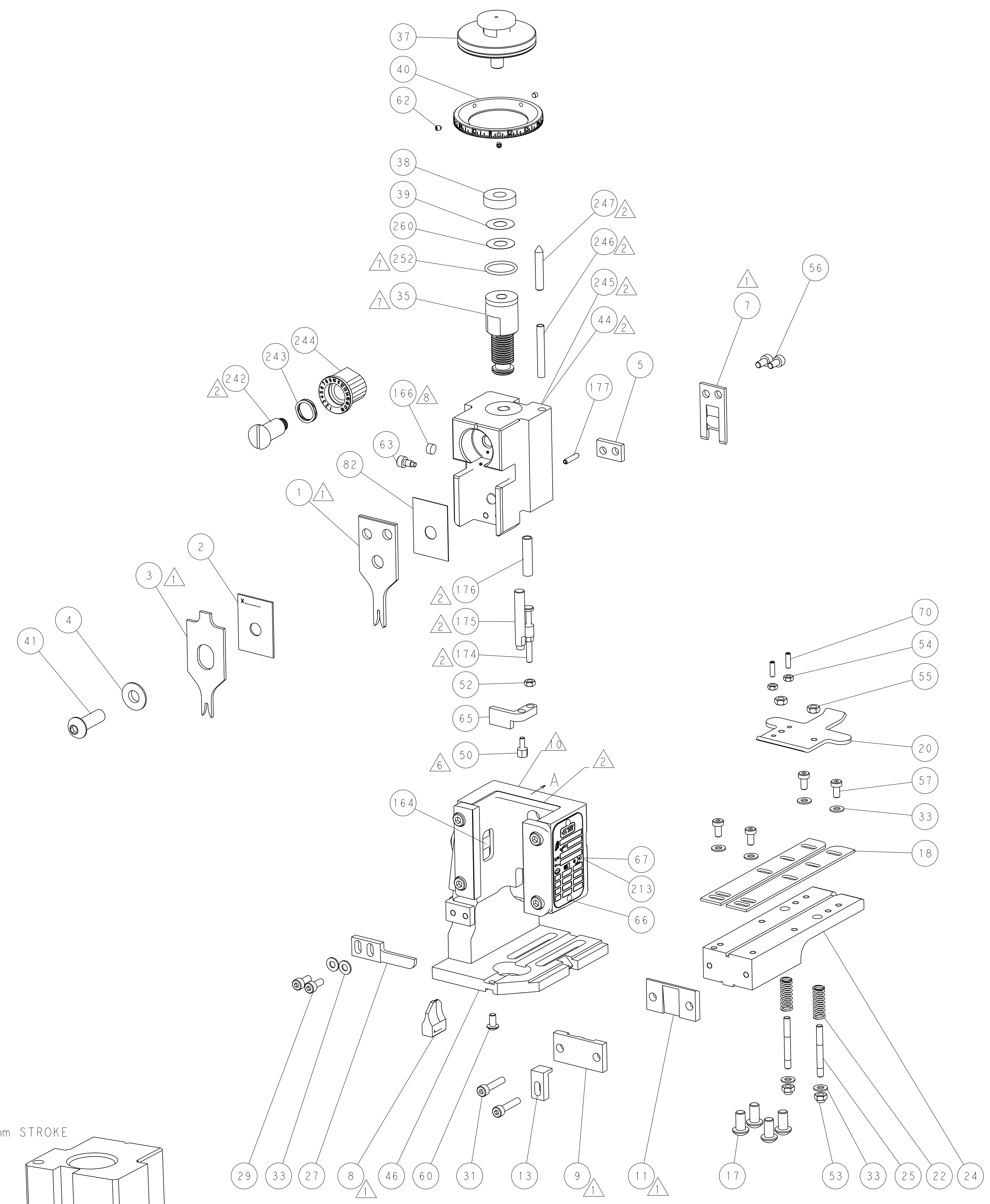
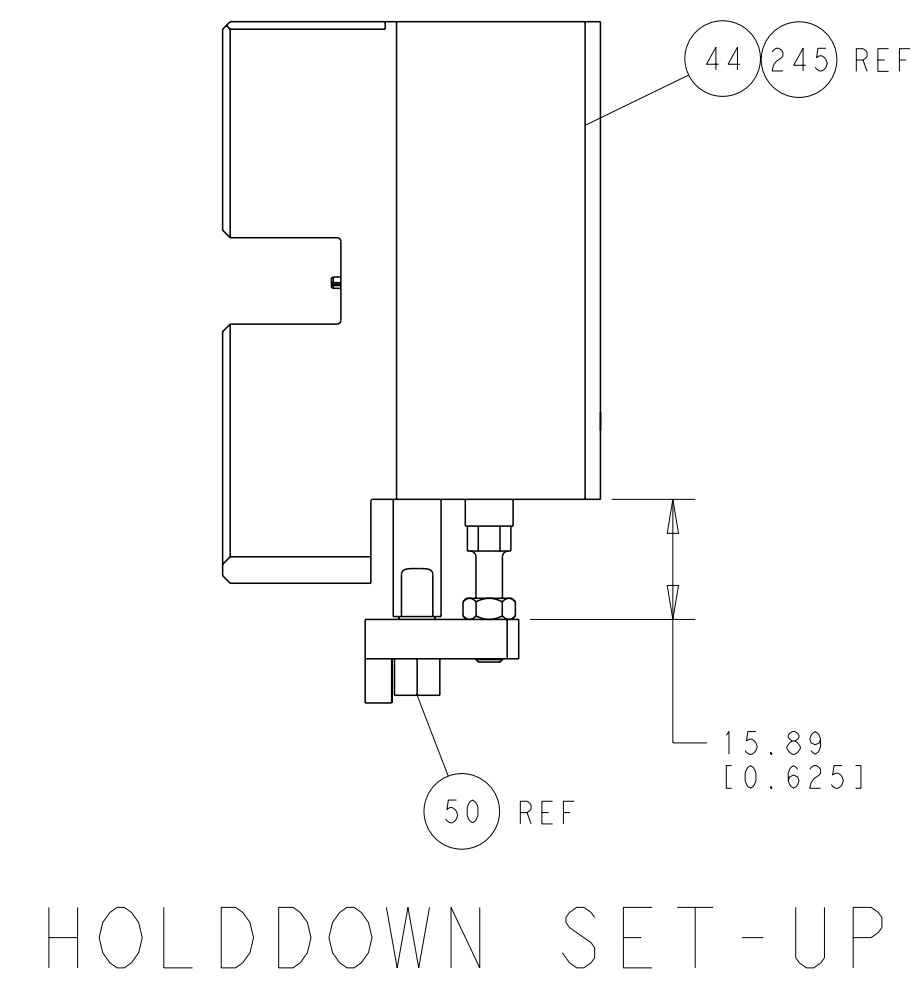
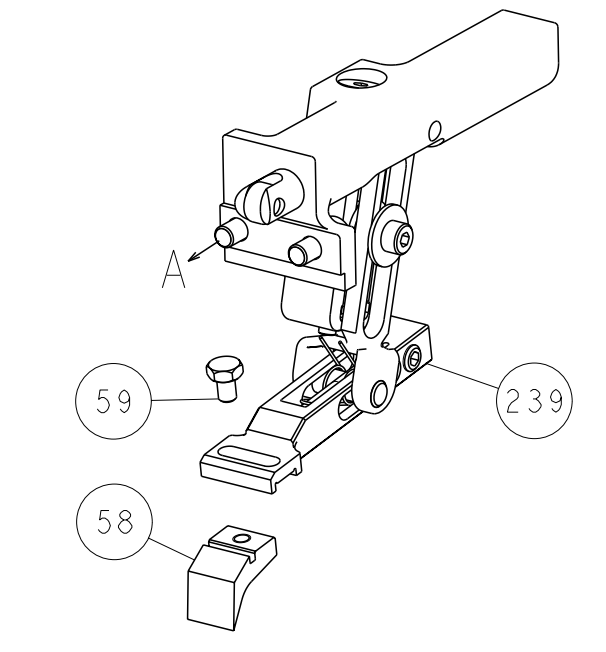




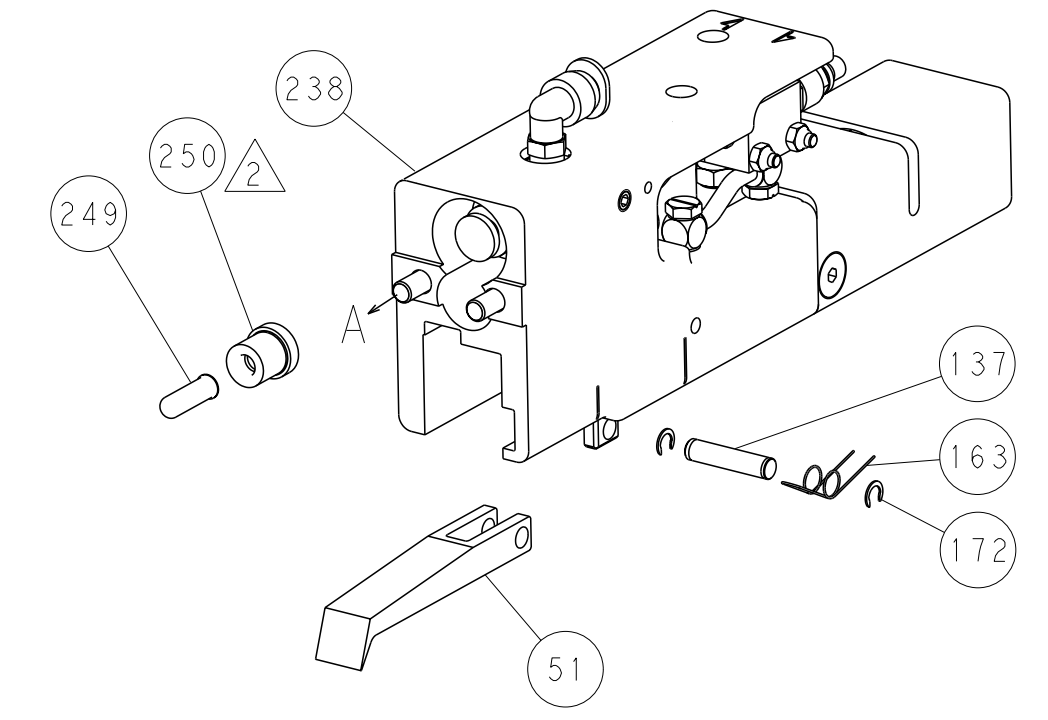
| LOC | DIST | REV | DESCRIPTION | DATE | BY | APPD |
|-----|------|-----|-------------|------|----|------|
| A   | 66   |     | SEE SHEET 1 |      |    |      |



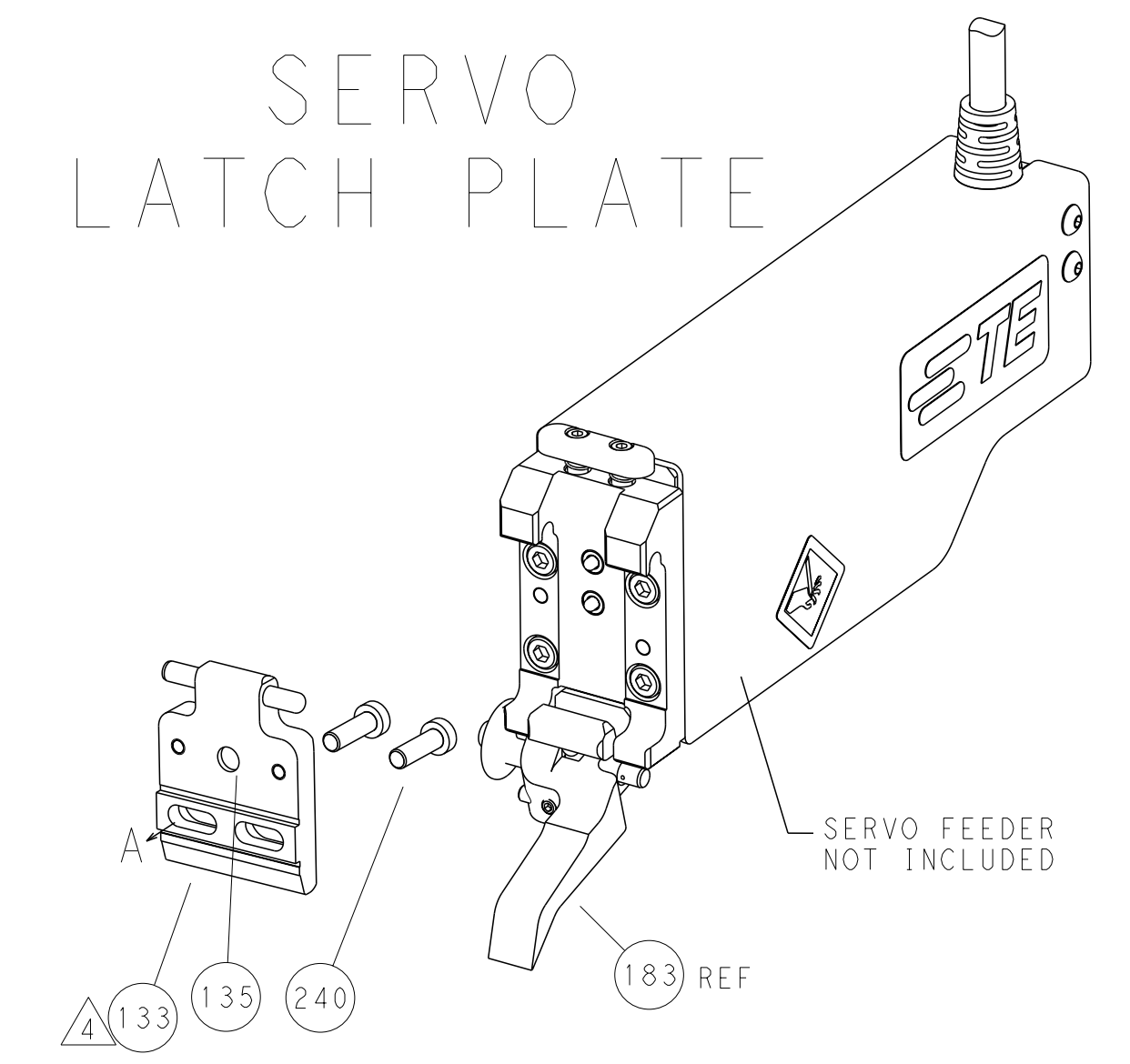
FEED TYPE  
MECHANICAL



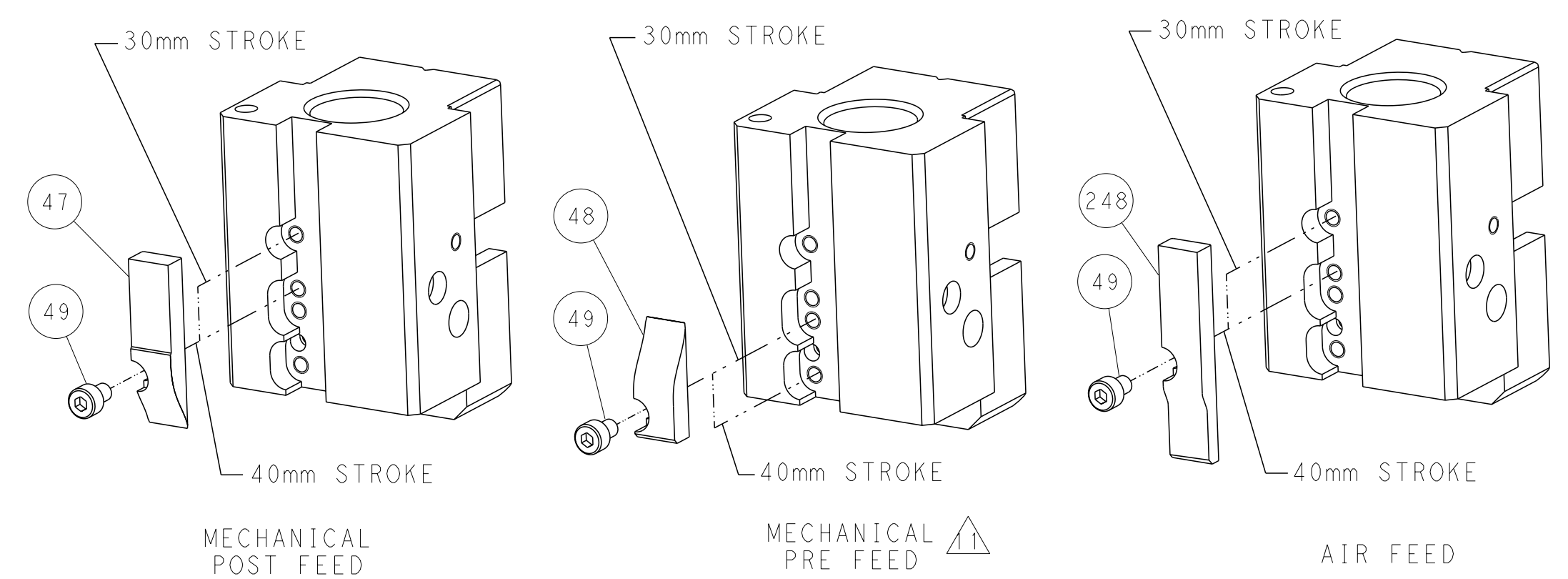
PNEUMATIC



SERVO  
LATCH PLATE



CAM POSITIONS



ATLANTIC VERSION  
 Shown on sheets 1 of 4 & 2 of 4  
 (Pacific version shown on sheets 3 of 4 & 4 of 4)

|  |  |   |  |  |  |  |  |
|--|--|---|--|--|--|--|--|
| DIMENSIONS:<br>mm                      |  | TOLERANCES UNLESS OTHERWISE SPECIFIED:<br>9 PLC ±.5<br>1 PLC ±0.5<br>2 PLC ±0.13<br>3 PLC ±0.013<br>4 PLC ±0.001<br>ANGLES ±. |  | DWN B. WEAVER 22NOV2011<br>CHK K. STAKEM 22NOV2011<br>APVD G. BAILEY 22NOV2011 |  | NAME<br>Ocean End Feed Applicator                |  |
| MATERIAL:                              |  | FINISH:   |  | WEIGHT:  |  | SIZE CAGE CODE DRAWING NO<br>A11 00779 C-2150222 |  |
| CUSTOMER ACCESSIBLE PRODUCTION DRAWING |  |   |  | SCALE 1:1  |  | SHEET 2 OF 4 REV B                               |  |

Table with columns: PART NUMBER, REVISION, DESCRIPTION, FEED TYPE, CONVERT TO, PART NUMBERS REQUIRED. Includes a diagram of the Pacific Version Terminator Interface Adapter.

APPLICATOR DATA table with columns: CRIMP, SIZE, TYPE for WIRE and INSUL.

Terminal Data: G.H./LEAR TERMINAL TE CRIMP SPEC. Includes tables for Terminal Name, Wire Strip Length, Insulation Diameter Range, Terminal Application Specification, and Terminals Applied.

Table with columns: WIRE SIZE, CRIMP HEIGHT mm [INCH], CRIMP HEIGHT REFERENCE SETTING.

- Recommended Spare Parts
Grease bearing surfaces lightly
Lubricate daily per the applicator instruction sheet supplied with the applicator.
Applicator specific data to be entered into blank memory chip at assembly.
Adjustment of the stripper may be required when moving the applicator between bench and leadmaker applications.
Apply part number 1-23419-5 Loctite to threads of item 50.
Grease threads, groove and O-ring on items 139 & 153.
Magnet, item 166 must be oriented correctly in order to properly actuate the counter.
Crimp height reference setting was the setting used when the applicator was qualified at the factory.
Spare feed cam storage location refer to instruction sheet for additional information.
The recommended set-up for end feed applicators is post-feed with item 2119653-1.

\*WARNING
ON INSTALLATION, SET WIRE DISC, ITEM 40 TO LARGEST WIRE SIZE SETTING. USE OF SETTINGS BELOW MINIMUM REQUIRED CRIMP HEIGHT SETTING WILL CAUSE DAMAGE TO CRIMP TOOLING.

Table with columns: PART NO, DESCRIPTION, ITEM NO.

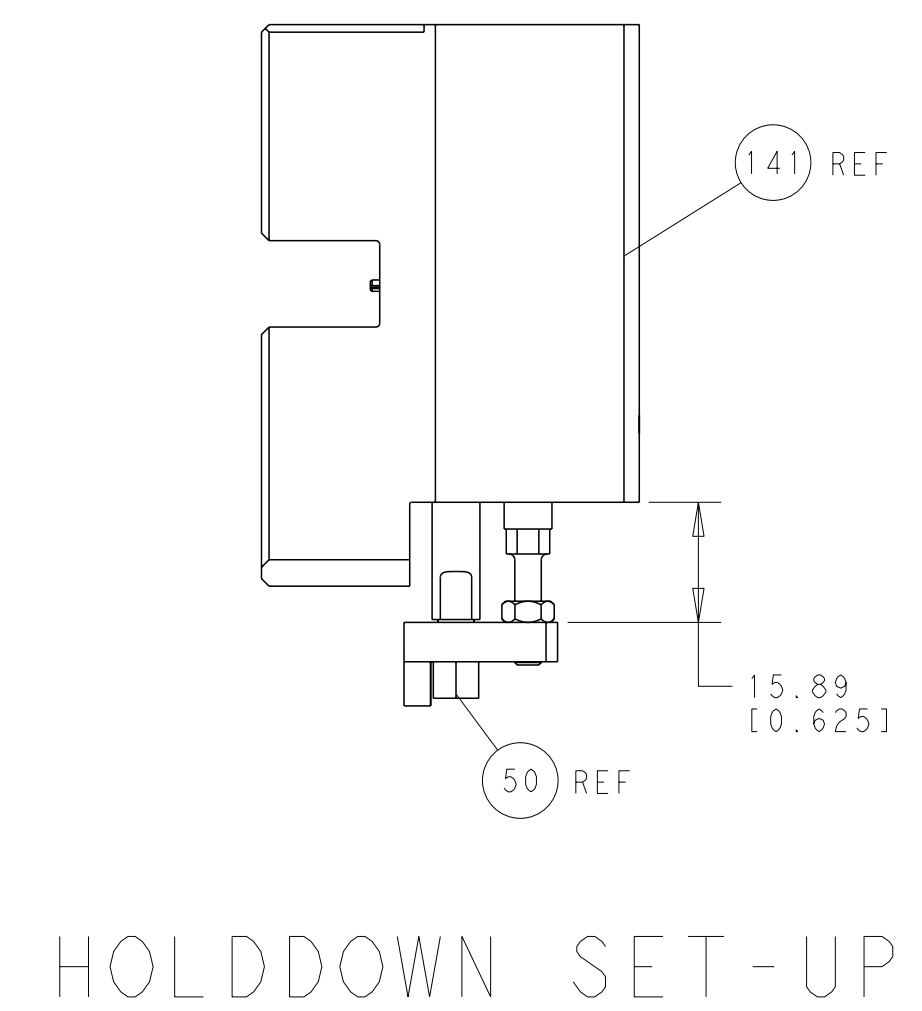
PACIFIC VERSION
Shown on sheets 3 of 4 & 4 of 4
(Atlantic version shown on sheets 1 of 4 & 2 of 4)

Revisions table with columns: REVISIONS, DESCRIPTION, DATE, DWN, APVD.

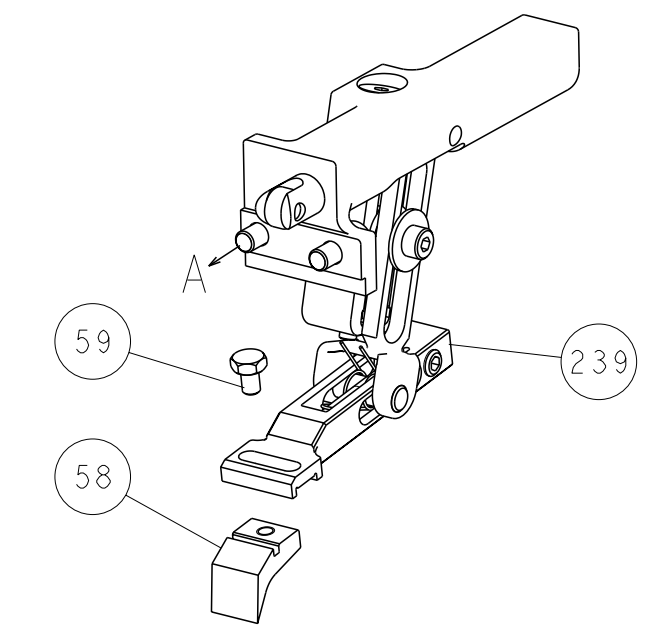
Large table listing various components and their quantities, including items like BUSHING, SPRING, CAM, SNAIL, WASHER, RETAINER, SHCS, MECHANICAL FEED ASSEMBLY, AIR FEED MODULE, TAG, IDENTIFICATION, etc.

Technical drawing information including dimensions, tolerances, materials, finishes, weights, and customer accessible production drawing details.

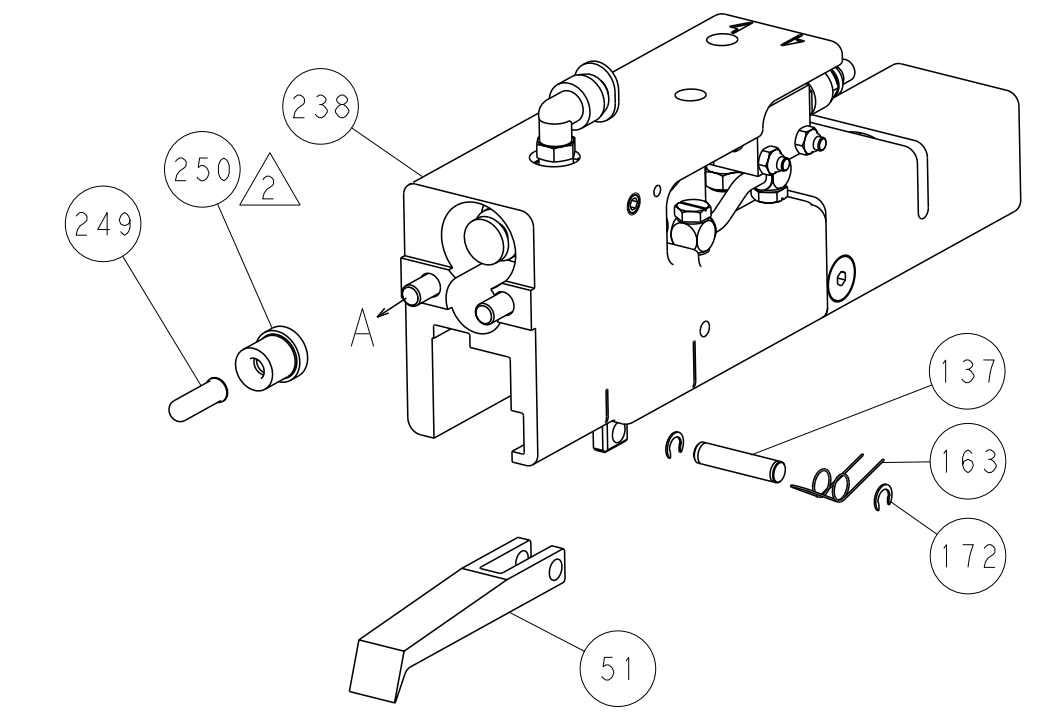
| LOC | DIST | REV | DESCRIPTION | DATE | OWN | APVD |
|-----|------|-----|-------------|------|-----|------|
| A   | 66   |     | SEE SHEET 1 |      |     |      |



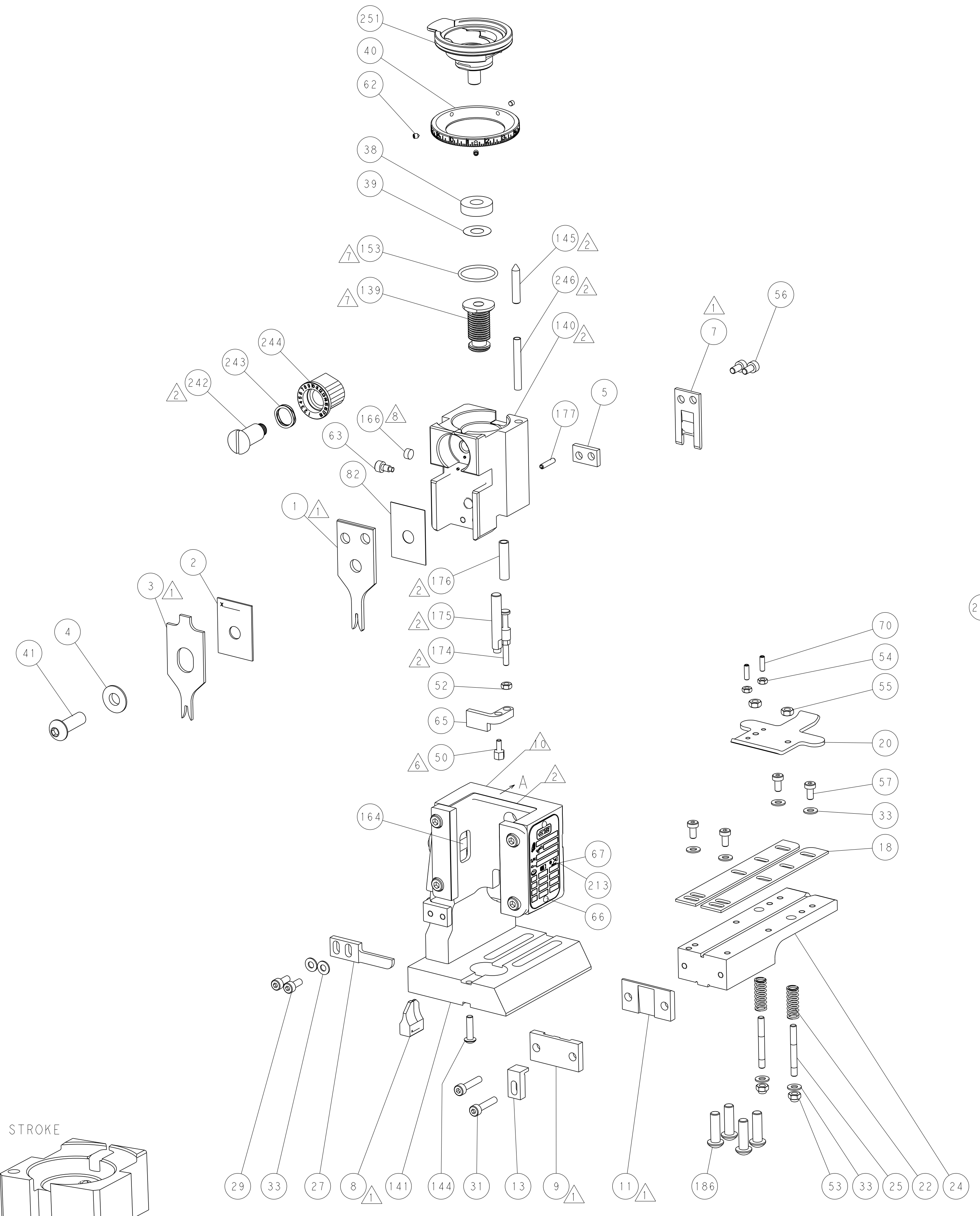
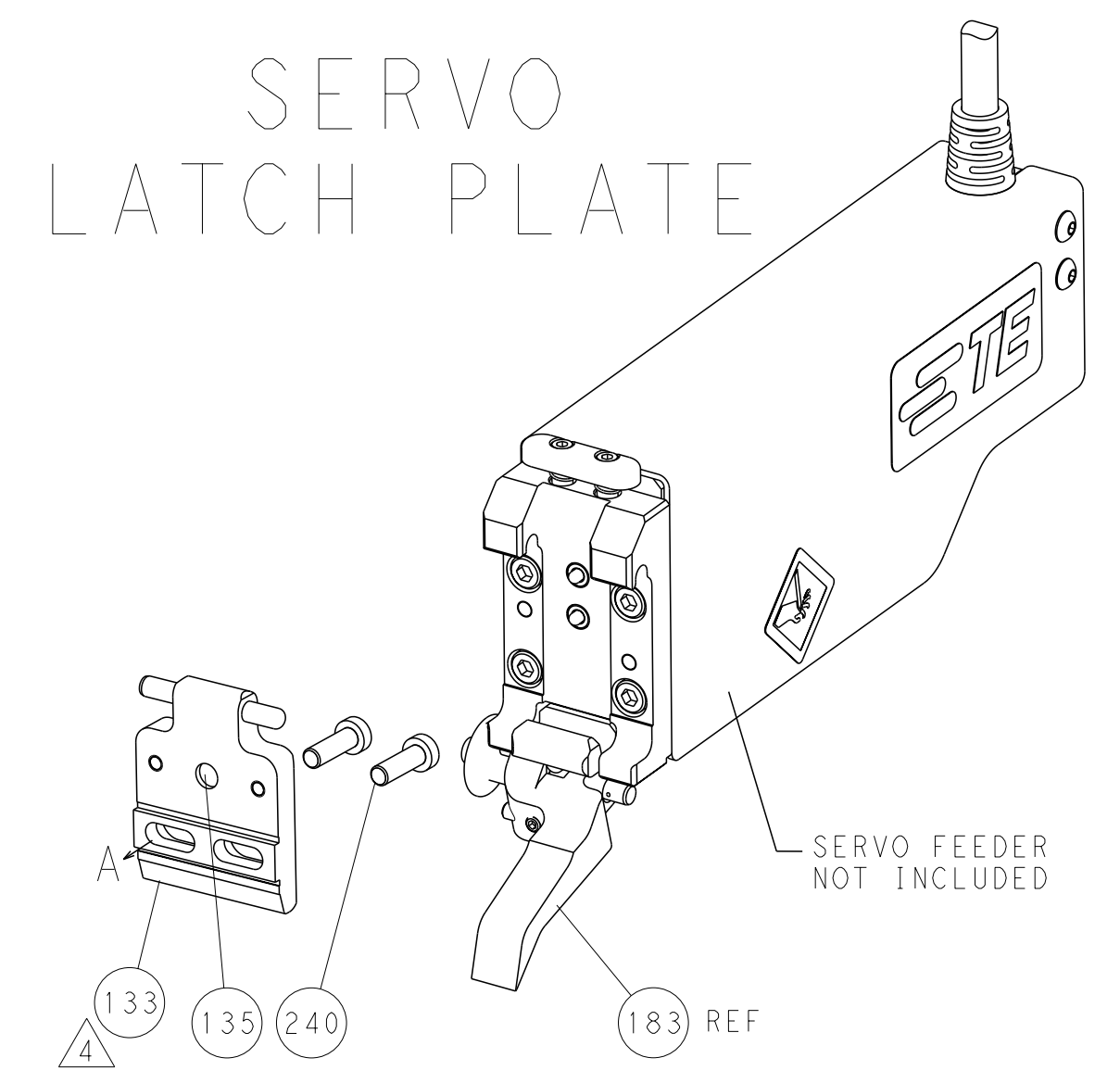
FEED TYPE  
MECHANICAL



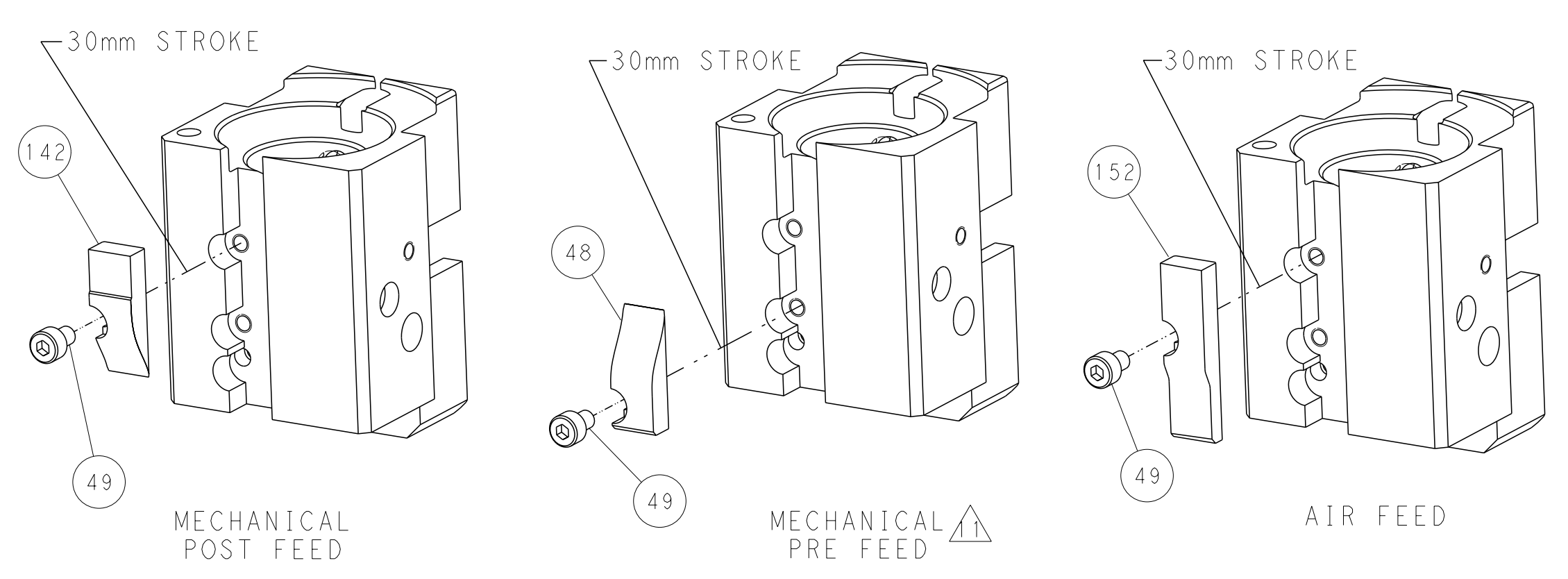
PNEUMATIC



SERVO  
LATCH PLATE



CAM POSITIONS



PACIFIC VERSION  
 Shown on sheets 3 of 4 & 4 of 4  
 (Atlantic version shown on sheets 1 of 4 & 2 of 4)

|   |  |   |  |
|---|--|---|--|
| <small>THIS DRAWING IS A CONTROLLED TECHNOLOGY INFORMATION PRODUCT. IT IS THE PROPERTY OF TYCO ELECTRONICS CORPORATION. IT IS TO BE KEPT IN CONFIDENTIALITY AND NOT TO BE REPRODUCED OR TRANSMITTED IN ANY FORM OR BY ANY MEANS, ELECTRONIC OR MECHANICAL, INCLUDING PHOTOCOPYING, RECORDING, OR BY ANY INFORMATION STORAGE AND RETRIEVAL SYSTEM, WITHOUT THE WRITTEN PERMISSION OF TYCO ELECTRONICS CORPORATION. THIS PERMISSION IS GRANTED TO THE USER OF THIS DRAWING FOR THE USER'S OWN USE ONLY. THIS PERMISSION DOES NOT CONSTITUTE AN ENDORSEMENT OR A WARRANTY OF ANY KIND.</small> |  | DWN: B. WEAVER 22NOV2011<br>CHK: K. STAKEM 22NOV2011<br>APVD: G. BAILEY 22NOV2011       | NAME: TE Connectivity<br>Harrisburg, PA 17105-3608 |
| DIMENSIONS: mm<br>TOLERANCES UNLESS OTHERWISE SPECIFIED:<br>9 PLC ±.5<br>1 PLC ±0.5<br>2 PLC ±0.13<br>3 PLC ±0.13<br>4 PLC ±0.013<br>5 PLC ±0.001<br>ANGLES ±.1<br>FINISH:  |  | PRODUCT SPEC:<br>APPLICATION SPEC:<br>WEIGHT:<br>CUSTOMER ACCESSIBLE PRODUCTION DRAWING | SCALE: 1:1<br>SHEET: 4 OF 4<br>REV: B              |

# Mouser Electronics

Authorized Distributor

Click to View Pricing, Inventory, Delivery & Lifecycle Information:

[TE Connectivity:](#)

[2150222-2](#)