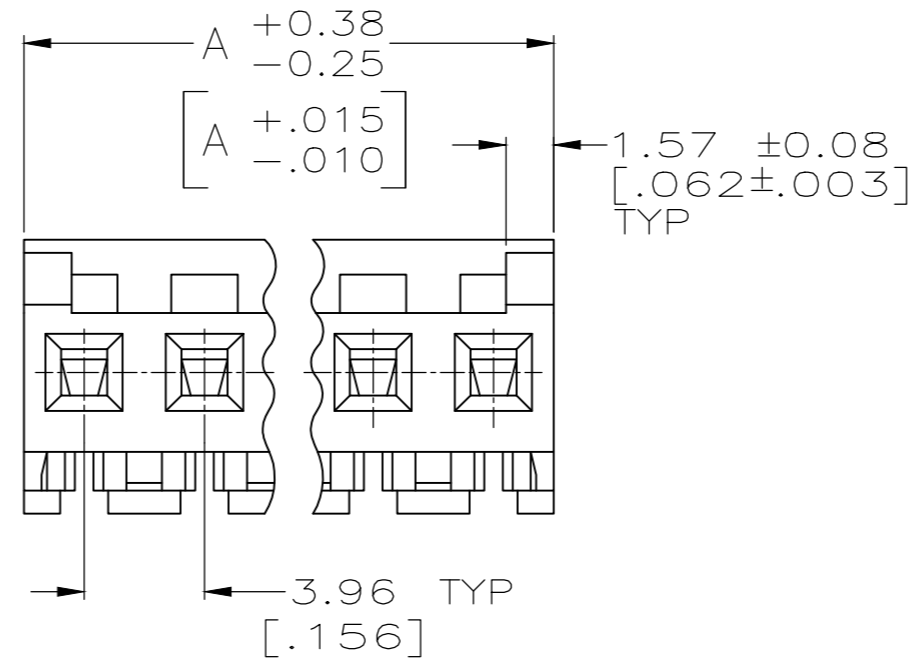
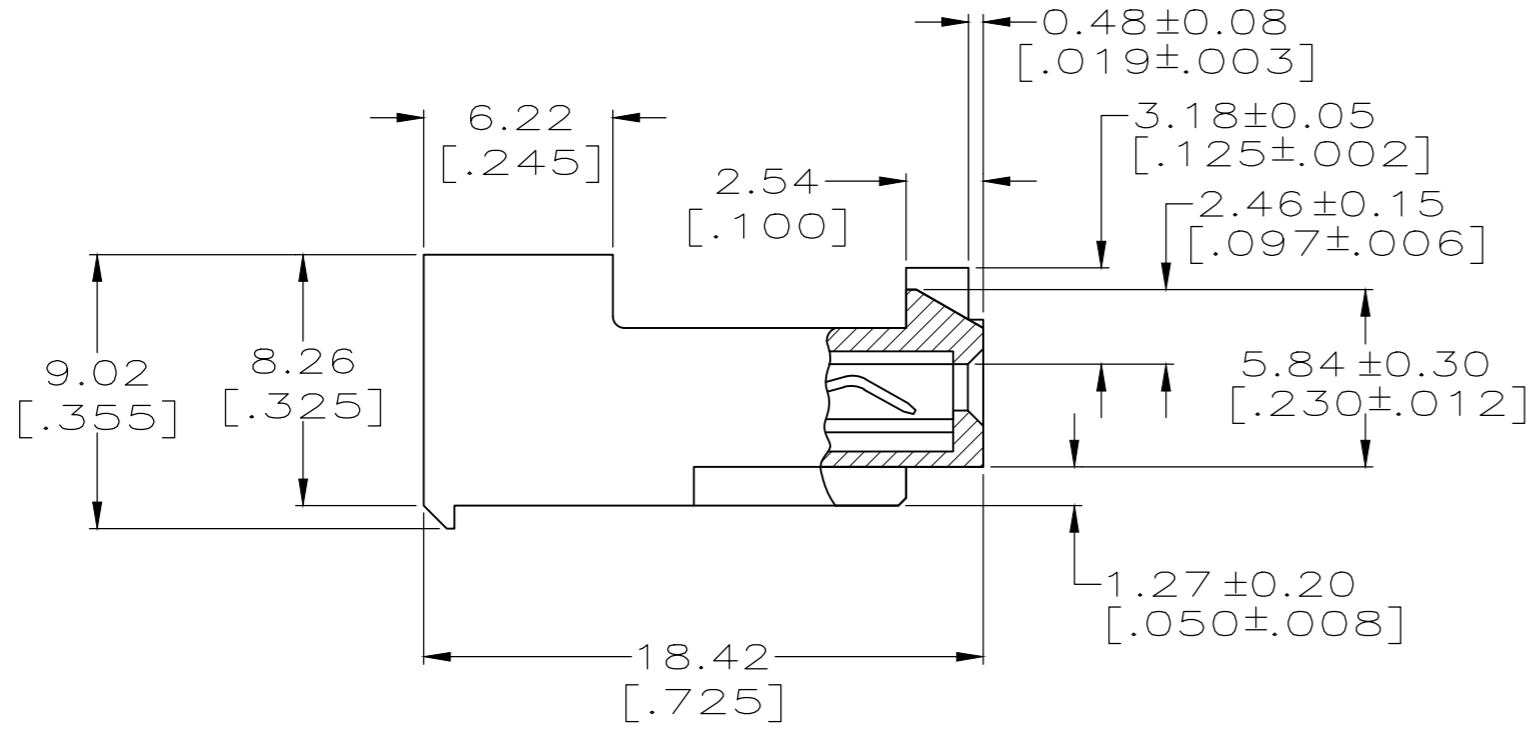
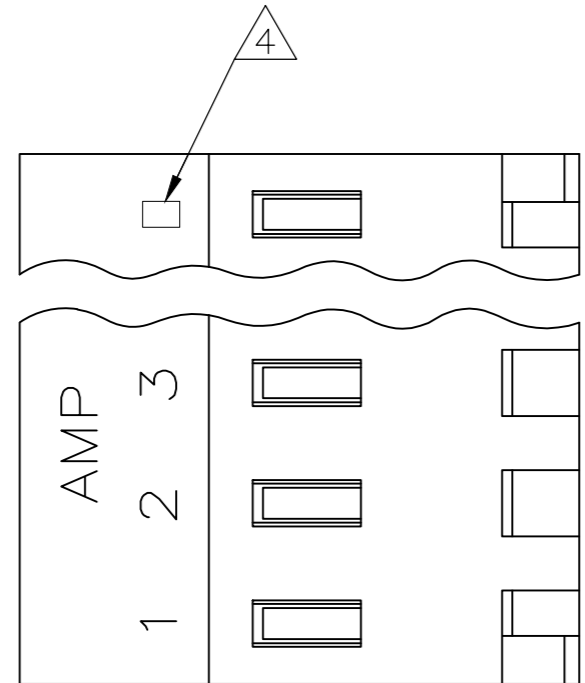


THIS DRAWING IS UNPUBLISHED. RELEASED FOR PUBLICATION  
 © COPYRIGHT - By - TE CONNECTIVITY ALL RIGHTS RESERVED.

| LOC | DIST | REVISIONS   |                           |           |        |
|-----|------|-------------|---------------------------|-----------|--------|
| P   | LTR  | DESCRIPTION | DATE                      | DWN       | APVD   |
| CM  | 0    | F1          | REVISED PER ECR-20-100206 | 13JUL2020 | BDA SW |



1 MATERIAL:  
 CONNECTOR - NYLON UL94V-2 (RED).  
 CONTACTS - 0.30[.012] THICK COPPER ALLOY.  
 PLATING - 0.00038 [.000015] GOLD THK OR 0.00008 [.000003] MIN THK GOLD FLASH OVER 0.00030 [.000012] THK PALLADIUM NICKEL PER TE CONNECTIVITY'S DISCRETION. IN CONTACT AREA.  
 0.00203[.000080] MIN THICKNESS BRIGHT TIN-LEAD IN SLOT AREA FOR 647478-2 THRU 2-647478-4 OR MATTE WHISKER MITIGATED TIN IN SLOT AREA FOR 3-647478-2 THRU 5-647478-4 OVER NICKEL UNDERPLATE.

- 2 CONTACTS ACCEPT 22 AWG WIRE WITH 2.41[.095] MAX INSULATION DIAMETER.
- 3 CONTACTS MUST ACCEPT 1.14±0.03[.045±.001] SQUARE POST AND REMAIN LOCKED IN POSITION.
- 4 IDENTIFICATION NUMBER FOR LAST CIRCUIT MAY NOT APPEAR ON ALL ASSEMBLIES.
- 5 DIMENSIONS IN BRACKETS ARE IN INCHES.
- 6 HOUSING FEATURES ARE: CLOSED END WITH LOCKING RAMP AND POLARIZING TAB.
- 7 NOTE DELETED.
- 8 NOTE DELETED.
- 9 OBSOLETE PARTS: OBSOLETE CIS STREAMLINING PER D.RENAUD/D.SINISI 9

| CONTACT FINISH | DIM A         | NO. OF CIRCUITS | PART NO.              |
|----------------|---------------|-----------------|-----------------------|
| TIN            | 47.55 [1.872] | 12              | 4-647478-2            |
|                | 43.59 [1.716] | 11              | 4-647478-1            |
|                | 39.62 [1.56]  | 10              | 4-647478-0            |
|                | 35.66 [1.404] | 9               | 3-647478-9            |
|                | 31.70 [1.248] | 8               | 3-647478-8            |
|                | 27.74 [1.092] | 7               | 3-647478-7            |
|                | 23.77 [.936]  | 6               | 3-647478-6            |
|                | 19.81 [.780]  | 5               | 3-647478-5            |
|                | 15.85 [.624]  | 4               | 3-647478-4            |
|                | 11.89 [.468]  | 3               | 3-647478-3            |
|                | 7.92 [.312]   | 2               | 3-647478-2            |
|                | TIN-LEAD      | 47.55 [1.872]   | 12                    |
| 43.59 [1.716]  |               | 11              | <del>4-647478-1</del> |
| 39.62 [1.56]   |               | 10              | <del>4-647478-0</del> |
| 35.66 [1.404]  |               | 9               | <del>3-647478-9</del> |
| 31.70 [1.248]  |               | 8               | <del>3-647478-8</del> |
| 27.74 [1.092]  |               | 7               | <del>3-647478-7</del> |
| 23.77 [.936]   |               | 6               | <del>3-647478-6</del> |
| 19.81 [.780]   |               | 5               | <del>3-647478-5</del> |
| 15.85 [.624]   |               | 4               | <del>3-647478-4</del> |
| 11.89 [.468]   |               | 3               | <del>3-647478-3</del> |
| 7.92 [.312]    |               | 2               | <del>3-647478-2</del> |

9 SUPERSEDED  
 OBSOLETE  
 OBSOLETE  
 SUPERSEDED  
 OBSOLETE  
 OBSOLETE

THIS DRAWING IS A CONTROLLED DOCUMENT. DWN 09-NOV-2000 K. WHITAKER  
 CHK 09-NOV-2000 D. BOSSI  
 APVD -  
 PRODUCT SPEC 108-1051  
 APPLICATION SPEC 114-1020  
 MATERIAL 1 FINISH -  
 WEIGHT -  
 CUSTOMER DRAWING

**TE** TE Connectivity  
 MTA-156 CONNECTOR ASSEMBLY, 22 AWG, STANDARD

|       |           |            |               |
|-------|-----------|------------|---------------|
| SIZE  | CAGE CODE | DRAWING NO | RESTRICTED TO |
| A2    | 00779     | C=647478   | -             |
| SCALE | SHEET     | REV        |               |
| 4:1   | 1 OF 1    | F1         |               |

# Mouser Electronics

Authorized Distributor

Click to View Pricing, Inventory, Delivery & Lifecycle Information:

[TE Connectivity:](#)

[647478-5](#)