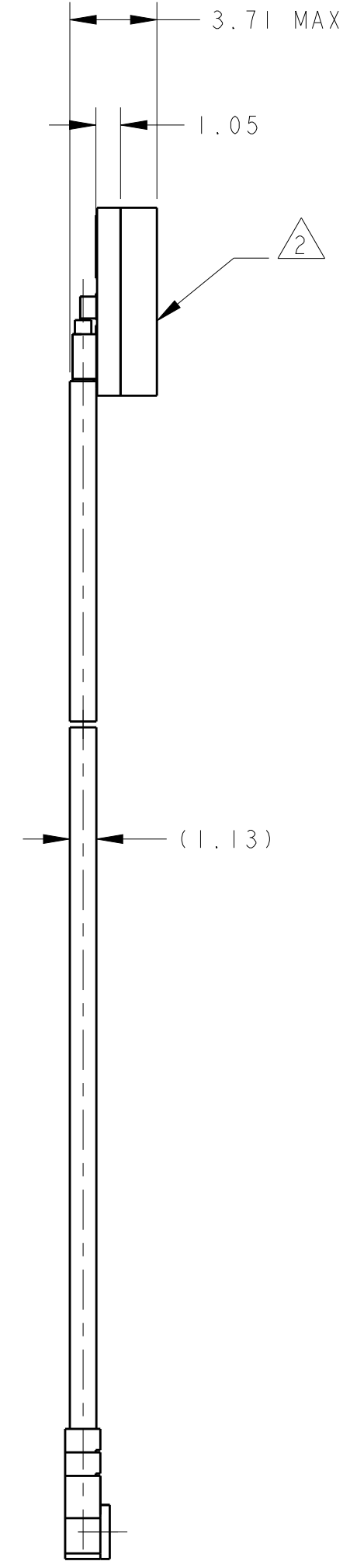
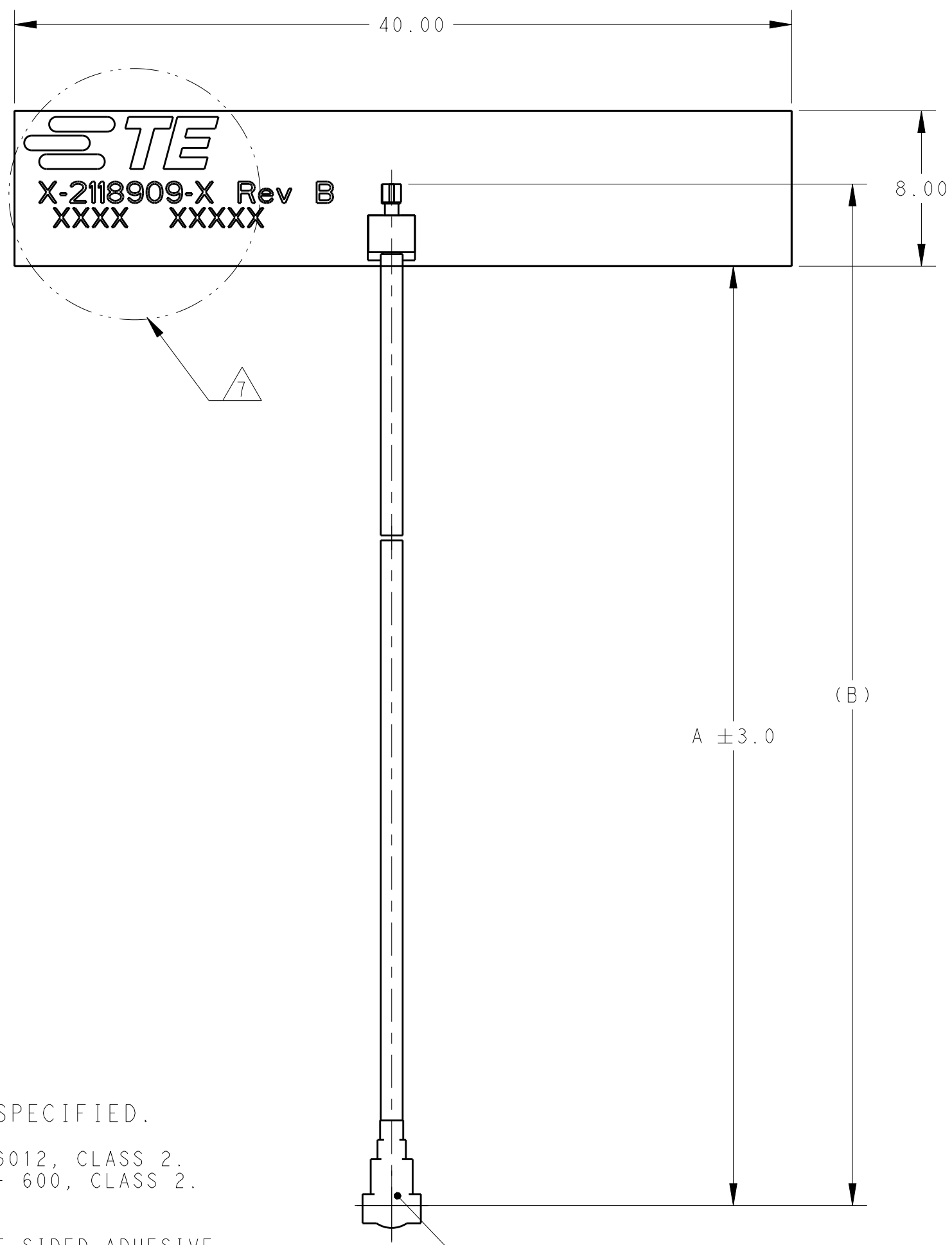


THIS DRAWING IS UNPUBLISHED. RELEASED FOR PUBLICATION 20
 © COPYRIGHT 20 BY TYCO ELECTRONICS CORPORATION ALL RIGHTS RESERVED.

LOC	DIST	REVISIONS			
P	LTR	DESCRIPTION	DATE	DWN	APVD
00	AJ	A2	REV PER ECO-20-007878	05JUN2020	SJ JH
		A3	Updated drawing	10JUN2020	SJ JH
		A4	Added cable parts.	13AUG2020	SJ JH
		B	REVISED PER ECO-20-015624	04NOV2020	SJ JH



CONNECTOR MATING FACE DOWN IN THIS VIEW "C"

NOTES: UNLESS OTHERWISE SPECIFIED.

- FABRICATE TO MEET IPC - 6012, CLASS 2. INSPECT TO MEET IPC - A - 600, CLASS 2.
- MATERIAL :
 A. FR-4 PCB + VHB DOUBLE SIDED ADHESIVE.
 B. ADHESIVE WITH LINER ON THE BACK SIDE. REMOVE LINER TO APPLY
- FINISH:
 A: SOLDERMASK BOTH SIDES: ORANGE.
- GENERAL TOLERANCE : ±0.2.
- PACKAGING: SINGULATED PARTS TO BE SECURELY BAG WRAPPED, BAGGED OR VACUUM PACKED IN BULK.
- CONSULT TE CONNECTIVITY DATA SHEET DS2118909.
- SILKSCREEN; WHITE EPOXY INK
 A. TE LOGO, TE P/N
 B. WORD REV., FOLLOWED BY THE LATEST REVISION LETTER, AS SHOWN.
 C. 4 DIGIT DATE CODE: FIRST 2 DIGITS FOR THE WEEK CODE AND THE 2ND TWO DIGITS FOR THE YEAR CODE.
 OTHERS: SPECIFIC TE SOURCE CODE NUMBER DIGITS AS REQUIRED.

MHF 4L	(204.2)	200.0	1-2118909-8
	(154.2)	150.0	1-2118909-7
	(104.2)	100.0	1-2118909-6
	(54.2)	50.0	1-2118909-5
MHF	(204.2)	200.0	1-2118909-4
	(154.2)	150.0	1-2118909-3
	(104.2)	100.0	1-2118909-2
	(54.2)	50.0	1-2118909-1
MHF 4L	(64.20)	60.0	2118909-8
	(375.00)	370.80	2118909-6
	(225.00)	220.80	2118909-5
	(120.00)	115.80	2118909-4
MHF	(273.00)	268.80	2118909-2
	(120.00)	115.80	2118909-1
"C" CONNECTOR TYPE	B	A	PART NUMBER

THIS DRAWING IS A CONTROLLED DOCUMENT.

DWN	SJ, NOH	04APR2020	 TE Connectivity
CHK	H, SHIN	04APR2020	
APVD	JH, KIM	04APR2020	
PRODUCT SPEC	-		
APPLICATION SPEC	-		NAME
WEIGHT	-		PCB Ant, MHF/MHF4L Wi-Fi 6E Triple
CUSTOMER DRAWING	SCALE	4:1	SIZE
	SHEET	1	CAGE CODE
	OF	1	DRAWING NO
	REV	B	RESTRICTED TO

Mouser Electronics

Authorized Distributor

Click to View Pricing, Inventory, Delivery & Lifecycle Information:

[TE Connectivity:](#)

[2118909-2](#)