
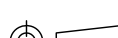


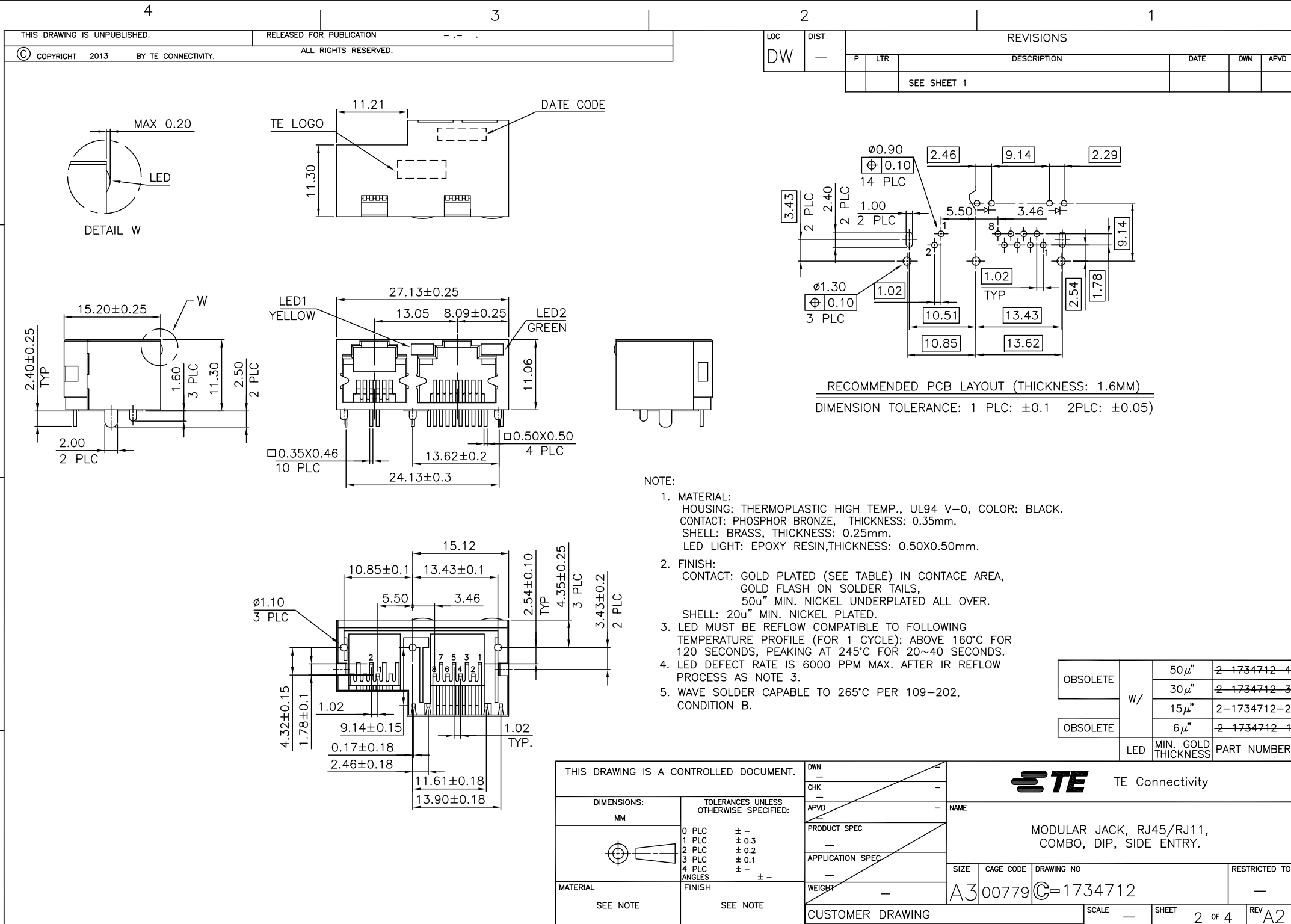
RECOMMENDED PCB LAYOUT (THICKNESS: 1.6MM)
DIMENSION TOLERANCE: 1 PLC: ± 0.1 2PLC: ± 0.05)

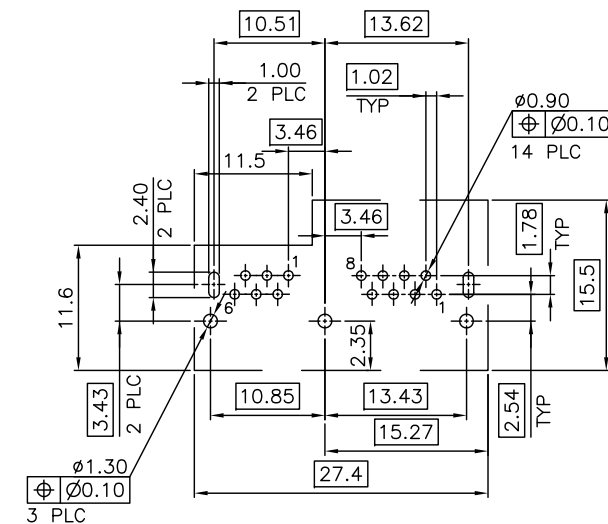
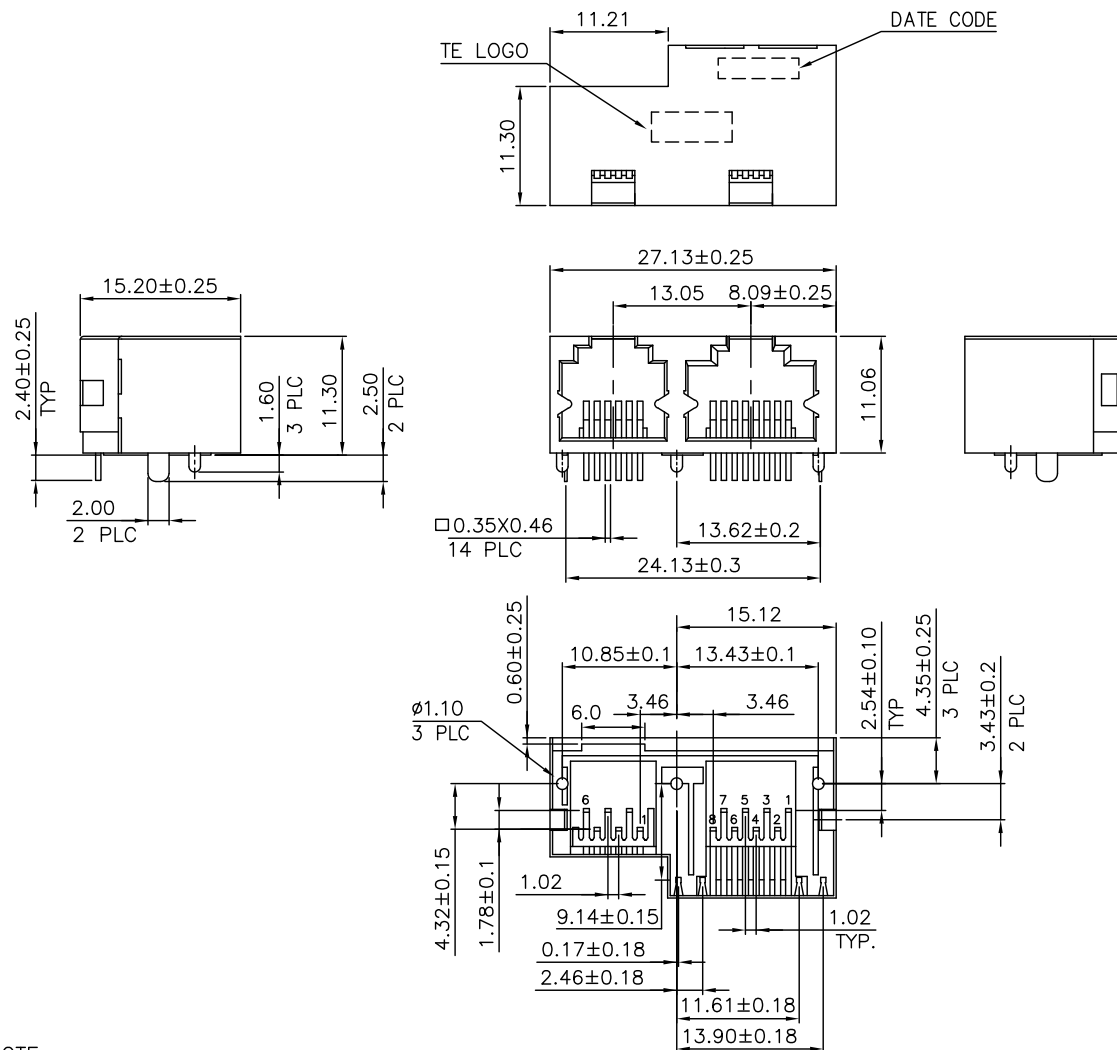
OBSOLETE	W/O	W/O	50μ"	1-1734712-4
			30μ"	1-1734712-3
			15μ"	1-1734712-2
			6μ"	1-1734712-1
	W/O	0.6mm	50μ"	1-1734712-4
			30μ"	1-1734712-3
			15μ"	1-1734712-2
			6μ"	1-1734712-1
	LED	POLARIZATION RIB THICKNESS	MIN. GOLD THICKNESS	PART NUMBER

NOTE:

1. MATERIAL:
HOUSING: THERMOPLASTIC HIGH TEMP., UL94 V-0, COLOR: BLACK.
CONTACT: PHOSPHOR BRONZE, H, THICKNESS: 0.35mm.
SHELL: BRASS, THICKNESS: 0.25mm.
2. FINISH:
CONTACT: GOLD PLATED (SEE TABLE) IN CONTACT AREA,
GOLD FLASH ON SOLDER TAILS,
50u" MIN. NICKEL UNDERPLATED ALL OVER.
SHELL: 20u" MIN. NICKEL PLATED.
3. WAVE SOLDER CAPABLE TO 265°C PER 109-202,
CONDITION B.

THIS DRAWING IS A CONTROLLED DOCUMENT.		DWN O. HU 21MAR2006		 TE Connectivity	
		CHK S. HOU 21MAR2006			
DIMENSIONS: MM		TOLERANCES UNLESS OTHERWISE SPECIFIED:		NAME	
		APVD WJ. KE 21MAR2006		MODULAR JACK, RJ45/RJ11, COMBO, DIP, SIDE ENTRY.	
		PRODUCT SPEC 108-57535			
		APPLICATION SPEC —			
		SIZE A3			
MATERIAL SEE NOTE		FINISH SEE NOTE		CAGE CODE 00779	
		WEIGHT 4.5 GRAMS		DRAWING NO C=1734712	
CUSTOMER DRAWING				RESTRICTED TO —	
				SCALE —	
				SHEET 1 OF 4	
				REV A2	







RECOMMENDED PCB LAYOUT (THICKNESS: 1.6MM)
DIMENSION TOLERANCE: 1 PLC: ±0.1 2PLC: ±0.05)

NOTE:

1. MATERIAL:
HOUSING: THERMOPLASTIC HIGH TEMP., UL94 V-0, COLOR: BLACK.
CONTACT: PHOSPHOR BRONZE, H, THICKNESS: 0.35mm.
SHELL: BRASS, THICKNESS: 0.25mm.
2. FINISH:
CONTACT: GOLD PLATED (SEE TABLE) IN CONTACT AREA,
GOLD FLASH ON SOLDER TAILS,
50u" MIN. NICKEL UNDERPLATED ALL OVER.
SHELL: 20u" MIN. NICKEL PLATED.
3. WAVE SOLDER CAPABLE TO 265°C PER 109-202,
CONDITION B.

OBSOLETE	W/O	6P6C	50μ"	3-1734712-4
			30μ"	3-1734712-3
			15μ"	3-1734712-2
			6μ"	3-1734712-1
	LED	RJ11	MIN. GOLD THICKNESS	PART NUMBER

THIS DRAWING IS A CONTROLLED DOCUMENT.		DWN —		 TE Connectivity						
		CHK —								
		APVD —								
DIMENSIONS: MM		TOLERANCES UNLESS OTHERWISE SPECIFIED:		NAME						
		0 PLC ± —		MODULAR JACK, RJ45/RJ11, COMBO, DIP, SIDE ENTRY.						
		1 PLC ± 0.3								
		2 PLC ± 0.2								
		3 PLC ± 0.1								
4 PLC ANGLES ± —		PRODUCT SPEC —								
		APPLICATION SPEC —								
MATERIAL		FINISH		SIZE	CAGE CODE	DRAWING NO	RESTRICTED TO			
SEE NOTE		SEE NOTE		WEIGHT —	A3	00779	C=1734712	—		
CUSTOMER DRAWING					SCALE	—	SHEET	3 of 4	REV	A2

THIS DRAWING IS UNPUBLISHED.

RELEASED FOR PUBLICATION

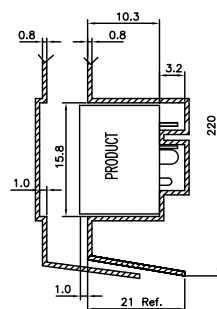
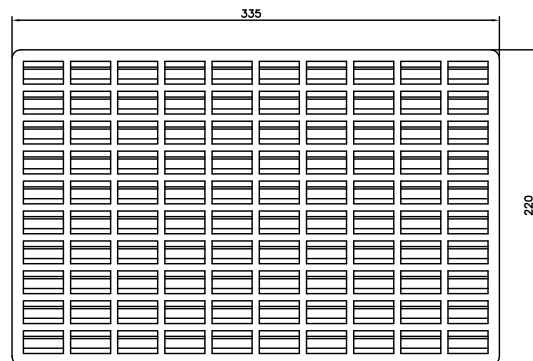
ALL RIGHTS RESERVED.

© COPYRIGHT 2013 BY TE CONNECTIVITY.

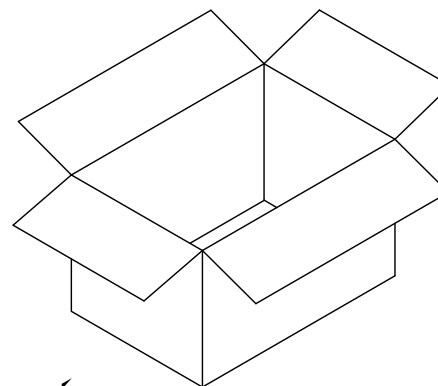
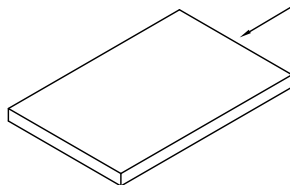
LOC
DWDIST
—

REVISIONS

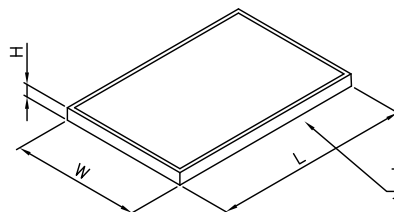
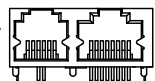
P	LTR	DESCRIPTION	DATE	DWN	APVD
		SEE SHEET 1			



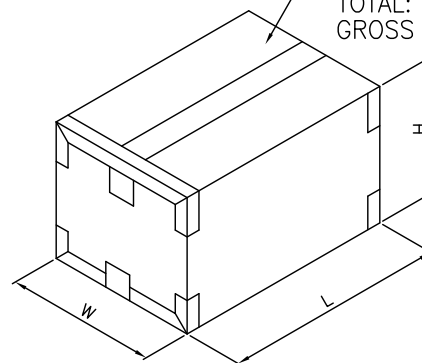
NOTE: 1. MATERIAL: PET T: 0.8mm.

TOP COVER
(ONLY FOR TOP TRAY)

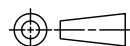
MODULAR JACK

TRAY
335mm(L)X220mm(W)X21mm(H)
100 PCS/TRAY

CARTON

345mm(L)X235mm(W)X195mm(H)
11 TRAY/CARTON
TOTAL: 1100 PCS
GROSS WEIGHT: 7Kg

THIS DRAWING IS A CONTROLLED DOCUMENT.

DIMENSIONS:
MM

MATERIAL

TOLERANCES UNLESS
OTHERWISE SPECIFIED:0 PLC ±
1 PLC ±
2 PLC ±
3 PLC ±
4 PLC ±
ANGLES ±

FINISH

DWN

CHK

APVD

PRODUCT SPEC

APPLICATION SPEC

WEIGHT

CUSTOMER DRAWING

NAME

SIZE

CAGE CODE

DRAWING NO

A3

00779

C=1734712

RESTRICTED TO

—

SCALE

—

SHEET

4 of 4

REV A2



TE Connectivity

MODULAR JACK, RJ45/RJ11,
COMBO, DIP, SIDE ENTRY.

Mouser Electronics

Authorized Distributor

Click to View Pricing, Inventory, Delivery & Lifecycle Information:

[TE Connectivity:](#)

[2-1734712-2](#)