

SAFETY ORGANIZATION(S):

THIS FILTER HAS BEEN FORMALLY RECOGNIZED, CERTIFIED OR APPROVED BY THE LISTED AGENCY. THEREFORE, ALL TEST/REQUIREMENTS SPECIFIED IN THE LATEST REVISION OF THE FOLLOWING AGENCY STANDARDS HAVE BEEN MET.

UL RECOGNIZED
CSA CERTIFIED
VDE APPROVED
SEV APPROVED

UL 1283
CSA 22.2, NO. 0.0.4, 8
VDE 565-3
SEV 1055/TP1977/5.1.1

OPERATING SPECIFICATIONS:
LINE VOLTAGE/CURRENT:

3 AMP., 120/250 VAC
3 AMP./40°C, 250 VAC
50-60Hz
40°C

LINE FREQUENCY,
MAX. CASE RISE & RATED CURRENT,
MAX. LEAKAGE CURRENT, EACH
LINE TO GROUND
OPERATING AMBIENT TEMP. RANGE,
IN AN AMBIENT, T_a , HIGHER THAN 40°C, THE MAXIMUM OPERATING
CURRENT, I_o , IS AS FOLLOWS:

$$I_o = I_r \sqrt{\frac{85 - T_a}{45}}$$

RELIABILITY SPECIFICATIONS:
STORAGE TEMPERATURE:

-40°C TO +85°C
21 DAYS @ 40°C 95% RH
6 TIMES RATED CURRENT FOR 8 SECONDS

TEST SPECIFICATIONS:

INDUCTANCE,
CAPACITANCE, (MEASURED @ 1 KHz, 0.25 VAC MAX., 25°C ±1°C)
LINE TO GROUND,
LINE TO LINE,
DISCHARGE RESISTOR,
LINE/GROUND AND LINE/LINE
INSULATION RESISTANCE
(W/O DISCHARGE RESISTOR)

RECOMMENDED RECEIVING INSPECTION HIPOT:

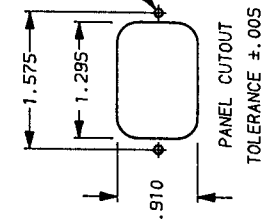
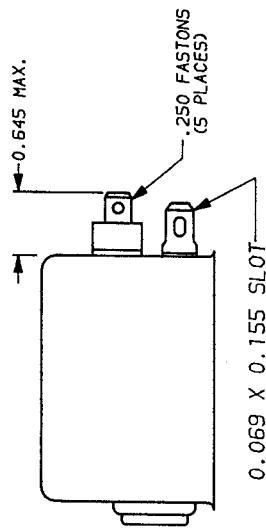
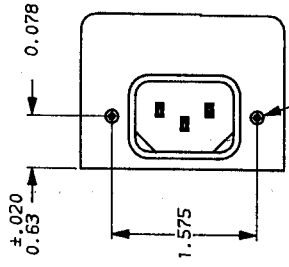
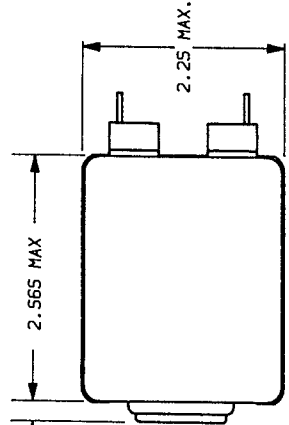
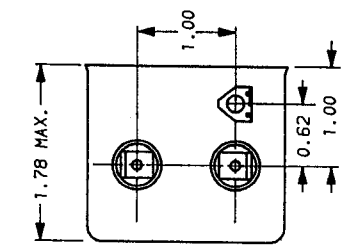
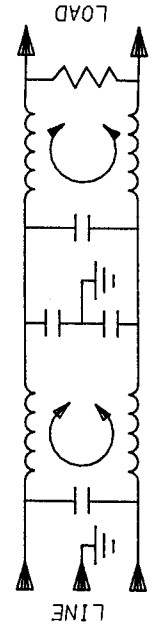
LINES TO GROUND,
LINE TO LINE,
2250 VDC FOR 1 MINUTE
1450 VDC FOR 1 MINUTE

FILTER APPROVAL:

THE BEST WAY TO SELECT AND QUALIFY A FILTER IS FOR YOUR ENGINEERING TO TEST THE UNIT IN YOUR EQUIPMENT.

50Ω - 50Ω (MINIMUM) INSERTION LOSS												
FREQUENCY MHz	.01	.02	.04	.06	.15	.5	1	2	5	10	20	
COMMON dB	12	2	2	19	58	65	65	65	65	60	38	
DIFF. dB	1	2	3	4	36	55	55	54	54	53	51	

This document is proprietary to CORCOM INC. and is not to be reproduced nor used for manufacturing purposes except on CORCOM's order or prior written consent.



POWER LINE FILTER

SCALE	DATE	DRG. NO.	REV.
NTS	9-12-89	3EP7 & 3EP7M	9
BY	TDL	CW	

Mouser Electronics

Authorized Distributor

Click to View Pricing, Inventory, Delivery & Lifecycle Information:

[TE Connectivity:](#)

[3EP7](#)