

SAFETY ORGANIZATION(S):

THIS FILTER HAS BEEN FORMALLY RECOGNIZED, CERTIFIED OR APPROVED BY THE LISTED AGENCY. THEREFORE, ALL TEST/REQUIREMENTS SPECIFIED IN THE LATEST REVISION OF THE FOLLOWING AGENCY STANDARDS HAVE BEEN MET:

UL RECOGNIZED UL 1283
 CSA CERTIFIED CSA 22.2, NO.0,0.4,8
 VDE APPROVED VDE 565-3
 SEV APPROVED SEV 1055/TP1977/5.1.1

RELIABILITY SPECIFICATIONS:

STORAGE TEMPERATURE: -40°C TO +85°C
 HUMIDITY: 21 DAYS @ 40°C 95% RH
 CURRENT OVERLOAD TEST: 6 TIMES RATED CURRENT FOR 8 SECONDS

TEST SPECIFICATIONS:

INDUCTANCE: 14.26 mH NOMINAL
 CAPACITANCE: (MEASURED @ 1 KHz, 0.25VAC MAX., 25°C±1°C)
 LINE TO GROUND: .0056µF ±20%
 LINE TO LINE: .811µF ±20%
 DISCHARGE RESISTOR: 330KΩ

LINE/GROUND AND LINE/LINE INSULATION RESISTANCE:
 6000MΩ (MIN) AT 100VDC, 20°C AND 50% RH.

RECOMMENDED RECEIVING INSPECTION HIPOT:

LINES TO GROUND: 2250 VDC FOR 1 MINUTE
 LINE TO LINE: 1450 VDC FOR 1 MINUTE

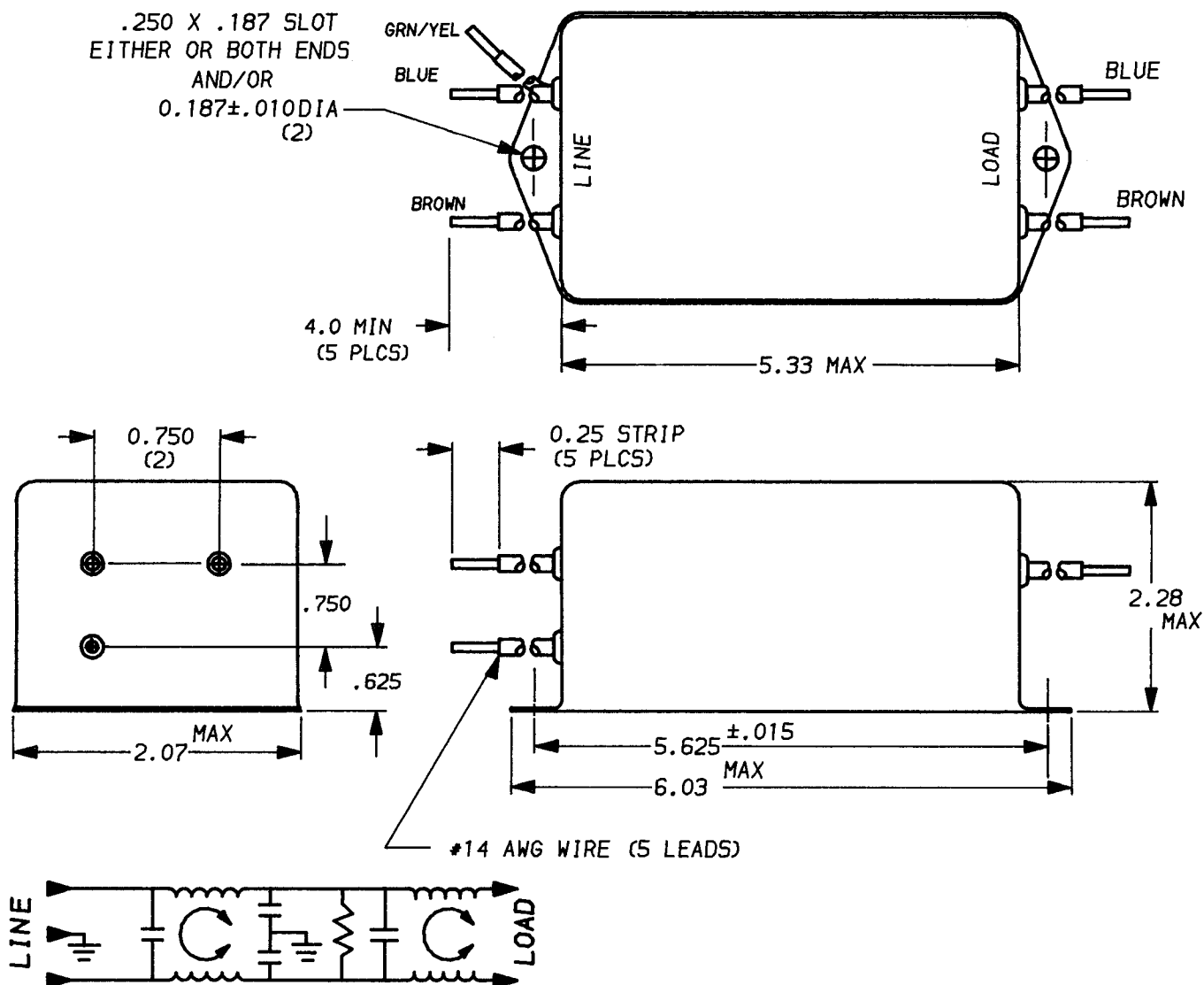
FILTER APPROVAL:

THE BEST WAY TO SELECT AND QUALIFY A FILTER IS FOR YOUR ENGINEERING TO TEST THE UNIT IN YOUR EQUIPMENT.

OPERATING SPECIFICATIONS:

LINE VOLTAGE/CURRENT: 10 AMP, 120/250 VAC
 8 AMP./40°C, 250 VAC
 LINE FREQUENCY: 50-60Hz
 MAX. CASE RISE @ RATED CURRENT: 40°C
 MAX. LEAKAGE CURRENT, EACH: .25 mA AT 120V 60Hz
 LINE TO GROUND: .4 mA at 250V 50Hz
 OPERATING AMBIENT TEMP. RANGE: -10°C TO +40°C @ RATED CURRENT, I_r
 IN AN AMBIENT, T_a, HIGHER THAN 40°C, THE MAXIMUM OPERATING CURRENT, I_o, IS AS FOLLOWS:

$$I_o = I_r \sqrt{\frac{85 - T_a}{45}}$$



50n - 50n (MINIMUM) INSERTION LOSS

FREQUENCY MHz	.01	.04	.05	.06	.15	.5	5.0	10	20	30	/	/
COMMON dB	1	1	10	18	58	65	65	60	38	25	/	/
DIFF. dB	1	2	3	3	30	65	65	65	35	35	/	/

UNLESS OTHERWISE SPECIFIED, TOLERANCE TO BE ±.025
 MATERIAL & FINISH: AS SUPPLIED
 This document is proprietary to CORCOM INC. and is not to be reproduced nor used for manufacturing purposes except on CORCOM'S prior written consent.

corcom
 LIBERTYVILLE, IL 60048
POWER LINE FILTER
 DATE: 12-13-94 CATALOG NO. 10EP3.06
 APPROV. *[Signature]* CAD NO. 10EP3.06

Mouser Electronics

Authorized Distributor

Click to View Pricing, Inventory, Delivery & Lifecycle Information:

[TE Connectivity:](#)

[10EP3](#)