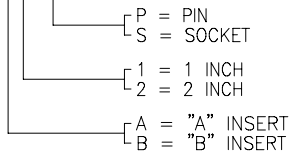


NOTES:

1. PART NUMBER VARIABLE:

MTC100-JXX-X11



2. MATERIAL:

- A) PIN/SOCKET INSERT HIGH GRADE POLYARYLENE THERMOPLASTIC.
- B) PIN CONTACT COPPER ALLOY PER QQ-B-613 OR QQ-C-502.
- C) SOCKET CONTACT COPPER ALLOY PER QQ-B-750.
- D) INTERFACIAL SEAL SILICONE ELASTOMER PER ZZ-R-765.

3. FINISH:

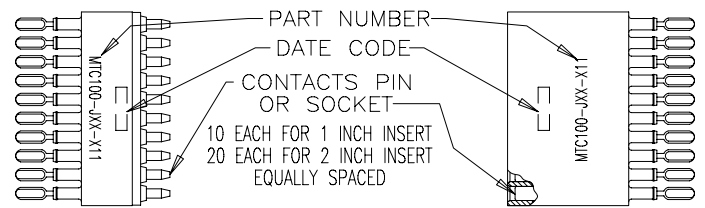
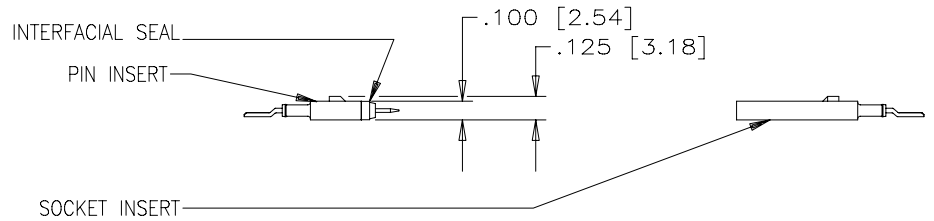
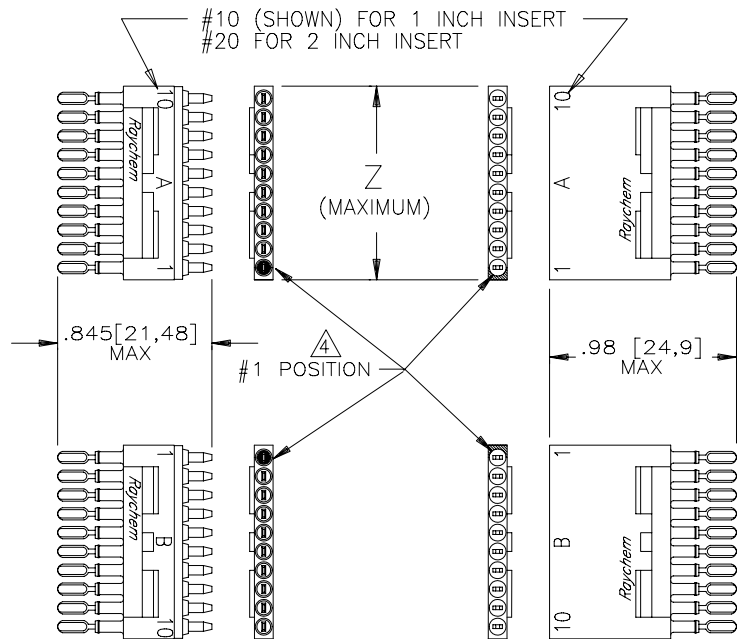
- A) PIN/SOCKET INSERT AS MOLDED.
- B) PIN/SOCKET CONTACT GOLD PLATE PER MIL-G-45204, CLASS 1.
- C) CONTACT TAIL SOLDER COATED PER QQ-S-571 (Sn63),

If this document is printed it becomes uncontrolled. Check for the latest revision.

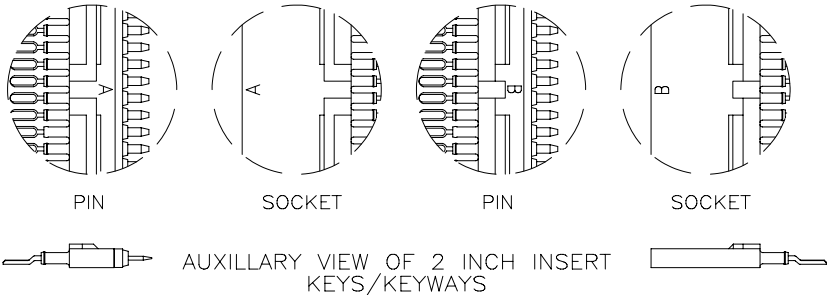
4. NUMBER ONE POSITION IS MARKED AS SHOWN IN CONTRASTING COLOR ON INTERFACE.

5. THIS INSERT MEETS THE REQUIREMENTS OF RAYCHEM SPECIFICATION C-6111.

REVISIONS			
LTR	DESCRIPTION	DATE	APPROVED
N/C	INITIAL RELEASE PER ECN T-		



SIZE		WEIGHT MAXIMUM		DIM. "Z"
		LBS.	GRAMS	
1 INCH INSERT	PIN	.0038	1.724	1.05 [26,7]
	SOC.	.0044	1.996	
2 INCH INSERT	PIN	.0074	3.356	2.05 [52,1]
	SOC.	.0089	4.037	



SPECIFICATION CONTROL DRAWING © Raychem Corporation 1990

UNLESS OTHERWISE SPECIFIED DIMENSIONS ARE IN INCHES. METRIC DIMENSIONS ARE IN BRACKETS.	DRAWN	CERDAN	900110	Raychem			
	CHECKED			RAYCHEM CORPORATION 300 CONSTITUTION DRIVE MENLO PARK, CALIFORNIA 94025			
	APPROVED	J.BLAIR	88APR18	TITLE INSERT 20-26 AWG ROUND WIRE 125°C OPERATING TEMPERATURE MTC100 SERIES			
	APPROVED	J.CAMERON	88APR21	SIZE	CODE IDENT. NO.	DWG. NO.	REV
DECIMALS .XXX ± .005 .XX ±	CAD NAME		005250-1	C	06090	MTC100-JXX-X11	N/C
ANGLES .X ±	THIRD ANGLE PROJECTION			DO NOT SCALE THIS DRAWING			SHEET 1 OF 1
WEIGHT: MAXIMUM SEE TABULATION							

Mouser Electronics

Authorized Distributor

Click to View Pricing, Inventory, Delivery & Lifecycle Information:

[TE Connectivity:](#)

[MTC100-JB1-P11](#)