

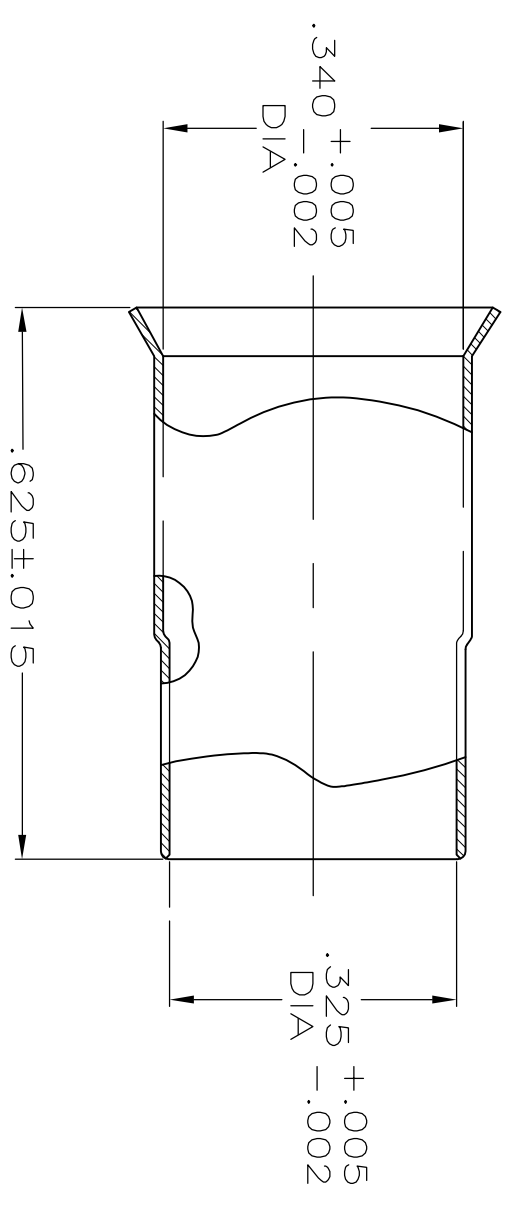
THIS DRAWING IS UNPUBLISHED.
 RELEASED FOR PUBLICATION
 ALL RIGHTS RESERVED.
 COPYRIGHT - TE Connectivity

REVISIONS					
P	LTR	DESCRIPTION	DATE	DMN	APVD
G1		REVISED PER ECR-17-009545	04AUG2017	AS	RS

1 COPPER ALLOY.

2 TIN-LEAD PLATE PER ASTM-B-545, 2.54 μm [.000100]
 MIN THICKNESS, WITH SUPPLEMENTAL ANTI FRETTING
 LUBRICANT.

3 TIN PLATE PER ASTM-B-545, 2.54 μm [.000100]
 MIN THICKNESS, WITH SUPPLEMENTAL ANTI FRETTING
 LUBRICANT.



THIS DRAWING IS A CONTROLLED DOCUMENT.

DIMENSIONS: INCHES	TOLERANCES UNLESS OTHERWISE SPECIFIED:	DMN M. SNEED 24SEP82	NAME STE TE Connectivity
0 PLC ± -	1 PLC ± -	CHK D. SMITH 12OCT82	APVD M. SNEED 12OCT82
1 PLC ± -	2 PLC ± -	PRODUCT SPEC	APPLICATION SPEC
2 PLC ± -	3 PLC ± -	APPLICATOR	SCALE 4:1
3 PLC ± -	4 ANGLES ± -	WEIGHT 0.000000	SHEET 1 of 1
MATERIAL	FINISH	CUSTOMER DRAWING	RESTRICTED TO -

SUPERCEDED BY	FINISH	PART NUMBER
9-331256-0	3	9-331256-1
	3	9-331256-0
	-	1-331256-4
	1	1-331256-0
OBSOLETE	2	331256

Mouser Electronics

Authorized Distributor

Click to View Pricing, Inventory, Delivery & Lifecycle Information:

[TE Connectivity:](#)

[9-331256-0](#)