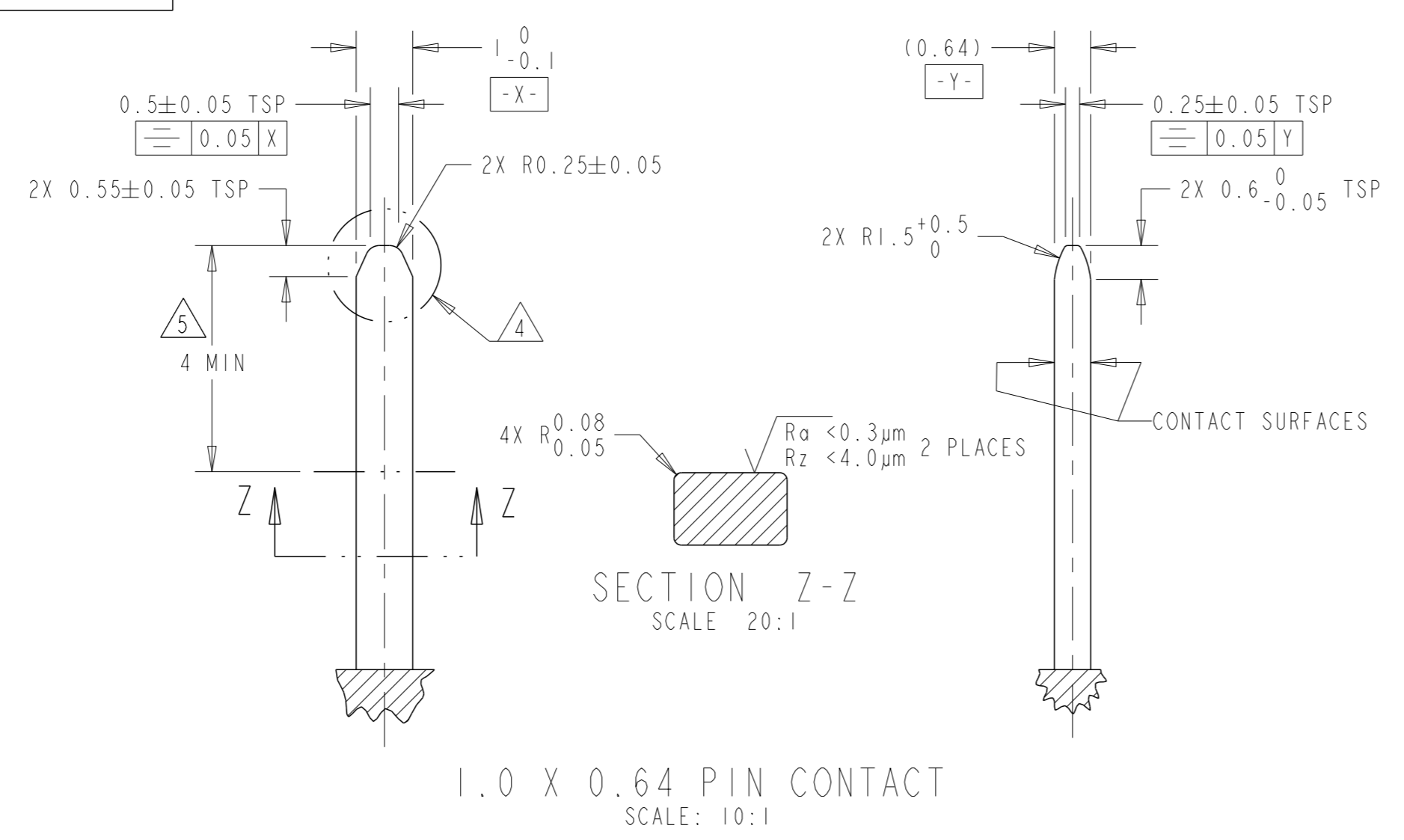
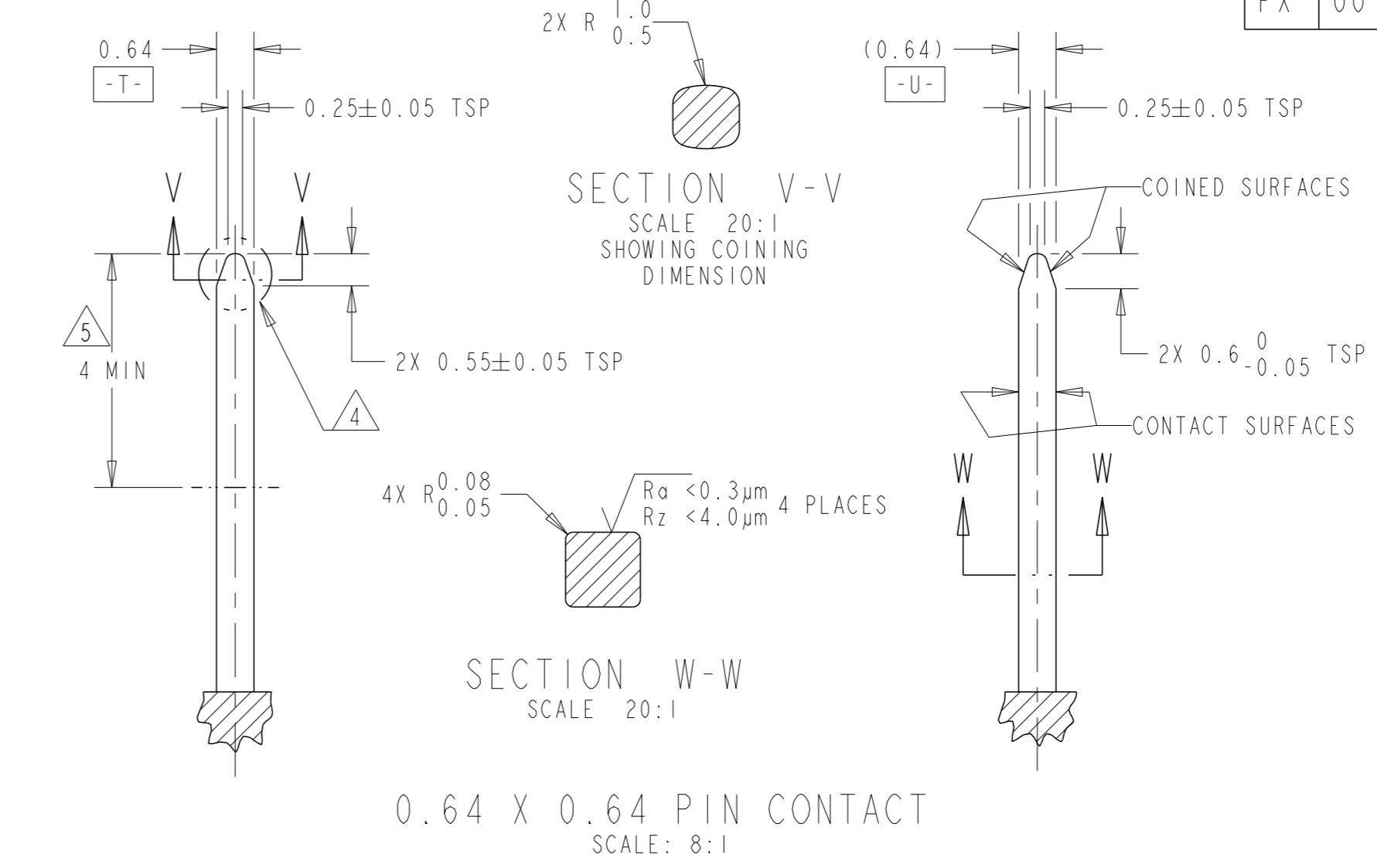


NOTE(S):

- MATERIAL: Cu ALLOY WITH TENSILE STRENGTH > 600 N/mm² ELECTRICAL CONDUCTANCE > 30 Sm/mm² (>50% IACS)
- BASE PLATING: 2-3.5µm Ni ALL OVER TIN PLATING: 2.5-4µm Sn GOLD PLATING: >0.8µm Au
- CONTACT MUST BE FREE OF BURRS AND SHARP EDGES.
- ALL EDGES RADIUSUED WITH R0.1-R0.2 IN THIS AREA.
- TIN AND GOLD PLATING AREA.
- PIN ROTATION ±5° MAXIMUM.

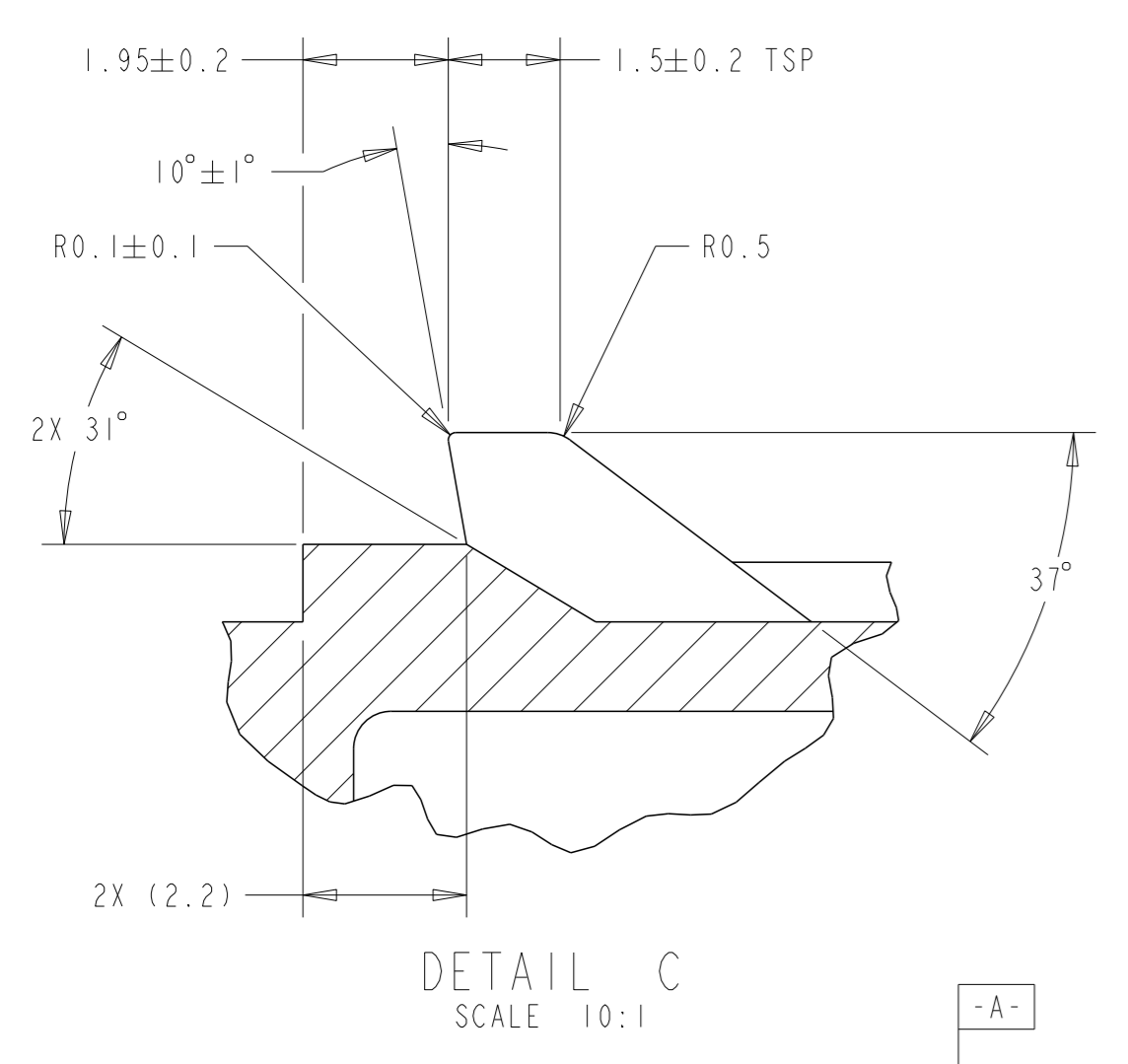


1.0 X 0.64 PIN CONTACT
SCALE: 10:1

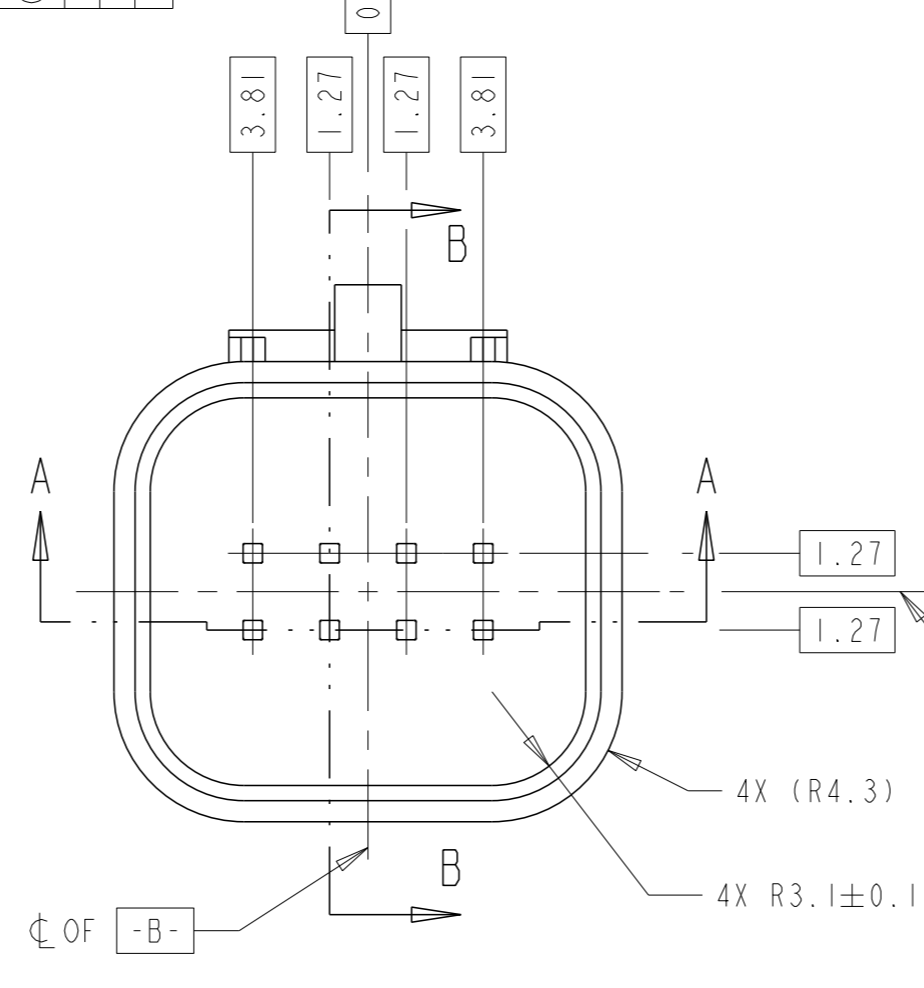
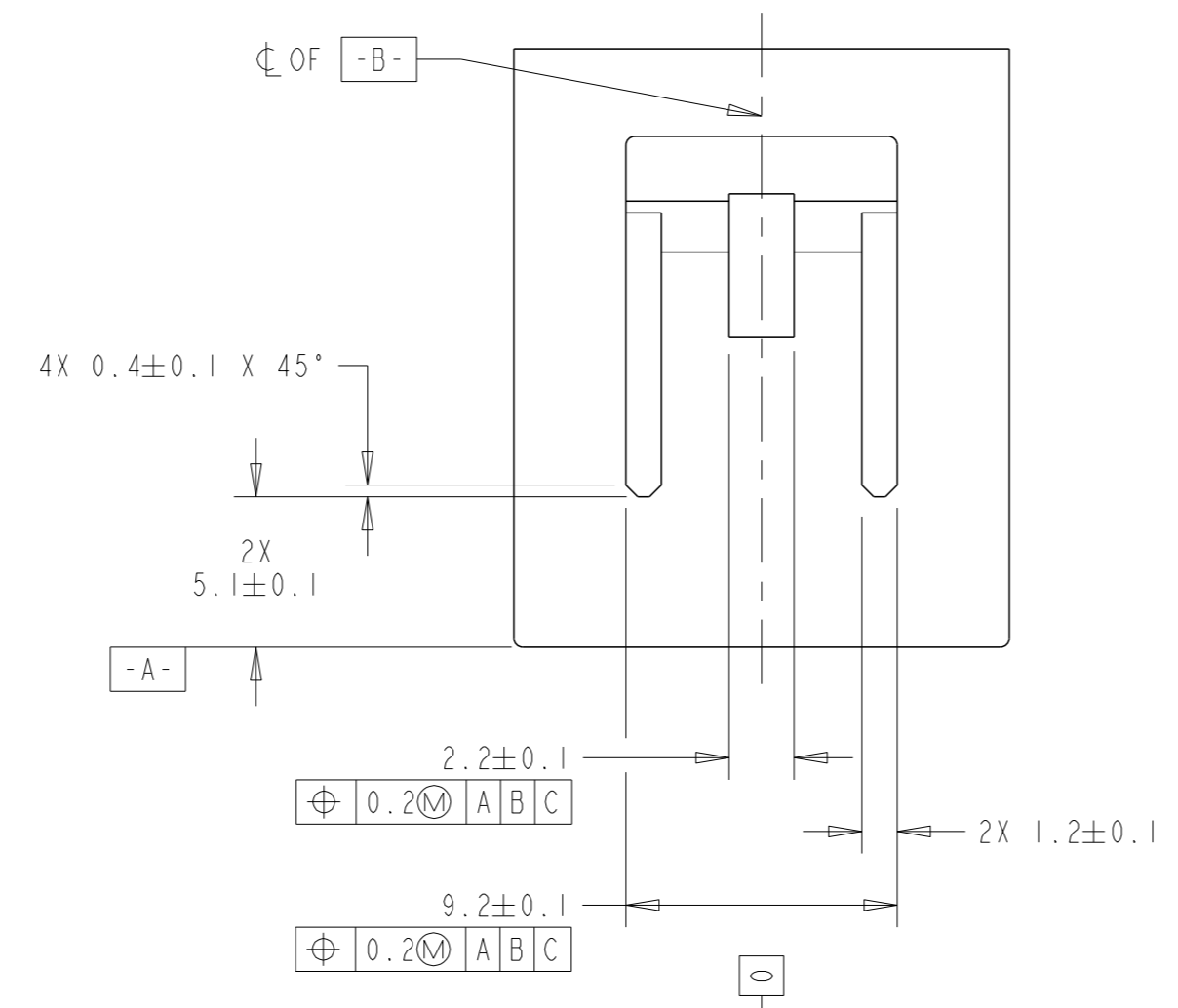


0.64 X 0.64 PIN CONTACT
SCALE: 8:1

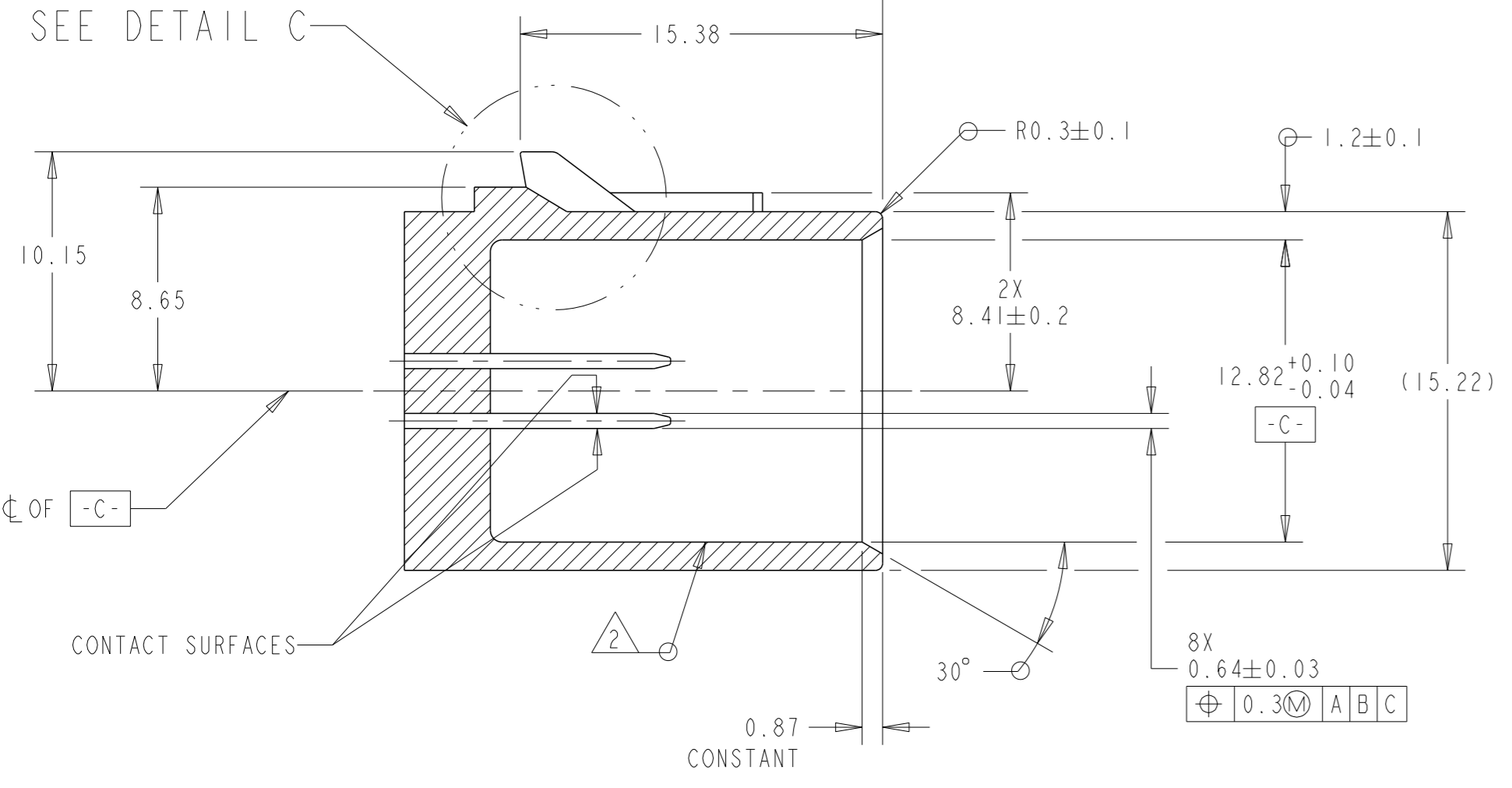
REVISONS		DATE	OWN	APVD
P	LY#	DESCRIPTION		
A		INITIAL RELEASE	06DEC2012	AW CM



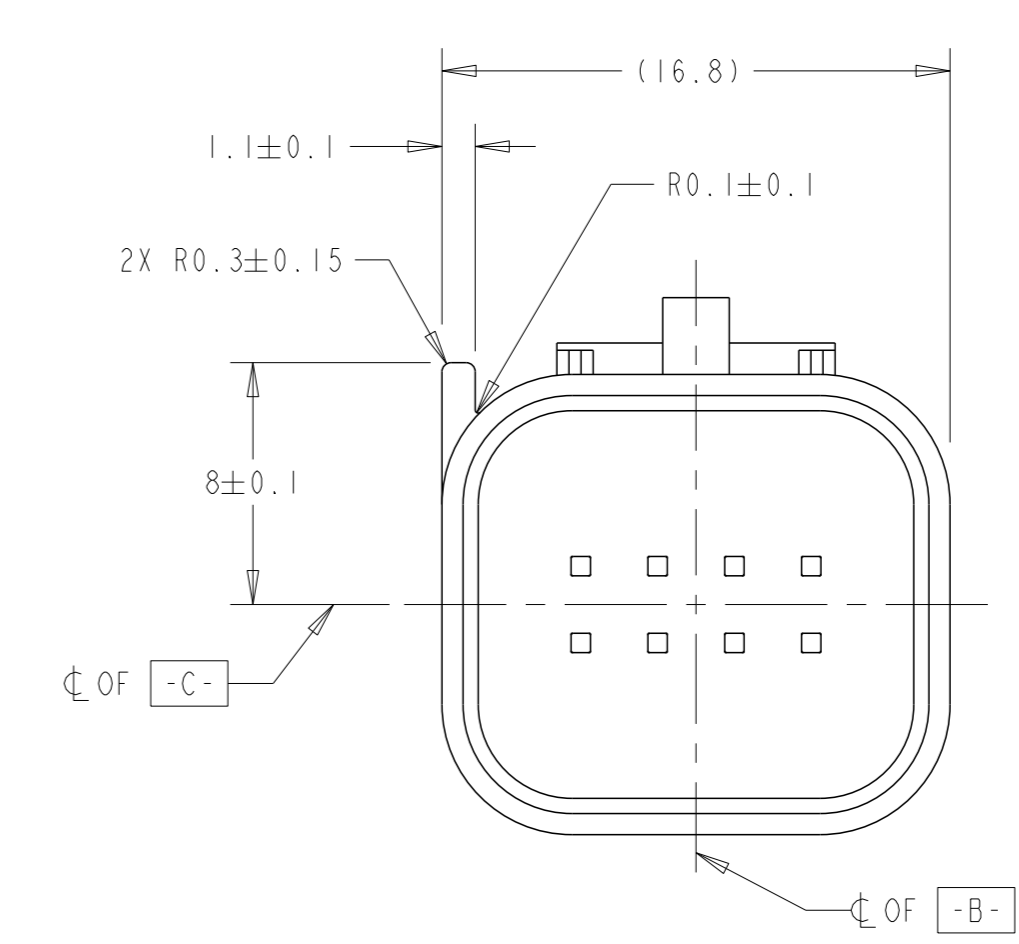
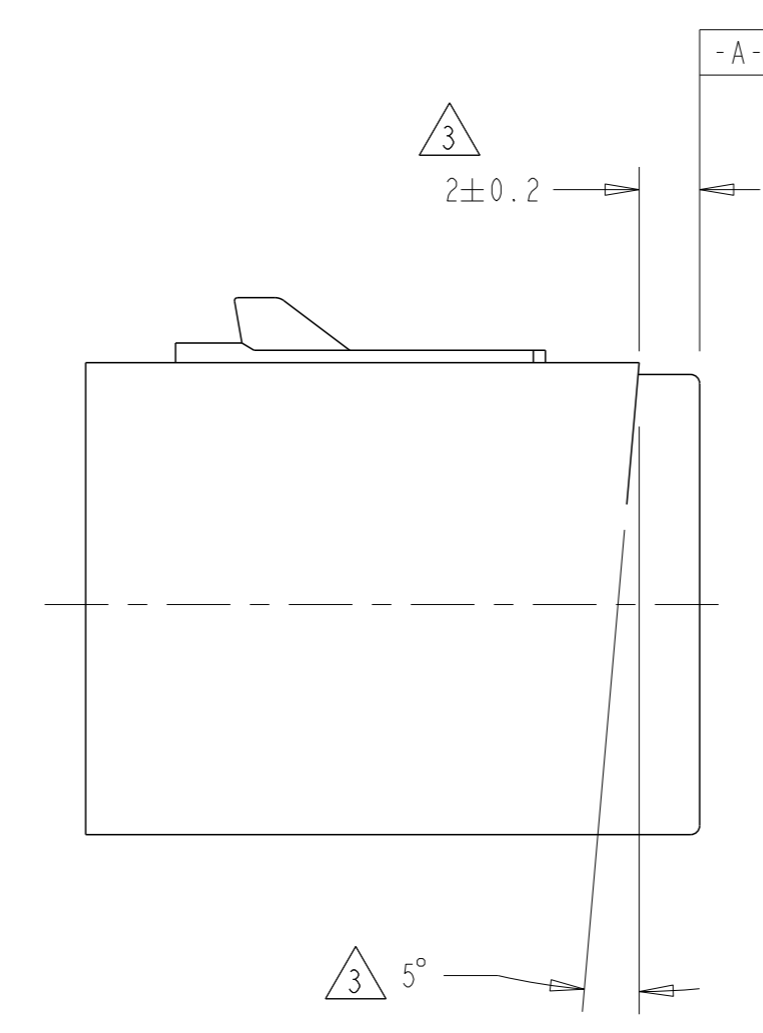
DETAIL C
SCALE: 10:1



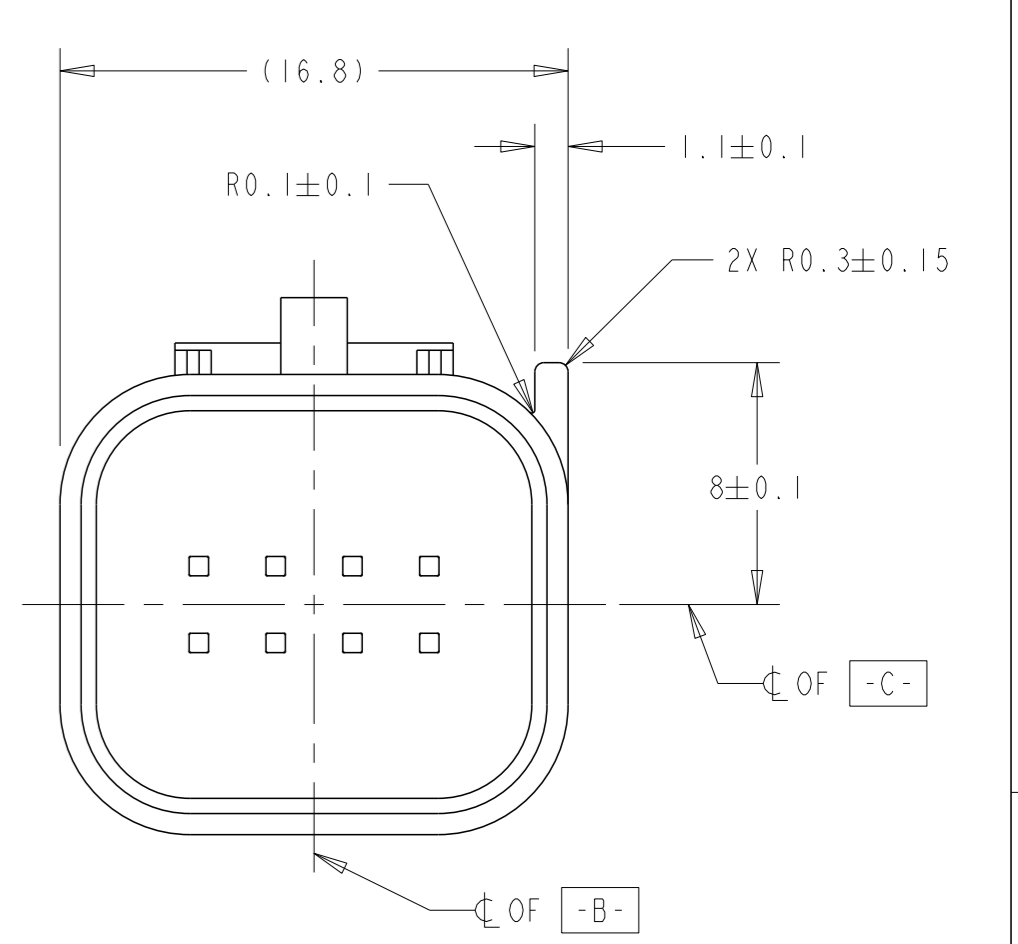
SECTION B-B



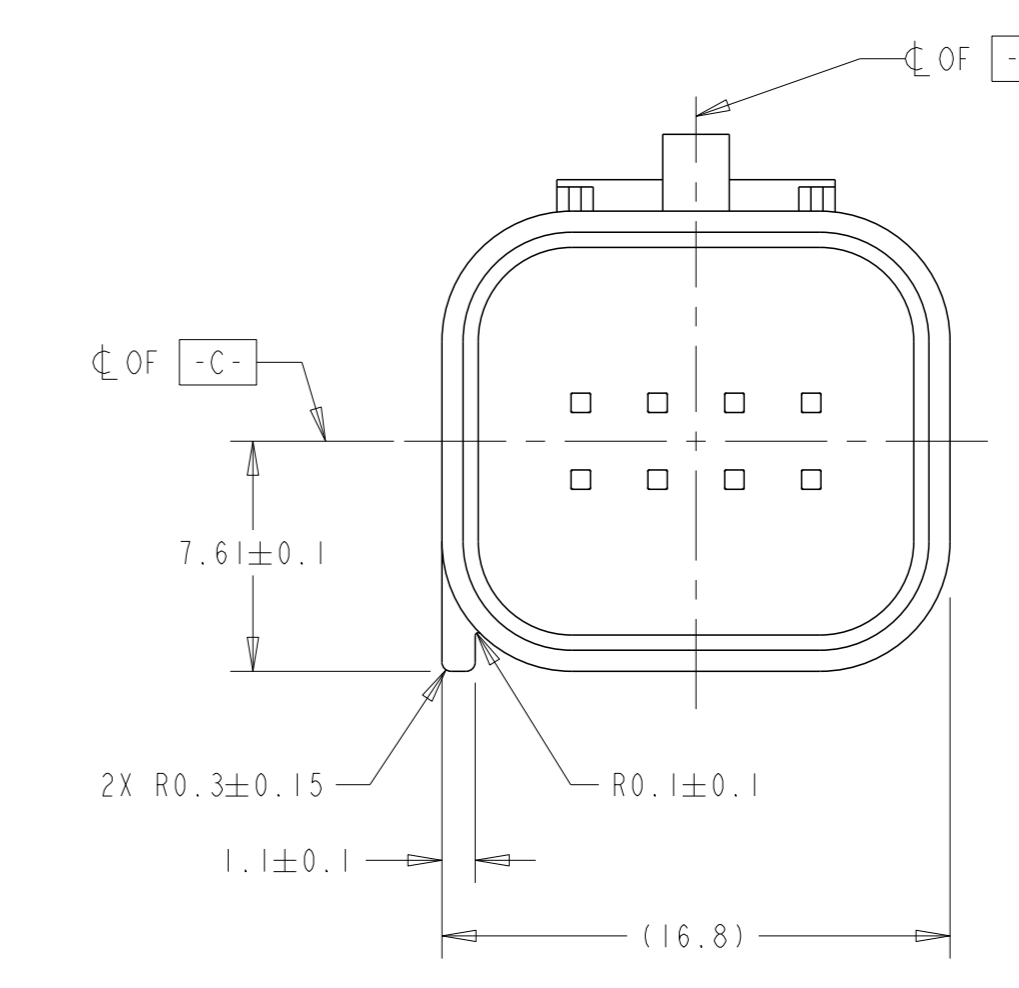
SEE DETAIL C



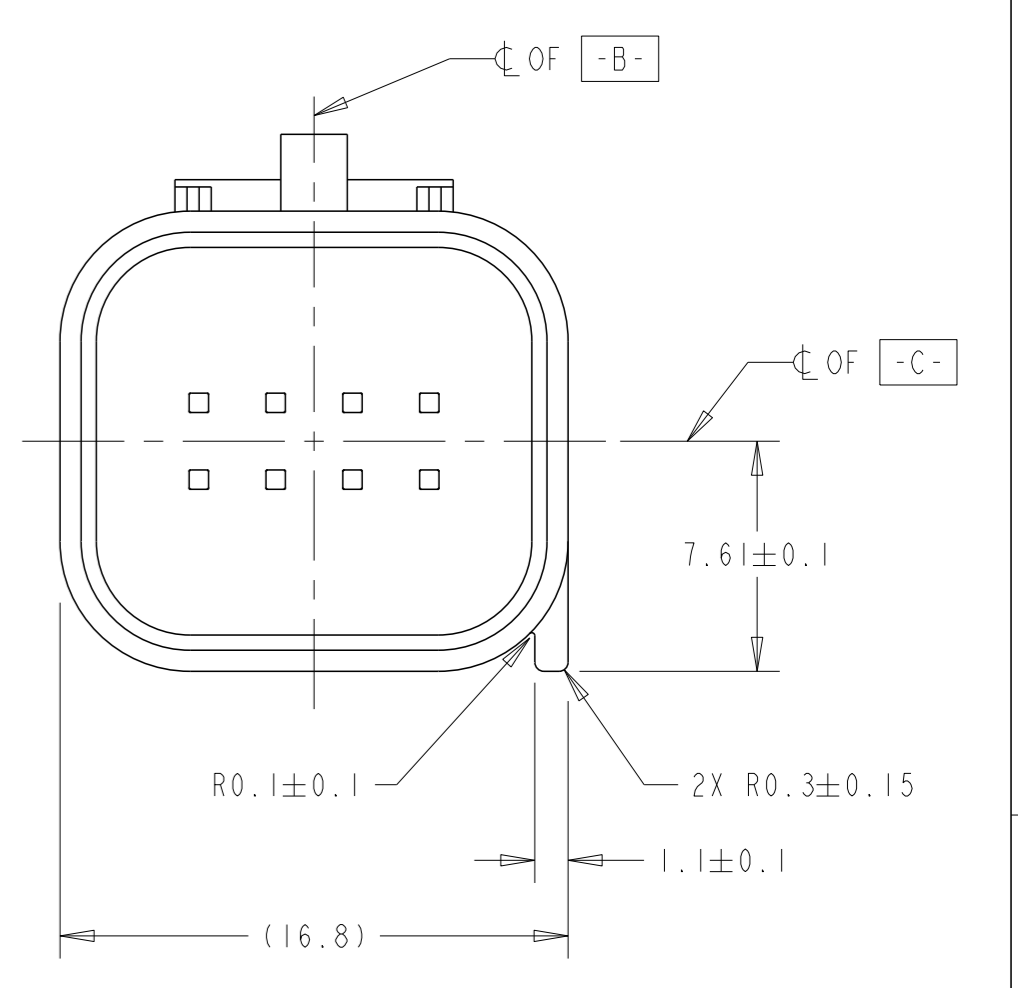
KEYING OPTION "A"



KEYING OPTION "B"



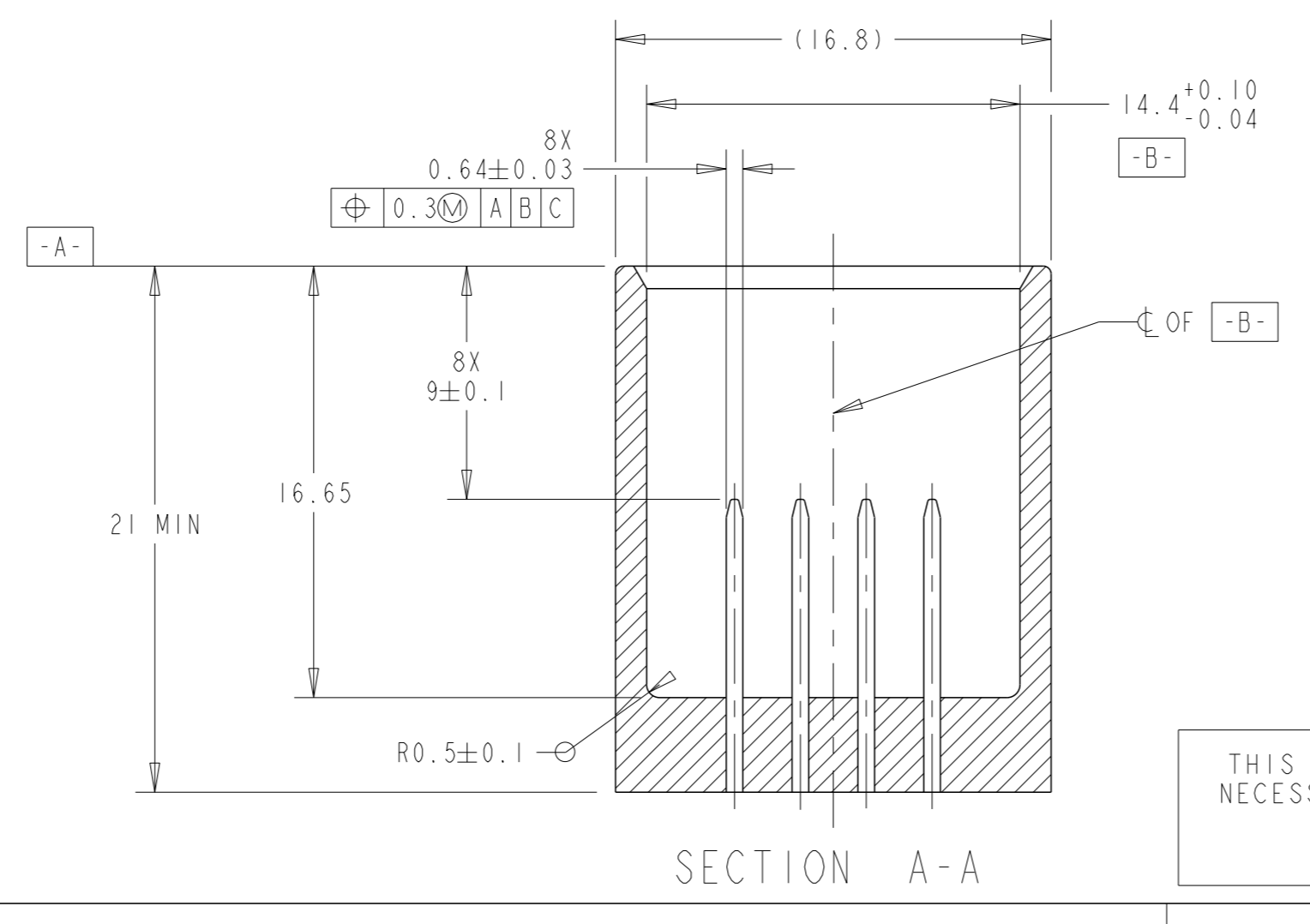
KEYING OPTION "C"



KEYING OPTION "D"

NOTE(S):

- DRAFT WITHIN TOLERANCE.
- SEALING SURFACE, NO WITNESS LINES OR DAMAGE PERMITTED.
- THIS DIMENSION APPLIES TO ALL KEYING OPTIONS.



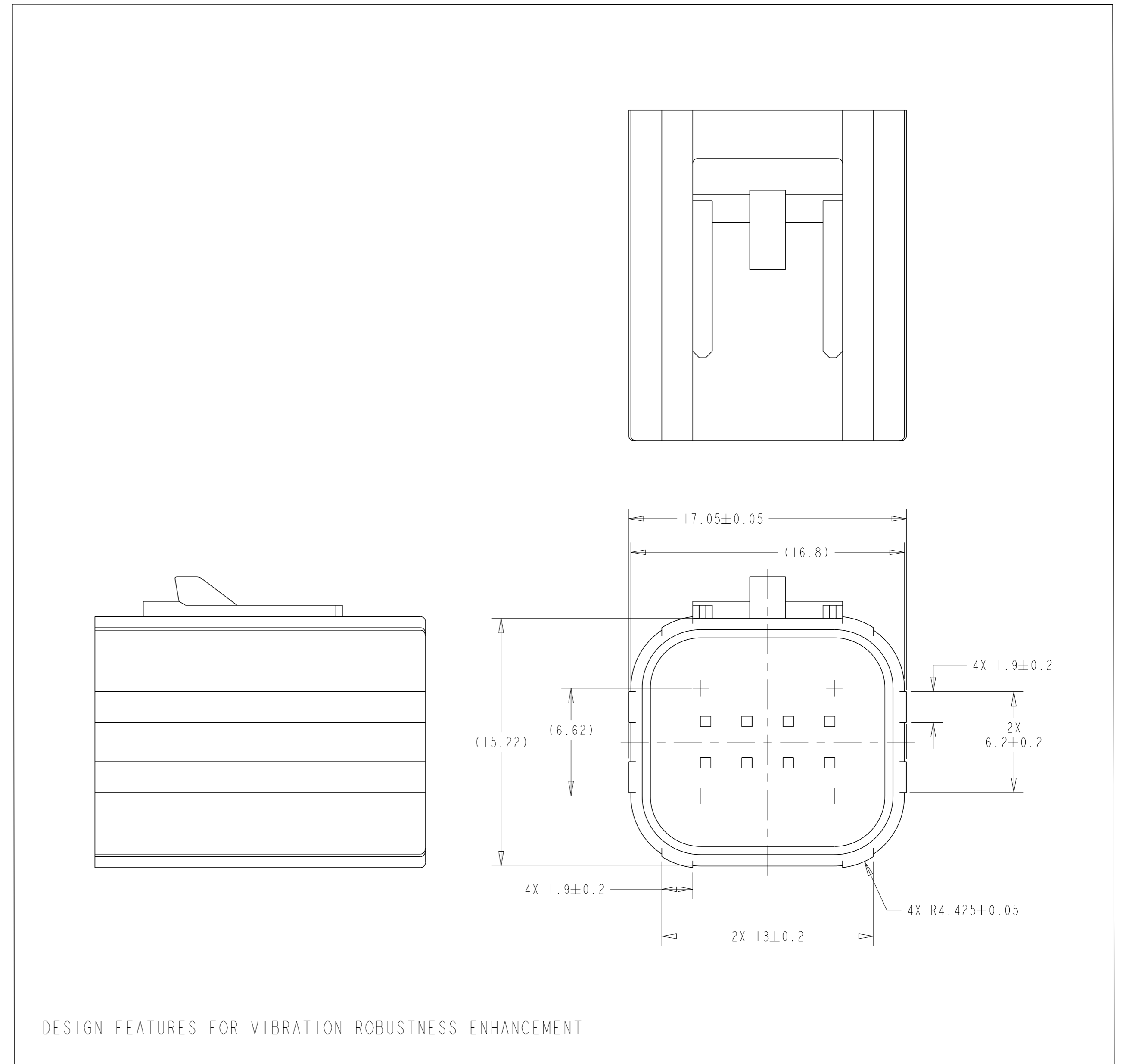
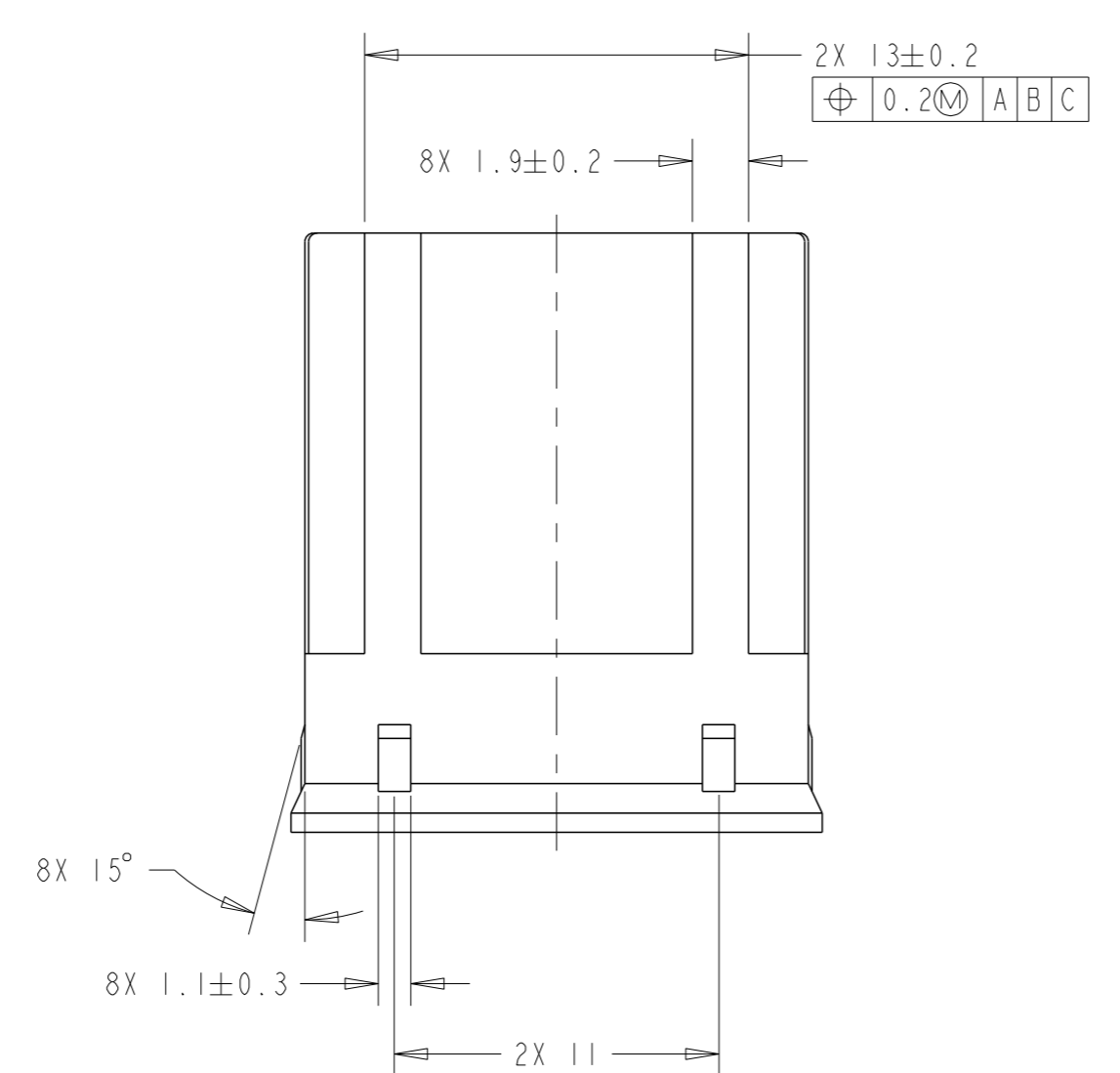
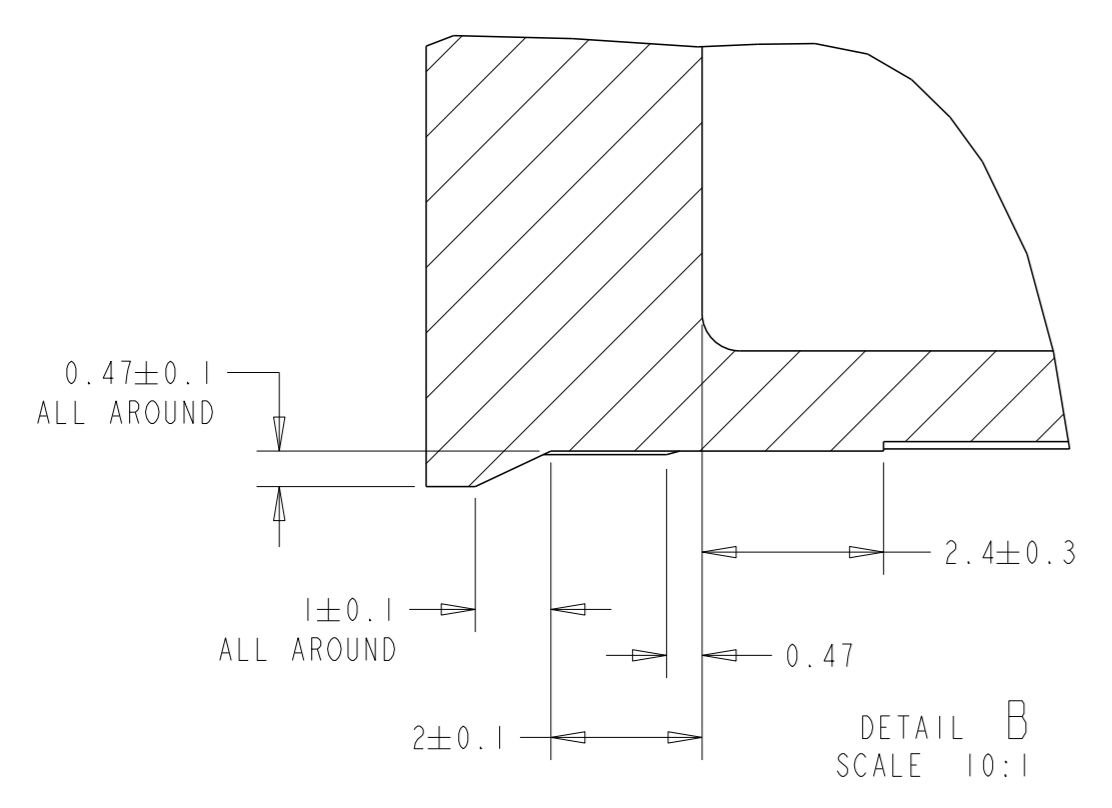
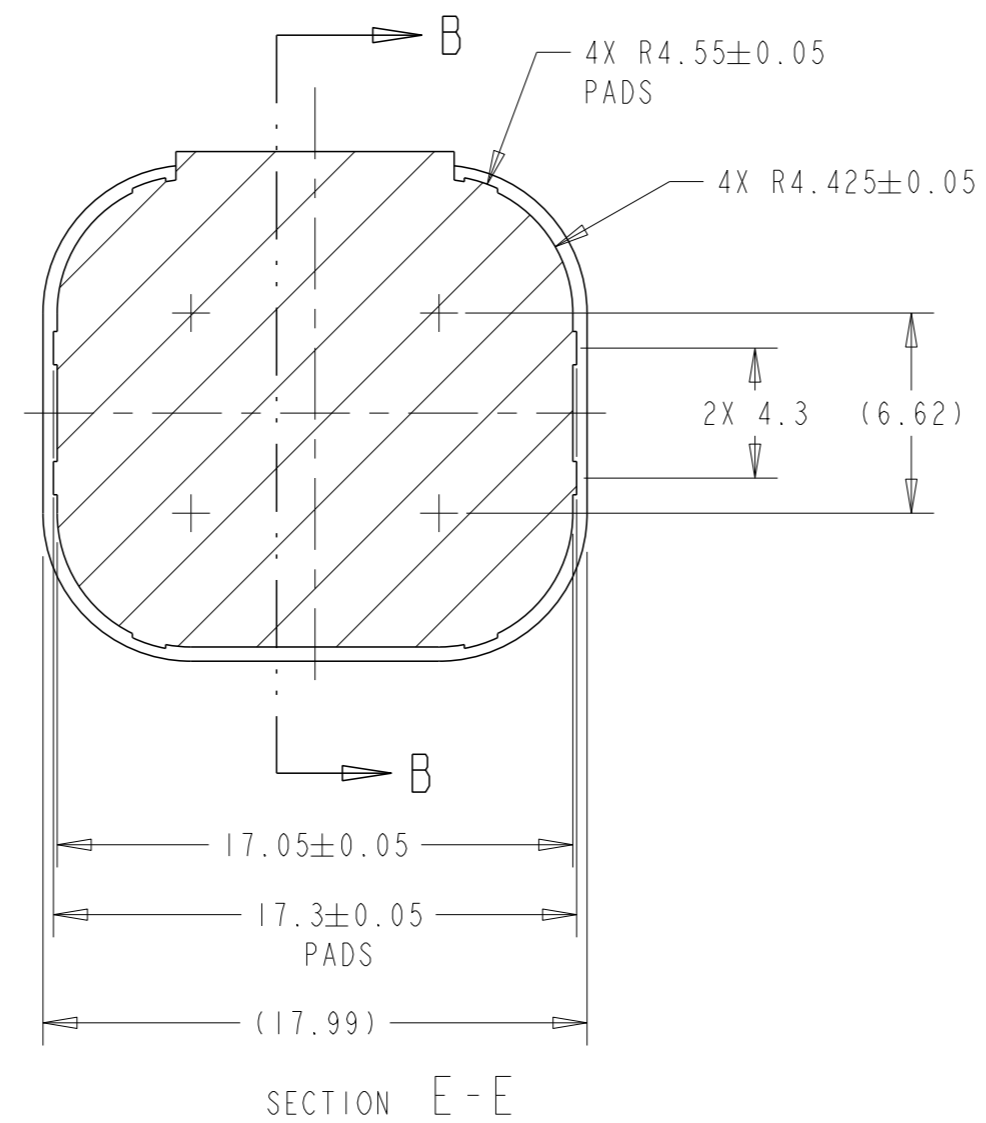
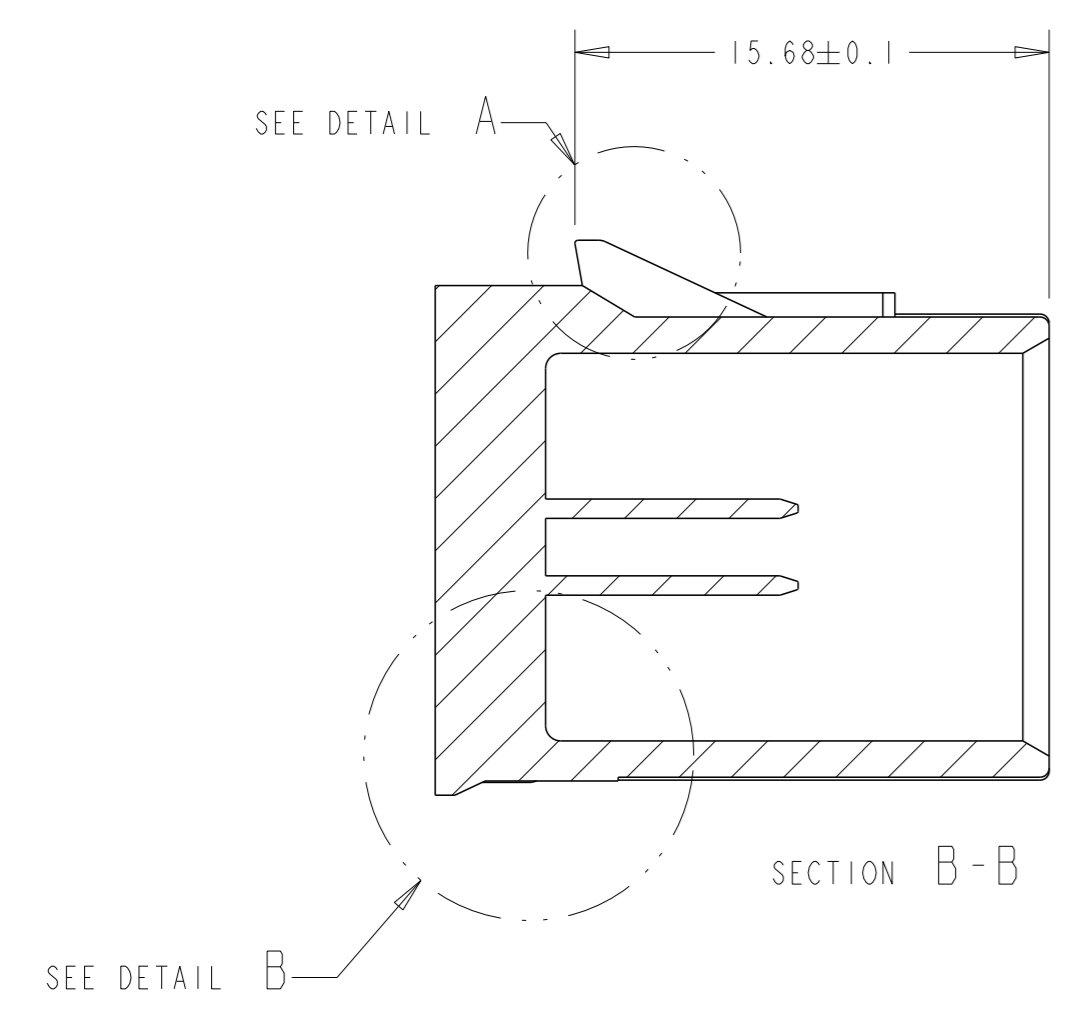
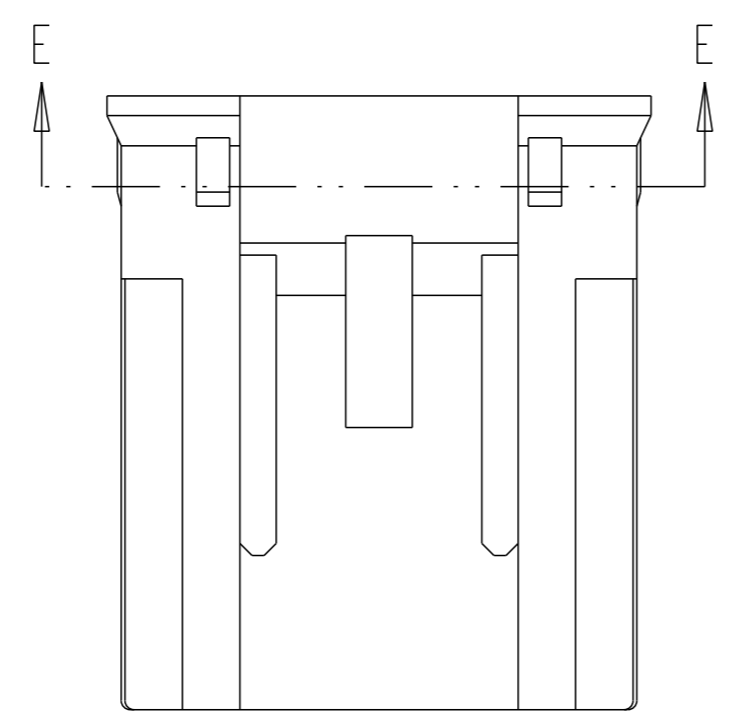
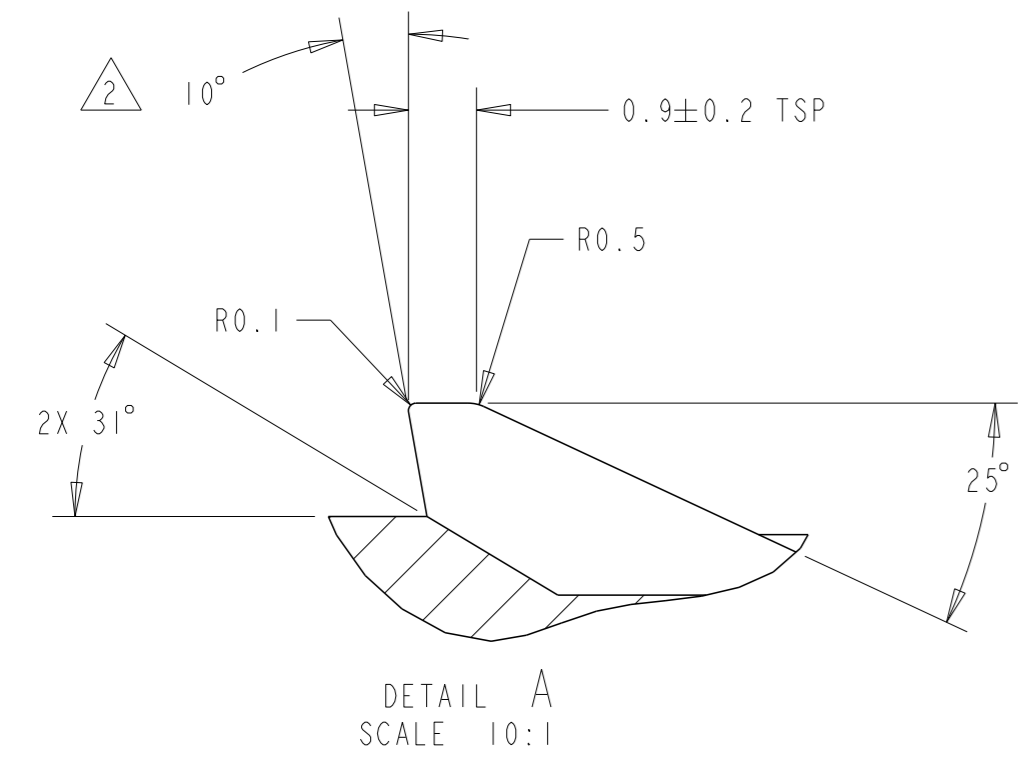
SECTION A-A

THIS DRAWING DEFINES THE DIMENSIONAL INTERFACE REQUIREMENTS NECESSARY FOR DEVELOPING AN INSERT MOLDED CONNECTION TO MATE WITH PLUG CONNECTORS PROVIDED BY TE CONNECTIVITY. MATES WITH TE PART NUMBER: 1411001.

NO KEYING OPTION SHOWN

THIS DRAWING IS A CONTROLLED DOCUMENT.		OWN: A. WEBSTER 06DEC2012	TE Connectivity
DIMENSIONS: mm		CHK: C. MARTIN 06DEC2012	
TOLERANCES UNLESS OTHERWISE SPECIFIED:		APVD: C. MARTIN 06DEC2012	NAME: INTERFACE DRAWING
0 PLC	±	PRODUCT SPEC	2 X 4 SEALED
1 PLC	±0.3	APPLICATION SPEC	VIBRATION ROBUSTNESS
2 PLC	±0.10	WEIGHT	SIZE: A1
3 PLC	±	Customer Drawing	CAGE CODE: 00779
4 PLC	±	SCALE: 4:1	DRAWING NO: 2203519
ANGLES	±	SHEET: 1 of 2	REV: A

LOC	DIST	REVISIONS			
		REV	DATE	BY	APPV
FX	00	-	-	-	-
		SEE SHEET 1			



NOTE(S). UNLESS OTHERWISE SPECIFIED

- SEE APPLICABLE HEADER INTERFACE FOR ALL OTHER DIMENSIONS AND DETAILS.

THIS BACK ANGLE IS REQUIRED TO MEET THE CONNECTOR RETENTION FORCE SPECIFICATION WITH ALL ASSEMBLIES ON THE DRAWING NO. 1-1419168-1.

IMPROVED DESIGN FEATURES FOR VIBRATION ROBUSTNESS ENHANCEMENT

THIS DRAWING IS A CONTROLLED DOCUMENT.		OWN: A. WEBSTER 06DEC2012	TE Connectivity
DIMENSIONS: mm		CHK: C. MARTIN 06DEC2012	
TOLERANCES UNLESS OTHERWISE SPECIFIED:		APVD: C. MARTIN 06DEC2012	NAME: INTERFACE DRAWING
0 PLC ±	1 PLC ±0.3	PRODUCT SPEC	2 X 4 SEALED
2 PLC ±0.10	3 PLC ±	APPLICATION SPEC	VIBRATION ROBUSTNESS
4 PLC ±	ANGLES ±	WEIGHT	SIZE: A1
FINISH		Customer Drawing	CAGE CODE: 00779
			DRAWING NO: 2203519
			RESTRICTED TO: -
			SCALE: 4:1
			SHEET: 2 OF 2
			REV: A

Mouser Electronics

Authorized Distributor

Click to View Pricing, Inventory, Delivery & Lifecycle Information:

[TE Connectivity:](#)

[1411001-3](#)